

# HALLIBURTON

iCem<sup>®</sup> Service

## **Terra Energy Partners**

**For: Terra**

Date: Monday, December 04, 2017

**SR 332-12 Surface PJR**

API# 05-045-23429-00

Sincerely,

**Grand Junction Cement Engineering**

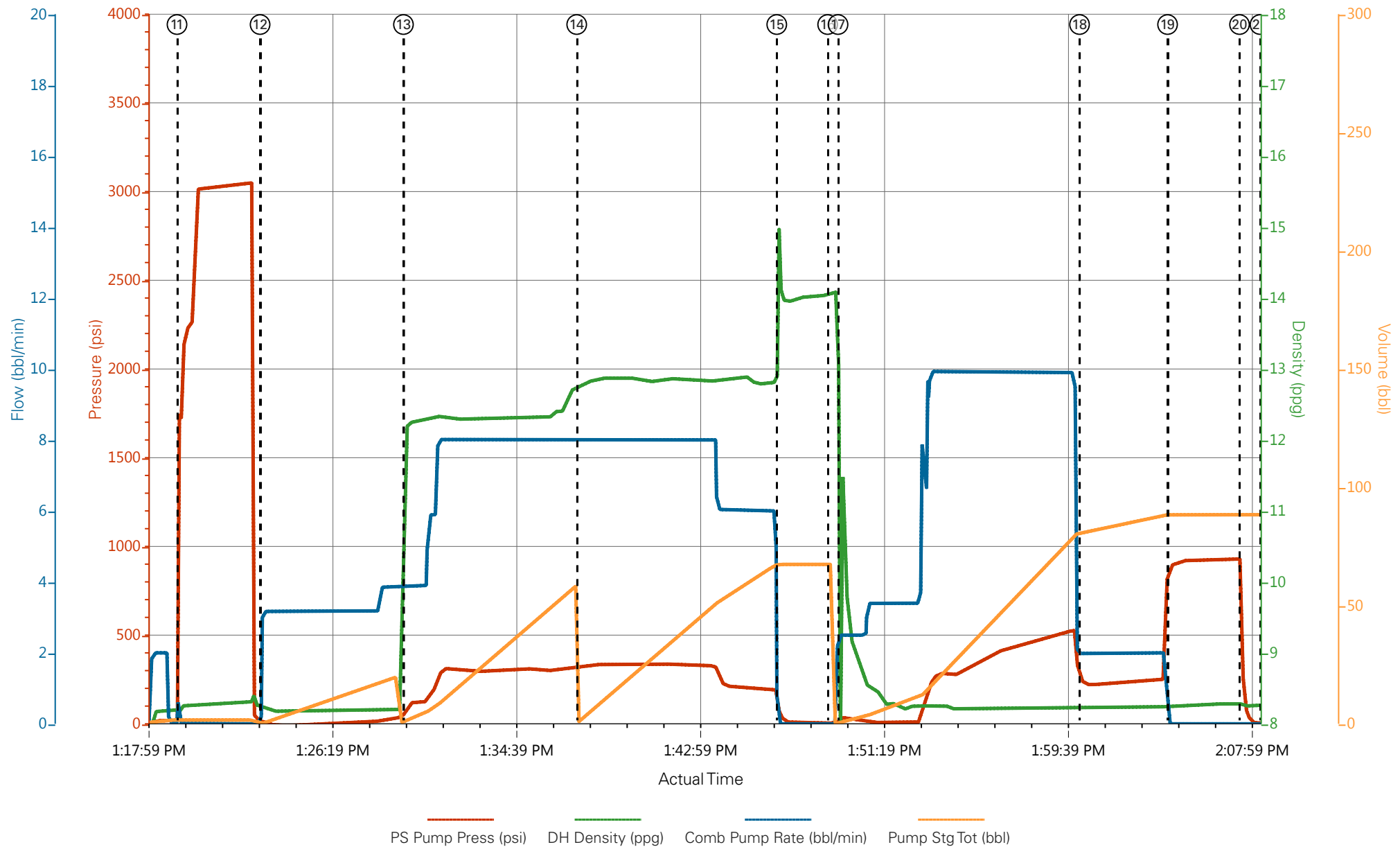
## 1.0 Real-Time Job Summary

## 1.1 Job Event Log

Type	Seq. No.	Graph Label	Date	Time	Source	DH Density (ppg)	Comb Pump Rate (bbl/min)	PS Pump Press (psi)	Pump Stg Tot (bbl)	Comments
Event	1	Call Out	9/4/2017	01:30:00	USER					
Event	2	Pre-Convoy Safety Meeting	9/4/2017	04:25:00	USER					
Event	3	Crew Leave Yard	9/4/2017	04:30:00	USER					
Event	4	Arrive At Loc	9/4/2017	06:00:00	USER					
Event	5	Assessment Of Location Safety Meeting	9/4/2017	06:05:00	USER					
Event	6	Spot Equipment	9/4/2017	06:10:00	USER					
Event	7	Pre-Rig Up Safety Meeting	9/4/2017	06:15:00	USER					
Event	8	Rig-Up Equipment	9/4/2017	06:20:00	USER					
Event	9	Pre-Job Safety Meeting	9/4/2017	09:03:12	USER					
Event	10	Start Job	9/4/2017	13:15:55	COM5	8.33	0.00	2.00	12.0	TD: 1125 TP: 1119 SJ: 38.17 MW: 9.6 9 5/8" 32.3#/FT CSG IN 13 1/2" OH WATER TEST: PH: 7 POTASSIUM: 450 CHLORIDES: 0 SULFATES: <200 TEMP: 68 DEGREES
Event	11	Test Lines	9/4/2017	13:19:25	COM5	8.23	0.00	1733.00	1.6	3000 PSI TEST
Event	12	Pump Spacer 1	9/4/2017	13:23:11	COM5	8.24	3.10	20.00	0.3	FRESH H2O SPACER
Event	13	Pump Lead Cement	9/4/2017	13:29:41	COM5	12.17	3.80	89.00	1.5	125 SKS @ 12.3 PPG 2.38YLD 13.77 GAL/SK H2O
Event	14	Pump Tail Cement	9/4/2017	13:37:32	COM5	12.77	8.00	323.00	1.4	175 SKS @ 12.8 PPG 2.11 YLD 11.78 GAL/SK H2O

Event	15	Shutdown	9/4/2017	13:46:36	USER	14.44	0.00	55.00	67.4	
Event	16	Drop Top Plug	9/4/2017	13:48:54	COM5	14.07	0.00	4.00	67.4	PLUG AWAY
Event	17	Pump Displacement	9/4/2017	13:49:22	COM5	10.36	2.50	31.00	0.5	FRESH H2O DISPLACEMENT
Event	18	Slow Rate	9/4/2017	14:00:19	COM5	8.23	2.00	239.00	81.0	
Event	19	Bump Plug	9/4/2017	14:04:18	COM5	8.26	0.00	887.00	88.4	PLUG BUMPED AT CALCULATED DISPLACEMENT
Event	20	Check Floats	9/4/2017	14:07:34	COM5	8.29	0.00	346.00	88.4	FLOATS HELD. GAINED APPROX 1/2 BBL BACK TO PUMP
Event	21	End Job	9/4/2017	14:08:30	COM5	8.26	0.00	-2.00	88.4	
Event	22	Post-Job Safety Meeting (Pre Rig-Down)	9/4/2017	14:43:34	USER					GOOD CIRCULATION THROUGHOUT JOB. PIPE WAS LEFT STATIC THROUGHOUT JOB. CIRCULATED 25 BBL CEMENT TO SURFACE. USED 40 # SUGAR, NO ADD HOURS CHARGED.
Event	23	Rig-Down Equipment	9/4/2017	14:43:36	USER					
Event	24	Pre-Convoy Safety Meeting	9/4/2017	14:43:43	USER					
Event	25	Crew Leave Location	9/4/2017	14:43:47	USER					THANK YOU FOR CHOOSING HALLIBURTON CEMENTING OF GRAND JUNCTION, COLORADO ANTHONY ANDREWS AND CREW

## TEP SR 332-12 Surface



① Call Out <span>n/a;n/a;n/a;n/a</span>	⑧ Rig-Up Equipment <span>n/a;n/a;n/a;n/a</span>	⑮ Shutdown <span>55;14.44;0;67.4</span>	22 Post-Job Safety Meeting (Pre Rig-Down) <span>n/a;n/a;n/a;n/a</span>
② Pre-Convoy Safety Meeting <span>n/a;n/a;n/a;n/a</span>	⑨ Pre-Job Safety Meeting <span>n/a;n/a;n/a;n/a</span>	⑯ Drop Top Plug <span>4;14.07;0;67.4</span>	23 Rig-Down Equipment <span>n/a;n/a;n/a;n/a</span>
③ Crew Leave Yard <span>n/a;n/a;n/a;n/a</span>	⑩ Start Job <span>2;8.33;0;12</span>	⑰ Pump Displacement <span>31;10.36;2.5;0.5</span>	24 Pre-Convoy Safety Meeting <span>n/a;n/a;n/a;n/a</span>
④ Arrive At Loc <span>n/a;n/a;n/a;n/a</span>	⑪ Test Lines <span>1733;8.23;0;1.6</span>	⑱ Slow Rate <span>239;8.23;2;81</span>	25 Crew Leave Location <span>n/a;n/a;n/a;n/a</span>
⑤ Assessment Of Location Safety Meeting <span>n/a;n/a;n/a;n/a</span>	⑫ Pump Spacer 1 <span>20;8.24;3.1;0.3</span>	⑲ Bump Plug <span>887;8.26;0;88.4</span>	
⑥ Spot Equipment <span>n/a;n/a;n/a;n/a</span>	⑬ Pump Lead Cement <span>89;12.17;3.8;1.5</span>	20 Check Floats <span>346;8.29;0;88.4</span>	
⑦ Pre-Rig Up Safety Meeting <span>n/a;n/a;n/a;n/a</span>	⑭ Pump Tail Cement <span>323;12.77;8;1.4</span>	21 End Job <span>-2;8.26;0;88.4</span>	

# TEP SR 332-12 Surface

