



December 5, 2017

Mr. Mike Gardner
TEP Environmental Specialist
TEP Rocky Mountain LLC
1058 County Road 215
Parachute, Colorado 81635

RE: Status Report: Baseline Water Quality Sampling – Drill Pad TR 1-24-597

Dear Mr. Gardner,

Western Water & Land, Inc. (WWL) completed a hydrologic Water Source evaluation for the TEP Rocky Mountain LLC (TEP) TR 1-24-597 Drill Pad in accordance with Colorado Oil and Gas Conservation Commission (COGCC) Rule 609. Drill Pad TR 1-24-597 is located in SE¼, NW¼, Section 24, Township 5 S, Range 97 W, 6th P.M. This status report addresses field revisions and the sampling location status as relevant to the original executed Baseline Water Quality Evaluation dated June 7, 2017.

The original evaluation considered all Water Sources as defined in Rule 609 within a 0.5-mile radius of the referenced drill pad. Water Sources located within a 0.5-mile radius of the TR 1-24-597 Drill Pad are shown in Figure 1. Please see the original Baseline Water Quality Evaluation (June 7, 2017) for details on how the evaluation was conducted.

Water Source Identification

Water Sources as defined in Rule 609 include Colorado Division of Water Resources (DWR) registered water wells (water wells with existing valid well permits), permitted or adjudicated springs, and monitoring wells installed for baseline sampling and monitoring under COGCC Rules 318A.e(4), 608, 609, 908.b(9) or specified conditions of approval. Each Water Source identified within the 0.5-mile radius area is considered to be a potentially Available Water Source unless existing information suggests that the Water Source would not be suitable for the baseline water quality program. The original Baseline Water Quality Evaluation identified two potentially Available Water Sources located within 0.5 miles of the TR 1-24-597 Drill Pad (see Figure 1).

The identified potentially Available Water Sources are as follows:

- Getty Spring 6D
- Getty Spring 6E

Preferred Water Sources

In accordance with Rule 609, all potentially Available Water Sources within a 0.5-mile radius of the drill pad are to be identified and up to a maximum of four sources must be included in the baseline and

subsequent monitoring program. Each potentially Available Water Source identified was evaluated based on WWL's hydrologic knowledge of the region, general hydrologic rationale, and in accordance with the guidelines specified in Rule 609 to identify the preferred sources for the baseline program. The preferred potentially Available Water Sources selected are as follows:

- Getty Spring 6D
- Getty Spring 6E

Preferred Water Sources are incorporated into the baseline water quality monitoring program provided 1) the structures exist; 2) the structure owner, or land owner if the structure owner is not known, grants approval to sample the source; and 3) inspection of the structure confirms that a representative sample can be obtained from the structure.

Access Request

All attempts requesting permission to sample potentially Available Water Sources from the well permit holders and the property owners are recorded in the Correspondence Logs below.

Correspondence Log: TR 1-24-597				
Contact Attempt Date	Contact Name	Contact Method	Responsible Person	Results
7/11/2017	Mike Gardner (TEP)	Email	Jessie Pahler	WWL sent Scope-of-Work to TEP for Chevron review. Chevron accepted SOW and approved access on 8/28/2017.

Field Results

Each identified potentially Available Water Source and its monitoring status is as follows:

- Getty Spring 6D: water right owned by Chevron Texaco Shale Oil Company and property owned by Chevron USA, Inc.
 - Access to sample this spring was granted by Chevron North America Exploration and Production Company on August 28, 2017. WWL conducted field reconnaissance on August 29, 2017; no off-channel emanation point was located. A one-time courtesy sample was collected in the channel.
- Getty Spring 6E: water right owned by Chevron Texaco Shale Oil Company and property owned by Chevron USA, Inc.
 - Access to sample this spring was granted by Chevron North America Exploration and Production Company on August 28, 2017. WWL conducted sampling of the spring August 29, 2017.

WWL personnel conducted a broad field reconnaissance on August 29, 2017 in the area where Getty Spring 6D and Getty Spring 6E are located according to DWR databases. The area was characterized by quaking aspen, Gambel oak, and sagebrush plant communities. The springs' decreed locations are

near a stream channel of an unnamed tributary to Wolf Creek. The unnamed tributary was flowing in the vicinity of the decreed location of Getty Spring 6D but no off-channel emanation point was found. A sample was collected from the unnamed tributary near the decreed location, but was not included in the baseline report as it did not meet the Rule 609 definition of a water source. An emanation point was found near the decreed location of Getty 6E and a sample was collected. The decreed locations of the springs are shown in Figure 1. Pictures from field reconnaissance and sampling are included in Attachment A. As a result of these events, Getty Spring 6E is the only Available Water Source included in the baseline water quality sampling program for Drill Pad TR 1-24-597.

If you have any questions or concerns, please contact me at (970) 242-0170.

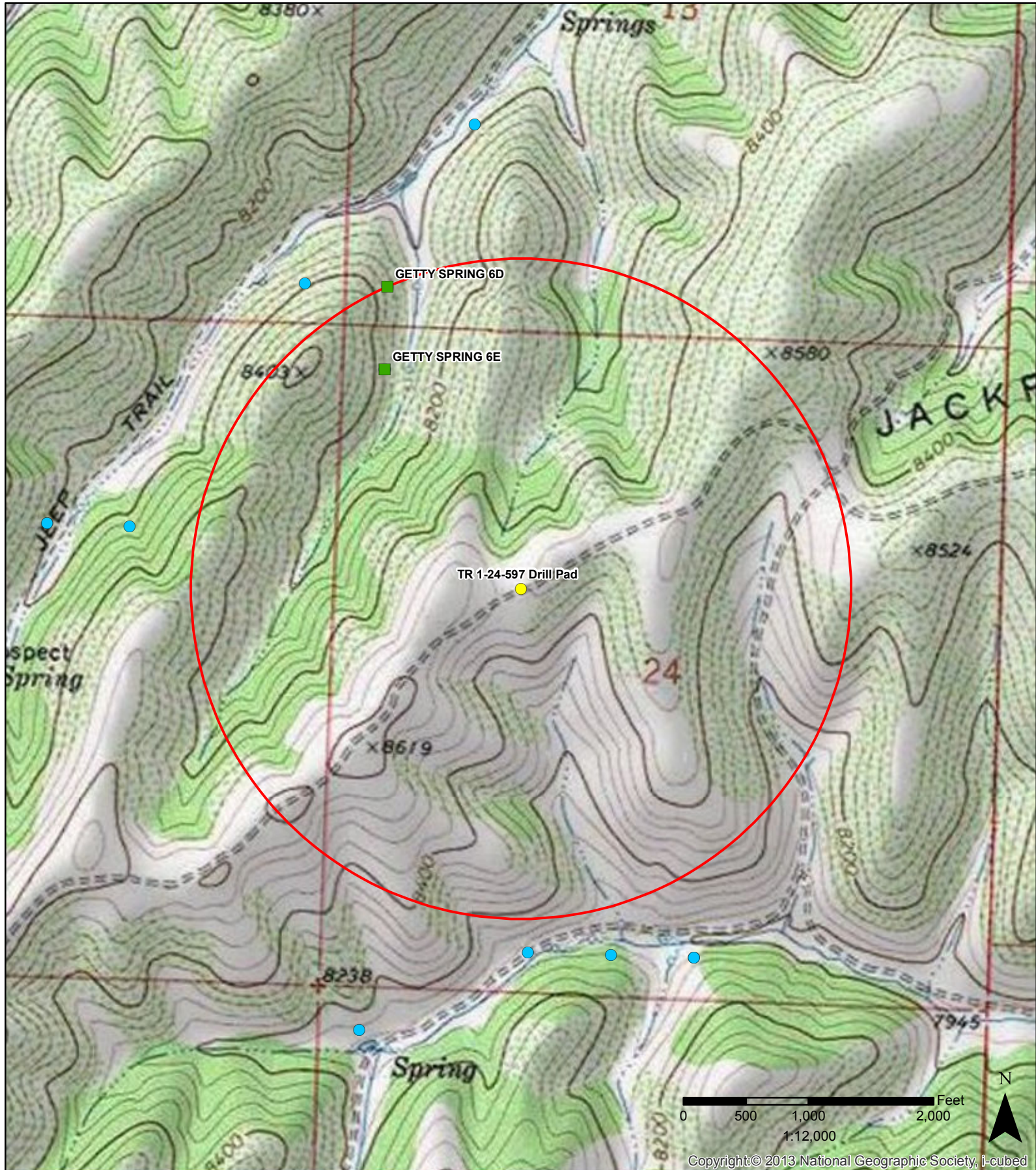
Sincerely,



Bruce D. Smith
Principal Hydrogeologist
WESTERN WATER & LAND, INC.

Attachments:


Figure 1 – Water Source Evaluation Map
Attachment A – Photographs



Copyright © 2013 National Geographic Society, I-cubed

Legend	
● TR 1-24-597 Drill Pad	■ Water right decree
 0.5-mile radius evaluation area	● Outside permits or decrees
● Constructed well	● Well completion status unknown

Figure 1: TR 1-24-597 Drill Pad 0.5-Mile Radius Water Source Evaluation SE 1/4, NW 1/4, S24, T5S, R97W, 6 PM

Garfield County, Colorado TEP Rocky Mountain, LLC	 Western Water & Land, Inc. Applications in Earth Science
--	--

ATTACHMENT A

Photographs



Photo 1. Getty Spring 6D Sampling Location (Getty 6D)



Photo 2. Getty Spring 6D Sampling Location; view downstream (Getty 6D)



Photo 3. Getty Spring 6E Sampling Location; view upstream (Getty 6E)



Photo 4. Getty Spring 6E Sampling Location; view downstream (Getty 6E)