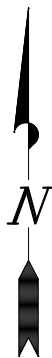
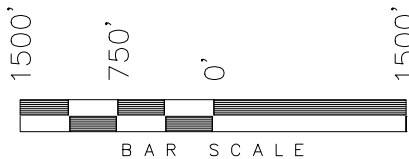
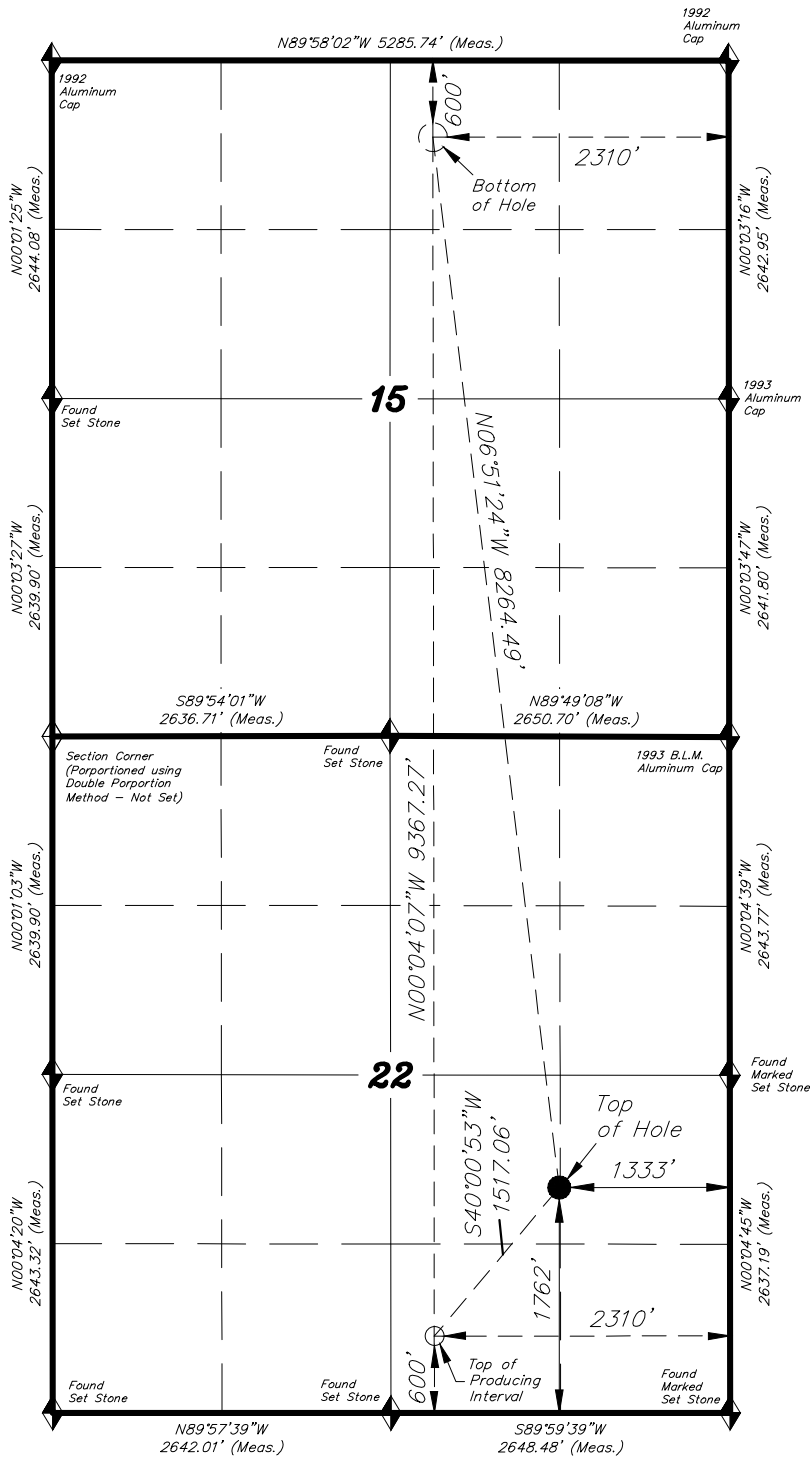


WELL LOCATION, BHR FED J22-15-397-4RH,
LOCATED AS SHOWN IN THE NW 1/4 SE 1/4
OF SECTION 22, T3N, R97W, 6TH P.M. RIO
BLANCO COUNTY, COLORADO.

T3N, R97W, 6th P.M.

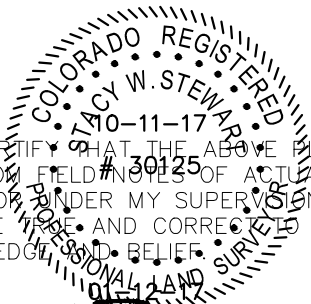
TARGET BOTTOM HOLE, BHR FED
J22-15-397-4RH, LOCATED AS SHOWN IN
THE NW 1/4 NE 1/4 OF SECTION 15, T3N,
R97W, 6TH P.M. RIO BLANCO COUNTY,
COLORADO.



- NOTES:**
- Well footages are measured at right angles to the Section Lines.
 - Bearings are based on Global Positioning Satellite Observations.
 - G.P.S. Operator: K. Stewart, (PDOP) = 1.4

WELL LOCATION:
BHR FED J22-15-397-4RH
ELEV. EXIST.
GRADED GROUND = 5938'

THIS IS TO CERTIFY THAT THE ABOVE WAS
PREPARED FROM FIELD NOTES OF ACTUAL SURVEYS
MADE BY ME OR UNDER MY SUPERVISION AND THAT
THE SAME ARE TRUE AND CORRECT TO THE BEST
OF MY KNOWLEDGE AND BELIEF.



REGISTERED LAND SURVEYOR
REGISTRATION No. 30125
STATE OF COLORADO

TRI STATE LAND SURVEYING & CONSULTING
180 NORTH VERNAL AVE. - VERNAL, UTAH 84078
(435) 781-2501

DATE SURVEYED:
10-10-17

DATE DRAWN:
10-11-17

REVISED:

SURVEYED BY: C.D.S.

DRAWN BY: F.T.M.

SCALE: 1" = 1500'

SHEET
1a

NAD 83 (SURFACE LOCATION)	
LATITUDE	= 40°12'43.32" (40.212032)
LONGITUDE	= 108°15'35.13" (108.259757)
NAD 27 (SURFACE LOCATION)	
LATITUDE	= 40°12'43.42" (40.212062)
LONGITUDE	= 108°15'32.81" (108.263251)
NAD 83 (TOP OF PRODUCTION)	
LATITUDE	= 40°12'31.84" (40.208845)
LONGITUDE	= 108°15'47.70" (108.262606)
NAD 27 (TOP OF PRODUCTION)	
LATITUDE	= 40°12'31.95" (40.208875)
LONGITUDE	= 108°15'45.38" (108.262606)
NAD 83 (BOTTOM HOLE LOCATION)	
LATITUDE	= 40°14'04.38" (40.234551)
LONGITUDE	= 108°15'47.79" (108.263274)
NAD 27 (BOTTOM HOLE LOCATION)	
LATITUDE	= 40°14'04.49" (40.234581)
LONGITUDE	= 108°15'45.47" (108.262629)

BASIS OF ELEV;
Elevations are
NAVD 88 Based on
a OPUS Correction.