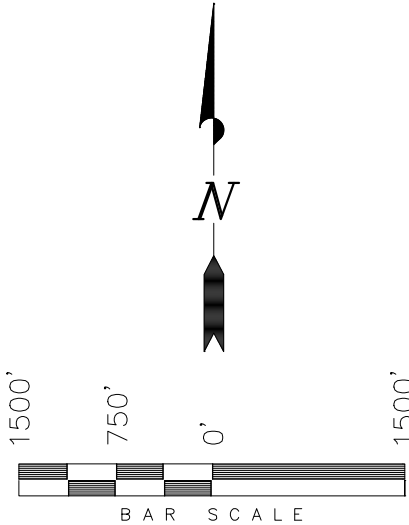
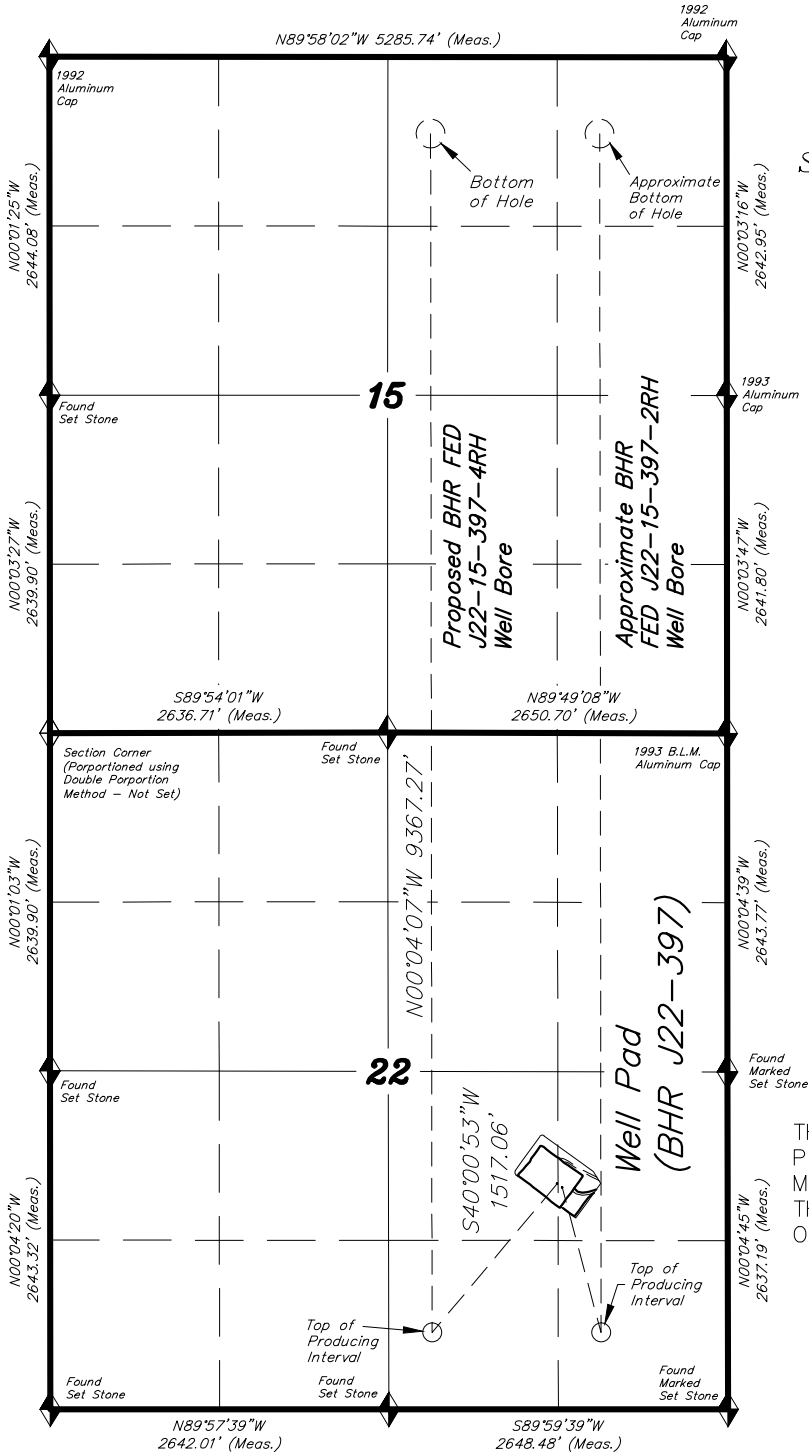


T3N, R97W, 6th P.M.

AUGUSTUS ENERGY PARTNERS II, LLC

GENERAL MULTI WELL PLAN  
SECTION DRILLING MAP  
BHR J22-397 PAD  
EXPANSION

PAD LOCATION: SE 1/4 OF  
SECTION 22, T3N, R97W, 6TH P.M.  
RIO BLANCO COUNTY, COLORADO.



THIS IS TO CERTIFY THAT THE ABOVE PLAT WAS  
PREPARED FROM FIELD NOTES OF ACTUAL SURVEYS  
MADE BY ME OR UNDER MY SUPERVISION AND THAT  
THE SAME ARE TRUE AND CORRECT TO THE BEST  
OF MY KNOWLEDGE AND BELIEF.

REGISTERED LAND SURVEYOR  
REGISTRATION No. 30125  
STATE OF COLORADO

LATITUDE & LONGITUDE  
Surface position of Wells (NAD 83)

WELL	LATITUDE	LONGITUDE
BHR FED J22-15-397-2RH	40°12'43.03" (40.211953)	108°15'34.60" (108.259611)
BHR FED J22-15-397-4RH	40°12'43.32" (40.212032)	108°15'35.13" (108.259757)

TOP HOLE FOOTAGES

J22-15-397-4RH  
1762' FSL & 1333' FEL, Sec. 22

LATITUDE & LONGITUDE  
Top of Producing Interval (NAD 83)

WELL	LATITUDE	LONGITUDE
BHR FED J22-15-397-4RH	40°12'31.84" (40.208845)	108°15'47.70" (108.263251)

TOP OF PRODUCING  
INTERVAL FOOTAGES

J22-15-397-4RH  
600' FSL & 2310' FEL, Sec. 22

LATITUDE & LONGITUDE  
Bottom Hole Position (NAD 83)

WELL	LATITUDE	LONGITUDE
BHR FED J22-15-397-4RH	40°14'04.38" (40.234551)	108°15'47.79" (108.263274)

BOTTOM HOLE FOOTAGES

J22-15-397-4RH  
600' FNL & 2310' FEL, Sec. 15

◆ = SECTION CORNERS LOCATED

NOTES:

- Well footages are measured at right angles to the Section Lines.
- Bearings are based on Global Positioning Satellite Observations.

TRI STATE LAND SURVEYING & CONSULTING

180 NORTH VERNAL AVE. – VERNAL, UTAH 84078  
(435) 781-2501

DATE SURVEYED: 10-10-17	SURVEYED BY: C.D.S.	SHEET  1
DATE DRAWN: 10-24-17	DRAWN BY: F.T.M.	
REVISED:	SCALE: 1" = 1500'	