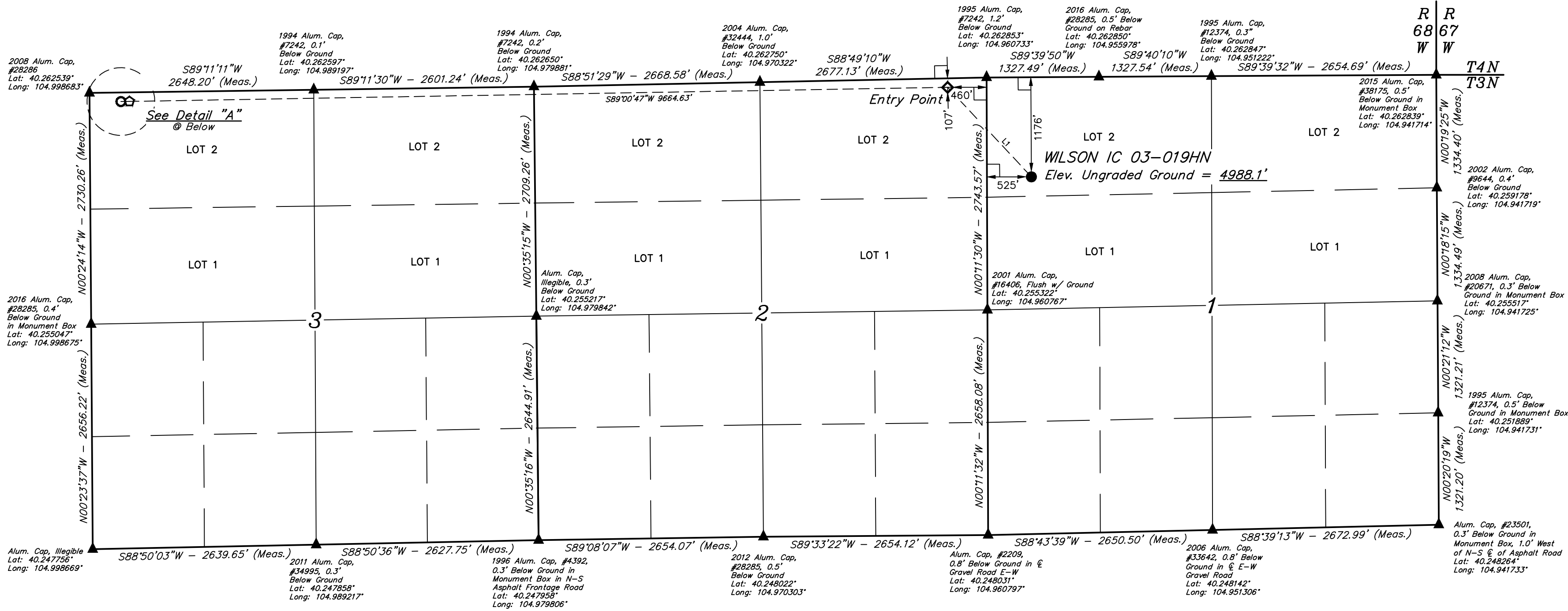
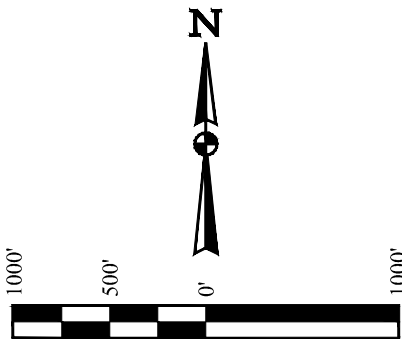
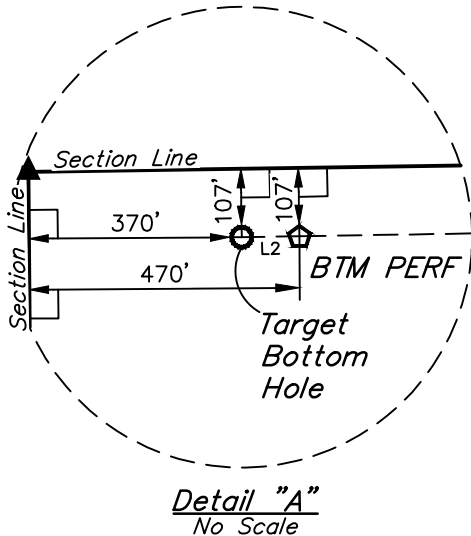


WILSON IC 03-019HN
NW 1/4 NW 1/4, SECTION 1, T3N, R68W, 6th P.M.
WELD COUNTY, COLORADO

BASIS OF BEARINGS
BASIS OF BEARINGS IS A G.P.S. OBSERVATION
BASIS OF ELEVATION
USGS COOPERATIVE BASE NETWORK CONTROL STATION,
DESIGNATION 'VERMILYEA'. NGS DATA SHEET LISTS THE NAVD
88 ELEVATION AS BEING 5026 FEET.



LINE TABLE		
LINE	DIRECTION	LENGTH
L1	N43°05'44"W	1446.90'
L2	S89°11'11"W	100.00'



- LEGEND:
- 90° SYMBOL
 - PROPOSED WELLHEAD.
 - ENTRY POINT.
 - BTM PERF.
 - TARGET BOTTOM HOLE.
 - SECTION CORNERS LOCATED. (NAD 83)

NAD 83 (SURFACE LOCATION)	NAD 83 (ENTRY POINT)	NAD 83 (BTM PERF)	NAD 83 (TARGET BOTTOM HOLE)
LATITUDE = 40°15'34.65" (40.259625)	LATITUDE = 40°15'45.15" (40.262542)	LATITUDE = 40°15'44.12" (40.262256)	LATITUDE = 40°15'44.11" (40.262253)
LONGITUDE = 104°57'31.92" (104.958867)	LONGITUDE = 104°57'44.58" (104.962383)	LONGITUDE = 104°59'49.20" (104.997000)	LONGITUDE = 104°59'50.49" (104.997358)
NAD 27 (SURFACE LOCATION)	NAD 27 (ENTRY POINT)	NAD 27 (BTM PERF)	NAD 27 (TARGET BOTTOM HOLE)
LATITUDE = 40°15'34.70" (40.259639)	LATITUDE = 40°15'45.21" (40.262558)	LATITUDE = 40°15'44.18" (40.262272)	LATITUDE = 40°15'44.17" (40.262269)
LONGITUDE = 104°57'30.00" (104.958333)	LONGITUDE = 104°57'42.66" (104.961850)	LONGITUDE = 104°59'47.28" (104.996467)	LONGITUDE = 104°59'48.56" (104.996822)

CERTIFICATE OF REGISTRATION
THIS IS TO CERTIFY THAT THE ABOVE NOTED SURVEY WAS MADE BY ME OR UNDER MY SUPERVISION AND THAT THE SAME ARE TRUE AND CORRECT TO THE BEST OF MY KNOWLEDGE AND BELIEF.
REGISTERED LAND SURVEYOR
RECEIVED JANUARY 28, 2015
STATE OF COLORADO
JANUARY 28, 2015

REV: 3 10-05-17 K.B. (BTM PERF ADD & TBH CHANGE)

UINTEAH
ENGINEERING & LAND SURVEYING

UELS, LLC
Corporate Office * 85 South 200 East
Vernal, UT 84078 * (435) 789-1017

SURVEYED BY ZANE BULLARD, G.W.
DRAWN BY M.F.D.

04-11-16
07-21-16

SCALE
1" = 1000'

WELL LOCATION PLAT