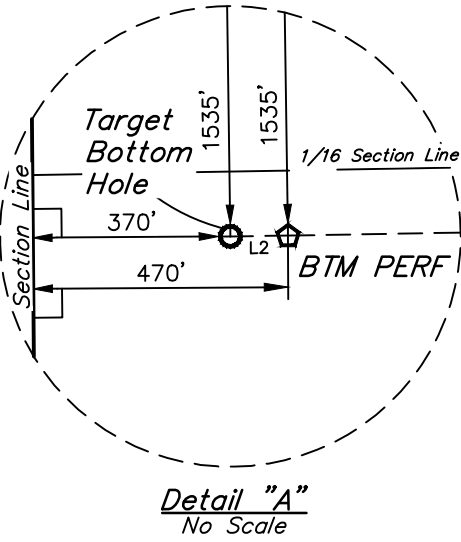
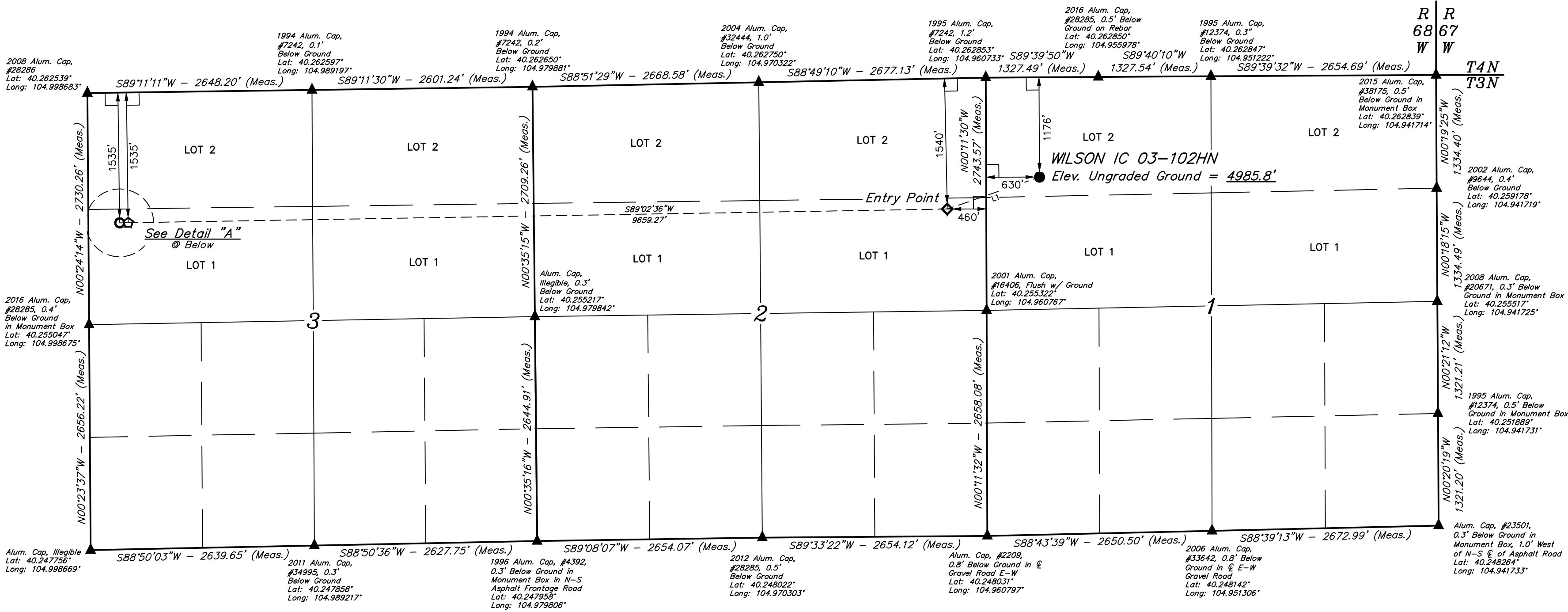
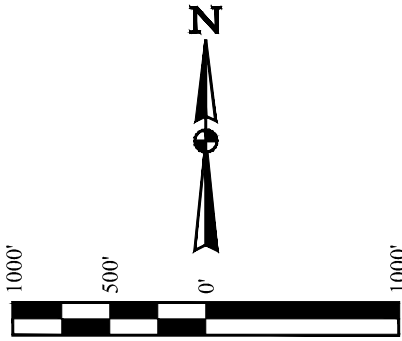


WILSON IC 03-102HN
NW 1/4 NW 1/4, SECTION 1, T3N, R68W, 6th P.M.
WELD COUNTY, COLORADO

BASIS OF BEARINGS
BASIS OF ELEVATION
USGS COOPERATIVE BASE NETWORK CONTROL STATION,
DESIGNATION 'VERMILYEA'. NGS DATA SHEET LISTS THE NAVD
88 ELEVATION AS BEING 5026 FEET.



LINE TABLE		
LINE	DIRECTION	LENGTH
L1	S70°53'56"W	1152.18'
L2	S89°11'11"W	100.00'

LEGEND:
= 90° SYMBOL
= PROPOSED WELLHEAD.
= ENTRY POINT.
= BTM PERF.
= TARGET BOTTOM HOLE.
= SECTION CORNERS LOCATED. (NAD 83)

NAD 83 (SURFACE LOCATION)	NAD 83 (ENTRY POINT)	NAD 83 (BTM PERF)	NAD 83 (TARGET BOTTOM HOLE)
LATITUDE = 40°15'34.64" (40.259622)	LATITUDE = 40°15'30.99" (40.258608)	LATITUDE = 40°15'30.01" (40.258336)	LATITUDE = 40°15'30.00" (40.258333)
LONGITUDE = 104°57'30.56" (104.958489)	LONGITUDE = 104°57'44.64" (104.962400)	LONGITUDE = 104°59'49.18" (104.996994)	LONGITUDE = 104°59'50.47" (104.997353)
NAD 27 (SURFACE LOCATION)	NAD 27 (ENTRY POINT)	NAD 27 (BTM PERF)	NAD 27 (TARGET BOTTOM HOLE)
LATITUDE = 40°15'34.70" (40.259639)	LATITUDE = 40°15'31.05" (40.258625)	LATITUDE = 40°15'30.07" (40.258353)	LATITUDE = 40°15'30.06" (40.258350)
LONGITUDE = 104°57'28.65" (104.957958)	LONGITUDE = 104°57'42.72" (104.961867)	LONGITUDE = 104°59'47.26" (104.996461)	LONGITUDE = 104°59'48.55" (104.996819)

CERTIFICATE OF REGISTRATION
THIS IS TO CERTIFY THAT THE ABOVE NOTED SURVEY WAS MADE BY ME OR UNDER MY SUPERVISION AND THAT THE SAME ARE TRUE AND CORRECT TO THE BEST OF MY KNOWLEDGE AND BELIEF.
REGISTERED LAND SURVEYOR
RECEIVED NO. 2825
STATE OF COLORADO
JAN 18 2017

REV: 3 10-05-17 K.B. (BTM PERF ADD & TBH CHANGE)

UELTS, LLC
Corporate Office * 85 South 200 East
Vernal, UT 84078 * (435) 789-1017

WELL LOCATION PLAT