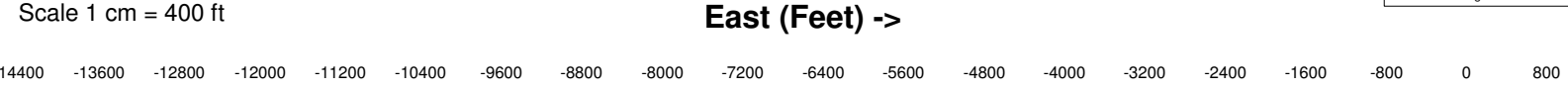
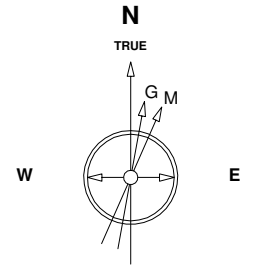


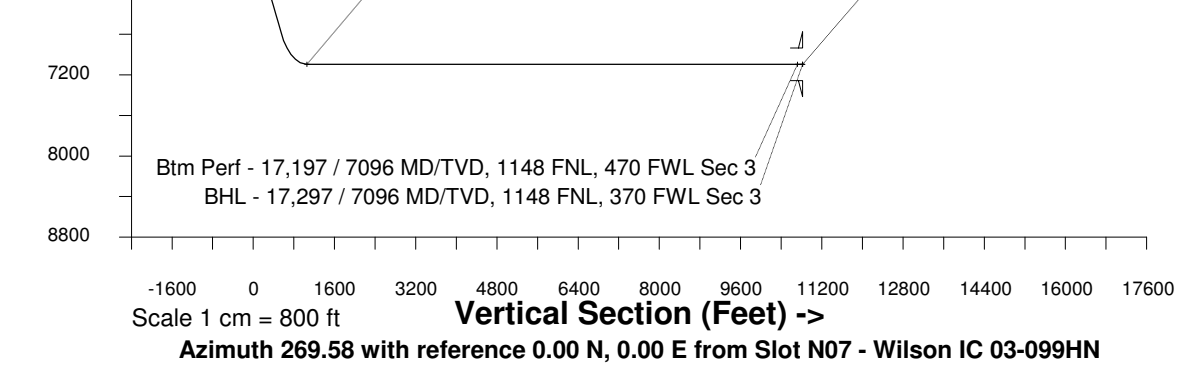
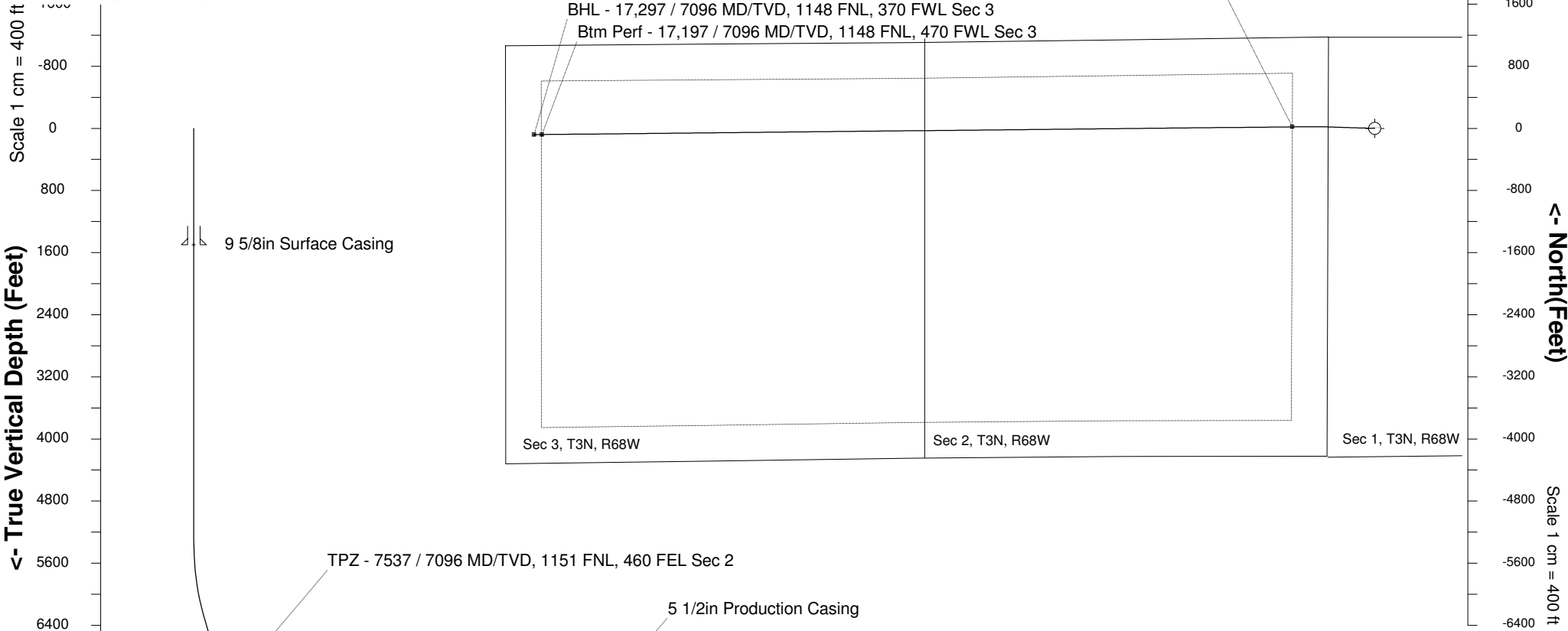
# Great Western Operating Company, LLC

<b>Location</b>	Colorado	<b>Slot</b>	Slot N07 - Wilson IC 03-099HN
<b>Field</b>	Wattenburg	<b>Well</b>	Wilson IC 03-099HN
<b>Installation</b>	Wilson	<b>Wellbore</b>	Wilson IC 03-099HN (PWB)

Created by admin  
Date plotted 4-Oct-2017  
Plot reference is Wilson IC 03-099HN (PWB).  
Ref wellpath is Wilson IC 03-099HN (PWP#1).  
Coordinates are in Feet reference Slot N07 - Wilson IC 03-099HN.  
True Vertical Depths are reference Rig Datum.  
Measured Depths are reference Rig Datum.  
Rig Datum: Planned Datum #1  
Rig Datum to Mean Sea Level: 5005.80 ft.  
Plot North is aligned to TRUE North.



22-Sep-2016  
IGRF Model [1900.0-2020.0] Dip: 66.73 deg Field: 52381.9 nT  
Lat: N40 15 34.6500 Long: W104 57 32.1084 Elev: 4985.80 ft  
Magnetic North is 8.38 deg East of TRUE North  
To correct azimuth from Magnetic to TRUE add 8.38 deg



WELL PROFILE DATA								
Point	MD	Inc	Azi	TVD	North	East	deg/100ft	V. Sect
Tie on	0.00	0.00	0.00	0.00	S 0.00	W 0.00		-0.00
KOP	5321.40	0.00	271.79	5321.40	S 0.00	W 0.00	0.00	-0.00
End of Build	6321.44	30.00	271.79	6276.37	N 7.97	W 255.77	9.84	255.70
End of Hold	6936.91	30.00	271.79	6809.37	N 17.56	W 563.37	0.00	563.22
Target TPZ - ... Sec 2	7537.18	90.00	269.41	7096.00	N 19.33	W 1059.74	32.81	1059.57
Target Btm Pe... Sec 3	17197.08	90.00	269.41	7096.00	S 79.65	W 10719.14	0.00	10719.43
End of Turn	17201.69	90.00	270.01	7096.00	S 79.67	W 10723.75	42.65	10724.04
T.D. & Target BHL...c 3	17297.09	90.00	270.01	7096.00	S 79.65	W 10819.14	0.00	10819.43