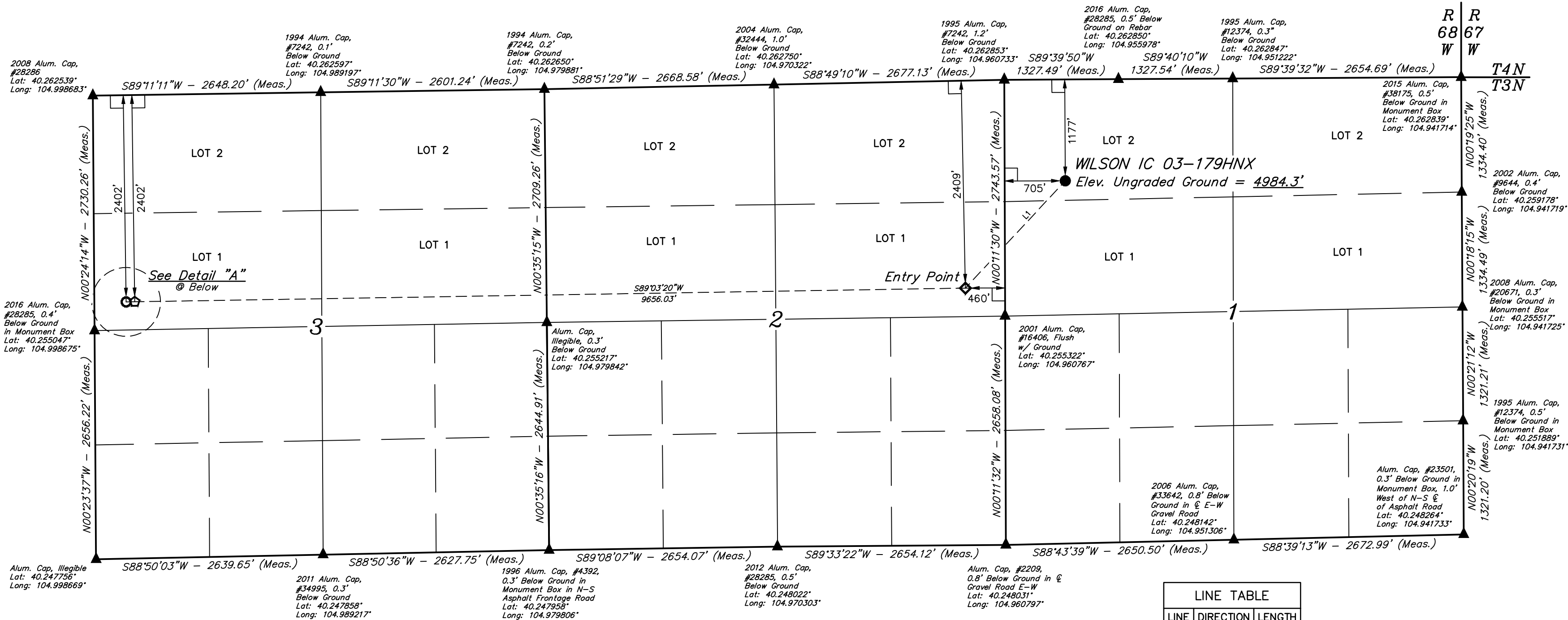
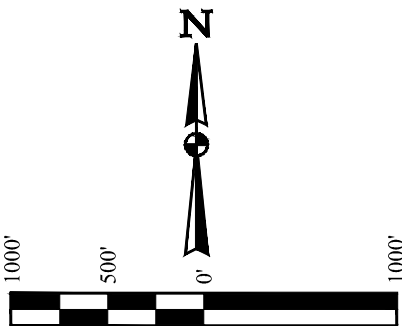
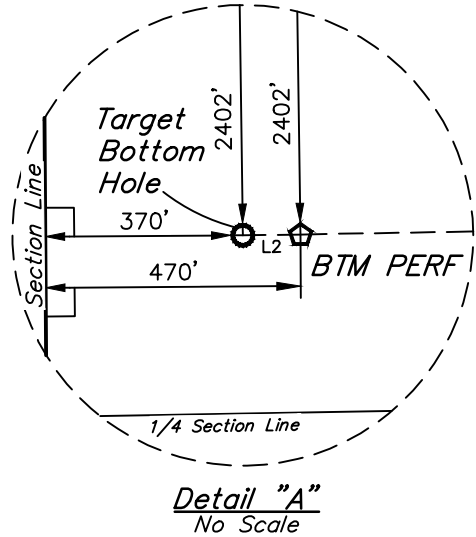


WILSON IC 03-179HNX  
NW 1/4 NW 1/4, SECTION 1, T3N, R68W, 6th P.M.  
WELD COUNTY, COLORADO

BASIS OF BEARINGS  
BASIS OF BEARINGS IS A G.P.S. OBSERVATION  
BASIS OF ELEVATION  
USGS COOPERATIVE BASE NETWORK CONTROL STATION,  
DESIGNATION 'VERMILYEA'. NGS DATA SHEET LISTS THE NAVD  
88 ELEVATION AS BEING 5026 FEET.



LINE TABLE		
LINE	DIRECTION	LENGTH
L1	S42°57'49\"W	1703.27'
L2	S89°11'11\"W	100.00'



- LEGEND:
- 90° SYMBOL
  - PROPOSED WELLHEAD.
  - ENTRY POINT.
  - BTM PERF.
  - TARGET BOTTOM HOLE.
  - SECTION CORNERS LOCATED. (NAD 83)

CERTIFICATE OF REGISTRATION  
THIS IS TO CERTIFY THAT THE ABOVE IS A TRUE AND CORRECT COPY OF THE NOTES OF ACTUAL SURVEYS MADE BY ME UNDER MY SUPERVISION AND THAT THE SAME ARE TRUE AND CORRECT TO THE BEST OF MY KNOWLEDGE AND BELIEF.

REGISTERED LAND SURVEYOR  
RECEIVED NO. 28285  
STATE OF COLORADO

REV: 3 10-05-17 K.B. (BTM PERF ADD & TBH CHANGE)

PDOP = 1.4

UINTEAH  
ENGINEERING & LAND SURVEYING

UELS, LLC  
Corporate Office \* 85 South 200 East  
Vernal, UT 84078 \* (435) 789-1017

SURVEYED BY ZANE BULLARD, G.W.  
DRAWN BY M.F.D.

04-11-16  
07-21-16

SCALE  
1" = 1000'

WELL LOCATION PLAT

NAD 83 (SURFACE LOCATION)	NAD 83 (ENTRY POINT)	NAD 83 (BTM PERF)	NAD 83 (TARGET BOTTOM HOLE)
LATITUDE = 40°15'34.64" (40.259622)	LATITUDE = 40°15'22.40" (40.256222)	LATITUDE = 40°15'21.44" (40.255956)	LATITUDE = 40°15'21.44" (40.255956)
LONGITUDE = 104°57'29.60" (104.958222)	LONGITUDE = 104°57'44.67" (104.962408)	LONGITUDE = 104°59'49.17" (104.996992)	LONGITUDE = 104°59'50.46" (104.997350)
NAD 27 (SURFACE LOCATION)	NAD 27 (ENTRY POINT)	NAD 27 (BTM PERF)	NAD 27 (TARGET BOTTOM HOLE)
LATITUDE = 40°15'34.70" (40.259639)	LATITUDE = 40°15'22.46" (40.256239)	LATITUDE = 40°15'21.50" (40.255972)	LATITUDE = 40°15'21.49" (40.255969)
LONGITUDE = 104°57'27.68" (104.957689)	LONGITUDE = 104°57'42.76" (104.961878)	LONGITUDE = 104°59'47.25" (104.996458)	LONGITUDE = 104°59'48.54" (104.996817)