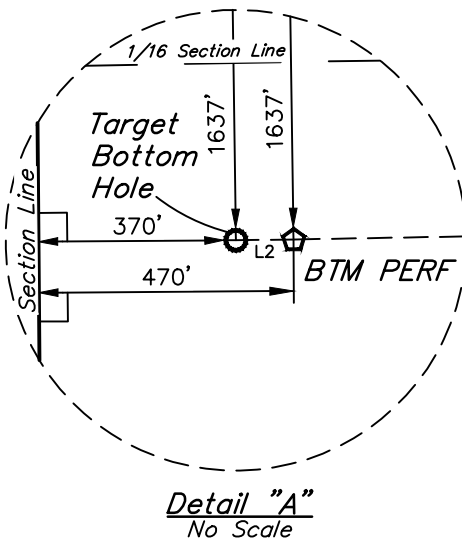
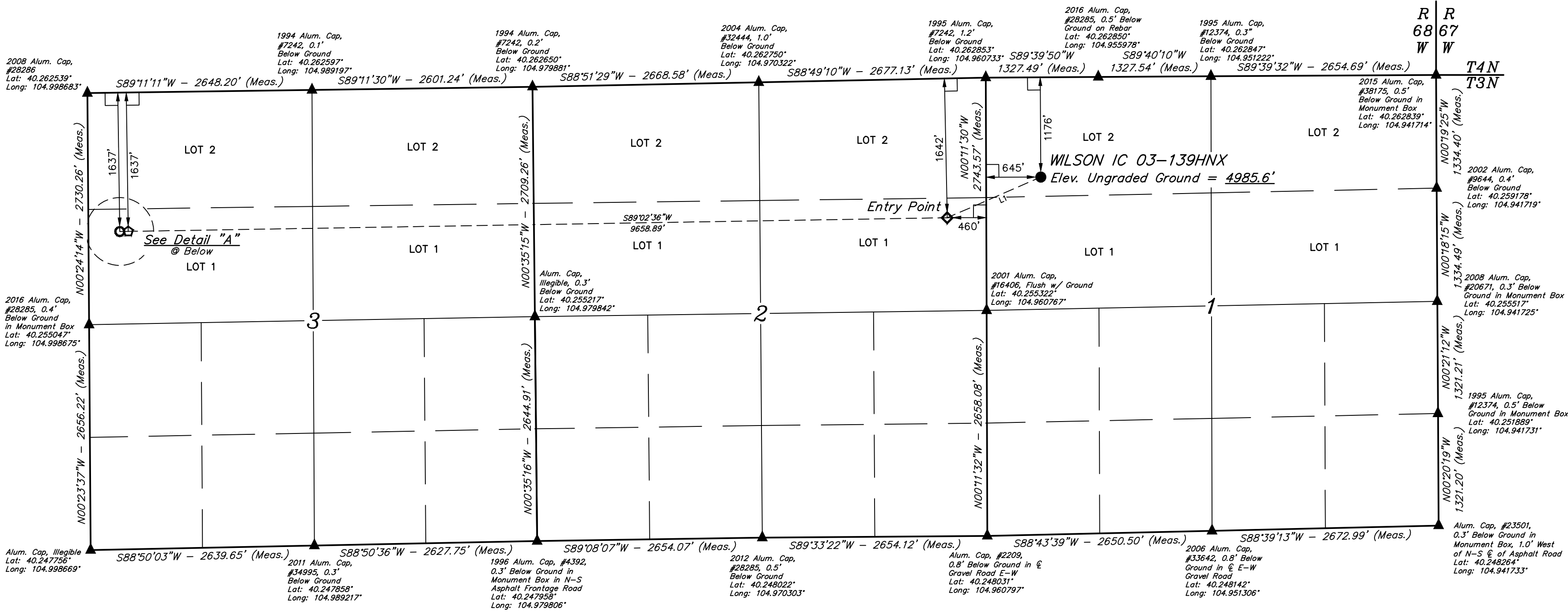
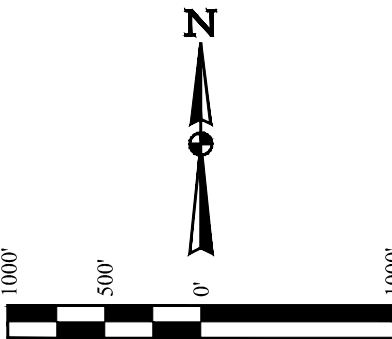


WILSON IC 03-139HNX
NW 1/4 NW 1/4, SECTION 1, T3N, R68W, 6th P.M.
WELD COUNTY, COLORADO

BASIS OF BEARINGS
BASIS OF ELEVATION
USGS COOPERATIVE BASE NETWORK CONTROL STATION,
DESIGNATION 'VERMILYEA'. NGS DATA SHEET LISTS THE NAVD
88 ELEVATION AS BEING 5026 FEET.



LINE TABLE		
LINE	DIRECTION	LENGTH
L1	S66°31'45"W	1202.93'
L2	S89°11'11"W	100.00'

CERTIFICATE OF REGISTRATION
THIS IS TO CERTIFY THAT THE ABOVE DESCRIBED SURVEY WAS MADE BY THE UNDERSIGNED LAND SURVEYOR IN ACCORDANCE WITH THE PROVISIONS OF THE COLORADO LAND SURVEYING ACT, AND THAT THE SAME ARE TRUE AND CORRECT TO THE BEST OF MY KNOWLEDGE AND BELIEF.

REV: 3 10-05-17 K.B. (BTM PERF ADD & TBH CHANGE)

- LEGEND:
- 90° SYMBOL
 - PROPOSED WELLHEAD.
 - ENTRY POINT.
 - BTM PERF.
 - TARGET BOTTOM HOLE.
 - SECTION CORNERS LOCATED. (NAD 83)

NAD 83 (SURFACE LOCATION)	NAD 83 (ENTRY POINT)	NAD 83 (BTM PERF)	NAD 83 (TARGET BOTTOM HOLE)
LATITUDE = 40°15'34.64" (40.259622)	LATITUDE = 40°15'29.98" (40.258328)	LATITUDE = 40°15'29.00" (40.258056)	LATITUDE = 40°15'28.99" (40.258053)
LONGITUDE = 104°57'30.37" (104.958436)	LONGITUDE = 104°57'44.64" (104.962400)	LONGITUDE = 104°59'49.18" (104.996994)	LONGITUDE = 104°59'50.47" (104.997353)
NAD 27 (SURFACE LOCATION)	NAD 27 (ENTRY POINT)	NAD 27 (BTM PERF)	NAD 27 (TARGET BOTTOM HOLE)
LATITUDE = 40°15'34.70" (40.259639)	LATITUDE = 40°15'30.04" (40.258344)	LATITUDE = 40°15'29.06" (40.258072)	LATITUDE = 40°15'29.05" (40.258069)
LONGITUDE = 104°57'28.45" (104.957903)	LONGITUDE = 104°57'42.72" (104.961867)	LONGITUDE = 104°59'47.26" (104.996461)	LONGITUDE = 104°59'48.55" (104.996819)

UELTS, LLC
Corporate Office * 85 South 200 East
Vernal, UT 84078 * (435) 789-1017

SURVEYED BY ZANE BULLARD, G.W.
DRAWN BY M.F.D.

04-11-16
07-21-16

SCALE
1" = 1000'

WELL LOCATION PLAT