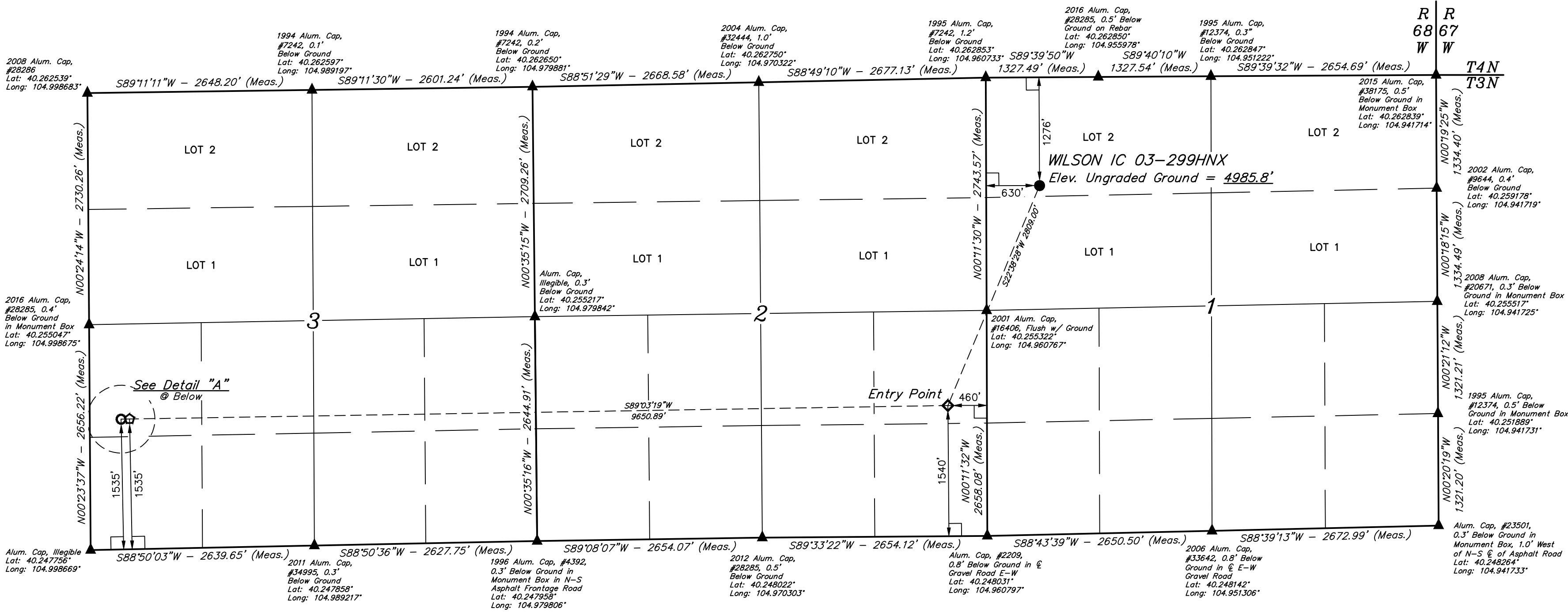
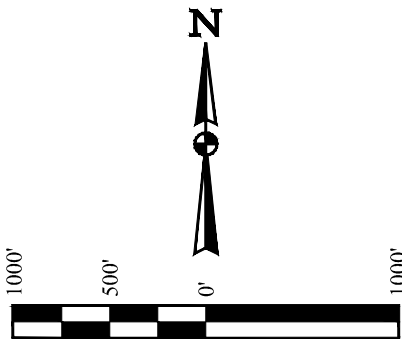
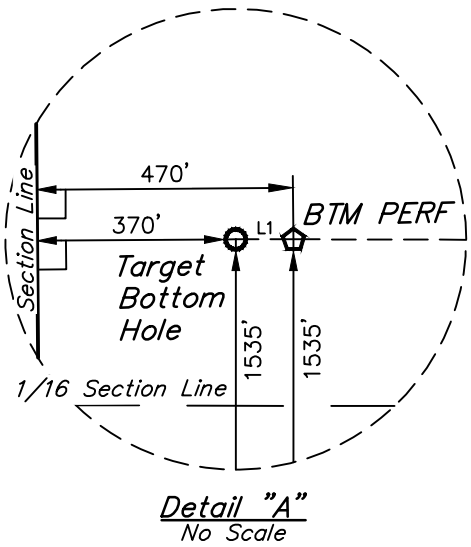


WILSON IC 03-299HNX
NW 1/4 NW 1/4, SECTION 1, T3N, R68W, 6th P.M.
WELD COUNTY, COLORADO

BASIS OF BEARINGS
BASIS OF BEARINGS IS A G.P.S. OBSERVATION
BASIS OF ELEVATION
USGS COOPERATIVE BASE NETWORK CONTROL STATION,
DESIGNATION 'VERMILYEA'. NGS DATA SHEET LISTS THE NAVD
88 ELEVATION AS BEING 5026 FEET.



LINE TABLE		
LINE	DIRECTION	LENGTH
L1	S88°50'03"W	100.01'



- LEGEND:
- 90° SYMBOL
 - PROPOSED WELLHEAD.
 - ENTRY POINT.
 - BTM PERF.
 - TARGET BOTTOM HOLE.
 - SECTION CORNERS LOCATED. (NAD 83)

PDOP = 1.9

NAD 83 (SURFACE LOCATION) LATITUDE = 40°15'33.65" (40.259347) LONGITUDE = 104°57'30.57" (104.958492)	NAD 83 (ENTRY POINT) LATITUDE = 40°15'08.11" (40.252253) LONGITUDE = 104°57'44.73" (104.962425)	NAD 83 (BTM PERF) LATITUDE = 40°15'07.16" (40.251989) LONGITUDE = 104°59'49.16" (104.996989)	NAD 83 (TARGET BOTTOM HOLE) LATITUDE = 40°15'07.14" (40.251983) LONGITUDE = 104°59'50.45" (104.997347)
NAD 27 (SURFACE LOCATION) LATITUDE = 40°15'33.71" (40.259364) LONGITUDE = 104°57'28.65" (104.957958)	NAD 27 (ENTRY POINT) LATITUDE = 40°15'08.17" (40.252269) LONGITUDE = 104°57'42.82" (104.961894)	NAD 27 (BTM PERF) LATITUDE = 40°15'07.21" (40.252003) LONGITUDE = 104°59'47.24" (104.996456)	NAD 27 (TARGET BOTTOM HOLE) LATITUDE = 40°15'07.20" (40.252000) LONGITUDE = 104°59'48.53" (104.996814)

REV: 3 10-05-17 K.B. (BTM PERF ADD & TBH CHANGE)

UINTEAH
LAND SURVEYING & LONG SURVEYING

UELS, LLC
Corporate Office * 85 South 200 East
Vernal, UT 84078 * (435) 789-1017

SURVEYED BY ZANE BULLARD, G.W.
DRAWN BY M.F.D.

04-11-16
07-21-16

SCALE
1" = 1000'

WELL LOCATION PLAT