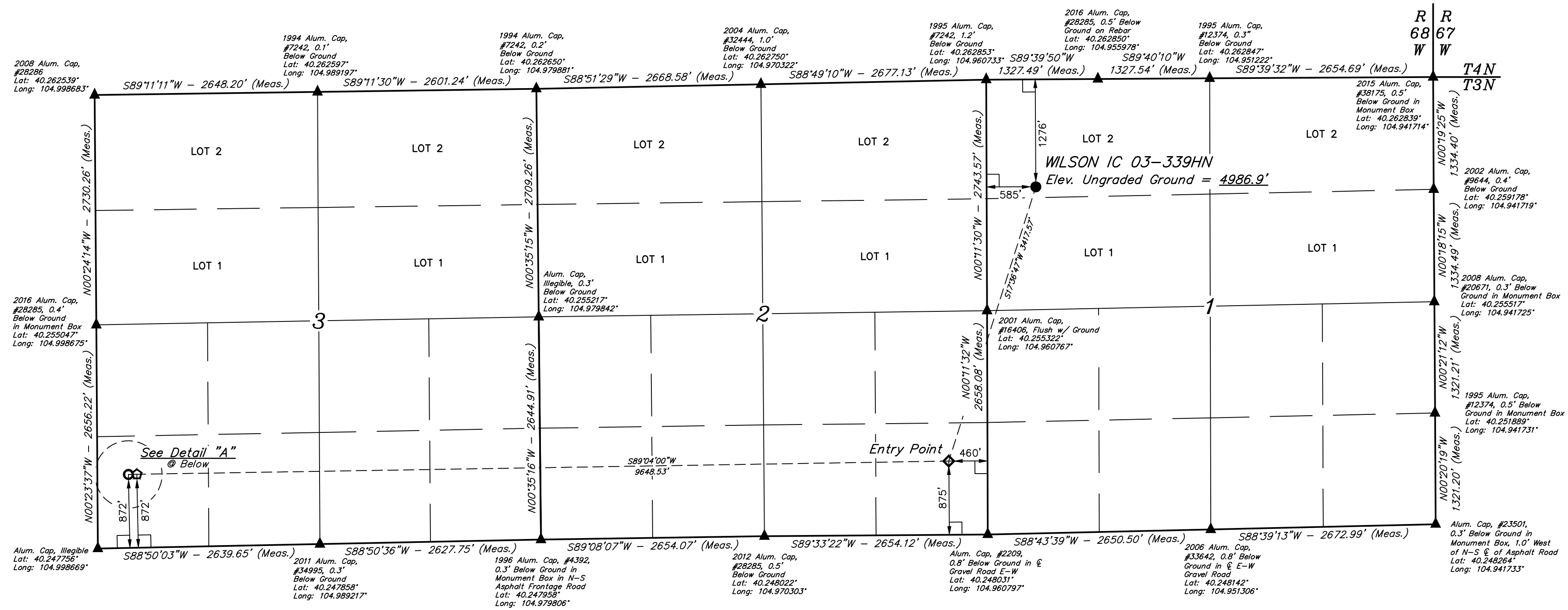
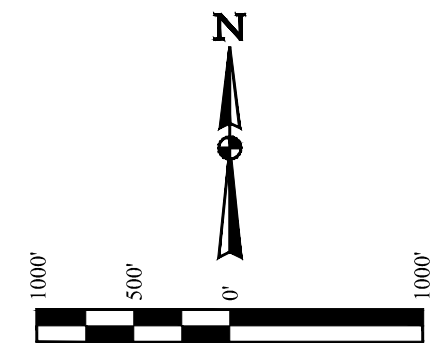


WILSON IC 03-339HN
NW 1/4 NW 1/4, SECTION 1, T3N, R68W, 6th P.M.
WELD COUNTY, COLORADO

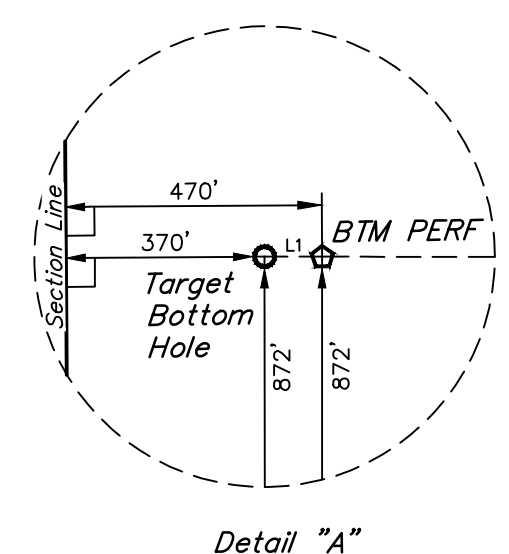
BASIS OF BEARINGS
BASIS OF ELEVATION

USGS COOPERATIVE BASE NETWORK CONTROL STATION,
DESIGNATION 'VERMILYEA'. NGS DATA SHEET LISTS THE NAVD
88 ELEVATION AS BEING 5026 FEET.



See Detail "A"
Below

LINE TABLE		
LINE	DIRECTION	LENGTH
L1	S88°50'03"W	100.01'



Detail "A"
No Scale

CERTIFICATE OF REGISTRATION
THIS IS TO CERTIFY THAT THE ABOVE...
NOTES OF ACTUAL SURVEYS MADE...
AND THAT THE SAME ARE TRUE AND CORRECT TO THE BEST OF MY
KNOWLEDGE AND BELIEF.

REGISTERED LAND SURVEYOR
RECEIVED NO. 28285
STATE OF COLORADO

REV: 3 10-05-17 K.B. (BTM PERF ADD & TBH CHANGE)

- LEGEND:
- = 90° SYMBOL
 - = PROPOSED WELLHEAD
 - ◆ = ENTRY POINT
 - = BTM PERF.
 - = TARGET BOTTOM HOLE
 - ▲ = SECTION CORNERS LOCATED. (NAD 83)

PDOP = 1.9

NAD 83 (SURFACE LOCATION)	NAD 83 (ENTRY POINT)	NAD 83 (BTM PERF)	NAD 83 (TARGET BOTTOM HOLE)
LATITUDE = 40°15'33.66" (40.259350)	LATITUDE = 40°15'01.54" (40.250428)	LATITUDE = 40°15'00.61" (40.250169)	LATITUDE = 40°15'00.59" (40.250164)
LONGITUDE = 104°57'31.15" (104.958653)	LONGITUDE = 104°57'44.76" (104.962433)	LONGITUDE = 104°59'49.16" (104.996989)	LONGITUDE = 104°59'50.45" (104.997347)
NAD 27 (SURFACE LOCATION)	NAD 27 (ENTRY POINT)	NAD 27 (BTM PERF)	NAD 27 (TARGET BOTTOM HOLE)
LATITUDE = 40°15'33.71" (40.259364)	LATITUDE = 40°15'01.60" (40.250444)	LATITUDE = 40°15'00.66" (40.250183)	LATITUDE = 40°15'00.65" (40.250181)
LONGITUDE = 104°57'29.23" (104.958119)	LONGITUDE = 104°57'42.84" (104.961900)	LONGITUDE = 104°59'47.23" (104.996453)	LONGITUDE = 104°59'48.52" (104.996811)

UELTS, LLC
Corporate Office * 85 South 200 East
Vernal, UT 84078 * (435) 789-1017

UINTEAH
LAND SURVEYING & ENGINEERING

SURVEYED BY ZANE BULLARD, G.W. 04-11-16 SCALE
DRAWN BY M.F.D. 07-21-16 1" = 1000'

WELL LOCATION PLAT