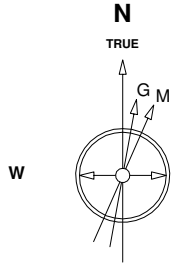


Great Western Operating Company, LLC

Location Colorado
Field Wattenburg
Installation Wilson
Slot Slot S05 - Wilson IC 03-342HNX
Well Wilson IC 03-342HNX
Wellbore Wilson IC 03-342HNX (PWB)

Created by admin
Date plotted 4-Oct-2017

Plot reference is Wilson IC 03-342HNX (PWB).
Ref wellpath is Wilson IC 03-342HNX (PWP#1).
Coordinates are in Feet reference Slot S05 - Wilson IC 03-342HNX.
True Vertical Depths are reference Rig Datum.
Measured Depths are reference Rig Datum.
Rig Datum: Planned Datum #1
Rig Datum to Mean Sea Level: 5005.80 ft.
Plot North is aligned to TRUE North.



Scale 1 cm = 400 ft

East (Feet) ->

-14400 -13600 -12800 -12000 -11200 -10400 -9600 -8800 -8000 -7200 -6400 -5600 -4800 -4000 -3200 -2400 -1600 -800 0 800

22-Sep-2016
IGRF Model [1900.0-2020.0] Dip: 66.73 deg Field: 52381.9 nT
Lat: N40 15 34.6500 Long: W104 57 32.1084 Elev: 4985.80 ft
Magnetic North is 8.38 deg East of TRUE North
To correct azimuth from Magnetic to TRUE add 8.38 deg

Scale 1 cm = 400 ft

Scale 1 cm = 400 ft

Scale 1 cm = 400 ft

Scale 1 cm = 400 ft

Scale 1 cm = 400 ft

Scale 1 cm = 400 ft

Scale 1 cm = 400 ft

Scale 1 cm = 400 ft

Scale 1 cm = 400 ft

Scale 1 cm = 400 ft

Scale 1 cm = 400 ft

Scale 1 cm = 400 ft

Scale 1 cm = 400 ft

Scale 1 cm = 400 ft

Scale 1 cm = 400 ft

Scale 1 cm = 400 ft

Scale 1 cm = 400 ft

Scale 1 cm = 400 ft

Scale 1 cm = 400 ft

Scale 1 cm = 400 ft

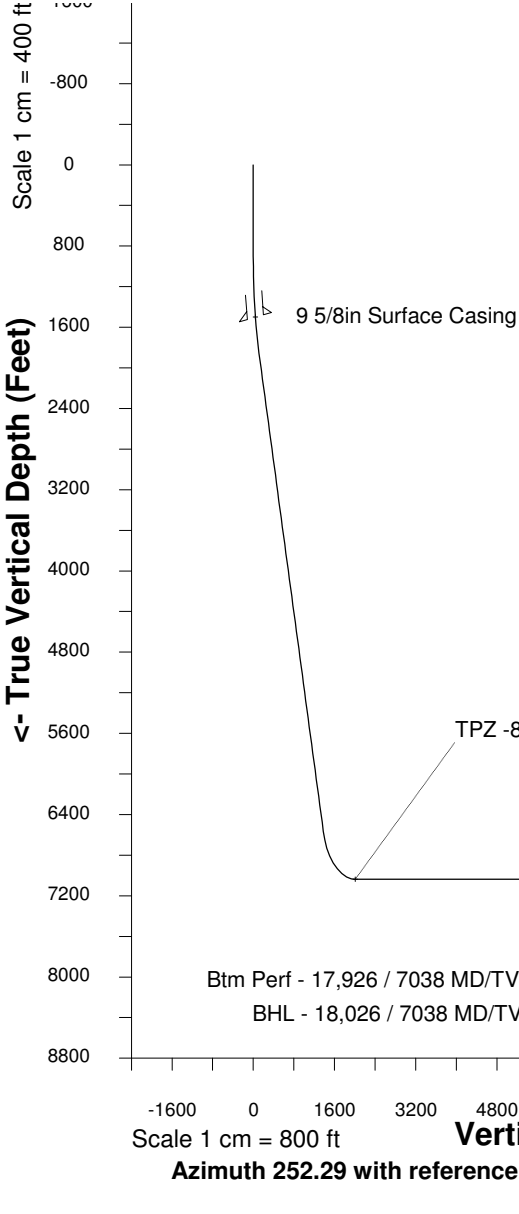
Scale 1 cm = 400 ft

Scale 1 cm = 400 ft

Scale 1 cm = 400 ft

Scale 1 cm = 400 ft

Scale 1 cm = 400 ft



Sec 3, T3N, R68W

Sec 2, T3N, R68W

Sec 1, T3N, R68W

Btm Perf - 17,926 / 7038 MD/TVD, 770 FSL, 470 FWL Sec 3

BHL - 18,026 / 7038 MD/TVD, 770 FSL, 370 FWL Sec 3

TPZ -8281 / 7038 MD/TVD, 772 FSL, 460 FEL Sec 2

TPZ -8281 / 7038 MD/TVD, 772 FSL, 460 FEL Sec 2

5 1/2in Production Casing

Btm Perf - 17,926 / 7038 MD/TVD, 770 FSL, 470 FWL Sec 3

BHL - 18,026 / 7038 MD/TVD, 770 FSL, 370 FWL Sec 3

Scale 1 cm = 800 ft

Vertical Section (Feet) ->

Azimuth 252.29 with reference 0.00 N, 0.00 E from Slot S05 - Wilson IC 03-342HNX

WELL PROFILE DATA

Point	MD	Inc	Azi	TVD	North	East	deg/100ft	V. Sect
Tie on	0.00	0.00	0.00	0.00	S 0.00	W 0.00		-0.00
KOP	900.00	0.00	188.73	900.00	S 0.00	W 0.00	0.00	-0.00
End of Build	1937.98	31.14	188.73	1887.63	S 272.00	W 41.78	9.84	122.54
End of Hold	7428.35	31.14	188.73	6586.91	S 3078.27	W 472.81	0.00	1386.79
Target TPZ -8... Sec 2	8280.53	90.00	269.46	7038.00	S 3352.66	W 1041.19	32.81	2011.70
Target Btm Pe... Sec 3	17926.08	90.00	269.46	7038.00	S 3444.36	W 10686.30	0.00	11227.63
End of Turn	17930.38	90.00	270.01	7038.00	S 3444.38	W 10690.60	42.65	11231.73
T.D. & Target BHL...c 3	18026.08	90.00	270.01	7038.00	S 3444.36	W 10786.30	0.00	11322.89