

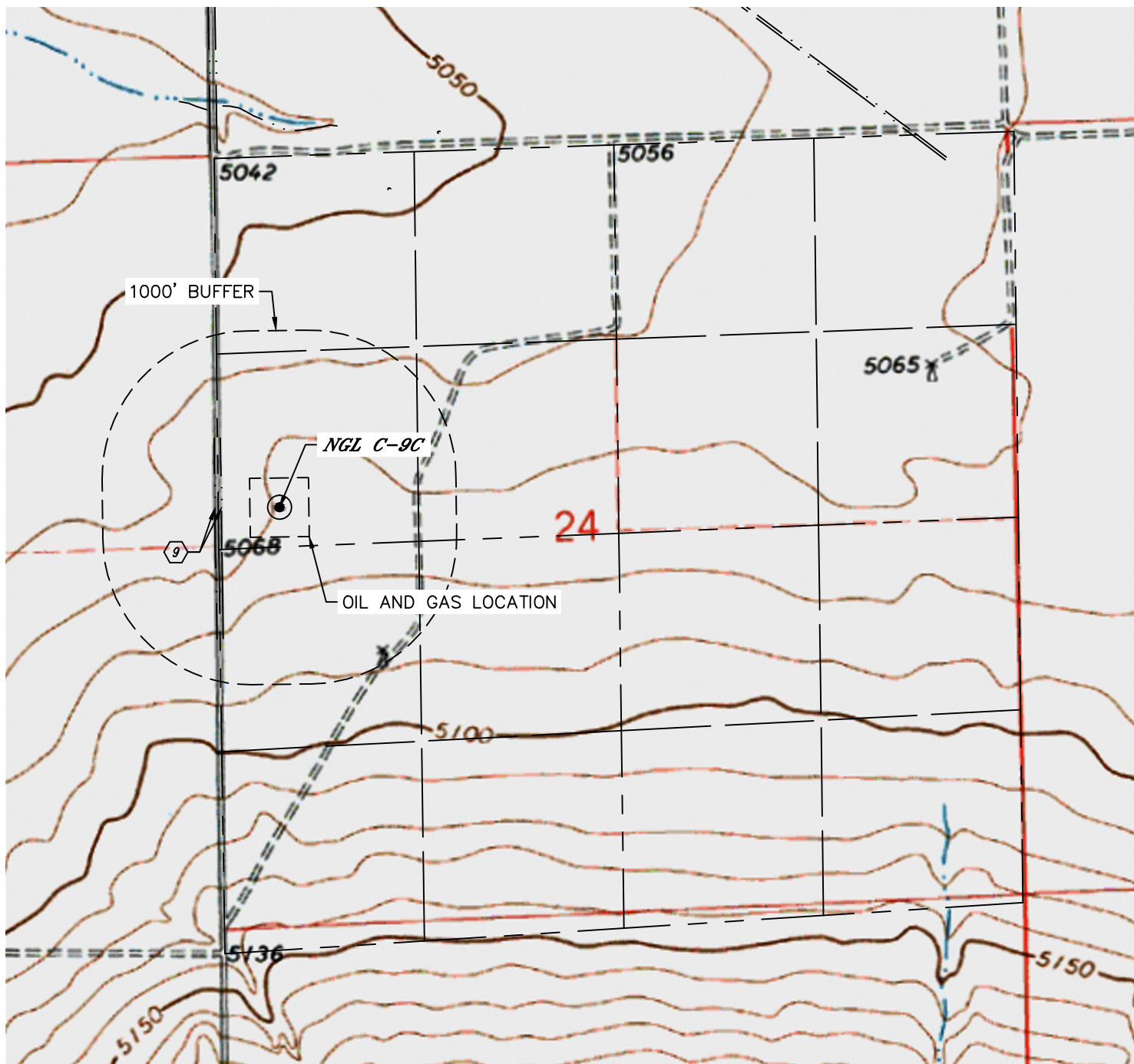


Lat40°, Inc. 6250 W. 10th Street, Unit 2, Greeley, CO 970-515-5294

HYDROLOGY MAP

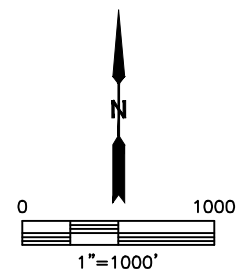
NGL C-9C

SECTION: 24
TOWNSHIP: 10N
RANGE: 61W
6TH. P.M.
WELD COUNTY, CO



DISTANCES MEASURED FROM THE EDGE OF THE OIL AND GAS LOCATION.

9 BARROW DITCH 193' & 238' W



DATE: 12/1/2017
PROJECT#: 2014109