



Lat40°, Inc. 6250 W. 10th Street, Unit 2, Greeley, CO 970-515-5294

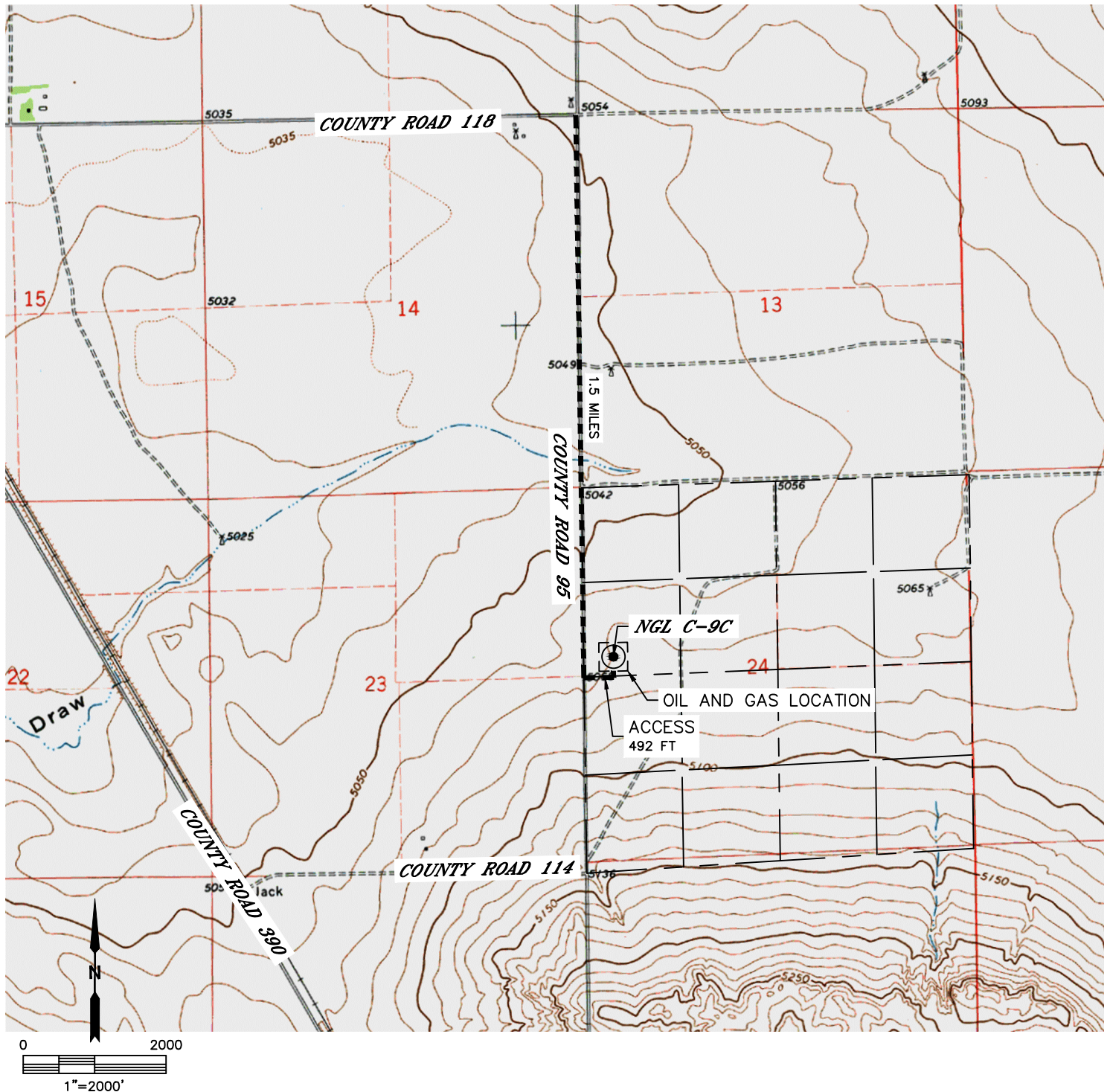
ACCESS ROAD MAP

NGL C-9C

SECTION: 24
TOWNSHIP: 10N
RANGE: 61W
6TH. P.M.
WELD COUNTY, CO

DRIVING DIRECTIONS TO NGL C-9C PAD

FROM THE INTERSECTION OF COUNTY ROAD 118 AND COUNTY ROAD 95, GO SOUTH ON COUNTY ROAD 95 FOR 1.5 MILES TO AN EXISTING FIELD ROAD TO THE EAST. GO EAST AND NORTH ON PROPOSED ACCESS FOR 492 FEET TO THE PROPOSED DRILL PAD.





Lat40 , Inc. 6250 W. 10th Street, Unit 2, Greeley, CO 970-515-5294

ACCESS ROAD MAP

NGL C-9C

SECTION: 24
TOWNSHIP: 10N
RANGE: 61W
6TH. P.M.
WELD COUNTY, CO

