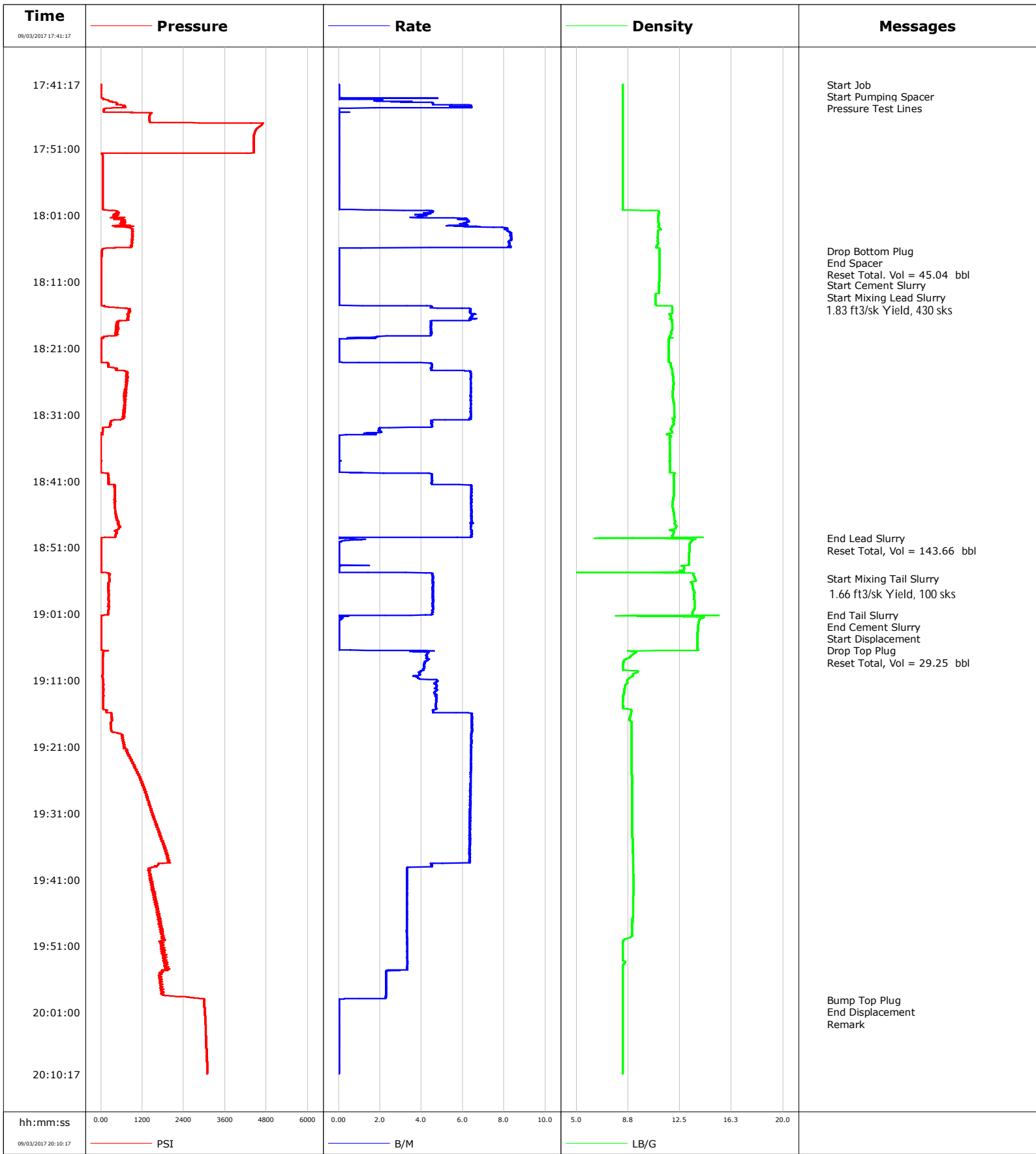


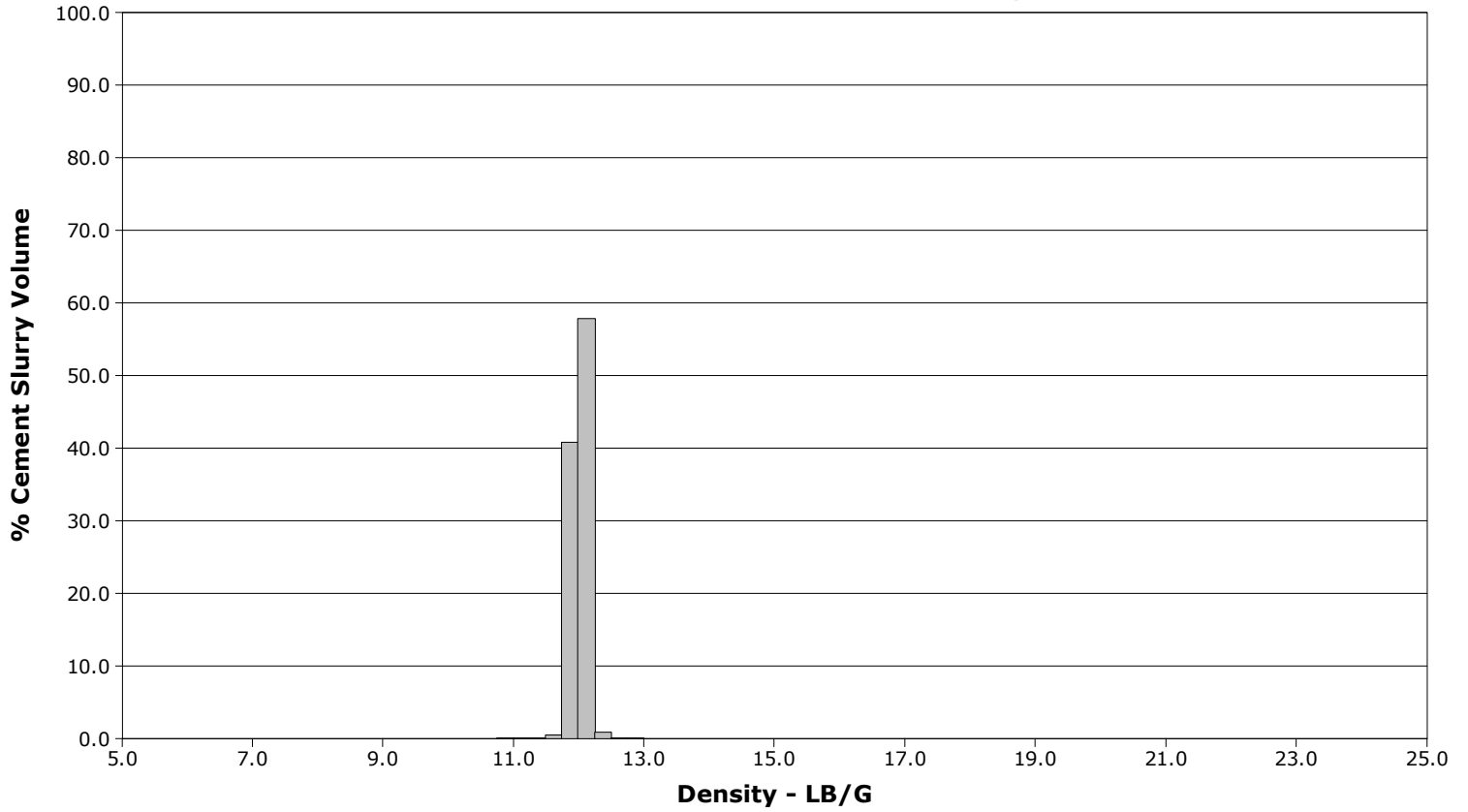
<b>Well</b>	NORDEN-1N-14HZ	<b>Client</b>	ANADARKO
<b>Field</b>	WATTENBERG	<b>SIR No.</b>	2569385
<b>Engineer</b>	NORM HASLAUER	<b>Job Type</b>	INTERMEDIATE
<b>Country</b>	United States	<b>Job Date</b>	09-03-2017



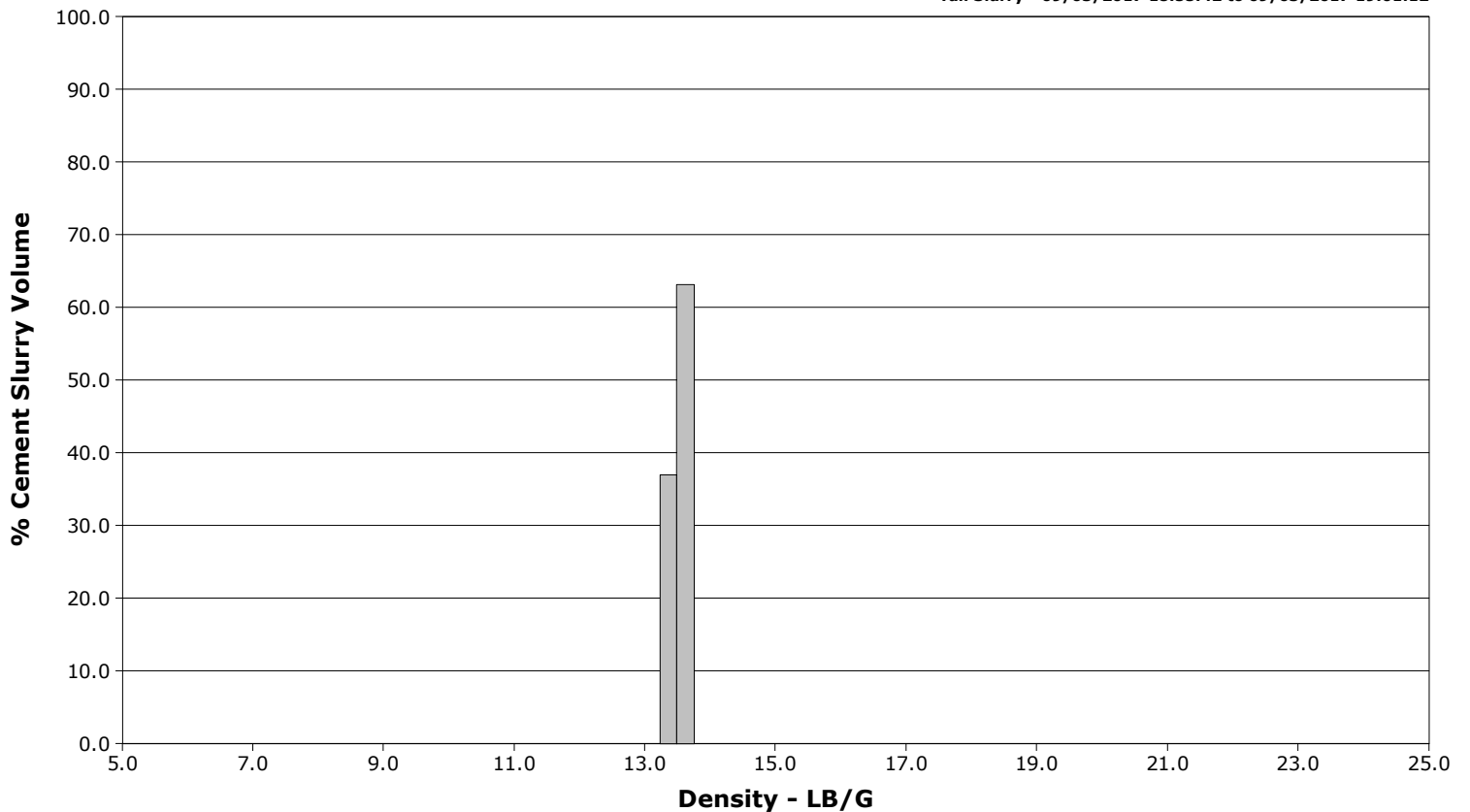
**Well** NORDEN-1N-14HZ  
**Field** WATTENBERG  
**Engineer** NORM HASLAUER  
**Country** United States

**Client** ANADARKO  
**SIR No.** 2569385  
**Job Type** INTERMIDATE  
**Job Date** 09-03-2017

Lead Slurry - 09/03/2017 18:11:37 to 09/03/2017 18:49:39



Tail Slurry - 09/03/2017 18:55:42 to 09/03/2017 19:01:12



					Customer			Job Number		
					ANADARKO			2569385		
Well		Location (legal)			Schlumberger Location			Job Start		
NORDEN-1N-14HZ								Sep/03/2017		
Field		Formation Name/Type		Deviation	Bit Size	Well MD		Well TVD		
WATTENBERG		Clean-Sandstone		deg	in	6346.0 m		6266.0 m		
County		State/Province			BHP	BHST	BHCT	Pore Press. Gradient		
WELD		Colorado			psi	220.00 degF	168.00 degF	lb/gal		
Well Master		API/UWI								
0631692323										
Rig Name	Drilled For		Service Via		Casing/Liner					
X24	Oil		Land		Depth, m	Size, in	Weight, lb/ft	Grade	Thread	
Offshore Zone	Well Class		Well Type		1868.0	9.6	36.0			
	New		Development		0.0	0.0	0.0			
Drilling Fluid Type		Max. Density	Plastic Viscosity		Tubing/Drill Pipe					
		lb/gal	cP		T/D	Depth, m	Size, in	Weight, lb/ft	Grade	Thread
Service Line	Job Type									
Cementing	INTERMIDATE									
Max. Allowed Tub. Press	Max. Allowed Ann. Press		WH Connection			Perforations/Open Hole				
psi	psi		Double Cement head			Top, m	Bottom, m	shot/ft	No. of Shots	Total Interval
Service Instructions					m	m			m	
					m	m			Diameter	
					m	m			in	
Treat Down		Displacement		Packer Type		Packer Depth				
Casing		240.0 bbl				m				
Tubing Vol.		Casing Vol.		Annular Vol.		Openhole Vol.				
bbl		243.0 bbl		bbl		bbl				
Casing/Tubing Secured		1 Hole Vol. Circulated prior to Cement			Casing Tools			Squeeze Job		
<input type="checkbox"/>		<input checked="" type="checkbox"/>								
Lift Pressure		1800.0 psi			Shoe Type		Float	Squeeze Type		
Pipe Rotated		Pipe Reciprocated			Shoe Depth		6346.0 m	Tool Type		
<input type="checkbox"/>		<input type="checkbox"/>								
No. Centralizers		Top Plugs	Bottom Plugs	Stage Tool Type			Tool Depth			
		1	1				m			
Cement Head Type				Stage Tool Depth			Tail Pipe Size			
				m			in			
Job Scheduled For		Arrived on Location		Leave Location		Collar Type		Float	Tail Pipe Depth	
Sep/03/2017		Sep/03/2017		Sep/03/2017					m	
						Collar Depth		6270.0 m	Sqz. Total Vol.	
									bbl	
Date	Time 24-hr clock	Treating Pressure PSI	Flow Rate B/M	Density LB/G	Volume BBL	Solid Fraction NULL	Message			
09/03/2017	17:41:17	1.4	0.0	8.35	0.0	0	Started Acquisition			
09/03/2017	17:41:18	2.3	0.0	8.35	0.0	0	Start Job			
09/03/2017	17:41:19	2.3	0.0	8.35	0.0	0	Start Pumping Spacer			
09/03/2017	17:41:26	0.6	0.0	8.35	0.0	0	Pressure Test Lines			
09/03/2017	17:41:47	1.1	0.0	8.36	0.0	0				
09/03/2017	17:42:17	-0.3	0.0	8.36	0.0	0				
09/03/2017	17:42:47	-0.3	0.0	8.35	0.0	0				
09/03/2017	17:43:17	1.4	0.0	8.35	0.0	0				
09/03/2017	17:43:47	229.7	1.8	8.35	0.8	0				
09/03/2017	17:44:17	456.6	4.6	8.36	2.7	0				
09/03/2017	17:44:47	709.0	6.4	8.36	5.7	0				
09/03/2017	17:45:17	84.4	0.0	8.36	6.0	0				
09/03/2017	17:45:47	1421.7	0.0	8.36	6.0	0				
09/03/2017	17:46:17	1403.6	0.0	8.36	6.0	0				
09/03/2017	17:46:47	1406.5	0.0	8.36	6.0	0				
09/03/2017	17:47:17	4670.1	0.0	8.36	6.0	0				
09/03/2017	17:47:47	4561.1	0.0	8.36	6.0	0				
09/03/2017	17:48:17	4475.9	0.0	8.36	6.0	0				
09/03/2017	17:48:47	4441.0	0.0	8.36	6.0	0				
09/03/2017	17:49:17	4431.2	0.0	8.36	6.0	0				
09/03/2017	17:49:47	4432.1	0.0	8.36	6.0	0				

Well			Field		Job Start	Customer		Job Number
NORDEN-1N-14HZ			WATTENBERG		Sep/03/2017	ANADARKO		2569385
Date	Time 24-hr clock	Treating Pressure PSI	Flow Rate B/M	Density LB/G	Volume BBL	Solid Fraction NULL	Message	
09/03/2017	17:50:47	4430.6	0.0	8.36	6.0	0		
09/03/2017	17:51:17	4426.4	0.0	8.36	6.0	0		
09/03/2017	17:51:47	32.3	0.0	8.36	6.0	0		
09/03/2017	17:52:17	46.6	0.0	8.36	6.0	0		
09/03/2017	17:52:47	46.9	0.0	8.36	6.0	0		
09/03/2017	17:53:17	47.5	0.0	8.36	6.0	0		
09/03/2017	17:53:47	48.1	0.0	8.36	6.0	0		
09/03/2017	17:54:17	47.5	0.0	8.36	6.0	0		
09/03/2017	17:54:47	47.5	0.0	8.36	6.0	0		
09/03/2017	17:55:17	48.9	0.0	8.36	6.0	0		
09/03/2017	17:55:47	47.5	0.0	8.36	6.0	0		
09/03/2017	17:56:17	47.8	0.0	8.36	6.0	0		
09/03/2017	17:56:47	47.8	0.0	8.36	6.0	0		
09/03/2017	17:57:17	48.4	0.0	8.36	6.0	0		
09/03/2017	17:57:47	48.1	0.0	8.36	6.0	0		
09/03/2017	17:58:17	48.4	0.0	8.36	6.0	0		
09/03/2017	17:58:47	47.8	0.0	8.36	6.0	0		
09/03/2017	17:59:17	47.5	0.0	8.36	6.0	0		
09/03/2017	17:59:47	48.4	0.0	8.36	6.0	0		
09/03/2017	18:00:17	324.7	4.3	10.43	6.3	42		
09/03/2017	18:00:47	390.0	4.1	10.96	8.5	42		
09/03/2017	18:01:17	348.5	3.8	10.94	10.5	41		
09/03/2017	18:01:47	638.9	6.3	10.95	13.3	24		
09/03/2017	18:02:17	697.2	5.9	10.96	16.4	23		
09/03/2017	18:02:47	837.1	7.5	10.95	19.4	31		
09/03/2017	18:03:17	913.0	8.2	10.91	23.5	36		
09/03/2017	18:03:47	918.4	8.3	10.91	27.6	37		
09/03/2017	18:04:17	917.3	8.3	10.88	31.8	36		
09/03/2017	18:04:47	917.5	8.3	10.89	35.9	35		
09/03/2017	18:05:17	903.5	8.3	10.91	40.0	19		
09/03/2017	18:05:47	889.5	8.3	10.83	44.2	64		
09/03/2017	18:06:17	28.3	0.0	11.01	45.0	83		
09/03/2017	18:06:23	25.7	0.0	11.01	45.0	83	Drop Bottom Plug	
09/03/2017	18:06:25	24.3	0.0	11.01	45.0	83	End Spacer	
09/03/2017	18:06:27	24.0	0.0	11.01	45.0	83	Reset Total, Vol = 45.04 bbl	
09/03/2017	18:06:47	18.3	0.0	11.00	45.0	0		
09/03/2017	18:07:17	14.9	0.0	11.00	45.0	0		
09/03/2017	18:07:47	13.2	0.0	11.00	45.0	0		
09/03/2017	18:08:17	11.2	0.0	11.00	45.0	0		
09/03/2017	18:08:47	10.3	0.0	11.00	45.0	0		
09/03/2017	18:09:17	8.6	0.0	11.00	45.0	0		
09/03/2017	18:09:47	8.6	0.0	11.00	45.0	0		
09/03/2017	18:10:17	7.7	0.0	11.00	45.0	0		
09/03/2017	18:10:47	8.0	0.0	11.00	45.0	0		
09/03/2017	18:11:17	7.7	0.0	10.99	45.0	0		
09/03/2017	18:11:32	7.4	0.0	10.99	45.0	0	Start Cement Slurry	
09/03/2017	18:11:37	7.4	0.0	10.99	45.0	0	Start Mixing Lead Slurry	
09/03/2017	18:11:47	7.2	0.0	10.99	45.0	0		
09/03/2017	18:12:17	6.9	0.0	10.99	45.0	0		
09/03/2017	18:12:47	6.9	0.0	10.97	45.0	0		
09/03/2017	18:13:17	7.2	0.0	10.72	45.0	0		
09/03/2017	18:13:47	6.6	0.0	10.72	45.0	0		
09/03/2017	18:14:47	205.4	4.5	11.95	45.8	78		
09/03/2017	18:15:17	809.1	6.4	11.95	48.6	77		

Well NORDEN-1N-14HZ			Field WATTENBERG		Job Start Sep/03/2017	Customer ANADARKO		Job Number 2569385
Date	Time 24-hr clock	Treating Pressure PSI	Flow Rate B/M	Density LB/G	Volume BBL	Solid Fraction NULL	Message	
09/03/2017	18:16:17	790.8	6.5	11.84	55.1	71		
09/03/2017	18:16:47	791.1	6.4	11.93	58.3	48		
09/03/2017	18:17:17	465.8	4.5	11.93	60.6	49		
09/03/2017	18:17:47	435.5	4.4	11.95	62.9	52		
09/03/2017	18:18:17	498.4	4.4	11.93	65.1	49		
09/03/2017	18:18:47	433.7	4.4	11.89	67.3	47		
09/03/2017	18:19:17	78.4	1.9	11.75	69.3	54		
09/03/2017	18:19:47	3.7	0.0	11.69	69.7	0		
09/03/2017	18:20:17	1.1	0.0	11.69	69.7	0		
09/03/2017	18:20:47	2.0	0.0	11.69	69.7	0		
09/03/2017	18:21:17	2.0	0.0	11.70	69.7	0		
09/03/2017	18:21:47	2.0	0.0	11.69	69.7	0		
09/03/2017	18:22:17	2.6	0.0	11.70	69.7	0		
09/03/2017	18:22:47	3.1	0.0	11.70	69.7	0		
09/03/2017	18:23:17	210.0	4.5	11.84	70.1	57		
09/03/2017	18:23:47	210.3	4.5	11.86	72.4	58		
09/03/2017	18:24:17	418.3	4.5	11.94	74.6	58		
09/03/2017	18:24:47	738.2	6.4	11.96	77.6	57		
09/03/2017	18:25:17	773.3	6.4	12.01	80.8	56		
09/03/2017	18:25:47	735.6	6.4	12.01	84.0	55		
09/03/2017	18:26:17	746.2	6.4	12.04	87.2	53		
09/03/2017	18:26:47	748.5	6.4	12.02	90.3	52		
09/03/2017	18:27:17	742.4	6.4	12.00	93.5	51		
09/03/2017	18:27:47	680.9	6.4	11.97	96.7	50		
09/03/2017	18:28:17	724.4	6.4	11.99	99.9	50		
09/03/2017	18:28:47	679.5	6.4	12.01	103.1	49		
09/03/2017	18:29:17	675.8	6.4	12.06	106.3	49		
09/03/2017	18:29:47	682.7	6.4	12.09	109.5	49		
09/03/2017	18:30:17	686.9	6.4	12.09	112.7	48		
09/03/2017	18:30:47	646.3	6.4	12.10	115.9	48		
09/03/2017	18:31:17	675.5	6.4	12.12	119.1	48		
09/03/2017	18:31:47	565.1	6.3	12.07	122.2	49		
09/03/2017	18:32:17	281.0	4.5	12.06	124.5	49		
09/03/2017	18:32:47	253.2	4.5	11.93	126.8	46		
09/03/2017	18:33:17	49.5	2.0	11.85	128.2	45		
09/03/2017	18:33:47	29.8	1.3	11.93	129.2	45		
09/03/2017	18:34:17	-3.7	0.0	11.82	129.6	0		
09/03/2017	18:34:47	-3.4	0.0	11.77	129.6	0		
09/03/2017	18:35:17	-2.0	0.0	11.76	129.6	0		
09/03/2017	18:35:47	-1.7	0.0	11.77	129.6	0		
09/03/2017	18:36:17	-1.4	0.0	11.77	129.6	0		
09/03/2017	18:36:47	-0.9	0.0	11.78	129.6	0		
09/03/2017	18:37:17	-0.9	0.0	11.78	129.6	0		
09/03/2017	18:37:47	-0.0	0.0	11.78	129.6	0		
09/03/2017	18:38:17	-1.4	0.0	11.78	129.6	0		
09/03/2017	18:38:47	-2.3	0.0	11.78	129.6	0		
09/03/2017	18:39:17	-0.9	0.0	11.78	129.6	0		
09/03/2017	18:39:47	56.4	1.0	12.08	129.7	47		
09/03/2017	18:40:17	207.1	4.5	12.06	131.8	47		
09/03/2017	18:40:47	218.9	4.5	12.04	134.0	48		
09/03/2017	18:41:17	222.0	4.5	12.06	136.3	48		
09/03/2017	18:41:47	385.1	6.4	12.05	139.0	48		
09/03/2017	18:42:17	404.8	6.4	12.06	142.2	48		
09/03/2017	18:42:47	400.3	6.4	12.06	145.4	47		

Well NORDEN-1N-14HZ			Field WATTENBERG		Job Start Sep/03/2017	Customer ANADARKO		Job Number 2569385
Date	Time 24-hr clock	Treating Pressure PSI	Flow Rate B/M	Density LB/G	Volume BBL	Solid Fraction NULL	Message	
09/03/2017	18:43:47	402.3	6.4	12.00	151.8	47		
09/03/2017	18:44:17	390.5	6.4	11.98	155.0	46		
09/03/2017	18:44:47	389.4	6.4	11.96	158.2	46		
09/03/2017	18:45:17	408.6	6.4	12.01	161.4	46		
09/03/2017	18:45:47	426.9	6.4	12.05	164.6	47		
09/03/2017	18:46:17	426.9	6.4	12.08	167.8	47		
09/03/2017	18:46:47	464.4	6.4	12.08	171.0	47		
09/03/2017	18:47:17	514.4	6.5	12.14	174.2	46		
09/03/2017	18:47:47	554.2	6.4	12.26	177.4	53		
09/03/2017	18:48:17	503.0	6.4	12.11	180.6	71		
09/03/2017	18:48:47	454.9	6.4	12.04	183.8	79		
09/03/2017	18:49:17	428.9	6.4	11.93	187.0	80		
09/03/2017	18:49:39	3.7	0.0	8.35	188.4	0		End Lead Slurry
09/03/2017	18:49:47	2.9	1.1	13.63	188.5	0		
09/03/2017	18:50:06	2.6	0.1	13.33	188.7	0		Reset Total, Vol = 143.66 bbl
09/03/2017	18:50:17	2.0	0.0	13.25	188.7	0		
09/03/2017	18:50:47	1.1	0.0	13.20	188.7	0		
09/03/2017	18:51:17	2.0	0.0	13.19	188.7	0		
09/03/2017	18:51:47	2.0	0.0	13.18	188.7	0		
09/03/2017	18:52:17	1.7	0.0	13.17	188.7	0		
09/03/2017	18:52:47	1.1	0.0	13.17	188.7	0		
09/03/2017	18:53:17	1.7	0.0	13.16	188.7	0		
09/03/2017	18:53:47	0.6	0.1	12.66	188.7	0		
09/03/2017	18:54:17	0.9	0.0	12.80	188.8	0		
09/03/2017	18:54:47	15.7	0.0	5.06	188.8	58		
09/03/2017	18:55:17	232.6	4.5	13.49	190.9	58		
09/03/2017	18:55:42	236.9	4.6	13.59	192.8	60		Start Mixing Tail Slurry
09/03/2017	18:55:47	245.8	4.5	13.61	193.2	60		
09/03/2017	18:56:17	226.6	4.6	13.27	195.4	59		
09/03/2017	18:56:47	208.9	4.6	13.41	197.7	49		
09/03/2017	18:57:17	222.9	4.6	13.46	200.0	49		
09/03/2017	18:57:47	213.1	4.6	13.55	202.3	51		
09/03/2017	18:58:17	224.0	4.6	13.51	204.6	46		
09/03/2017	18:58:47	217.4	4.6	13.51	206.8	37		
09/03/2017	18:59:17	236.3	4.6	13.56	209.1	15		
09/03/2017	18:59:47	220.6	4.5	13.55	211.4	72		
09/03/2017	19:00:17	215.4	4.6	13.55	213.7	73		
09/03/2017	19:00:47	216.0	4.6	13.40	215.9	72		
09/03/2017	19:01:12	98.4	4.2	13.40	217.8	66		End Tail Slurry
09/03/2017	19:01:13	98.4	3.5	13.57	217.9	66		End Cement Slurry
09/03/2017	19:01:14	68.4	2.2	15.35	217.9	66		Start Displacement
09/03/2017	19:01:17	8.3	0.0	9.06	217.9	0		
09/03/2017	19:01:20	7.4	0.0	8.81	217.9	0		Drop Top Plug
09/03/2017	19:01:29	6.9	0.0	14.25	218.0	0		Reset Total, Vol = 29.25 bbl
09/03/2017	19:01:47	5.2	0.1	13.95	218.0	0		
09/03/2017	19:02:17	4.9	0.0	13.85	218.0	0		
09/03/2017	19:02:47	4.3	0.0	13.82	218.0	0		
09/03/2017	19:03:17	4.3	0.0	13.80	218.0	0		
09/03/2017	19:03:47	4.3	0.0	13.79	218.0	0		
09/03/2017	19:04:17	4.3	0.0	13.79	218.0	0		
09/03/2017	19:04:47	4.9	0.0	13.76	218.0	0		
09/03/2017	19:05:17	4.0	0.0	13.77	218.0	0		
09/03/2017	19:05:47	5.2	0.0	13.77	218.0	0		
09/03/2017	19:06:17	5.4	0.0	13.77	218.0	0		

Well			Field		Job Start	Customer		Job Number
NORDEN-1N-14HZ			WATTENBERG		Sep/03/2017	ANADARKO		2569385
Date	Time 24-hr clock	Treating Pressure PSI	Flow Rate B/M	Density LB/G	Volume BBL	Solid Fraction NULL	Message	
09/03/2017	19:07:17	57.2	4.2	9.01	221.3	21		
09/03/2017	19:07:47	54.1	4.3	8.59	223.4	36		
09/03/2017	19:08:17	50.4	4.2	8.40	225.5	48		
09/03/2017	19:08:47	51.2	4.1	8.39	227.6	59		
09/03/2017	19:09:17	49.8	4.1	8.38	229.7	66		
09/03/2017	19:09:47	45.5	3.9	9.45	231.7	56		
09/03/2017	19:10:17	42.9	3.8	9.07	233.6	33		
09/03/2017	19:10:47	44.1	3.9	8.78	235.5	53		
09/03/2017	19:11:17	64.7	4.7	8.69	237.8	0		
09/03/2017	19:11:47	70.4	4.7	8.54	240.2	48		
09/03/2017	19:12:17	70.4	4.7	8.49	242.5	23		
09/03/2017	19:12:47	68.1	4.7	8.46	244.9	0		
09/03/2017	19:13:17	70.7	4.7	8.40	247.2	48		
09/03/2017	19:13:47	68.4	4.7	8.38	249.6	35		
09/03/2017	19:14:17	65.5	4.7	8.37	251.9	31		
09/03/2017	19:14:47	64.4	4.7	8.37	254.3	0		
09/03/2017	19:15:17	70.1	4.8	8.41	256.6	0		
09/03/2017	19:15:47	157.1	4.6	8.98	258.9	0		
09/03/2017	19:16:17	306.4	6.4	8.92	261.9	0		
09/03/2017	19:16:47	299.8	6.4	8.87	265.1	0		
09/03/2017	19:17:17	290.4	6.4	9.01	268.4	0		
09/03/2017	19:17:47	287.3	6.4	9.00	271.6	0		
09/03/2017	19:18:17	276.7	6.4	9.01	274.8	0		
09/03/2017	19:18:47	327.3	6.5	9.01	278.0	0		
09/03/2017	19:19:17	626.3	6.4	9.01	281.2	0		
09/03/2017	19:19:47	613.7	6.4	9.01	284.4	0		
09/03/2017	19:20:17	658.0	6.4	9.01	287.6	0		
09/03/2017	19:20:47	685.5	6.4	9.01	290.8	0		
09/03/2017	19:21:17	658.9	6.4	9.01	294.0	0		
09/03/2017	19:21:47	765.0	6.4	9.01	297.2	0		
09/03/2017	19:22:17	826.3	6.4	9.01	300.4	0		
09/03/2017	19:22:47	834.6	6.4	9.01	303.6	0		
09/03/2017	19:23:17	912.7	6.4	9.01	306.8	0		
09/03/2017	19:23:47	970.8	6.4	9.01	310.0	0		
09/03/2017	19:24:17	986.8	6.4	9.01	313.2	0		
09/03/2017	19:24:47	1064.3	6.4	9.01	316.4	0		
09/03/2017	19:25:17	1077.5	6.4	9.02	319.6	0		
09/03/2017	19:25:47	1124.7	6.4	9.02	322.8	0		
09/03/2017	19:26:17	1191.9	6.4	9.02	326.0	0		
09/03/2017	19:26:47	1189.9	6.4	9.02	329.2	0		
09/03/2017	19:27:17	1242.3	6.4	9.03	332.3	0		
09/03/2017	19:27:47	1296.3	6.4	9.03	335.5	0		
09/03/2017	19:28:17	1294.9	6.4	9.03	338.7	0		
09/03/2017	19:28:47	1339.6	6.4	9.03	341.9	0		
09/03/2017	19:29:17	1389.3	6.4	9.03	345.1	0		
09/03/2017	19:29:47	1390.2	6.4	9.03	348.2	0		
09/03/2017	19:30:17	1447.7	6.3	9.04	351.4	0		
09/03/2017	19:30:47	1492.9	6.3	9.04	354.6	0		
09/03/2017	19:31:17	1480.3	6.4	9.04	357.8	0		
09/03/2017	19:31:47	1550.1	6.4	9.04	360.9	0		
09/03/2017	19:32:17	1588.7	6.4	9.05	364.1	0		
09/03/2017	19:32:47	1583.9	6.3	9.04	367.3	0		
09/03/2017	19:33:17	1653.4	6.4	9.05	370.5	0		
09/03/2017	19:33:47	1692.0	6.3	9.05	373.6	0		

Well			Field		Job Start	Customer		Job Number
NORDEN-1N-14HZ			WATTENBERG		Sep/03/2017	ANADARKO		2569385
Date	Time 24-hr clock	Treating Pressure PSI	Flow Rate B/M	Density LB/G	Volume BBL	Solid Fraction NULL	Message	
09/03/2017	19:34:47	1759.8	6.3	9.06	380.0	0		
09/03/2017	19:35:17	1757.8	6.3	9.07	383.1	0		
09/03/2017	19:35:47	1806.2	6.3	9.07	386.3	0		
09/03/2017	19:36:17	1870.6	6.3	9.07	389.5	0		
09/03/2017	19:36:47	1862.6	6.3	9.09	392.6	0		
09/03/2017	19:37:17	1914.6	6.3	9.09	395.8	0		
09/03/2017	19:37:47	1922.6	6.3	9.10	399.0	0		
09/03/2017	19:38:17	1947.5	6.3	9.12	402.1	0		
09/03/2017	19:38:47	1655.4	4.5	9.12	404.9	0		
09/03/2017	19:39:17	1419.4	3.3	9.12	406.9	0		
09/03/2017	19:39:47	1388.2	3.3	9.12	408.6	0		
09/03/2017	19:40:17	1443.7	3.3	9.13	410.2	0		
09/03/2017	19:40:47	1420.5	3.3	9.14	411.9	0		
09/03/2017	19:41:17	1458.0	3.3	9.14	413.5	0		
09/03/2017	19:41:47	1513.2	3.3	9.14	415.2	0		
09/03/2017	19:42:17	1502.9	3.3	9.14	416.8	0		
09/03/2017	19:42:47	1512.9	3.3	9.15	418.5	0		
09/03/2017	19:43:17	1509.2	3.3	9.14	420.1	0		
09/03/2017	19:43:47	1563.9	3.3	9.10	421.8	0		
09/03/2017	19:44:17	1606.5	3.3	9.10	423.4	0		
09/03/2017	19:44:47	1561.6	3.3	9.10	425.1	0		
09/03/2017	19:45:17	1645.7	3.3	9.10	426.7	0		
09/03/2017	19:45:47	1654.0	3.3	9.10	428.3	0		
09/03/2017	19:46:17	1614.8	3.3	9.10	430.0	0		
09/03/2017	19:46:47	1714.9	3.3	9.08	431.6	0		
09/03/2017	19:47:17	1706.3	3.3	9.06	433.3	0		
09/03/2017	19:47:47	1670.9	3.3	9.05	434.9	0		
09/03/2017	19:48:17	1773.0	3.3	9.05	436.6	0		
09/03/2017	19:48:47	1762.1	3.3	9.05	438.2	0		
09/03/2017	19:49:17	1745.5	3.3	9.05	439.9	0		
09/03/2017	19:49:47	1838.5	3.3	8.86	441.5	0		
09/03/2017	19:50:17	1751.3	3.3	8.39	443.2	0		
09/03/2017	19:50:47	1733.2	3.3	8.37	444.8	0		
09/03/2017	19:51:17	1791.6	3.3	8.36	446.5	0		
09/03/2017	19:51:47	1751.0	3.3	8.36	448.1	0		
09/03/2017	19:52:17	1831.9	3.3	8.36	449.8	0		
09/03/2017	19:52:47	1879.2	3.3	8.36	451.4	0		
09/03/2017	19:53:17	1831.9	3.3	8.42	453.1	0		
09/03/2017	19:53:47	1862.0	3.3	8.44	454.8	0		
09/03/2017	19:54:17	1888.0	3.3	8.36	456.4	0		
09/03/2017	19:54:47	1766.4	2.3	8.36	458.0	0		
09/03/2017	19:55:17	1746.4	2.3	8.36	459.1	0		
09/03/2017	19:55:47	1692.3	2.3	8.36	460.3	0		
09/03/2017	19:56:17	1710.3	2.3	8.36	461.4	0		
09/03/2017	19:56:47	1784.2	2.3	8.36	462.5	0		
09/03/2017	19:57:17	1724.4	2.3	8.36	463.7	0		
09/03/2017	19:57:47	1748.1	2.3	8.36	464.8	0		
09/03/2017	19:58:17	1763.3	2.3	8.36	466.0	0		
09/03/2017	19:58:47	2619.6	2.3	8.36	467.1	0		
09/03/2017	19:59:11	2987.5	0.0	8.36	467.5	0	Bump Top Plug	
09/03/2017	19:59:15	2988.1	0.0	8.36	467.5	0	End Displacement	
09/03/2017	19:59:17	2989.2	0.0	8.36	467.5	0		
09/03/2017	19:59:47	2994.4	0.0	8.36	467.5	0		
09/03/2017	20:00:01	2997.3	0.0	8.36	467.5	0	Remark	

Well			Field		Job Start	Customer		Job Number
NORDEN-1N-14HZ			WATTENBERG		Sep/03/2017	ANADARKO		2569385
Date	Time 24-hr clock	Treating Pressure PSI	Flow Rate B/M	Density LB/G	Volume BBL	Solid Fraction NULL	Message	
09/03/2017	20:00:47	3007.3	0.0	8.36	467.5	0		
09/03/2017	20:01:17	3012.7	0.0	8.36	467.5	0		
09/03/2017	20:01:47	3018.4	0.0	8.36	467.5	0		
09/03/2017	20:02:17	3022.4	0.0	8.36	467.5	0		
09/03/2017	20:02:47	3028.4	0.0	8.36	467.5	0		
09/03/2017	20:03:17	3032.4	0.0	8.36	467.5	0		
09/03/2017	20:03:47	3037.0	0.0	8.36	467.5	0		
09/03/2017	20:04:17	3041.3	0.0	8.36	467.5	0		
09/03/2017	20:04:47	3045.3	0.0	8.36	467.5	0		
09/03/2017	20:05:17	3048.8	0.0	8.36	467.5	0		
09/03/2017	20:05:47	3053.0	0.0	8.37	467.5	0		
09/03/2017	20:06:17	3056.5	0.0	8.36	467.5	0		
09/03/2017	20:06:47	3059.9	0.0	8.37	467.5	0		
09/03/2017	20:07:17	3064.8	0.0	8.37	467.5	0		
09/03/2017	20:07:47	3067.6	0.0	8.36	467.5	0		
09/03/2017	20:08:17	3070.5	0.0	8.36	467.5	0		
09/03/2017	20:08:47	3074.5	0.0	8.36	467.5	0		
09/03/2017	20:09:17	3077.9	0.0	8.36	467.5	0		
09/03/2017	20:09:47	3081.4	0.0	8.37	467.5	0		

### Post Job Summary

Average Pump Rates, bbl/min				Volume of Fluid Injected, bbl			
Slurry	N2	Mud	Maximum Rate 8.0	Total Slurry 168.0	Mud 0.0	Spacer 40.0	N2
Treating Pressure Summary, psi				Breakdown Fluid			
Maximum 444.6	Final 0.0	Average	Bump Plug to 3000.0	Breakdown	Type	Volume bbl	Density lb/gal
Avg. N2 Percent %	Designed Slurry Volume 166.0 bbl	Displacement 139.0 bbl	Mix Water Temp 65.00 degF	Cement Circulated to Surface? <input checked="" type="checkbox"/>	Volume 20.0 bbl	Washed Thru Perfs <input type="checkbox"/>	To m
Customer or Authorized Representative Levi Rogers			Schlumberger Supervisor NORM HASLAUER		Circulation Lost <input type="checkbox"/>	Job Completed <input checked="" type="checkbox"/>	
					-	-	