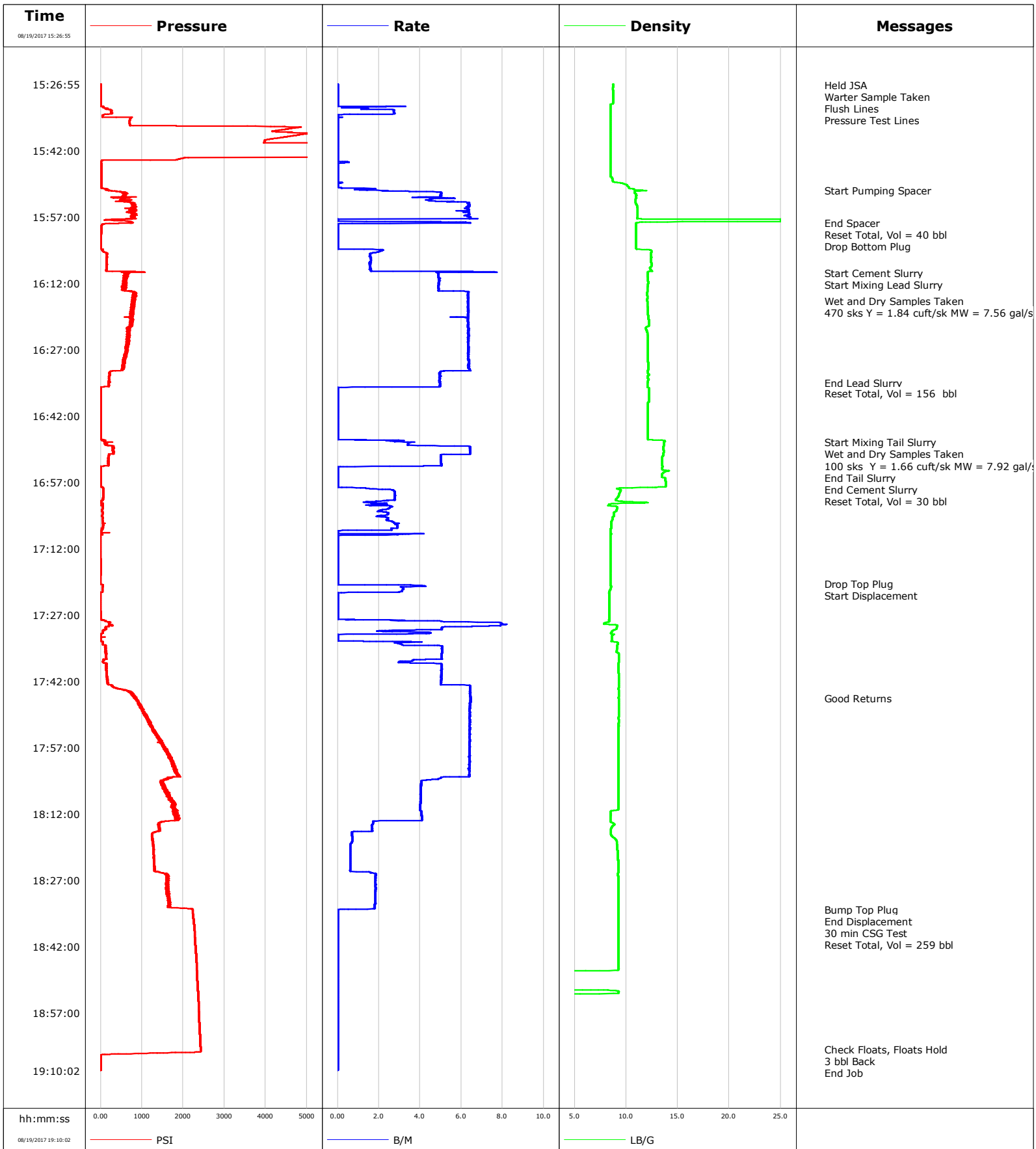


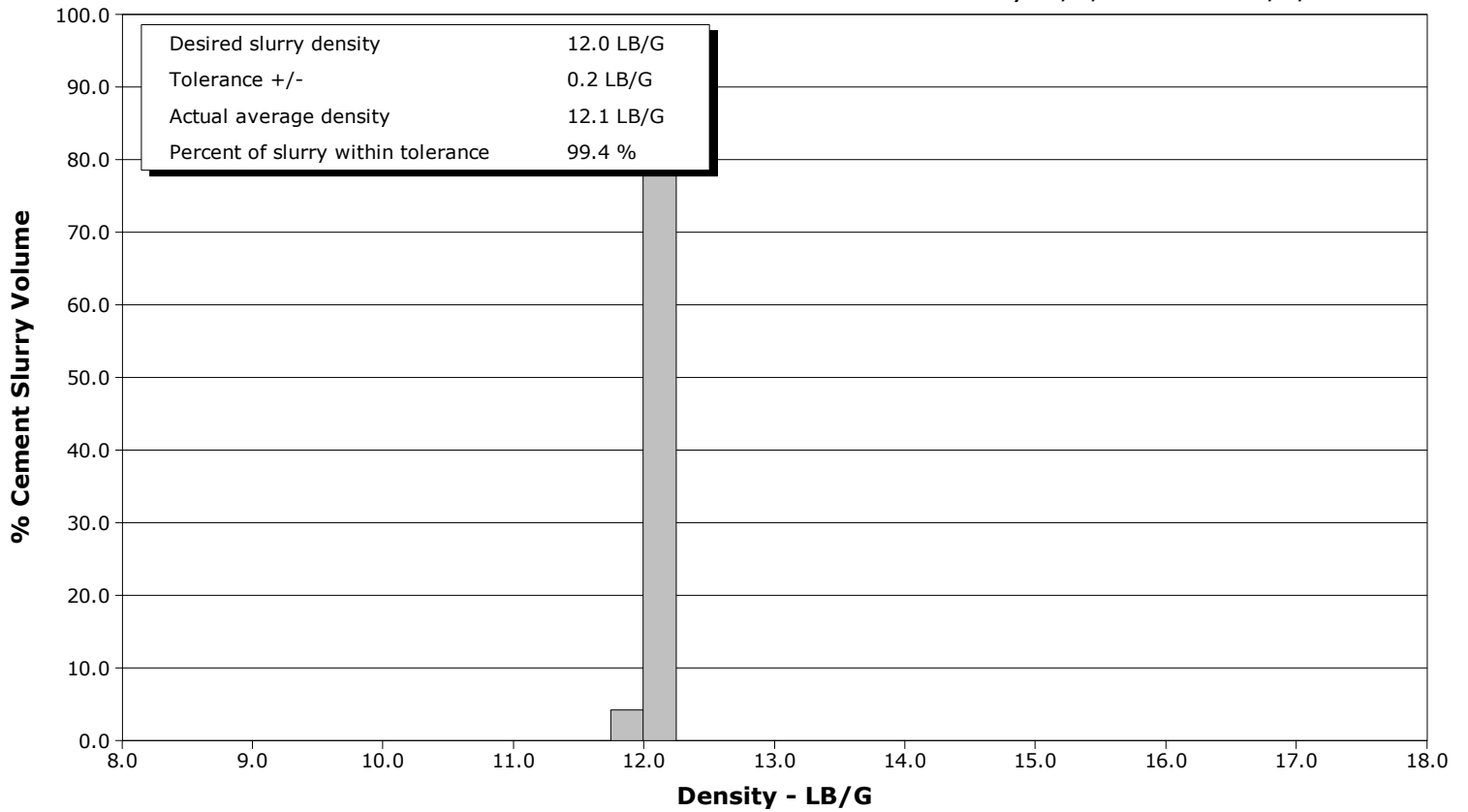
<b>Well</b>	Norden 26N-14HZ	<b>Client</b>	Anadarko
<b>Field</b>	Wattenberg	<b>SIR No.</b>	CSS9-00614
<b>Engineer</b>	Ryan Call	<b>Job Type</b>	7" Intermediate
<b>Country</b>	United States	<b>Job Date</b>	08-19-2017



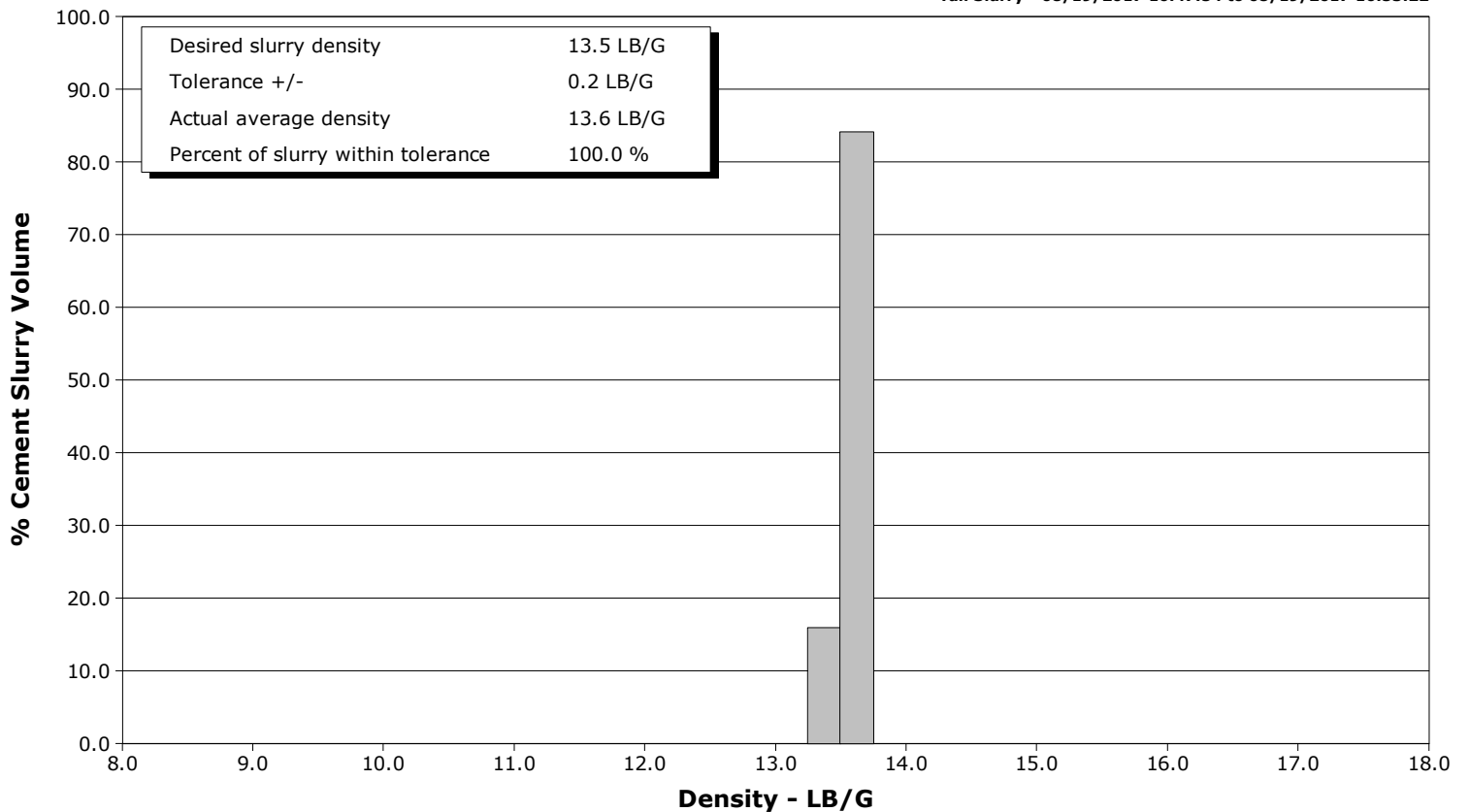
**Well** Norden 26N-14HZ  
**Field** Wattenberg  
**Engineer** Ryan Call  
**Country** United States

**Client** Anadarko  
**SIR No.** CSS9-00614  
**Job Type** 7" Intermediate  
**Job Date** 08-19-2017

**Lead Slurry - 08/19/2017 16:09:36 to 08/19/2017 16:34:35**



**Tail Slurry - 08/19/2017 16:47:54 to 08/19/2017 16:53:22**



				Customer			Job Number			
				Anadarko			CSS9-00614			
Well		Location (legal)			Schlumberger Location			Job Start		
Norden 26N-14HZ		X24			CWY			Aug/19/2017		
Field		Formation Name/Type			Deviation	Bit Size		Well MD	Well TVD	
Wattenberg					deg	8.5 in		6855.0 ft	6494.0 ft	
County		State/Province			BHP	BHST	BHCT	Pore Press. Gradient		
Weld		CO			psi	224 degF	173 degF	lb/gal		
Well Master		API/UWI								
0631692082		05123435770000								
Rig Name	Drilled For		Service Via		Casing/Liner					
X24	Oil & Gas		Land		Depth, ft	Size, in	Weight, lb/ft	Grade	Thread	
Offshore Zone	Well Class		Well Type		1855.0	9.6	36.0	J-55	8 RD	
	New		Development		6844.0	7.0	26.0	N-80	8 rd	
Drilling Fluid Type		Max. Density	Plastic Viscosity		Tubing/Drill Pipe					
OBM		9.30 lb/gal	cP		T/D	Depth, ft	Size, in	Weight, lb/ft	Grade	Thread
Service Line	Job Type									
Cementing	7" Intermediate									
Max. Allowed Tub. Press	Max. Allowed Ann. Press		WH Connection		Perforations/Open Hole					
psi	psi		Single Plug HEad		Top, ft	Bottom, ft	shot/ft	No. of Shots	Total Interval	
					ft	ft			ft	
					ft	ft			Diameter	
					ft	ft			in	
Service Instructions	Treat Down	Displacement		Packer Type		Packer Depth				
9 5/8" 36# Previous Casing: 1,855' 8 1/2" to TD // OH Excess: 6% Top of Lead Cement: 0' Top of Tail Cement: 5,855' TD: 6,855' (6,494') Temp Gradient 2.3 degF/100ft from Gradient Map -- Bring 7" Head (Double Plug), Bowls, SLB Top and Bottom Plugs --Bring Defoamer, 400 lbs Sugar, and CemPRIME SCRUB Surfactant and Fiber	Casing	bbl				ft				
	Tubing Vol.	Casing Vol.		Annular Vol.		Openhole Vol.				
	bbl	bbl		bbl		bbl				
Casing/Tubing Secured	1 Hole Vol. Circulated prior to Cement	Casing Tools			Squeeze Job					
<input type="checkbox"/>	<input type="checkbox"/>									
Lift Pressure	2300 psi	Shoe Type		Float	Squeeze Type					
Pipe Rotated	<input type="checkbox"/>	Shoe Depth		6844.0 ft	Tool Type					
No. Centralizers	Top Plugs 1	Bottom Plugs 1	Stage Tool Type		Tool Depth					
	1	1			ft					
Cement Head Type	Double Plu	Stage Tool Depth		ft	Tail Pipe Size					
					in					
Job Scheduled For	Arrived on Location		Leave Location		Collar Type		Float	Tail Pipe Depth		
Aug/19/2017 14:00	Aug/19/2017 14:00		Aug/19/2017 20:00		Collar Depth		6757.0 ft	Sqz. Total Vol.		
								bbl		
Date	Time 24-hr clock	Treating Pressure PSI	Flow Rate B/M	Density LB/G	Volume BBL	Message				
08/19/2017	15:26:55	3	0.0	8.73	0.0	Started Acquisition				
08/19/2017	15:27:03	3	0.0	8.73	0.0	Held JSA				
08/19/2017	15:28:55	3	0.0	8.74	0.0					
08/19/2017	15:30:09	4	0.0	8.75	0.0	Flush Lines				
08/19/2017	15:30:55	4	0.0	8.74	0.0					
08/19/2017	15:32:55	246	2.7	8.46	1.6					
08/19/2017	15:34:13	45	0.0	8.47	3.9	Pressure Test Lines				
08/19/2017	15:34:55	710	0.0	8.46	3.9					
08/19/2017	15:36:55	4662	0.0	8.46	3.9					
08/19/2017	15:38:55	4449	0.0	8.46	3.9					
08/19/2017	15:40:55	5916	0.0	8.46	3.9					
08/19/2017	15:42:55	5919	0.0	8.46	3.9					
08/19/2017	15:44:55	13	0.0	8.46	4.0					
08/19/2017	15:46:55	14	0.0	8.46	4.0					
08/19/2017	15:48:55	15	0.0	8.70	4.0					
08/19/2017	15:50:55	157	1.5	11.23	4.7					
08/19/2017	15:50:56	187	1.4	11.45	4.7	Start Pumping Spacer				
08/19/2017	15:52:55	552	4.6	10.93	13.7					
08/19/2017	15:54:55	828	6.4	11.09	25.4					
08/19/2017	15:56:55	758	6.4	11.10	37.9					
08/19/2017	15:58:17	780	6.4	11.04	42.7	End Spacer				

Well Norden 26N-14HZ			Field Wattenberg		Job Start Aug/19/2017	Customer Anadarko		Job Number CSS9-00614
Date	Time 24-hr clock	Treating Pressure PSI	Flow Rate B/M	Density LB/G	Volume BBL	Message		
08/19/2017	15:58:19	786	6.4	11.00	42.9	Drop Bottom Plug		
08/19/2017	15:58:55	23	0.0	10.96	43.7			
08/19/2017	16:00:55	12	0.0	10.95	43.7			
08/19/2017	16:02:55	10	0.0	10.96	43.7			
08/19/2017	16:04:55	77	2.0	12.43	45.0			
08/19/2017	16:06:55	143	1.6	12.39	48.3			
08/19/2017	16:08:55	133	1.6	12.36	51.4			
08/19/2017	16:09:35	623	4.9	12.08	53.9	Start Cement Slurry		
08/19/2017	16:09:36	619	4.9	12.08	54.0	Start Mixing Lead Slurry		
08/19/2017	16:10:55	617	4.9	12.09	60.4			
08/19/2017	16:12:55	622	4.9	12.08	70.2			
08/19/2017	16:14:55	836	6.3	12.04	81.7			
08/19/2017	16:15:59	834	6.3	12.03	88.4	Wet and Dry Samples Taken		
08/19/2017	16:16:00	823	6.3	12.03	88.6	470 sks Y = 1.84 cuft/sk MW = 7.56 gal/sk		
08/19/2017	16:16:55	832	6.3	12.07	94.3			
08/19/2017	16:18:55	772	6.3	12.11	107.0			
08/19/2017	16:20:55	732	6.3	12.19	119.6			
08/19/2017	16:22:55	669	6.3	12.01	132.3			
08/19/2017	16:24:55	682	6.4	12.11	144.9			
08/19/2017	16:26:55	654	6.3	12.12	157.6			
08/19/2017	16:28:55	577	6.3	12.12	170.3			
08/19/2017	16:30:55	521	6.4	12.15	183.0			
08/19/2017	16:32:55	209	5.0	12.09	194.1			
08/19/2017	16:34:35	188	4.9	12.03	202.4	End Lead Slurry		
08/19/2017	16:34:55	193	5.0	12.04	204.0			
08/19/2017	16:36:49	7	0.0	12.21	206.7	Reset Total, Vol = 156 bbl		
08/19/2017	16:36:55	6	0.0	12.21	206.7			
08/19/2017	16:38:55	6	0.0	12.14	206.7			
08/19/2017	16:40:55	5	0.0	12.10	206.7			
08/19/2017	16:42:55	5	0.0	12.10	206.7			
08/19/2017	16:44:55	4	0.0	12.10	206.7			
08/19/2017	16:46:55	3	0.0	12.11	206.7			
08/19/2017	16:47:54	277	3.4	13.68	208.0	Start Mixing Tail Slurry		
08/19/2017	16:48:36	167	3.4	13.66	210.4	Wet and Dry Samples Taken		
08/19/2017	16:48:55	301	6.4	13.61	212.1			
08/19/2017	16:50:55	195	5.0	13.60	224.6			
08/19/2017	16:52:55	181	5.0	13.50	234.6			
08/19/2017	16:53:22	71	2.7	13.52	236.8	End Tail Slurry		
08/19/2017	16:53:23	1	2.5	13.52	236.8	End Cement Slurry		
08/19/2017	16:53:31	0	0.1	13.52	236.9	Reset Total, Vol = 30 bbl		
08/19/2017	16:54:55	2	0.0	13.58	236.9			
08/19/2017	16:56:55	6	0.0	13.81	236.9			
08/19/2017	16:58:55	64	2.7	9.43	238.4			
08/19/2017	17:00:55	58	2.8	8.99	243.9			
08/19/2017	17:02:55	46	2.5	9.12	248.3			
08/19/2017	17:04:55	47	2.3	8.68	252.8			
08/19/2017	17:06:55	58	2.9	8.57	258.0			
08/19/2017	17:08:55	-23	2.3	8.46	261.6			
08/19/2017	17:10:55	-4	0.0	8.47	261.7			
08/19/2017	17:12:55	-4	0.0	8.47	261.7			
08/19/2017	17:14:55	2	0.0	8.48	261.7			
08/19/2017	17:16:55	0	0.0	8.48	261.7			
08/19/2017	17:18:55	-1	0.0	8.47	261.7			
08/19/2017	17:19:59	-1	0.0	8.47	261.7	Drop Top Plug		

Well Norden 26N-14HZ			Field Wattenberg		Job Start Aug/19/2017	Customer Anadarko	Job Number CSS9-00614
Date	Time 24-hr clock	Treating Pressure PSI	Flow Rate B/M	Density LB/G	Volume BBL	Message	
08/19/2017	17:20:55	44	3.2	8.52	264.4		
08/19/2017	17:22:55	-5	0.0	8.35	267.4		
08/19/2017	17:24:55	-2	0.0	8.35	267.4		
08/19/2017	17:26:55	1	0.0	8.35	267.4		
08/19/2017	17:28:55	213	8.0	7.85	272.0		
08/19/2017	17:30:55	51	4.4	8.59	282.8		
08/19/2017	17:32:55	11	0.8	8.58	284.6		
08/19/2017	17:34:55	131	5.1	9.10	292.7		
08/19/2017	17:36:55	135	5.0	9.27	302.8		
08/19/2017	17:38:55	128	5.0	9.25	311.5		
08/19/2017	17:40:55	156	5.0	9.27	321.6		
08/19/2017	17:42:55	260	6.4	9.26	331.7		
08/19/2017	17:44:55	754	6.4	9.26	344.6		
08/19/2017	17:45:51	857	6.4	9.26	350.6		Good Returns
08/19/2017	17:46:55	956	6.4	9.26	357.5		
08/19/2017	17:48:55	1026	6.4	9.26	370.3		
08/19/2017	17:50:55	1149	6.4	9.26	383.1		
08/19/2017	17:52:55	1304	6.4	9.26	395.9		
08/19/2017	17:54:55	1385	6.4	9.26	408.7		
08/19/2017	17:56:55	1542	6.4	9.25	421.5		
08/19/2017	17:58:55	1678	6.4	9.26	434.3		
08/19/2017	18:00:55	1728	6.4	9.26	447.1		
08/19/2017	18:02:55	1872	6.4	9.25	459.8		
08/19/2017	18:04:55	1512	4.1	9.25	470.2		
08/19/2017	18:06:55	1544	4.0	9.25	478.3		
08/19/2017	18:08:55	1692	4.0	9.25	486.3		
08/19/2017	18:10:55	1829	4.0	9.25	494.3		
08/19/2017	18:12:55	1846	4.1	8.48	502.4		
08/19/2017	18:14:55	1405	1.7	8.63	507.4		
08/19/2017	18:16:55	1247	0.7	8.58	509.8		
08/19/2017	18:18:55	1278	0.6	9.11	511.2		
08/19/2017	18:20:55	1293	0.6	9.19	512.4		
08/19/2017	18:22:55	1299	0.6	9.21	513.6		
08/19/2017	18:24:55	1312	0.6	9.21	514.8		
08/19/2017	18:26:55	1587	1.8	9.23	518.2		
08/19/2017	18:28:55	1647	1.8	9.23	521.9		
08/19/2017	18:30:55	1653	1.8	9.25	525.6		
08/19/2017	18:32:55	1671	1.8	9.25	529.2		
08/19/2017	18:33:35	2220	0.3	9.25	530.3		Bump Top Plug
08/19/2017	18:33:36	2228	0.2	9.25	530.4		End Displacement
08/19/2017	18:34:19	2232	0.0	9.25	530.4		30 min CSG Test
08/19/2017	18:34:55	2241	0.0	9.25	530.4		
08/19/2017	18:36:55	2260	0.0	9.25	530.4		
08/19/2017	18:38:55	2277	0.0	9.25	530.4		
08/19/2017	18:39:08	2279	0.0	9.25	530.4		Reset Total, Vol = 259 bbl
08/19/2017	18:40:55	2291	0.0	9.25	530.4		
08/19/2017	18:42:55	2305	0.0	9.25	530.4		
08/19/2017	18:44:55	2317	0.0	9.26	530.4		
08/19/2017	18:46:55	2329	0.0	9.26	530.4		
08/19/2017	18:48:55	2340	0.0	0.10	530.4		
08/19/2017	18:50:55	2351	0.0	0.01	530.4		
08/19/2017	18:52:55	2361	0.0	0.10	530.4		
08/19/2017	18:54:55	2372	0.0	0.01	530.4		
08/19/2017	18:56:55	2381	0.0	0.01	530.4		

Well		Field		Job Start		Customer		Job Number	
Norden 26N-14HZ		Wattenberg		Aug/19/2017		Anadarko		CSS9-00614	
Date	Time 24-hr clock	Treating Pressure PSI	Flow Rate B/M	Density LB/G	Volume BBL	Message			
08/19/2017	19:00:55	2400	0.0	0.01	530.4				
08/19/2017	19:02:55	2409	0.0	0.01	530.4				
08/19/2017	19:04:55	2418	0.0	0.01	530.4				
08/19/2017	19:05:11	2419	0.0	0.01	530.4	Check Floats, Floats Hold			
08/19/2017	19:05:20	2419	0.0	0.01	530.4	3 bbl Back			
08/19/2017	19:06:55	3	0.0	0.01	530.4				
08/19/2017	19:08:55	2	0.0	0.01	530.4				

### Post Job Summary

Average Pump Rates, bbl/min					Volume of Fluid Injected, bbl			
Slurry	N2	Mud	Maximum Rate	Total Slurry	Mud	Spacer	N2	
4.3			8.2	184.0	0.0	40.0		
Treating Pressure Summary, psi					Breakdown Fluid			
Maximum	Final	Average	Bump Plug to	Breakdown	Type	Volume	Density	
6240	2	1016	1700			bbl	lb/gal	
Avg. N2 Percent	Designed Slurry Volume	Displacement	Mix Water Temp	Cement Circulated to Surface?	Volume			
%	0.0 bbl	259.0 bbl	71 degF	<input checked="" type="checkbox"/>	20.0 bbl		To ft	
Customer or Authorized Representative			Schlumberger Supervisor	Washed Thru Perfs	Circulation Lost	Job Completed		
Ryan Call				<input type="checkbox"/>	<input type="checkbox"/>	<input checked="" type="checkbox"/>		