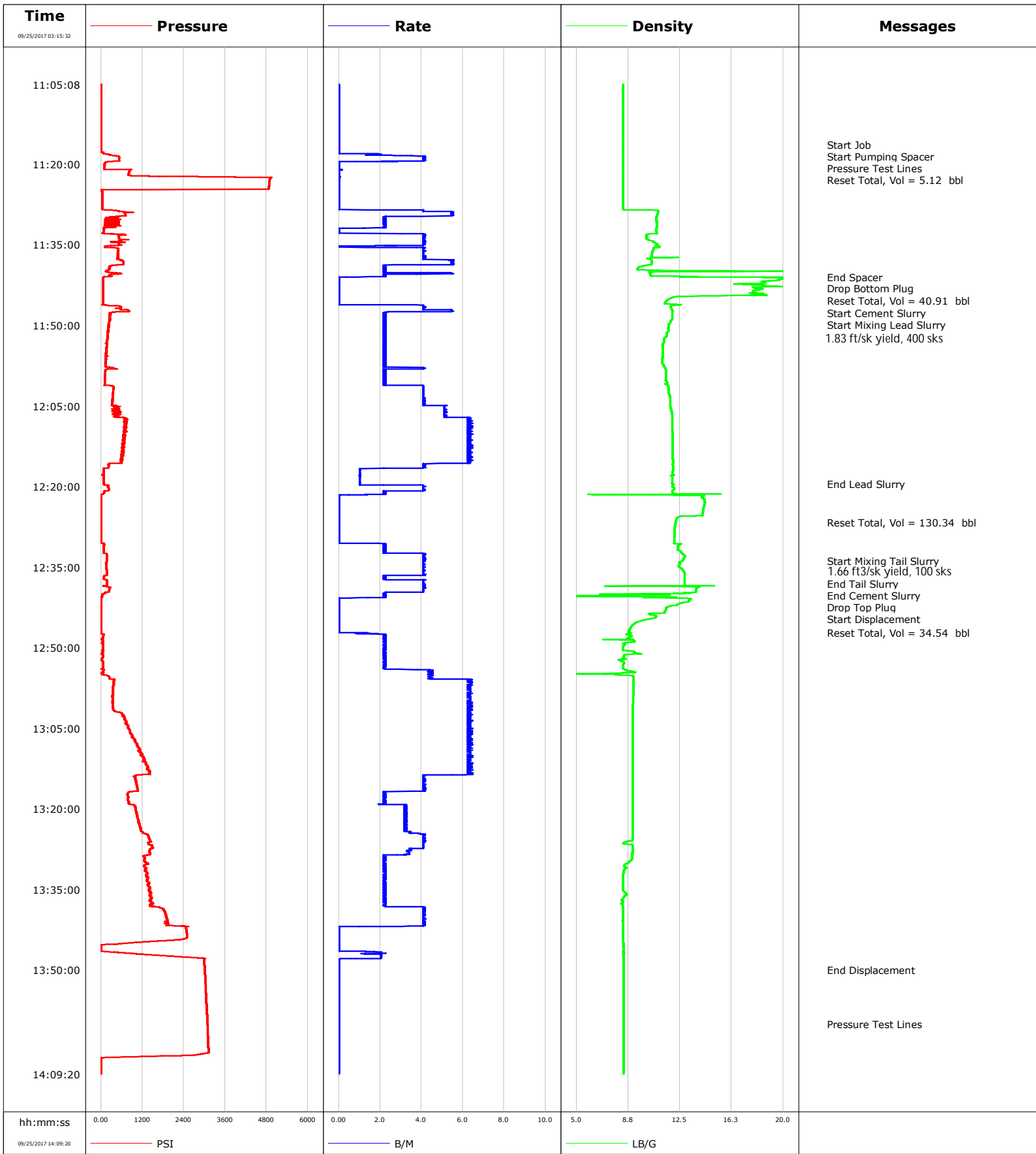


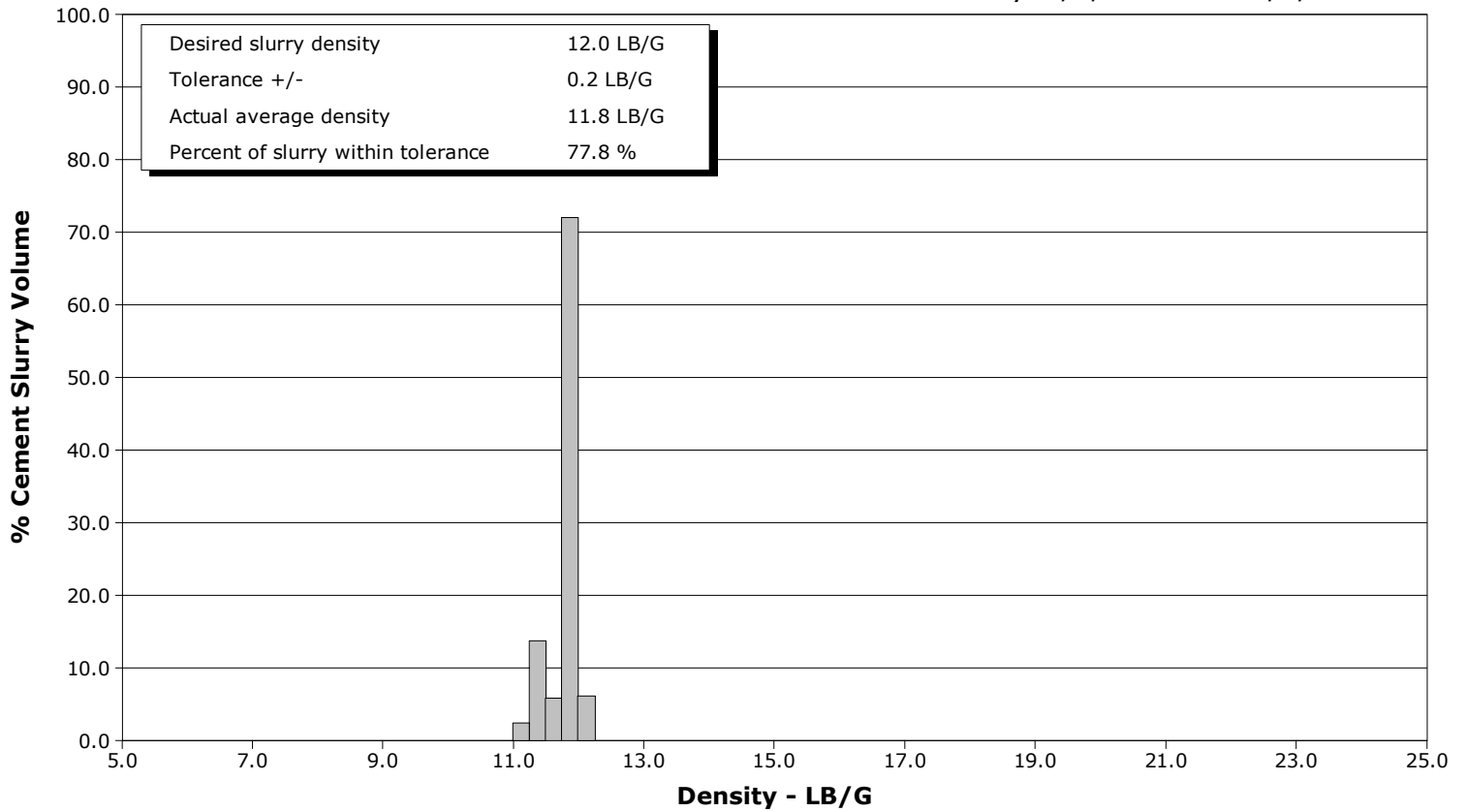
<b>Well</b>	NORDEN 2C-14HZ	<b>Client</b>	ANADARKO
<b>Field</b>	WATTENBERG	<b>SIR No.</b>	2585087
<b>Engineer</b>	NORM HASLAER	<b>Job Type</b>	INTERMEDIATE
<b>Country</b>	United States	<b>Job Date</b>	09-25-2017



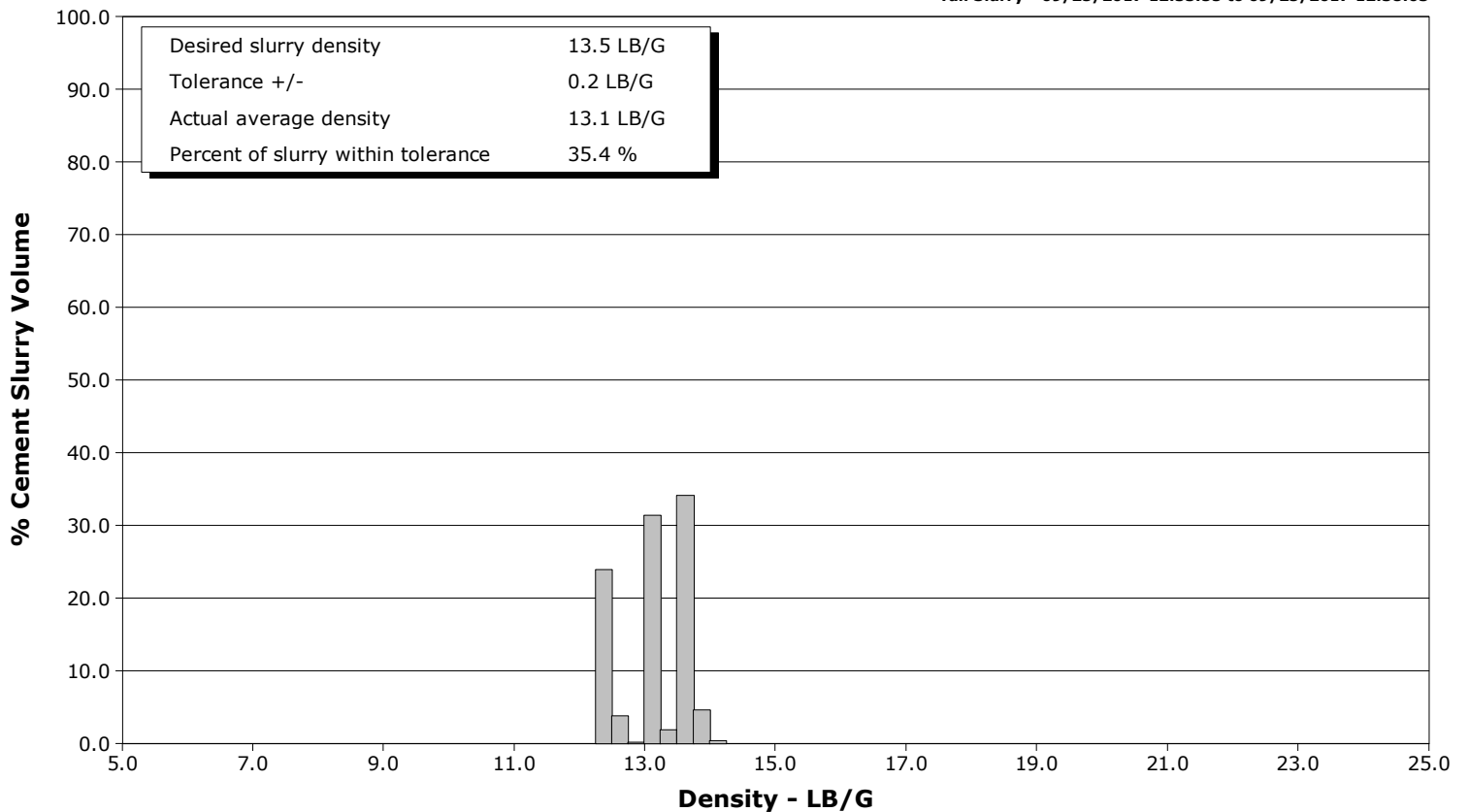
**Well** NORDEN 2C-14HZ  
**Field** WATTENBERG  
**Engineer** NORM HASLAER  
**Country** United States

**Client** ANADARKO  
**SIR No.** 2585087  
**Job Type** INTERMEDIATE  
**Job Date** 09-25-2017

Lead Slurry - 09/25/2017 11:47:43 to 09/25/2017 12:19:29



Tail Slurry - 09/25/2017 12:33:55 to 09/25/2017 12:38:03



					Customer			Job Number				
					ANADARKO			2585087				
Well			Location (legal)			Schlumberger Location			Job Start			
NORDEN 2C-14HZ									Sep/25/2017			
Field		Formation Name/Type			Deviation		Bit Size		Well MD		Well TVD	
WATTENBERG		5894			deg		in		5894.0 m		5807.0 m	
County		State/Province			BHP		BHST		BHCT		Pore Press. Gradient	
WELD		Colorado			psi		199.00 degF		148.00 degF		lb/gal	
Well Master		API/UWI										
0631692322												
Rig Name	Drilled For		Service Via		Casing/Liner							
X24	Oil & Gas		Land		Depth, m		Size, in		Weight, lb/ft		Grade	Thread
Offshore Zone	Well Class		Well Type		1884.0		9.6		36.0			
	New		Development		5894.0		7.0		26.0			
Drilling Fluid Type		Max. Density	Plastic Viscosity		Tubing/Drill Pipe							
		lb/gal	cP		T/D	Depth, m	Size, in	Weight, lb/ft	Grade	Thread		
Service Line		Job Type										
Cementing		INTERMEDIATE										
Max. Allowed Tub. Press	Max. Allowed Ann. Press		WH Connection		Perforations/Open Hole							
psi	psi		Double Cement head		Top, m		Bottom, m		shot/ft	No. of Shots	Total Interval	
Service Instructions					m		m				m	
					m		m				Diameter	
					m		m				in	
Treat Down		Displacement		Packer Type		Packer Depth						
Casing		224.0 bbl				m						
Tubing Vol.		Casing Vol.		Annular Vol.		Openhole Vol.						
bbl		225.0 bbl		bbl		bbl						
Casing/Tubing Secured		1 Hole Vol. Circulated prior to Cement			Casing Tools			Squeeze Job				
<input checked="" type="checkbox"/>		<input checked="" type="checkbox"/>										
Lift Pressure		Shoe Type			Shoe Depth		Squeeze Type					
1960.0 psi		Float			5894.0 m		Tool Type					
Pipe Rotated		Pipe Reciprocated			Stage Tool Type		Tool Depth		m			
<input type="checkbox"/>		<input type="checkbox"/>					m					
No. Centralizers		Top Plugs	Bottom Plugs		Stage Tool Depth		Tail Pipe Size		in			
		1	1		m		in					
Cement Head Type		Job Scheduled For		Arrived on Location	Leave Location		Collar Type		Tail Pipe Depth		m	
		Sep/25/2017		Sep/25/2017	Sep/25/2017		Float		m			
						Collar Depth		5854.0 m		Sqz. Total Vol.		
										bbl		
Date	Time 24-hr clock	Treating Pressure PSI	Flow Rate B/M	Density LB/G	Volume BBL	Solid Fraction NULL	Message					
09/25/2017	03:15:32	0.3	1.1	0.04	0.0	0	Reset Total, Vol = 0.00 bbl					
09/25/2017	03:16:02	0.3	0.0	0.04	0.0	0						
09/25/2017	03:16:32	0.6	0.0	0.04	0.0	0						
09/25/2017	03:17:02	0.6	0.0	0.04	0.0	0						
09/25/2017	03:17:32	0.3	0.0	0.05	0.0	0						
09/25/2017	03:17:40	0.6	0.0	0.05	0.0	0	Reset Total, Vol = 0.24 bbl					
09/25/2017	03:18:02	0.6	0.0	0.17	0.0	0						
09/25/2017	03:18:32	0.3	0.0	8.32	0.0	0						
09/25/2017	03:19:02	8.9	0.0	8.38	0.0	0						
09/25/2017	03:19:32	5.2	0.0	8.39	0.0	0						
09/25/2017	03:20:02	69.2	2.3	8.38	0.0	0						
09/25/2017	03:20:32	130.5	4.1	8.38	0.0	0						
09/25/2017	03:21:02	125.9	4.1	8.38	0.0	0						
09/25/2017	03:21:32	124.2	4.1	8.38	0.0	0						
09/25/2017	03:22:02	238.6	5.4	8.38	0.0	0						
09/25/2017	03:22:30	24.0	0.0	8.39	0.0	0	Reset Total, Vol = 9.74 bbl					
09/25/2017	03:22:32	22.0	0.0	8.39	0.0	0						
09/25/2017	03:23:02	165.1	4.3	8.41	0.0	0						
09/25/2017	03:23:32	274.7	6.6	8.40	0.0	0						
09/25/2017	03:23:40	24.9	0.1	8.39	0.0	0	Reset Total, Vol = 3.17 bbl					
09/25/2017	03:24:02	11.4	0.0	8.39	0.0	0						

Well			Field		Job Start	Customer		Job Number
NORDEN 2C-14HZ			WATTENBERG		Sep/25/2017	ANADARKO		2585087
Date	Time 24-hr clock	Treating Pressure PSI	Flow Rate B/M	Density LB/G	Volume BBL	Solid Fraction NULL	Message	
09/25/2017	03:25:02	4.0	0.0	8.39	0.0	0		
09/25/2017	03:25:32	3.4	0.0	8.40	0.0	0		
09/25/2017	03:26:32	3.1	0.0	8.40	0.0	0		
09/25/2017	03:27:02	2.3	0.0	8.40	0.0	0		
09/25/2017	03:27:32	3.1	0.0	8.40	0.0	0		
09/25/2017	03:28:02	2.6	0.0	8.40	0.0	0		
09/25/2017	03:28:32	2.0	0.0	8.40	0.0	0		
09/25/2017	03:29:02	2.6	0.0	8.40	0.0	0		
09/25/2017	03:29:32	2.3	0.0	8.40	0.0	0		
09/25/2017	03:30:02	2.0	0.0	8.40	0.0	0		
09/25/2017	03:30:32	2.3	0.0	8.40	0.0	0		
09/25/2017	03:31:02	2.3	0.0	8.40	0.0	0		
09/25/2017	03:31:32	2.3	0.0	8.40	0.0	0		
09/25/2017	03:32:02	2.6	0.0	8.41	0.0	0		
09/25/2017	03:32:32	2.6	0.0	8.41	0.0	0		
09/25/2017	03:33:02	2.3	0.0	8.41	0.0	0		
09/25/2017	03:33:32	2.6	0.0	8.41	0.0	0		
09/25/2017	03:34:02	2.3	0.0	8.41	0.0	0		
09/25/2017	03:34:32	1.7	0.0	8.41	0.0	0		
09/25/2017	03:35:02	2.3	0.0	8.41	0.0	0		
09/25/2017	03:35:32	2.3	0.0	8.41	0.0	0		
09/25/2017	03:36:02	2.9	0.0	8.41	0.0	0		
09/25/2017	03:36:32	2.0	0.0	8.41	0.0	0		
09/25/2017	03:37:02	2.6	0.0	8.41	0.0	0		
09/25/2017	03:37:32	2.6	0.0	8.41	0.0	0		
09/25/2017	03:38:02	2.3	0.0	8.41	0.0	0		
09/25/2017	03:38:32	2.9	0.0	8.41	0.0	0		
09/25/2017	03:39:02	2.9	0.0	8.41	0.0	0		
09/25/2017	03:39:32	2.3	0.0	8.41	0.0	0		
09/25/2017	03:40:02	1.7	0.0	8.42	0.0	0		
09/25/2017	03:40:32	2.6	0.0	8.42	0.0	0		
09/25/2017	03:41:02	2.6	0.0	8.42	0.0	0		
09/25/2017	03:41:32	2.6	0.0	8.42	0.0	0		
09/25/2017	03:42:02	2.0	0.0	8.42	0.0	0		
09/25/2017	03:42:32	2.3	0.0	8.42	0.0	0		
09/25/2017	03:43:02	2.3	0.0	8.42	0.0	0		
09/25/2017	03:43:32	2.6	0.0	8.42	0.0	0		
09/25/2017	03:44:02	2.0	0.0	8.42	0.0	0		
09/25/2017	03:44:32	2.6	0.0	8.42	0.0	0		
09/25/2017	03:45:02	2.3	0.0	8.42	0.0	0		
09/25/2017	03:45:32	2.3	0.0	8.42	0.0	0		
09/25/2017	03:46:02	2.3	0.0	8.42	0.0	0		
09/25/2017	03:46:32	2.3	0.0	8.42	0.0	0		
09/25/2017	03:47:02	2.3	0.0	8.42	0.0	0		
09/25/2017	03:47:32	2.3	0.0	8.42	0.0	0		
09/25/2017	03:48:02	2.3	0.0	8.42	0.0	0		
09/25/2017	03:48:32	2.6	0.0	8.42	0.0	0		
09/25/2017	03:49:02	2.6	0.0	8.43	0.0	0		
09/25/2017	03:49:32	2.6	0.0	8.42	0.0	0		
09/25/2017	03:50:02	2.6	0.0	8.43	0.0	0		
09/25/2017	03:50:32	2.9	0.0	8.43	0.0	0		
09/25/2017	03:51:02	2.6	0.0	8.43	0.0	0		
09/25/2017	03:51:32	3.1	0.0	8.43	0.0	0		
09/25/2017	03:52:02	2.9	0.0	8.43	0.0	0		

Well			Field		Job Start	Customer		Job Number
NORDEN 2C-14HZ			WATTENBERG		Sep/25/2017	ANADARKO		2585087
Date	Time 24-hr clock	Treating Pressure PSI	Flow Rate B/M	Density LB/G	Volume BBL	Solid Fraction NULL	Message	
09/25/2017	03:53:02	2.9	0.0	8.43	0.0	0		
09/25/2017	03:53:32	2.9	0.0	8.43	0.0	0		
09/25/2017	03:54:02	2.3	0.0	8.43	0.0	0		
09/25/2017	03:54:32	2.6	0.0	8.43	0.0	0		
09/25/2017	03:55:02	2.3	0.0	8.43	0.0	0		
09/25/2017	03:55:32	2.3	0.0	8.43	0.0	0		
09/25/2017	03:56:02	2.0	0.0	8.43	0.0	0		
09/25/2017	03:56:32	2.6	0.0	8.43	0.0	0		
09/25/2017	03:57:02	2.6	0.0	8.43	0.0	0		
09/25/2017	03:57:32	2.9	0.0	8.43	0.0	0		
09/25/2017	03:58:02	2.6	0.0	8.43	0.0	0		
09/25/2017	03:58:32	2.6	0.0	8.43	0.0	0		
09/25/2017	03:59:02	2.9	0.0	8.43	0.0	0		
09/25/2017	03:59:32	2.3	0.0	8.43	0.0	0		
09/25/2017	04:00:02	2.6	0.0	8.43	0.0	0		
09/25/2017	04:00:32	2.9	0.0	8.43	0.0	0		
09/25/2017	04:01:02	2.6	0.0	8.43	0.0	0		
09/25/2017	04:01:32	2.6	0.0	8.43	0.0	0		
09/25/2017	04:02:02	2.9	0.0	8.43	0.0	0		
09/25/2017	04:02:32	2.6	0.0	8.43	0.0	0		
09/25/2017	04:03:02	2.0	0.0	8.43	0.0	0		
09/25/2017	04:03:32	2.0	0.0	8.43	0.0	0		
09/25/2017	04:04:02	2.0	0.0	8.43	0.0	0		
09/25/2017	04:04:32	2.0	0.0	8.43	0.0	0		
09/25/2017	04:05:02	2.6	0.0	8.43	0.0	0		
09/25/2017	04:05:32	2.0	0.0	8.43	0.0	0		
09/25/2017	04:06:02	2.6	0.0	8.43	0.0	0		
09/25/2017	04:06:32	2.0	0.0	8.43	0.0	0		
09/25/2017	04:07:02	2.9	0.0	8.43	0.0	0		
09/25/2017	04:07:32	2.3	0.0	8.44	0.0	0		
09/25/2017	04:08:02	2.3	0.0	8.43	0.0	0		
09/25/2017	04:08:32	2.9	0.0	8.43	0.0	0		
09/25/2017	04:09:02	2.6	0.0	8.43	0.0	0		
09/25/2017	04:09:32	2.9	0.0	8.44	0.0	0		
09/25/2017	04:10:02	2.0	0.0	8.44	0.0	0		
09/25/2017	04:10:32	2.6	0.0	8.44	0.0	0		
09/25/2017	04:11:02	2.6	0.0	8.44	0.0	0		
09/25/2017	04:11:32	2.3	0.0	8.44	0.0	0		
09/25/2017	04:12:02	2.3	0.0	8.44	0.0	0		
09/25/2017	04:12:32	2.6	0.0	8.44	0.0	0		
09/25/2017	04:13:02	2.0	0.0	8.44	0.0	0		
09/25/2017	04:13:32	2.0	0.0	8.44	0.0	0		
09/25/2017	04:14:02	2.0	0.0	8.44	0.0	0		
09/25/2017	04:14:32	2.0	0.0	8.44	0.0	0		
09/25/2017	04:15:02	2.3	0.0	8.44	0.0	0		
09/25/2017	04:15:32	2.3	0.0	8.44	0.0	0		
09/25/2017	04:16:02	2.3	0.0	8.44	0.0	0		
09/25/2017	04:16:32	2.3	0.0	8.44	0.0	0		
09/25/2017	04:17:02	1.7	0.0	8.44	0.0	0		
09/25/2017	04:17:32	1.7	0.0	8.44	0.0	0		
09/25/2017	04:18:02	2.0	0.0	8.44	0.0	0		
09/25/2017	04:18:32	2.3	0.0	8.44	0.0	0		
09/25/2017	04:19:02	2.0	0.0	8.44	0.0	0		
09/25/2017	04:19:32	2.9	0.0	8.44	0.0	0		

Well			Field		Job Start	Customer		Job Number
NORDEN 2C-14HZ			WATTENBERG		Sep/25/2017	ANADARKO		2585087
Date	Time 24-hr clock	Treating Pressure PSI	Flow Rate B/M	Density LB/G	Volume BBL	Solid Fraction NULL	Message	
09/25/2017	04:20:32	2.6	0.0	8.44	0.0	0		
09/25/2017	04:21:02	2.0	0.0	8.44	0.0	0		
09/25/2017	04:21:32	2.3	0.0	8.44	0.0	0		
09/25/2017	04:22:02	2.0	0.0	8.44	0.0	0		
09/25/2017	04:22:32	2.6	0.0	8.44	0.0	0		
09/25/2017	04:23:02	2.0	0.0	8.44	0.0	0		
09/25/2017	04:23:32	2.0	0.0	8.44	0.0	0		
09/25/2017	04:24:02	2.3	0.0	8.44	0.0	0		
09/25/2017	04:24:32	2.0	0.0	8.44	0.0	0		
09/25/2017	04:25:02	2.0	0.0	8.44	0.0	0		
09/25/2017	04:25:32	2.6	0.0	8.44	0.0	0		
09/25/2017	04:26:02	2.0	0.0	8.44	0.0	0		
09/25/2017	04:26:32	2.0	0.0	8.44	0.0	0		
09/25/2017	04:27:02	2.3	0.0	8.44	0.0	0		
09/25/2017	04:27:32	2.3	0.0	8.44	0.0	0		
09/25/2017	04:28:02	2.9	0.0	8.44	0.0	0		
09/25/2017	04:28:32	2.3	0.0	8.44	0.0	0		
09/25/2017	04:29:02	2.6	0.0	8.44	0.0	0		
09/25/2017	04:29:32	2.3	0.0	8.44	0.0	0		
09/25/2017	04:30:02	2.6	0.0	8.44	0.0	0		
09/25/2017	04:30:32	2.3	0.0	8.44	0.0	0		
09/25/2017	04:31:02	2.3	0.0	8.44	0.0	0		
09/25/2017	04:31:32	1.7	0.0	8.44	0.0	0		
09/25/2017	04:32:02	2.3	0.0	8.44	0.0	0		
09/25/2017	04:32:32	2.6	0.0	8.44	0.0	0		
09/25/2017	04:33:02	2.0	0.0	8.44	0.0	0		
09/25/2017	04:33:32	2.6	0.0	8.44	0.0	0		
09/25/2017	04:34:02	1.7	0.0	8.44	0.0	0		
09/25/2017	04:34:32	2.6	0.0	8.44	0.0	0		
09/25/2017	04:35:02	2.6	0.0	8.44	0.0	0		
09/25/2017	04:35:32	2.3	0.0	8.44	0.0	0		
09/25/2017	04:36:02	2.3	0.0	8.44	0.0	0		
09/25/2017	04:36:32	2.3	0.0	8.44	0.0	0		
09/25/2017	04:37:02	2.9	0.0	8.44	0.0	0		
09/25/2017	04:37:32	2.9	0.0	8.44	0.0	0		
09/25/2017	04:38:02	2.3	0.0	8.44	0.0	0		
09/25/2017	04:38:32	2.3	0.0	8.44	0.0	0		
09/25/2017	04:39:02	2.3	0.0	8.44	0.0	0		
09/25/2017	04:39:32	2.0	0.0	8.44	0.0	0		
09/25/2017	04:40:02	2.6	0.0	8.44	0.0	0		
09/25/2017	04:40:32	2.6	0.0	8.44	0.0	0		
09/25/2017	04:41:02	2.0	0.0	8.44	0.0	0		
09/25/2017	04:41:32	2.0	0.0	8.44	0.0	0		
09/25/2017	04:42:02	2.6	0.0	8.44	0.0	0		
09/25/2017	04:42:32	2.3	0.0	8.44	0.0	0		
09/25/2017	04:43:02	2.0	0.0	8.44	0.0	0		
09/25/2017	04:43:32	2.6	0.0	8.44	0.0	0		
09/25/2017	04:44:02	2.0	0.0	8.44	0.0	0		
09/25/2017	04:44:32	2.6	0.0	8.44	0.0	0		
09/25/2017	04:45:02	2.6	0.0	8.44	0.0	0		
09/25/2017	04:45:32	2.0	0.0	8.44	0.0	0		
09/25/2017	04:46:02	2.3	0.0	8.44	0.0	0		
09/25/2017	04:46:32	2.3	0.0	8.44	0.0	0		
09/25/2017	04:47:02	1.7	0.0	8.44	0.0	0		

Well			Field		Job Start	Customer		Job Number
NORDEN 2C-14HZ			WATTENBERG		Sep/25/2017	ANADARKO		2585087
Date	Time 24-hr clock	Treating Pressure PSI	Flow Rate B/M	Density LB/G	Volume BBL	Solid Fraction NULL	Message	
09/25/2017	04:48:02	2.0	0.0	8.44	0.0	0		
09/25/2017	04:48:32	2.3	0.0	8.44	0.0	0		
09/25/2017	04:49:02	2.0	0.0	8.44	0.0	0		
09/25/2017	04:49:32	2.6	0.0	8.44	0.0	0		
09/25/2017	04:50:02	2.3	0.0	8.44	0.0	0		
09/25/2017	04:50:32	2.3	0.0	8.44	0.0	0		
09/25/2017	04:51:02	2.3	0.0	8.44	0.0	0		
09/25/2017	04:51:32	2.3	0.0	8.44	0.0	0		
09/25/2017	04:52:02	2.3	0.0	8.44	0.0	0		
09/25/2017	04:52:32	2.3	0.0	8.44	0.0	0		
09/25/2017	04:53:02	2.3	0.0	8.44	0.0	0		
09/25/2017	04:53:32	1.7	0.0	8.44	0.0	0		
09/25/2017	04:54:02	1.7	0.0	8.44	0.0	0		
09/25/2017	04:54:32	2.6	0.0	8.44	0.0	0		
09/25/2017	04:55:02	2.3	0.0	8.45	0.0	0		
09/25/2017	04:55:32	2.0	0.0	8.45	0.0	0		
09/25/2017	04:56:02	2.3	0.0	8.44	0.0	0		
09/25/2017	04:56:32	2.6	0.0	8.44	0.0	0		
09/25/2017	04:57:02	2.0	0.0	8.44	0.0	0		
09/25/2017	04:57:32	2.0	0.0	8.44	0.0	0		
09/25/2017	04:58:02	2.0	0.0	8.45	0.0	0		
09/25/2017	04:58:32	1.7	0.0	8.45	0.0	0		
09/25/2017	04:59:02	2.3	0.0	8.45	0.0	0		
09/25/2017	04:59:32	2.3	0.0	8.45	0.0	0		
09/25/2017	05:00:02	2.0	0.0	8.45	0.0	0		
09/25/2017	05:00:32	1.4	0.0	8.45	0.0	0		
09/25/2017	05:01:02	2.3	0.0	8.44	0.0	0		
09/25/2017	05:01:32	2.3	0.0	8.45	0.0	0		
09/25/2017	05:02:02	2.3	0.0	8.45	0.0	0		
09/25/2017	05:02:32	1.7	0.0	8.45	0.0	0		
09/25/2017	05:03:02	2.0	0.0	8.44	0.0	0		
09/25/2017	05:03:32	1.7	0.0	8.44	0.0	0		
09/25/2017	05:04:02	2.6	0.0	8.44	0.0	0		
09/25/2017	05:04:32	2.3	0.0	8.45	0.0	0		
09/25/2017	05:05:02	2.9	0.0	8.45	0.0	0		
09/25/2017	05:05:32	2.6	0.0	8.44	0.0	0		
09/25/2017	05:06:02	2.3	0.0	8.45	0.0	0		
09/25/2017	05:06:32	2.6	0.0	8.44	0.0	0		
09/25/2017	05:07:02	2.0	0.0	8.44	0.0	0		
09/25/2017	05:07:32	2.0	0.0	8.45	0.0	0		
09/25/2017	05:08:02	2.6	0.0	8.44	0.0	0		
09/25/2017	05:08:32	2.0	0.0	8.45	0.0	0		
09/25/2017	05:09:02	1.7	0.0	8.45	0.0	0		
09/25/2017	05:09:32	2.0	0.0	8.45	0.0	0		
09/25/2017	05:10:02	2.0	0.0	8.45	0.0	0		
09/25/2017	05:10:32	2.6	0.0	8.45	0.0	0		
09/25/2017	05:11:02	2.3	0.0	8.44	0.0	0		
09/25/2017	05:11:32	2.3	0.0	8.44	0.0	0		
09/25/2017	05:12:02	2.6	0.0	8.45	0.0	0		
09/25/2017	05:12:32	2.6	0.0	8.45	0.0	0		
09/25/2017	05:13:02	2.3	0.0	8.44	0.0	0		
09/25/2017	05:13:32	2.0	0.0	8.45	0.0	0		
09/25/2017	05:14:02	2.6	0.0	8.45	0.0	0		
09/25/2017	05:14:32	2.6	0.0	8.45	0.0	0		

Well			Field		Job Start	Customer		Job Number
NORDEN 2C-14HZ			WATTENBERG		Sep/25/2017	ANADARKO		2585087
Date	Time 24-hr clock	Treating Pressure PSI	Flow Rate B/M	Density LB/G	Volume BBL	Solid Fraction NULL	Message	
09/25/2017	05:15:32	1.7	0.0	8.45	0.0	0		
09/25/2017	05:16:02	2.6	0.0	8.45	0.0	0		
09/25/2017	05:16:32	2.6	0.0	8.45	0.0	0		
09/25/2017	05:17:02	2.0	0.0	8.45	0.0	0		
09/25/2017	05:17:32	2.6	0.0	8.44	0.0	0		
09/25/2017	05:18:02	1.7	0.0	8.44	0.0	0		
09/25/2017	05:18:32	2.6	0.0	8.44	0.0	0		
09/25/2017	05:19:02	2.0	0.0	8.45	0.0	0		
09/25/2017	05:19:32	1.7	0.0	8.44	0.0	0		
09/25/2017	05:20:02	2.0	0.0	8.44	0.0	0		
09/25/2017	05:20:32	1.7	0.0	8.44	0.0	0		
09/25/2017	05:21:02	2.6	0.0	8.44	0.0	0		
09/25/2017	05:21:32	2.3	0.0	8.44	0.0	0		
09/25/2017	05:22:02	2.3	0.0	8.44	0.0	0		
09/25/2017	05:22:32	2.0	0.0	8.45	0.0	0		
09/25/2017	05:23:02	2.3	0.0	8.44	0.0	0		
09/25/2017	05:23:32	2.3	0.0	8.44	0.0	0		
09/25/2017	05:24:02	2.3	0.0	8.44	0.0	0		
09/25/2017	05:24:32	2.6	0.0	8.44	0.0	0		
09/25/2017	05:25:02	2.3	0.0	8.44	0.0	0		
09/25/2017	05:25:32	2.0	0.0	8.44	0.0	0		
09/25/2017	05:26:02	2.3	0.0	8.44	0.0	0		
09/25/2017	05:26:32	2.0	0.0	8.44	0.0	0		
09/25/2017	05:27:02	2.0	0.0	8.44	0.0	0		
09/25/2017	05:27:32	2.6	0.0	8.44	0.0	0		
09/25/2017	05:28:02	2.3	0.0	8.45	0.0	0		
09/25/2017	05:28:32	2.3	0.0	8.45	0.0	0		
09/25/2017	05:29:02	2.0	0.0	8.44	0.0	0		
09/25/2017	05:29:32	2.3	0.0	8.44	0.0	0		
09/25/2017	05:30:02	2.0	0.0	8.44	0.0	0		
09/25/2017	05:30:32	2.6	0.0	8.44	0.0	0		
09/25/2017	05:31:02	2.0	0.0	8.44	0.0	0		
09/25/2017	05:31:32	2.6	0.0	8.44	0.0	0		
09/25/2017	05:32:02	2.0	0.0	8.44	0.0	0		
09/25/2017	05:32:32	2.3	0.0	8.44	0.0	0		
09/25/2017	05:33:02	2.9	0.0	8.44	0.0	0		
09/25/2017	05:34:02	2.3	0.0	8.44	0.0	0		
09/25/2017	05:34:32	2.0	0.0	8.44	0.0	0		
09/25/2017	05:35:02	2.0	0.0	8.44	0.0	0		
09/25/2017	05:35:32	2.6	0.0	8.44	0.0	0		
09/25/2017	05:36:02	2.0	0.0	8.44	0.0	0		
09/25/2017	05:36:32	1.4	0.0	8.44	0.0	0		
09/25/2017	05:37:02	2.3	0.0	8.44	0.0	0		
09/25/2017	05:37:32	1.7	0.0	8.44	0.0	0		
09/25/2017	05:38:02	2.3	0.0	8.44	0.0	0		
09/25/2017	05:38:32	2.3	0.0	8.44	0.0	0		
09/25/2017	05:39:02	2.3	0.0	8.44	0.0	0		
09/25/2017	05:39:32	2.6	0.0	8.44	0.0	0		
09/25/2017	05:40:02	2.3	0.0	8.44	0.0	0		
09/25/2017	05:40:32	2.3	0.0	8.44	0.0	0		
09/25/2017	05:41:02	2.6	0.0	8.44	0.0	0		
09/25/2017	05:41:32	2.3	0.0	8.44	0.0	0		
09/25/2017	05:42:02	2.6	0.0	8.44	0.0	0		
09/25/2017	05:42:32	2.0	0.0	8.44	0.0	0		

Well			Field		Job Start	Customer		Job Number
NORDEN 2C-14HZ			WATTENBERG		Sep/25/2017	ANADARKO		2585087
Date	Time 24-hr clock	Treating Pressure PSI	Flow Rate B/M	Density LB/G	Volume BBL	Solid Fraction NULL	Message	
09/25/2017	05:43:32	2.3	0.0	8.44	0.0	0		
09/25/2017	05:44:02	2.3	0.0	8.44	0.0	0		
09/25/2017	05:44:32	1.4	0.0	8.44	0.0	0		
09/25/2017	05:45:02	2.0	0.0	8.44	0.0	0		
09/25/2017	05:45:32	2.0	0.0	8.44	0.0	0		
09/25/2017	05:46:02	2.0	0.0	8.44	0.0	0		
09/25/2017	05:46:32	2.0	0.0	8.44	0.0	0		
09/25/2017	05:47:02	1.7	0.0	8.44	0.0	0		
09/25/2017	05:47:32	2.3	0.0	8.44	0.0	0		
09/25/2017	05:48:02	1.7	0.0	8.44	0.0	0		
09/25/2017	05:48:32	2.0	0.0	8.44	0.0	0		
09/25/2017	05:49:02	2.3	0.0	8.44	0.0	0		
09/25/2017	05:49:32	2.3	0.0	8.44	0.0	0		
09/25/2017	05:50:02	2.0	0.0	8.44	0.0	0		
09/25/2017	05:50:32	2.3	0.0	8.44	0.0	0		
09/25/2017	05:51:02	2.0	0.0	8.44	0.0	0		
09/25/2017	05:51:32	2.3	0.0	8.44	0.0	0		
09/25/2017	05:52:02	1.7	0.0	8.44	0.0	0		
09/25/2017	05:52:32	1.7	0.0	8.44	0.0	0		
09/25/2017	05:53:02	1.7	0.0	8.44	0.0	0		
09/25/2017	05:53:32	2.0	0.0	8.44	0.0	0		
09/25/2017	05:54:02	2.0	0.0	8.44	0.0	0		
09/25/2017	05:54:32	2.6	0.0	8.44	0.0	0		
09/25/2017	05:55:02	2.0	0.0	8.44	0.0	0		
09/25/2017	05:55:32	2.0	0.0	8.44	0.0	0		
09/25/2017	05:56:02	2.6	0.0	8.44	0.0	0		
09/25/2017	05:56:32	1.7	0.0	8.44	0.0	0		
09/25/2017	05:57:02	2.3	0.0	8.44	0.0	0		
09/25/2017	05:57:32	1.7	0.0	8.44	0.0	0		
09/25/2017	05:58:02	1.7	0.0	8.44	0.0	0		
09/25/2017	05:58:32	2.9	0.0	8.44	0.0	0		
09/25/2017	05:59:02	1.7	0.0	8.44	0.0	0		
09/25/2017	05:59:32	2.0	0.0	8.44	0.0	0		
09/25/2017	06:00:02	2.0	0.0	8.44	0.0	0		
09/25/2017	06:00:32	2.3	0.0	8.43	0.0	0		
09/25/2017	06:01:02	1.4	0.0	8.43	0.0	0		
09/25/2017	06:01:32	1.7	0.0	8.43	0.0	0		
09/25/2017	06:02:02	1.7	0.0	8.44	0.0	0		
09/25/2017	06:02:32	2.3	0.0	8.43	0.0	0		
09/25/2017	06:03:02	2.3	0.0	8.44	0.0	0		
09/25/2017	06:03:32	1.7	0.0	8.43	0.0	0		
09/25/2017	06:04:02	2.0	0.0	8.43	0.0	0		
09/25/2017	06:04:32	2.3	0.0	8.43	0.0	0		
09/25/2017	06:05:02	2.3	0.0	8.43	0.0	0		
09/25/2017	06:05:32	2.0	0.0	8.43	0.0	0		
09/25/2017	06:06:02	2.0	0.0	8.43	0.0	0		
09/25/2017	06:06:32	1.4	0.0	8.43	0.0	0		
09/25/2017	06:07:02	2.6	0.0	8.43	0.0	0		
09/25/2017	06:07:32	2.3	0.0	8.43	0.0	0		
09/25/2017	06:08:02	2.3	0.0	8.43	0.0	0		
09/25/2017	06:08:32	1.7	0.0	8.43	0.0	0		
09/25/2017	06:09:02	1.7	0.0	8.43	0.0	0		
09/25/2017	06:09:32	2.3	0.0	8.43	0.0	0		
09/25/2017	06:10:02	2.3	0.0	8.43	0.0	0		

Well NORDEN 2C-14HZ			Field WATTENBERG		Job Start Sep/25/2017	Customer ANADARKO		Job Number 2585087
Date	Time 24-hr clock	Treating Pressure PSI	Flow Rate B/M	Density LB/G	Volume BBL	Solid Fraction NULL	Message	
09/25/2017	06:11:02	2.3	0.0	8.43	0.0	0		
09/25/2017	06:11:32	2.3	0.0	8.43	0.0	0		
09/25/2017	06:12:02	2.0	0.0	8.43	0.0	0		
09/25/2017	06:12:32	2.0	0.0	8.43	0.0	0		
09/25/2017	06:13:02	2.3	0.0	8.43	0.0	0		
09/25/2017	06:13:32	1.7	0.0	8.43	0.0	0		
09/25/2017	06:14:02	2.0	0.0	8.43	0.0	0		
09/25/2017	06:14:32	2.6	0.0	8.43	0.0	0		
09/25/2017	06:15:02	2.3	0.0	8.43	0.0	0		
09/25/2017	06:15:32	2.3	0.0	8.43	0.0	0		
09/25/2017	06:16:02	2.0	0.0	8.43	0.0	0		
09/25/2017	06:16:32	2.3	0.0	8.43	0.0	0		
09/25/2017	06:17:02	2.0	0.0	8.43	0.0	0		
09/25/2017	06:17:32	2.0	0.0	8.43	0.0	0		
09/25/2017	06:18:02	1.4	0.0	8.43	0.0	0		
09/25/2017	06:18:32	2.0	0.0	8.43	0.0	0		
09/25/2017	06:19:02	2.3	0.0	8.43	0.0	0		
09/25/2017	06:19:32	2.6	0.0	8.43	0.0	0		
09/25/2017	06:20:02	2.3	0.0	8.43	0.0	0		
09/25/2017	06:20:32	2.0	0.0	8.43	0.0	0		
09/25/2017	06:21:02	2.0	0.0	8.43	0.0	0		
09/25/2017	06:21:32	2.3	0.0	8.43	0.0	0		
09/25/2017	06:22:02	1.4	0.0	8.43	0.0	0		
09/25/2017	06:22:32	1.7	0.0	8.43	0.0	0		
09/25/2017	06:23:02	2.3	0.0	8.43	0.0	0		
09/25/2017	06:23:32	1.7	0.0	8.43	0.0	0		
09/25/2017	06:24:02	2.0	0.0	8.42	0.0	0		
09/25/2017	06:24:32	2.0	0.0	8.43	0.0	0		
09/25/2017	06:25:02	2.0	0.0	8.43	0.0	0		
09/25/2017	06:25:32	2.0	0.0	8.43	0.0	0		
09/25/2017	06:26:02	1.1	0.0	8.42	0.0	0		
09/25/2017	06:26:32	2.6	0.0	8.42	0.0	0		
09/25/2017	06:27:02	1.7	0.0	8.42	0.0	0		
09/25/2017	06:27:32	2.0	0.0	8.42	0.0	0		
09/25/2017	06:28:02	2.0	0.0	8.42	0.0	0		
09/25/2017	06:28:32	1.4	0.0	8.42	0.0	0		
09/25/2017	06:29:02	2.0	0.0	8.42	0.0	0		
09/25/2017	06:29:32	2.3	0.0	8.42	0.0	0		
09/25/2017	06:30:02	2.3	0.0	8.42	0.0	0		
09/25/2017	06:30:32	2.3	0.0	8.42	0.0	0		
09/25/2017	06:31:02	1.7	0.0	8.42	0.0	0		
09/25/2017	06:31:32	2.0	0.0	8.42	0.0	0		
09/25/2017	06:32:02	2.0	0.0	8.42	0.0	0		
09/25/2017	06:32:32	2.0	0.0	8.42	0.0	0		
09/25/2017	06:33:02	2.0	0.0	8.42	0.0	0		
09/25/2017	06:33:32	2.0	0.0	8.42	0.0	0		
09/25/2017	06:34:02	2.3	0.0	8.42	0.0	0		
09/25/2017	06:34:32	1.7	0.0	8.42	0.0	0		
09/25/2017	06:35:02	1.7	0.0	8.42	0.0	0		
09/25/2017	06:35:32	2.6	0.0	8.42	0.0	0		
09/25/2017	06:36:02	2.3	0.0	8.42	0.0	0		
09/25/2017	06:36:32	2.0	0.0	8.42	0.0	0		
09/25/2017	06:37:02	1.4	0.0	8.42	0.0	0		
09/25/2017	06:37:32	2.0	0.0	8.42	0.0	0		

Well NORDEN 2C-14HZ			Field WATTENBERG		Job Start Sep/25/2017	Customer ANADARKO		Job Number 2585087
Date	Time 24-hr clock	Treating Pressure PSI	Flow Rate B/M	Density LB/G	Volume BBL	Solid Fraction NULL	Message	
09/25/2017	06:38:32	2.3	0.0	8.42	0.0	0		
09/25/2017	06:39:02	2.0	0.0	8.42	0.0	0		
09/25/2017	06:39:32	2.0	0.0	8.42	0.0	0		
09/25/2017	06:40:02	2.0	0.0	8.42	0.0	0		
09/25/2017	06:40:32	1.7	0.0	8.42	0.0	0		
09/25/2017	06:41:02	2.0	0.0	8.42	0.0	0		
09/25/2017	06:41:32	1.7	0.0	8.42	0.0	0		
09/25/2017	06:42:02	2.3	0.0	8.42	0.0	0		
09/25/2017	06:42:32	2.0	0.0	8.42	0.0	0		
09/25/2017	06:43:02	2.6	0.0	8.42	0.0	0		
09/25/2017	06:43:32	1.7	0.0	8.42	0.0	0		
09/25/2017	06:44:02	1.7	0.0	8.42	0.0	0		
09/25/2017	06:44:32	1.4	0.0	8.42	0.0	0		
09/25/2017	06:45:02	1.7	0.0	8.42	0.0	0		
09/25/2017	06:45:32	1.7	0.0	8.42	0.0	0		
09/25/2017	06:46:02	2.3	0.0	8.42	0.0	0		
09/25/2017	06:46:32	2.0	0.0	8.42	0.0	0		
09/25/2017	06:47:02	2.3	0.0	8.42	0.0	0		
09/25/2017	06:47:32	1.7	0.0	8.42	0.0	0		
09/25/2017	06:48:02	2.3	0.0	8.42	0.0	0		
09/25/2017	06:48:32	2.0	0.0	8.42	0.0	0		
09/25/2017	06:49:02	1.7	0.0	8.42	0.0	0		
09/25/2017	06:49:32	1.7	0.0	8.42	0.0	0		
09/25/2017	06:50:02	2.0	0.0	8.42	0.0	0		
09/25/2017	06:50:32	2.3	0.0	8.42	0.0	0		
09/25/2017	06:51:02	1.7	0.0	8.42	0.0	0		
09/25/2017	06:51:32	2.0	0.0	8.42	0.0	0		
09/25/2017	06:52:02	1.7	0.0	8.42	0.0	0		
09/25/2017	06:52:32	1.7	0.0	8.42	0.0	0		
09/25/2017	06:53:02	2.0	0.0	8.42	0.0	0		
09/25/2017	06:53:32	2.3	0.0	8.42	0.0	0		
09/25/2017	06:54:02	1.4	0.0	8.42	0.0	0		
09/25/2017	06:54:32	2.3	0.0	8.42	0.0	0		
09/25/2017	06:55:02	1.7	0.0	8.42	0.0	0		
09/25/2017	06:55:32	2.3	0.0	8.42	0.0	0		
09/25/2017	06:56:02	1.7	0.0	8.42	0.0	0		
09/25/2017	06:56:32	2.0	0.0	8.42	0.0	0		
09/25/2017	06:57:02	1.7	0.0	8.42	0.0	0		
09/25/2017	06:57:32	2.0	0.0	8.42	0.0	0		
09/25/2017	06:58:02	1.4	0.0	8.42	0.0	0		
09/25/2017	06:58:32	2.3	0.0	8.42	0.0	0		
09/25/2017	06:59:02	2.3	0.0	8.42	0.0	0		
09/25/2017	06:59:32	1.7	0.0	8.42	0.0	0		
09/25/2017	07:00:02	1.1	0.0	8.41	0.0	0		
09/25/2017	07:00:32	1.7	0.0	8.42	0.0	0		
09/25/2017	07:01:02	2.6	0.0	8.42	0.0	0		
09/25/2017	07:01:32	2.0	0.0	8.41	0.0	0		
09/25/2017	07:02:02	2.0	0.0	8.42	0.0	0		
09/25/2017	07:02:32	2.0	0.0	8.42	0.0	0		
09/25/2017	07:03:02	2.0	0.0	8.42	0.0	0		
09/25/2017	07:03:32	2.0	0.0	8.42	0.0	0		
09/25/2017	07:04:02	2.0	0.0	8.41	0.0	0		
09/25/2017	07:04:32	2.0	0.0	8.41	0.0	0		
09/25/2017	07:05:02	2.0	0.0	8.42	0.0	0		

Well			Field		Job Start	Customer		Job Number
NORDEN 2C-14HZ			WATTENBERG		Sep/25/2017	ANADARKO		2585087
Date	Time 24-hr clock	Treating Pressure PSI	Flow Rate B/M	Density LB/G	Volume BBL	Solid Fraction NULL	Message	
09/25/2017	07:06:02	2.3	0.0	8.42	0.0	0		
09/25/2017	07:06:32	1.4	0.0	8.41	0.0	0		
09/25/2017	07:07:02	2.0	0.0	8.42	0.0	0		
09/25/2017	07:07:32	1.7	0.0	8.41	0.0	0		
09/25/2017	07:08:02	2.6	0.0	8.41	0.0	0		
09/25/2017	07:08:32	2.3	0.0	8.41	0.0	0		
09/25/2017	07:09:02	2.0	0.0	8.41	0.0	0		
09/25/2017	07:09:32	2.3	0.0	8.41	0.0	0		
09/25/2017	07:10:02	2.3	0.0	8.41	0.0	0		
09/25/2017	07:10:32	2.3	0.0	8.42	0.0	0		
09/25/2017	07:11:02	2.0	0.0	8.41	0.0	0		
09/25/2017	07:11:32	2.3	0.0	8.41	0.0	0		
09/25/2017	07:12:02	2.3	0.0	8.41	0.0	0		
09/25/2017	07:12:32	2.0	0.0	8.41	0.0	0		
09/25/2017	07:13:02	2.0	0.0	8.41	0.0	0		
09/25/2017	07:13:32	1.1	0.0	8.41	0.0	0		
09/25/2017	07:14:02	2.3	0.0	8.41	0.0	0		
09/25/2017	07:14:32	1.7	0.0	8.41	0.0	0		
09/25/2017	07:15:02	2.0	0.0	8.41	0.0	0		
09/25/2017	07:15:32	2.3	0.0	8.41	0.0	0		
09/25/2017	07:16:02	1.4	0.0	8.41	0.0	0		
09/25/2017	07:16:32	2.0	0.0	8.41	0.0	0		
09/25/2017	07:17:02	2.0	0.0	8.41	0.0	0		
09/25/2017	07:17:32	2.0	0.0	8.41	0.0	0		
09/25/2017	07:18:02	2.3	0.0	8.41	0.0	0		
09/25/2017	07:18:32	2.0	0.0	8.41	0.0	0		
09/25/2017	07:19:02	1.7	0.0	8.41	0.0	0		
09/25/2017	07:19:32	2.3	0.0	8.41	0.0	0		
09/25/2017	07:20:02	2.0	0.0	8.41	0.0	0		
09/25/2017	07:20:32	2.6	0.0	8.41	0.0	0		
09/25/2017	07:21:02	2.0	0.0	8.41	0.0	0		
09/25/2017	07:21:32	1.4	0.0	8.41	0.0	0		
09/25/2017	07:22:02	2.3	0.0	8.41	0.0	0		
09/25/2017	07:22:32	2.0	0.0	8.41	0.0	0		
09/25/2017	07:23:02	2.0	0.0	8.41	0.0	0		
09/25/2017	07:23:32	2.0	0.0	8.41	0.0	0		
09/25/2017	07:24:02	1.4	0.0	8.41	0.0	0		
09/25/2017	07:24:32	2.3	0.0	8.41	0.0	0		
09/25/2017	07:25:02	2.6	0.0	8.41	0.0	0		
09/25/2017	07:25:32	2.0	0.0	8.41	0.0	0		
09/25/2017	07:26:02	1.4	0.0	8.41	0.0	0		
09/25/2017	07:26:32	2.0	0.0	8.41	0.0	0		
09/25/2017	07:27:02	2.0	0.0	8.41	0.0	0		
09/25/2017	07:27:32	1.4	0.0	8.41	0.0	0		
09/25/2017	07:28:02	1.7	0.0	8.41	0.0	0		
09/25/2017	07:28:32	1.4	0.0	8.41	0.0	0		
09/25/2017	07:29:02	1.7	0.0	8.41	0.0	0		
09/25/2017	07:29:32	1.7	0.0	8.41	0.0	0		
09/25/2017	07:30:02	2.0	0.0	8.41	0.0	0		
09/25/2017	07:30:32	2.0	0.0	8.41	0.0	0		
09/25/2017	07:31:02	1.7	0.0	8.41	0.0	0		
09/25/2017	07:31:32	2.3	0.0	8.41	0.0	0		
09/25/2017	07:32:02	1.7	0.0	8.41	0.0	0		
09/25/2017	07:32:32	2.0	0.0	8.41	0.0	0		

Well			Field		Job Start	Customer		Job Number
NORDEN 2C-14HZ			WATTENBERG		Sep/25/2017	ANADARKO		2585087
Date	Time 24-hr clock	Treating Pressure PSI	Flow Rate B/M	Density LB/G	Volume BBL	Solid Fraction NULL	Message	
09/25/2017	07:33:32	2.0	0.0	8.41	0.0	0		
09/25/2017	07:34:02	2.0	0.0	8.41	0.0	0		
09/25/2017	07:34:32	1.7	0.0	8.41	0.0	0		
09/25/2017	07:35:02	1.1	0.0	8.41	0.0	0		
09/25/2017	07:35:32	2.3	0.0	8.41	0.0	0		
09/25/2017	07:36:02	1.4	0.0	8.41	0.0	0		
09/25/2017	07:36:32	2.3	0.0	8.41	0.0	0		
09/25/2017	07:37:02	1.7	0.0	8.41	0.0	0		
09/25/2017	07:37:32	2.0	0.0	8.41	0.0	0		
09/25/2017	07:38:02	2.0	0.0	8.41	0.0	0		
09/25/2017	07:38:32	2.0	0.0	8.41	0.0	0		
09/25/2017	07:39:02	2.0	0.0	8.41	0.0	0		
09/25/2017	07:39:32	2.0	0.0	8.41	0.0	0		
09/25/2017	07:40:02	1.4	0.0	8.41	0.0	0		
09/25/2017	07:40:32	1.7	0.0	8.41	0.0	0		
09/25/2017	07:41:32	1.7	0.0	8.41	0.0	0		
09/25/2017	07:42:02	1.7	0.0	8.41	0.0	0		
09/25/2017	07:42:32	1.7	0.0	8.41	0.0	0		
09/25/2017	07:43:02	1.7	0.0	8.41	0.0	0		
09/25/2017	07:43:32	1.4	0.0	8.41	0.0	0		
09/25/2017	07:44:02	1.7	0.0	8.41	0.0	0		
09/25/2017	07:44:32	2.0	0.0	8.41	0.0	0		
09/25/2017	07:45:02	2.0	0.0	8.41	0.0	0		
09/25/2017	07:45:32	2.0	0.0	8.41	0.0	0		
09/25/2017	07:46:02	1.7	0.0	8.41	0.0	0		
09/25/2017	07:46:32	2.0	0.0	8.41	0.0	0		
09/25/2017	07:47:02	2.0	0.0	8.41	0.0	0		
09/25/2017	07:47:32	1.4	0.0	8.41	0.0	0		
09/25/2017	07:48:02	2.0	0.0	8.41	0.0	0		
09/25/2017	07:48:32	2.0	0.0	8.41	0.0	0		
09/25/2017	07:49:02	2.0	0.0	8.41	0.0	0		
09/25/2017	07:49:32	2.0	0.0	8.41	0.0	0		
09/25/2017	07:50:02	2.0	0.0	8.41	0.0	0		
09/25/2017	07:50:32	1.7	0.0	8.41	0.0	0		
09/25/2017	07:51:02	1.1	0.0	8.41	0.0	0		
09/25/2017	07:51:32	2.0	0.0	8.41	0.0	0		
09/25/2017	07:52:02	1.4	0.0	8.41	0.0	0		
09/25/2017	07:52:32	1.7	0.0	8.41	0.0	0		
09/25/2017	07:53:02	1.7	0.0	8.41	0.0	0		
09/25/2017	07:53:32	2.3	0.0	8.41	0.0	0		
09/25/2017	07:54:02	2.3	0.0	8.41	0.0	0		
09/25/2017	07:54:32	2.0	0.0	8.41	0.0	0		
09/25/2017	07:55:02	2.0	0.0	8.41	0.0	0		
09/25/2017	07:55:32	1.4	0.0	8.41	0.0	0		
09/25/2017	07:56:02	2.0	0.0	8.41	0.0	0		
09/25/2017	07:56:32	1.7	0.0	8.41	0.0	0		
09/25/2017	07:57:02	2.0	0.0	8.41	0.0	0		
09/25/2017	07:57:32	2.3	0.0	8.41	0.0	0		
09/25/2017	07:58:02	2.3	0.0	8.41	0.0	0		
09/25/2017	07:58:32	0.9	0.0	8.41	0.0	0		
09/25/2017	07:59:02	2.3	0.0	8.41	0.0	0		
09/25/2017	07:59:32	2.3	0.0	8.41	0.0	0		
09/25/2017	08:00:02	1.7	0.0	8.41	0.0	0		
09/25/2017	08:00:32	2.0	0.0	8.41	0.0	0		

Well			Field		Job Start	Customer		Job Number
NORDEN 2C-14HZ			WATTENBERG		Sep/25/2017	ANADARKO		2585087
Date	Time 24-hr clock	Treating Pressure PSI	Flow Rate B/M	Density LB/G	Volume BBL	Solid Fraction NULL	Message	
09/25/2017	08:01:32	1.7	0.0	8.41	0.0	0		
09/25/2017	08:02:02	2.0	0.0	8.41	0.0	0		
09/25/2017	08:02:32	2.0	0.0	8.41	0.0	0		
09/25/2017	08:03:02	1.7	0.0	8.41	0.0	0		
09/25/2017	08:03:32	2.0	0.0	8.41	0.0	0		
09/25/2017	08:04:02	2.0	0.0	8.41	0.0	0		
09/25/2017	08:04:32	1.7	0.0	8.41	0.0	0		
09/25/2017	08:05:02	2.0	0.0	8.41	0.0	0		
09/25/2017	08:05:32	1.7	0.0	8.41	0.0	0		
09/25/2017	08:06:02	1.7	0.0	8.41	0.0	0		
09/25/2017	08:06:32	2.3	0.0	8.41	0.0	0		
09/25/2017	08:07:02	2.0	0.0	8.41	0.0	0		
09/25/2017	08:07:32	2.3	0.0	8.41	0.0	0		
09/25/2017	08:08:02	2.0	0.0	8.41	0.0	0		
09/25/2017	08:08:32	2.0	0.0	8.41	0.0	0		
09/25/2017	08:09:02	2.0	0.0	8.41	0.0	0		
09/25/2017	08:09:32	2.3	0.0	8.41	0.0	0		
09/25/2017	08:10:02	2.3	0.0	8.41	0.0	0		
09/25/2017	08:10:32	2.3	0.0	8.41	0.0	0		
09/25/2017	08:11:02	2.3	0.0	8.41	0.0	0		
09/25/2017	08:11:32	2.0	0.0	8.41	0.0	0		
09/25/2017	08:12:02	2.0	0.0	8.41	0.0	0		
09/25/2017	08:12:32	2.3	0.0	8.41	0.0	0		
09/25/2017	08:13:02	2.3	0.0	8.41	0.0	0		
09/25/2017	08:13:32	2.0	0.0	8.41	0.0	0		
09/25/2017	08:14:02	2.0	0.0	8.41	0.0	0		
09/25/2017	08:14:32	2.3	0.0	8.41	0.0	0		
09/25/2017	08:15:02	2.6	0.0	8.41	0.0	0		
09/25/2017	08:15:32	2.0	0.0	8.41	0.0	0		
09/25/2017	08:16:02	1.7	0.0	8.41	0.0	0		
09/25/2017	08:16:32	1.7	0.0	8.41	0.0	0		
09/25/2017	08:17:02	2.0	0.0	8.41	0.0	0		
09/25/2017	08:17:32	2.0	0.0	8.41	0.0	0		
09/25/2017	08:18:02	2.3	0.0	8.41	0.0	0		
09/25/2017	08:18:32	2.6	0.0	8.41	0.0	0		
09/25/2017	08:19:02	1.7	0.0	8.41	0.0	0		
09/25/2017	08:19:32	2.3	0.0	8.41	0.0	0		
09/25/2017	08:20:02	2.3	0.0	8.41	0.0	0		
09/25/2017	08:20:32	2.3	0.0	8.41	0.0	0		
09/25/2017	08:21:02	1.7	0.0	8.41	0.0	0		
09/25/2017	08:21:32	2.0	0.0	8.41	0.0	0		
09/25/2017	08:22:02	2.0	0.0	8.41	0.0	0		
09/25/2017	08:22:32	2.3	0.0	8.41	0.0	0		
09/25/2017	08:23:02	2.0	0.0	8.41	0.0	0		
09/25/2017	08:23:32	2.3	0.0	8.41	0.0	0		
09/25/2017	08:24:02	2.6	0.0	8.41	0.0	0		
09/25/2017	08:24:32	2.3	0.0	8.41	0.0	0		
09/25/2017	08:25:02	1.7	0.0	8.41	0.0	0		
09/25/2017	08:25:32	2.3	0.0	8.41	0.0	0		
09/25/2017	08:26:02	2.0	0.0	8.41	0.0	0		
09/25/2017	08:26:32	2.0	0.0	8.41	0.0	0		
09/25/2017	08:27:02	2.6	0.0	8.41	0.0	0		
09/25/2017	08:27:32	2.3	0.0	8.41	0.0	0		
09/25/2017	08:28:02	2.3	0.0	8.41	0.0	0		

Well			Field		Job Start	Customer		Job Number
NORDEN 2C-14HZ			WATTENBERG		Sep/25/2017	ANADARKO		2585087
Date	Time 24-hr clock	Treating Pressure PSI	Flow Rate B/M	Density LB/G	Volume BBL	Solid Fraction NULL	Message	
09/25/2017	08:29:02	2.0	0.0	8.41	0.0	0		
09/25/2017	08:29:32	2.3	0.0	8.41	0.0	0		
09/25/2017	08:30:02	2.6	0.0	8.41	0.0	0		
09/25/2017	08:30:32	2.0	0.0	8.41	0.0	0		
09/25/2017	08:31:02	1.4	0.0	8.41	0.0	0		
09/25/2017	08:31:32	2.0	0.0	8.41	0.0	0		
09/25/2017	08:32:02	1.7	0.0	8.41	0.0	0		
09/25/2017	08:32:32	1.7	0.0	8.41	0.0	0		
09/25/2017	08:33:02	1.7	0.0	8.41	0.0	0		
09/25/2017	08:33:32	2.0	0.0	8.41	0.0	0		
09/25/2017	08:34:02	2.0	0.0	8.41	0.0	0		
09/25/2017	08:34:32	2.0	0.0	8.41	0.0	0		
09/25/2017	08:35:02	2.0	0.0	8.41	0.0	0		
09/25/2017	08:35:32	2.0	0.0	8.41	0.0	0		
09/25/2017	08:36:02	2.0	0.0	8.41	0.0	0		
09/25/2017	08:36:32	2.0	0.0	8.41	0.0	0		
09/25/2017	08:37:02	1.7	0.0	8.41	0.0	0		
09/25/2017	08:37:32	1.7	0.0	8.41	0.0	0		
09/25/2017	08:38:02	2.3	0.0	8.41	0.0	0		
09/25/2017	08:38:32	2.0	0.0	8.41	0.0	0		
09/25/2017	08:39:02	2.0	0.0	8.41	0.0	0		
09/25/2017	08:39:32	1.7	0.0	8.41	0.0	0		
09/25/2017	08:40:02	2.3	0.0	8.41	0.0	0		
09/25/2017	08:40:32	2.3	0.0	8.41	0.0	0		
09/25/2017	08:41:02	1.7	0.0	8.41	0.0	0		
09/25/2017	08:41:32	2.0	0.0	8.41	0.0	0		
09/25/2017	08:42:02	2.3	0.0	8.41	0.0	0		
09/25/2017	08:42:32	1.7	0.0	8.41	0.0	0		
09/25/2017	08:43:02	2.3	0.0	8.41	0.0	0		
09/25/2017	08:43:32	2.0	0.0	8.41	0.0	0		
09/25/2017	08:44:02	2.0	0.0	8.41	0.0	0		
09/25/2017	08:44:32	1.7	0.0	8.41	0.0	0		
09/25/2017	08:45:02	1.7	0.0	8.41	0.0	0		
09/25/2017	08:45:32	2.0	0.0	8.41	0.0	0		
09/25/2017	08:46:02	2.3	0.0	8.41	0.0	0		
09/25/2017	08:46:32	2.3	0.0	8.41	0.0	0		
09/25/2017	08:47:02	2.0	0.0	8.41	0.0	0		
09/25/2017	08:47:32	2.3	0.0	8.41	0.0	0		
09/25/2017	08:48:02	2.9	0.0	8.41	0.0	0		
09/25/2017	08:48:32	2.0	0.0	8.41	0.0	0		
09/25/2017	08:49:02	2.3	0.0	8.41	0.0	0		
09/25/2017	08:49:32	1.7	0.0	8.41	0.0	0		
09/25/2017	08:50:02	2.6	0.0	8.41	0.0	0		
09/25/2017	08:50:32	2.6	0.0	8.41	0.0	0		
09/25/2017	08:51:02	2.0	0.0	8.41	0.0	0		
09/25/2017	08:51:32	2.3	0.0	8.41	0.0	0		
09/25/2017	08:52:02	2.0	0.0	8.41	0.0	0		
09/25/2017	08:52:32	2.3	0.0	8.41	0.0	0		
09/25/2017	08:53:02	1.7	0.0	8.41	0.0	0		
09/25/2017	08:53:32	2.3	0.0	8.41	0.0	0		
09/25/2017	08:54:02	2.0	0.0	8.41	0.0	0		
09/25/2017	08:54:32	2.3	0.0	8.41	0.0	0		
09/25/2017	08:55:02	2.3	0.0	8.41	0.0	0		
09/25/2017	08:55:32	2.0	0.0	8.41	0.0	0		

Well			Field		Job Start	Customer		Job Number
NORDEN 2C-14HZ			WATTENBERG		Sep/25/2017	ANADARKO		2585087
Date	Time 24-hr clock	Treating Pressure PSI	Flow Rate B/M	Density LB/G	Volume BBL	Solid Fraction NULL	Message	
09/25/2017	08:56:32	2.0	0.0	8.41	0.0	0		
09/25/2017	08:57:02	1.7	0.0	8.41	0.0	0		
09/25/2017	08:57:32	2.3	0.0	8.41	0.0	0		
09/25/2017	08:58:02	2.9	0.0	8.41	0.0	0		
09/25/2017	08:58:32	2.3	0.0	8.41	0.0	0		
09/25/2017	08:59:02	2.0	0.0	8.41	0.0	0		
09/25/2017	08:59:32	2.3	0.0	8.41	0.0	0		
09/25/2017	09:00:02	1.7	0.0	8.41	0.0	0		
09/25/2017	09:00:32	1.7	0.0	8.41	0.0	0		
09/25/2017	09:01:02	2.6	0.0	8.41	0.0	0		
09/25/2017	09:01:32	2.6	0.0	8.41	0.0	0		
09/25/2017	09:02:02	2.3	0.0	8.41	0.0	0		
09/25/2017	09:02:32	2.6	0.0	8.41	0.0	0		
09/25/2017	09:03:02	2.3	0.0	8.41	0.0	0		
09/25/2017	09:03:32	1.7	0.0	8.41	0.0	0		
09/25/2017	09:04:02	2.3	0.0	8.41	0.0	0		
09/25/2017	09:04:32	2.6	0.0	8.41	0.0	0		
09/25/2017	09:05:02	2.6	0.0	8.41	0.0	0		
09/25/2017	09:05:32	2.6	0.0	8.41	0.0	0		
09/25/2017	09:06:02	2.3	0.0	8.41	0.0	0		
09/25/2017	09:06:32	2.3	0.0	8.41	0.0	0		
09/25/2017	09:07:02	2.3	0.0	8.41	0.0	0		
09/25/2017	09:07:32	2.3	0.0	8.41	0.0	0		
09/25/2017	09:08:02	2.6	0.0	8.41	0.0	0		
09/25/2017	09:08:32	2.0	0.0	8.41	0.0	0		
09/25/2017	09:09:02	2.0	0.0	8.41	0.0	0		
09/25/2017	09:09:32	2.3	0.0	8.41	0.0	0		
09/25/2017	09:10:02	2.6	0.0	8.41	0.0	0		
09/25/2017	09:10:32	2.9	0.0	8.41	0.0	0		
09/25/2017	09:11:02	2.3	0.0	8.41	0.0	0		
09/25/2017	09:11:32	2.6	0.0	8.41	0.0	0		
09/25/2017	09:12:02	2.6	0.0	8.41	0.0	0		
09/25/2017	09:12:32	2.0	0.0	8.41	0.0	0		
09/25/2017	09:13:02	2.6	0.0	8.41	0.0	0		
09/25/2017	09:13:32	2.3	0.0	8.41	0.0	0		
09/25/2017	09:14:02	2.0	0.0	8.41	0.0	0		
09/25/2017	09:14:32	2.3	0.0	8.41	0.0	0		
09/25/2017	09:15:02	2.6	0.0	8.41	0.0	0		
09/25/2017	09:15:32	2.9	0.0	8.41	0.0	0		
09/25/2017	09:16:02	2.6	0.0	8.41	0.0	0		
09/25/2017	09:16:32	2.3	0.0	8.41	0.0	0		
09/25/2017	09:17:02	2.9	0.0	8.41	0.0	0		
09/25/2017	09:17:32	2.3	0.0	8.41	0.0	0		
09/25/2017	09:18:02	2.3	0.0	8.41	0.0	0		
09/25/2017	09:18:32	2.9	0.0	8.41	0.0	0		
09/25/2017	09:19:02	2.3	0.0	8.41	0.0	0		
09/25/2017	09:19:32	2.6	0.0	8.41	0.0	0		
09/25/2017	09:20:02	2.3	0.0	8.41	0.0	0		
09/25/2017	09:20:32	2.6	0.0	8.41	0.0	0		
09/25/2017	09:21:02	2.9	0.0	8.41	0.0	0		
09/25/2017	09:21:32	2.3	0.0	8.40	0.0	0		
09/25/2017	09:22:02	2.9	0.0	8.41	0.0	0		
09/25/2017	09:22:32	2.6	0.0	8.41	0.0	0		
09/25/2017	09:23:02	2.0	0.0	8.41	0.0	0		

Well			Field		Job Start	Customer		Job Number
NORDEN 2C-14HZ			WATTENBERG		Sep/25/2017	ANADARKO		2585087
Date	Time 24-hr clock	Treating Pressure PSI	Flow Rate B/M	Density LB/G	Volume BBL	Solid Fraction NULL	Message	
09/25/2017	09:24:02	2.3	0.0	8.41	0.0	0		
09/25/2017	09:24:32	2.6	0.0	8.41	0.0	0		
09/25/2017	09:25:02	2.9	0.0	8.41	0.0	0		
09/25/2017	09:25:32	2.9	0.0	8.41	0.0	0		
09/25/2017	09:26:02	2.9	0.0	8.41	0.0	0		
09/25/2017	09:26:32	2.6	0.0	8.41	0.0	0		
09/25/2017	09:27:02	2.0	0.0	8.41	0.0	0		
09/25/2017	09:27:32	2.9	0.0	8.41	0.0	0		
09/25/2017	09:28:02	3.1	0.0	8.41	0.0	0		
09/25/2017	09:28:32	2.6	0.0	8.41	0.0	0		
09/25/2017	09:29:02	2.9	0.0	8.41	0.0	0		
09/25/2017	09:29:32	2.9	0.0	8.41	0.0	0		
09/25/2017	09:30:02	2.6	0.0	8.41	0.0	0		
09/25/2017	09:30:32	2.6	0.0	8.41	0.0	0		
09/25/2017	09:31:02	2.3	0.0	8.41	0.0	0		
09/25/2017	09:31:32	2.0	0.0	8.41	0.0	0		
09/25/2017	09:32:02	2.6	0.0	8.41	0.0	0		
09/25/2017	09:32:32	2.6	0.0	8.41	0.0	0		
09/25/2017	09:33:02	2.6	0.0	8.41	0.0	0		
09/25/2017	09:33:32	2.9	0.0	8.41	0.0	0		
09/25/2017	09:34:02	2.3	0.0	8.41	0.0	0		
09/25/2017	09:34:32	2.6	0.0	8.41	0.0	0		
09/25/2017	09:35:02	2.6	0.0	8.41	0.0	0		
09/25/2017	09:35:32	2.3	0.0	8.41	0.0	0		
09/25/2017	09:36:02	2.6	0.0	8.41	0.0	0		
09/25/2017	09:36:32	2.0	0.0	8.41	0.0	0		
09/25/2017	09:37:02	1.7	0.0	8.41	0.0	0		
09/25/2017	09:37:32	2.6	0.0	8.41	0.0	0		
09/25/2017	09:38:02	2.6	0.0	8.41	0.0	0		
09/25/2017	09:38:32	2.6	0.0	8.41	0.0	0		
09/25/2017	09:39:02	2.6	0.0	8.41	0.0	0		
09/25/2017	09:39:32	3.1	0.0	8.41	0.0	0		
09/25/2017	09:40:02	2.6	0.0	8.41	0.0	0		
09/25/2017	09:40:32	2.0	0.0	8.41	0.0	0		
09/25/2017	09:41:02	2.6	0.0	8.41	0.0	0		
09/25/2017	09:41:32	2.3	0.0	8.41	0.0	0		
09/25/2017	09:42:02	2.9	0.0	8.41	0.0	0		
09/25/2017	09:42:32	2.3	0.0	8.41	0.0	0		
09/25/2017	09:43:02	2.0	0.0	8.41	0.0	0		
09/25/2017	09:43:32	2.9	0.0	8.41	0.0	0		
09/25/2017	09:44:02	2.6	0.0	8.41	0.0	0		
09/25/2017	09:44:32	2.6	0.0	8.41	0.0	0		
09/25/2017	09:45:02	2.0	0.0	8.41	0.0	0		
09/25/2017	09:45:32	2.3	0.0	8.41	0.0	0		
09/25/2017	09:46:02	2.3	0.0	8.41	0.0	0		
09/25/2017	09:46:32	2.6	0.0	8.41	0.0	0		
09/25/2017	09:47:02	3.4	0.0	8.41	0.0	0		
09/25/2017	09:47:32	2.9	0.0	8.41	0.0	0		
09/25/2017	09:48:02	2.3	0.0	8.41	0.0	0		
09/25/2017	09:49:02	2.9	0.0	8.41	0.0	0		
09/25/2017	09:49:32	2.6	0.0	8.41	0.0	0		
09/25/2017	09:50:02	2.3	0.0	8.41	0.0	0		
09/25/2017	09:50:32	2.9	0.0	8.41	0.0	0		
09/25/2017	09:51:02	2.6	0.0	8.41	0.0	0		

Well NORDEN 2C-14HZ			Field WATTENBERG		Job Start Sep/25/2017	Customer ANADARKO		Job Number 2585087
Date	Time 24-hr clock	Treating Pressure PSI	Flow Rate B/M	Density LB/G	Volume BBL	Solid Fraction NULL	Message	
09/25/2017	09:52:02	2.6	0.0	8.41	0.0	0		
09/25/2017	09:52:32	2.3	0.0	8.41	0.0	0		
09/25/2017	09:53:02	2.6	0.0	8.41	0.0	0		
09/25/2017	09:53:32	2.9	0.0	8.41	0.0	0		
09/25/2017	09:54:02	2.3	0.0	8.41	0.0	0		
09/25/2017	09:54:32	2.3	0.0	8.41	0.0	0		
09/25/2017	09:55:02	2.6	0.0	8.41	0.0	0		
09/25/2017	09:55:32	2.6	0.0	8.41	0.0	0		
09/25/2017	09:56:02	2.9	0.0	8.41	0.0	0		
09/25/2017	09:56:32	2.9	0.0	8.41	0.0	0		
09/25/2017	09:57:02	2.9	0.0	8.41	0.0	0		
09/25/2017	09:57:32	2.6	0.0	8.41	0.0	0		
09/25/2017	09:58:02	2.9	0.0	8.41	0.0	0		
09/25/2017	09:58:32	3.1	0.0	8.41	0.0	0		
09/25/2017	09:59:02	2.9	0.0	8.41	0.0	0		
09/25/2017	09:59:32	2.3	0.0	8.41	0.0	0		
09/25/2017	10:00:02	2.6	0.0	8.41	0.0	0		
09/25/2017	10:00:32	3.1	0.0	8.41	0.0	0		
09/25/2017	10:01:02	2.3	0.0	8.41	0.0	0		
09/25/2017	10:01:32	2.9	0.0	8.41	0.0	0		
09/25/2017	10:02:02	2.9	0.0	8.41	0.0	0		
09/25/2017	10:02:32	2.9	0.0	8.41	0.0	0		
09/25/2017	10:03:02	2.9	0.0	8.41	0.0	0		
09/25/2017	10:03:32	2.9	0.0	8.41	0.0	0		
09/25/2017	10:04:02	2.9	0.0	8.41	0.0	0		
09/25/2017	10:04:32	2.6	0.0	8.41	0.0	0		
09/25/2017	10:05:02	3.1	0.0	8.41	0.0	0		
09/25/2017	10:05:32	3.1	0.0	8.41	0.0	0		
09/25/2017	10:06:02	2.9	0.0	8.41	0.0	0		
09/25/2017	10:06:32	3.1	0.0	8.41	0.0	0		
09/25/2017	10:07:02	2.3	0.0	8.41	0.0	0		
09/25/2017	10:07:32	2.9	0.0	8.41	0.0	0		
09/25/2017	10:08:02	3.1	0.0	8.41	0.0	0		
09/25/2017	10:08:32	2.6	0.0	8.41	0.0	0		
09/25/2017	10:09:02	2.3	0.0	8.41	0.0	0		
09/25/2017	10:09:32	2.9	0.0	8.41	0.0	0		
09/25/2017	10:10:02	2.6	0.0	8.41	0.0	0		
09/25/2017	10:10:32	3.1	0.0	8.41	0.0	0		
09/25/2017	10:11:02	2.9	0.0	8.41	0.0	0		
09/25/2017	10:11:32	2.9	0.0	8.41	0.0	0		
09/25/2017	10:12:02	2.9	0.0	8.41	0.0	0		
09/25/2017	10:12:32	2.9	0.0	8.41	0.0	0		
09/25/2017	10:13:02	3.1	0.0	8.41	0.0	0		
09/25/2017	10:13:32	3.1	0.0	8.41	0.0	0		
09/25/2017	10:14:02	3.1	0.0	8.41	0.0	0		
09/25/2017	10:14:32	3.1	0.0	8.41	0.0	0		
09/25/2017	10:15:02	3.1	0.0	8.41	0.0	0		
09/25/2017	10:15:32	2.3	0.0	8.41	0.0	0		
09/25/2017	10:16:02	3.1	0.0	8.41	0.0	0		
09/25/2017	10:16:32	2.9	0.0	8.41	0.0	0		
09/25/2017	10:17:02	3.4	0.0	8.41	0.0	0		
09/25/2017	10:17:32	3.4	0.0	8.41	0.0	0		
09/25/2017	10:18:02	3.7	0.0	8.41	0.0	0		
09/25/2017	10:18:32	3.1	0.0	8.41	0.0	0		

Well NORDEN 2C-14HZ			Field WATTENBERG		Job Start Sep/25/2017	Customer ANADARKO		Job Number 2585087
Date	Time 24-hr clock	Treating Pressure PSI	Flow Rate B/M	Density LB/G	Volume BBL	Solid Fraction NULL	Message	
09/25/2017	10:19:32	2.6	0.0	8.41	0.0	0		
09/25/2017	10:20:02	2.6	0.0	8.41	0.0	0		
09/25/2017	10:20:32	3.1	0.0	8.41	0.0	0		
09/25/2017	10:21:02	2.6	0.0	8.41	0.0	0		
09/25/2017	10:21:32	3.1	0.0	8.41	0.0	0		
09/25/2017	10:22:02	3.1	0.0	8.41	0.0	0		
09/25/2017	10:22:32	2.9	0.0	8.41	0.0	0		
09/25/2017	10:23:02	3.1	0.0	8.41	0.0	0		
09/25/2017	10:23:32	3.1	0.0	8.41	0.0	0		
09/25/2017	10:24:02	2.6	0.0	8.41	0.0	0		
09/25/2017	10:24:32	2.6	0.0	8.41	0.0	0		
09/25/2017	10:25:02	2.9	0.0	8.40	0.0	0		
09/25/2017	10:25:32	2.9	0.0	8.41	0.0	0		
09/25/2017	10:26:02	3.1	0.0	8.41	0.0	0		
09/25/2017	10:26:32	3.1	0.0	8.41	0.0	0		
09/25/2017	10:27:02	2.9	0.0	8.41	0.0	0		
09/25/2017	10:27:32	2.9	0.0	8.41	0.0	0		
09/25/2017	10:28:02	3.1	0.0	8.41	0.0	0		
09/25/2017	10:28:32	3.1	0.0	8.41	0.0	0		
09/25/2017	10:29:02	3.1	0.0	8.41	0.0	0		
09/25/2017	10:29:32	2.9	0.0	8.41	0.0	0		
09/25/2017	10:30:02	3.1	0.0	8.41	0.0	0		
09/25/2017	10:30:32	2.9	0.0	8.41	0.0	0		
09/25/2017	10:31:02	2.9	0.0	8.41	0.0	0		
09/25/2017	10:31:32	3.1	0.0	8.41	0.0	0		
09/25/2017	10:32:02	2.9	0.0	8.40	0.0	0		
09/25/2017	10:32:32	3.1	0.0	8.41	0.0	0		
09/25/2017	10:33:02	2.9	0.0	8.41	0.0	0		
09/25/2017	10:33:32	3.4	0.0	8.41	0.0	0		
09/25/2017	10:34:02	2.9	0.0	8.41	0.0	0		
09/25/2017	10:34:32	2.6	0.0	8.41	0.0	0		
09/25/2017	10:35:02	2.3	0.0	8.41	0.0	0		
09/25/2017	10:35:32	2.6	0.0	8.41	0.0	0		
09/25/2017	10:36:02	2.6	0.0	8.41	0.0	0		
09/25/2017	10:36:32	3.4	0.0	8.41	0.0	0		
09/25/2017	10:37:02	2.9	0.0	8.41	0.0	0		
09/25/2017	10:37:32	3.1	0.0	8.41	0.0	0		
09/25/2017	10:38:02	3.4	0.0	8.41	0.0	0		
09/25/2017	10:38:32	2.6	0.0	8.41	0.0	0		
09/25/2017	10:39:02	3.1	0.0	8.41	0.0	0		
09/25/2017	10:39:32	3.4	0.0	8.41	0.0	0		
09/25/2017	10:40:02	2.6	0.0	8.41	0.0	0		
09/25/2017	10:40:32	2.9	0.0	8.41	0.0	0		
09/25/2017	10:41:02	3.1	0.0	8.41	0.0	0		
09/25/2017	10:41:32	3.1	0.0	8.41	0.0	0		
09/25/2017	10:42:02	2.6	0.0	8.41	0.0	0		
09/25/2017	10:42:32	2.9	0.0	8.41	0.0	0		
09/25/2017	10:43:02	2.9	0.0	8.41	0.0	0		
09/25/2017	10:43:32	2.6	0.0	8.41	0.0	0		
09/25/2017	10:44:02	2.6	0.0	8.41	0.0	0		
09/25/2017	10:44:32	2.6	0.0	8.40	0.0	0		
09/25/2017	10:45:02	3.1	0.0	8.41	0.0	0		
09/25/2017	10:45:32	3.1	0.0	8.41	0.0	0		
09/25/2017	10:46:02	3.1	0.0	8.41	0.0	0		

Well			Field		Job Start	Customer		Job Number
NORDEN 2C-14HZ			WATTENBERG		Sep/25/2017	ANADARKO		2585087
Date	Time 24-hr clock	Treating Pressure PSI	Flow Rate B/M	Density LB/G	Volume BBL	Solid Fraction NULL	Message	
09/25/2017	10:47:02	2.9	0.0	8.41	0.0	0		
09/25/2017	10:47:32	2.9	0.0	8.41	0.0	0		
09/25/2017	10:48:02	2.9	0.0	8.41	0.0	0		
09/25/2017	10:48:32	3.1	0.0	8.41	0.0	0		
09/25/2017	10:49:02	3.7	0.0	8.41	0.0	0		
09/25/2017	10:49:32	2.9	0.0	8.41	0.0	0		
09/25/2017	10:50:02	3.1	0.0	8.41	0.0	0		
09/25/2017	10:50:32	3.1	0.0	8.41	0.0	0		
09/25/2017	10:51:02	3.1	0.0	8.41	0.0	0		
09/25/2017	10:51:32	3.1	0.0	8.41	0.0	0		
09/25/2017	10:52:02	2.9	0.0	8.41	0.0	0		
09/25/2017	10:52:32	3.4	0.0	8.41	0.0	0		
09/25/2017	10:53:02	3.1	0.0	8.41	0.0	0		
09/25/2017	10:53:32	2.6	0.0	8.41	0.0	0		
09/25/2017	10:54:02	3.1	0.0	8.41	0.0	0		
09/25/2017	10:54:32	3.4	0.0	8.41	0.0	0		
09/25/2017	10:55:02	3.4	0.0	8.41	0.0	0		
09/25/2017	10:55:32	3.1	0.0	8.41	0.0	0		
09/25/2017	10:56:02	2.9	0.0	8.41	0.0	0		
09/25/2017	10:56:32	2.9	0.0	8.41	0.0	0		
09/25/2017	10:57:02	2.9	0.0	8.41	0.0	0		
09/25/2017	10:57:32	3.1	0.0	8.41	0.0	0		
09/25/2017	10:58:02	2.9	0.0	8.41	0.0	0		
09/25/2017	10:58:32	3.4	0.0	8.41	0.0	0		
09/25/2017	10:59:02	3.1	0.0	8.41	0.0	0		
09/25/2017	10:59:32	3.1	0.0	8.41	0.0	0		
09/25/2017	11:00:02	2.9	0.0	8.41	0.0	0		
09/25/2017	11:00:32	3.7	0.0	8.41	0.0	0		
09/25/2017	11:01:02	2.6	0.0	8.41	0.0	0		
09/25/2017	11:01:32	2.9	0.0	8.41	0.0	0		
09/25/2017	11:02:02	2.9	0.0	8.41	0.0	0		
09/25/2017	11:02:32	2.9	0.0	8.41	0.0	0		
09/25/2017	11:03:02	3.1	0.0	8.41	0.0	0		
09/25/2017	11:03:32	2.9	0.0	8.41	0.0	0		
09/25/2017	11:04:02	2.9	0.0	8.41	0.0	0		
09/25/2017	11:04:32	3.1	0.0	8.41	0.0	0		
09/25/2017	11:05:02	3.7	0.0	8.41	0.0	0		
09/25/2017	11:05:32	3.4	0.0	8.41	0.0	0		
09/25/2017	11:06:02	2.9	0.0	8.41	0.0	0		
09/25/2017	11:06:32	3.1	0.0	8.41	0.0	0		
09/25/2017	11:07:02	2.9	0.0	8.41	0.0	0		
09/25/2017	11:07:32	3.1	0.0	8.41	0.0	0		
09/25/2017	11:08:02	3.1	0.0	8.41	0.0	0		
09/25/2017	11:08:32	3.1	0.0	8.41	0.0	0		
09/25/2017	11:09:02	2.9	0.0	8.41	0.0	0		
09/25/2017	11:09:32	3.1	0.0	8.41	0.0	0		
09/25/2017	11:10:02	2.9	0.0	8.41	0.0	0		
09/25/2017	11:10:32	2.9	0.0	8.41	0.0	0		
09/25/2017	11:11:02	2.6	0.0	8.41	0.0	0		
09/25/2017	11:11:32	3.4	0.0	8.41	0.0	0		
09/25/2017	11:12:02	3.1	0.0	8.41	0.0	0		
09/25/2017	11:12:32	3.4	0.0	8.41	0.0	0		
09/25/2017	11:13:02	3.1	0.0	8.41	0.0	0		
09/25/2017	11:13:32	3.4	0.0	8.41	0.0	0		

Well NORDEN 2C-14HZ			Field WATTENBERG		Job Start Sep/25/2017	Customer ANADARKO		Job Number 2585087
Date	Time 24-hr clock	Treating Pressure PSI	Flow Rate B/M	Density LB/G	Volume BBL	Solid Fraction NULL	Message	
09/25/2017	11:14:32	3.1	0.0	8.41	0.0	0		
09/25/2017	11:15:02	3.4	0.0	8.40	0.0	0		
09/25/2017	11:15:32	2.6	0.0	8.41	0.0	0		
09/25/2017	11:16:02	2.9	0.0	8.41	0.0	0		
09/25/2017	11:16:18	2.9	0.0	8.41	0.0	0	Start Job	
09/25/2017	11:16:32	3.1	0.0	8.41	0.0	0		
09/25/2017	11:17:02	1.7	0.0	8.41	0.0	0		
09/25/2017	11:17:12	1.7	0.0	8.41	0.0	0	Start Pumping Spacer	
09/25/2017	11:17:20	2.0	0.0	8.41	0.0	0	Pressure Test Lines	
09/25/2017	11:17:32	1.7	0.0	8.39	0.0	0		
09/25/2017	11:18:02	79.0	0.0	8.38	0.0	0		
09/25/2017	11:18:32	502.7	4.1	8.38	0.0	0		
09/25/2017	11:19:02	526.1	4.1	8.38	0.0	0		
09/25/2017	11:19:32	215.2	0.8	8.38	0.0	0	Reset Total, Vol = 5.12 bbl	
09/25/2017	11:20:02	100.7	0.0	8.38	0.0	0		
09/25/2017	11:20:32	97.0	0.0	8.38	0.0	0		
09/25/2017	11:21:02	871.2	0.2	8.38	0.0	0		
09/25/2017	11:21:32	809.4	0.0	8.38	0.0	0		
09/25/2017	11:22:02	797.4	0.0	8.38	0.0	0		
09/25/2017	11:22:32	4929.9	0.0	8.38	0.0	0		
09/25/2017	11:23:02	4884.1	0.0	8.38	0.0	0		
09/25/2017	11:23:32	4873.8	0.0	8.38	0.0	0		
09/25/2017	11:24:02	4867.2	0.0	8.38	0.0	0		
09/25/2017	11:24:32	4863.5	0.0	8.38	0.0	0		
09/25/2017	11:25:02	41.5	0.0	8.38	0.0	0		
09/25/2017	11:25:32	38.3	0.0	8.38	0.0	0		
09/25/2017	11:26:02	39.2	0.0	8.38	0.0	0		
09/25/2017	11:26:32	40.1	0.0	8.38	0.0	0		
09/25/2017	11:27:02	40.9	0.0	8.38	0.0	0		
09/25/2017	11:27:32	41.5	0.0	8.38	0.0	0		
09/25/2017	11:28:02	42.1	0.0	8.38	0.0	0		
09/25/2017	11:28:32	262.1	4.1	9.85	0.0	15		
09/25/2017	11:29:02	711.0	5.4	10.90	0.0	17		
09/25/2017	11:29:32	710.7	5.4	10.86	0.0	17		
09/25/2017	11:30:02	321.6	2.3	10.81	0.0	17		
09/25/2017	11:30:32	136.2	2.2	10.81	0.0	17		
09/25/2017	11:31:02	162.8	2.2	10.81	0.0	17		
09/25/2017	11:31:32	310.1	2.3	10.82	0.0	17		
09/25/2017	11:32:02	88.4	0.0	10.81	0.0	0		
09/25/2017	11:32:32	76.7	0.0	10.81	0.0	0		
09/25/2017	11:33:02	300.1	4.2	10.17	0.0	21		
09/25/2017	11:33:32	514.4	4.1	10.06	0.0	23		
09/25/2017	11:34:02	522.1	4.1	10.16	0.0	27		
09/25/2017	11:34:32	699.0	4.1	10.63	0.0	35		
09/25/2017	11:35:02	509.6	4.1	10.85	0.0	37		
09/25/2017	11:35:32	346.8	4.1	10.68	0.0	37		
09/25/2017	11:36:02	499.0	4.1	10.54	0.0	36		
09/25/2017	11:36:32	497.0	4.1	10.50	0.0	36		
09/25/2017	11:37:02	499.8	4.1	10.46	0.0	35		
09/25/2017	11:37:32	492.1	4.1	10.15	0.0	5		
09/25/2017	11:38:02	627.7	5.4	10.45	0.0	36		
09/25/2017	11:38:32	654.3	5.4	10.45	0.0	36		
09/25/2017	11:39:02	238.6	2.2	9.73	0.0	36		
09/25/2017	11:39:32	252.9	2.3	9.41	0.0	36		

Well			Field		Job Start	Customer		Job Number
NORDEN 2C-14HZ			WATTENBERG		Sep/25/2017	ANADARKO		2585087
Date	Time 24-hr clock	Treating Pressure PSI	Flow Rate B/M	Density LB/G	Volume BBL	Solid Fraction NULL	Message	
09/25/2017	11:40:32	293.0	2.3	10.36	0.0	30		
09/25/2017	11:40:56	98.7	2.3	13.90	0.0	30	End Spacer	
09/25/2017	11:40:57	116.2	1.5	12.74	0.0	0	Drop Bottom Plug	
09/25/2017	11:41:01	83.0	0.4	20.02	0.0	36	Reset Total, Vol = 40.91 bbl	
09/25/2017	11:41:02	74.1	0.0	20.61	0.0	36		
09/25/2017	11:41:32	62.4	0.0	19.78	0.0	36		
09/25/2017	11:42:02	62.7	0.0	18.72	0.0	0		
09/25/2017	11:42:32	62.1	0.0	18.74	0.0	0		
09/25/2017	11:43:02	61.5	0.0	18.28	0.0	0		
09/25/2017	11:43:32	61.5	0.0	17.90	0.0	0		
09/25/2017	11:44:02	60.9	0.0	17.94	0.0	0		
09/25/2017	11:44:32	61.5	0.0	14.41	0.0	0		
09/25/2017	11:45:02	61.2	0.0	11.77	0.0	0		
09/25/2017	11:45:32	60.9	0.0	11.50	0.0	0		
09/25/2017	11:46:02	60.7	0.0	11.50	0.0	0		
09/25/2017	11:46:32	573.1	4.2	11.84	0.0	36		
09/25/2017	11:47:02	569.4	4.1	11.92	0.0	39		
09/25/2017	11:47:32	380.8	2.3	11.96	0.0	42		
09/25/2017	11:47:41	257.5	2.2	11.95	0.0	42	Start Cement Slurry	
09/25/2017	11:47:43	255.2	2.3	11.95	0.0	42	Start Mixing Lead Slurry	
09/25/2017	11:48:02	249.5	2.3	11.95	0.0	42		
09/25/2017	11:48:32	257.8	2.3	11.95	0.0	42		
09/25/2017	11:49:02	265.2	2.3	11.88	0.0	41		
09/25/2017	11:49:32	238.9	2.2	11.80	0.0	41		
09/25/2017	11:50:02	217.4	2.3	11.69	0.0	40		
09/25/2017	11:50:32	204.9	2.3	11.63	0.0	40		
09/25/2017	11:51:02	214.3	2.3	11.68	0.0	41		
09/25/2017	11:51:32	192.0	2.3	11.54	0.0	41		
09/25/2017	11:52:02	189.7	2.2	11.54	0.0	40		
09/25/2017	11:52:32	196.0	2.3	11.36	0.0	38		
09/25/2017	11:53:02	166.5	2.3	11.35	0.0	38		
09/25/2017	11:53:32	173.1	2.2	11.26	0.0	37		
09/25/2017	11:54:02	164.2	2.3	11.25	0.0	37		
09/25/2017	11:54:32	153.1	2.3	11.25	0.0	38		
09/25/2017	11:55:02	162.5	2.3	11.26	0.0	38		
09/25/2017	11:55:32	149.9	2.2	11.26	0.0	38		
09/25/2017	11:56:02	143.1	2.3	11.26	0.0	37		
09/25/2017	11:56:32	137.3	2.2	11.22	0.0	37		
09/25/2017	11:57:02	129.6	2.3	11.20	0.0	37		
09/25/2017	11:57:32	136.2	2.2	11.34	0.0	38		
09/25/2017	11:58:02	374.8	4.1	11.45	0.0	39		
09/25/2017	11:58:32	120.7	2.3	11.47	0.0	40		
09/25/2017	11:59:02	117.6	2.2	11.46	0.0	40		
09/25/2017	11:59:32	110.4	2.2	11.47	0.0	40		
09/25/2017	12:00:02	105.3	2.2	11.46	0.0	40		
09/25/2017	12:00:32	107.9	2.2	11.55	0.0	41		
09/25/2017	12:01:02	103.9	2.2	11.55	0.0	42		
09/25/2017	12:01:32	355.9	4.1	11.68	0.0	43		
09/25/2017	12:02:02	353.3	4.1	11.68	0.0	43		
09/25/2017	12:02:32	345.0	4.1	11.68	0.0	43		
09/25/2017	12:03:02	349.6	4.1	11.76	0.0	44		
09/25/2017	12:03:32	343.0	4.1	11.79	0.0	44		
09/25/2017	12:04:02	338.8	4.1	11.81	0.0	45		
09/25/2017	12:04:32	331.0	4.1	11.81	0.0	45		

Well			Field		Job Start	Customer		Job Number
NORDEN 2C-14HZ			WATTENBERG		Sep/25/2017	ANADARKO		2585087
Date	Time 24-hr clock	Treating Pressure PSI	Flow Rate B/M	Density LB/G	Volume BBL	Solid Fraction NULL	Message	
09/25/2017	12:05:32	427.7	5.1	11.85	0.0	44		
09/25/2017	12:06:02	480.1	5.1	11.89	0.0	44		
09/25/2017	12:06:32	341.3	5.1	11.93	0.0	45		
09/25/2017	12:07:02	418.0	5.1	11.93	0.0	45		
09/25/2017	12:07:32	770.2	6.2	11.94	0.0	46		
09/25/2017	12:08:02	739.0	6.2	11.95	0.0	46		
09/25/2017	12:08:32	703.8	6.4	11.95	0.0	46		
09/25/2017	12:09:02	673.2	6.4	11.96	0.0	46		
09/25/2017	12:09:32	697.8	6.2	11.96	0.0	47		
09/25/2017	12:10:02	670.3	6.4	11.97	0.0	46		
09/25/2017	12:10:32	657.5	6.4	11.98	0.0	45		
09/25/2017	12:11:02	644.0	6.2	11.98	0.0	45		
09/25/2017	12:11:32	679.5	6.2	11.99	0.0	46		
09/25/2017	12:12:02	624.3	6.2	12.00	0.0	46		
09/25/2017	12:12:32	663.2	6.4	11.99	0.0	46		
09/25/2017	12:13:02	622.3	6.2	11.98	0.0	45		
09/25/2017	12:13:32	594.0	6.4	11.99	0.0	45		
09/25/2017	12:14:02	602.3	6.4	12.00	0.0	46		
09/25/2017	12:14:32	596.0	6.4	11.99	0.0	46		
09/25/2017	12:15:02	605.7	6.2	12.00	0.0	46		
09/25/2017	12:15:32	577.1	6.4	12.00	0.0	46		
09/25/2017	12:16:02	214.0	4.1	11.99	0.0	45		
09/25/2017	12:16:32	214.0	4.1	12.00	0.0	45		
09/25/2017	12:17:02	84.7	1.0	12.02	0.0	45		
09/25/2017	12:17:32	85.5	1.0	11.98	0.0	45		
09/25/2017	12:18:02	78.7	1.0	11.94	0.0	45		
09/25/2017	12:18:32	83.8	1.0	11.95	0.0	45		
09/25/2017	12:19:02	81.8	1.0	11.95	0.0	45		
09/25/2017	12:19:29	84.1	1.0	11.96	0.0	45	End Lead Slurry	
09/25/2017	12:19:32	85.0	1.0	12.01	0.0	45		
09/25/2017	12:20:02	208.6	4.1	11.95	0.0	15		
09/25/2017	12:20:32	229.5	4.1	12.09	0.0	45		
09/25/2017	12:21:02	99.0	2.3	11.94	0.0	17		
09/25/2017	12:21:32	4.9	1.0	6.22	0.0	0		
09/25/2017	12:22:02	4.0	0.0	14.11	0.0	0		
09/25/2017	12:22:32	4.3	0.0	14.28	0.0	0		
09/25/2017	12:23:02	3.7	0.0	14.30	0.0	0		
09/25/2017	12:23:32	3.7	0.0	14.26	0.0	0		
09/25/2017	12:24:02	4.3	0.0	14.21	0.0	0		
09/25/2017	12:24:32	4.3	0.0	14.19	0.0	0		
09/25/2017	12:25:02	4.6	0.0	14.14	0.0	0		
09/25/2017	12:25:32	4.3	0.0	12.53	0.0	0		
09/25/2017	12:26:02	4.9	0.0	12.27	0.0	0		
09/25/2017	12:26:32	4.6	0.0	12.20	0.0	0		
09/25/2017	12:26:42	4.3	0.0	12.19	0.0	0	Reset Total, Vol = 130.34 bbl	
09/25/2017	12:27:02	4.0	0.0	12.17	0.0	0		
09/25/2017	12:27:32	4.6	0.0	12.14	0.0	0		
09/25/2017	12:28:02	4.6	0.0	12.12	0.0	0		
09/25/2017	12:28:32	4.3	0.0	12.12	0.0	0		
09/25/2017	12:29:02	4.3	0.0	12.11	0.0	0		
09/25/2017	12:29:32	4.9	0.0	12.10	0.0	0		
09/25/2017	12:30:02	4.0	0.0	12.10	0.0	0		
09/25/2017	12:30:32	17.2	0.0	12.08	0.0	22		
09/25/2017	12:31:02	82.4	2.3	12.37	0.0	22		

Well			Field		Job Start	Customer		Job Number
NORDEN 2C-14HZ			WATTENBERG		Sep/25/2017	ANADARKO		2585087
Date	Time 24-hr clock	Treating Pressure PSI	Flow Rate B/M	Density LB/G	Volume BBL	Solid Fraction NULL	Message	
09/25/2017	12:32:02	77.2	2.2	12.55	0.0	24		
09/25/2017	12:32:32	158.8	4.1	12.71	0.0	27		
09/25/2017	12:33:02	179.4	4.1	12.88	0.0	29		
09/25/2017	12:33:32	169.1	4.2	12.75	0.0	29		
09/25/2017	12:33:55	163.1	4.1	12.65	0.0	28	Start Mixing Tail Slurry	
09/25/2017	12:34:02	165.7	4.1	12.50	0.0	28		
09/25/2017	12:34:32	151.4	4.1	12.47	0.0	27		
09/25/2017	12:35:02	150.5	4.1	12.49	0.0	28		
09/25/2017	12:35:32	164.5	4.1	12.70	0.0	30		
09/25/2017	12:36:02	167.4	4.1	12.83	0.0	31		
09/25/2017	12:36:32	92.4	2.3	12.85	0.0	31		
09/25/2017	12:37:02	81.3	2.3	12.84	0.0	31		
09/25/2017	12:37:32	168.2	4.1	12.84	0.0	30		
09/25/2017	12:38:02	171.7	4.1	12.84	0.0	31		
09/25/2017	12:38:03	173.7	4.1	12.84	0.0	31	End Tail Slurry	
09/25/2017	12:38:32	63.2	4.1	7.07	0.0	52		
09/25/2017	12:38:40	189.7	4.1	13.90	0.0	49	End Cement Slurry	
09/25/2017	12:39:02	244.9	4.1	13.69	0.0	37		
09/25/2017	12:39:32	234.0	4.1	13.65	0.0	50		
09/25/2017	12:40:02	53.8	2.2	6.70	0.0	47		
09/25/2017	12:40:03	32.0	2.2	7.59	0.0	47	Drop Top Plug	
09/25/2017	12:40:32	26.3	2.3	10.36	0.0	47		
09/25/2017	12:41:02	3.4	0.0	13.23	0.0	0		
09/25/2017	12:41:04	3.4	0.0	13.22	0.0	0	Start Displacement	
09/25/2017	12:41:32	2.0	0.0	13.03	0.0	0		
09/25/2017	12:42:02	2.0	0.0	12.27	0.0	0		
09/25/2017	12:42:32	1.4	0.0	11.51	0.0	0		
09/25/2017	12:43:02	0.9	0.0	11.50	0.0	0		
09/25/2017	12:43:32	1.1	0.0	11.42	0.0	0		
09/25/2017	12:44:02	0.6	0.0	10.78	0.0	0		
09/25/2017	12:44:32	1.4	0.0	10.55	0.0	0		
09/25/2017	12:45:02	1.1	0.0	9.66	0.0	0		
09/25/2017	12:45:32	0.9	0.0	9.18	0.0	0		
09/25/2017	12:46:02	1.1	0.0	8.99	0.0	0		
09/25/2017	12:46:32	1.1	0.0	8.87	0.0	0		
09/25/2017	12:47:02	1.1	0.0	8.81	0.0	0		
09/25/2017	12:47:13	0.9	0.0	8.81	0.0	0	Reset Total, Vol = 34.54 bbl	
09/25/2017	12:47:32	77.5	2.2	8.61	0.0	47		
09/25/2017	12:48:02	68.1	2.3	8.87	0.0	47		
09/25/2017	12:48:32	51.5	2.3	8.14	0.0	0		
09/25/2017	12:49:02	34.6	2.2	8.57	0.0	47		
09/25/2017	12:49:32	63.2	2.2	8.49	0.0	47		
09/25/2017	12:50:02	65.5	2.3	8.39	0.0	47		
09/25/2017	12:50:32	48.9	2.3	8.51	0.0	13		
09/25/2017	12:51:02	22.0	2.3	9.38	0.0	13		
09/25/2017	12:51:32	56.9	2.3	8.45	0.0	13		
09/25/2017	12:52:02	19.7	2.2	8.40	0.0	9		
09/25/2017	12:52:32	64.9	2.3	8.30	0.0	26		
09/25/2017	12:53:02	64.4	2.3	8.43	0.0	25		
09/25/2017	12:53:32	65.2	2.3	8.39	0.0	11		
09/25/2017	12:54:02	15.2	2.9	8.50	0.0	0		
09/25/2017	12:54:32	66.4	4.4	9.18	0.0	0		
09/25/2017	12:55:02	72.4	4.4	7.79	0.0	0		
09/25/2017	12:55:32	244.3	4.4	9.14	0.0	0		

Well			Field		Job Start	Customer		Job Number
NORDEN 2C-14HZ			WATTENBERG		Sep/25/2017	ANADARKO		2585087
Date	Time 24-hr clock	Treating Pressure PSI	Flow Rate B/M	Density LB/G	Volume BBL	Solid Fraction NULL	Message	
09/25/2017	12:56:32	370.8	6.4	9.16	0.0	0		
09/25/2017	12:57:02	367.6	6.4	9.10	0.0	0		
09/25/2017	12:57:32	351.6	6.4	9.13	0.0	0		
09/25/2017	12:58:02	341.9	6.4	9.13	0.0	0		
09/25/2017	12:58:32	351.3	6.5	9.13	0.0	0		
09/25/2017	12:59:02	329.3	6.4	9.11	0.0	0		
09/25/2017	12:59:32	334.2	6.4	9.10	0.0	0		
09/25/2017	13:00:02	349.0	6.4	9.10	0.0	0		
09/25/2017	13:00:32	330.7	6.4	9.09	0.0	0		
09/25/2017	13:01:02	357.3	6.5	9.08	0.0	0		
09/25/2017	13:01:32	356.2	6.4	9.08	0.0	0		
09/25/2017	13:02:02	533.9	6.4	9.08	0.0	0		
09/25/2017	13:02:32	628.6	6.4	9.07	0.0	0		
09/25/2017	13:03:02	665.8	6.4	9.07	0.0	0		
09/25/2017	13:03:32	709.3	6.5	9.07	0.0	0		
09/25/2017	13:04:02	724.4	6.4	9.07	0.0	0		
09/25/2017	13:04:32	789.1	6.4	9.06	0.0	0		
09/25/2017	13:05:02	819.7	6.2	9.06	0.0	0		
09/25/2017	13:05:32	845.7	6.4	9.06	0.0	0		
09/25/2017	13:06:02	865.8	6.4	9.06	0.0	0		
09/25/2017	13:06:32	899.5	6.2	9.06	0.0	0		
09/25/2017	13:07:02	982.5	6.2	9.06	0.0	0		
09/25/2017	13:07:32	992.5	6.2	9.06	0.0	0		
09/25/2017	13:08:02	1048.6	6.4	9.06	0.0	0		
09/25/2017	13:08:32	1074.3	6.2	9.06	0.0	0		
09/25/2017	13:09:02	1128.7	6.2	9.06	0.0	0		
09/25/2017	13:09:32	1173.3	6.4	9.06	0.0	0		
09/25/2017	13:10:02	1145.3	6.4	9.06	0.0	0		
09/25/2017	13:10:32	1234.8	6.4	9.07	0.0	0		
09/25/2017	13:11:02	1256.0	6.4	9.07	0.0	0		
09/25/2017	13:11:32	1310.9	6.4	9.07	0.0	0		
09/25/2017	13:12:02	1362.2	6.2	9.07	0.0	0		
09/25/2017	13:12:32	1349.0	6.4	9.07	0.0	0		
09/25/2017	13:13:02	1415.4	6.4	9.07	0.0	0		
09/25/2017	13:13:32	1417.1	6.2	9.07	0.0	0		
09/25/2017	13:14:02	988.2	4.1	9.08	0.0	0		
09/25/2017	13:14:32	1003.9	4.1	9.08	0.0	0		
09/25/2017	13:15:02	1011.4	4.1	9.08	0.0	0		
09/25/2017	13:15:32	1033.7	4.1	9.08	0.0	0		
09/25/2017	13:16:02	1052.6	4.1	9.08	0.0	0		
09/25/2017	13:16:32	1062.6	4.1	9.09	0.0	0		
09/25/2017	13:17:02	786.5	2.2	9.08	0.0	0		
09/25/2017	13:17:32	785.6	2.2	9.08	0.0	0		
09/25/2017	13:18:02	785.4	2.3	9.08	0.0	0		
09/25/2017	13:18:32	787.1	2.3	9.08	0.0	0		
09/25/2017	13:19:02	814.0	2.3	9.08	0.0	0		
09/25/2017	13:19:32	987.1	3.2	9.09	0.0	0		
09/25/2017	13:20:02	1001.9	3.3	9.08	0.0	0		
09/25/2017	13:20:32	1026.8	3.3	9.08	0.0	0		
09/25/2017	13:21:02	1045.4	3.3	9.08	0.0	0		
09/25/2017	13:21:32	1058.3	3.2	9.08	0.0	0		
09/25/2017	13:22:02	1070.6	3.2	9.08	0.0	0		
09/25/2017	13:22:32	1074.3	3.2	9.08	0.0	0		
09/25/2017	13:23:02	1122.4	3.2	9.08	0.0	0		

Well			Field		Job Start	Customer		Job Number
NORDEN 2C-14HZ			WATTENBERG		Sep/25/2017	ANADARKO		2585087
Date	Time 24-hr clock	Treating Pressure PSI	Flow Rate B/M	Density LB/G	Volume BBL	Solid Fraction NULL	Message	
09/25/2017	13:24:02	1152.7	3.3	9.09	0.0	0		
09/25/2017	13:24:32	1245.1	3.5	9.08	0.0	0		
09/25/2017	13:25:02	1378.5	4.1	9.08	0.0	0		
09/25/2017	13:25:32	1402.8	4.1	9.08	0.0	0		
09/25/2017	13:26:02	1432.2	4.1	8.75	0.0	0		
09/25/2017	13:26:32	1385.3	4.1	8.49	0.0	0		
09/25/2017	13:27:02	1484.3	4.1	9.07	0.0	0		
09/25/2017	13:27:32	1428.0	3.5	9.07	0.0	0		
09/25/2017	13:28:02	1415.4	3.4	9.06	0.0	0		
09/25/2017	13:29:02	1266.9	2.3	9.03	0.0	0		
09/25/2017	13:29:32	1248.9	2.3	9.00	0.0	0		
09/25/2017	13:30:02	1325.0	2.2	8.77	0.0	0		
09/25/2017	13:30:32	1248.3	2.2	8.47	0.0	0		
09/25/2017	13:31:02	1306.1	2.2	8.60	0.0	0		
09/25/2017	13:31:32	1272.6	2.3	8.44	0.0	0		
09/25/2017	13:32:02	1341.3	2.3	8.41	0.0	0		
09/25/2017	13:32:32	1329.3	2.3	8.40	0.0	0		
09/25/2017	13:33:02	1360.4	2.3	8.39	0.0	0		
09/25/2017	13:33:32	1335.5	2.2	8.40	0.0	0		
09/25/2017	13:34:02	1350.1	2.3	8.41	0.0	0		
09/25/2017	13:34:32	1412.2	2.2	8.40	0.0	0		
09/25/2017	13:35:02	1406.2	2.2	8.39	0.0	0		
09/25/2017	13:35:32	1410.8	2.3	8.53	0.0	0		
09/25/2017	13:36:02	1406.5	2.3	8.63	0.0	0		
09/25/2017	13:36:32	1473.2	2.3	8.41	0.0	0		
09/25/2017	13:37:02	1424.2	2.3	8.27	0.0	0		
09/25/2017	13:37:32	1494.3	2.3	8.25	0.0	0		
09/25/2017	13:38:02	1415.1	2.2	8.39	0.0	0		
09/25/2017	13:38:32	1764.1	4.1	8.38	0.0	0		
09/25/2017	13:39:02	1840.8	4.1	8.40	0.0	0		
09/25/2017	13:39:32	1865.7	4.1	8.39	0.0	0		
09/25/2017	13:40:02	1895.5	4.1	8.39	0.0	0		
09/25/2017	13:40:32	1915.8	4.1	8.39	0.0	0		
09/25/2017	13:41:02	1911.5	4.1	8.40	0.0	0		
09/25/2017	13:41:32	1932.1	4.1	8.39	0.0	0		
09/25/2017	13:42:02	2464.8	0.0	8.40	0.0	0		
09/25/2017	13:42:32	2472.5	0.0	8.40	0.0	0		
09/25/2017	13:43:02	2481.1	0.0	8.40	0.0	0		
09/25/2017	13:43:32	2489.4	0.0	8.40	0.0	0		
09/25/2017	13:44:02	2474.8	0.0	8.40	0.0	0		
09/25/2017	13:44:32	1874.6	0.0	8.41	0.0	0		
09/25/2017	13:45:02	674.9	0.0	8.41	0.0	0		
09/25/2017	13:45:32	2.3	0.0	8.41	0.0	0		
09/25/2017	13:46:02	7.2	0.0	8.41	0.0	0		
09/25/2017	13:46:32	60.9	1.3	8.40	0.0	0		
09/25/2017	13:47:02	1135.3	2.0	8.41	0.0	0		
09/25/2017	13:47:32	2331.8	2.0	8.41	0.0	0		
09/25/2017	13:48:02	2997.3	0.0	8.41	0.0	0		
09/25/2017	13:48:32	2996.1	0.0	8.41	0.0	0		
09/25/2017	13:49:02	2999.8	0.0	8.41	0.0	0		
09/25/2017	13:49:32	3003.8	0.0	8.41	0.0	0		
09/25/2017	13:50:00	3007.0	0.0	8.41	0.0	0	End Displacement	
09/25/2017	13:50:02	3007.8	0.0	8.41	0.0	0		
09/25/2017	13:50:32	3011.6	0.0	8.41	0.0	0		

Well			Field		Job Start	Customer		Job Number
NORDEN 2C-14HZ			WATTENBERG		Sep/25/2017	ANADARKO		2585087
Date	Time 24-hr clock	Treating Pressure PSI	Flow Rate B/M	Density LB/G	Volume BBL	Solid Fraction NULL	Message	
09/25/2017	13:51:32	3019.6	0.0	8.41	0.0	0		
09/25/2017	13:52:02	3023.6	0.0	8.41	0.0	0		
09/25/2017	13:52:32	3028.4	0.0	8.42	0.0	0		
09/25/2017	13:53:02	3032.2	0.0	8.42	0.0	0		
09/25/2017	13:53:32	3036.4	0.0	8.42	0.0	0		
09/25/2017	13:54:02	3039.9	0.0	8.42	0.0	0		
09/25/2017	13:54:32	3044.2	0.0	8.42	0.0	0		
09/25/2017	13:55:02	3047.9	0.0	8.42	0.0	0		
09/25/2017	13:55:32	3051.9	0.0	8.42	0.0	0		
09/25/2017	13:56:02	3055.6	0.0	8.42	0.0	0		
09/25/2017	13:56:32	3059.6	0.0	8.42	0.0	0		
09/25/2017	13:57:02	3063.1	0.0	8.42	0.0	0		
09/25/2017	13:57:32	3067.1	0.0	8.42	0.0	0		
09/25/2017	13:58:02	3070.8	0.0	8.42	0.0	0		
09/25/2017	13:58:32	3074.2	0.0	8.42	0.0	0		
09/25/2017	13:59:02	3077.9	0.0	8.42	0.0	0		
09/25/2017	13:59:32	3081.7	0.0	8.42	0.0	0		
09/25/2017	14:00:00	3085.1	0.0	8.42	0.0	0	Pressure Test Lines	
09/25/2017	14:00:02	3085.9	0.0	8.42	0.0	0		
09/25/2017	14:00:32	3088.5	0.0	8.42	0.0	0		
09/25/2017	14:01:02	3092.0	0.0	8.42	0.0	0		
09/25/2017	14:01:32	3095.1	0.0	8.42	0.0	0		
09/25/2017	14:02:02	3099.1	0.0	8.42	0.0	0		
09/25/2017	14:02:32	3102.3	0.0	8.42	0.0	0		
09/25/2017	14:03:02	3105.4	0.0	8.42	0.0	0		
09/25/2017	14:03:32	3109.1	0.0	8.42	0.0	0		
09/25/2017	14:04:02	3111.4	0.0	8.42	0.0	0		
09/25/2017	14:04:32	3114.8	0.0	8.42	0.0	0		
09/25/2017	14:05:02	3118.3	0.0	8.42	0.0	0		
09/25/2017	14:05:32	3025.6	0.0	8.42	0.0	0		
09/25/2017	14:06:02	1550.7	0.0	8.42	0.0	0		
09/25/2017	14:06:32	1.1	0.0	8.42	0.0	0		
09/25/2017	14:07:02	4.9	0.0	8.42	0.0	0		
09/25/2017	14:07:32	5.7	0.0	8.42	0.0	0		
09/25/2017	14:08:02	6.0	0.0	8.42	0.0	0		
09/25/2017	14:08:32	5.7	0.0	8.42	0.0	0		

### Post Job Summary

Average Pump Rates, bbl/min				Volume of Fluid Injected, bbl			
Slurry	N2	Mud	Maximum Rate	Total Slurry	Mud	Spacer	N2
				154.0		40.0	
Treating Pressure Summary, psi				Breakdown Fluid			
Maximum	Final	Average	Bump Plug to	Breakdown	Type	Volume	Density
5400.0	0.0		2500.0			bbl	lb/gal
Avg. N2 Percent		Designed Slurry Volume		Displacement		Mix Water Temp	
%		152.0 bbl		224.0 bbl		45.00 degF	
				Cement Circulated to Surface?		<input checked="" type="checkbox"/>	
				Washed Thru Perfs		<input type="checkbox"/>	
Customer or Authorized Representative				Schlumberger Supervisor		Circulation Lost	
LEVI ROGERS				NORM HASLAER		-	
						Volume 15.0 bbl	
						To m	
						Job Completed <input checked="" type="checkbox"/>	