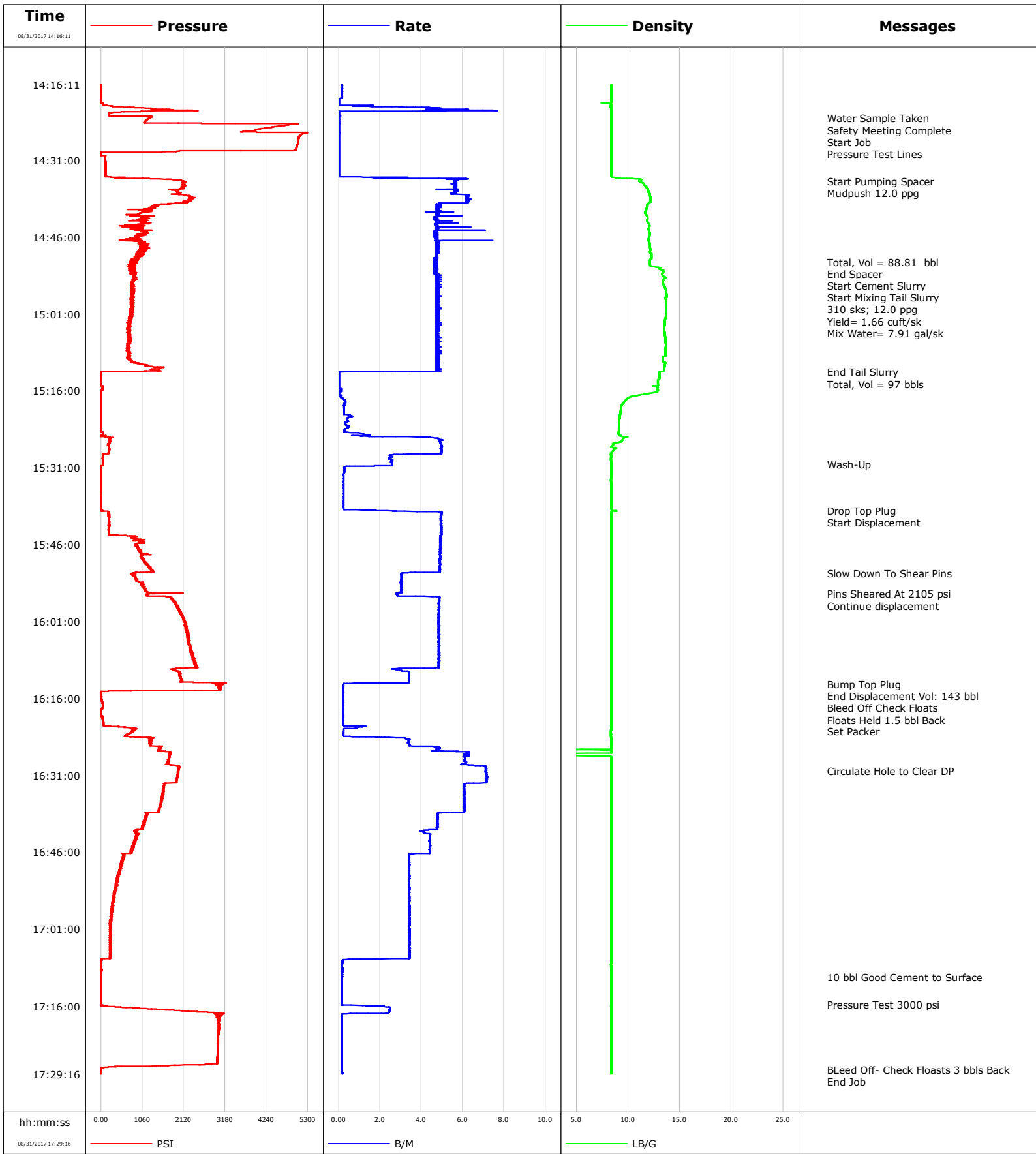


<b>Well</b>	NORDEN 1C-14HZ	<b>Client</b>	Anadarko
<b>Field</b>	Wattenberg	<b>SIR No.</b>	D8WD-00524
<b>Engineer</b>	Michael Lopez	<b>Job Type</b>	4.5 Liner
<b>Country</b>	United States	<b>Job Date</b>	08-31-2017



				Customer			Job Number			
				Anadarko			D8WD-00524			
Well		Location (legal)			Schlumberger Location			Job Start		
NORDEN 1C-14HZ 0631692297								Aug/31/2017		
Field		Formation Name/Type			Deviation	Bit Size		Well MD	Well TVD	
Wattenberg					deg	6.1 in		11790.0 ft	7554.7 ft	
County		State/Province			BHP	BHST	BHCT	Pore Press. Gradient		
Weld		Colorado			psi	234 degF	228 degF	lb/gal		
Well Master		API/UWI								
0631692297		05123435760000								
Rig Name	Drilled For		Service Via		Casing/Liner					
Xtreme 24	Oil & Gas		Land		Depth, ft	Size, in	Weight, lb/ft	Grade	Thread	
Offshore Zone	Well Class		Well Type		7090.0	7.0	26.0	C-90	8RD	
	New		Exploration		11790.0	4.5	11.6	P110	8RD	
Drilling Fluid Type		Max. Density	Plastic Viscosity		Tubing/Drill Pipe					
OBM		9.00 lb/gal	cP		T/D	Depth, ft	Size, in	Weight, lb/ft	Grade	Thread
Service Line	Job Type		D	5928.0	4.0	11.8	E-75	N/A		
Cementing	4.5 Liner		D	949.0	4.0	15.7	E-75			
Max. Allowed Tub. Press	Max. Allowed Ann. Press		WH Connection		Perforations/Open Hole					
3000 psi	psi		4" FH DP pin		Top, ft	Bottom, ft	shot/ft	No. of Shots	Total Interval	
<b>Service Instructions</b> 7" 26# Previous Casing: 7,080' 6 1/8" to TD // OH Excess: 6% Top of Cement: 6,880' TD: 11,838' (7,538')					ft	ft			ft	
					ft	ft			Diameter	
					ft	ft			in	
					Treat Down		Displacement		Packer Type	
Drill Pipe		145.0 bbl				6873.0 ft				
Tubing Vol.		Casing Vol.		Annular Vol.		Openhole Vol.				
70.0 bbl		76.0 bbl		bbl		bbl				
Casing/Tubing Secured		1 Hole Vol. Circulated prior to Cement			Casing Tools			Squeeze Job		
<input checked="" type="checkbox"/>		<input checked="" type="checkbox"/>								
Lift Pressure		psi			Shoe Type		Squeeze Type			
					Float					
Pipe Rotated		Pipe Reciprocated			Shoe Depth		Tool Type			
<input checked="" type="checkbox"/>		<input type="checkbox"/>			11790.0 ft					
No. Centralizers		Top Plugs	Bottom Plugs		Stage Tool Type			Tool Depth		
		1						ft		
Cement Head Type					Stage Tool Depth			Tail Pipe Size		
					ft			in		
Job Scheduled For		Arrived on Location		Leave Location		Collar Type		Tail Pipe Depth		
Aug/31/2017 11:00		Aug/31/2017 11:00		Aug/31/2017 19:30		Float		ft		
					Collar Depth		Sqz. Total Vol.			
					11704.5 ft		bbl			
Date	Time 24-hr clock	Treating Pressure PSI	Flow Rate B/M	Density LB/G	Volume BBL	Message				
08/31/2017	14:16:11	1	0.2	8.36	0.0	Started Acquisition				
08/31/2017	14:17:51	-2	0.2	8.36	0.3					
08/31/2017	14:19:31	-1	0.0	8.36	0.5					
08/31/2017	14:21:11	1793	5.4	8.36	3.8					
08/31/2017	14:22:45	1251	0.0	8.35	5.3	Water Sample Taken				
08/31/2017	14:22:46	1246	0.0	8.35	5.3	Safety Meeting Complete				
08/31/2017	14:22:49	1231	0.0	8.35	5.3	Pressure Test Lines				
08/31/2017	14:22:51	1225	0.0	8.35	5.3					
08/31/2017	14:24:31	4392	0.0	8.35	5.3					
08/31/2017	14:26:11	5092	0.0	8.35	5.3					
08/31/2017	14:27:51	5032	0.0	8.35	5.3					
08/31/2017	14:29:31	-1	0.0	8.35	5.3					
08/31/2017	14:31:11	114	0.0	8.35	5.3					
08/31/2017	14:32:51	122	0.0	8.36	5.3					
08/31/2017	14:34:31	511	4.8	9.15	5.8					
08/31/2017	14:35:03	2128	5.6	11.05	8.9	Start Pumping Spacer				
08/31/2017	14:35:58	2150	5.6	11.65	14.0	Mudpush 12.0 ppg				
08/31/2017	14:36:11	2071	5.7	11.76	15.2					
08/31/2017	14:37:51	2153	6.3	12.12	24.6					
08/31/2017	14:39:31	1766	4.7	11.90	34.7					
08/31/2017	14:41:11	1063	4.9	11.64	42.7					

Well		Field		Job Start		Customer		Job Number	
NORDEN 1C-14HZ 0631692297		Wattenberg		Aug/31/2017		Anadarko		D8WD-00524	
Date	Time 24-hr clock	Treating Pressure PSI	Flow Rate B/M	Density LB/G	Volume BBL	Message			
08/31/2017	14:44:31	968	4.8	11.98	58.6				
08/31/2017	14:46:11	843	4.8	12.00	66.5				
08/31/2017	14:47:51	989	4.8	12.12	74.5				
08/31/2017	14:49:31	889	4.8	12.25	82.4				
08/31/2017	14:50:47	756	4.7	12.13	88.4	Total, Vol = 88.81 bbl			
08/31/2017	14:50:52	831	4.6	12.13	88.8	End Spacer			
08/31/2017	14:50:57	816	4.7	12.13	89.2	Start Cement Slurry			
08/31/2017	14:51:11	837	4.8	12.13	90.3				
08/31/2017	14:52:34	813	4.7	13.41	96.8	Start Mixing Tail Slurry			
08/31/2017	14:52:38	847	4.8	13.45	97.1	310 sks; 12.0 ppg			
08/31/2017	14:52:39	742	4.7	13.45	97.2	Yield= 1.66 cuft/sk			
08/31/2017	14:52:51	847	4.7	13.39	98.1				
08/31/2017	14:54:18	841	4.7	13.42	105.0	Mix Water= 7.91 gal/sk			
08/31/2017	14:54:31	827	4.7	13.36	106.1				
08/31/2017	14:56:11	772	4.7	13.62	114.0				
08/31/2017	14:57:51	784	4.8	13.60	122.0				
08/31/2017	14:59:31	849	4.7	13.68	129.9				
08/31/2017	15:01:11	758	4.7	13.65	137.9				
08/31/2017	15:02:51	742	4.7	13.54	145.8				
08/31/2017	15:04:31	697	4.7	13.51	153.8				
08/31/2017	15:06:11	725	4.7	13.60	161.7				
08/31/2017	15:07:51	731	4.8	13.58	169.6				
08/31/2017	15:09:31	715	4.7	13.33	177.6				
08/31/2017	15:11:11	1231	4.7	13.56	185.5				
08/31/2017	15:12:17	5	0.0	13.06	190.5	End Tail Slurry			
08/31/2017	15:12:18	1	0.0	13.05	190.5	Total, Vol = 97 bbls			
08/31/2017	15:12:51	1	0.0	13.02	190.5				
08/31/2017	15:14:31	3	0.0	12.88	190.5				
08/31/2017	15:16:11	9	0.1	12.77	190.5				
08/31/2017	15:17:51	9	0.3	9.75	190.7				
08/31/2017	15:19:31	8	0.2	9.29	191.2				
08/31/2017	15:21:11	7	0.5	9.18	191.8				
08/31/2017	15:22:51	9	0.5	9.12	192.4				
08/31/2017	15:24:31	58	1.3	9.12	193.3				
08/31/2017	15:26:11	204	4.9	8.73	199.7				
08/31/2017	15:27:51	195	5.0	8.47	208.0				
08/31/2017	15:29:31	49	2.6	8.34	213.4				
08/31/2017	15:30:22	50	2.6	8.37	215.5	Wash-Up			
08/31/2017	15:31:11	-5	0.3	8.36	0.1				
08/31/2017	15:32:51	-4	0.2	8.35	0.5				
08/31/2017	15:34:31	-3	0.2	8.35	0.8				
08/31/2017	15:36:11	-3	0.2	8.36	1.2				
08/31/2017	15:37:51	2	0.2	8.36	1.6				
08/31/2017	15:39:22	37	1.8	8.70	2.1	Drop Top Plug			
08/31/2017	15:39:23	44	1.8	8.79	2.1	Start Displacement			
08/31/2017	15:39:31	185	3.2	8.52	2.5				
08/31/2017	15:41:11	206	4.9	8.39	10.6				
08/31/2017	15:42:51	196	4.9	8.36	18.9				
08/31/2017	15:44:31	883	4.9	8.37	27.1				
08/31/2017	15:46:11	920	4.9	8.37	35.3				
08/31/2017	15:47:51	1207	4.9	8.36	43.5				
08/31/2017	15:49:31	1169	4.9	8.36	51.6				
08/31/2017	15:51:11	1341	4.9	8.36	59.8				
08/31/2017	15:51:39	795	3.0	8.36	61.7	Slow Down To Shear Pins			

Well NORDEN 1C-14HZ 0631692297			Field Wattenberg		Job Start Aug/31/2017	Customer Anadarko	Job Number D8WD-00524
Date	Time 24-hr clock	Treating Pressure PSI	Flow Rate B/M	Density LB/G	Volume BBL	Message	
08/31/2017	15:54:31	1094	3.0	8.35	70.3		
08/31/2017	15:55:34	1315	2.8	8.35	73.5	Pins Sheared At 2105 psi	
08/31/2017	15:56:09	1697	4.8	8.36	75.3	Continue displacement	
08/31/2017	15:56:11	1715	4.8	8.36	75.5		
08/31/2017	15:57:51	1951	4.8	8.36	83.5		
08/31/2017	15:59:31	2067	4.8	8.36	91.6		
08/31/2017	16:01:11	2182	4.8	8.36	99.7		
08/31/2017	16:02:51	2227	4.8	8.36	107.7		
08/31/2017	16:04:31	2229	4.8	8.36	115.8		
08/31/2017	16:06:11	2309	4.8	8.36	123.9		
08/31/2017	16:07:51	2335	4.8	8.36	131.9		
08/31/2017	16:09:31	2421	4.8	8.36	140.0		
08/31/2017	16:11:11	2043	3.4	8.36	146.2		
08/31/2017	16:12:51	2368	3.4	8.36	151.9		
08/31/2017	16:13:10	2932	0.2	8.35	152.5	Bump Top Plug	
08/31/2017	16:13:11	2924	0.2	8.35	152.5	End Displacement Vol: 143 bbl	
08/31/2017	16:14:31	763	0.2	8.35	152.8		
08/31/2017	16:14:33	486	0.2	8.35	152.8	Bleed Off Check Floats	
08/31/2017	16:14:54	-6	0.2	8.35	152.8	Floats Held 1.5 bbl Back	
08/31/2017	16:16:11	12	0.2	8.35	0.3		
08/31/2017	16:17:51	47	0.2	8.35	0.6		
08/31/2017	16:19:31	51	0.2	8.35	1.0		
08/31/2017	16:21:11	61	0.2	8.35	1.3		
08/31/2017	16:21:17	71	0.2	8.35	1.3	Set Packer	
08/31/2017	16:22:51	724	0.2	8.35	2.1		
08/31/2017	16:24:31	1247	3.4	8.36	5.4		
08/31/2017	16:26:11	1497	4.7	8.36	12.3		
08/31/2017	16:27:51	1730	6.1	8.36	22.3		
08/31/2017	16:29:31	2005	7.1	8.36	33.0		
08/31/2017	16:30:11	1980	7.1	8.36	37.7	Circulate Hole to Clear DP	
08/31/2017	16:31:11	1953	7.1	8.36	44.8		
08/31/2017	16:32:51	1632	6.1	8.36	56.4		
08/31/2017	16:34:31	1598	6.1	8.36	66.5		
08/31/2017	16:36:11	1555	6.1	8.36	76.6		
08/31/2017	16:37:51	1491	6.1	8.36	86.7		
08/31/2017	16:39:31	1142	4.8	8.36	95.2		
08/31/2017	16:41:11	1053	4.8	8.36	103.2		
08/31/2017	16:42:51	932	4.4	8.36	110.5		
08/31/2017	16:44:31	847	4.4	8.36	117.8		
08/31/2017	16:46:11	804	4.4	8.36	125.2		
08/31/2017	16:47:51	532	3.4	8.36	130.9		
08/31/2017	16:49:31	483	3.4	8.36	136.6		
08/31/2017	16:51:11	420	3.4	8.36	142.3		
08/31/2017	16:52:51	386	3.4	8.36	148.0		
08/31/2017	16:54:31	337	3.4	8.36	153.7		
08/31/2017	16:56:11	295	3.4	8.36	159.4		
08/31/2017	16:57:51	268	3.4	8.36	165.1		
08/31/2017	16:59:31	244	3.4	8.36	170.8		
08/31/2017	17:01:11	240	3.4	8.36	176.5		
08/31/2017	17:02:51	243	3.4	8.36	182.2		
08/31/2017	17:04:31	245	3.4	8.36	187.9		
08/31/2017	17:06:11	235	3.4	8.36	193.6		
08/31/2017	17:07:51	13	0.2	8.35	196.0		
08/31/2017	17:09:31	12	0.2	8.35	196.3		

Well		Field		Job Start		Customer		Job Number	
NORDEN 1C-14HZ 0631692297		Wattenberg		Aug/31/2017		Anadarko		D8WD-00524	
Date	Time 24-hr clock	Treating Pressure PSI	Flow Rate B/M	Density LB/G	Volume BBL	Message			
08/31/2017	17:11:11	12	0.2	8.35	196.6				
08/31/2017	17:12:51	12	0.2	8.35	196.9				
08/31/2017	17:14:31	12	0.2	8.35	197.1				
08/31/2017	17:15:43	12	0.2	8.35	197.3	Pressure Test 3000 psi			
08/31/2017	17:16:11	369	2.4	8.35	197.9				
08/31/2017	17:17:51	3034	0.2	8.35	201.1				
08/31/2017	17:19:31	3007	0.2	8.35	201.3				
08/31/2017	17:21:11	3006	0.2	8.36	201.6				
08/31/2017	17:22:51	2997	0.2	8.35	201.9				
08/31/2017	17:24:31	2988	0.2	8.36	202.1				
08/31/2017	17:26:11	2979	0.2	8.36	202.4				
08/31/2017	17:27:51	387	0.2	8.35	202.7				
08/31/2017	17:28:25	-1	0.2	8.35	202.7	Bleed Off- Check Floasts 3 bbls Back			

### Post Job Summary

Average Pump Rates, bbl/min					Volume of Fluid Injected, bbl			
Slurry	N2	Mud	Maximum Rate	Total Slurry	Mud	Spacer	N2	
3.2			7.7	92.0	0.0	80.0		
Treating Pressure Summary, psi					Breakdown Fluid			
Maximum	Final	Average	Bump Plug to	Breakdown	Type	Volume	Density	
3000	0	1097	2900			bbl	lb/gal	
Avg. N2 Percent	Designed Slurry Volume	Displacement	Mix Water Temp	Cement Circulated to Surface?	<input checked="" type="checkbox"/>	Volume	10.0 bbl	
%	92.0 bbl	145.0 bbl	65 degF	Washed Thru Perfs	<input type="checkbox"/>	To	ft	
Customer or Authorized Representative	Schlumberger Supervisor			Circulation Lost	<input type="checkbox"/>	Job Completed	<input checked="" type="checkbox"/>	
Rick Duran	Michael Lopez			-		-		