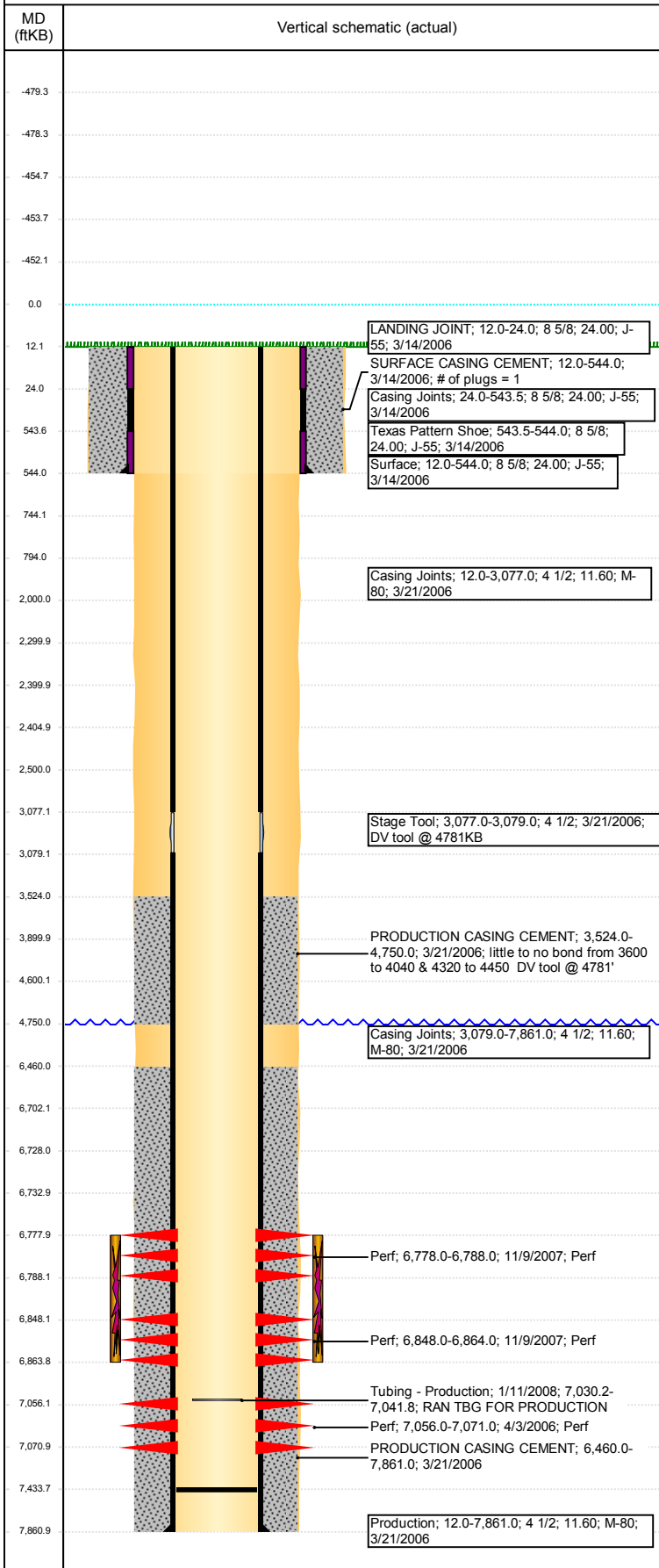


Well Name: BEEBE DRAW G26-23

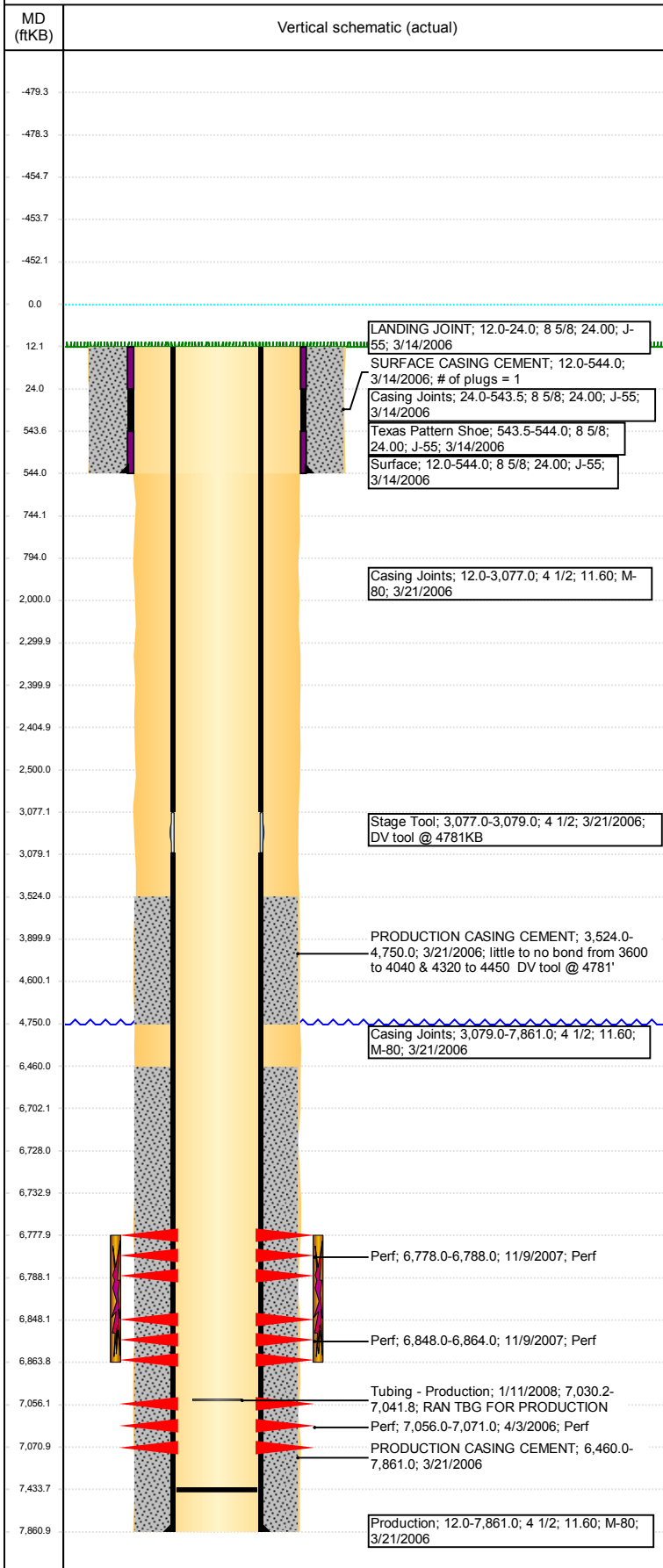
VERTICAL - ORIGINAL HOLE, 11/30/2017 4:07:51 PM



Well Header							
API 05-123-23613	Business Unit DJ BASIN		District 15		Well Config VERTICAL		
Original KB Elevation (ft) 4,768	KB - GL / MSL (ftKB) 12.00		Spud Date 3/13/2006		P & A Date		
Comment							
Directions To Well RD 40 & RD 47 N 5/10 W & S 4/10 INTO							
Congressional Location							
Quarter 3 NE	Quarter 4 SE	Section 26	Township 4	Twntshp N/S Dir N	Range 65	Range E/W Dir W	
Bottom Hole Location							
North-South Distance (ft)		From N or S Line		East-West Distance (ft)		From E or W Line	
Plug Back Total Depths							
Date	Depth (ftKB)	Method			Com		
3/21/2006	7,861.0	Cased Hole log			FP drilled out pushed to 7261.65' C/O SAND PLUG		
9/7/2006	7,261.6						
1/10/2008	7,433.6						
Wellbore Sections							
Section Des		Size (in)		Act Top, MD (ftKB)		Act Btm, MD (ftKB)	
SURFACE		12 1/4		12		544	
PRODUCTION		7 7/8		544		7,861	
Zone Statuses							
Zone Name	Status Date	Status	Fluid Type	Job	Prod Method		
NIOBRARA	12/6/2007	PR	Gas	RECOMPLETI...	Flowing		
NIOBRARA	2/8/2010	PR	Water				
NIOBRARA	6/13/2017	SI					
CODELL	4/13/2006	PR	Gas	DRILLING/CO...	Flowing		
CODELL	11/7/2007	SI	Gas	RECOMPLETI...			
CODELL	1/10/2008	PR	Gas	COMMINGLE...			
CODELL	2/8/2010	PR	Water				
Casing Strings							
Surface, 544.0ftKB							
Casing Description Surface	Run Date 3/14/2006	OD (in) 8 5/8	Wt/Len (l...) 24.00	Grade J-55	Top, MD (ft...) 12.0	MD (ftKB) 544.0	
Production, 7,861.0ftKB							
Casing Description Production	Run Date 3/21/2006	OD (in) 4 1/2	Wt/Len (l...) 11.60	Grade M-80	Top, MD (ft...) 12.0	MD (ftKB) 7,861.0	
Cement							
Description SURFACE CASING CEMENT				Top Depth (ftKB) 12.0		Bottom Depth (ftKB) 544.0	
Description PRODUCTION CASING CEMENT				Top Depth (ftKB) 3,524.0		Bottom Depth (ftKB) 4,750.0	
Description PRODUCTION CASING CEMENT				Top Depth (ftKB) 6,460.0		Bottom Depth (ftKB) 7,861.0	
Description Dump Bail				Top Depth (ftKB) 6,702.0		Bottom Depth (ftKB) 6,728.0	
Description Balance Plug				Top Depth (ftKB) 3,900.0		Bottom Depth (ftKB) 4,600.0	
Description Balance Plug				Top Depth (ftKB) 2,405.0		Bottom Depth (ftKB) 2,500.0	
Description Balance Plug				Top Depth (ftKB) 2,300.0		Bottom Depth (ftKB) 2,400.0	
Description Cement Squeeze				Top Depth (ftKB) 2,000.0		Bottom Depth (ftKB) 2,500.0	
Description Balance Plug				Top Depth (ftKB) 744.0		Bottom Depth (ftKB) 794.0	
Description Balance Plug				Top Depth (ftKB) 544.0		Bottom Depth (ftKB) 744.0	
Description Balance Plug				Top Depth (ftKB) 0.0		Bottom Depth (ftKB) 544.0	
Tubing Strings							
Tubing Description Tubing - Production	Run Date 9/8/2006	String... 2 3/8	ID (in) 2.00	Wt (lb/ft) 4.70	Grade J-55	Len (ft) 7,036.40	Set De... 40
Tubing Components							
Item Des	OD (in)	Wt (lb/ft)	Grade	Jts	Len (ft)	Btm (ftKB)	Btm (TVD) (ftKB)
Tubing	2 3/8	4.70	J-55	217	7,036.40	7,036.4	

Well Name: BEEBE DRAW G26-23

VERTICAL - ORIGINAL HOLE, 11/30/2017 4:07:51 PM



Tubing Strings							
Tubing Description	Run Date	String...	ID (in)	Wt (lb/ft)	Grade	Len (ft)	Set De...
Tubing - Production	1/11/2008	2 3/8				11.60	
Tubing Components							
Item Des	OD (in)	Wt (lb/ft)	Grade	Jts	Len (ft)	Btm (ftKB)	Btm (TVD) (ftKB)
Tubing	2 3/8	4.70	J-55	217		7,030.2	
Seal Nipple	2 3/8			1	1.00	7,031.2	
Notched collar	2 3/8			1	0.60	7,031.8	
Tubing Pup Joint	2 3/8			1	10.00	7,041.8	
Other In Hole							
Run Date	Des			OD (in)	Top (ftKB)	Btm (ftKB)	
6/22/2017	Cement Retainer			3.99	2,400.0	2,405.0	
6/22/2017	Cast Iron Bridge Plug			3.99	6,728.0	6,733.0	
Logs							
Date	Type				Top, MD (ftKB)	Btm, MD (ftKB)	
3/21/2006	Cement Bond						
3/21/2006	Compensated Density/Neutron						
3/21/2006	Induction						
Perforation Data							
Linked Zone	Bnch/St g	Sum of Entered Shot Total	Top (ftKB)	Btm (ftKB)	Date		
CODELL, ORIGINAL HOLE		0	2,500.00	2,500.00	6/22/2017		
NIOBRARA, ORIGINAL HOLE	A	40	6,778.00	6,788.00	11/9/2007		
NIOBRARA, ORIGINAL HOLE	B	64	6,848.00	6,864.00	11/9/2007		
CODELL, ORIGINAL HOLE		60	7,056.00	7,071.00	4/3/2006		
Total (Sum)		164					
Stimulation Intervals							
Start Date		Primary Job Type					
4/12/2006		DRILLING/COMPLETION - ORIGINAL					
Technical Result		Tech Result Details			Tech Result Note		
Comment							
Nio comp aborted, plug got stuck in hole.							
Start Date		Primary Job Type					
12/5/2007		RECOMPLETION					
Technical Result		Tech Result Details			Tech Result Note		
Success		According to Plan					
Comment							
JOB WENT WELL WITH NO ISSUES TO REPORT.							