

HALLIBURTON

iCem[®] Service

TERRA ENERGY PARTNERS

For: Terra

Date: Saturday, September 23, 2017

SR 42-12 Surface

API#05-045-23305

Sincerely,

Grand Junction Cement Engineering

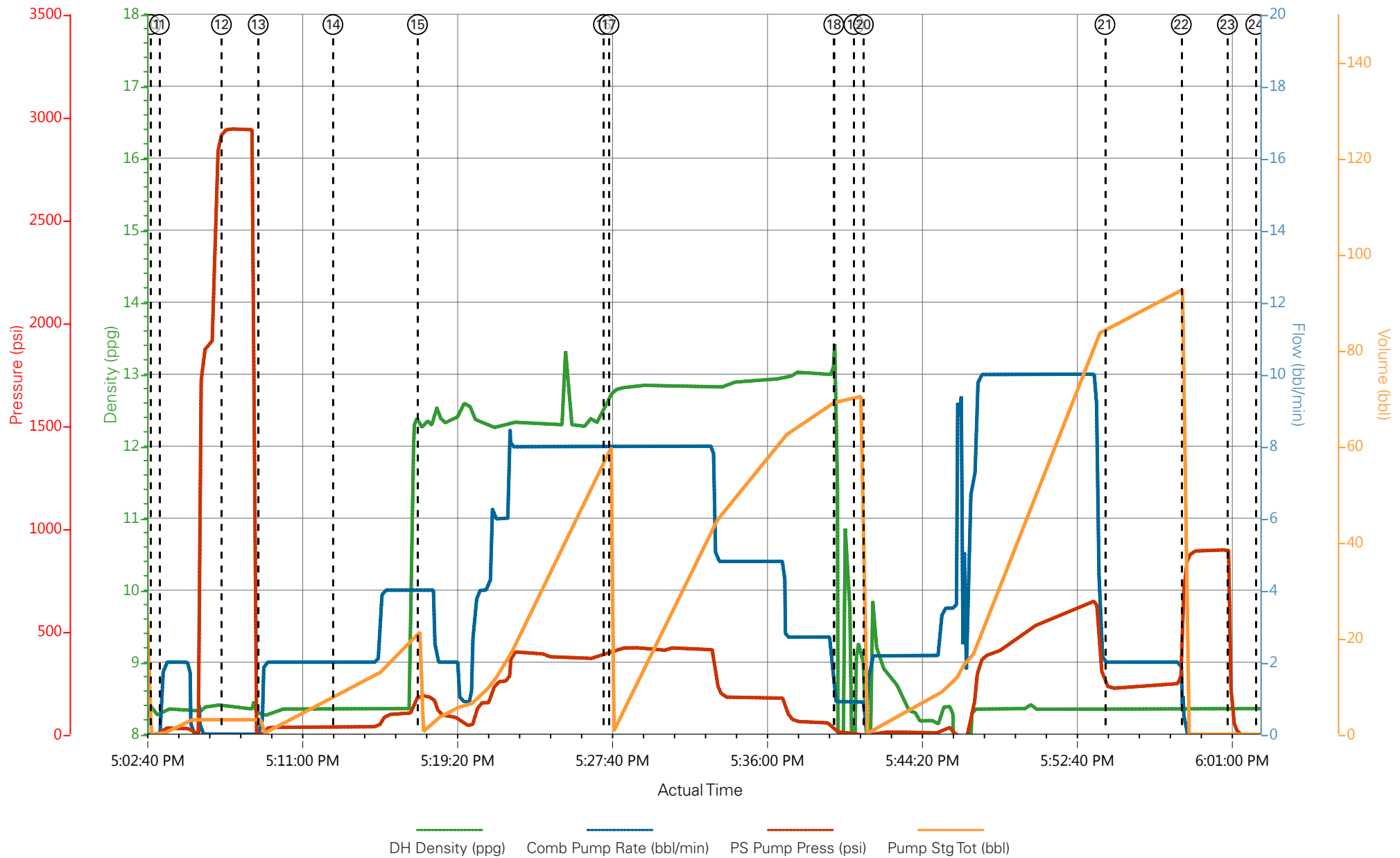
2.0 Real-Time Job Summary

2.1 Job Event Log

Type	Seq. No.	Graph Label	Date	Time	Source	DH Density (ppg)	Comb Pump Rate (bbl/min)	PS Pump Press (psi)	Pump Stg Tot (bbl)	Comments
Event	1	Call Out	9/23/2017	11:30:00	USER					ON LOCATION REQUESTED 16:30
Event	2	Pre-Convoy Safety Meeting	9/23/2017	13:45:00	USER					ALL HES PRESENT
Event	3	Crew Leave Yard	9/23/2017	14:00:00	USER					
Event	4	Arrive at Location from Service Center	9/23/2017	15:45:00	USER					RIG ON BOTTOM
Event	5	Assessment Of Location Safety Meeting	9/23/2017	15:50:00	USER					MET WITH COMPANY REP, SDS OFFERED. JOB PROCEDURE DISCUSSED
Event	6	Pre-Rig Up Safety Meeting	9/23/2017	16:00:00	USER					ALL HES PRESENT
Event	7	Rig-Up Completed	9/23/2017	16:35:10	USER					1-ELITE, 1-660 BULK TRAILER, 9.625" QL PLUG CONTAINER, 2" PUMP IRON, 4" SUCTION HOSE
Event	8	Pre-Job Safety Meeting	9/23/2017	16:50:00	USER					ALL HES AND RIG CREW PRESENT
Event	9	Other	9/23/2017	16:55:00	USER					WATER: TEMP-58, CL-0, PH-7. RIG CIRCULATED 45 MINS 718 GPM, 245 PSI
Event	10	Start Job	9/23/2017	17:03:00	COM5	8.35	0.00	3.00	0.0	TD-1135', TP-1125', SJ-44.08', OH-13.5", MUD-9.5PPG, CSG-9.625" 32.3# H40
Event	11	Prime Pumps	9/23/2017	17:03:28	USER	8.31	2.00	20.00	3.0	FRESH WATER
Event	12	Test Lines	9/23/2017	17:06:49	COM5	8.41	0.00	2940.00	3.0	ALL PRESSURE HELD
Event	13	Pump Water	9/23/2017	17:08:47	COM5	8.29	4.00	74.00	20.0	FRESH WATER
Event	14	Check weight	9/23/2017	17:12:48	COM5					WEIGHT VERIFIED BY PRESSURIZED MUD SCALES
Event	15	Pump Lead Cement	9/23/2017	17:17:21	COM5	12.30	8.00	400.00	52.9	VARICEM LEAD 125SKS, 12.3PPG, 2.38CF/SK, 13.77GAL/SK

Event	16	Check weight	9/23/2017	17:27:21	COM5					WEIGHT VERIFIED BY PRESSURIZED MUD SCALES
Event	17	Pump Tail Cement	9/23/2017	17:27:39	COM5	12.80	8.00	410.00	65.8	VARICEM TAIL 175SKS, 12.8PPG, 2.11CF/SK, 11.78GAL/SK
Event	18	Shutdown	9/23/2017	17:39:45	USER					END OF CEMENT
Event	19	Drop Top Plug	9/23/2017	17:40:49	USER					PLUG AWAY
Event	20	Pump Displacement	9/23/2017	17:41:20	COM5	8.35	10.00	657.00	85.1	FRESH WATER
Event	21	Slow Rate	9/23/2017	17:54:20	USER	8.36	2.00	230.00	75.1	SLOW RATE LAST 10 BBLs
Event	22	Bump Plug	9/23/2017	17:58:26	COM5	8.37	2.00	241.00	85.1	PLUG BUMPED 241PSI
Event	23	Check Floats	9/23/2017	18:00:55	USER	8.37	0.00	896.00	0.0	FLOATS HELD .5 BBL BACK
Event	24	End Job	9/23/2017	18:02:27	COM5	8.35	0.00	0.00	0.0	GOOD RETURNS THROUGH OUT JOB, 25 BBLs CEMENT TO SURFACE
Event	25	Post-Job Safety Meeting (Pre Rig-Down)	9/23/2017	18:07:00	USER					ALL HES PRESENT
Event	26	Rig-Down Completed	9/23/2017	18:30:00	USER					
Event	27	Pre-Convoy Safety Meeting	9/23/2017	18:50:00	USER					ALL HES PRESENT
Event	28	Crew Leave Location	9/23/2017	19:00:00	USER					THANK YOU FOR CHOOSING HALLIBURTON, ANDREW BRENNECKE AND CREW

TEP - SR 42-12 - 9.625" SURFACE



- ① Call Out
- ② Pre-Convoy Safety Meeting
- ③ Crew Leave Yard
- ④ Arrive at Location from Service Center
- ⑤ Assessment Of Location Safety Meeting
- ⑥ Pre-Rig Up Safety Meeting
- ⑦ Rig-Up Completed
- ⑧ Pre-Job Safety Meeting
- ⑨ Other
- ⑩ Start Job
- ⑪ Prime Pumps
- ⑫ Test Lines
- ⑬ Pump Water
- ⑭ Check weight
- ⑮
- ⑯

TEP - SR 42-12 - 9.625" SURFACE

