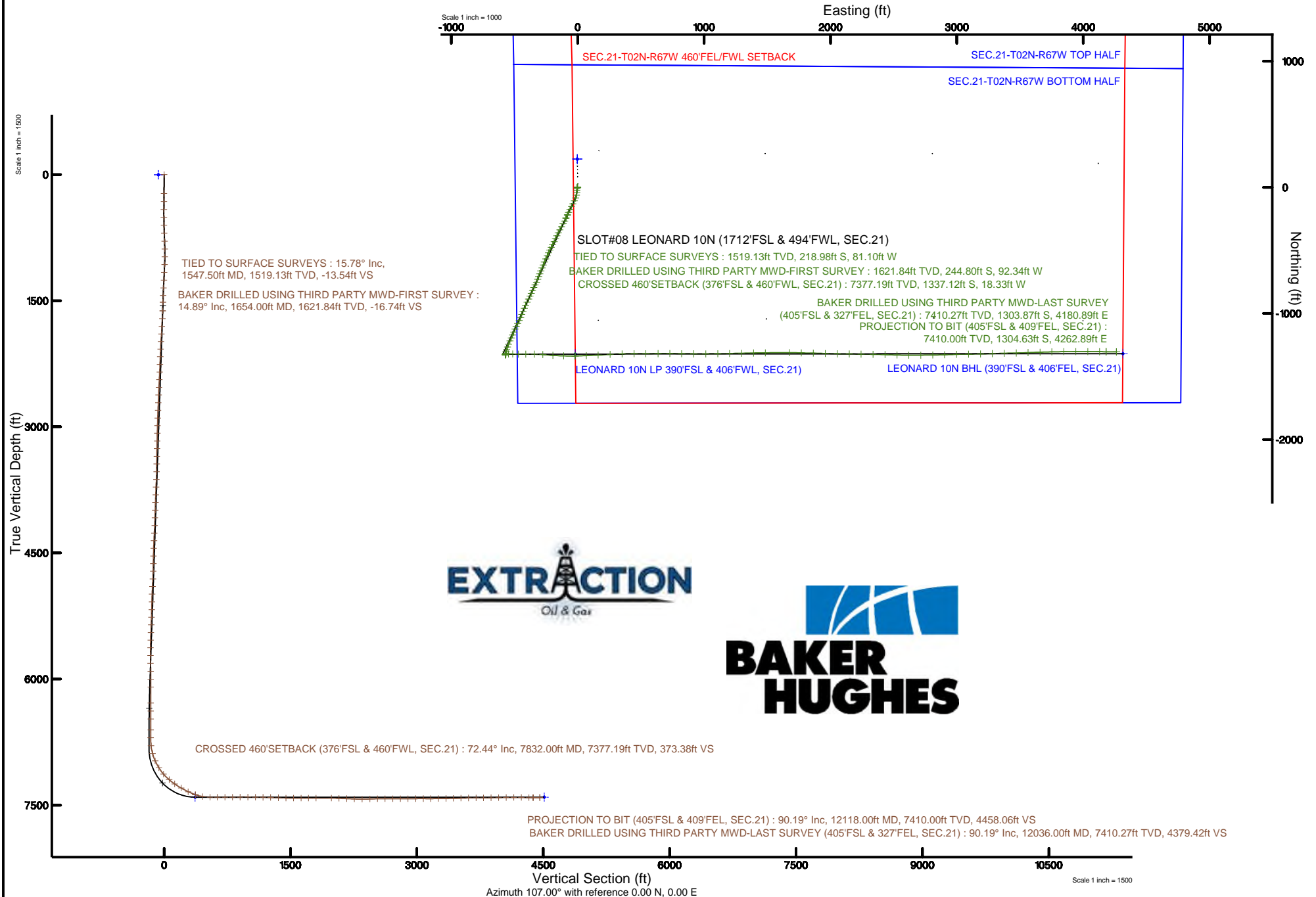


EXTRACTION OIL & GAS

Location: COLORADO Slot: SLOT#08 LEONARD 10N (1712'FSL & 494'FWL, SEC.21)
Field: WELD COUNTY (NAD83/TRUE NORTH) Well: LEONARD 10N
Facility: SEC.21-T02N-R67W Wellbore: LEONARD 10N PWB

Plot reference wellpath is LEONARD 10N PWP (REV-A.0)	Grid System: NAD83 / Lambert Colorado SP, Northern Zone (501), US feet
True vertical depths are referenced to CYCLONE 37 (28KB) (RKB)	North Reference: True north
Measured depths are referenced to CYCLONE 37 (28KB) (RKB)	Scale: True distance
CYCLONE 37 (28KB) (RKB) to Mean Sea Level: 5032 feet	Depths are in feet
Mean Sea Level to Mud line (At Slot: SLOT#08 LEONARD 10N (1712'FSL & 494'FWL, SEC.21)): 0 feet	Created by: ingnjamr on 2017-10-05
Coordinates are in feet referenced to Slot	Database: WA_DEN_Denver_Defn





Actual Wellpath Report

LEONARD 10N AWP

Page 1 of 7



REFERENCE WELLPATH IDENTIFICATION			
Operator	EXTRACTION OIL & GAS	Slot	SLOT#08 LEONARD 10N (1712'FSL & 494'FWL, SEC.21)
Area	COLORADO	Well	LEONARD 10N
Field	WELD COUNTY (NAD83/TRUE NORTH)	Wellbore	LEONARD 10N AWB
Facility	SEC.21-T02N-R67W		

REPORT SETUP INFORMATION			
Projection System	NAD83 / Lambert Colorado SP, Northern Zone (501), US feet	Software System	WellArchitect® 5.1
North Reference	True	User	Ingmjmr
Scale	0.999959	Report Generated	10/5/2017 at 10:08:02 AM
Convergence at slot	0.39° East	Database/Source file	WA_DEN_Denver_Defn/LEONARD_10N_AWP.xml

WELLPATH LOCATION						
	Local coordinates		Grid coordinates		Geographic coordinates	
	North[ft]	East[ft]	Easting[US ft]	Northing[US ft]	Latitude	Longitude
Slot Location	-223.68	3.08	3166876.89	1287553.14	40°07'16.266"N	104°54'11.783"W
Facility Reference Pt			3166872.30	1287776.78	40°07'18.476"N	104°54'11.822"W
Field Reference Pt			3185481.27	1419166.81	40°28'55.560"N	104°49'59.556"W

WELLPATH DATUM			
Calculation method	Minimum curvature	CYCLONE 37 (28'KB) (RKB) to Facility Vertical Datum	5032.00ft
Horizontal Reference Pt	Slot	CYCLONE 37 (28'KB) (RKB) to Mean Sea Level	5032.00ft
Vertical Reference Pt	CYCLONE 37 (28'KB) (RKB)	CYCLONE 37 (28'KB) (RKB) to Mud Line at Slot (SLOT#08 LEONARD 10N (1712'FSL & 494'FWL, SEC.21))	5032.00ft
MD Reference Pt	CYCLONE 37 (28'KB) (RKB)	Section Origin	N 0.00, E 0.00 ft
Field Vertical Reference	Mean Sea Level	Section Azimuth	107.02°



Actual Wellpath Report

LEONARD 10N AWP

Page 2 of 7



REFERENCE WELLPATH IDENTIFICATION

Operator	EXTRACTION OIL & GAS	Slot	SLOT#08 LEONARD 10N (1712'FSL & 494'FWL, SEC.21)
Area	COLORADO	Well	LEONARD 10N
Field	WELD COUNTY (NAD83/TRUE NORTH)	Wellbore	LEONARD 10N AWB
Facility	SEC.21-T02N-R67W		

WELLPATH DATA (112 stations)

MD [ft]	Inclination [°]	Azimuth [°]	TVD [ft]	Vert Sect [ft]	North [ft]	East [ft]	Latitude	Longitude	DLS [°/100ft]	Comments
1547.50	15.780	204.580	1519.13	-13.47	-218.98	-81.10	40°07'14.102"N	104°54'12.827"W	1.08	TIED TO SURFACE SURVEYS
1654.00	14.890	202.410	1621.84	-16.66	-244.80	-92.34	40°07'13.847"N	104°54'12.971"W	0.99	BAKER DRILLED USING THIRD PARTY MWD-FIRST SURVEY
1749.00	15.690	209.820	1713.48	-20.65	-267.23	-103.38	40°07'13.625"N	104°54'13.114"W	2.22	
1844.00	14.720	208.540	1805.15	-25.91	-288.98	-115.54	40°07'13.410"N	104°54'13.270"W	1.08	
1938.00	17.720	208.940	1895.40	-31.25	-312.00	-128.17	40°07'13.183"N	104°54'13.433"W	3.19	
2033.00	17.100	207.530	1986.05	-36.79	-337.03	-141.62	40°07'12.935"N	104°54'13.606"W	0.79	
2127.00	16.480	205.940	2076.04	-41.38	-361.28	-153.84	40°07'12.696"N	104°54'13.763"W	0.82	
2222.00	15.690	205.410	2167.32	-45.34	-385.00	-165.25	40°07'12.461"N	104°54'13.910"W	0.85	
2316.00	14.490	204.130	2258.08	-48.66	-407.21	-175.51	40°07'12.242"N	104°54'14.042"W	1.32	
2411.00	16.790	207.130	2349.56	-52.54	-430.28	-186.63	40°07'12.014"N	104°54'14.185"W	2.57	
2505.00	15.690	207.130	2439.81	-57.15	-453.67	-198.61	40°07'11.783"N	104°54'14.339"W	1.17	
2600.00	14.100	207.440	2531.61	-61.50	-475.37	-209.80	40°07'11.568"N	104°54'14.483"W	1.68	
2694.00	15.380	205.150	2622.52	-65.34	-496.82	-220.38	40°07'11.356"N	104°54'14.620"W	1.50	
2789.00	14.320	206.420	2714.34	-69.04	-518.75	-230.96	40°07'11.140"N	104°54'14.756"W	1.17	
2883.00	17.100	202.940	2804.82	-72.37	-541.89	-241.52	40°07'10.911"N	104°54'14.892"W	3.12	
2978.00	17.190	203.910	2895.60	-75.49	-567.59	-252.66	40°07'10.657"N	104°54'15.035"W	0.32	
3073.00	16.000	202.810	2986.64	-78.50	-592.49	-263.42	40°07'10.411"N	104°54'15.174"W	1.30	
3167.00	14.410	200.120	3077.35	-80.44	-615.41	-272.47	40°07'10.184"N	104°54'15.290"W	1.85	
3262.00	16.700	202.810	3168.87	-82.46	-639.10	-281.83	40°07'09.950"N	104°54'15.411"W	2.53	
3357.00	15.380	201.620	3260.17	-84.85	-663.39	-291.76	40°07'09.710"N	104°54'15.538"W	1.43	
3451.00	13.610	200.920	3351.17	-86.60	-685.32	-300.30	40°07'09.494"N	104°54'15.648"W	1.89	
3546.00	15.600	199.640	3443.10	-87.95	-707.79	-308.59	40°07'09.272"N	104°54'15.755"W	2.12	
3640.00	13.700	201.140	3534.04	-89.33	-730.08	-316.85	40°07'09.051"N	104°54'15.861"W	2.06	
3735.00	15.690	204.620	3625.93	-91.84	-752.25	-326.26	40°07'08.832"N	104°54'15.982"W	2.29	
3830.00	14.490	207.040	3717.65	-95.60	-774.52	-337.02	40°07'08.612"N	104°54'16.121"W	1.43	
3924.00	13.610	205.540	3808.84	-99.29	-794.97	-347.13	40°07'08.410"N	104°54'16.251"W	1.01	
4019.00	16.310	203.740	3900.61	-102.51	-817.27	-357.32	40°07'08.190"N	104°54'16.382"W	2.88	
4113.00	14.580	202.410	3991.21	-105.17	-840.29	-367.15	40°07'07.962"N	104°54'16.509"W	1.88	
4208.00	15.110	205.410	4083.04	-108.10	-862.53	-377.02	40°07'07.742"N	104°54'16.636"W	0.98	
4303.00	17.280	205.230	4174.27	-111.92	-886.48	-388.35	40°07'07.506"N	104°54'16.782"W	2.28	



Actual Wellpath Report

LEONARD 10N AWP

Page 3 of 7



REFERENCE WELLPATH IDENTIFICATION

Operator	EXTRACTION OIL & GAS	Slot	SLOT#08 LEONARD 10N (1712'FSL & 494'FWL, SEC.21)
Area	COLORADO	Well	LEONARD 10N
Field	WELD COUNTY (NAD83/TRUE NORTH)	Wellbore	LEONARD 10N AWB
Facility	SEC.21-T02N-R67W		

WELLPATH DATA (112 stations)

MD [ft]	Inclination [°]	Azimuth [°]	TVD [ft]	Vert Sect [ft]	North [ft]	East [ft]	Latitude	Longitude	DLS [°/100ft]	Comments
4397.00	16.000	206.340	4264.33	-116.02	-910.72	-400.05	40°07'07.266"N	104°54'16.932"W	1.40	
4492.00	17.720	205.010	4355.24	-120.15	-935.56	-411.97	40°07'07.021"N	104°54'17.086"W	1.86	
4586.00	14.720	204.050	4445.49	-123.60	-959.43	-422.89	40°07'06.785"N	104°54'17.226"W	3.20	
4681.00	15.600	201.310	4537.19	-126.03	-982.36	-432.45	40°07'06.558"N	104°54'17.349"W	1.19	
4776.00	17.280	200.830	4628.30	-127.93	-1007.45	-442.11	40°07'06.310"N	104°54'17.474"W	1.77	
4870.00	16.310	200.210	4718.29	-129.59	-1032.88	-451.63	40°07'06.059"N	104°54'17.596"W	1.05	
4965.00	15.910	207.750	4809.57	-132.76	-1056.93	-462.31	40°07'05.821"N	104°54'17.734"W	2.24	
5059.00	16.790	208.320	4899.77	-137.82	-1080.28	-474.75	40°07'05.591"N	104°54'17.894"W	0.95	
5154.00	14.490	205.850	4991.24	-142.34	-1103.06	-486.44	40°07'05.365"N	104°54'18.044"W	2.52	
5248.00	13.700	199.810	5082.42	-144.69	-1124.11	-495.34	40°07'05.157"N	104°54'18.159"W	1.78	
5343.00	16.880	204.530	5174.05	-147.04	-1147.25	-504.88	40°07'04.929"N	104°54'18.282"W	3.59	
5438.00	15.110	202.330	5265.37	-149.99	-1171.26	-515.31	40°07'04.691"N	104°54'18.416"W	1.97	
5532.00	15.110	203.740	5356.12	-152.56	-1193.80	-524.90	40°07'04.469"N	104°54'18.539"W	0.39	
5627.00	17.810	205.720	5447.22	-156.21	-1218.23	-536.19	40°07'04.227"N	104°54'18.685"W	2.90	
5722.00	16.620	202.020	5537.96	-159.59	-1243.92	-547.59	40°07'03.973"N	104°54'18.831"W	1.70	
5816.00	13.700	198.620	5628.68	-161.08	-1266.93	-556.19	40°07'03.746"N	104°54'18.942"W	3.25	
5910.00	10.780	196.640	5720.53	-161.33	-1285.91	-562.26	40°07'03.558"N	104°54'19.020"W	3.14	
6005.00	8.710	192.240	5814.16	-160.67	-1301.45	-566.33	40°07'03.405"N	104°54'19.072"W	2.31	
6100.00	6.500	186.810	5908.32	-159.12	-1313.82	-568.49	40°07'03.283"N	104°54'19.100"W	2.44	
6194.00	4.420	198.710	6001.89	-158.28	-1322.54	-570.29	40°07'03.196"N	104°54'19.123"W	2.51	
6289.00	1.020	201.310	6096.77	-158.46	-1326.80	-571.77	40°07'03.154"N	104°54'19.142"W	3.58	
6478.00	0.220	162.620	6285.76	-158.38	-1328.71	-572.27	40°07'03.135"N	104°54'19.149"W	0.45	
6573.00	0.620	10.150	6380.76	-158.34	-1328.38	-572.13	40°07'03.139"N	104°54'19.147"W	0.86	
6668.00	0.710	356.030	6475.75	-158.61	-1327.28	-572.08	40°07'03.150"N	104°54'19.146"W	0.20	
6797.00	1.100	359.340	6604.73	-159.27	-1325.25	-572.15	40°07'03.170"N	104°54'19.147"W	0.30	
6891.00	1.410	358.810	6698.71	-159.91	-1323.19	-572.18	40°07'03.190"N	104°54'19.148"W	0.33	
6986.00	6.810	86.210	6793.48	-155.00	-1321.65	-566.58	40°07'03.205"N	104°54'19.076"W	7.25	
7080.00	16.390	88.320	6885.45	-137.19	-1320.89	-547.72	40°07'03.213"N	104°54'18.833"W	10.20	
7175.00	24.480	93.440	6974.40	-105.30	-1321.68	-514.61	40°07'03.205"N	104°54'18.407"W	8.71	
7269.00	33.190	90.620	7056.67	-61.60	-1323.13	-469.36	40°07'03.191"N	104°54'17.824"W	9.38	



Actual Wellpath Report

LEONARD 10N AWP

Page 4 of 7



REFERENCE WELLPATH IDENTIFICATION

Operator	EXTRACTION OIL & GAS	Slot	SLOT#08 LEONARD 10N (1712'FSL & 494'FWL, SEC.21)
Area	COLORADO	Well	LEONARD 10N
Field	WELD COUNTY (NAD83/TRUE NORTH)	Wellbore	LEONARD 10N AWB
Facility	SEC.21-T02N-R67W		

WELLPATH DATA (112 stations) † = interpolated/extrapolated station

MD [ft]	Inclination [°]	Azimuth [°]	TVD [ft]	Vert Sect [ft]	North [ft]	East [ft]	Latitude	Longitude	DLS [°/100ft]	Comments
7364.00	42.420	89.120	7131.65	-6.04	-1322.92	-411.19	40°07'03.193"N	104°54'17.076"W	9.76	
7459.00	50.600	91.410	7196.98	59.92	-1323.33	-342.34	40°07'03.189"N	104°54'16.189"W	8.79	
7543.00	55.680	93.830	7247.36	125.00	-1326.45	-275.23	40°07'03.158"N	104°54'15.326"W	6.47	
7637.00	61.200	94.230	7296.54	203.02	-1332.08	-195.37	40°07'03.102"N	104°54'14.297"W	5.88	
7732.00	64.120	91.940	7340.17	284.90	-1336.60	-111.12	40°07'03.058"N	104°54'13.213"W	3.75	
7827.00	71.980	88.940	7375.66	369.25	-1337.21	-23.09	40°07'03.052"N	104°54'12.080"W	8.78	
7832.00†	72.438	88.840	7377.19	373.78	-1337.12	-18.33	40°07'03.052"N	104°54'12.019"W	9.36	CROSSED 460'SETBACK (376'FSL & 460'FWL, SEC.21)
7921.00	80.600	87.130	7397.92	455.52	-1334.06	68.09	40°07'03.083"N	104°54'10.906"W	9.36	
8016.00	89.220	87.840	7406.34	544.61	-1329.91	162.54	40°07'03.124"N	104°54'09.691"W	9.10	
8110.00	90.190	85.940	7406.83	632.87	-1324.81	256.39	40°07'03.174"N	104°54'08.483"W	2.27	
8205.00	90.590	89.250	7406.18	722.45	-1320.83	351.29	40°07'03.213"N	104°54'07.261"W	3.51	
8300.00	90.010	89.430	7405.68	812.96	-1319.73	446.28	40°07'03.224"N	104°54'06.038"W	0.64	
8394.00	90.720	89.730	7405.08	902.64	-1319.04	540.28	40°07'03.231"N	104°54'04.828"W	0.82	
8489.00	89.620	89.650	7404.80	993.33	-1318.53	635.28	40°07'03.236"N	104°54'03.606"W	1.16	
8583.00	88.820	90.220	7406.08	1083.17	-1318.42	729.27	40°07'03.237"N	104°54'02.396"W	1.04	
8677.00	90.010	90.530	7407.04	1173.23	-1319.04	823.26	40°07'03.231"N	104°54'01.186"W	1.31	
8772.00	87.800	91.230	7408.86	1264.46	-1320.50	918.22	40°07'03.217"N	104°53'59.964"W	2.44	
8867.00	87.890	89.030	7412.43	1355.29	-1320.71	1013.15	40°07'03.214"N	104°53'58.742"W	2.32	
8962.00	88.510	89.730	7415.41	1445.78	-1319.69	1108.09	40°07'03.224"N	104°53'57.520"W	0.98	
9056.00	89.620	88.240	7416.95	1535.15	-1318.02	1202.06	40°07'03.241"N	104°53'56.310"W	1.98	
9151.00	90.810	88.940	7416.59	1625.28	-1315.68	1297.03	40°07'03.264"N	104°53'55.088"W	1.45	
9245.00	89.310	88.810	7416.49	1714.60	-1313.84	1391.01	40°07'03.282"N	104°53'53.878"W	1.60	
9339.00	90.100	89.430	7416.97	1804.05	-1312.39	1485.00	40°07'03.296"N	104°53'52.668"W	1.07	
9529.00	90.190	89.910	7416.49	1985.41	-1311.30	1674.99	40°07'03.307"N	104°53'50.223"W	0.26	
9623.00	87.500	91.850	7418.39	2075.67	-1312.74	1768.95	40°07'03.293"N	104°53'49.013"W	3.53	
9719.00	87.720	91.010	7422.39	2168.06	-1315.14	1864.84	40°07'03.269"N	104°53'47.779"W	0.90	
9813.00	87.320	92.110	7426.46	2258.58	-1317.69	1958.71	40°07'03.244"N	104°53'46.571"W	1.24	
9908.00	90.190	91.140	7428.52	2350.14	-1320.38	2053.64	40°07'03.217"N	104°53'45.349"W	3.19	
10003.00	92.000	90.350	7426.71	2441.31	-1321.62	2148.61	40°07'03.205"N	104°53'44.126"W	2.08	
10097.00	91.300	90.840	7424.00	2531.44	-1322.60	2242.56	40°07'03.195"N	104°53'42.917"W	0.91	



Actual Wellpath Report

LEONARD 10N AWP

Page 5 of 7



REFERENCE WELLPATH IDENTIFICATION

Operator	EXTRACTION OIL & GAS	Slot	SLOT#08 LEONARD 10N (1712'FSL & 494'FWL, SEC.21)
Area	COLORADO	Well	LEONARD 10N
Field	WELD COUNTY (NAD83/TRUE NORTH)	Wellbore	LEONARD 10N AWB
Facility	SEC.21-T02N-R67W		

WELLPATH DATA (112 stations)

MD [ft]	Inclination [°]	Azimuth [°]	TVD [ft]	Vert Sect [ft]	North [ft]	East [ft]	Latitude	Longitude	DLS [°/100ft]	Comments
10192.00	90.190	90.840	7422.77	2622.67	-1323.99	2337.54	40°07'03.181"N	104°53'41.695"W	1.17	
10287.00	89.090	92.370	7423.36	2714.25	-1326.65	2432.50	40°07'03.155"N	104°53'40.472"W	1.98	
10381.00	90.500	91.410	7423.70	2804.99	-1329.75	2526.45	40°07'03.124"N	104°53'39.263"W	1.81	
10475.00	90.010	90.130	7423.28	2895.23	-1331.01	2620.43	40°07'03.111"N	104°53'38.053"W	1.46	
10570.00	90.810	89.430	7422.60	2985.96	-1330.65	2715.43	40°07'03.115"N	104°53'36.831"W	1.12	
10664.00	89.620	89.120	7422.25	3075.49	-1329.46	2809.42	40°07'03.127"N	104°53'35.621"W	1.31	
10758.00	90.100	88.320	7422.48	3164.73	-1327.36	2903.39	40°07'03.147"N	104°53'34.411"W	0.99	
10853.00	91.300	88.020	7421.32	3254.63	-1324.32	2998.34	40°07'03.177"N	104°53'33.189"W	1.30	
10948.00	90.190	89.650	7420.08	3344.88	-1322.39	3093.31	40°07'03.196"N	104°53'31.967"W	2.08	
11042.00	90.720	89.250	7419.34	3434.49	-1321.49	3187.30	40°07'03.205"N	104°53'30.757"W	0.71	
11136.00	92.310	87.620	7416.85	3523.55	-1318.93	3281.22	40°07'03.230"N	104°53'29.548"W	2.42	
11230.00	90.280	88.810	7414.73	3612.51	-1316.00	3375.15	40°07'03.259"N	104°53'28.339"W	2.50	
11325.00	90.010	88.630	7414.49	3702.70	-1313.88	3470.12	40°07'03.280"N	104°53'27.116"W	0.34	
11419.00	90.810	87.220	7413.81	3791.53	-1310.47	3564.06	40°07'03.313"N	104°53'25.907"W	1.72	
11513.00	90.590	89.030	7412.66	3880.46	-1307.40	3657.99	40°07'03.343"N	104°53'24.698"W	1.94	
11607.00	91.690	88.150	7410.79	3969.62	-1305.09	3751.94	40°07'03.366"N	104°53'23.489"W	1.50	
11702.00	89.790	89.910	7409.57	4059.96	-1303.48	3846.92	40°07'03.382"N	104°53'22.266"W	2.73	
11796.00	90.720	89.120	7409.15	4149.60	-1302.68	3940.91	40°07'03.390"N	104°53'21.056"W	1.30	
11891.00	89.000	90.920	7409.38	4240.45	-1302.72	4035.90	40°07'03.389"N	104°53'19.834"W	2.62	
11985.00	89.880	90.130	7410.30	4330.57	-1303.58	4129.89	40°07'03.381"N	104°53'18.624"W	1.26	
12036.00	90.190	90.530	7410.27	4379.43	-1303.87	4180.89	40°07'03.378"N	104°53'17.967"W	0.99	BAKER DRILLED USING THIRD PARTY MWD-LAST SURVEY (405'FSL & 327'FEL, SEC.21)
12118.00	90.190	90.530	7410.00	4458.06	-1304.63	4262.89	40°07'03.370"N	104°53'16.912"W	0.00	PROJECTION TO BIT (405'FSL & 409'FEL, SEC.21)



Actual Wellpath Report

LEONARD 10N AWP

Page 6 of 7



REFERENCE WELLPATH IDENTIFICATION

Operator	EXTRACTION OIL & GAS	Slot	SLOT#08 LEONARD 10N (1712'FSL & 494'FWL, SEC.21)
Area	COLORADO	Well	LEONARD 10N
Field	WELD COUNTY (NAD83/TRUE NORTH)	Wellbore	LEONARD 10N AWB
Facility	SEC.21-T02N-R67W		

TARGETS

Name	TVD [ft]	North [ft]	East [ft]	Grid East [US ft]	Grid North [US ft]	Latitude	Longitude	Shape
SEC.21-T02N-R67W BOTTOM HALF	3.00	223.68	-3.08	3166872.30	1287776.78	40°07'18.476"N	104°54'11.822"W	polygon
SEC.21-T02N-R67W TOP HALF	3.00	223.68	-3.08	3166872.30	1287776.78	40°07'18.476"N	104°54'11.822"W	polygon
LEONARD 10N BHL (390'FSL & 406'FEL, SEC.21)	7405.00	-1318.78	4313.85	3171199.33	1286263.48	40°07'03.230"N	104°53'16.256"W	point
LEONARD 10N LP 390'FSL & 406'FWL, SEC.21)	7405.00	-1322.39	-19.05	3166866.73	1286230.71	40°07'03.198"N	104°54'12.028"W	point
SEC.21-T02N-R67W 460'FEL/FWL SETBACK	7463.00	223.68	-3.08	3166872.30	1287776.78	40°07'18.476"N	104°54'11.822"W	polygon

WELLPATH COMPOSITION - Ref Wellbore: LEONARD 10N AWB Ref Wellpath: LEONARD 10N AWP

Start MD [ft]	End MD [ft]	Positional Uncertainty Model	Log Name/Comment	Wellbore
0.00	1547.50	ISCWSA MWD, Rev. 4 (Standard)	TOTAL SURVEYS <224.50-1547.50>	LEONARD 10N AWB
1547.50	12036.00	ISCWSA MWD, Rev. 4 (Standard)	BAKER DRILLED USING THIRD PARTY MWD <1654-12036>	LEONARD 10N AWB
12036.00	12118.00	Blind Drilling (std)	Projection to bit	LEONARD 10N AWB



Actual Wellpath Report

LEONARD 10N AWP

Page 7 of 7



REFERENCE WELLPATH IDENTIFICATION

Operator	EXTRACTION OIL & GAS	Slot	SLOT#08 LEONARD 10N (1712'FSL & 494'FWL, SEC.21)
Area	COLORADO	Well	LEONARD 10N
Field	WELD COUNTY (NAD83/TRUE NORTH)	Wellbore	LEONARD 10N AWB
Facility	SEC.21-T02N-R67W		

WELLPATH COMMENTS

MD [ft]	Inclination [°]	Azimuth [°]	TVD [ft]	Comment
1547.50	15.780	204.580	1519.13	TIED TO SURFACE SURVEYS
1654.00	14.890	202.410	1621.84	BAKER DRILLED USING THIRD PARTY MWD-FIRST SURVEY
7832.00	72.438	88.840	7377.19	CROSSED 460'SETBACK (376'FSL & 460'FWL, SEC.21)
12036.00	90.190	90.530	7410.27	BAKER DRILLED USING THIRD PARTY MWD-LAST SURVEY (405'FSL & 327'FEL, SEC.21)
12118.00	90.190	90.530	7410.00	PROJECTION TO BIT (405'FSL & 409'FEL, SEC.21)