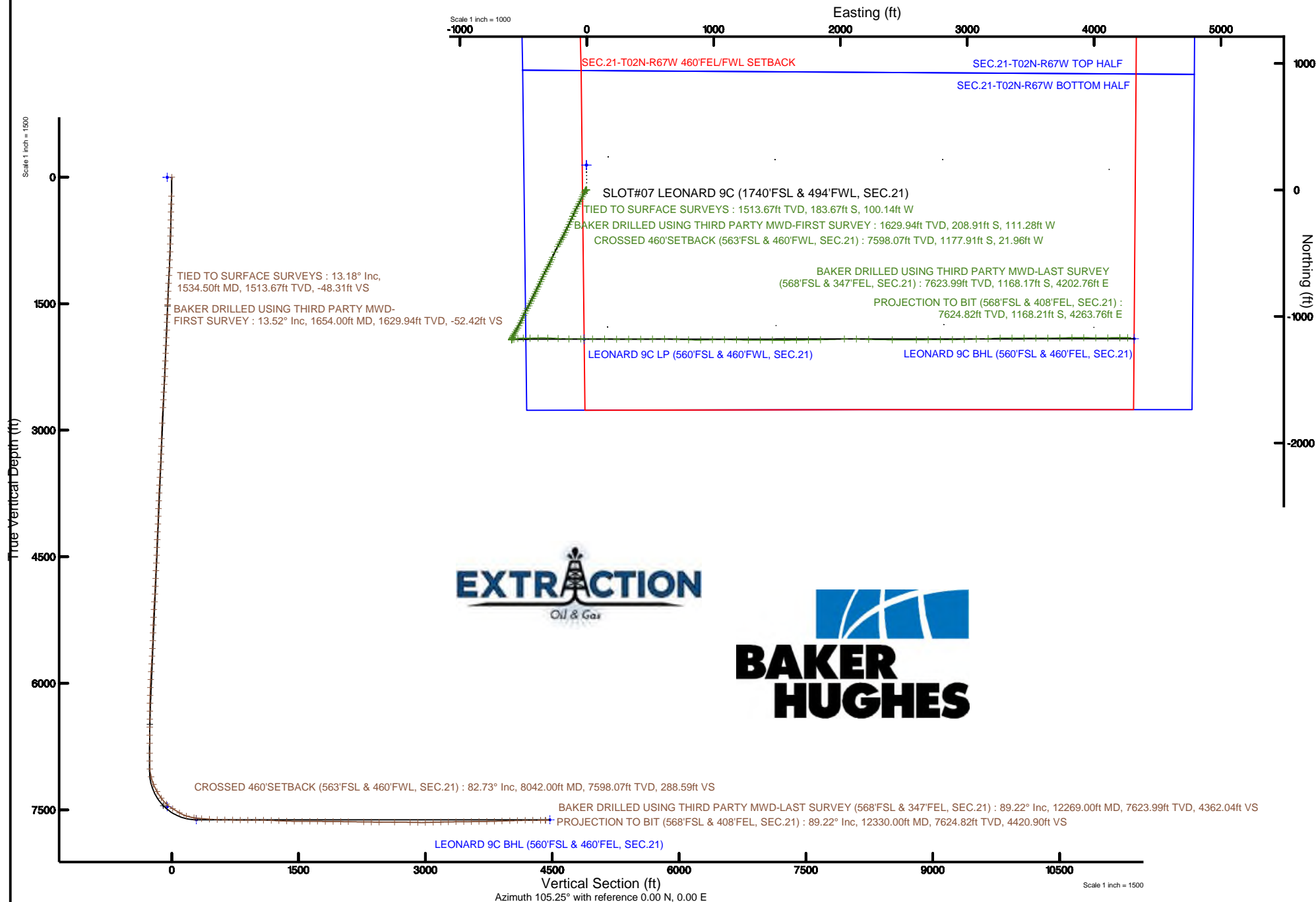


# EXTRACTION OIL & GAS

Location: COLORADO Slot: SLOT#07 LEONARD 9C (1740'FSL & 494'FWL, SEC.21)  
Field: WELD COUNTY (NAD83/TRUE NORTH) Well: LEONARD 9C  
Facility: SEC.21-T02N-R67W Wellbore: LEONARD 9C PWB

Plot reference wellpath is LEONARD 9C PWP (REV-A.0)	Grid System: NAD83 / Lambert Colorado SP, Northern Zone (501), US feet
True vertical depths are referenced to CYCLONE 37 (28'KB) (RKB)	North Reference: True north
Measured depths are referenced to CYCLONE 37 (28'KB) (RKB)	Scale: True distance
CYCLONE 37 (28'KB) (RKB) to Mean Sea Level: 5032 feet	Depths are in feet
Mean Sea Level to Mud line (At Slot: SLOT#07 LEONARD 9C (1740'FSL & 494'FWL, SEC.21)): 0 feet	Created by: ingmjamm on 2017-10-05
Coordinates are in feet referenced to Slot	Database: WA_DEN_Denver_Defn





# Actual Wellpath Report

LEONARD 9C AWP

Page 1 of 7



REFERENCE WELLPATH IDENTIFICATION			
Operator	EXTRACTION OIL & GAS	Slot	SLOT#07 LEONARD 9C (1740'FSL & 494'FWL, SEC.21)
Area	COLORADO	Well	LEONARD 9C
Field	WELD COUNTY (NAD83/TRUE NORTH)	Wellbore	LEONARD 9C AWP
Facility	SEC.21-T02N-R67W		

REPORT SETUP INFORMATION			
Projection System	NAD83 / Lambert Colorado SP, Northern Zone (501), US feet	Software System	WellArchitect® 5.1
North Reference	True	User	Ingmjmr
Scale	0.999959	Report Generated	10/5/2017 at 10:13:39 AM
Convergence at slot	0.39° East	Database/Source file	WA_DEN_Denver_Defn/LEONARD_9C_AWP.xml

WELLPATH LOCATION						
	Local coordinates		Grid coordinates		Geographic coordinates	
	North[ft]	East[ft]	Easting[US ft]	Northing[US ft]	Latitude	Longitude
Slot Location	-195.99	2.80	3166876.42	1287580.83	40°07'16.540"N	104°54'11.786"W
Facility Reference Pt			3166872.30	1287776.78	40°07'18.476"N	104°54'11.822"W
Field Reference Pt			3185481.27	1419166.81	40°28'55.560"N	104°49'59.556"W

WELLPATH DATUM			
Calculation method	Minimum curvature	CYCLONE 37 (28'KB) (RKB) to Facility Vertical Datum	5032.00ft
Horizontal Reference Pt	Slot	CYCLONE 37 (28'KB) (RKB) to Mean Sea Level	5032.00ft
Vertical Reference Pt	CYCLONE 37 (28'KB) (RKB)	CYCLONE 37 (28'KB) (RKB) to Mud Line at Slot (SLOT#07 LEONARD 9C (1740'FSL & 494'FWL, SEC.21))	5032.00ft
MD Reference Pt	CYCLONE 37 (28'KB) (RKB)	Section Origin	N 0.00, E 0.00 ft
Field Vertical Reference	Mean Sea Level	Section Azimuth	105.32°



# Actual Wellpath Report

LEONARD 9C AWP

Page 2 of 7



## REFERENCE WELLPATH IDENTIFICATION

Operator	EXTRACTION OIL & GAS	Slot	SLOT#07 LEONARD 9C (1740'FSL & 494'FWL, SEC.21)
Area	COLORADO	Well	LEONARD 9C
Field	WELD COUNTY (NAD83/TRUE NORTH)	Wellbore	LEONARD 9C AWB
Facility	SEC.21-T02N-R67W		

## WELLPATH DATA (111 stations)

MD [ft]	Inclination [°]	Azimuth [°]	TVD [ft]	Vert Sect [ft]	North [ft]	East [ft]	Latitude	Longitude	DLS [°/100ft]	Comments
1534.50	13.180	205.110	1513.67	-48.04	-183.67	-100.14	40°07'14.725"N	104°54'13.075"W	0.59	TIED TO SURFACE SURVEYS
1654.00	13.520	202.550	1629.94	-52.12	-208.91	-111.28	40°07'14.475"N	104°54'13.219"W	0.57	BAKER DRILLED USING THIRD PARTY MWD-FIRST SURVEY
1749.00	14.980	205.150	1722.02	-55.61	-230.28	-120.75	40°07'14.264"N	104°54'13.341"W	1.68	
1843.00	14.720	201.530	1812.88	-58.98	-252.39	-130.30	40°07'14.045"N	104°54'13.464"W	1.02	
1938.00	14.980	207.350	1904.71	-62.84	-274.52	-140.37	40°07'13.827"N	104°54'13.593"W	1.59	
2032.00	14.320	205.150	1995.65	-67.36	-295.84	-150.89	40°07'13.616"N	104°54'13.729"W	0.92	
2127.00	13.920	205.150	2087.78	-71.31	-316.81	-160.74	40°07'13.409"N	104°54'13.856"W	0.42	
2222.00	13.390	204.440	2180.10	-75.01	-337.17	-170.15	40°07'13.208"N	104°54'13.977"W	0.59	
2316.00	12.420	202.630	2271.72	-78.02	-356.41	-178.54	40°07'13.017"N	104°54'14.085"W	1.12	
2411.00	13.210	210.520	2364.36	-82.16	-375.19	-187.99	40°07'12.832"N	104°54'14.206"W	2.02	
2505.00	12.590	211.050	2455.99	-87.75	-393.22	-198.73	40°07'12.654"N	104°54'14.344"W	0.67	
2600.00	13.300	209.730	2548.58	-93.28	-411.58	-209.49	40°07'12.472"N	104°54'14.483"W	0.81	
2694.00	12.020	210.350	2640.29	-98.51	-429.42	-219.79	40°07'12.296"N	104°54'14.616"W	1.37	
2789.00	13.920	208.720	2732.86	-103.72	-447.98	-230.28	40°07'12.113"N	104°54'14.751"W	2.04	
2978.00	15.510	204.930	2915.66	-113.21	-490.84	-251.86	40°07'11.689"N	104°54'15.028"W	0.98	
3167.00	12.680	202.330	3098.95	-119.96	-532.95	-270.40	40°07'11.273"N	104°54'15.267"W	1.53	
3262.00	11.310	201.220	3191.88	-122.19	-551.28	-277.73	40°07'11.092"N	104°54'15.361"W	1.46	
3357.00	13.520	204.620	3284.65	-124.94	-570.06	-285.73	40°07'10.906"N	104°54'15.464"W	2.45	
3451.00	12.200	206.510	3376.29	-128.64	-588.94	-294.74	40°07'10.720"N	104°54'15.580"W	1.47	
3545.00	14.010	210.610	3467.84	-133.57	-607.62	-304.97	40°07'10.535"N	104°54'15.712"W	2.16	
3640.00	12.280	210.610	3560.35	-139.26	-626.21	-315.97	40°07'10.351"N	104°54'15.854"W	1.82	
3735.00	14.580	206.650	3652.75	-144.28	-645.60	-326.48	40°07'10.160"N	104°54'15.989"W	2.61	
3830.00	12.900	206.250	3745.03	-148.64	-665.80	-336.53	40°07'09.960"N	104°54'16.118"W	1.77	
3924.00	14.100	204.930	3836.43	-152.54	-685.59	-346.00	40°07'09.764"N	104°54'16.240"W	1.32	
4019.00	13.520	203.740	3928.68	-156.09	-706.25	-355.35	40°07'09.560"N	104°54'16.360"W	0.68	
4113.00	11.490	202.020	4020.45	-158.80	-724.99	-363.28	40°07'09.375"N	104°54'16.463"W	2.20	
4208.00	14.720	205.850	4112.96	-162.11	-744.63	-372.10	40°07'09.181"N	104°54'16.576"W	3.52	
4302.00	13.920	207.530	4204.04	-166.68	-765.40	-382.53	40°07'08.976"N	104°54'16.710"W	0.96	
4397.00	11.710	206.030	4296.67	-170.89	-784.20	-392.04	40°07'08.790"N	104°54'16.833"W	2.35	
4492.00	13.210	204.440	4389.43	-174.40	-802.75	-400.77	40°07'08.607"N	104°54'16.945"W	1.62	



# Actual Wellpath Report

LEONARD 9C AWP

Page 3 of 7



## REFERENCE WELLPATH IDENTIFICATION

Operator	EXTRACTION OIL & GAS	Slot	SLOT#07 LEONARD 9C (1740'FSL & 494'FWL, SEC.21)
Area	COLORADO	Well	LEONARD 9C
Field	WELD COUNTY (NAD83/TRUE NORTH)	Wellbore	LEONARD 9C AWB
Facility	SEC.21-T02N-R67W		

## WELLPATH DATA (111 stations)

MD [ft]	Inclination [°]	Azimuth [°]	TVD [ft]	Vert Sect [ft]	North [ft]	East [ft]	Latitude	Longitude	DLS [°/100ft]	Comments
4586.00	11.090	204.050	4481.32	-177.47	-820.78	-408.90	40°07'08.428"N	104°54'17.050"W	2.26	
4681.00	13.080	207.440	4574.21	-181.12	-838.67	-417.57	40°07'08.252"N	104°54'17.161"W	2.22	
4775.00	13.210	209.330	4665.75	-185.95	-857.47	-427.74	40°07'08.066"N	104°54'17.292"W	0.48	
4870.00	13.700	204.050	4758.14	-190.28	-877.21	-437.64	40°07'07.871"N	104°54'17.420"W	1.39	
4965.00	12.510	204.930	4850.67	-193.71	-896.81	-446.56	40°07'07.677"N	104°54'17.535"W	1.27	
5059.00	14.720	208.320	4942.02	-198.09	-916.56	-456.52	40°07'07.482"N	104°54'17.663"W	2.50	
5154.00	13.390	210.740	5034.18	-203.73	-936.64	-467.87	40°07'07.284"N	104°54'17.809"W	1.53	
5248.00	12.510	209.730	5125.78	-209.16	-954.84	-478.48	40°07'07.104"N	104°54'17.945"W	0.97	
5343.00	13.390	204.440	5218.37	-213.46	-973.79	-488.13	40°07'06.916"N	104°54'18.070"W	1.55	
5438.00	12.280	205.150	5310.99	-216.93	-992.95	-496.98	40°07'06.727"N	104°54'18.183"W	1.18	
5532.00	13.300	203.820	5402.66	-220.23	-1011.89	-505.59	40°07'06.540"N	104°54'18.294"W	1.13	
5627.00	12.110	200.520	5495.34	-222.75	-1031.22	-513.50	40°07'06.349"N	104°54'18.396"W	1.47	
5721.00	15.380	207.750	5586.64	-226.33	-1051.49	-522.76	40°07'06.149"N	104°54'18.515"W	3.92	
5816.00	13.390	207.750	5678.65	-231.41	-1072.38	-533.75	40°07'05.942"N	104°54'18.657"W	2.09	
5910.00	11.620	208.010	5770.42	-235.83	-1090.37	-543.27	40°07'05.764"N	104°54'18.779"W	1.88	
6005.00	11.800	215.330	5863.45	-241.26	-1106.74	-553.38	40°07'05.603"N	104°54'18.909"W	1.57	
6100.00	10.380	212.640	5956.67	-247.13	-1121.87	-563.61	40°07'05.453"N	104°54'19.041"W	1.59	
6194.00	8.880	207.440	6049.35	-251.17	-1135.44	-571.52	40°07'05.319"N	104°54'19.143"W	1.84	
6289.00	7.290	207.040	6143.40	-253.93	-1147.32	-577.64	40°07'05.202"N	104°54'19.222"W	1.67	
6383.00	5.610	204.440	6236.80	-255.87	-1156.82	-582.26	40°07'05.108"N	104°54'19.281"W	1.81	
6478.00	4.510	200.430	6331.43	-256.94	-1164.54	-585.48	40°07'05.031"N	104°54'19.323"W	1.22	
6573.00	3.800	200.430	6426.18	-257.55	-1171.00	-587.88	40°07'04.968"N	104°54'19.354"W	0.75	
6667.00	2.610	202.630	6520.03	-258.10	-1175.89	-589.79	40°07'04.919"N	104°54'19.378"W	1.27	
6762.00	2.210	200.030	6614.95	-258.53	-1179.61	-591.25	40°07'04.883"N	104°54'19.397"W	0.44	
6857.00	1.500	195.230	6709.90	-258.68	-1182.53	-592.21	40°07'04.854"N	104°54'19.409"W	0.76	
6975.00	0.880	213.340	6827.87	-258.96	-1184.78	-593.11	40°07'04.831"N	104°54'19.421"W	0.61	
7069.00	0.400	229.030	6921.87	-259.36	-1185.59	-593.76	40°07'04.823"N	104°54'19.429"W	0.54	
7164.00	3.890	76.120	7016.80	-256.73	-1185.04	-590.88	40°07'04.829"N	104°54'19.392"W	4.47	
7258.00	15.290	75.320	7109.33	-243.17	-1181.12	-575.74	40°07'04.868"N	104°54'19.197"W	12.13	
7353.00	24.700	80.920	7198.51	-214.18	-1174.80	-543.95	40°07'04.930"N	104°54'18.788"W	10.10	



# Actual Wellpath Report

LEONARD 9C AWP

Page 4 of 7



## REFERENCE WELLPATH IDENTIFICATION

Operator	EXTRACTION OIL & GAS	Slot	SLOT#07 LEONARD 9C (1740'FSL & 494'FWL, SEC.21)
Area	COLORADO	Well	LEONARD 9C
Field	WELD COUNTY (NAD83/TRUE NORTH)	Wellbore	LEONARD 9C AWB
Facility	SEC.21-T02N-R67W		

## WELLPATH DATA (111 stations) † = interpolated/extrapolated station

MD [ft]	Inclination [°]	Azimuth [°]	TVD [ft]	Vert Sect [ft]	North [ft]	East [ft]	Latitude	Longitude	DLS [°/100ft]	Comments
7448.00	30.090	90.920	7282.87	-172.99	-1172.04	-500.48	40°07'04.957"N	104°54'18.229"W	7.44	
7543.00	37.210	89.510	7361.91	-122.21	-1172.18	-447.88	40°07'04.956"N	104°54'17.551"W	7.54	
7637.00	48.920	88.020	7430.46	-60.83	-1170.71	-383.83	40°07'04.970"N	104°54'16.727"W	12.50	
7732.00	58.020	91.850	7486.96	12.71	-1170.77	-307.59	40°07'04.970"N	104°54'15.746"W	10.11	
7827.00	60.320	93.610	7535.65	92.32	-1174.67	-226.12	40°07'04.931"N	104°54'14.697"W	2.90	
7921.00	72.600	90.920	7573.13	176.08	-1177.98	-140.18	40°07'04.899"N	104°54'13.591"W	13.32	
8016.00	81.400	89.340	7594.48	265.31	-1178.16	-47.71	40°07'04.897"N	104°54'12.401"W	9.40	
8042.00†	82.730	89.535	7598.07	290.08	-1177.91	-21.96	40°07'04.899"N	104°54'12.069"W	5.17	CROSSED 460'SETBACK (563'FSL & 460'FWL, SEC.21)
8110.00	86.210	90.040	7604.62	355.28	-1177.66	45.71	40°07'04.902"N	104°54'11.198"W	5.17	
8205.00	85.510	90.440	7611.48	446.77	-1178.06	140.46	40°07'04.898"N	104°54'09.978"W	0.85	
8300.00	87.800	90.840	7617.02	538.50	-1179.12	235.29	40°07'04.887"N	104°54'08.758"W	2.45	
8394.00	89.620	90.130	7619.14	629.34	-1179.91	329.25	40°07'04.880"N	104°54'07.548"W	2.08	
8489.00	89.480	89.430	7619.88	720.86	-1179.55	424.25	40°07'04.883"N	104°54'06.326"W	0.75	
8583.00	89.880	89.250	7620.41	811.23	-1178.46	518.24	40°07'04.894"N	104°54'05.116"W	0.47	
8677.00	89.700	90.040	7620.75	901.73	-1177.88	612.24	40°07'04.900"N	104°54'03.906"W	0.86	
8772.00	89.220	92.420	7621.65	993.86	-1179.92	707.21	40°07'04.879"N	104°54'02.683"W	2.56	
8867.00	90.100	92.420	7622.21	1086.46	-1183.93	802.12	40°07'04.840"N	104°54'01.462"W	0.93	
8962.00	87.010	89.430	7624.61	1178.42	-1185.47	897.05	40°07'04.825"N	104°54'00.240"W	4.53	
9056.00	87.010	88.020	7629.51	1268.38	-1183.38	990.90	40°07'04.845"N	104°53'59.032"W	1.50	
9151.00	88.510	90.750	7633.22	1359.65	-1182.36	1085.81	40°07'04.855"N	104°53'57.810"W	3.28	
9245.00	88.200	91.720	7635.92	1450.78	-1184.39	1179.75	40°07'04.835"N	104°53'56.601"W	1.08	
9339.00	90.590	90.440	7636.92	1541.88	-1186.16	1273.72	40°07'04.818"N	104°53'55.391"W	2.88	
9434.00	89.880	90.040	7636.53	1633.61	-1186.55	1368.72	40°07'04.814"N	104°53'54.169"W	0.86	
9529.00	89.700	90.440	7636.87	1725.33	-1186.95	1463.71	40°07'04.810"N	104°53'52.946"W	0.46	
9623.00	89.090	89.910	7637.87	1816.06	-1187.24	1557.71	40°07'04.807"N	104°53'51.736"W	0.86	
9719.00	89.620	89.120	7638.95	1908.43	-1186.43	1653.70	40°07'04.815"N	104°53'50.500"W	0.99	
9813.00	89.310	89.340	7639.82	1998.74	-1185.16	1747.68	40°07'04.827"N	104°53'49.291"W	0.40	
9908.00	89.170	88.810	7641.08	2089.94	-1183.63	1842.66	40°07'04.842"N	104°53'48.068"W	0.58	
10097.00	89.220	87.750	7643.74	2270.62	-1177.96	2031.56	40°07'04.898"N	104°53'45.637"W	0.56	
10192.00	89.480	92.250	7644.82	2362.21	-1177.96	2126.53	40°07'04.898"N	104°53'44.414"W	4.74	



# Actual Wellpath Report

LEONARD 9C AWP

Page 5 of 7



## REFERENCE WELLPATH IDENTIFICATION

Operator	EXTRACTION OIL & GAS	Slot	SLOT#07 LEONARD 9C (1740'FSL & 494'FWL, SEC.21)
Area	COLORADO	Well	LEONARD 9C
Field	WELD COUNTY (NAD83/TRUE NORTH)	Wellbore	LEONARD 9C AWB
Facility	SEC.21-T02N-R67W		

## WELLPATH DATA (111 stations)

MD [ft]	Inclination [°]	Azimuth [°]	TVD [ft]	Vert Sect [ft]	North [ft]	East [ft]	Latitude	Longitude	DLS [°/100ft]	Comments
10287.00	89.000	91.320	7646.08	2454.56	-1180.92	2221.47	40°07'04.869"N	104°53'43.192"W	1.10	
10475.00	90.500	90.750	7646.90	2636.74	-1184.31	2409.43	40°07'04.835"N	104°53'40.773"W	0.85	
10664.00	88.910	89.490	7647.87	2819.11	-1184.71	2598.42	40°07'04.831"N	104°53'38.340"W	1.07	
10758.00	88.690	89.160	7649.84	2909.45	-1183.60	2692.39	40°07'04.842"N	104°53'37.130"W	0.42	
10853.00	91.520	90.130	7649.67	3000.91	-1183.01	2787.38	40°07'04.847"N	104°53'35.908"W	3.15	
10948.00	91.300	89.340	7647.33	3092.39	-1182.57	2882.35	40°07'04.852"N	104°53'34.685"W	0.86	
11042.00	91.210	88.720	7645.27	3182.59	-1180.98	2976.31	40°07'04.867"N	104°53'33.476"W	0.67	
11136.00	90.990	88.240	7643.47	3272.54	-1178.49	3070.26	40°07'04.892"N	104°53'32.267"W	0.56	
11230.00	90.720	87.840	7642.06	3362.29	-1175.28	3164.19	40°07'04.923"N	104°53'31.057"W	0.51	
11325.00	90.410	87.750	7641.13	3452.87	-1171.62	3259.12	40°07'04.959"N	104°53'29.836"W	0.34	
11419.00	90.990	91.320	7639.98	3543.30	-1170.86	3353.09	40°07'04.967"N	104°53'28.626"W	3.85	
11513.00	90.900	89.510	7638.43	3634.12	-1171.54	3447.07	40°07'04.960"N	104°53'27.416"W	1.93	
11607.00	90.280	90.620	7637.46	3724.80	-1171.65	3541.07	40°07'04.959"N	104°53'26.206"W	1.35	
11702.00	91.780	89.250	7635.75	3816.38	-1171.54	3636.05	40°07'04.960"N	104°53'24.984"W	2.14	
11796.00	91.910	88.810	7632.72	3906.56	-1169.95	3729.98	40°07'04.975"N	104°53'23.775"W	0.49	
11891.00	92.000	88.720	7629.48	3997.57	-1167.90	3824.91	40°07'04.995"N	104°53'22.553"W	0.13	
11985.00	91.520	91.320	7626.60	4088.18	-1167.93	3918.85	40°07'04.995"N	104°53'21.344"W	2.81	
12079.00	92.000	90.530	7623.71	4179.19	-1169.45	4012.80	40°07'04.980"N	104°53'20.134"W	0.98	
12174.00	89.220	88.940	7622.70	4270.68	-1169.01	4107.78	40°07'04.984"N	104°53'18.912"W	3.37	
12269.00	89.220	90.040	7623.99	4362.06	-1168.17	4202.76	40°07'04.992"N	104°53'17.689"W	1.16	BAKER DRILLED USING THIRD PARTY MWD-LAST SURVEY (568'FSL & 347'FEL, SEC.21)
12330.00	89.220	90.040	7624.82	4420.90	-1168.21	4263.76	40°07'04.992"N	104°53'16.904"W	0.00	PROJECTION TO BIT (568'FSL & 408'FEL, SEC.21)

REFERENCE WELLPATH IDENTIFICATION			
Operator	EXTRACTION OIL & GAS	Slot	SLOT#07 LEONARD 9C (1740'FSL & 494'FWL, SEC.21)
Area	COLORADO	Well	LEONARD 9C
Field	WELD COUNTY (NAD83/TRUE NORTH)	Wellbore	LEONARD 9C AWB
Facility	SEC.21-T02N-R67W		

TARGETS								
Name	TVD [ft]	North [ft]	East [ft]	Grid East [US ft]	Grid North [US ft]	Latitude	Longitude	Shape
SEC.21-T02N-R67W BOTTOM HALF	3.00	195.99	-2.80	3166872.30	1287776.78	40°07'18.476"N	104°54'11.822"W	polygon
SEC.21-T02N-R67W TOP HALF	3.00	195.99	-2.80	3166872.30	1287776.78	40°07'18.476"N	104°54'11.822"W	polygon
SEC.21-T02N-R67W 460'FEL/FWL SETBACK	7463.00	195.99	-2.80	3166872.30	1287776.78	40°07'18.476"N	104°54'11.822"W	polygon
LEONARD 9C BHL (560'FSL & 460'FEL, SEC.21)	7618.00	-1176.26	4315.19	3171199.24	1286433.68	40°07'04.912"N	104°53'16.242"W	point
LEONARD 9C LP (560'FSL & 460'FWL, SEC.21)	7618.00	-1179.97	-20.71	3166863.65	1286400.79	40°07'04.879"N	104°54'12.053"W	point

WELLPATH COMPOSITION - Ref Wellbore: LEONARD 9C AWB					Ref Wellpath: LEONARD 9C AWP	
Start MD [ft]	End MD [ft]	Positional Uncertainty Model	Log Name/Comment		Wellbore	
0.00	1534.50	ISCWSA MWD, Rev. 4 (Standard)	TOTAL SURFACE SURVEYS <224.50-1534.50>		LEONARD 9C AWB	
1534.50	12269.00	ISCWSA MWD, Rev. 4 (Standard)	BAKER DRILLED USING THIRD PARTY MWD <1654-12269>		LEONARD 9C AWB	
12269.00	12330.00	Blind Drilling (std)	Projection to bit		LEONARD 9C AWB	



# Actual Wellpath Report

LEONARD 9C AWP

Page 7 of 7



## REFERENCE WELLPATH IDENTIFICATION

Operator	EXTRACTION OIL & GAS	Slot	SLOT#07 LEONARD 9C (1740'FSL & 494'FWL, SEC.21)
Area	COLORADO	Well	LEONARD 9C
Field	WELD COUNTY (NAD83/TRUE NORTH)	Wellbore	LEONARD 9C AWP
Facility	SEC.21-T02N-R67W		

## WELLPATH COMMENTS

MD [ft]	Inclination [°]	Azimuth [°]	TVD [ft]	Comment
1534.50	13.180	205.110	1513.67	TIED TO SURFACE SURVEYS
1654.00	13.520	202.550	1629.94	BAKER DRILLED USING THIRD PARTY MWD-FIRST SURVEY
8042.00	82.730	89.535	7598.07	CROSSED 460'SETBACK (563'FSL & 460'FWL, SEC.21)
12269.00	89.220	90.040	7623.99	BAKER DRILLED USING THIRD PARTY MWD-LAST SURVEY (568'FSL & 347'FEL, SEC.21)
12330.00	89.220	90.040	7624.82	PROJECTION TO BIT (568'FSL & 408'FEL, SEC.21)