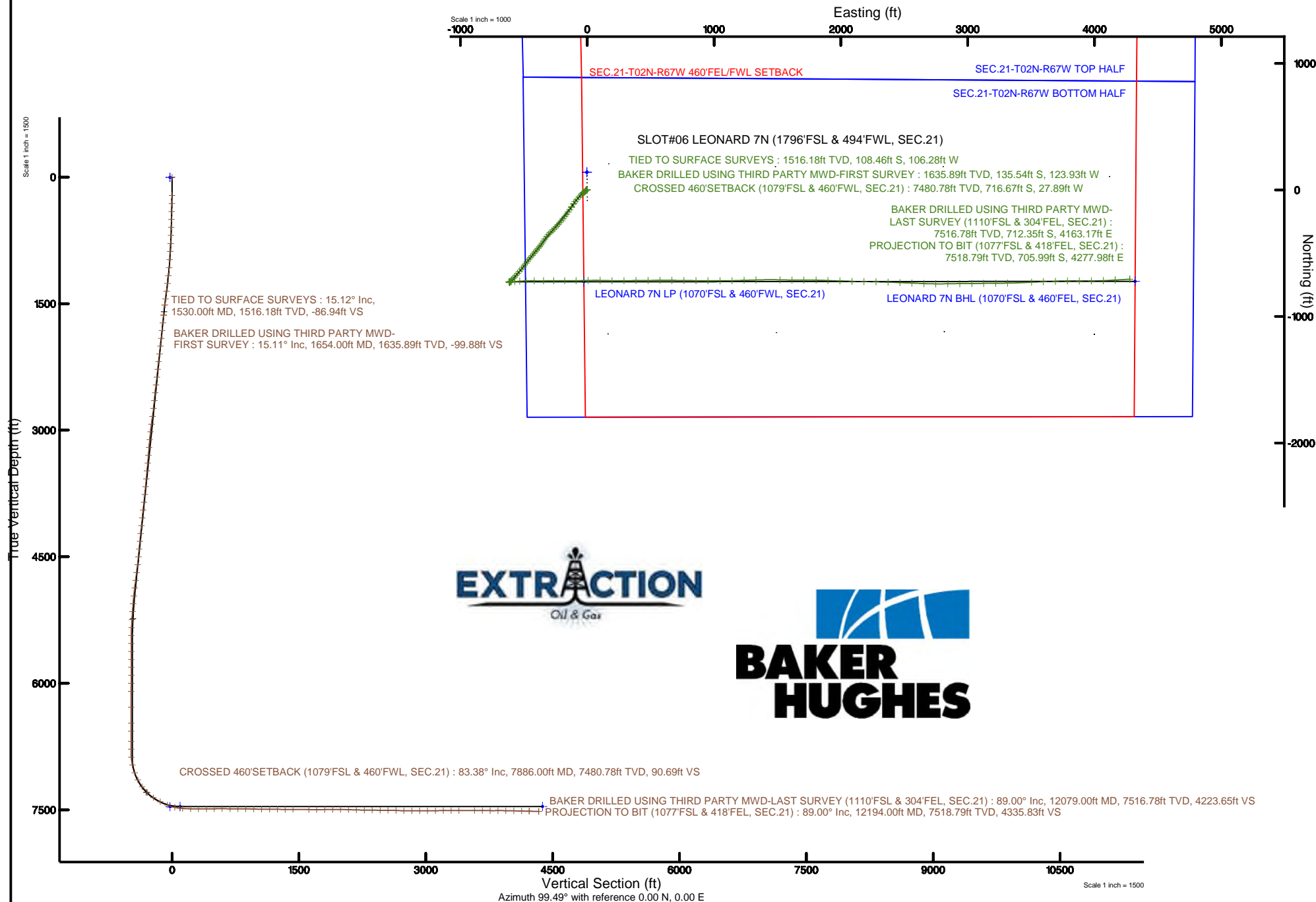


EXTRACTION OIL & GAS

Location: COLORADO Slot: SLOT#06 LEONARD 7N (1796'FSL & 494'FWL, SEC.21)
Field: WELD COUNTY (NAD83/TRUE NORTH) Well: LEONARD 7N
Facility: SEC.21-T02N-R67W Wellbore: LEONARD 7N PWB

Plot reference wellpath is LEONARD 7N PWP (REV-A.0)	Grid System: NAD83 / Lambert Colorado SP, Northern Zone (501), US feet
True vertical depths are referenced to CYCLONE 37 (28'KB) (RKB)	North Reference: True north
Measured depths are referenced to CYCLONE 37 (28'KB) (RKB)	Scale: True distance
CYCLONE 37 (28'KB) (RKB) to Mean Sea Level: 5032 feet	Depths are in feet
Mean Sea Level to Mud line (At Slot: SLOT#06 LEONARD 7N (1796'FSL & 494'FWL, SEC.21)): 0 feet	Created by: ingmjmr on 2017-10-05
Coordinates are in feet referenced to Slot	Database: WA_DEN_Denver_Defn





Actual Wellpath Report

LEONARD 7N AWP

Page 1 of 7



REFERENCE WELLPATH IDENTIFICATION			
Operator	EXTRACTION OIL & GAS	Slot	SLOT#06 LEONARD 7N (1796'FSL & 494'FWL, SEC.21)
Area	COLORADO	Well	LEONARD 7N
Field	WELD COUNTY (NAD83/TRUE NORTH)	Wellbore	LEONARD 7N AWP
Facility	SEC.21-T02N-R67W		

REPORT SETUP INFORMATION			
Projection System	NAD83 / Lambert Colorado SP, Northern Zone (501), US feet	Software System	WellArchitect® 5.1
North Reference	True	User	Ingmjmr
Scale	0.999959	Report Generated	10/5/2017 at 10:17:21 AM
Convergence at slot	0.39° East	Database/Source file	WA_DEN_Denver_Defn/LEONARD_7N_AWP.xml

WELLPATH LOCATION						
	Local coordinates		Grid coordinates		Geographic coordinates	
	North[ft]	East[ft]	Easting[US ft]	Northing[US ft]	Latitude	Longitude
Slot Location	-139.89	1.96	3166875.20	1287636.92	40°07'17.094"N	104°54'11.797"W
Facility Reference Pt			3166872.30	1287776.78	40°07'18.476"N	104°54'11.822"W
Field Reference Pt			3185481.27	1419166.81	40°28'55.560"N	104°49'59.556"W

WELLPATH DATUM			
Calculation method	Minimum curvature	CYCLONE 37 (28'KB) (RKB) to Facility Vertical Datum	5032.00ft
Horizontal Reference Pt	Slot	CYCLONE 37 (28'KB) (RKB) to Mean Sea Level	5032.00ft
Vertical Reference Pt	CYCLONE 37 (28'KB) (RKB)	CYCLONE 37 (28'KB) (RKB) to Mud Line at Slot (SLOT#06 LEONARD 7N (1796'FSL & 494'FWL, SEC.21))	5032.00ft
MD Reference Pt	CYCLONE 37 (28'KB) (RKB)	Section Origin	N 0.00, E 0.00 ft
Field Vertical Reference	Mean Sea Level	Section Azimuth	99.37°



Actual Wellpath Report

LEONARD 7N AWP

Page 2 of 7



REFERENCE WELLPATH IDENTIFICATION

Operator	EXTRACTION OIL & GAS	Slot	SLOT#06 LEONARD 7N (1796'FSL & 494'FWL, SEC.21)
Area	COLORADO	Well	LEONARD 7N
Field	WELD COUNTY (NAD83/TRUE NORTH)	Wellbore	LEONARD 7N AWB
Facility	SEC.21-T02N-R67W		

WELLPATH DATA (109 stations)

MD [ft]	Inclination [°]	Azimuth [°]	TVD [ft]	Vert Sect [ft]	North [ft]	East [ft]	Latitude	Longitude	DLS [°/100ft]	Comments
1654.00	15.110	211.850	1635.89	-100.21	-135.54	-123.93	40°07'15.755"N	104°54'13.392"W	0.52	BAKER DRILLED USING THIRD PARTY MWD-FIRST SURVEY
1749.00	14.320	214.450	1727.78	-109.92	-155.75	-137.11	40°07'15.555"N	104°54'13.562"W	1.08	
1843.00	13.390	216.030	1819.04	-119.73	-174.14	-150.09	40°07'15.373"N	104°54'13.729"W	1.07	
1938.00	13.300	213.920	1911.48	-129.21	-192.10	-162.66	40°07'15.196"N	104°54'13.891"W	0.52	
2032.00	13.700	219.340	2002.88	-139.26	-209.68	-175.75	40°07'15.022"N	104°54'14.059"W	1.41	
2127.00	13.390	219.640	2095.24	-150.43	-226.85	-189.90	40°07'14.852"N	104°54'14.242"W	0.33	
2221.00	12.900	218.320	2186.78	-160.99	-243.47	-203.35	40°07'14.688"N	104°54'14.415"W	0.61	
2316.00	11.890	217.750	2279.56	-170.78	-259.52	-215.91	40°07'14.529"N	104°54'14.577"W	1.07	
2410.00	12.510	222.510	2371.44	-180.94	-274.69	-228.72	40°07'14.380"N	104°54'14.741"W	1.26	
2505.00	11.710	224.140	2464.33	-192.07	-289.19	-242.39	40°07'14.236"N	104°54'14.917"W	0.92	
2599.00	10.300	223.830	2556.60	-202.26	-302.10	-254.85	40°07'14.109"N	104°54'15.078"W	1.50	
2694.00	9.500	224.320	2650.18	-211.56	-313.83	-266.21	40°07'13.993"N	104°54'15.224"W	0.85	
2788.00	10.690	226.030	2742.72	-221.21	-325.44	-277.91	40°07'13.878"N	104°54'15.374"W	1.31	
2883.00	12.200	228.810	2835.83	-232.85	-338.17	-291.80	40°07'13.752"N	104°54'15.553"W	1.69	
2978.00	12.990	224.230	2928.55	-245.33	-352.43	-306.80	40°07'13.611"N	104°54'15.746"W	1.34	
3072.00	13.920	216.820	3019.97	-256.58	-369.05	-320.95	40°07'13.447"N	104°54'15.929"W	2.08	
3167.00	13.210	213.830	3112.33	-266.34	-387.22	-333.84	40°07'13.267"N	104°54'16.095"W	1.05	
3261.00	12.280	212.330	3204.01	-274.69	-404.59	-345.17	40°07'13.096"N	104°54'16.240"W	1.05	
3356.00	11.000	211.320	3297.05	-282.01	-420.87	-355.28	40°07'12.935"N	104°54'16.370"W	1.36	
3450.00	11.090	218.850	3389.32	-289.82	-435.57	-365.62	40°07'12.790"N	104°54'16.504"W	1.54	
3545.00	9.500	219.340	3482.78	-298.23	-448.75	-376.32	40°07'12.659"N	104°54'16.641"W	1.68	
3640.00	10.120	219.820	3576.39	-306.37	-461.22	-386.63	40°07'12.536"N	104°54'16.774"W	0.66	
3735.00	11.400	218.940	3669.72	-315.24	-474.94	-397.88	40°07'12.401"N	104°54'16.919"W	1.36	
3829.00	12.110	221.140	3761.75	-325.01	-489.59	-410.21	40°07'12.256"N	104°54'17.077"W	0.89	
3924.00	11.090	216.430	3854.81	-334.42	-504.44	-422.19	40°07'12.109"N	104°54'17.232"W	1.46	
4018.00	11.490	223.040	3947.00	-343.72	-518.56	-433.95	40°07'11.969"N	104°54'17.383"W	1.44	
4113.00	12.110	221.540	4039.99	-354.27	-532.94	-447.01	40°07'11.827"N	104°54'17.551"W	0.73	
4208.00	12.280	217.620	4132.85	-364.36	-548.40	-459.79	40°07'11.675"N	104°54'17.716"W	0.89	
4302.00	11.000	216.520	4224.91	-373.18	-563.52	-471.23	40°07'11.525"N	104°54'17.863"W	1.38	
4397.00	11.890	217.040	4318.02	-381.86	-578.62	-482.52	40°07'11.376"N	104°54'18.008"W	0.94	



Actual Wellpath Report

LEONARD 7N AWP

Page 3 of 7



REFERENCE WELLPATH IDENTIFICATION

Operator	EXTRACTION OIL & GAS	Slot	SLOT#06 LEONARD 7N (1796'FSL & 494'FWL, SEC.21)
Area	COLORADO	Well	LEONARD 7N
Field	WELD COUNTY (NAD83/TRUE NORTH)	Wellbore	LEONARD 7N AWB
Facility	SEC.21-T02N-R67W		

WELLPATH DATA (109 stations)

MD [ft]	Inclination [°]	Azimuth [°]	TVD [ft]	Vert Sect [ft]	North [ft]	East [ft]	Latitude	Longitude	DLS [°/100ft]	Comments
4491.00	13.080	217.220	4409.80	-391.33	-594.82	-494.78	40°07'11.216"N	104°54'18.166"W	1.27	
4586.00	11.090	216.650	4502.69	-400.54	-610.71	-506.74	40°07'11.059"N	104°54'18.320"W	2.10	
4680.00	12.420	219.910	4594.71	-409.82	-625.72	-518.62	40°07'10.911"N	104°54'18.473"W	1.58	
4775.00	14.180	221.140	4687.16	-421.14	-642.32	-532.84	40°07'10.746"N	104°54'18.656"W	1.88	
4870.00	13.610	222.510	4779.38	-433.37	-659.32	-548.04	40°07'10.578"N	104°54'18.852"W	0.69	
4964.00	12.020	221.720	4871.04	-444.66	-674.78	-562.03	40°07'10.426"N	104°54'19.032"W	1.70	
5059.00	10.690	221.720	4964.18	-454.67	-688.74	-574.48	40°07'10.288"N	104°54'19.192"W	1.40	
5154.00	9.010	222.330	5057.77	-463.43	-700.82	-585.35	40°07'10.168"N	104°54'19.332"W	1.77	
5248.00	8.220	220.130	5150.71	-470.87	-711.40	-594.64	40°07'10.064"N	104°54'19.451"W	0.91	
5343.00	6.320	224.050	5244.94	-477.32	-720.35	-602.65	40°07'09.975"N	104°54'19.555"W	2.07	
5438.00	4.680	223.040	5339.50	-482.44	-726.94	-608.93	40°07'09.910"N	104°54'19.635"W	1.73	
5532.00	2.120	199.020	5433.34	-484.86	-731.39	-612.12	40°07'09.866"N	104°54'19.676"W	3.06	
5626.00	0.490	52.720	5527.32	-484.88	-732.79	-612.37	40°07'09.852"N	104°54'19.680"W	2.70	
5721.00	0.880	35.310	5622.31	-484.28	-731.95	-611.62	40°07'09.861"N	104°54'19.670"W	0.46	
5816.00	0.710	11.250	5717.30	-483.94	-730.77	-611.08	40°07'09.872"N	104°54'19.663"W	0.39	
5910.00	0.490	347.930	5811.30	-484.07	-729.81	-611.06	40°07'09.882"N	104°54'19.663"W	0.35	
6005.00	0.800	310.420	5906.29	-484.78	-728.98	-611.64	40°07'09.890"N	104°54'19.670"W	0.53	
6099.00	0.400	299.010	6000.28	-485.66	-728.40	-612.43	40°07'09.896"N	104°54'19.680"W	0.44	
6194.00	0.400	307.340	6095.28	-486.26	-728.04	-612.99	40°07'09.899"N	104°54'19.688"W	0.06	
6383.00	0.090	239.520	6284.28	-486.96	-727.71	-613.64	40°07'09.903"N	104°54'19.696"W	0.20	
6572.00	0.220	229.530	6473.28	-487.31	-728.02	-614.04	40°07'09.900"N	104°54'19.701"W	0.07	
6667.00	0.310	5.240	6568.28	-487.44	-727.89	-614.16	40°07'09.901"N	104°54'19.703"W	0.52	
6786.00	0.400	354.450	6687.28	-487.57	-727.15	-614.17	40°07'09.908"N	104°54'19.703"W	0.09	
6880.00	0.490	340.920	6781.27	-487.85	-726.44	-614.33	40°07'09.915"N	104°54'19.705"W	0.15	
6975.00	4.020	79.250	6876.20	-484.91	-725.44	-611.19	40°07'09.925"N	104°54'19.664"W	4.34	
7069.00	12.110	93.830	6969.20	-471.98	-725.48	-598.09	40°07'09.925"N	104°54'19.496"W	8.81	
7164.00	21.210	85.550	7060.13	-445.32	-724.81	-570.96	40°07'09.931"N	104°54'19.147"W	9.88	
7258.00	28.100	85.330	7145.50	-407.28	-721.69	-531.89	40°07'09.962"N	104°54'18.644"W	7.33	
7353.00	37.300	88.240	7225.37	-357.23	-718.98	-480.71	40°07'09.989"N	104°54'17.985"W	9.82	
7448.00	46.490	90.620	7296.01	-294.80	-718.46	-417.35	40°07'09.994"N	104°54'17.169"W	9.82	



Actual Wellpath Report

LEONARD 7N AWP

Page 4 of 7



REFERENCE WELLPATH IDENTIFICATION

Operator	EXTRACTION OIL & GAS	Slot	SLOT#06 LEONARD 7N (1796'FSL & 494'FWL, SEC.21)
Area	COLORADO	Well	LEONARD 7N
Field	WELD COUNTY (NAD83/TRUE NORTH)	Wellbore	LEONARD 7N AWB
Facility	SEC.21-T02N-R67W		

WELLPATH DATA (109 stations) † = interpolated/extrapolated station

MD [ft]	Inclination [°]	Azimuth [°]	TVD [ft]	Vert Sect [ft]	North [ft]	East [ft]	Latitude	Longitude	DLS [°/100ft]	Comments
7543.00	55.190	89.510	7355.95	-222.18	-718.50	-343.76	40°07'09.994"N	104°54'16.222"W	9.20	
7637.00	62.700	89.730	7404.40	-142.88	-717.98	-263.29	40°07'09.999"N	104°54'15.186"W	7.99	
7732.00	68.180	90.220	7443.87	-57.66	-717.95	-176.92	40°07'09.999"N	104°54'14.075"W	5.79	
7826.00	78.080	89.430	7471.12	30.93	-717.66	-87.08	40°07'10.002"N	104°54'12.918"W	10.56	
7886.00†	83.385	88.673	7480.78	89.17	-716.67	-27.89	40°07'10.012"N	104°54'12.156"W	8.93	CROSSED 460'SETBACK (1079'FSL & 460'FWL, SEC.21)
7921.00	86.480	88.240	7483.87	123.40	-715.73	6.95	40°07'10.021"N	104°54'11.708"W	8.93	
8016.00	88.910	91.140	7487.69	216.95	-715.22	101.86	40°07'10.026"N	104°54'10.486"W	3.98	
8110.00	90.280	91.230	7488.36	309.99	-717.17	195.83	40°07'10.007"N	104°54'09.276"W	1.46	
8205.00	89.630	89.430	7488.43	403.81	-717.71	290.83	40°07'10.001"N	104°54'08.054"W	2.01	
8300.00	91.300	89.120	7487.66	497.33	-716.51	385.81	40°07'10.013"N	104°54'06.831"W	1.79	
8394.00	89.620	89.510	7486.90	589.88	-715.39	479.80	40°07'10.024"N	104°54'05.621"W	1.83	
8489.00	89.320	89.910	7487.78	683.53	-714.91	574.79	40°07'10.029"N	104°54'04.398"W	0.53	
8583.00	89.220	90.220	7488.98	776.28	-715.01	668.78	40°07'10.028"N	104°54'03.189"W	0.35	
8677.00	90.190	90.530	7489.47	869.12	-715.63	762.78	40°07'10.022"N	104°54'01.979"W	1.08	
8772.00	87.720	91.230	7491.20	963.06	-717.09	857.75	40°07'10.008"N	104°54'00.756"W	2.70	
8867.00	89.310	90.130	7493.66	1056.93	-718.21	952.70	40°07'09.996"N	104°53'59.534"W	2.03	
8962.00	90.590	89.910	7493.74	1150.67	-718.25	1047.70	40°07'09.996"N	104°53'58.311"W	1.37	
9056.00	88.910	88.810	7494.15	1243.23	-717.20	1141.69	40°07'10.006"N	104°53'57.101"W	2.14	
9151.00	89.220	88.240	7495.70	1336.52	-714.75	1236.64	40°07'10.030"N	104°53'55.879"W	0.68	
9245.00	90.100	88.020	7496.26	1428.72	-711.69	1330.59	40°07'10.061"N	104°53'54.670"W	0.96	
9434.00	89.310	91.410	7497.23	1615.01	-710.75	1519.56	40°07'10.070"N	104°53'52.237"W	1.84	
9529.00	89.790	90.530	7497.98	1708.98	-712.35	1614.54	40°07'10.054"N	104°53'51.015"W	1.06	
9623.00	91.210	89.430	7497.16	1801.72	-712.32	1708.53	40°07'10.054"N	104°53'49.805"W	1.91	
9719.00	89.620	91.540	7496.46	1896.55	-713.13	1804.52	40°07'10.046"N	104°53'48.569"W	2.75	
9813.00	90.010	92.330	7496.77	1989.76	-716.31	1898.46	40°07'10.015"N	104°53'47.360"W	0.94	
9908.00	87.980	91.540	7498.43	2083.94	-719.51	1993.39	40°07'09.983"N	104°53'46.138"W	2.29	
10003.00	88.380	92.110	7501.45	2178.07	-722.54	2088.29	40°07'09.953"N	104°53'44.917"W	0.73	
10097.00	90.100	90.350	7502.70	2271.11	-724.56	2182.25	40°07'09.933"N	104°53'43.707"W	2.62	
10192.00	88.600	91.850	7503.78	2365.11	-726.38	2277.23	40°07'09.915"N	104°53'42.485"W	2.23	
10287.00	89.400	91.320	7505.43	2459.22	-729.01	2372.17	40°07'09.889"N	104°53'41.262"W	1.01	



Actual Wellpath Report

LEONARD 7N AWP

Page 5 of 7



REFERENCE WELLPATH IDENTIFICATION

Operator	EXTRACTION OIL & GAS	Slot	SLOT#06 LEONARD 7N (1796'FSL & 494'FWL, SEC.21)
Area	COLORADO	Well	LEONARD 7N
Field	WELD COUNTY (NAD83/TRUE NORTH)	Wellbore	LEONARD 7N AWB
Facility	SEC.21-T02N-R67W		

WELLPATH DATA (109 stations)

MD [ft]	Inclination [°]	Azimuth [°]	TVD [ft]	Vert Sect [ft]	North [ft]	East [ft]	Latitude	Longitude	DLS °/100ft	Comments
10381.00	90.010	92.420	7505.92	2552.41	-732.07	2466.12	40°07'09.858"N	104°53'40.053"W	1.34	
10475.00	87.800	92.730	7507.71	2645.73	-736.30	2560.00	40°07'09.817"N	104°53'38.845"W	2.37	
10570.00	88.510	91.720	7510.77	2739.94	-739.98	2654.88	40°07'09.780"N	104°53'37.623"W	1.30	
10664.00	89.700	90.620	7512.24	2832.96	-741.90	2748.85	40°07'09.761"N	104°53'36.414"W	1.72	
10758.00	90.900	88.630	7511.75	2925.60	-741.29	2842.84	40°07'09.767"N	104°53'35.204"W	2.47	
10853.00	89.880	89.820	7511.10	3019.11	-740.00	2937.82	40°07'09.780"N	104°53'33.981"W	1.65	
10948.00	90.990	89.430	7510.38	3112.73	-739.38	3032.82	40°07'09.786"N	104°53'32.759"W	1.24	
11042.00	90.100	89.340	7509.49	3205.30	-738.37	3126.80	40°07'09.795"N	104°53'31.549"W	0.95	
11136.00	91.210	89.650	7508.41	3297.90	-737.54	3220.79	40°07'09.803"N	104°53'30.339"W	1.23	
11230.00	88.690	89.120	7508.49	3390.47	-736.53	3314.78	40°07'09.813"N	104°53'29.129"W	2.74	
11419.00	91.120	86.430	7508.81	3575.58	-729.20	3503.61	40°07'09.886"N	104°53'26.698"W	1.92	
11513.00	89.090	88.410	7508.64	3667.53	-724.97	3597.50	40°07'09.927"N	104°53'25.490"W	3.02	
11607.00	89.480	88.150	7509.81	3759.77	-722.14	3691.45	40°07'09.955"N	104°53'24.281"W	0.50	
11702.00	90.720	89.030	7509.64	3853.09	-719.81	3786.42	40°07'09.978"N	104°53'23.058"W	1.60	
11796.00	88.510	90.350	7510.27	3945.74	-719.30	3880.41	40°07'09.983"N	104°53'21.848"W	2.74	
11891.00	89.310	89.730	7512.08	4039.47	-719.36	3975.39	40°07'09.982"N	104°53'20.626"W	1.07	
11985.00	87.980	87.440	7514.30	4131.77	-717.04	4069.33	40°07'10.005"N	104°53'19.416"W	2.82	
12079.00	89.000	86.830	7516.78	4223.60	-712.35	4163.17	40°07'10.051"N	104°53'18.208"W	1.26	BAKER DRILLED USING THIRD PARTY MWD-LAST SURVEY (1110'FSL & 304'FEL, SEC.21)
12194.00	89.000	86.830	7518.79	4335.84	-705.99	4277.98	40°07'10.114"N	104°53'16.731"W	0.00	PROJECTION TO BIT (1077'FSL & 418'FEL, SEC.21)



Actual Wellpath Report

LEONARD 7N AWP

Page 6 of 7



REFERENCE WELLPATH IDENTIFICATION			
Operator	EXTRACTION OIL & GAS	Slot	SLOT#06 LEONARD 7N (1796'FSL & 494'FWL, SEC.21)
Area	COLORADO	Well	LEONARD 7N
Field	WELD COUNTY (NAD83/TRUE NORTH)	Wellbore	LEONARD 7N AWB
Facility	SEC.21-T02N-R67W		

TARGETS								
Name	TVD [ft]	North [ft]	East [ft]	Grid East [US ft]	Grid North [US ft]	Latitude	Longitude	Shape
SEC.21-T02N-R67W BOTTOM HALF	3.00	139.89	-1.96	3166872.30	1287776.78	40°07'18.476"N	104°54'11.822"W	polygon
SEC.21-T02N-R67W TOP HALF	3.00	139.89	-1.96	3166872.30	1287776.78	40°07'18.476"N	104°54'11.822"W	polygon
LEONARD 7N BHL (1070'FSL & 460'FEL, SEC.21)	7460.00	-722.38	4319.86	3171199.64	1286943.65	40°07'09.952"N	104°53'16.192"W	point
LEONARD 7N LP (1070'FSL & 460'FWL, SEC.21)	7460.00	-726.04	-25.73	3166854.36	1286910.75	40°07'09.919"N	104°54'12.128"W	point
SEC.21-T02N-R67W 460'FEL/FWL SETBACK	7463.00	139.89	-1.96	3166872.30	1287776.78	40°07'18.476"N	104°54'11.822"W	polygon

WELLPATH COMPOSITION - Ref Wellbore: LEONARD 7N AWB					Ref Wellpath: LEONARD 7N AWP	
Start MD [ft]	End MD [ft]	Positional Uncertainty Model	Log Name/Comment		Wellbore	
0.00	1530.00	ISCWSA MWD, Rev. 4 (Standard)	TOTAL SURFACE SURVEYS <217-1530>		LEONARD 7N AWB	
1530.00	12079.00	ISCWSA MWD, Rev. 4 (Standard)	BAKER DRILLED USING THIRD PARTY MWD <1654-12079>		LEONARD 7N AWB	
12079.00	12194.00	Blind Drilling (std)	Projection to bit		LEONARD 7N AWB	



Actual Wellpath Report

LEONARD 7N AWP

Page 7 of 7



REFERENCE WELLPATH IDENTIFICATION

Operator	EXTRACTION OIL & GAS	Slot	SLOT#06 LEONARD 7N (1796'FSL & 494'FWL, SEC.21)
Area	COLORADO	Well	LEONARD 7N
Field	WELD COUNTY (NAD83/TRUE NORTH)	Wellbore	LEONARD 7N AWB
Facility	SEC.21-T02N-R67W		

WELLPATH COMMENTS

MD [ft]	Inclination [°]	Azimuth [°]	TVD [ft]	Comment
1530.00	15.120	214.340	1516.18	TIED TO SURFACE SURVEYS
1654.00	15.110	211.850	1635.89	BAKER DRILLED USING THIRD PARTY MWD-FIRST SURVEY
7886.00	83.385	88.673	7480.78	CROSSED 460'SETBACK (1079'FSL & 460'FWL, SEC.21)
12079.00	89.000	86.830	7516.78	BAKER DRILLED USING THIRD PARTY MWD-LAST SURVEY (1110'FSL & 304'FEL, SEC.21)
12194.00	89.000	86.830	7518.79	PROJECTION TO BIT (1077'FSL & 418'FEL, SEC.21)