

OPERATOR: **Extraction Oil & Gas**

WELL NAME: **Leonard 5C**

FIELD NAME: DJ Basin - Wattenberg

DRILLING RIG: Cyclone 37

API #: 05-123-45048

LAT/LONG: 40.121569, -104.90328

SURFACE HOLE: NWSW S21-T2N-R67W, 1852' FSL, 494' FWL

BOTTOM HOLE: S21-T2N-R67W, 1580' FSL, 460' FEL



Earth Science Agency, LLC

COUNTY: Weld

STATE: Colorado

GROUND ELEVATION: 5003'

KELLY BUSHING: 5031'

DRILLING FLUID: OBM

TVD VS. MD: 7604' / 9053'

SPUD DATE: September 18, 2017

TD DATE: September 19, 2017

DEPTHS LOGGED: 6000' - 9053'

DATES LOGGED: September 18, 2017 - September 19, 2017

GEOLOGISTS: Kyle Welty, Dan Jacobs

SCALE: 5" = 100'

LEGEND

CHALK

LIMESTONE

SHALY LIMESTONE

MARLSTONE

CALCAREOUS SHALE

DOLOMITE

SHALE

SILTY SHALE

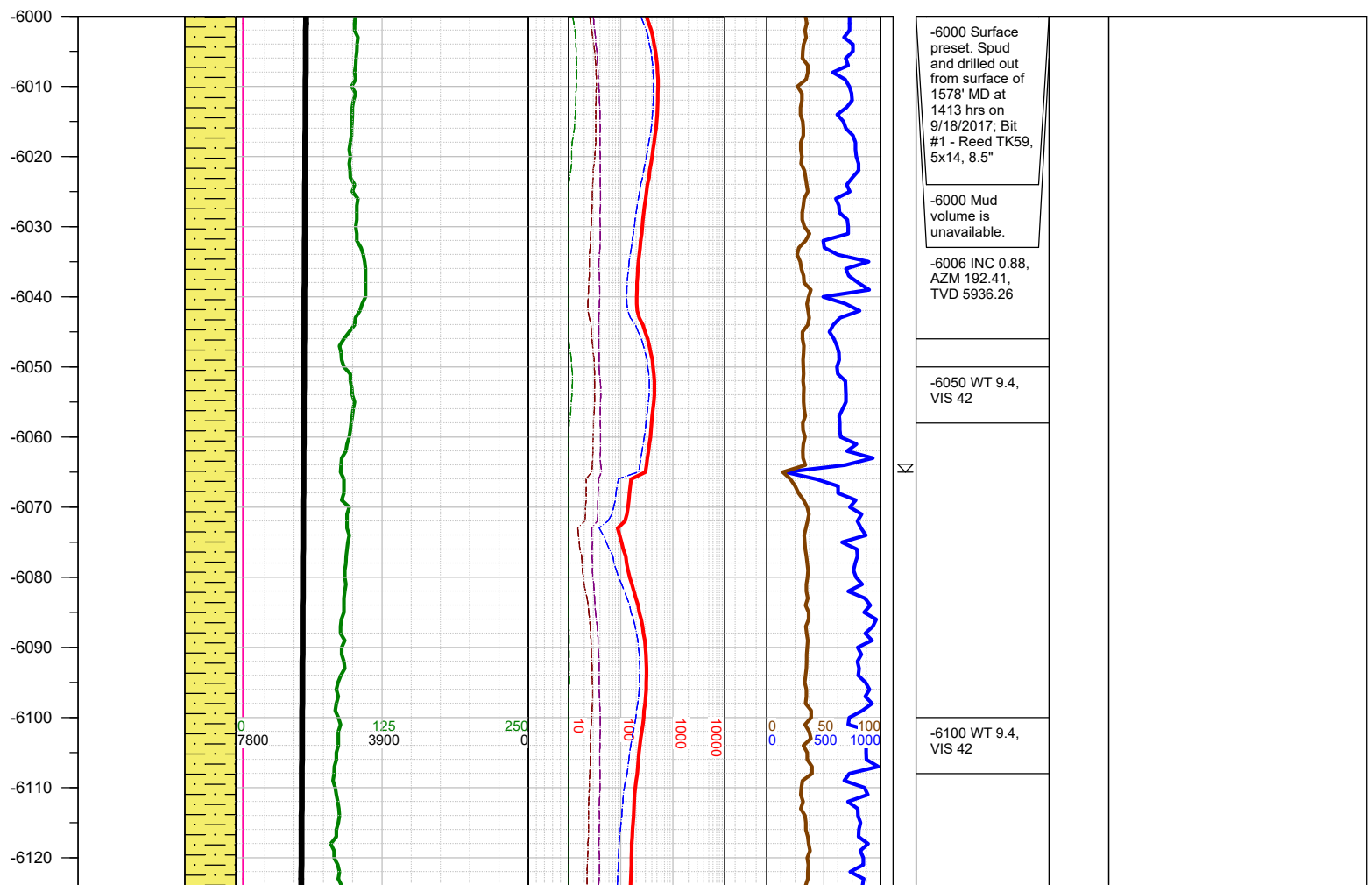
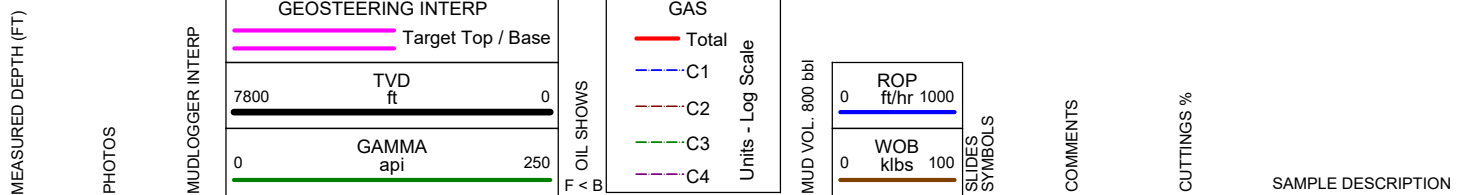
SHALY SILTSTONE

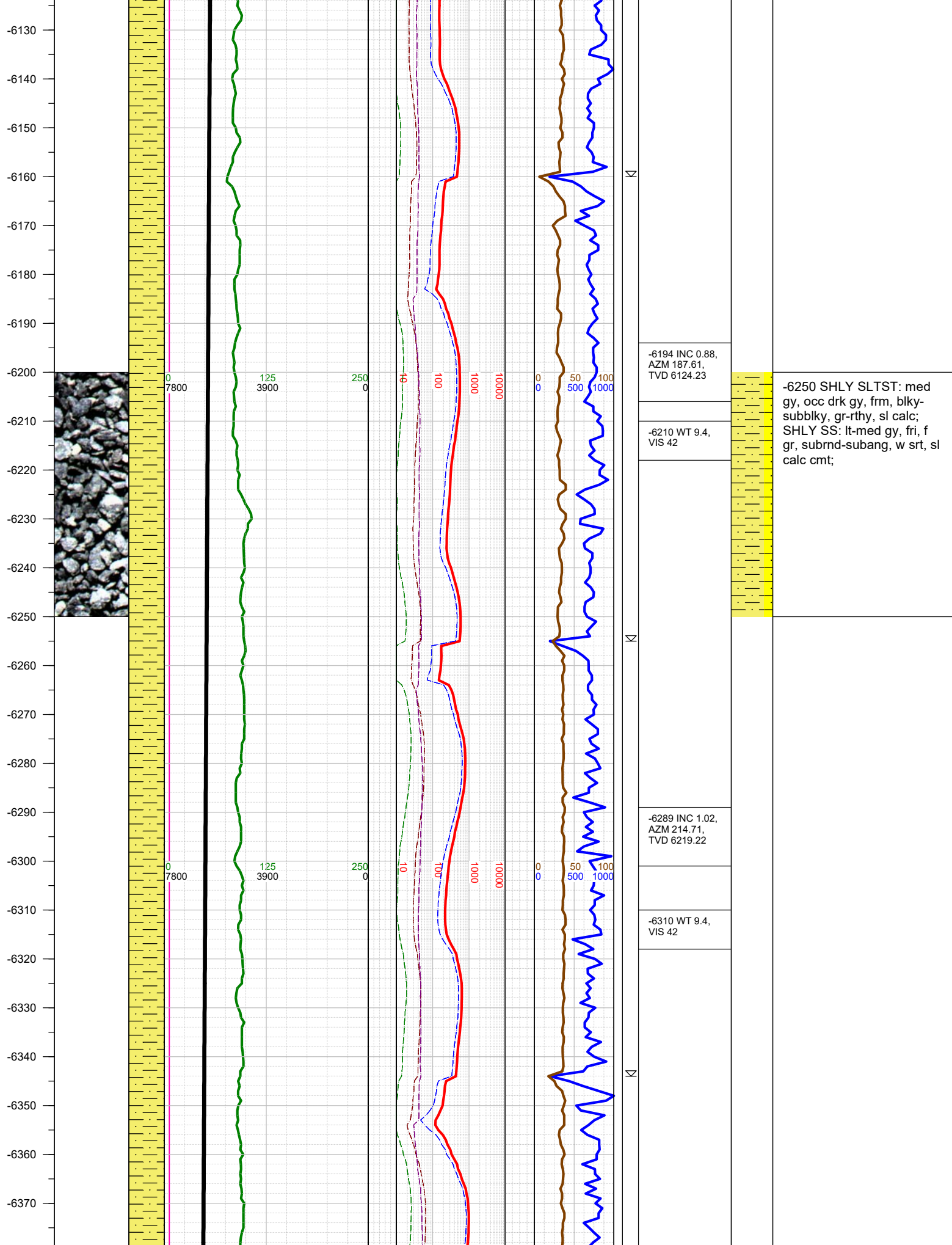
SHALY SANDSTONE

SANDSTONE

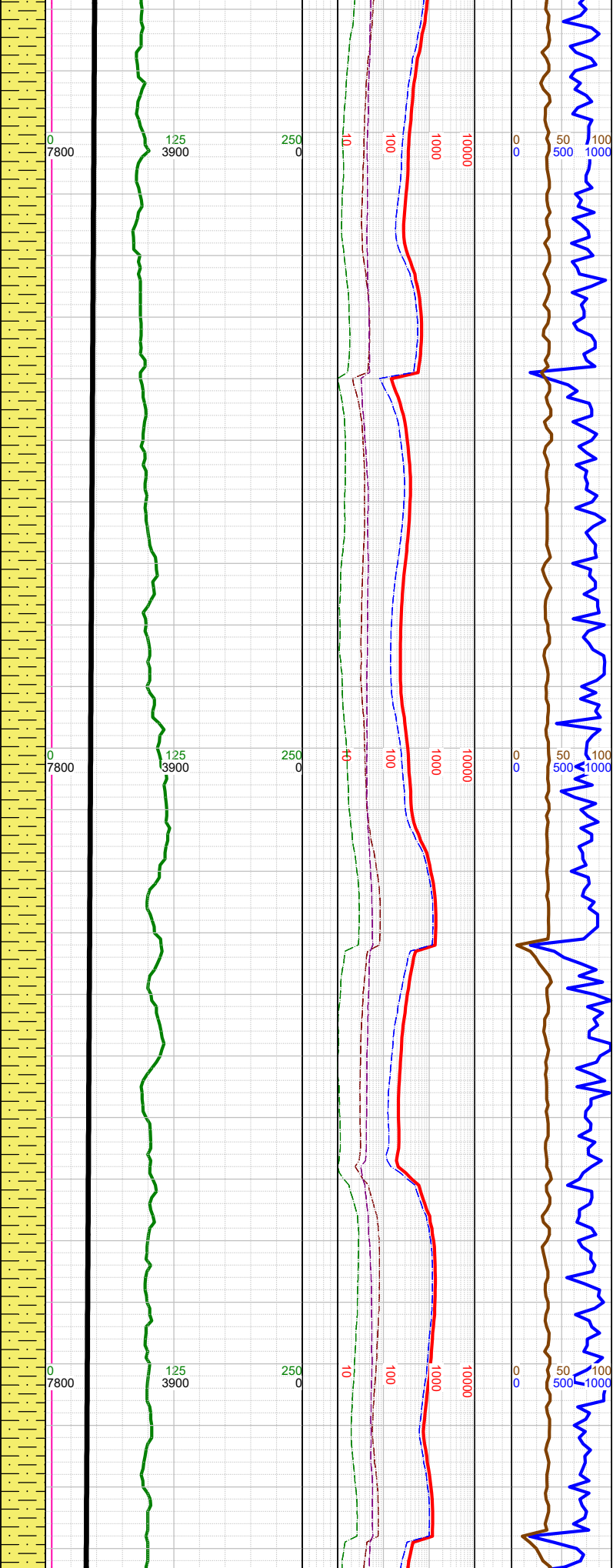
ANHYDRITE

FORMATION \approx CONNECTION Δ MIDNIGHT NEW BIT GAS SHOW FAULT

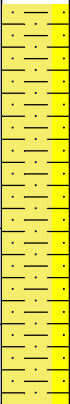




-6380
-6390
-6400
-6410
-6420
-6430
-6440
-6450
-6460
-6470
-6480
-6490
-6500
-6510
-6520
-6530
-6540
-6550
-6560
-6570
-6580
-6590
-6600
-6610
-6620
-6630



-6384 INC 1.1, AZM 235.82, TVD 6314.2
-6400 WT 9.4, VIS 42
-6478 INC 1.28, AZM 232.25, TVD 6408.18
-6500 WT 9.4, VIS 42
-6573 INC 1.28, AZM 221.14, TVD 6503.16
-6600 WT 9.4, VIS 42



-6500 SHLY SLTST: med
gy, occ drk gy, frm, blk-
subblk, gr-rthy, sl calc;
SHLY SS: lt-med gy, fri, f
gr, subrnd-subang, w srt, sl
calc cmt;

