

# EXTRACTION OIL & GAS

Location: COLORADO Slot: SLOT#03 LEONARD 4N (1880'FSL & 494'FWL, SEC.21)  
Field: WELD COUNTY (NAD83/TRUE NORTH) Well: LEONARD 4N  
Facility: SEC.21-T02N-R67W Wellbore: LEONARD 4N PWB

Plot reference wellpath is LEONARD 4N PWB (REV-A.0)

Grid System: NAD83 / Lambert Colorado SP, Northern Zone (501), US feet

True vertical depths are referenced to CYCLONE 37 (28'KB) (RKB)

North Reference: True north

Measured depths are referenced to CYCLONE 37 (28'KB) (RKB)

Scale: True distance

CYCLONE 37 (28'KB) (RKB) to Mean Sea Level: 5031 feet

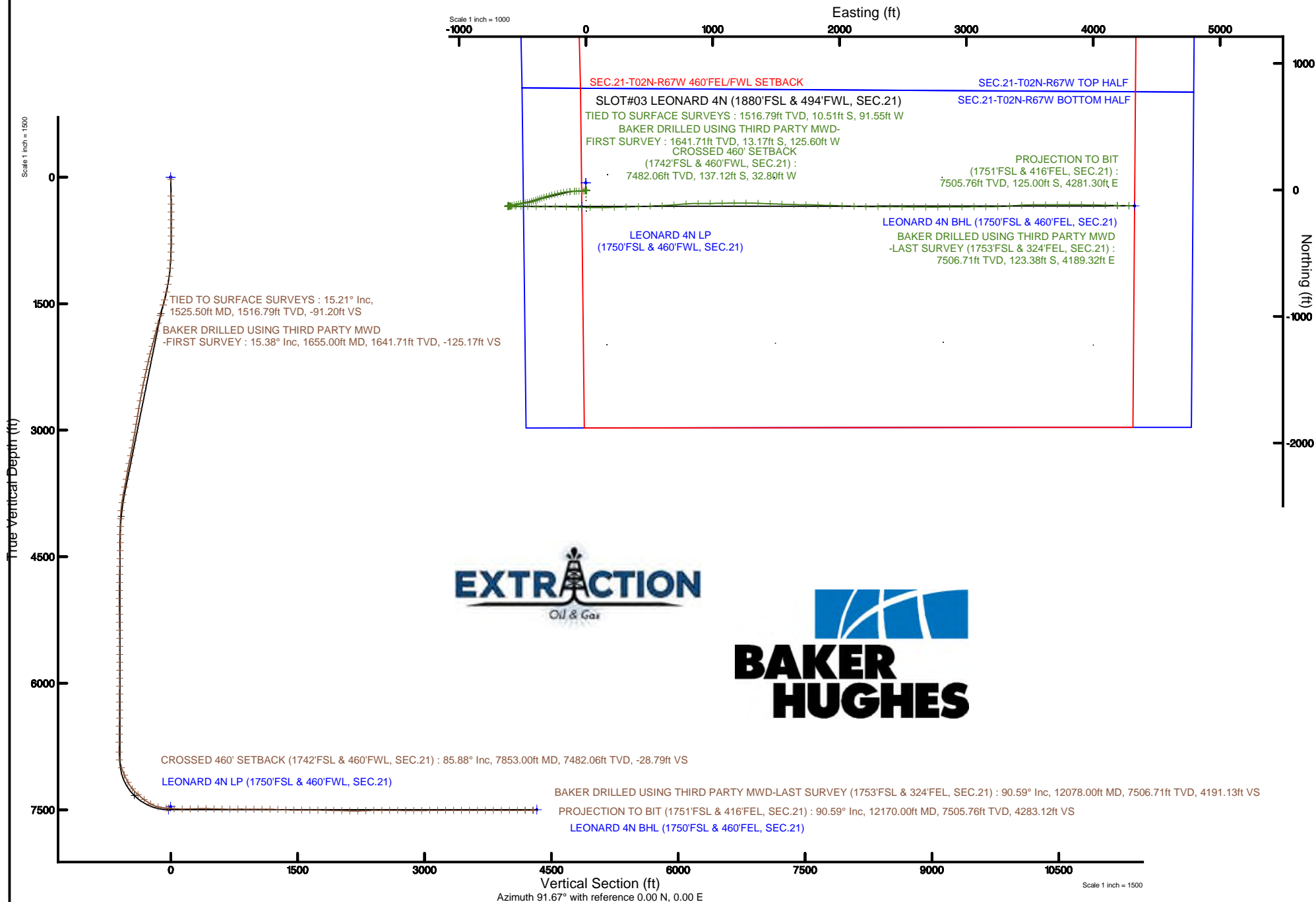
Depths are in feet

Mean Sea Level to Mud line (At Slot: SLOT#03 LEONARD 4N (1880'FSL & 494'FWL, SEC.21)): 0 feet

Created by: ingmjmr on 2017-10-05

Coordinates are in feet referenced to Slot

Database: WA\_DEN\_Denver\_Defn





# Actual Wellpath Report

LEONARD 4N AWP

Page 1 of 7



## REFERENCE WELLPATH IDENTIFICATION

Operator	EXTRACTION OIL & GAS	Slot	SLOT#03 LEONARD 4N (1880'FSL & 494'FWL, SEC.21)
Area	COLORADO	Well	LEONARD 4N
Field	WELD COUNTY (NAD83/TRUE NORTH)	Wellbore	LEONARD 4N AWP
Facility	SEC.21-T02N-R67W		

## REPORT SETUP INFORMATION

Projection System	NAD83 / Lambert Colorado SP, Northern Zone (501), US feet	Software System	WellArchitect® 5.1
North Reference	True	User	Ingmjmr
Scale	0.999959	Report Generated	10/5/2017 at 10:24:15 AM
Convergence at slot	0.39° East	Database/Source file	WA_DEN_Denver_Defn/LEONARD_4N_AWP.xml

## WELLPATH LOCATION

	Local coordinates		Grid coordinates		Geographic coordinates	
	North[ft]	East[ft]	Easting[US ft]	Northing[US ft]	Latitude	Longitude
Slot Location	-55.74	0.84	3166873.52	1287721.06	40°07'17.926"N	104°54'11.812"W
Facility Reference Pt			3166872.30	1287776.78	40°07'18.476"N	104°54'11.822"W
Field Reference Pt			3185481.27	1419166.81	40°28'55.560"N	104°49'59.556"W

## WELLPATH DATUM

Calculation method	Minimum curvature	CYCLONE 37 (28'KB) (RKB) to Facility Vertical Datum	5031.00ft
Horizontal Reference Pt	Slot	CYCLONE 37 (28'KB) (RKB) to Mean Sea Level	5031.00ft
Vertical Reference Pt	CYCLONE 37 (28'KB) (RKB)	CYCLONE 37 (28'KB) (RKB) to Mud Line at Slot (SLOT#03 LEONARD 4N (1880'FSL & 494'FWL, SEC.21))	5031.00ft
MD Reference Pt	CYCLONE 37 (28'KB) (RKB)	Section Origin	N 0.00, E 0.00 ft
Field Vertical Reference	Mean Sea Level	Section Azimuth	91.67°



# Actual Wellpath Report

LEONARD 4N AWP

Page 2 of 7



## REFERENCE WELLPATH IDENTIFICATION

Operator	EXTRACTION OIL & GAS	Slot	SLOT#03 LEONARD 4N (1880'FSL & 494'FWL, SEC.21)
Area	COLORADO	Well	LEONARD 4N
Field	WELD COUNTY (NAD83/TRUE NORTH)	Wellbore	LEONARD 4N AWB
Facility	SEC.21-T02N-R67W		

## WELLPATH DATA (114 stations)

MD [ft]	Inclination [°]	Azimuth [°]	TVD [ft]	Vert Sect [ft]	North [ft]	East [ft]	Latitude	Longitude	DLS [°/100ft]	Comments
1525.50	15.210	266.450	1516.79	-91.20	-10.51	-91.55	40°07'17.822"N	104°54'12.990"W	1.50	TIED TO SURFACE SURVEYS
1655.00	15.380	264.640	1641.71	-125.17	-13.17	-125.60	40°07'17.795"N	104°54'13.428"W	0.39	BAKER DRILLED USING THIRD PARTY MWD-FIRST SURVEY
1749.00	14.890	263.140	1732.45	-149.48	-15.77	-150.01	40°07'17.770"N	104°54'13.743"W	0.67	
1844.00	15.820	259.440	1824.06	-174.21	-19.60	-174.86	40°07'17.732"N	104°54'14.062"W	1.42	
1938.00	15.200	257.720	1914.63	-198.69	-24.57	-199.49	40°07'17.683"N	104°54'14.380"W	0.82	
2033.00	14.720	257.010	2006.41	-222.45	-29.94	-223.42	40°07'17.630"N	104°54'14.688"W	0.54	
2127.00	14.320	255.740	2097.41	-245.18	-35.48	-246.33	40°07'17.575"N	104°54'14.982"W	0.54	
2222.00	13.520	255.030	2189.62	-267.12	-41.25	-268.44	40°07'17.518"N	104°54'15.267"W	0.86	
2317.00	13.210	254.810	2282.05	-288.15	-46.96	-289.64	40°07'17.462"N	104°54'15.540"W	0.33	
2411.00	12.990	254.150	2373.60	-308.50	-52.66	-310.17	40°07'17.405"N	104°54'15.804"W	0.28	
2505.00	12.200	252.340	2465.34	-327.95	-58.56	-329.80	40°07'17.347"N	104°54'16.057"W	0.94	
2600.00	11.400	251.730	2558.33	-346.25	-64.55	-348.28	40°07'17.288"N	104°54'16.295"W	0.85	
2695.00	10.780	249.520	2651.56	-363.30	-70.60	-365.52	40°07'17.228"N	104°54'16.517"W	0.79	
2789.00	10.380	249.130	2743.96	-379.26	-76.69	-381.67	40°07'17.168"N	104°54'16.725"W	0.43	
2884.00	9.900	248.110	2837.47	-394.66	-82.78	-397.24	40°07'17.107"N	104°54'16.925"W	0.54	
2978.00	10.520	253.530	2929.99	-410.22	-88.23	-412.97	40°07'17.054"N	104°54'17.128"W	1.22	
3073.00	9.990	253.930	3023.47	-426.31	-92.97	-429.20	40°07'17.007"N	104°54'17.337"W	0.56	
3167.00	9.500	253.220	3116.11	-441.43	-97.47	-444.47	40°07'16.962"N	104°54'17.533"W	0.54	
3262.00	11.310	263.140	3209.55	-458.08	-100.84	-461.22	40°07'16.929"N	104°54'17.749"W	2.67	
3357.00	10.690	263.140	3302.81	-476.01	-103.01	-479.22	40°07'16.908"N	104°54'17.980"W	0.65	
3451.00	11.800	262.130	3395.00	-494.11	-105.36	-497.40	40°07'16.884"N	104°54'18.214"W	1.20	
3546.00	10.520	264.730	3488.20	-512.30	-107.49	-515.66	40°07'16.863"N	104°54'18.449"W	1.45	
3641.00	9.900	252.920	3581.71	-528.64	-110.69	-532.10	40°07'16.832"N	104°54'18.661"W	2.29	
3735.00	11.890	256.220	3674.01	-545.63	-115.37	-549.23	40°07'16.785"N	104°54'18.882"W	2.22	
3830.00	10.610	254.330	3767.18	-563.41	-120.06	-567.16	40°07'16.739"N	104°54'19.112"W	1.40	
3924.00	8.220	258.910	3859.91	-578.23	-123.69	-582.09	40°07'16.703"N	104°54'19.304"W	2.66	
4019.00	5.390	254.810	3954.23	-589.12	-126.17	-593.06	40°07'16.679"N	104°54'19.446"W	3.02	
4114.00	3.490	236.520	4048.95	-595.76	-128.93	-599.78	40°07'16.651"N	104°54'19.532"W	2.47	
4208.00	2.210	41.130	4142.90	-596.95	-129.14	-600.97	40°07'16.649"N	104°54'19.548"W	6.01	
4303.00	0.620	269.840	4237.88	-596.30	-127.77	-600.28	40°07'16.663"N	104°54'19.539"W	2.80	



# Actual Wellpath Report

LEONARD 4N AWP

Page 3 of 7



## REFERENCE WELLPATH IDENTIFICATION

Operator	EXTRACTION OIL & GAS	Slot	SLOT#03 LEONARD 4N (1880'FSL & 494'FWL, SEC.21)
Area	COLORADO	Well	LEONARD 4N
Field	WELD COUNTY (NAD83/TRUE NORTH)	Wellbore	LEONARD 4N AWB
Facility	SEC.21-T02N-R67W		

## WELLPATH DATA (114 stations)

MD [ft]	Inclination [°]	Azimuth [°]	TVD [ft]	Vert Sect [ft]	North [ft]	East [ft]	Latitude	Longitude	DLS [°/100ft]	Comments
4397.00	0.800	266.050	4331.88	-597.46	-127.81	-601.45	40°07'16.662"N	104°54'19.554"W	0.20	
4492.00	1.190	284.820	4426.86	-599.08	-127.61	-603.06	40°07'16.665"N	104°54'19.574"W	0.53	
4587.00	1.590	281.520	4521.83	-601.34	-127.09	-605.31	40°07'16.670"N	104°54'19.603"W	0.43	
4681.00	1.590	280.630	4615.80	-603.91	-126.59	-607.87	40°07'16.675"N	104°54'19.636"W	0.03	
4776.00	1.190	283.940	4710.77	-606.18	-126.11	-610.12	40°07'16.679"N	104°54'19.665"W	0.43	
4871.00	1.280	297.030	4805.75	-608.10	-125.39	-612.02	40°07'16.686"N	104°54'19.690"W	0.31	
4965.00	1.410	318.840	4899.72	-609.83	-124.04	-613.72	40°07'16.700"N	104°54'19.712"W	0.56	
5060.00	1.020	154.820	4994.71	-610.25	-123.93	-614.13	40°07'16.701"N	104°54'19.717"W	2.53	
5154.00	0.880	149.310	5088.70	-609.48	-125.30	-613.40	40°07'16.687"N	104°54'19.708"W	0.18	
5249.00	0.800	103.220	5183.69	-608.44	-126.08	-612.39	40°07'16.680"N	104°54'19.694"W	0.70	
5343.00	0.800	94.010	5277.68	-607.14	-126.28	-611.09	40°07'16.678"N	104°54'19.678"W	0.14	
5438.00	0.620	96.430	5372.68	-605.97	-126.38	-609.92	40°07'16.677"N	104°54'19.663"W	0.19	
5533.00	0.620	97.620	5467.67	-604.95	-126.51	-608.90	40°07'16.675"N	104°54'19.650"W	0.01	
5627.00	0.400	157.420	5561.67	-604.30	-126.88	-608.27	40°07'16.672"N	104°54'19.642"W	0.58	
5722.00	0.710	193.820	5656.66	-604.29	-127.76	-608.28	40°07'16.663"N	104°54'19.642"W	0.48	
5816.00	0.490	228.410	5750.66	-604.71	-128.59	-608.72	40°07'16.655"N	104°54'19.647"W	0.44	
5911.00	0.400	223.350	5845.65	-605.22	-129.10	-609.25	40°07'16.650"N	104°54'19.654"W	0.10	
6006.00	0.220	302.450	5940.65	-605.60	-129.24	-609.64	40°07'16.648"N	104°54'19.659"W	0.44	
6100.00	0.310	308.040	6034.65	-605.96	-128.99	-609.99	40°07'16.651"N	104°54'19.664"W	0.10	
6194.00	0.220	291.920	6128.65	-606.34	-128.77	-610.36	40°07'16.653"N	104°54'19.668"W	0.12	
6289.00	0.400	239.430	6223.65	-606.79	-128.87	-610.81	40°07'16.652"N	104°54'19.674"W	0.33	
6384.00	0.310	283.150	6318.65	-607.32	-128.98	-611.35	40°07'16.651"N	104°54'19.681"W	0.29	
6478.00	0.710	242.340	6412.64	-608.08	-129.19	-612.11	40°07'16.649"N	104°54'19.691"W	0.55	
6573.00	0.620	245.340	6507.64	-609.05	-129.68	-613.10	40°07'16.644"N	104°54'19.704"W	0.10	
6668.00	0.710	239.920	6602.63	-610.01	-130.19	-614.07	40°07'16.639"N	104°54'19.716"W	0.12	
6763.00	0.400	261.950	6697.63	-610.84	-130.53	-614.91	40°07'16.636"N	104°54'19.727"W	0.39	
6880.00	0.400	267.720	6814.62	-611.65	-130.60	-615.72	40°07'16.635"N	104°54'19.737"W	0.03	
6974.00	5.700	95.420	6908.48	-607.31	-131.06	-611.40	40°07'16.630"N	104°54'19.682"W	6.49	
7069.00	22.180	90.530	7000.37	-584.52	-131.67	-588.62	40°07'16.624"N	104°54'19.389"W	17.38	
7163.00	22.400	85.940	7087.35	-548.96	-130.57	-553.00	40°07'16.635"N	104°54'18.930"W	1.87	

### REFERENCE WELLPATH IDENTIFICATION

Operator	EXTRACTION OIL & GAS	Slot	SLOT#03 LEONARD 4N (1880'FSL & 494'FWL, SEC.21)
Area	COLORADO	Well	LEONARD 4N
Field	WELD COUNTY (NAD83/TRUE NORTH)	Wellbore	LEONARD 4N AWB
Facility	SEC.21-T02N-R67W		

### WELLPATH DATA (114 stations) † = interpolated/extrapolated station

MD [ft]	Inclination [°]	Azimuth [°]	TVD [ft]	Vert Sect [ft]	North [ft]	East [ft]	Latitude	Longitude	DLS [°/100ft]	Comments
7258.00	28.990	90.040	7172.91	-507.89	-129.30	-511.88	40°07'16.648"N	104°54'18.401"W	7.18	
7353.00	39.510	92.110	7251.33	-454.50	-130.43	-458.51	40°07'16.637"N	104°54'17.714"W	11.14	
7448.00	49.180	91.410	7319.19	-388.18	-132.43	-392.21	40°07'16.617"N	104°54'16.860"W	10.19	
7542.00	51.220	88.720	7379.36	-316.01	-132.49	-320.01	40°07'16.616"N	104°54'15.931"W	3.09	
7637.00	61.820	90.350	7431.70	-236.94	-131.92	-240.89	40°07'16.622"N	104°54'14.912"W	11.25	
7731.00	76.090	91.720	7465.37	-149.44	-133.55	-153.41	40°07'16.606"N	104°54'13.786"W	15.24	
7826.00	85.990	91.720	7480.15	-55.72	-136.36	-59.73	40°07'16.578"N	104°54'12.580"W	10.42	
7853.00†	85.875	91.516	7482.06	-28.79	-137.12	-32.80	40°07'16.571"N	104°54'12.234"W	0.87	CROSSED 460' SETBACK (1742'FSL & 460'FWL, SEC.21)
7920.00	85.590	91.010	7487.05	38.03	-138.60	33.99	40°07'16.556"N	104°54'11.374"W	0.87	
8015.00	89.880	89.510	7490.80	132.90	-139.02	128.89	40°07'16.552"N	104°54'10.152"W	4.78	
8110.00	91.300	88.240	7489.82	227.78	-137.16	223.87	40°07'16.570"N	104°54'08.930"W	2.01	
8204.00	92.490	88.020	7486.71	321.54	-134.09	317.76	40°07'16.600"N	104°54'07.721"W	1.29	
8299.00	87.980	88.320	7486.32	416.34	-131.06	412.69	40°07'16.630"N	104°54'06.499"W	4.76	
8393.00	87.980	87.840	7489.64	510.10	-127.91	506.58	40°07'16.661"N	104°54'05.291"W	0.51	
8488.00	88.820	87.530	7492.29	604.83	-124.08	601.46	40°07'16.699"N	104°54'04.069"W	0.94	
8582.00	90.100	85.420	7493.18	698.43	-118.30	695.27	40°07'16.756"N	104°54'02.862"W	2.63	
8677.00	90.810	85.550	7492.42	792.87	-110.82	789.97	40°07'16.830"N	104°54'01.643"W	0.76	
8772.00	88.380	89.650	7493.09	887.60	-106.84	884.86	40°07'16.870"N	104°54'00.421"W	5.02	
8866.00	89.880	90.130	7494.52	981.54	-106.66	978.85	40°07'16.871"N	104°53'59.211"W	1.68	
8961.00	91.600	88.540	7493.29	1076.45	-105.56	1073.83	40°07'16.882"N	104°53'57.989"W	2.47	
9056.00	88.200	90.350	7493.46	1171.36	-104.64	1168.80	40°07'16.891"N	104°53'56.766"W	4.05	
9150.00	87.720	89.430	7496.81	1265.25	-104.46	1262.74	40°07'16.893"N	104°53'55.557"W	1.10	
9244.00	87.720	92.510	7500.55	1359.16	-106.05	1356.64	40°07'16.877"N	104°53'54.348"W	3.27	
9339.00	88.910	92.020	7503.34	1454.11	-109.80	1451.53	40°07'16.840"N	104°53'53.127"W	1.35	
9433.00	90.280	91.940	7504.00	1548.11	-113.05	1545.47	40°07'16.808"N	104°53'51.918"W	1.46	
9528.00	89.220	91.630	7504.42	1643.10	-116.01	1640.42	40°07'16.779"N	104°53'50.695"W	1.16	
9623.00	90.990	90.130	7504.24	1738.09	-117.47	1735.40	40°07'16.764"N	104°53'49.473"W	2.44	
9718.00	87.980	92.640	7505.10	1833.07	-119.76	1830.35	40°07'16.741"N	104°53'48.251"W	4.13	
9812.00	88.820	91.140	7507.72	1927.02	-122.86	1924.26	40°07'16.711"N	104°53'47.042"W	1.83	
9907.00	88.820	92.330	7509.68	2022.00	-125.74	2019.19	40°07'16.682"N	104°53'45.820"W	1.25	



# Actual Wellpath Report

LEONARD 4N AWP

Page 5 of 7



REFERENCE WELLPATH IDENTIFICATION			
Operator	EXTRACTION OIL & GAS	Slot	SLOT#03 LEONARD 4N (1880'FSL & 494'FWL, SEC.21)
Area	COLORADO	Well	LEONARD 4N
Field	WELD COUNTY (NAD83/TRUE NORTH)	Wellbore	LEONARD 4N AWB
Facility	SEC.21-T02N-R67W		

WELLPATH DATA (114 stations)										
MD [ft]	Inclination [°]	Azimuth [°]	TVD [ft]	Vert Sect [ft]	North [ft]	East [ft]	Latitude	Longitude	DLS °/100ft	Comments
10002.00	88.110	92.250	7512.22	2116.96	-129.53	2114.08	40°07'16.645"N	104°53'44.598"W	0.75	
10096.00	91.300	90.840	7512.71	2210.95	-132.07	2208.03	40°07'16.620"N	104°53'43.389"W	3.71	
10191.00	91.910	90.040	7510.05	2305.89	-132.80	2302.99	40°07'16.612"N	104°53'42.166"W	1.06	
10286.00	92.310	89.730	7506.55	2400.78	-132.61	2397.93	40°07'16.614"N	104°53'40.944"W	0.53	
10380.00	89.090	91.010	7505.40	2494.73	-133.21	2491.90	40°07'16.608"N	104°53'39.735"W	3.69	
10474.00	90.810	90.220	7505.48	2588.71	-134.22	2585.89	40°07'16.598"N	104°53'38.525"W	2.01	
10569.00	87.800	90.530	7506.64	2683.67	-134.84	2680.87	40°07'16.592"N	104°53'37.302"W	3.19	
10663.00	89.400	89.650	7508.93	2777.60	-134.99	2774.84	40°07'16.590"N	104°53'36.093"W	1.94	
10757.00	90.410	89.650	7509.09	2871.54	-134.42	2868.84	40°07'16.596"N	104°53'34.883"W	1.07	
10852.00	90.410	89.820	7508.41	2966.48	-133.98	2963.83	40°07'16.600"N	104°53'33.660"W	0.18	
10947.00	91.600	88.810	7506.74	3061.38	-132.84	3058.81	40°07'16.611"N	104°53'32.437"W	1.64	
11041.00	89.620	90.350	7505.74	3155.31	-132.15	3152.79	40°07'16.618"N	104°53'31.227"W	2.67	
11135.00	89.480	88.810	7506.48	3249.24	-131.46	3246.79	40°07'16.624"N	104°53'30.018"W	1.65	
11229.00	89.620	86.520	7507.22	3343.00	-127.63	3340.70	40°07'16.662"N	104°53'28.809"W	2.44	
11324.00	90.500	85.940	7507.12	3437.57	-121.39	3435.49	40°07'16.724"N	104°53'27.588"W	1.11	
11418.00	90.280	89.650	7506.48	3531.34	-117.77	3529.40	40°07'16.759"N	104°53'26.380"W	3.95	
11512.00	89.310	89.650	7506.82	3625.28	-117.20	3623.40	40°07'16.765"N	104°53'25.170"W	1.03	
11606.00	90.100	89.730	7507.30	3719.22	-116.69	3717.40	40°07'16.770"N	104°53'23.960"W	0.84	
11701.00	90.100	90.530	7507.13	3814.18	-116.90	3812.40	40°07'16.767"N	104°53'22.737"W	0.84	
11795.00	90.720	90.620	7506.46	3908.16	-117.85	3906.39	40°07'16.758"N	104°53'21.527"W	0.67	
11890.00	90.190	90.920	7505.71	4003.15	-119.12	4001.38	40°07'16.745"N	104°53'20.304"W	0.64	
11984.00	89.000	91.630	7506.37	4097.14	-121.22	4095.35	40°07'16.724"N	104°53'19.094"W	1.47	
12078.00	90.590	91.010	7506.71	4191.13	-123.38	4189.32	40°07'16.703"N	104°53'17.885"W	1.82	BAKER DRILLED USING THIRD PARTY MWD-LAST SURVEY (1753'FSL & 324'FEL, SEC.21)
12170.00	90.590	91.010	7505.76	4283.12	-125.00	4281.30	40°07'16.687"N	104°53'16.701"W	0.00	PROJECTION TO BIT (1751'FSL & 416'FEL, SEC.21)



# Actual Wellpath Report

LEONARD 4N AWP

Page 6 of 7



REFERENCE WELLPATH IDENTIFICATION			
Operator	EXTRACTION OIL & GAS	Slot	SLOT#03 LEONARD 4N (1880'FSL & 494'FWL, SEC.21)
Area	COLORADO	Well	LEONARD 4N
Field	WELD COUNTY (NAD83/TRUE NORTH)	Wellbore	LEONARD 4N AWB
Facility	SEC.21-T02N-R67W		

TARGETS								
Name	TVD [ft]	North [ft]	East [ft]	Grid East [US ft]	Grid North [US ft]	Latitude	Longitude	Shape
SEC.21-T02N-R67W BOTTOM HALF	2.00	55.74	-0.84	3166872.30	1287776.78	40°07'18.476"N	104°54'11.822"W	polygon
SEC.21-T02N-R67W TOP HALF	2.00	55.74	-0.84	3166872.30	1287776.78	40°07'18.476"N	104°54'11.822"W	polygon
SEC.21-T02N-R67W 460'FEL/FWL SETBACK	7462.00	55.74	-0.84	3166872.30	1287776.78	40°07'18.476"N	104°54'11.822"W	polygon
LEONARD 4N BHL (1750'FSL & 460'FEL, SEC.21)	7498.00	-126.38	4325.64	3171199.73	1287623.79	40°07'16.673"N	104°53'16.130"W	point
LEONARD 4N LP (1750'FSL & 460'FWL, SEC.21)	7498.00	-130.40	-32.43	3166841.97	1287590.45	40°07'16.637"N	104°54'12.229"W	point

WELLPATH COMPOSITION - Ref Wellbore: LEONARD 4N AWB					Ref Wellpath: LEONARD 4N AWP	
Start MD [ft]	End MD [ft]	Positional Uncertainty Model	Log Name/Comment		Wellbore	
28.00	1525.50	ISCWSA MWD, Rev. 4 (Standard)	TOTAL SURVEYS <223.50-1525.50>		LEONARD 4N AWB	
1525.50	12078.00	ISCWSA MWD, Rev. 4 (Standard)	BAKER DRILLED USING THIRD PARTY MWD <1655-12078>		LEONARD 4N AWB	
12078.00	12170.00	Blind Drilling (std)	Projection to bit		LEONARD 4N AWB	



# Actual Wellpath Report

LEONARD 4N AWP

Page 7 of 7



## REFERENCE WELLPATH IDENTIFICATION

Operator	EXTRACTION OIL & GAS	Slot	SLOT#03 LEONARD 4N (1880'FSL & 494'FWL, SEC.21)
Area	COLORADO	Well	LEONARD 4N
Field	WELD COUNTY (NAD83/TRUE NORTH)	Wellbore	LEONARD 4N AWB
Facility	SEC.21-T02N-R67W		

## WELLPATH COMMENTS

MD [ft]	Inclination [°]	Azimuth [°]	TVD [ft]	Comment
1525.50	15.210	266.450	1516.79	TIED TO SURFACE SURVEYS
1655.00	15.380	264.640	1641.71	BAKER DRILLED USING THIRD PARTY MWD-FIRST SURVEY
7853.00	85.875	91.516	7482.06	CROSSED 460' SETBACK (1742'FSL & 460'FWL, SEC.21)
12078.00	90.590	91.010	7506.71	BAKER DRILLED USING THIRD PARTY MWD-LAST SURVEY (1753'FSL & 324'FEL, SEC.21)
12170.00	90.590	91.010	7505.76	PROJECTION TO BIT (1751'FSL & 416'FEL, SEC.21)