

EXTRACTION OIL & GAS

Location: COLORADO Slot: SLOT#02 LEONARD 3N (1908'FSL & 494'FWL, SEC.21)
Field: WELD COUNTY (NAD83/TRUE NORTH) Well: LEONARD 3N
Facility: SEC.21-T02N-R67W Wellbore: LEONARD 3N PWB

Plot reference wellpath is LEONARD 3N PWB (REV-A.0)

True vertical depths are referenced to CYCLONE 37 (28'KB) (RKB)

Measured depths are referenced to CYCLONE 37 (28'KB) (RKB)

CYCLONE 37 (28'KB) (RKB) to Mean Sea Level: 5030 feet

Mean Sea Level to Mud line (At Slot: SLOT#02 LEONARD 3N (1908'FSL & 494'FWL, SEC.21)): 0 feet

Coordinates are in feet referenced to Slot

Grid System: NAD83 / Lambert Colorado SP, Northern Zone (501), US feet

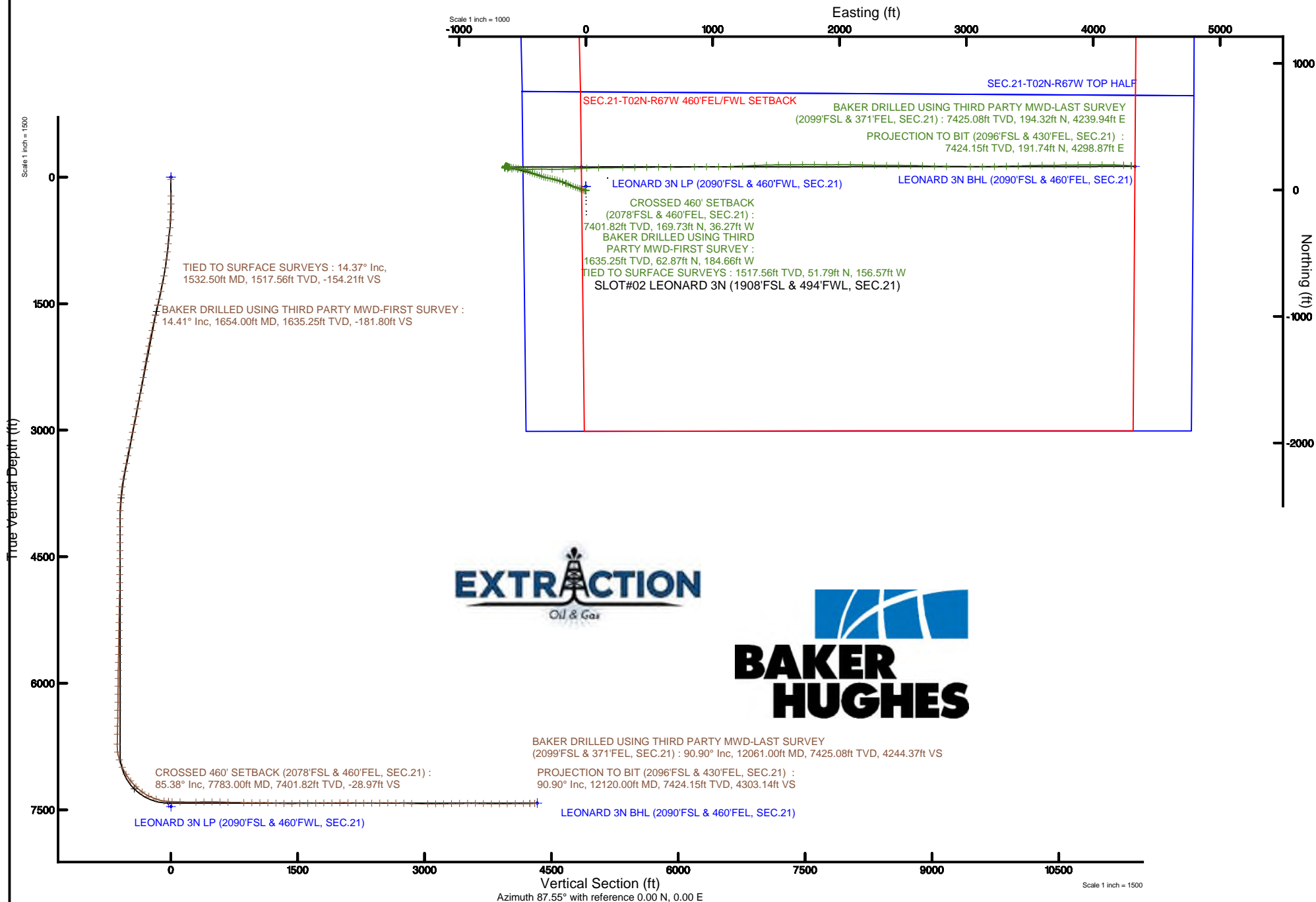
North Reference: True north

Scale: True distance

Depths are in feet

Created by: ingmjamm on 2017-10-05

Database: WA_DEN_Denver_Defn





Actual Wellpath Report

LEONARD 3N AWP

Page 1 of 7



REFERENCE WELLPATH IDENTIFICATION			
Operator	EXTRACTION OIL & GAS	Slot	SLOT#02 LEONARD 3N (1908'FSL & 494'FWL, SEC.21)
Area	COLORADO	Well	LEONARD 3N
Field	WELD COUNTY (NAD83/TRUE NORTH)	Wellbore	LEONARD 3N AWP
Facility	SEC.21-T02N-R67W		

REPORT SETUP INFORMATION			
Projection System	NAD83 / Lambert Colorado SP, Northern Zone (501), US feet	Software System	WellArchitect® 5.1
North Reference	True	User	Ingmjmr
Scale	0.999959	Report Generated	10/5/2017 at 10:26:11 AM
Convergence at slot	0.39° East	Database/Source file	WA_DEN_Denver_Defn/LEONARD_3N_AWP.xml

WELLPATH LOCATION						
	Local coordinates		Grid coordinates		Geographic coordinates	
	North[ft]	East[ft]	Easting[US ft]	Northing[US ft]	Latitude	Longitude
Slot Location	-27.69	0.28	3166872.77	1287749.10	40°07'18.203"N	104°54'11.819"W
Facility Reference Pt			3166872.30	1287776.78	40°07'18.476"N	104°54'11.822"W
Field Reference Pt			3185481.27	1419166.81	40°28'55.560"N	104°49'59.556"W

WELLPATH DATUM			
Calculation method	Minimum curvature	CYCLONE 37 (28'KB) (RKB) to Facility Vertical Datum	5030.00ft
Horizontal Reference Pt	Slot	CYCLONE 37 (28'KB) (RKB) to Mean Sea Level	5030.00ft
Vertical Reference Pt	CYCLONE 37 (28'KB) (RKB)	CYCLONE 37 (28'KB) (RKB) to Mud Line at Slot (SLOT#02 LEONARD 3N (1908'FSL & 494'FWL, SEC.21))	5030.00ft
MD Reference Pt	CYCLONE 37 (28'KB) (RKB)	Section Origin	N 0.00, E 0.00 ft
Field Vertical Reference	Mean Sea Level	Section Azimuth	87.55°

REFERENCE WELLPATH IDENTIFICATION

Operator	EXTRACTION OIL & GAS	Slot	SLOT#02 LEONARD 3N (1908'FSL & 494'FWL, SEC.21)
Area	COLORADO	Well	LEONARD 3N
Field	WELD COUNTY (NAD83/TRUE NORTH)	Wellbore	LEONARD 3N AWB
Facility	SEC.21-T02N-R67W		

WELLPATH DATA (111 stations)

MD [ft]	Inclination [°]	Azimuth [°]	TVD [ft]	Vert Sect [ft]	North [ft]	East [ft]	Latitude	Longitude	DLS [°/100ft]	Comments
1532.50	14.370	291.940	1517.56	-154.21	51.79	-156.57	40°07'18.715"N	104°54'13.834"W	1.07	TIED TO SURFACE SURVEYS
1654.00	14.410	291.120	1635.25	-181.80	62.87	-184.66	40°07'18.824"N	104°54'14.196"W	0.17	BAKER DRILLED USING THIRD PARTY MWD-FIRST SURVEY
1748.00	13.520	288.830	1726.47	-202.76	70.63	-205.97	40°07'18.901"N	104°54'14.470"W	1.11	
1843.00	12.810	286.140	1818.97	-223.09	77.14	-226.60	40°07'18.965"N	104°54'14.736"W	0.99	
1937.00	12.020	284.030	1910.77	-242.35	82.41	-246.11	40°07'19.017"N	104°54'14.987"W	0.97	
2032.00	11.620	282.620	2003.76	-261.08	86.90	-265.04	40°07'19.062"N	104°54'15.231"W	0.52	
2126.00	10.910	282.620	2095.95	-278.81	90.91	-282.96	40°07'19.101"N	104°54'15.461"W	0.76	
2221.00	10.380	280.940	2189.31	-295.81	94.50	-300.14	40°07'19.137"N	104°54'15.682"W	0.65	
2316.00	9.720	280.020	2282.86	-311.97	97.52	-316.44	40°07'19.166"N	104°54'15.892"W	0.71	
2410.00	10.690	288.740	2375.37	-327.85	101.70	-332.51	40°07'19.208"N	104°54'16.099"W	1.94	
2504.00	12.020	290.730	2467.53	-344.98	107.97	-349.92	40°07'19.270"N	104°54'16.323"W	1.47	
2599.00	10.910	288.350	2560.63	-362.47	114.30	-367.70	40°07'19.332"N	104°54'16.552"W	1.27	
2694.00	12.110	289.540	2653.72	-380.12	120.46	-385.63	40°07'19.393"N	104°54'16.783"W	1.29	
2788.00	11.310	289.320	2745.77	-397.82	126.81	-403.62	40°07'19.456"N	104°54'17.014"W	0.85	
2883.00	12.810	290.240	2838.67	-416.19	133.53	-422.29	40°07'19.522"N	104°54'17.255"W	1.59	
2977.00	11.890	290.330	2930.49	-434.73	140.50	-441.15	40°07'19.591"N	104°54'17.498"W	0.98	
3072.00	12.900	289.320	3023.27	-453.60	147.41	-460.34	40°07'19.660"N	104°54'17.745"W	1.09	
3166.00	11.400	289.710	3115.17	-471.95	154.02	-478.98	40°07'19.725"N	104°54'17.985"W	1.60	
3261.00	12.590	283.940	3208.09	-490.58	159.68	-497.87	40°07'19.781"N	104°54'18.228"W	1.78	
3356.00	11.090	284.420	3301.07	-509.26	164.45	-516.77	40°07'19.828"N	104°54'18.471"W	1.58	
3450.00	11.000	283.630	3393.33	-526.53	168.81	-534.24	40°07'19.871"N	104°54'18.696"W	0.19	
3545.00	11.620	279.050	3486.49	-544.61	172.45	-552.50	40°07'19.907"N	104°54'18.931"W	1.15	
3640.00	10.300	278.920	3579.75	-562.31	175.28	-570.34	40°07'19.935"N	104°54'19.161"W	1.39	
3734.00	7.910	277.020	3672.56	-576.93	177.37	-585.06	40°07'19.956"N	104°54'19.350"W	2.56	
3829.00	6.010	284.340	3766.86	-588.14	179.40	-596.37	40°07'19.976"N	104°54'19.496"W	2.20	
3923.00	3.800	283.410	3860.51	-595.85	181.34	-604.17	40°07'19.995"N	104°54'19.596"W	2.35	
4018.00	1.590	248.730	3955.40	-600.13	181.59	-608.46	40°07'19.997"N	104°54'19.651"W	2.79	
4113.00	1.500	185.710	4050.37	-601.55	179.88	-609.81	40°07'19.980"N	104°54'19.669"W	1.70	
4207.00	1.500	201.620	4144.34	-602.23	177.51	-610.39	40°07'19.957"N	104°54'19.676"W	0.44	
4302.00	0.490	356.520	4239.33	-602.74	176.76	-610.87	40°07'19.949"N	104°54'19.682"W	2.06	



Actual Wellpath Report

LEONARD 3N AWP

Page 3 of 7



REFERENCE WELLPATH IDENTIFICATION

Operator	EXTRACTION OIL & GAS	Slot	SLOT#02 LEONARD 3N (1908'FSL & 494'FWL, SEC.21)
Area	COLORADO	Well	LEONARD 3N
Field	WELD COUNTY (NAD83/TRUE NORTH)	Wellbore	LEONARD 3N AWB
Facility	SEC.21-T02N-R67W		

WELLPATH DATA (111 stations)

MD [ft]	Inclination [°]	Azimuth [°]	TVD [ft]	Vert Sect [ft]	North [ft]	East [ft]	Latitude	Longitude	DLS [°/100ft]	Comments
4396.00	0.490	352.730	4333.33	-602.78	177.56	-610.95	40°07'19.957"N	104°54'19.683"W	0.03	
4491.00	0.620	347.750	4428.32	-602.91	178.47	-611.11	40°07'19.966"N	104°54'19.685"W	0.15	
4586.00	0.800	339.330	4523.32	-603.20	179.59	-611.45	40°07'19.977"N	104°54'19.690"W	0.22	
4680.00	0.710	317.920	4617.31	-603.78	180.64	-612.07	40°07'19.988"N	104°54'19.698"W	0.31	
4775.00	0.710	334.310	4712.30	-604.39	181.60	-612.72	40°07'19.997"N	104°54'19.706"W	0.21	
4870.00	0.400	333.740	4807.30	-604.75	182.43	-613.12	40°07'20.006"N	104°54'19.711"W	0.33	
4964.00	0.800	296.540	4901.29	-605.46	183.02	-613.86	40°07'20.011"N	104°54'19.721"W	0.57	
5059.00	1.500	285.830	4996.27	-607.22	183.65	-615.65	40°07'20.018"N	104°54'19.744"W	0.77	
5153.00	0.880	298.610	5090.25	-609.01	184.33	-617.46	40°07'20.024"N	104°54'19.767"W	0.71	
5248.00	1.190	295.310	5185.24	-610.50	185.11	-618.99	40°07'20.032"N	104°54'19.787"W	0.33	
5342.00	1.100	299.940	5279.22	-612.13	185.97	-620.66	40°07'20.041"N	104°54'19.808"W	0.14	
5437.00	0.880	295.130	5374.20	-613.55	186.74	-622.11	40°07'20.048"N	104°54'19.827"W	0.25	
5532.00	1.020	293.410	5469.19	-614.95	187.38	-623.55	40°07'20.054"N	104°54'19.845"W	0.15	
5626.00	1.100	302.710	5563.17	-616.44	188.20	-625.07	40°07'20.063"N	104°54'19.865"W	0.20	
5721.00	1.280	291.650	5658.15	-618.16	189.09	-626.83	40°07'20.071"N	104°54'19.888"W	0.31	
5815.00	0.880	273.630	5752.14	-619.83	189.52	-628.52	40°07'20.076"N	104°54'19.910"W	0.55	
5910.00	0.880	258.640	5847.13	-621.28	189.42	-629.97	40°07'20.075"N	104°54'19.928"W	0.24	
6005.00	0.710	235.330	5942.12	-622.50	188.94	-631.17	40°07'20.070"N	104°54'19.944"W	0.38	
6099.00	0.880	219.820	6036.11	-623.48	188.06	-632.11	40°07'20.061"N	104°54'19.956"W	0.29	
6193.00	1.100	195.940	6130.09	-624.25	186.64	-632.82	40°07'20.047"N	104°54'19.965"W	0.49	
6288.00	1.020	219.640	6225.08	-625.10	185.11	-633.61	40°07'20.032"N	104°54'19.975"W	0.47	
6383.00	1.020	233.040	6320.06	-626.36	183.95	-634.82	40°07'20.021"N	104°54'19.991"W	0.25	
6477.00	1.190	226.210	6414.05	-627.79	182.77	-636.19	40°07'20.009"N	104°54'20.008"W	0.23	
6572.00	1.410	221.230	6509.02	-629.34	181.21	-637.68	40°07'19.993"N	104°54'20.027"W	0.26	
6667.00	1.900	216.120	6603.98	-631.12	179.06	-639.38	40°07'19.972"N	104°54'20.049"W	0.54	
6785.00	2.920	206.250	6721.88	-633.79	174.78	-641.86	40°07'19.930"N	104°54'20.081"W	0.93	
6879.00	8.220	109.340	6815.53	-628.69	170.40	-636.57	40°07'19.887"N	104°54'20.013"W	9.62	
6974.00	17.190	94.320	6908.13	-608.39	167.09	-616.11	40°07'19.854"N	104°54'19.750"W	9.99	
7068.00	24.700	93.920	6995.86	-575.04	164.69	-582.62	40°07'19.830"N	104°54'19.319"W	7.99	
7163.00	31.600	92.250	7079.57	-530.45	162.36	-537.89	40°07'19.807"N	104°54'18.743"W	7.31	

REFERENCE WELLPATH IDENTIFICATION

Operator	EXTRACTION OIL & GAS	Slot	SLOT#02 LEONARD 3N (1908'FSL & 494'FWL, SEC.21)
Area	COLORADO	Well	LEONARD 3N
Field	WELD COUNTY (NAD83/TRUE NORTH)	Wellbore	LEONARD 3N AWB
Facility	SEC.21-T02N-R67W		

WELLPATH DATA (111 stations) † = interpolated/extrapolated station

MD [ft]	Inclination [°]	Azimuth [°]	TVD [ft]	Vert Sect [ft]	North [ft]	East [ft]	Latitude	Longitude	DLS [°/100ft]	Comments
7257.00	39.020	89.120	7156.23	-476.24	161.84	-483.62	40°07'19.802"N	104°54'18.044"W	8.12	
7352.00	44.900	88.020	7226.84	-412.77	163.46	-420.15	40°07'19.818"N	104°54'17.227"W	6.24	
7447.00	54.000	90.750	7288.54	-340.71	164.12	-348.06	40°07'19.825"N	104°54'16.299"W	9.82	
7542.00	63.590	90.530	7337.71	-259.67	163.22	-266.90	40°07'19.816"N	104°54'15.255"W	10.10	
7636.00	71.810	88.410	7373.35	-172.83	164.07	-180.02	40°07'19.824"N	104°54'14.136"W	8.99	
7731.00	81.000	87.530	7395.66	-80.59	167.35	-87.84	40°07'19.857"N	104°54'12.949"W	9.72	
7783.00†	85.379	87.189	7401.82	-28.97	169.73	-36.27	40°07'19.880"N	104°54'12.286"W	8.45	CROSSED 460' SETBACK (2078'FSL & 460'FEL, SEC.21)
7826.00	89.000	86.910	7403.93	13.97	171.94	6.61	40°07'19.902"N	104°54'11.734"W	8.45	
7920.00	88.380	89.820	7406.08	107.92	174.62	100.54	40°07'19.928"N	104°54'10.525"W	3.16	
8109.00	90.500	89.510	7407.93	296.77	175.73	289.52	40°07'19.939"N	104°54'08.092"W	1.13	
8204.00	91.030	89.340	7406.66	391.71	176.68	384.50	40°07'19.949"N	104°54'06.869"W	0.59	
8299.00	90.010	89.030	7405.79	486.67	178.03	479.49	40°07'19.962"N	104°54'05.647"W	1.12	
8393.00	87.720	89.650	7407.66	580.60	179.12	573.46	40°07'19.973"N	104°54'04.437"W	2.52	
8488.00	87.980	89.820	7411.22	675.46	179.56	668.39	40°07'19.977"N	104°54'03.215"W	0.33	
8676.00	89.700	88.940	7415.03	863.32	181.59	856.33	40°07'19.997"N	104°54'00.796"W	1.03	
8771.00	89.400	89.430	7415.77	958.28	182.94	951.32	40°07'20.010"N	104°53'59.573"W	0.60	
8866.00	90.500	90.530	7415.86	1053.19	182.97	1046.31	40°07'20.011"N	104°53'58.350"W	1.64	
8961.00	87.580	87.930	7417.45	1148.12	184.25	1141.27	40°07'20.023"N	104°53'57.128"W	4.12	
9055.00	88.110	87.130	7420.98	1242.05	188.30	1235.12	40°07'20.063"N	104°53'55.920"W	1.02	
9150.00	87.500	87.530	7424.62	1336.98	192.72	1329.95	40°07'20.107"N	104°53'54.699"W	0.77	
9244.00	91.210	88.630	7425.68	1430.95	195.87	1423.87	40°07'20.138"N	104°53'53.490"W	4.12	
9338.00	90.720	89.430	7424.10	1524.90	197.46	1517.84	40°07'20.154"N	104°53'52.280"W	1.00	
9433.00	90.990	90.040	7422.68	1619.82	197.90	1612.83	40°07'20.158"N	104°53'51.057"W	0.70	
9528.00	91.600	88.320	7420.53	1714.76	199.26	1707.79	40°07'20.171"N	104°53'49.835"W	1.92	
9622.00	90.190	91.320	7419.06	1808.66	199.55	1801.77	40°07'20.174"N	104°53'48.625"W	3.53	
9718.00	90.500	90.350	7418.48	1904.50	198.15	1897.75	40°07'20.160"N	104°53'47.390"W	1.06	
9812.00	91.210	88.240	7417.08	1998.44	199.31	1991.73	40°07'20.172"N	104°53'46.180"W	2.37	
9907.00	88.290	91.630	7417.50	2093.33	199.42	2086.70	40°07'20.173"N	104°53'44.957"W	4.71	
10002.00	88.690	91.760	7420.00	2188.05	196.61	2181.63	40°07'20.145"N	104°53'43.735"W	0.44	
10096.00	89.880	90.040	7421.17	2281.87	195.13	2275.61	40°07'20.130"N	104°53'42.526"W	2.22	



Actual Wellpath Report

LEONARD 3N AWP

Page 5 of 7



REFERENCE WELLPATH IDENTIFICATION

Operator	EXTRACTION OIL & GAS	Slot	SLOT#02 LEONARD 3N (1908'FSL & 494'FWL, SEC.21)
Area	COLORADO	Well	LEONARD 3N
Field	WELD COUNTY (NAD83/TRUE NORTH)	Wellbore	LEONARD 3N AWB
Facility	SEC.21-T02N-R67W		

WELLPATH DATA (111 stations)

MD [ft]	Inclination [°]	Azimuth [°]	TVD [ft]	Vert Sect [ft]	North [ft]	East [ft]	Latitude	Longitude	DLS [°/100ft]	Comments
10191.00	90.590	90.350	7420.78	2376.77	194.81	2370.60	40°07'20.127"N	104°53'41.303"W	0.82	
10286.00	90.720	90.750	7419.70	2471.63	193.90	2465.59	40°07'20.118"N	104°53'40.080"W	0.44	
10380.00	90.990	90.350	7418.29	2565.49	193.00	2559.58	40°07'20.109"N	104°53'38.870"W	0.51	
10474.00	87.720	92.730	7419.35	2659.24	190.47	2653.52	40°07'20.084"N	104°53'37.661"W	4.30	
10569.00	88.290	91.320	7422.66	2753.89	187.12	2748.40	40°07'20.050"N	104°53'36.440"W	1.60	
10663.00	88.380	90.750	7425.39	2847.68	185.42	2842.34	40°07'20.034"N	104°53'35.230"W	0.61	
10852.00	89.790	90.750	7428.41	3036.35	182.95	3031.30	40°07'20.009"N	104°53'32.798"W	0.75	
10947.00	89.700	89.650	7428.83	3131.25	182.61	3126.30	40°07'20.005"N	104°53'31.575"W	1.16	
11041.00	90.720	88.540	7428.49	3225.21	184.10	3220.28	40°07'20.020"N	104°53'30.365"W	1.60	
11135.00	91.520	87.930	7426.65	3319.18	186.99	3314.22	40°07'20.048"N	104°53'29.156"W	1.07	
11229.00	90.280	88.720	7425.17	3413.16	189.74	3408.16	40°07'20.076"N	104°53'27.947"W	1.56	
11324.00	90.990	88.240	7424.12	3508.14	192.26	3503.12	40°07'20.100"N	104°53'26.724"W	0.90	
11418.00	88.690	89.650	7424.38	3602.10	193.99	3597.10	40°07'20.117"N	104°53'25.515"W	2.87	
11512.00	88.690	89.340	7426.53	3696.03	194.82	3691.07	40°07'20.125"N	104°53'24.305"W	0.33	
11606.00	89.400	89.820	7428.10	3789.95	195.51	3785.05	40°07'20.132"N	104°53'23.095"W	0.91	
11701.00	90.500	88.540	7428.18	3884.91	196.87	3880.04	40°07'20.145"N	104°53'21.873"W	1.78	
11795.00	90.010	90.040	7427.76	3978.86	198.03	3974.03	40°07'20.157"N	104°53'20.663"W	1.68	
11890.00	91.600	89.650	7426.43	4073.77	198.29	4069.02	40°07'20.159"N	104°53'19.440"W	1.72	
11984.00	89.620	91.720	7425.43	4167.62	197.16	4162.99	40°07'20.148"N	104°53'18.230"W	3.05	
12061.00	90.900	92.510	7425.08	4244.37	194.32	4239.94	40°07'20.120"N	104°53'17.240"W	1.95	BAKER DRILLED USING THIRD PARTY MWD-LAST SURVEY (2099'FSL & 371'FEL, SEC.21)
12120.00	90.900	92.510	7424.15	4303.14	191.74	4298.87	40°07'20.094"N	104°53'16.481"W	0.00	PROJECTION TO BIT (2096'FSL & 430'FEL, SEC.21)



Actual Wellpath Report

LEONARD 3N AWP

Page 6 of 7



REFERENCE WELLPATH IDENTIFICATION

Operator	EXTRACTION OIL & GAS	Slot	SLOT#02 LEONARD 3N (1908'FSL & 494'FWL, SEC.21)
Area	COLORADO	Well	LEONARD 3N
Field	WELD COUNTY (NAD83/TRUE NORTH)	Wellbore	LEONARD 3N AWB
Facility	SEC.21-T02N-R67W		

TARGETS

Name	TVD [ft]	North [ft]	East [ft]	Grid East [US ft]	Grid North [US ft]	Latitude	Longitude	Shape
SEC.21-T02N-R67W BOTTOM HALF	1.00	27.69	-0.28	3166872.30	1287776.78	40°07'18.476"N	104°54'11.822"W	polygon
SEC.21-T02N-R67W TOP HALF	1.00	27.69	-0.28	3166872.30	1287776.78	40°07'18.476"N	104°54'11.822"W	polygon
LEONARD 3N BHL (2090'FSL & 460'FEL, SEC.21)	7420.00	185.48	4328.63	3171199.87	1287963.70	40°07'20.032"N	104°53'16.098"W	point
LEONARD 3N LP (2090'FSL & 460'FWL, SEC.21)	7420.00	181.76	-35.83	3166835.72	1287930.61	40°07'19.999"N	104°54'12.280"W	point
SEC.21-T02N-R67W 460'FEL/FWL SETBACK	7461.00	27.69	-0.28	3166872.30	1287776.78	40°07'18.476"N	104°54'11.822"W	polygon

WELLPATH COMPOSITION - Ref Wellbore: LEONARD 3N AWB Ref Wellpath: LEONARD 3N AWP

Start MD [ft]	End MD [ft]	Positional Uncertainty Model	Log Name/Comment	Wellbore
28.00	1532.50	ISCWSA MWD, Rev. 4 (Standard)	TOTAL SURVEYS <222.50-1532.50>	LEONARD 3N AWB
1532.50	12061.00	ISCWSA MWD, Rev. 4 (Standard)	BAKER DRILLED USING THIRD PARTY MWD <1654-12061>	LEONARD 3N AWB
12061.00	12120.00	Blind Drilling (std)	Projection to bit	LEONARD 3N AWB



Actual Wellpath Report

LEONARD 3N AWP

Page 7 of 7



REFERENCE WELLPATH IDENTIFICATION			
Operator	EXTRACTION OIL & GAS	Slot	SLOT#02 LEONARD 3N (1908'FSL & 494'FWL, SEC.21)
Area	COLORADO	Well	LEONARD 3N
Field	WELD COUNTY (NAD83/TRUE NORTH)	Wellbore	LEONARD 3N AWP
Facility	SEC.21-T02N-R67W		

WELLPATH COMMENTS				
MD [ft]	Inclination [°]	Azimuth [°]	TVD [ft]	Comment
1532.50	14.370	291.940	1517.56	TIED TO SURFACE SURVEYS
1654.00	14.410	291.120	1635.25	BAKER DRILLED USING THIRD PARTY MWD-FIRST SURVEY
7783.00	85.379	87.189	7401.82	CROSSED 460' SETBACK (2078'FSL & 460'FEL, SEC.21)
12061.00	90.900	92.510	7425.08	BAKER DRILLED USING THIRD PARTY MWD-LAST SURVEY (2099'FSL & 371'FEL, SEC.21)
12120.00	90.900	92.510	7424.15	PROJECTION TO BIT (2096'FSL & 430'FEL, SEC.21)