

OPERATOR: **Extraction Oil & Gas**

WELL NAME: **Leonard 2N**

FIELD NAME: DJ Basin - Wattenberg

DRILLING RIG: Cyclone 37

API #: 05-123-45045

LAT/LONG: 40.121799, -104.903284

SURFACE HOLE: NWSW S21-T2N-R67W, 1936' FSL, 494' FWL

BOTTOM HOLE: S21-T2N-R67W, 2430' FSL, 460' FEL

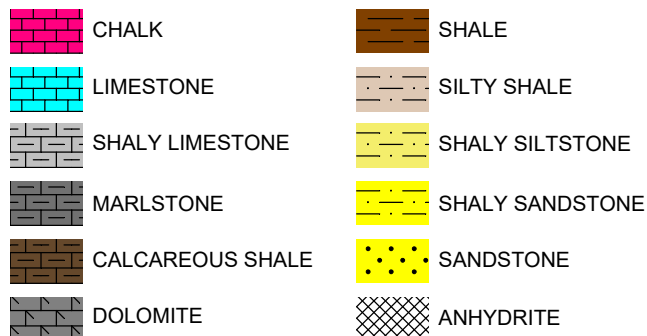


Earth Science Agency, LLC

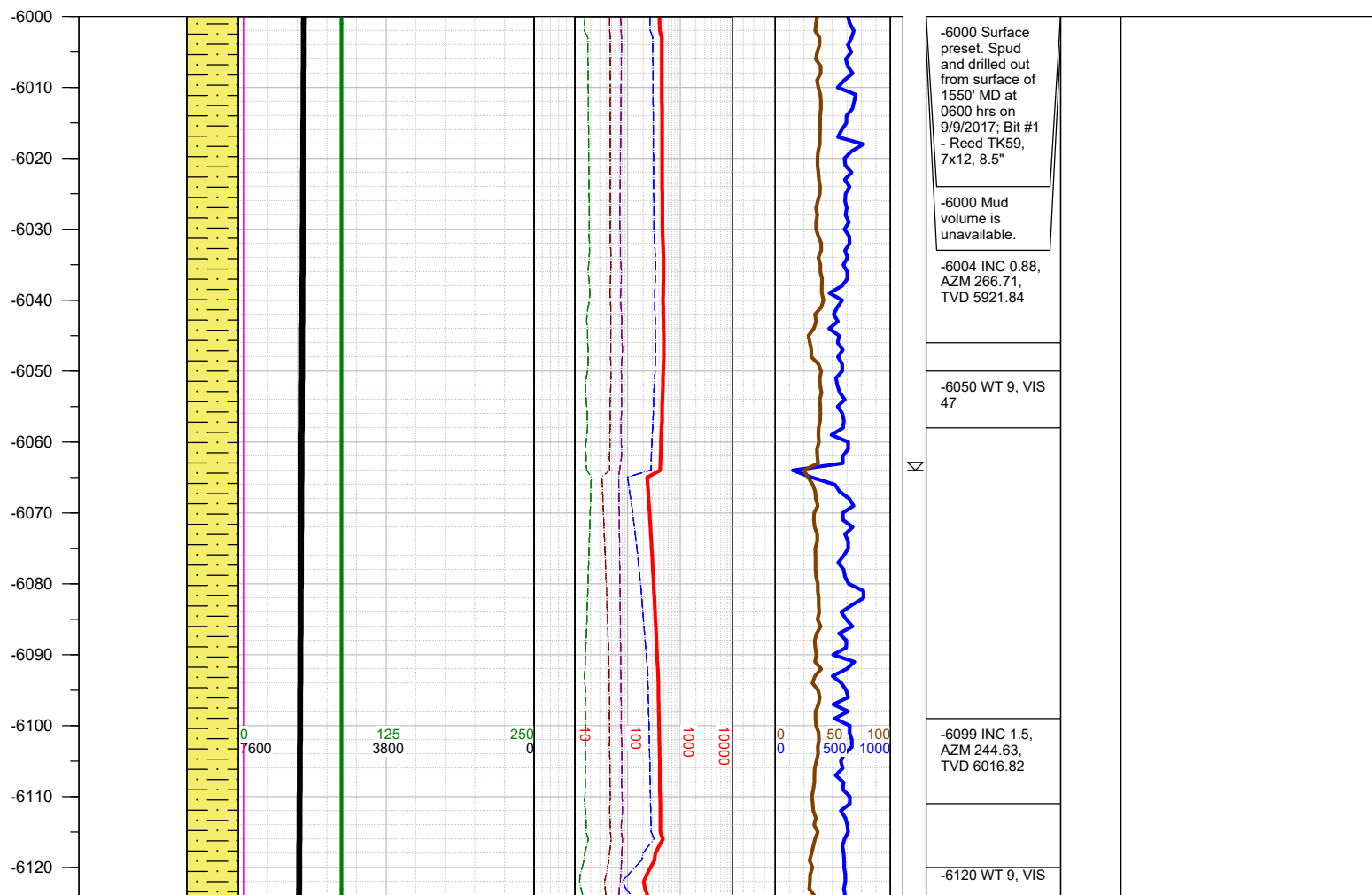
COUNTY: Weld
STATE: Colorado
GROUND ELEVATION: 5001'
KELLY BUSHING: 5029'
DRILLING FLUID: OBM
TVD VS. MD: 7517' / 12231'
SPUD DATE: September 9, 2017
TD DATE: September 11, 2017

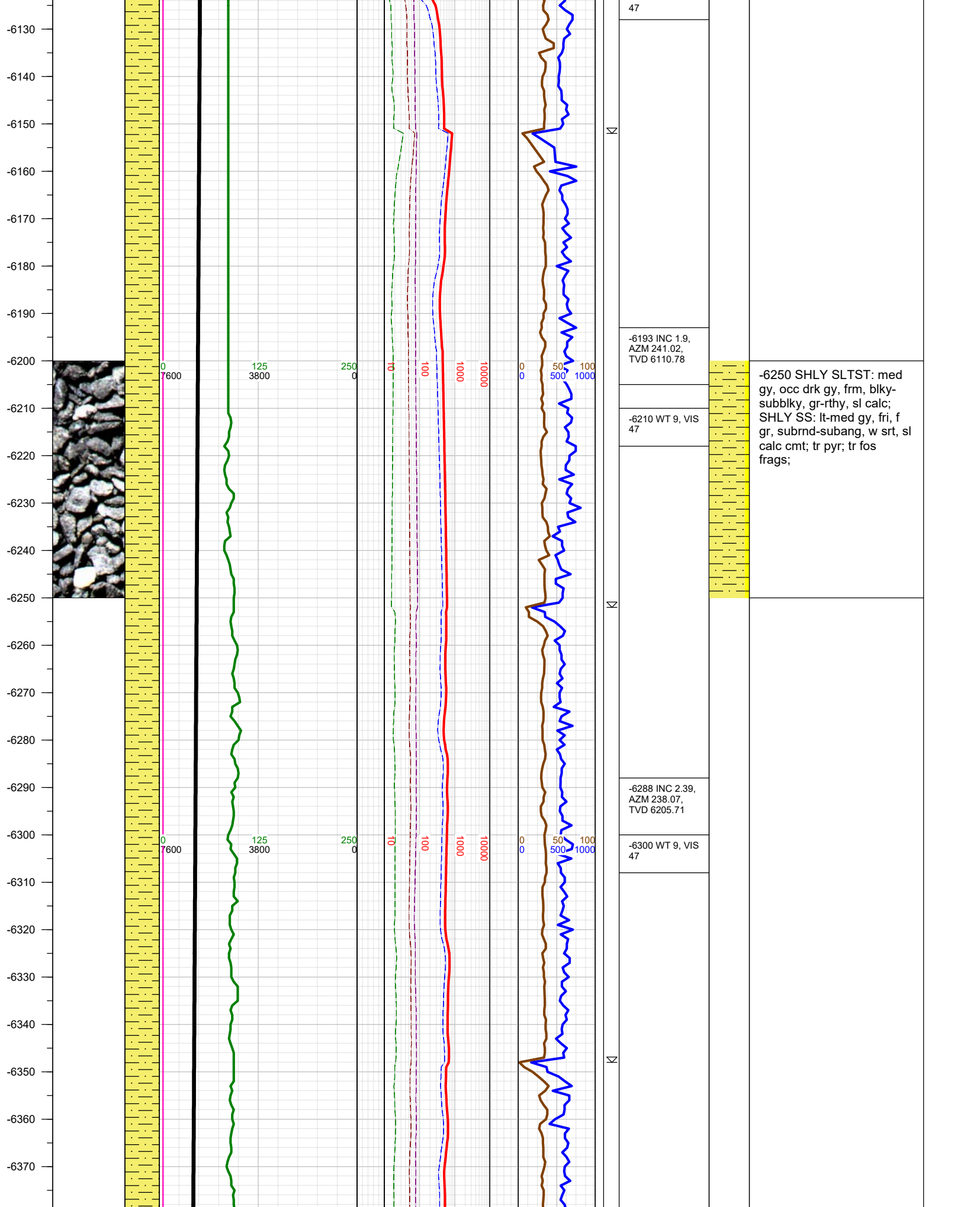
DEPTHS LOGGED: 6000' - 12231'
DATES LOGGED: September 9, 2017 - September 11, 2017
GEOLOGISTS: Kyle Welty, Levi Heintzelman
SCALE: 5" = 100'

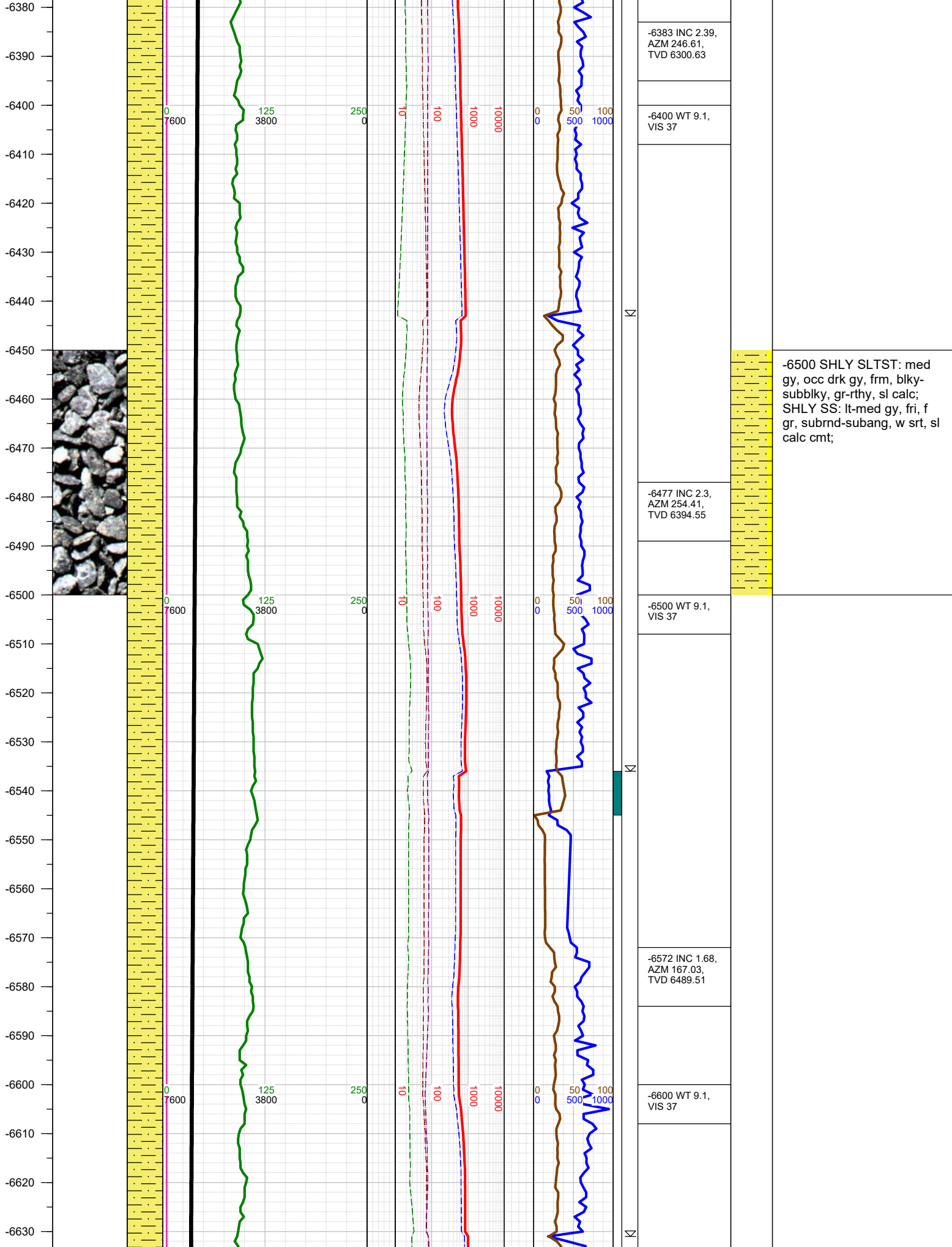
LEGEND

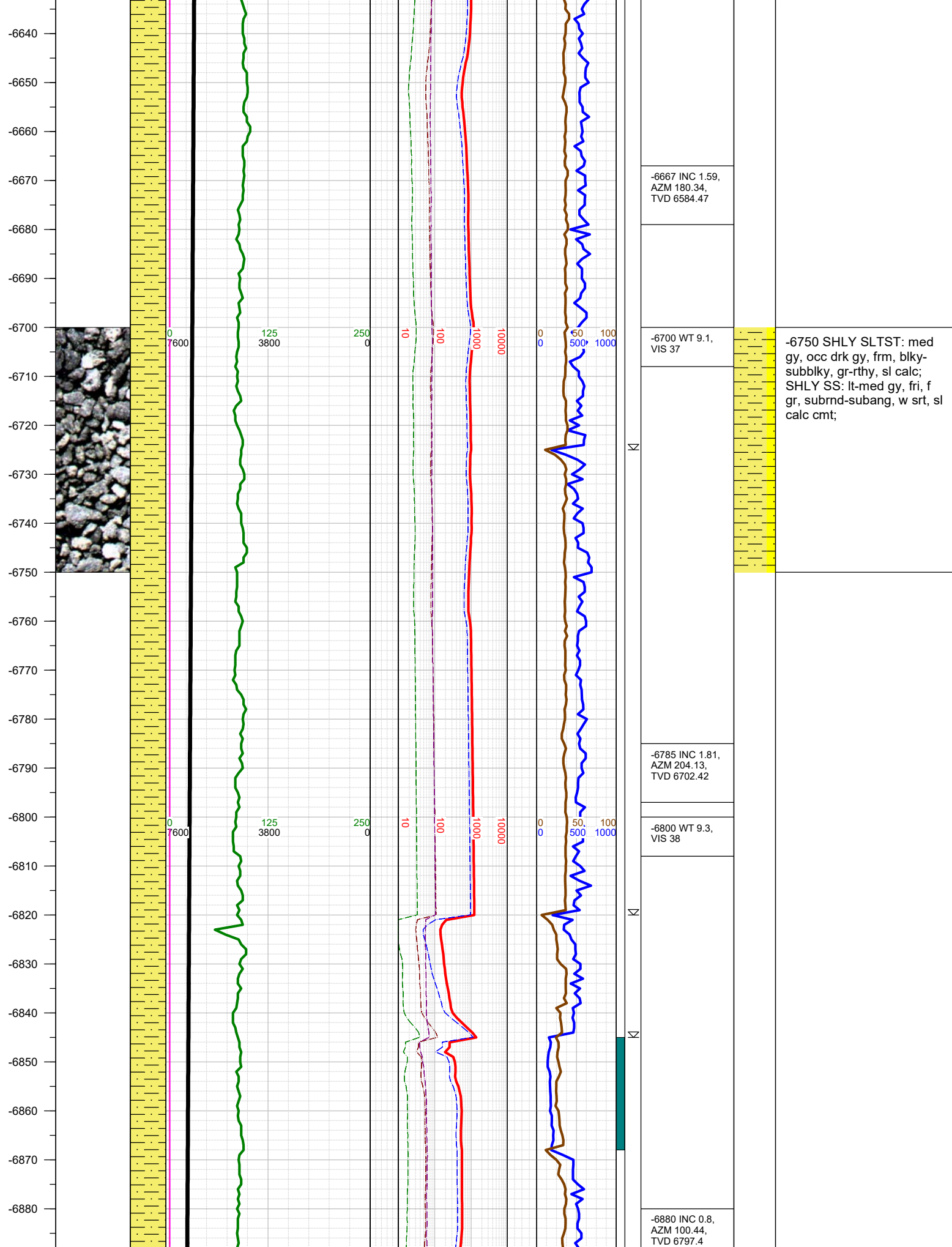


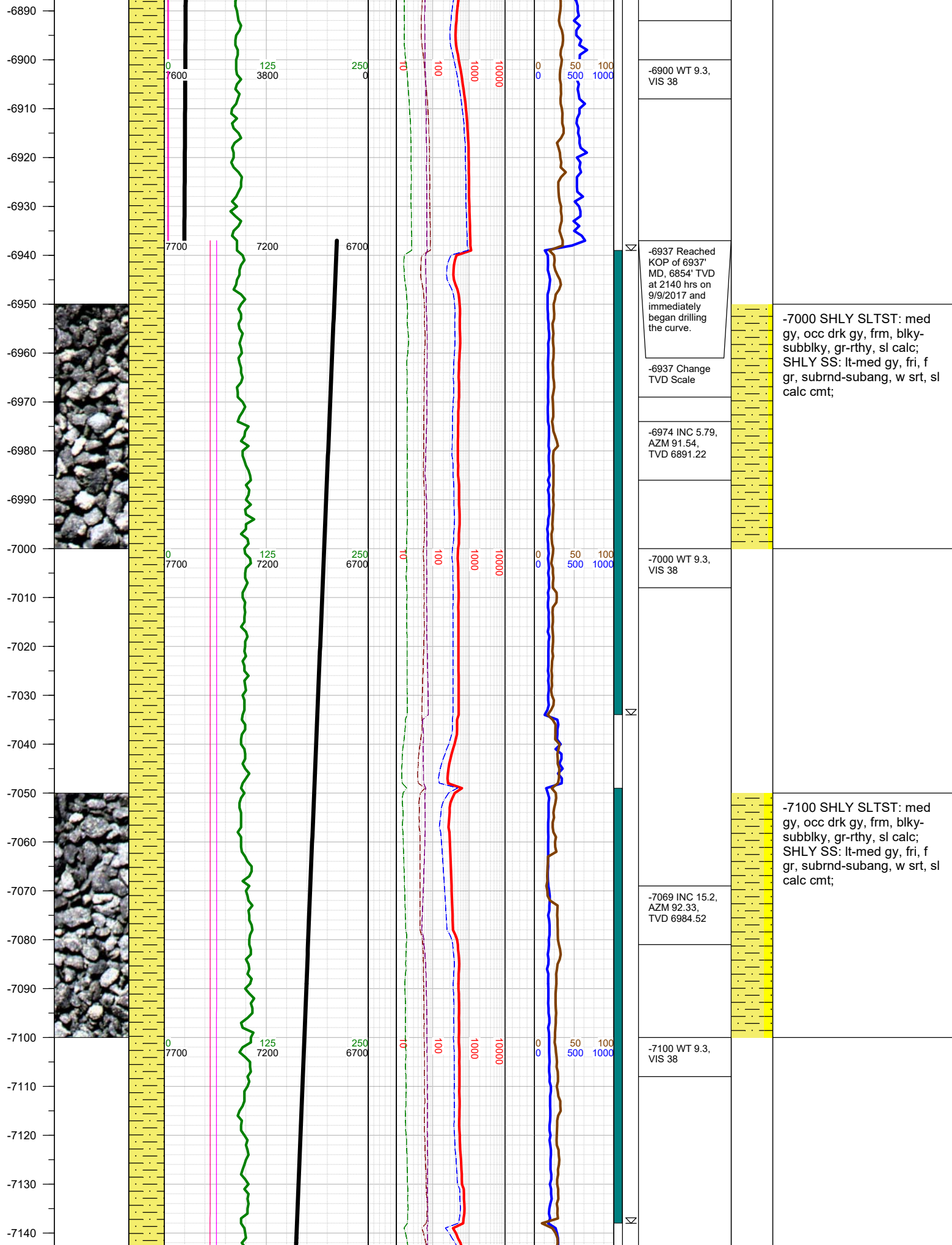
FORMATION \approx CONNECTION Δ MIDNIGHT NEW BIT GAS SHOW FAULT

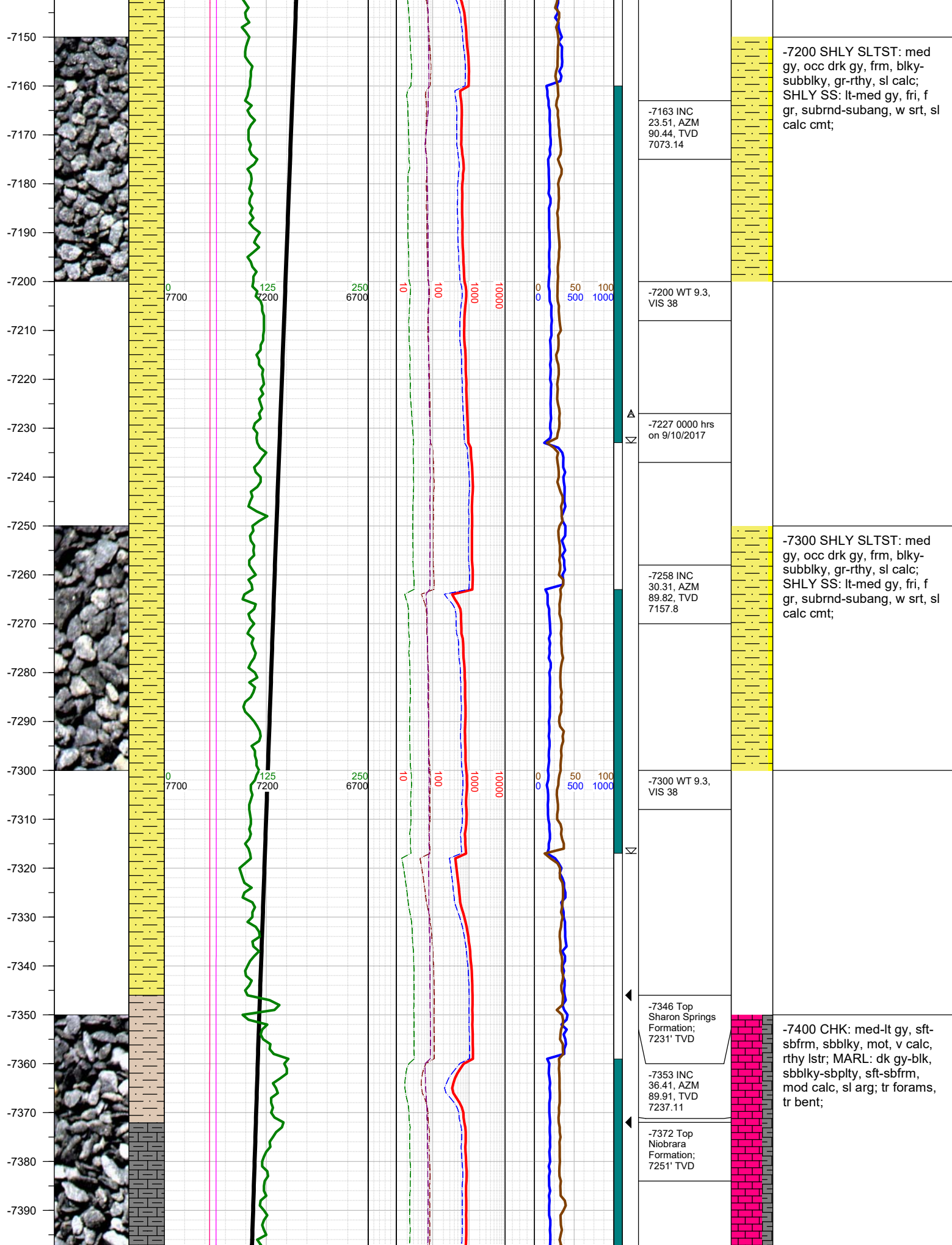


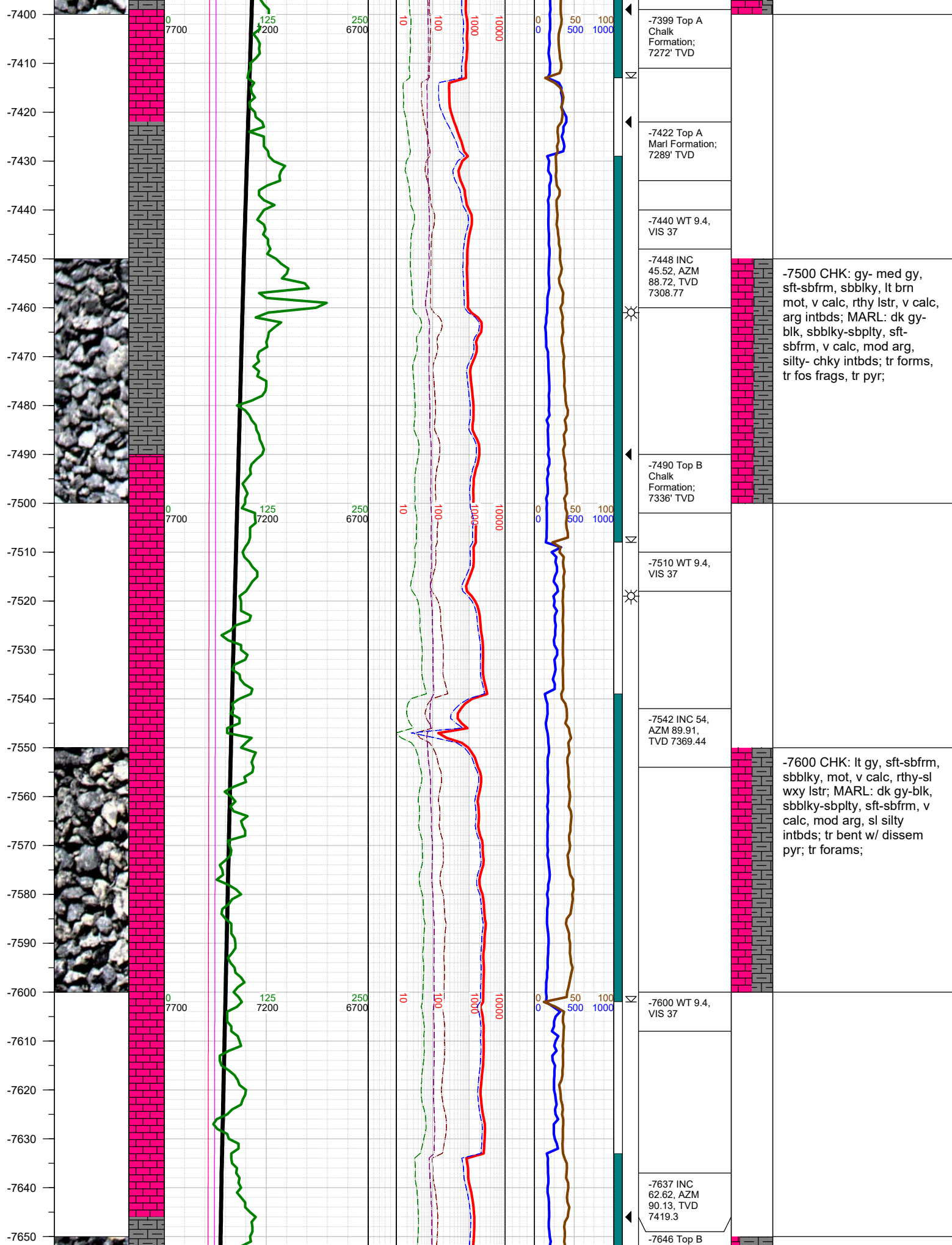


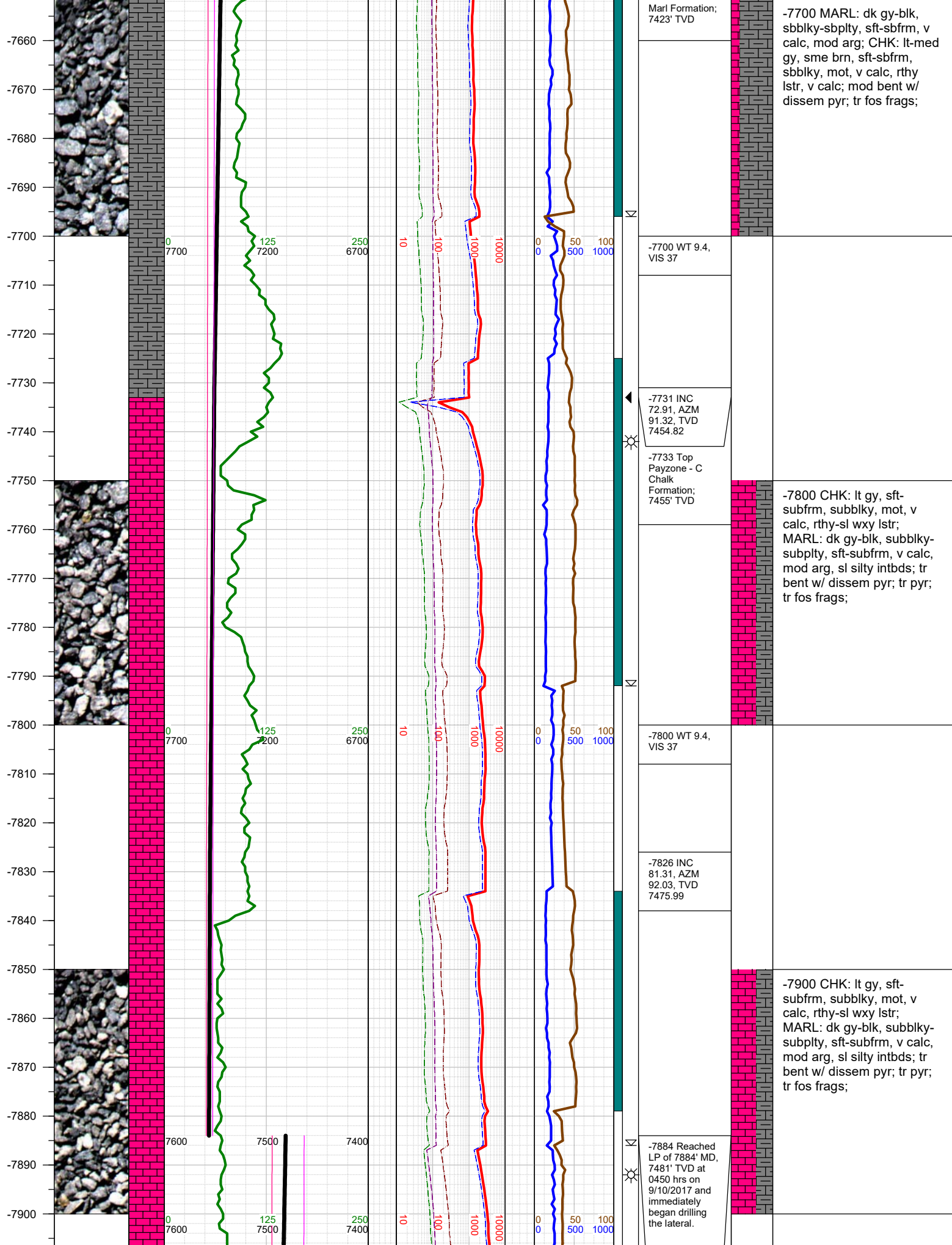




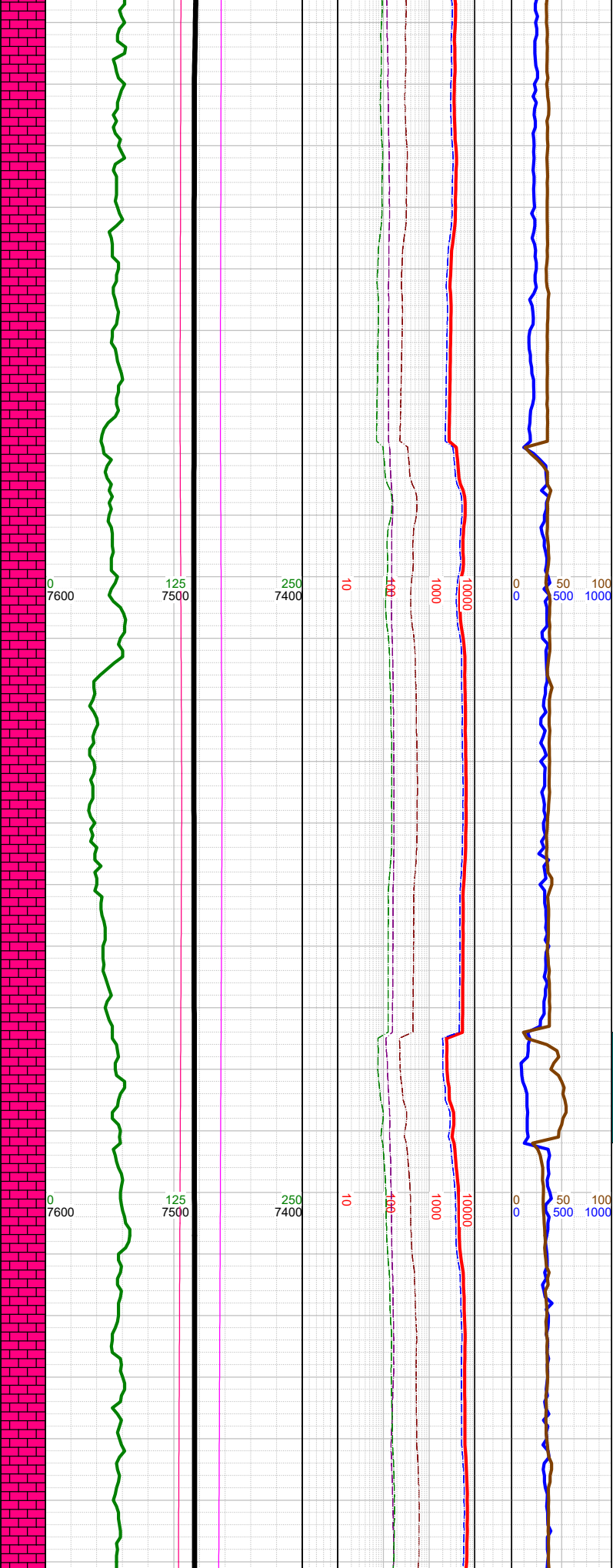




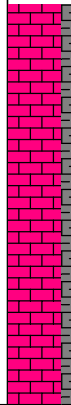




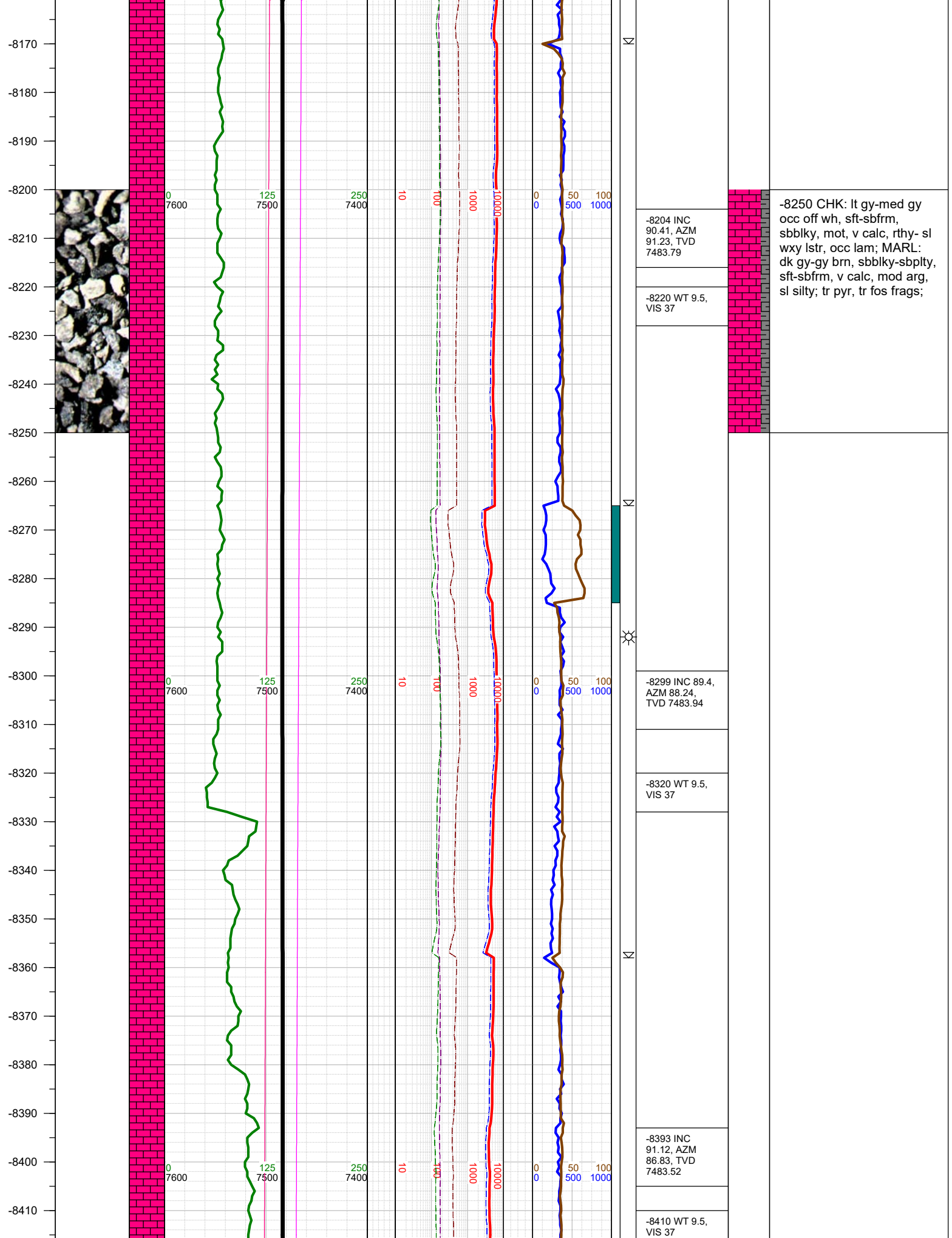
-7910
-7920
-7930
-7940
-7950
-7960
-7970
-7980
-7990
-8000
-8010
-8020
-8030
-8040
-8050
-8060
-8070
-8080
-8090
-8100
-8110
-8120
-8130
-8140
-8150
-8160



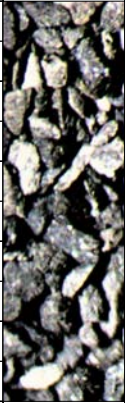
-7884 Change TVD Scale
-7920 INC 88.69, AZM 90.13, TVD 7484.18
-7940 WT 9.5, VIS 37
-8000 WT 9.5, VIS 37
-8015 INC 90.81, AZM 89.91, TVD 7484.6
-8100 WT 9.5, VIS 37
-8110 INC 89.88, AZM 90.75, TVD 7484.02



-8000 CHK: lt gy-med gy
occ off wh, sft-sbfrm,
sbbky, mot, v calc, rthy- sl
wxy lstr, occ lam; MARL:
dk gy-gy brn, sbbky-sbplty,
sft-sbfrm, v calc, mod arg,
sl silty; tr pyr, tr fos frags;



-8420
-8430
-8440
-8450
-8460
-8470
-8480
-8490
-8500
-8510
-8520
-8530
-8540
-8550
-8560
-8570
-8580
-8590
-8600
-8610
-8620
-8630
-8640
-8650
-8660
-8670



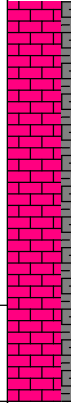
0 125 250 10 100 1000 10000 0 50 100
7600 7500 7400 100 500 1000



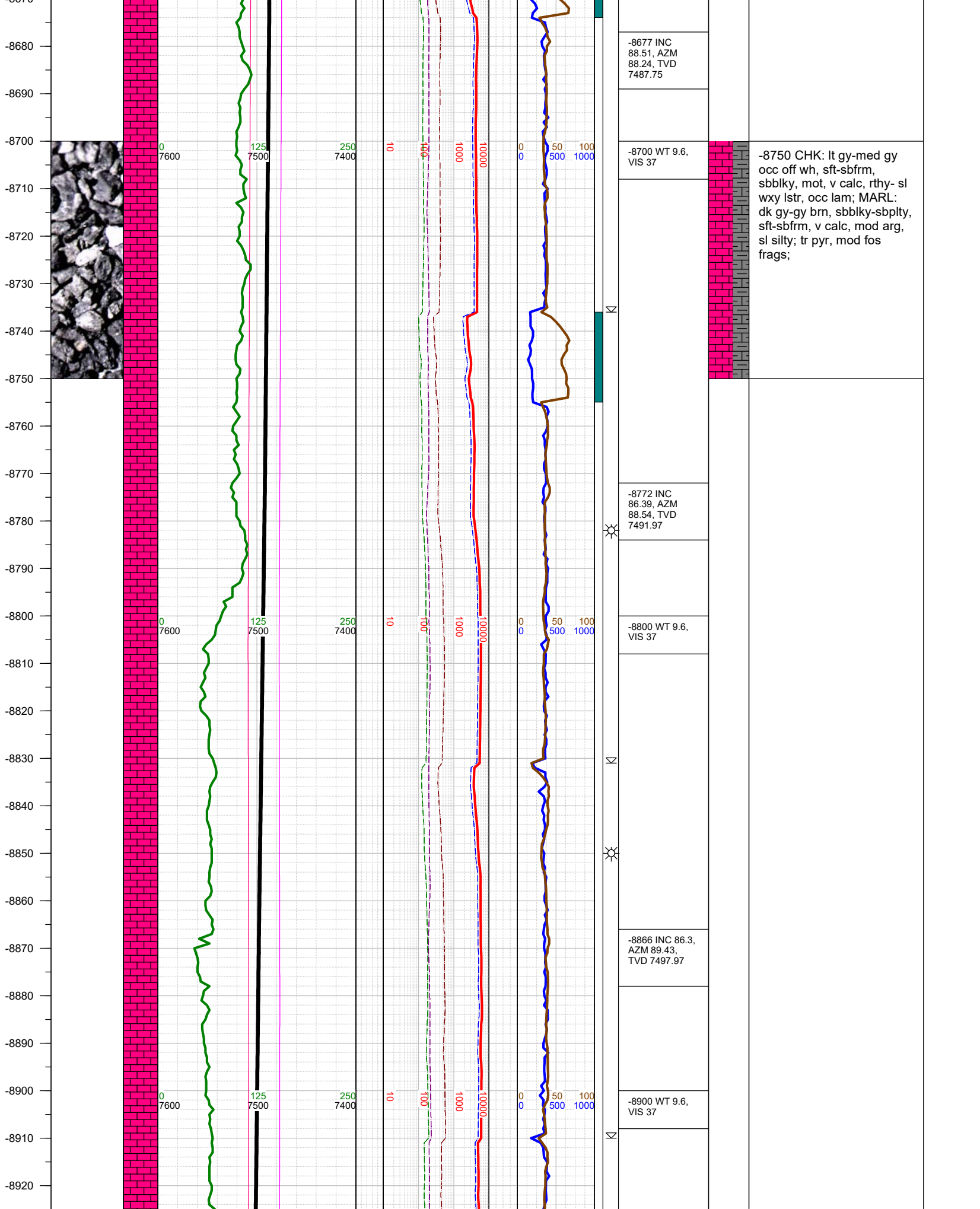
-8488 INC
88.91, AZM
89.51, TVD
7483.49

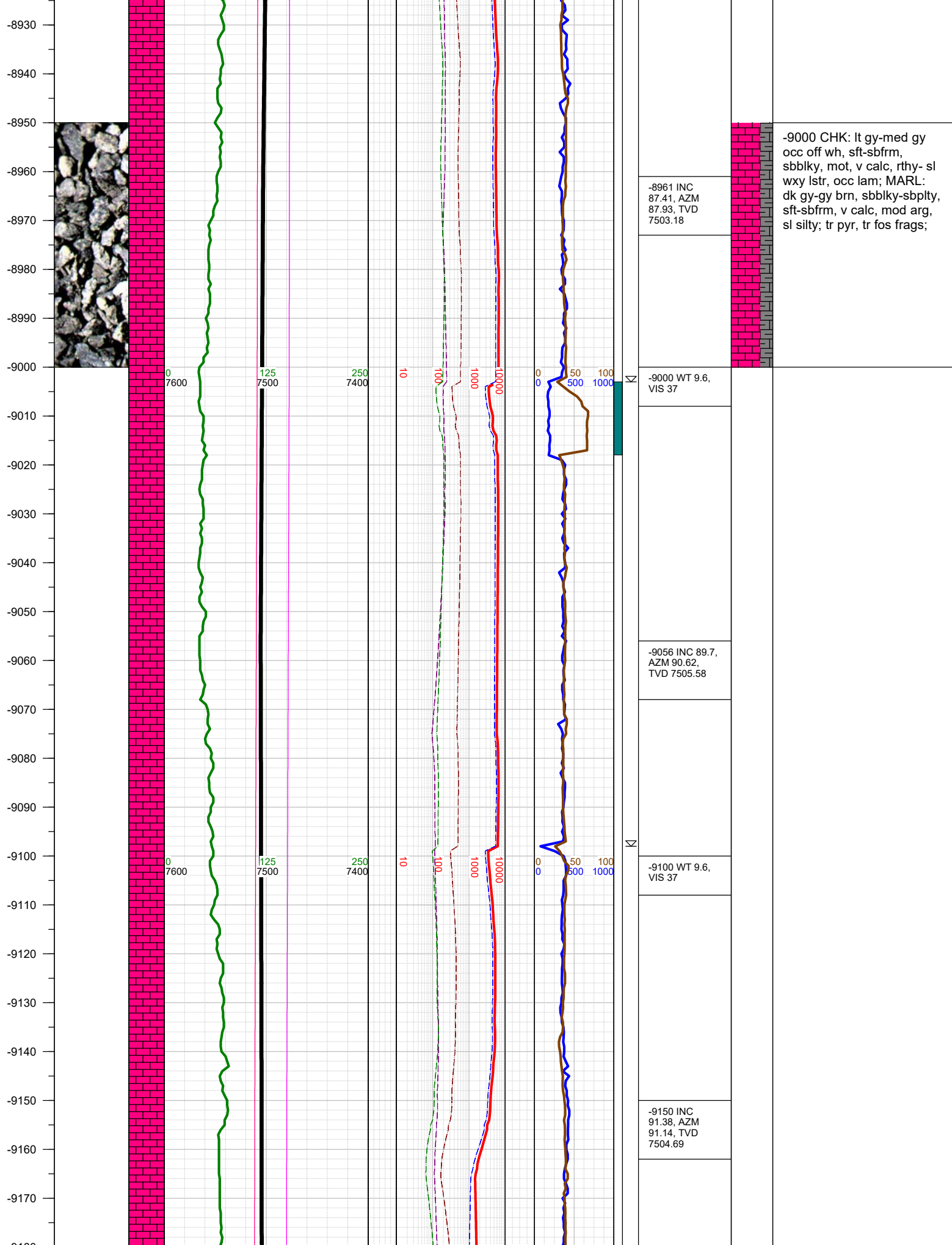
-8500 WT 9.6,
VIS 37

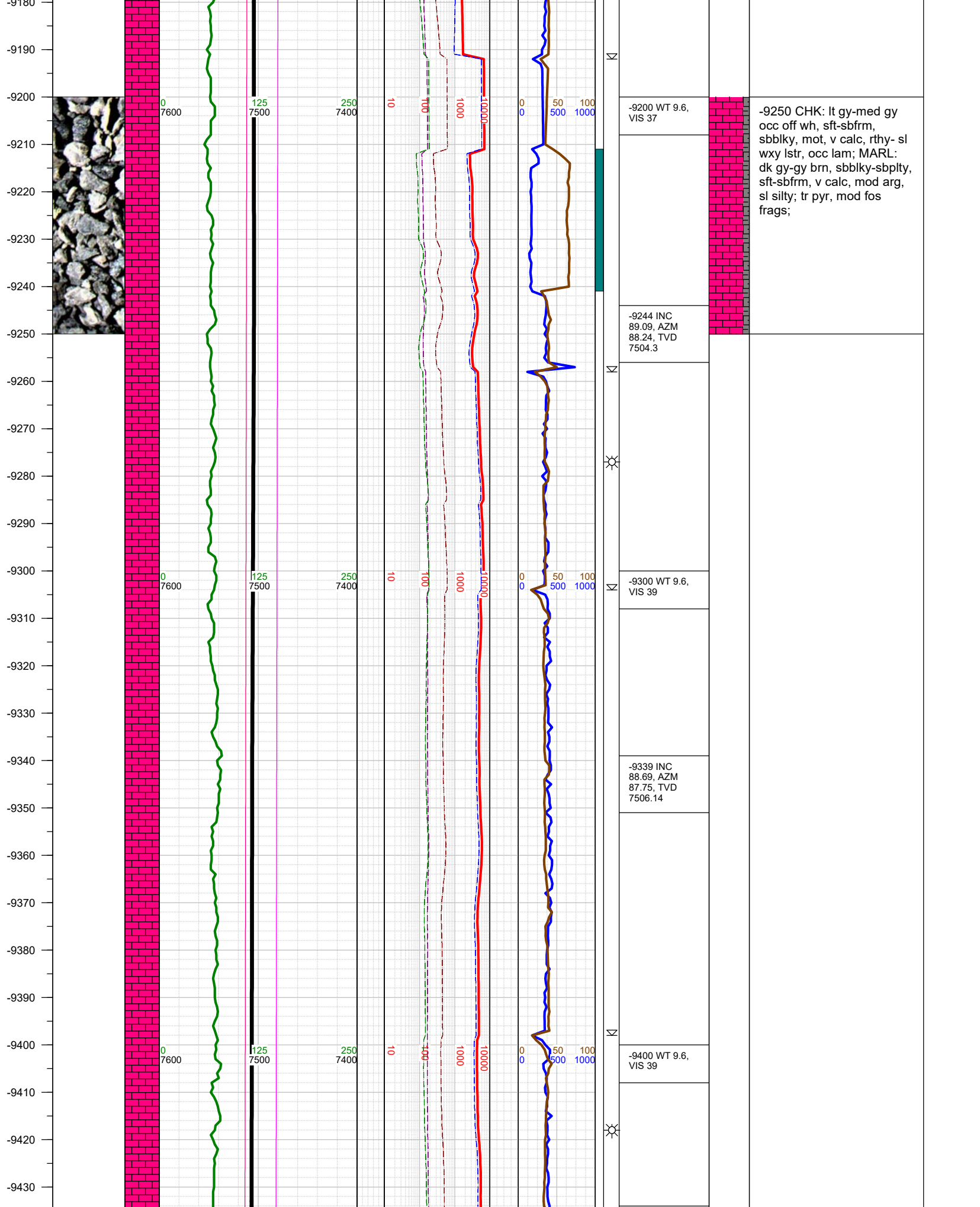
-8600 WT 9.6,
VIS 37

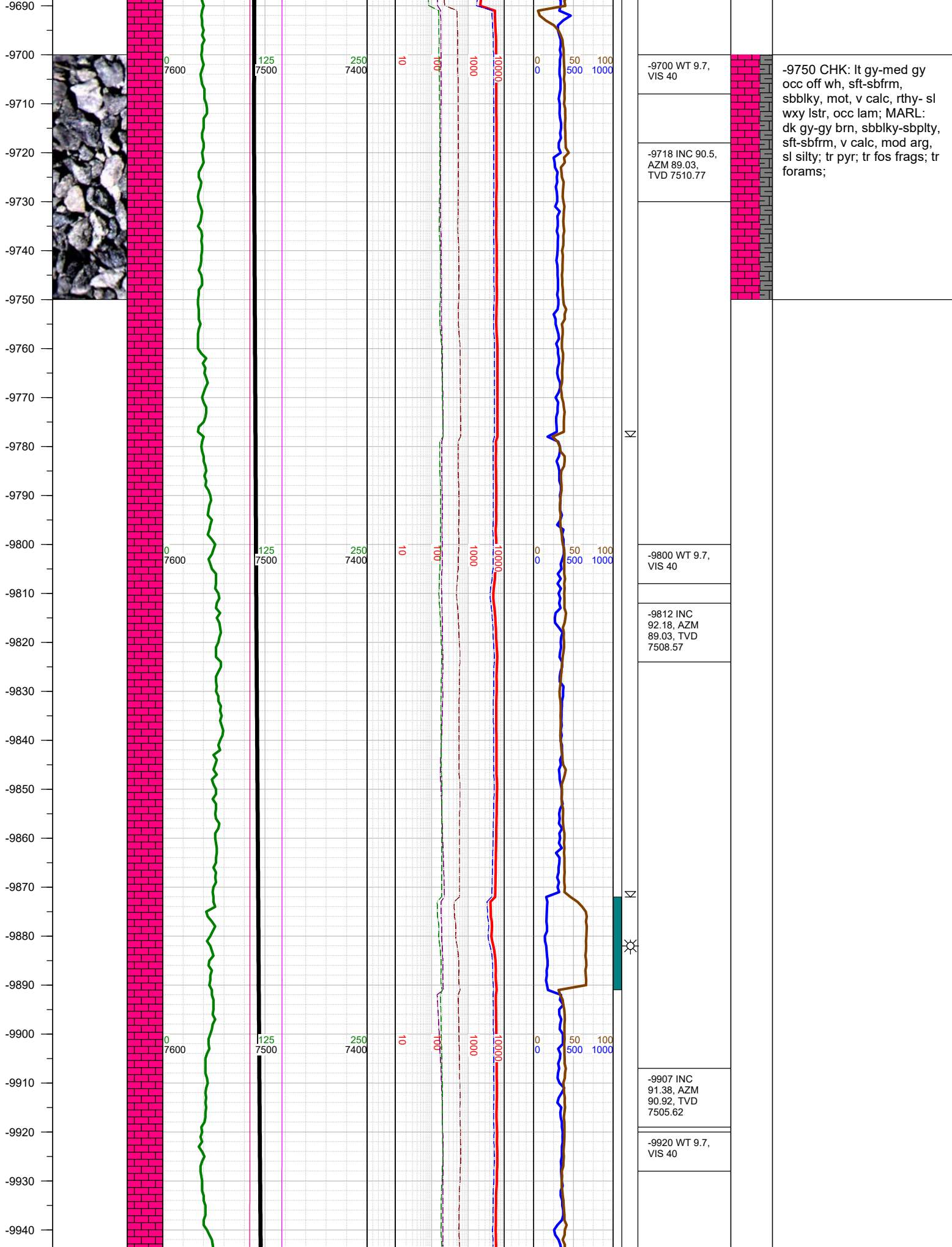


-8500 CHK: lt gy-med gy
occ off wh, sft-sbfrm,
sbbly, mot, v calc, rthy- sl
wxy lstr, occ lam; MARL:
dk gy-gy brn, sbbly-sbply,
sft-sbfrm, v calc, mod arg,
sl silty; tr pyr, mod fos
frags;









-9750 CHK: lt gy-med gy
occ off wh, sft-sbfrm,
sbbly, mot, v calc, rthy- sl
wxy lstr, occ lam; MARL:
dk gy-gy brn, sbbly-sbply,
sft-sbfrm, v calc, mod arg,
sl silty; tr pyr; tr fos frags; tr
forams;

