

UNITED STATES DEPARTMENT OF THE INTERIOR
BUREAU OF LAND MANAGEMENT

INSPECTION RECORD - ABANDONMENT

Case Number COC 55659	State CO.	Field Office CRAIG F.O.	Field Area	
Well Name: NINE MILE		Well Number: 2-1	Hazard? NO	
API No. 0508107103	Location 1/4, 1/4, S-T-R (Lat/Long) NWNE 8N 96W Sec 2		Spud Date	Status TAT-ABD
Operator/Representative EDKULKA		Rig/Contractor/Representative CASED HOLE SOLUTIONS TIPPERARY / SANTOS USA KEY 71 / SUPERIOR WELL SERVICES (Cementing)		
Well Type: (Circle One) <input type="checkbox"/> Dry Hole <input type="checkbox"/> Depleted Producer <input type="checkbox"/> Service Well <input type="checkbox"/> Water Well <input type="checkbox"/> Other (explain)				
INSP. TYPE PD	ACT. CODE PN	INSPECTOR EAGAN	OPEN DATE 7/11/06	CLOSED DATE 7/13/06
			OFFICE TIME 2.0	TRAVEL TIME 6
			INSPECT. TIME 18	TRIPS 3

PLUGGING OPERATIONS		WITNESSED		
		YES	NO	N/A
1. Plugs spotted across perforations or perforations isolated as approved if casing set?		<input checked="" type="checkbox"/>		
2. Plugs spotted at casing stubs?			<input checked="" type="checkbox"/>	
3. Open hole plugs spotted as approved?			<input checked="" type="checkbox"/>	
4. Retainers, bridge plugs, or packers set as approved?		<input checked="" type="checkbox"/>		
5. Cement quantities as approved?		<input checked="" type="checkbox"/>		
6. Method of verifying and testing plugs as approved?		<input checked="" type="checkbox"/>		
7. Pipe withdrawal rate satisfactory after spotting plugs?		<input checked="" type="checkbox"/>		
8. All annular spaces isolated to surface?		<input checked="" type="checkbox"/>		
9. Surface Cap Witnessed? (Circle one) <u>Above Ground</u> Below Ground			<input checked="" type="checkbox"/>	
10. INC issued?			<input checked="" type="checkbox"/>	

Remarks: **See AFMSS Remarks**

Cement and mechanical plug placement data (attach service company report, if available):

Inspection / Activities for COC55659

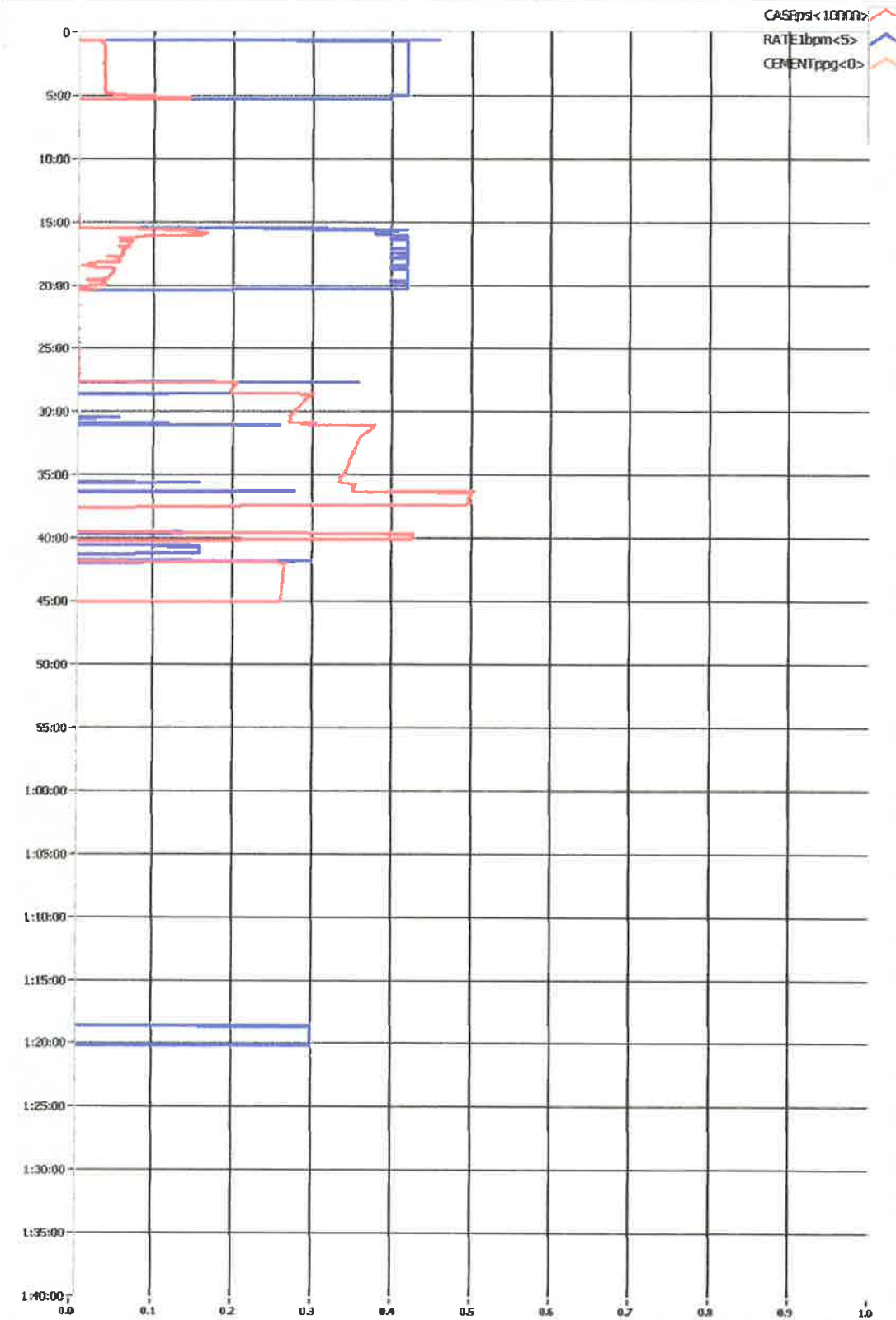
Act	Open Date	Close Date	Inspector	Purchaser/Contractor	Ofc Hrs	Tvl Hrs	Fld Hrs	Trips	Ttl Hrs
PN	07/11/2006	07/13/2006	EAGAN	KEY/ SUPERIOR WELL	2.0	6.0	18.0	3	26.0

Inspection Remarks

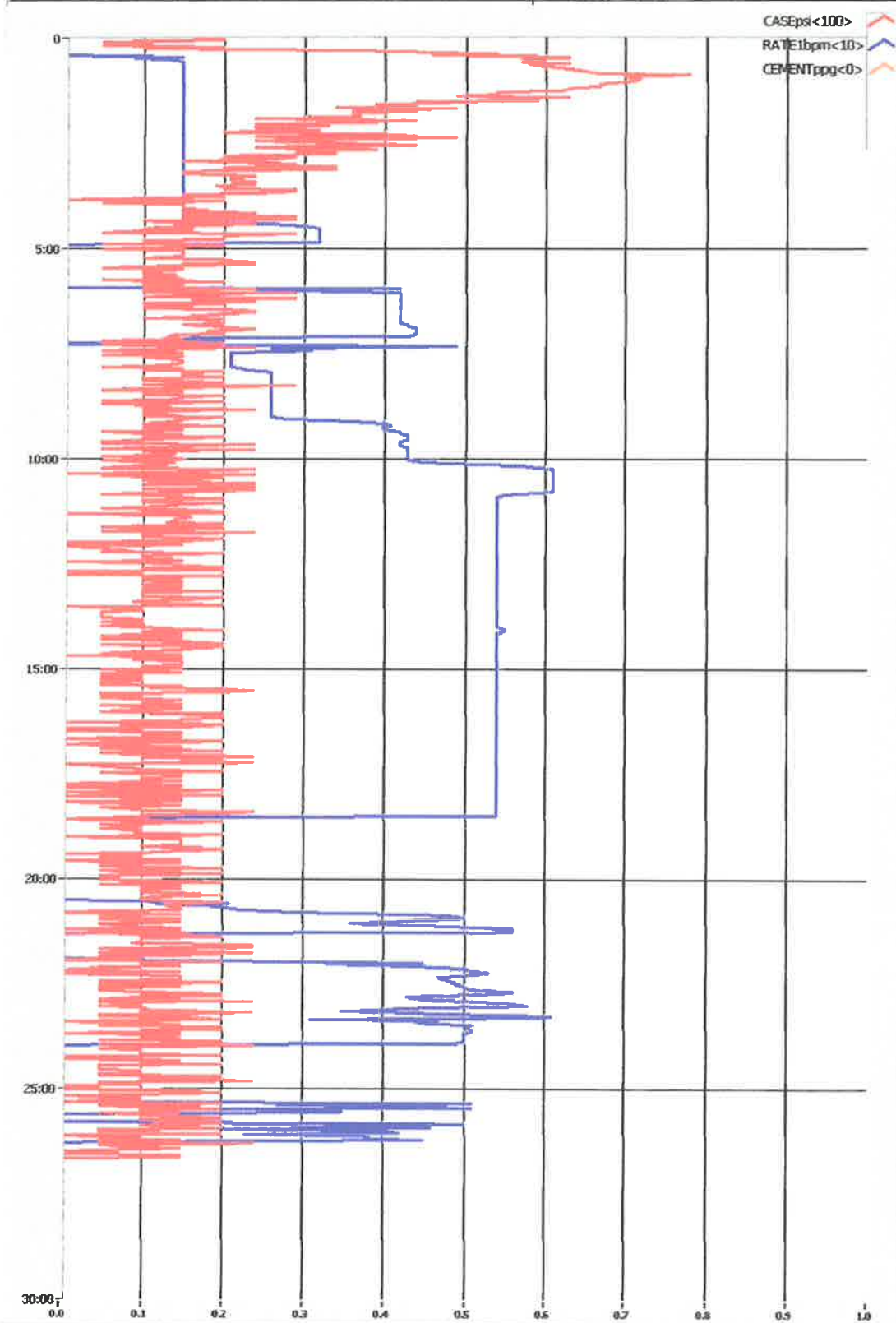
Case Number	COC55659	Type	312021	Case Name	Operator TIPPERARY OIL & GAS CORP		
Insp Type	PD	Open Date	07/11/2006	Close Date	07/13/2006		
Identifier	PD	Date	07/17/2006	Author	ROBERT EAGAN	Subject	INSP
Category	GENERAL					Category	GENERAL
Date	07/17/2006					API / Fac ID	0508107103
						Well / Fac Name	NINE MILE
						Number	2-1

PET witnessed 3 days of plugging ops on this well. Cased Hole Solutions the wire line contractor shot 4 holes in 5&1/2" casing at 2065' and set a cement retainer at 2015' and an injection rate was established through backside of annular space of 5&1/2" and 9&5/8" casing. Stung into retainer on second day and Superior Well Services pumped 70sacks/ 16 4ppg class H cement down tubing but pump pressure went from 2000psi to 4300 psi when cement got to perfs. It was estimated 1/4 bbl cement went through perfs with total of 6 sacks pumped below retainer. They stung out of retainer and reversed out 8 bbls of cement to tank. They went back to retainer and placed a 20 sack plug on top of retainer. On third day they pressured 5&1/2" 1000psi for 15 minutes which held but on pressuring backside annular space they got a pump injection rate of 650psi and 2bbl min so operator pumped a 38 sack cement plug down this space with 93 bbls of displacement and estimated cement top in annular space of 1940' . PET had to leave for drilling inspection so did not witness final surface plug set.

Invoice	:297	Stage	:1 of 1
Date	:Wed 07/12/2006	Start Time	:11:32:53 (11:32 AM)
Customer	:SANTOS USA CORP.	Lease	:NINE MILE 2-1



Invoice	:297	Stage	:2 of 1
Date	:Wed 07/12/2006	Start Time	:13:24:47 (01:24 PM)
Customer	:SANTOS USA CORP.	Lease	:NINE MILE 2-1



Customer :SANTOS USA CORP.

Lease :NINE MILE 2-1

Invoice	:297	Stage	:2 of 1
Date	:Wed 07/12/2006	Start Time	:13:24:47 (01:24 PM)
Customer	:SANTOS USA CORP.	Lease	:NINE MILE 2-1
State	:COLORADO	County	:MOFFAT COUNTY
Engineer	:MIKE STILL	Comments	:
Primary	: 2 7/8;EUE;J 55; 6.50# NEW	Secondary	: 5 1/2; J 55 ; 17.00#
Formation	:VENANGO SAND	Job Type	:CEMENT P.T.A.
Treat Vol	: GAL	Flush Vol	: GAL
Top Int	: FEET	Bottom Int	: FEET
Notch/Perf	: EACH	Comments	:

LOGGED DATA

	Comment	CASEpsi	RATElbpm	s#RATElga	T#RATElga	CEMENTppg
14:42:36	PAUSED	20	0.0	0	0	-5.0

POST JOB COMMENTS

Pumped 10 bbl. Fresh ahead, Mixed and started pumping 14.2 bbl. cement @ 16.4#. Pumped 1.25 bbl. cement out of retainer, well squeezed off to 2000 psi. Mixed and pumped 20 sacks, 3.8 bbl. cement @ 16.4 ontop of retainer

END OF REPORT

Customer :SANTOS USA

Lease :NINE MILE 2-1

Invoice	:297B	Stage	:1 of 3
Date	:Thu 07/13/2006	Start Time	:10:20:19 (10:20 AM)
Customer	:SANTOS USA	Lease	:NINE MILE 2-1
State	:COLORADO	County	:MOFFAT COUNTY
Engineer	:MIKE STILL	Comments	:
Primary	: 5-1/2; J-55 ; 17.00# - NEW	Secondary	: 9-5/8; J-55 ; 36.00# -
Formation	:	Job Type	:PRESSURE TEST
Treat Vol	: BBL	Flush Vol	: BBL
Top Int	: FEET	Bottom Int	: FEET
Notch/Perf	: EACH	Comments	:

LOGGED DATA

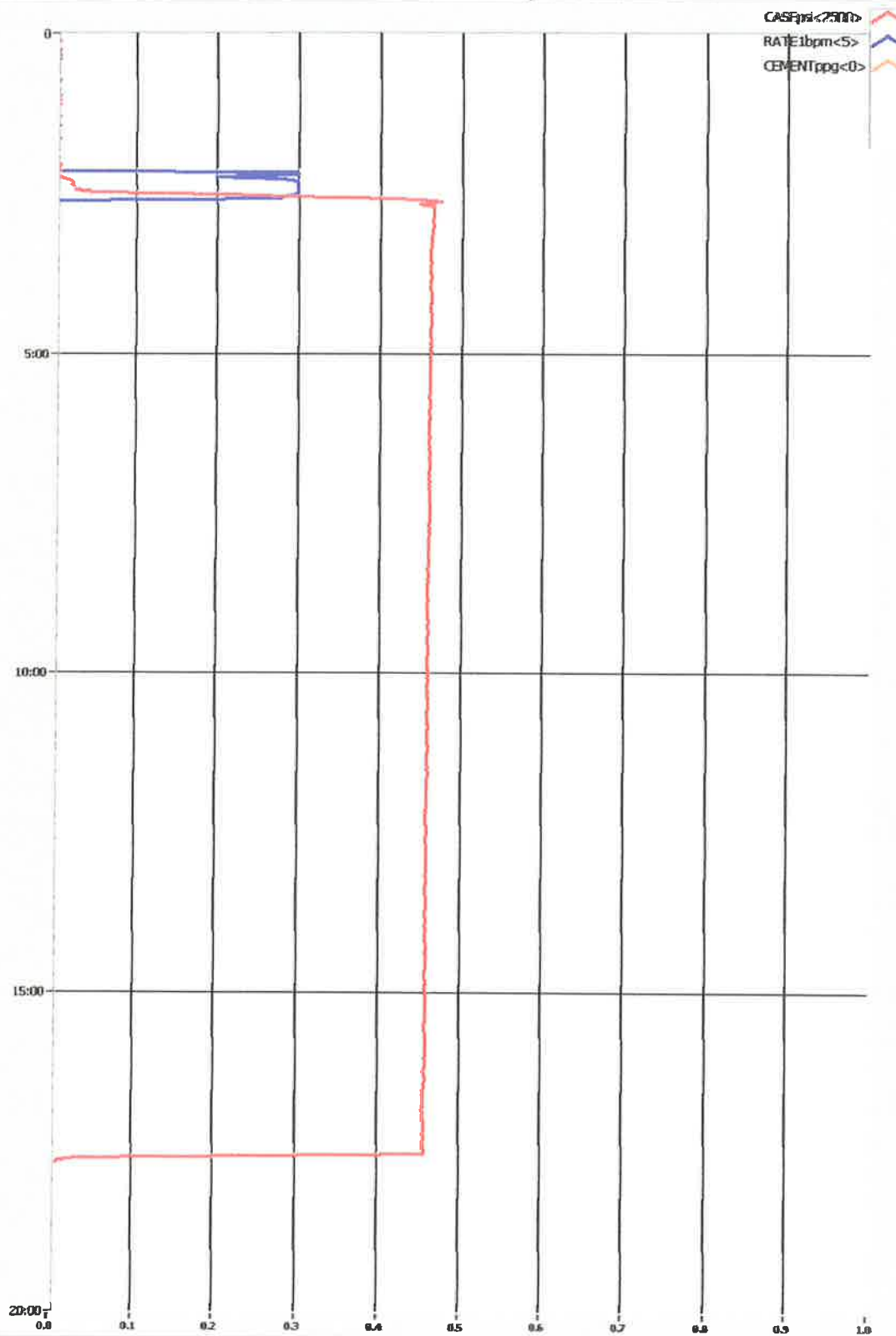
	Comment	CASEpsi	RATElbpm	s#RATElga	T#RATElga	CEMENTppg
12:58:03	PAUSED	0	0.0	0	0	-5.0
12:58:11	TestLine	15	0.0	0	0	-5.0
13:05:39	TestLine	1156	0.0	25	25	-5.0
13:10:07	TestLine	1149	0.0	25	25	-5.0

POST JOB COMMENTS

Pumped .6 bbl. to pressure 5-1/2" casing held 1100 psi for 15 mins.

END OF REPORT

Invoice	:297B	Stage	:1 of 3
Date	:Thu 07/13/2006	Start Time	:10:20:19 (10:20 AM)
Customer	:SANTOS USA	Lease	:NINE MILE 2-1



Customer :SANTOS USA

Lease :NINE MILE 2-1

Invoice	:297B	Stage	:2 of 3
Date	:Thu 07/13/2006	Start Time	:13:19:14 (01:19 PM)
Customer	:SANTOS USA	Lease	:NINE MILE 2-1
State	:COLORADO	County	:MOFFAT COUNTY
Engineer	:MIKE STILL	Comments	:
Primary	: 5-1/2; J-55 ; 17.00# - NEW	Secondary	: 9-5/8; J-55 ; 36.00# -
Formation	:	Job Type	:PRESSURE TEST
Treat Vol	: BBL	Flush Vol	: BBL
Top Int	: FEET	Bottom Int	: FEET
Notch/Perf	: EACH	Comments	:

LOGGED DATA

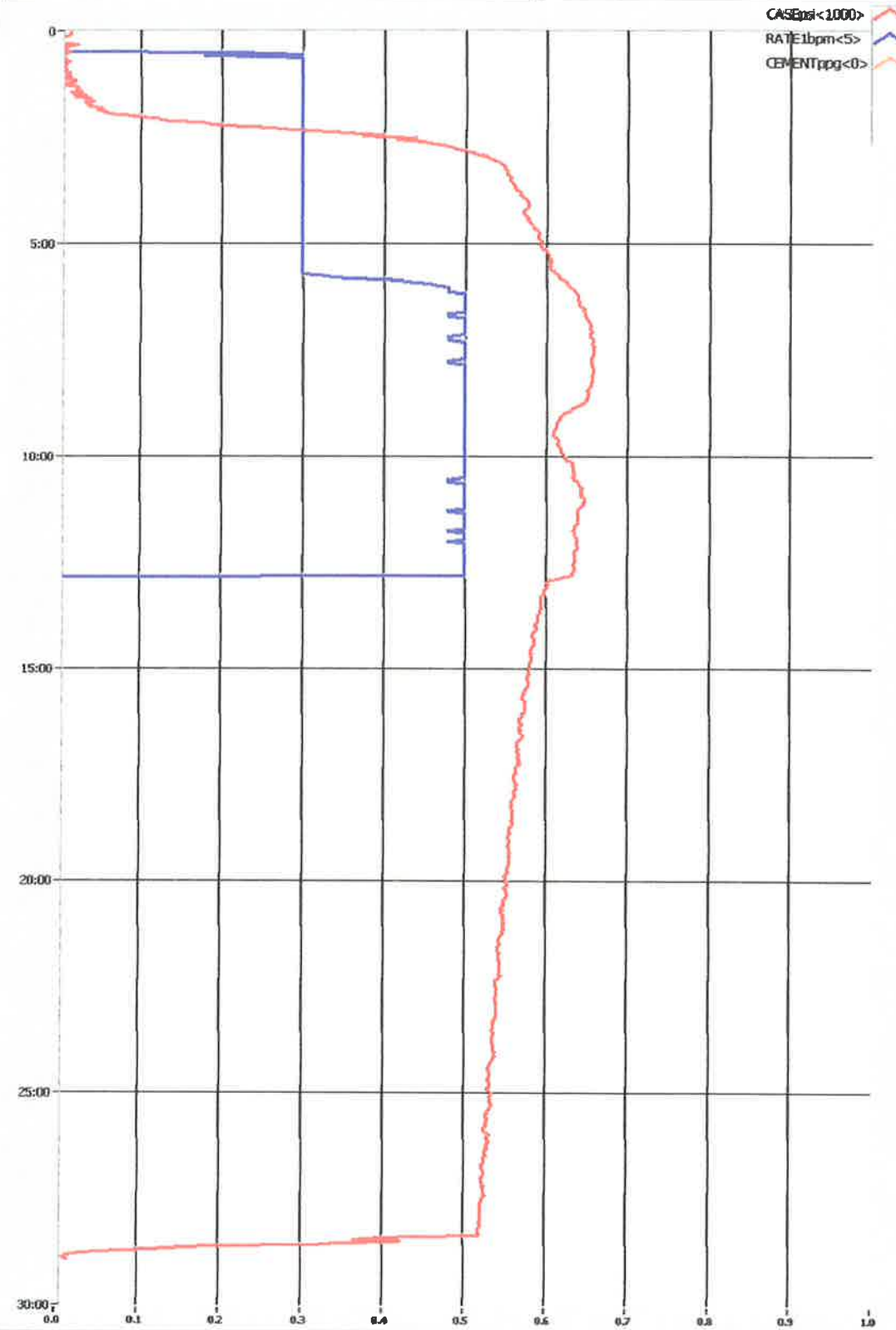
	Comment	CASEpsi	RATElbpm	s#RATElga	T#RATElga	CEMENTppg
13:19:55	PAUSED	15	0.0	0	0	-5.0
13:20:01	TestLine	5	0.0	0	0	-5.0
13:33:51	TestLine	588	0.0	1055	1055	-5.0
13:37:57	TestLine	562	0.0	1054	1054	-5.0
13:43:07	TestLine	540	0.0	1054	1054	-5.0
13:47:33	TestLine	523	0.0	1053	1053	-5.0

POST JOB COMMENTS

Pumped 25 bbl. tried to pressure test, could not get to 1000 psi, held 550 psi for 15 mins.

END OF REPORT

Invoice	:297B	Stage	:2 of 3
Date	:Thu 07/13/2006	Start Time	:13:19:14 (01:19 PM)
Customer	:SANTOS USA	Lease	:NINE MILE 2-1



Customer : SANTOS USA

Lease : NINE MILE 2-1

Invoice	: 297B	Stage	: 3 of 4
Date	: Thu 07/13/2006	Start Time	: 13:50:54 (01:50 PM)
Customer	: SANTOS USA	Lease	: NINE MILE 2-1
State	: COLORADO	County	: MOFFAT COUNTY
Engineer	: MIKE STILL	Comments	:
Primary	: 5-1/2; J-55 ; 17.00# - NEW	Secondary	: 9 5/8; J-55 ; 36.00# -
Formation	:	Job Type	: CEMENT PLUG
Treat Vol	: BBL	Flush Vol	: BBL
Top Int	: FEET	Bottom Int	: FEET
Notch / Perf	: EACH	Comments	:

LOGGED DATA

	Comment	CASEpsi	RATElbp	s#RATElga	T#RATElga	CEMENTppg
15:42 : 40	PAUSED	601	1.5	2	2	6.9

POST JOB COMMENTS

Mixed and Pumped 38 sacks of cement @ 16.4#, pumped 80 bbl. displacement and turned over to rig.

END OF REPORT

Customer :SANTOS USA

Lease :NINE MILE 2-1

Invoice	:298B	Stage	:8 of 2
Date	:Fri 07/14/2006	Start Time	:11:48:02 (11:48 AM)
Customer	:SANTOS USA	Lease	:NINE MILE 2-1
State	:COLORADO	County	:MOFFAT COUNTY
Engineer	:MIKE STILL	Comments	:
Primary	: 5-1/2; J-55 ; 15.50# - NEW	Secondary	: 9-5/8; J-55 ; 36.00# -
Formation	:	Job Type	:PRESSURE TEST
Treat Vol	: GAL	Flush Vol	: GAL
Top Int	: FEET	Bottom Int	: FEET
Notch/Perf	: EACH	Comments	:

LOGGED DATA

	Comment	CASEpsi	RATElbpn	s#RATElga	T#RATElga	CEMENTppg
16:02:58	PAUSED	24	0.0	0	0	0.0
16:03:22	CircWell	15	0.0	0	0	0.0
16:19:42	PAUSED	24	0.0	166	166	7.1

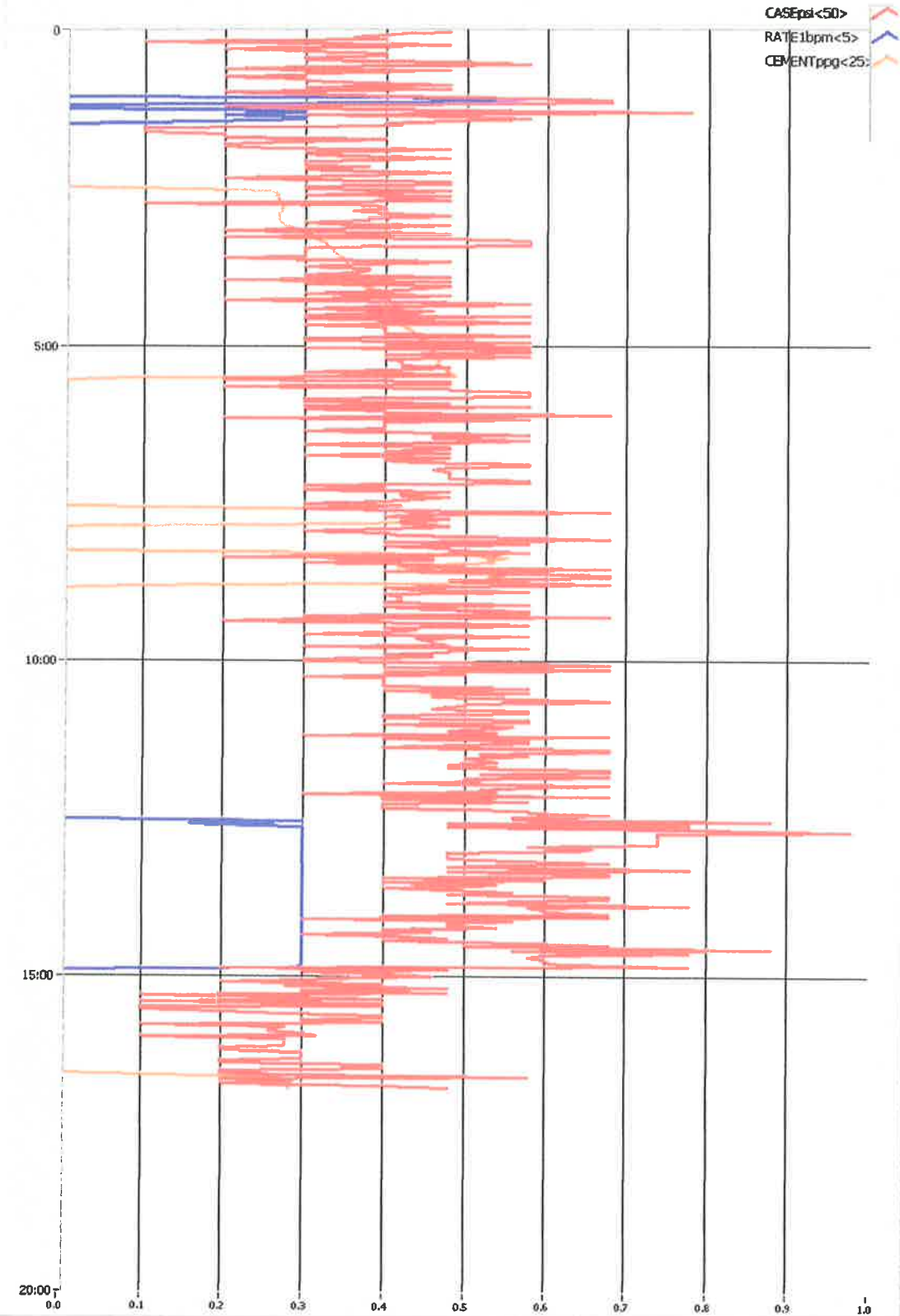
POST JOB COMMENTS

Mixed and pumped 20 sacks, @ 16.4, 3.9 bbls.

END OF REPORT

top
surface plug

Invoice	:298B	Stage	:8 of 2
Date	:Fri 07/14/2006	Start Time	:11:48:02 (11:48 AM)
Customer	:SANTOS USA	Lease	:NINE MILE 2-1



Invoice	:298B	Stage	: 6 of 2
Date	:Fri 07/14/2006	Start Time	:11:00:58 (11:00 AM)
Customer	:SANTOS USA	Lease	:NINE MILE 2-1

