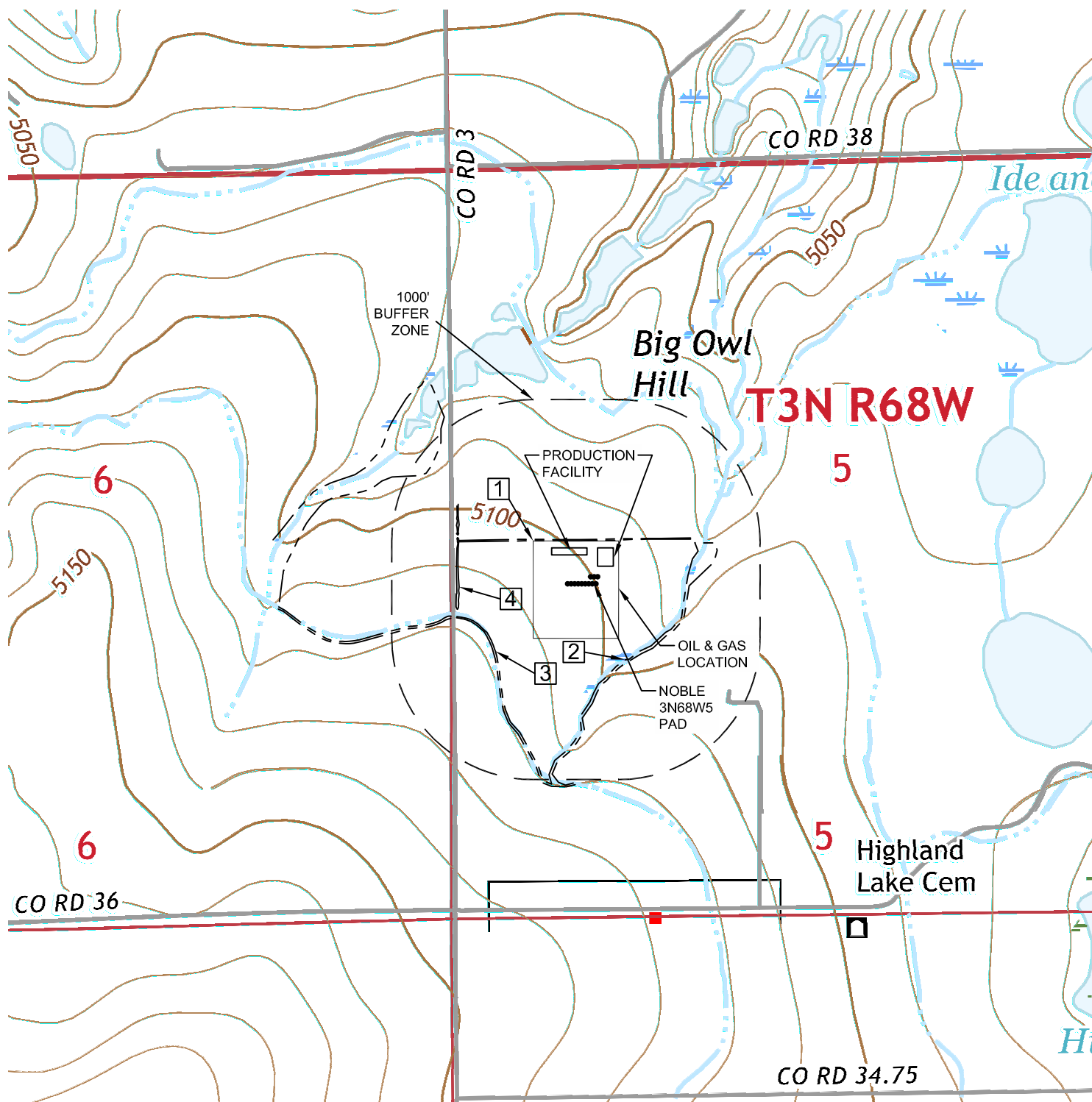


HYDROLOGY MAP

NOBLE 3N68W5 PAD

SECTION: 5
TOWNSHIP: 3N
RANGE: 68W
6TH P.M.
WELD COUNTY, CO



DISTANCES BELOW MEASURED FROM THE PROPOSED EDGE OF DISTURBANCE OF THE OIL AND GAS LOCATION

- 1 IRRIGATION DITCH: 1' N (NEAREST DOWN GRADIENT WATER FEATURE)
- 2 DITCH: 159' SE
- 3 DITCH: 283' SW
- 4 BORROW DITCH: 524' W
- 5 POND: 894' NW