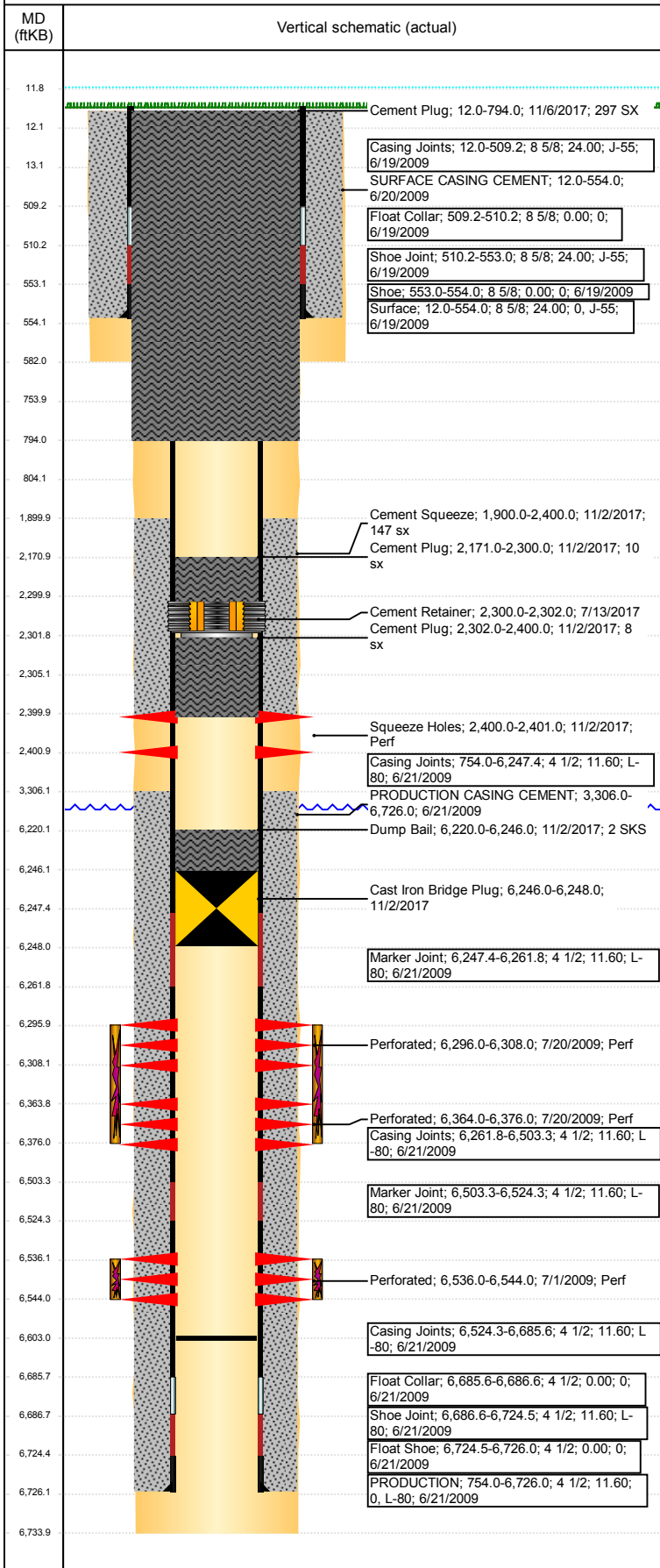


**Well Name: WELLS RANCH BB12-08**

VERTICAL - ORIGINAL HOLE, 11/30/2017 12:05:14 PM



Well Header			
API	Business Unit	District	Well Config
05-123-30127	DJ BASIN	15	VERTICAL
Original KB Elevation (ft)	KB - GL / MSL (ftKB)	Spud Date	P & A Date
4,638	12.00	6/19/2009	
Comment			

Directions To Well  
WCR 67 & 68, E. 2, S 2.75, past cow camp, E/SE 2.5, S 1, SE Into location.

Congressional Location					
Quarter 3	Quarter 4	Section	Township	Twntshp N/S Dir	Range E/W Dir
SE	NE	12	5	N	W

Bottom Hole Location			
North-South Distance (ft)	From N or S Line	East-West Distance (ft)	From E or W Line
2,075.0	FNL	561.0	FEL

Plug Back Total Depths			
Date	Depth (ftKB)	Method	Com
6/21/2009	6,686.0	CASING TALLY	FLOAT COLLAR
6/30/2009	6,657.0	CASED HOLE LOG	CBL DEPTH LOGGER
7/16/2009	6,693.3	TAG	
9/23/2009	6,603.0	TUBING TALLY	DRILL CIFT P W/ CUTRITE BIT AND N2. CHASE P...

Wellbore Sections			
Section Des	Size (in)	Act Top, MD (ftKB)	Act Btm, MD (ftKB)
SURFACE	12 1/4	12	582
PRODUCTION	7 7/8	582	6,734

Zone Statuses					
Zone Name	Status Date	Status	Fluid Type	Job	Prod Method
CODELL	7/22/2009	PR		DRILLING/CO...	
CODELL	11/2/2017	P&A		ABANDON WE...	
NIOBRARA	7/22/2009	PR		DRILLING/CO...	
NIOBRARA	11/2/2017	P&A		ABANDON WE...	

Casing Strings						
Surface, 554.0ftKB						
Casing Description	Run Date	OD (in)	Wt/Len (L...)	Grade	Top, MD (ft...)	MD (ftKB)
Surface	6/19/2009	8 5/8	24.00	J-55	12.0	554.0

PRODUCTION, 6,726.0ftKB						
Casing Description	Run Date	OD (in)	Wt/Len (L...)	Grade	Top, MD (ft...)	MD (ftKB)
PRODUCTION	6/21/2009	4 1/2	11.60	L-80	12.0	6,726.0

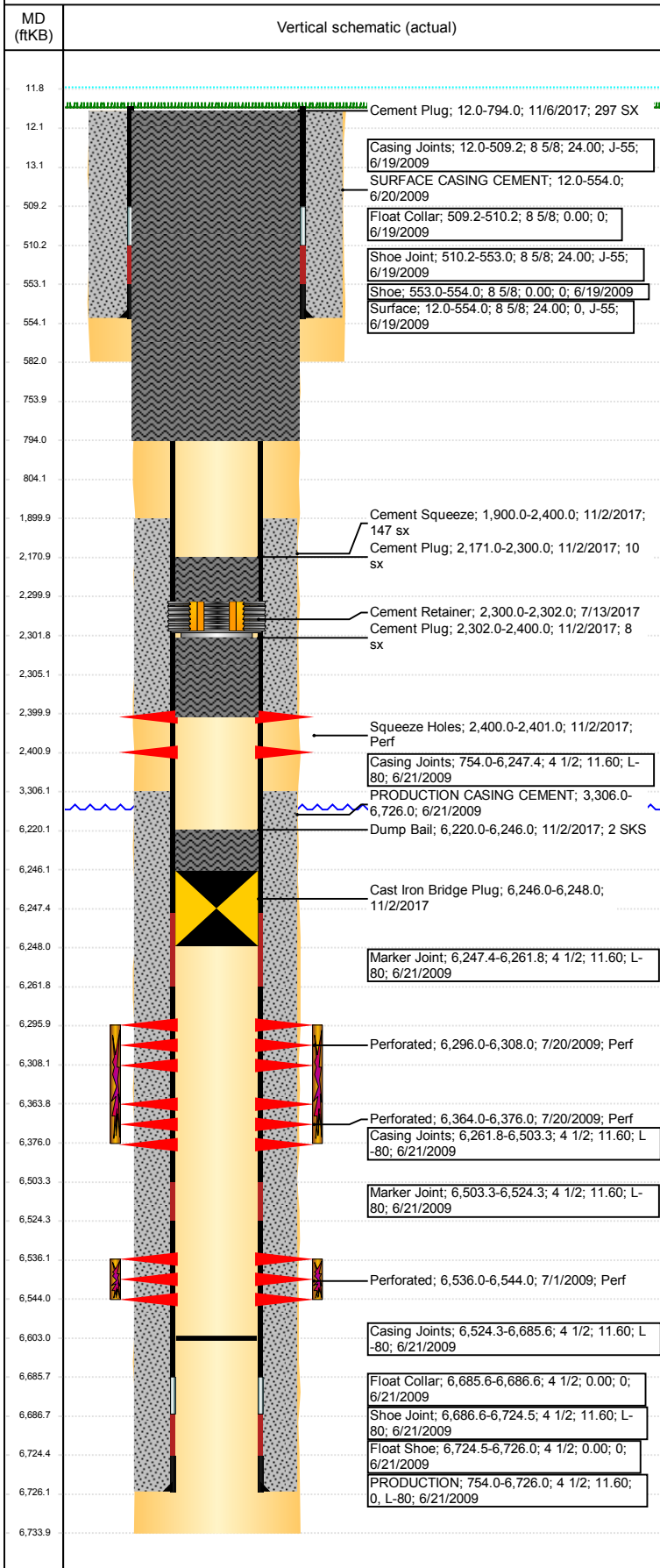
Cement		
Description	Top Depth (ftKB)	Bottom Depth (ftKB)
SURFACE CASING CEMENT	12.0	554.0
PRODUCTION CASING CEMENT	3,306.0	6,726.0
Dump Bail	6,220.0	6,246.0
Balance Plug	754.0	804.0
Shoe Plug	12.0	754.0
Cement Plug	2,305.0	2,400.0
Cement Plug	2,171.0	2,300.0
Cement Squeeze	1,900.0	2,400.0
Dump Bail	6,220.0	6,246.0
Cement Squeeze	1,900.0	2,400.0
Cement Plug	2,302.0	2,400.0
Cement Plug	2,171.0	2,300.0
Cement Plug	12.0	794.0

Tubing Strings							
Tubing Description	Run Date	String...	ID (in)	Wt (lb/ft)	Grade	Len (ft)	Set De...
Tubing - Production	9/23/2009	2 3/8	2.00	4.70	J-55	6,510.06	

Tubing Components							
Item Des	OD (in)	Wt (lb/ft)	Grade	Jts	Len (ft)	Btm (ftKB)	Btm (TVD) (ftKB)
Tubing Pup Joint	2 3/8	4.70	J-55	1	10.00	22.0	

**Well Name: WELLS RANCH BB12-08**

VERTICAL - ORIGINAL HOLE, 11/30/2017 12:05:15 PM



Tubing Components							
Item Des	OD (in)	Wt (lb/ft)	Grade	Jts	Len (ft)	Btm (ftKB)	Btm (TVD) (ftKB)
Tubing	2 3/8	4.70	J-55	212	6,498.21	6,520.2	
Pump Seating Nipple	2 3/8			1	1.10	6,521.3	
Cutrite Blade Bit	3 7/8			1	0.75	6,522.1	

Other In Hole				
Run Date	Des	OD (in)	Top (ftKB)	Btm (ftKB)
7/13/2017	Cement Retainer	3.99	2,300.0	2,302.0
11/2/2017	Cast Iron Bridge Plug	3.99	6,246.0	6,248.0

Logs			
Date	Type	Top, MD (ftKB)	Btm, MD (ftKB)
6/21/2009	Caliper/Comp. Density/Neutron/GR/SP/ML	2,550.0	6,730.0
6/21/2009	DIL/GR/SP/Caliper	554.0	6,730.0
6/30/2009	CBL/CCL/GR	2,930.0	6,650.0
7/2/2015	GYRO	13.0	6,450.0

Perforation Data					
Linked Zone	Bnch/St g	Sum of Entered Shot Total	Top (ftKB)	Btm (ftKB)	Date
NIOBRARA, ORIGINAL HOLE	A	6	2,400.00	2,401.00	11/2/2017
NIOBRARA, ORIGINAL HOLE	B	24	6,296.00	6,308.00	7/20/2009
NIOBRARA, ORIGINAL HOLE	B	24	6,364.00	6,376.00	7/20/2009
CODELL, ORIGINAL HOLE	01	32	6,536.00	6,544.00	7/1/2009
<b>Total (Sum)</b>		<b>86</b>			

Stimulation Intervals	
Start Date	Primary Job Type
7/20/2009	DRILLING/COMPLETION - ORIGINAL

Technical Result	Tech Result Details	Tech Result Note
Success	According to Plan	

Comment (CODELL): REVERSE STEP RATE RESULTS: PO - 12. NWB FRIC - 164 PSI. PERF FRIC - 238 PSI. ISIP - 2849 PSI. INC RATE T/ 22 BPM DUE TO HIGH LO. TREATMENT WENT WELL. NOLTE FLAT. POST ISIP - 3119 PSI. AVG VISC - 27.7 CP. AVG TEMP - 75.8F. AVG PH - 10.08.

Start Date	Primary Job Type
7/20/2009	DRILLING/COMPLETION - ORIGINAL

Technical Result	Tech Result Details	Tech Result Note
Success	According to Plan	

Comment (NIOBRARA): ISIP - 3076 PSI. TREATMENT WENT WELL. AVG NOLTE - 0.1. POST ISIP - 3068 PSI. AVG VISC - 24.3 CP. AVG TEMP - 75.5F. AVG PH - 10.13.