

# HALLIBURTON

iCem<sup>®</sup> Service

## **TERRA ENERGY PARTNERS**

**For: Terra**

Date: Thursday, September 28, 2017

**SR 541-12 Surface**

API#05-045-23432

Sincerely,  
Grand Junction Cement Engineering

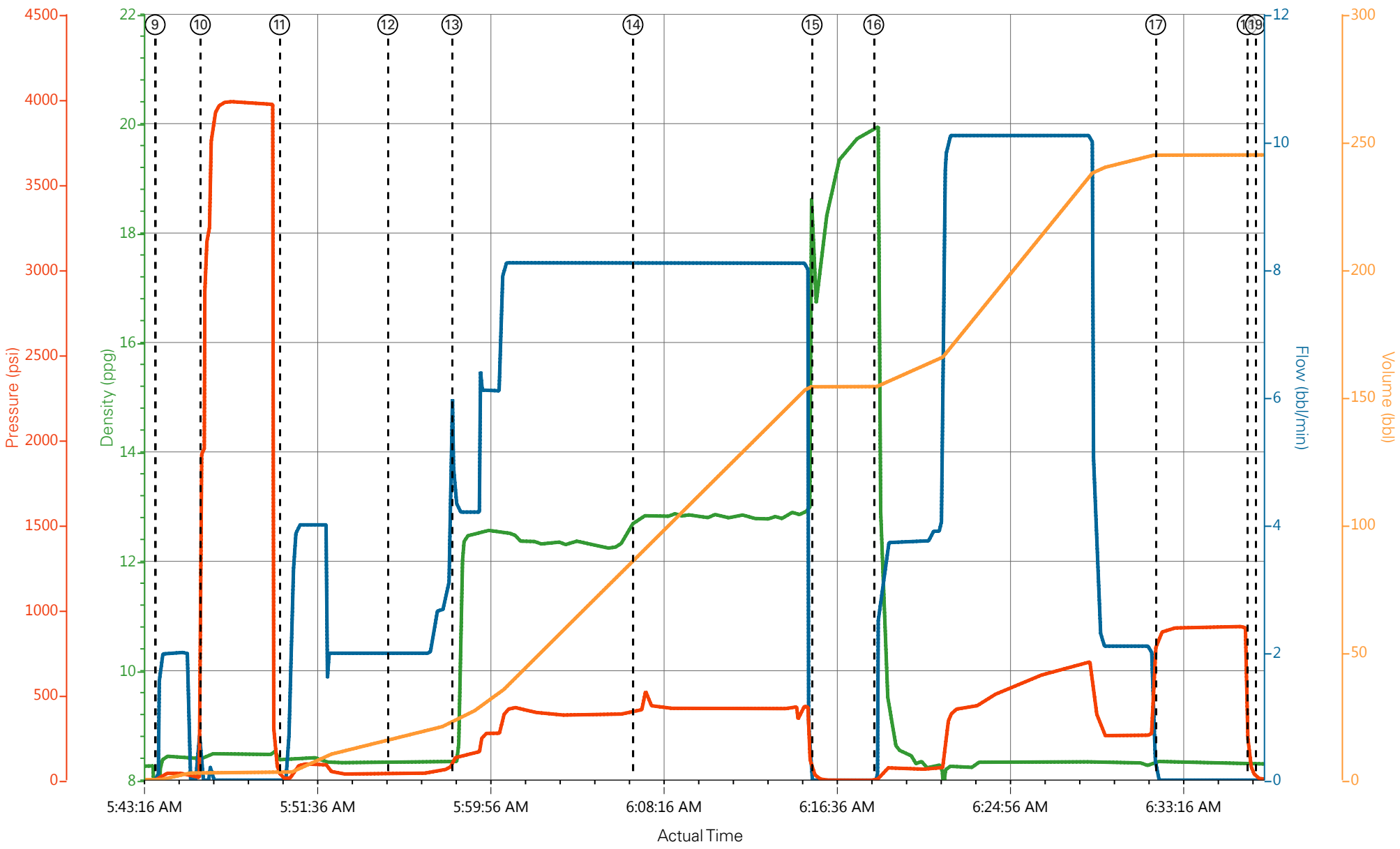
## 2.0 Real-Time Job Summary

## 2.1 Job Event Log

Type	Seq. No.	Graph Label	Date	Time	Source	Downhole Density (ppg)	Combined Pump Rate (bbl/min)	Driv-Side Pump Pressure (psi)	Combined Pump Total (bbl)	Comments
Event	1	Call Out	9/27/2017	18:00:00	USER					REQUESTED ON LOC @ 0100
Event	2	Pre-Convoy Safety Meeting	9/27/2017	20:00:00	USER					ALL CREW MEMBERS ATTENDED SAFETY MEETING, JOURNEY CREATED
Event	3	Crew Leave Yard	9/27/2017	20:15:00	USER					1 ELITE, 1 660, 1 PICKUP
Event	4	Arrive at Location from Service Center	9/28/2017	01:00:00	USER					ALL CREW MEMBERS ARRIVE ON LOCATION SAFELY, AND ON TIME @ 0100. JOURNEY CLOSED
Event	5	LOCATION ASSESMENT	9/28/2017	01:10:00	USER					JSA COMPLETED, WATER TEST PH 7.0, CHLORIDES <200, TEMP 65 DEGREES
Event	6	Pre-Rig Up Safety Meeting	9/28/2017	01:20:00	USER					DISCUSS ALL RIG UP HAZARDS WITH ALL HES MEMBERS ON LOCATION
Event	7	Rig-Up Equipment	9/28/2017	01:30:00	USER					RIG UP IRON TO STAND PIPE, RIG UP BULK HOSE TO 660, RIGUP H2O LINES TO UPRIGHT WATER TANK
Event	8	Pre-Job Safety Meeting	9/28/2017	02:00:00	USER					MEET WITH CUSTOMER REP AND ALL RIG PERSONELL TO DISCUSS SAFETY AND JOB PROCEDURE.
Event	9	START JOB	9/28/2017	05:43:57	USER					9 5/8" 32.3# CSG, 13.5" OH, TP 1153.95, SJ 44.48, MUD # 9.5
Event	10	Test Lines	9/28/2017	05:46:07	COM5			4500		
Event	11	Pump Spacer 1	9/28/2017	05:49:56	COM5	8.33	4	150	20	20 BBL OF FRESH WATER
Event	12	Check weight	9/28/2017	05:55:08	COM5					DENSITY VERIFIED BY MUD SCALES
Event	13	Pump Lead Cement	9/28/2017	05:58:13	COM5	12.3	8	430	53	125 SKS 12.3 PPG 2.38 YEILD 13.77 GAL/SK
Event	14	Pump Tail Cement	9/28/2017	06:06:56	COM5	12.8	8	480	65.8	175 SKS 12.8 PPG 2.11 YEILD 11.78 GAL/SK
Event	15	Shutdown	9/28/2017	06:15:33	USER					DROP AND WASH UP ON TOP OF PLUG
Event	16	Pump Displacement	9/28/2017	06:18:31	COM5	8.33	10	700	77	FRESH WATER

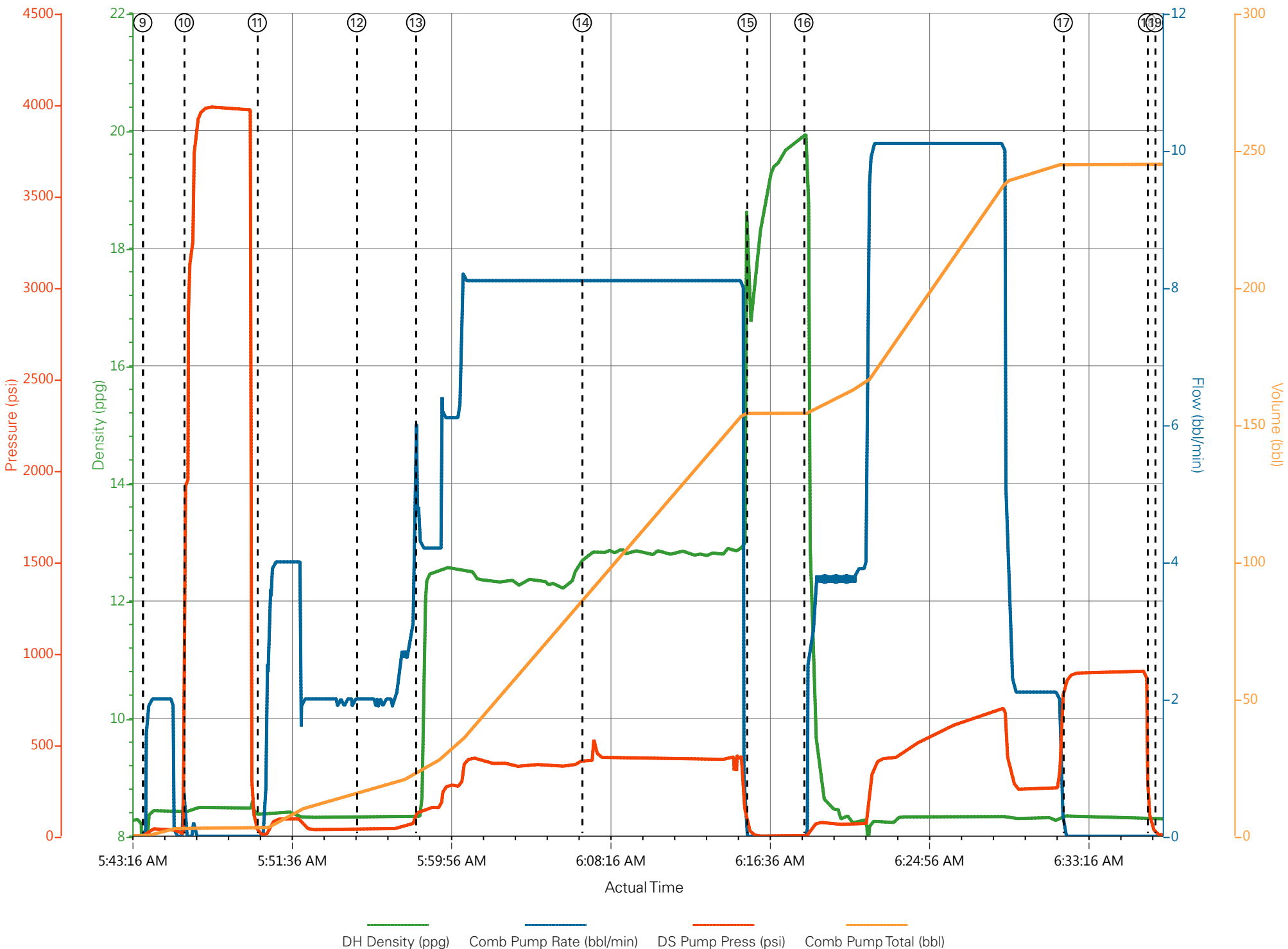
Event	17	Bump Plug	9/28/2017	06:32:05	COM5	8.33	2	900	87.3	PLUG BUMPED @ 280 PSI BROUGHT UP TO 900 PSI AND HELD FOR 3 MIN
Event	18	Check Floats	9/28/2017	06:36:29	COM5					FLOATS HELD 1/2 BBL BACK TO TRUCK
Event	19	End Job	9/28/2017	06:36:53	USER					GOOD RETURNS THROUGH OUT JOB 25 BBL BACK TO SURFACE
Event	20	Pre-Rig Down Safety Meeting	9/28/2017	06:37:45	USER					100 # OF SUGAR USED, NO ADD HOURS
Event	21	Rig-Down Equipment	9/28/2017	06:38:39	USER					
Event	22	Pre-Convoy Safety Meeting	9/28/2017	07:14:48	USER					
Event	23	Crew Leave Location	9/28/2017	08:00:00	USER					THANK YOU FOR USING HALLIBURTON - CHRIS MARTINEZ AND CREW

TEP SR 541-12 SURFACE



- |  |                             |                    |                                |                              |
|--|-----------------------------|--------------------|--------------------------------|------------------------------|
| ① Call Out                               | ⑥ Pre-Rig Up Safety Meeting | ⑪ Pump Spacer 1    | ⑯ Pump Displacement            | 21 Rig-Down Equipment        |
| ② Pre-Convoy Safety Meeting              | ⑦ Rig-Up Equipment          | ⑫ Check weight     | ⑰ Bump Plug                    | 22 Pre-Convoy Safety Meeting |
| ③ Crew Leave Yard                        | ⑧ Pre-Job Safety Meeting    | ⑬ Pump Lead Cement | ⑱ Check Floats                 | 23 Crew Leave Location       |
| ④ Arrive at Location from Service Center | ⑨ START JOB                 | ⑭ Pump Tail Cement | ⑲ End Job                      |                              |
| ⑤ LOCATION ASSESSMENT                    | ⑩ Test Lines                | ⑮ Shutdown         | 20 Pre-Rig Down Safety Meeting |                              |

TEP SR 541-12 SURFACE



DH Density (ppg) Comb Pump Rate (bbl/min) DS Pump Press (psi) Comb Pump Total (bbl)