

LEGEND:

- 90° SYMBOL  
PROPOSED WELLHEAD.  
LANDING POINT.  
TARGET BOTTOM HOLE.  
SECTION CORNERS LOCATED. (NAD 83)  
SECTION CORNERS RE-ESTABLISHED. (Not Set on Ground.) (NAD 83)

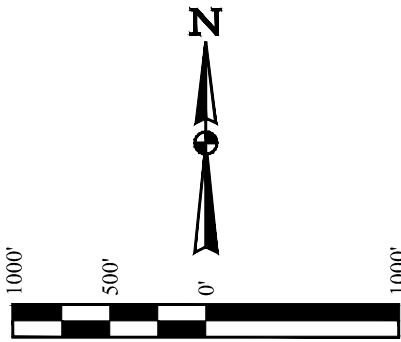
T7N, R81W, 6th P.M.

SandRidge Exploration & Production, LLC

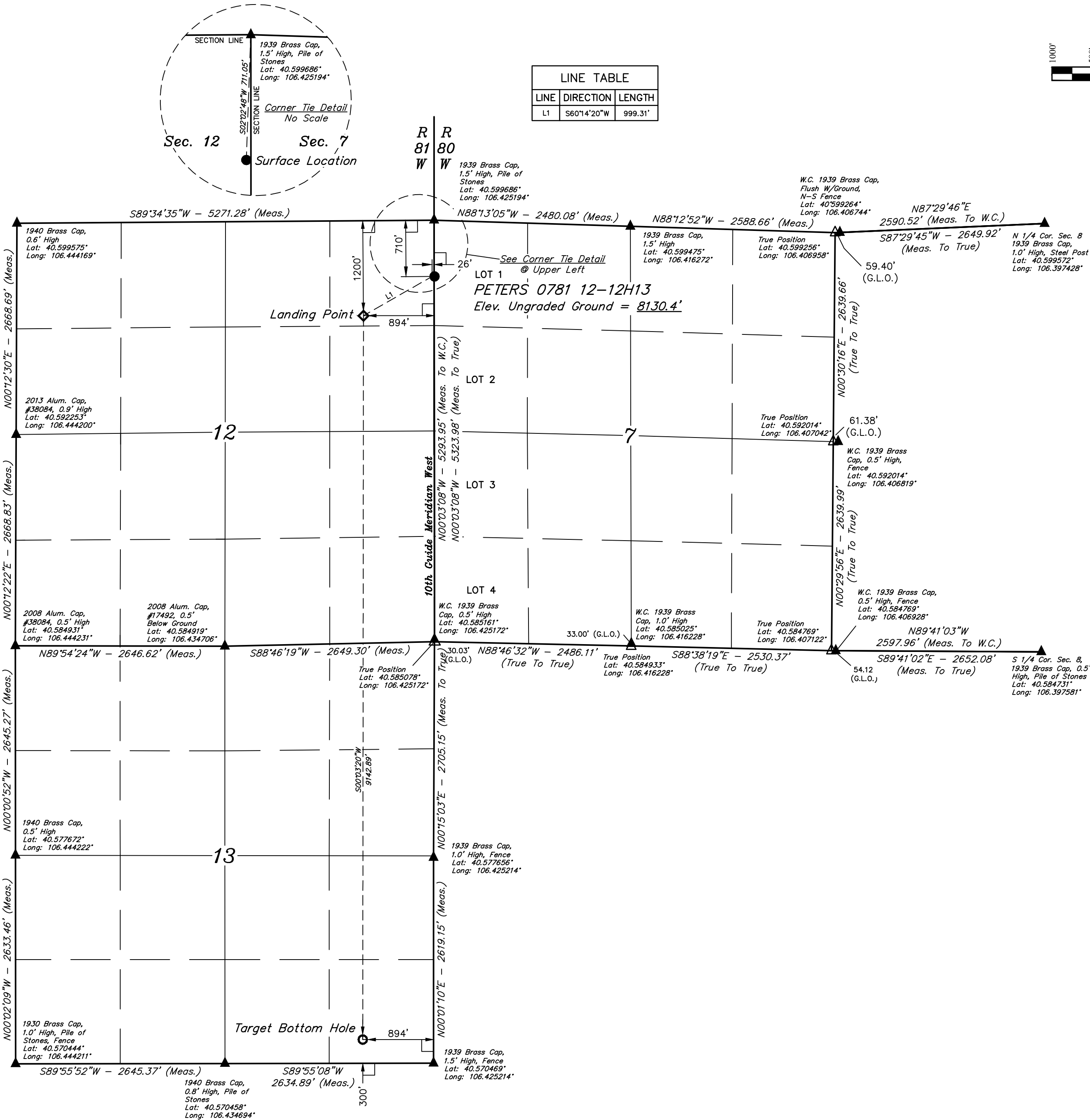
PETERS 0781 12-12H13  
NE 1/4 NE 1/4, SECTION 12, T7N, R81W, 6th P.M.  
JACKSON COUNTY, COLORADO

BASIS OF BEARINGS  
BASIS OF ELEVATION

SPOT ELEVATION AT THE SOUTHEAST CORNER OF SECTION 29, T7N, R80W, 6th P.M., TAKEN FROM THE COALMONT QUADRANGLE, COLORADO, JACKSON COUNTY 7.5 MINUTE QUAD. (TOPOGRAPHIC MAP) PUBLISHED BY THE UNITED STATES DEPARTMENT OF THE INTERIOR, GEOLOGICAL SURVEY. SAID ELEVATION IS MARKED AS BEING 8156 FEET.



LINE TABLE		
LINE	DIRECTION	LENGTH
L1	S60°14'20"W	999.31'



CERTIFICATE  
THIS IS TO CERTIFY THAT THE ABOVE SURVEY WAS MADE IN ACCORDANCE WITH THE NOTES OF ACTUAL SURVEYS MADE IN ACCORDANCE WITH MY SURVEYING PRACTICE AND THAT THE SAME ARE TRUE AND CORRECT TO THE BEST OF MY KNOWLEDGE AND BELIEF.

REGISTERED LAND SURVEYOR  
REG. NO. 28285  
STATE OF COLORADO  
JULY 17, 2017

PDOP = 1.4

NAD 83 (SURFACE LOCATION)	NAD 83 (LANDING POINT)	NAD 83 (TARGET BOTTOM HOLE)
LATITUDE = 40°35'51.85" (40.597736)	LATITUDE = 40°35'54.95" (40.596375)	LATITUDE = 40°34'16.64" (40.571289)
LONGITUDE = 106°25'31.03" (106.425286)	LONGITUDE = 106°25'42.27" (106.428408)	LONGITUDE = 106°25'42.35" (106.428431)
NAD 27 (SURFACE LOCATION)	NAD 27 (LANDING POINT)	NAD 27 (TARGET BOTTOM HOLE)
LATITUDE = 40°35'51.93" (40.597758)	LATITUDE = 40°35'47.03" (40.596397)	LATITUDE = 40°34'16.71" (40.571308)
LONGITUDE = 106°25'28.92" (106.424700)	LONGITUDE = 106°25'40.15" (106.427819)	LONGITUDE = 106°25'40.23" (106.427842)
STATE PLANE NAD 83 (CO. NORTH)	STATE PLANE NAD 83 (CO. NORTH)	STATE PLANE NAD 83 (CO. NORTH)
N: 1461937.46 E: 2743054.63	N: 1461450.47 E: 2742182.49	N: 1452311.94 E: 2742080.67
STATE PLANE NAD 27 (CO. NORTH)	STATE PLANE NAD 27 (CO. NORTH)	STATE PLANE NAD 27 (CO. NORTH)
N: 461935.33 E: 1743210.88	N: 461448.33 E: 1742338.75	N: 452309.76 E: 1742237.01

REV: 4 10-12-17 T.L.L. (BHL CHANGE)



UELS, LLC  
Corporate Office \* 85 South 200 East  
Vernal, UT 84078 \* (435) 789-1017

SURVEYED BY	CHAD MEIERS, D.S.	09-01-16	SCALE
DRAWN BY	T.B.	09-08-16	1" = 1000'

WELL LOCATION PLAT