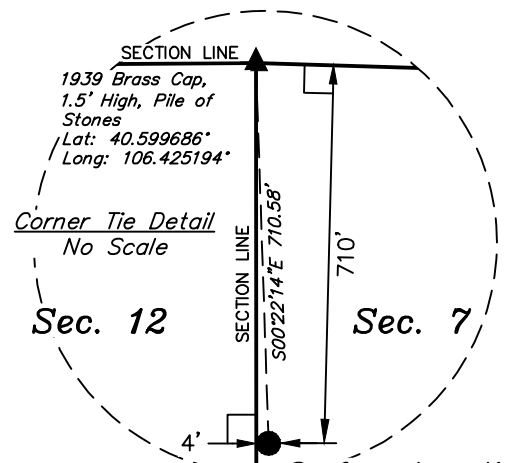
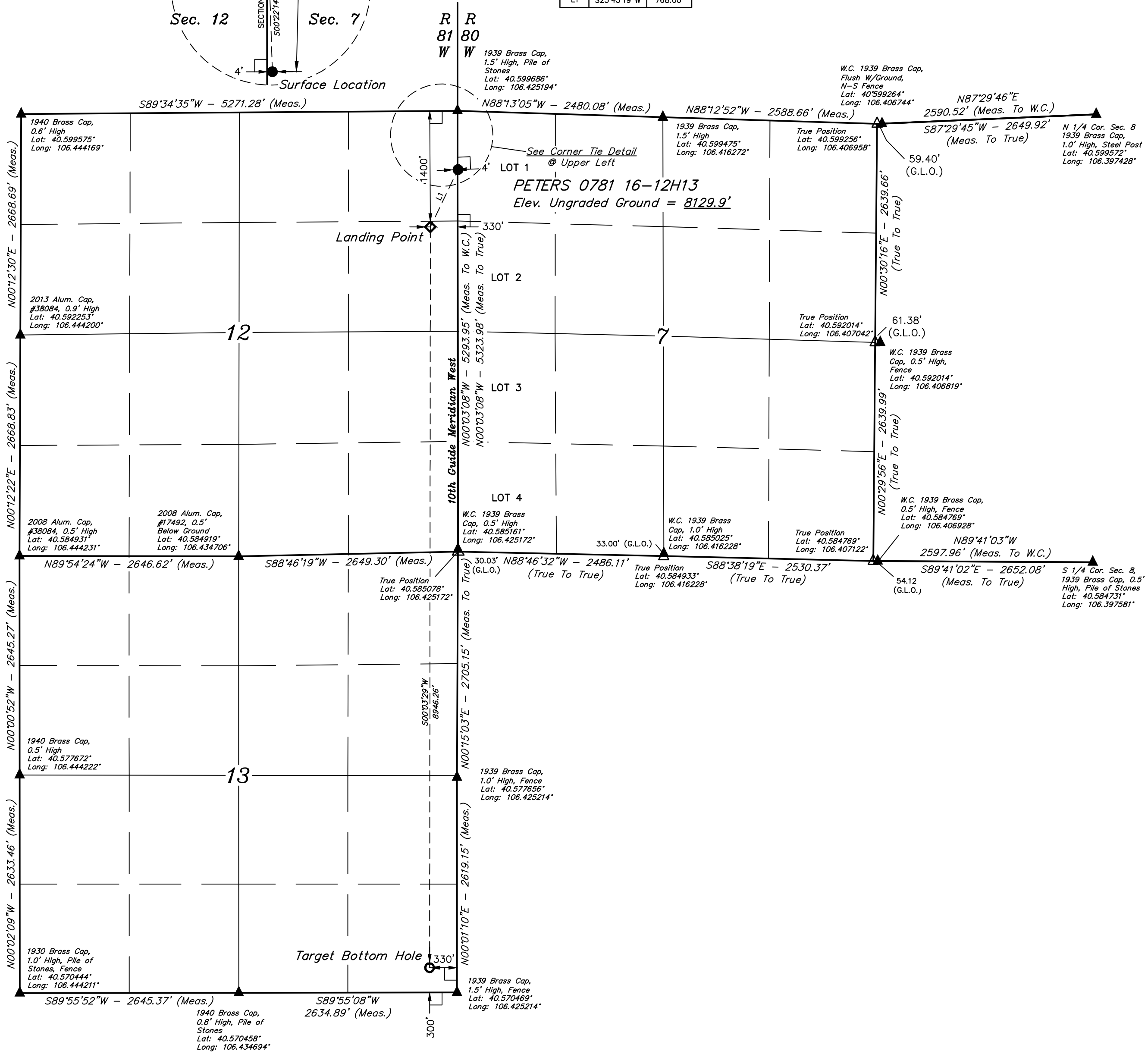
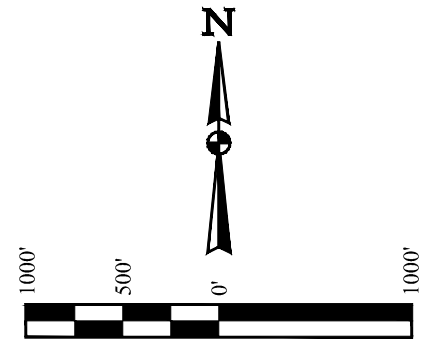


- LEGEND:**
- ◻ = 90° SYMBOL
 - = PROPOSED WELLHEAD.
 - ◆ = LANDING POINT.
 - = TARGET BOTTOM HOLE.
 - ▲ = SECTION CORNERS LOCATED. (NAD 83)
 - △ = SECTION CORNERS RE-ESTABLISHED. (Not Set on Ground.) (NAD 83)



LINE TABLE		
LINE	DIRECTION	LENGTH
L1	S25°43'19"W	768.00'



CERTIFICATE OF REGISTRATION
THIS IS TO CERTIFY THAT THE ABOVE DESCRIBED SURVEY AND NOTES OF ACTUAL SURVEYS MADE HEREUNDER BY ME OR UNDER MY SUPERVISION AND THAT THE SAME ARE TRUE AND CORRECT TO THE BEST OF MY KNOWLEDGE AND BELIEF.

[Signature]
REGISTERED LAND SURVEYOR
REGISTRATION NO. 28285
STATE OF COLORADO

PDOP = 1.8

NAD 83 (SURFACE LOCATION)	NAD 83 (LANDING POINT)	NAD 83 (TARGET BOTTOM HOLE)
LATITUDE = 40°35'51.85" (40.597736)	LATITUDE = 40°35'45.02" (40.595839)	LATITUDE = 40°34'16.65" (40.571292)
LONGITUDE = 106°25'30.64" (106.425178)	LONGITUDE = 106°25'34.96" (106.426378)	LONGITUDE = 106°25'35.04" (106.426400)
NAD 27 (SURFACE LOCATION)	NAD 27 (LANDING POINT)	NAD 27 (TARGET BOTTOM HOLE)
LATITUDE = 40°35'51.93" (40.597758)	LATITUDE = 40°35'45.09" (40.595858)	LATITUDE = 40°34'16.72" (40.571311)
LONGITUDE = 106°25'28.53" (106.424592)	LONGITUDE = 106°25'32.84" (106.425789)	LONGITUDE = 106°25'32.93" (106.425814)
STATE PLANE NAD 83 (CO. NORTH)	STATE PLANE NAD 83 (CO. NORTH)	STATE PLANE NAD 83 (CO. NORTH)
N: 1461937.18 E: 2743084.61	N: 1461248.99 E: 2742744.41	N: 1452307.01 E: 2742644.41
STATE PLANE NAD 27 (CO. NORTH)	STATE PLANE NAD 27 (CO. NORTH)	STATE PLANE NAD 27 (CO. NORTH)
N: 461935.05 E: 1743240.86	N: 461246.85 E: 1742900.68	N: 452304.83 E: 1742800.75

REV: 4 10-12-17 T.L.L. (BHL CHANGE)

UINTAH
ENGINEERING & LAND SURVEYING

UELS, LLC
Corporate Office * 85 South 200 East
Vernal, UT 84078 * (435) 789-1017

SURVEYED BY	CHAD MEIERS, D.S.	09-01-16	SCALE
DRAWN BY	T.B.	09-08-16	1" = 1000'

WELL LOCATION PLAT