



ATLAS
WIRELINE
SERVICES

ACOUSTIC CEMENT BOND LOG
VDL
GAMMA RAY

FILE NO.

COMPANY SNYDER OIL CORPORATION

WELL PROSPECT CO. 26-1414

API NO.

FIELD WITTENBERG

COUNTY WELD STATE COLORADO

LOCATION:
SE/5W

OTHER SERVICES
2 1/2" PERF

SEC 26 TWP 4 N RGE 64 M

PERMANENT DATUM GROUND LEVEL

ELEV. 4702

ELEVATIONS

LOGGING MEASURED FROM K.B. 11 FT. ABOVE P.D.

DRILLING MEASURED FROM KELLY BUSHING

KB 4713
OF --
CL 4702

DATE 10-NOV-1994

RUN 1

SERVICE ORDER 145816

DEPTH-DRILLER 6975

DEPTH-LOGGER 6913

BOTTOM LOGGED INTERVAL 6908

TOP LOGGED INTERVAL 5840

TYPE FLUID IN HOLE WATER

SALINITY PPM CL. --

DENSITY LB/CL. --

LEVEL FULL

MAX. REC. TEMP. DEG. F 237

OPR. RIG TIME 1.5 HRS.

EQUIP. NO. / LOC. LP-3083 FT. MORGAN

RECORDED BY JIM MCKIE

WITNESSED BY ATLAS WIRELINE

BOREHOLE RECORD

NO.	BIT	FROM	TO
1	NR	SURF	514
2	6 1/4	514	6975

IN MAKING INTERPRETATIONS OF LOGS OUR EMPLOYEES WILL GIVE CUSTOMER THE BENEFIT OF THEIR BEST JUDGEMENT, BUT SINCE ALL INTERPRETATIONS ARE OPINIONS BASED ON INFERENCES FROM ELECTRICAL OR OTHER MEASUREMENTS, WE CANNOT, AND WE DO NOT GUARANTEE THE ACCURACY OR CORRECTNESS OF ANY INTERPRETATION. WE SHALL NOT BE LIABLE OR RESPONSIBLE FOR ANY LOSS, COST, DAMAGES, OR EXPENSES WHATSOEVER INCURRED OR SUSTAINED BY THE CUSTOMER RESULTING FROM ANY INTERPRETATION MADE BY ANY OF OUR EMPLOYEES.

SIZE	WGT	FROM	TO
7	NR	SURF	514
3 1/2	7.7	SURF	6975

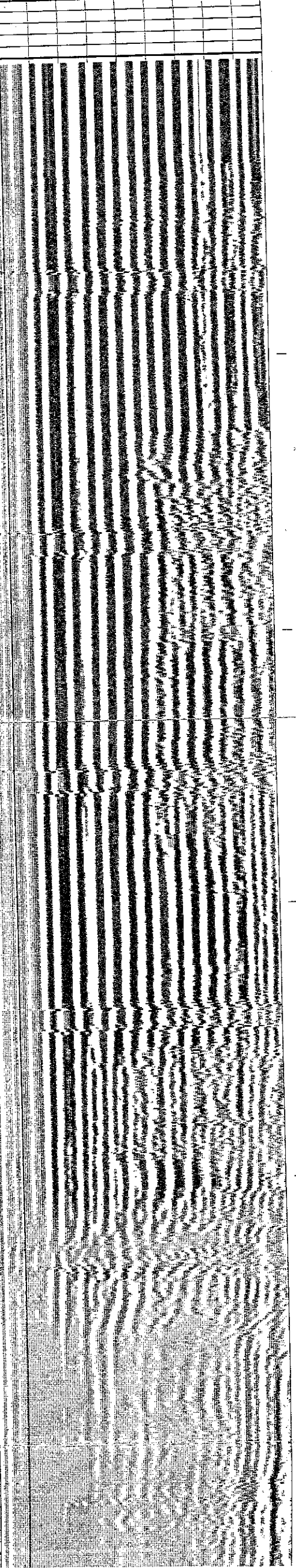
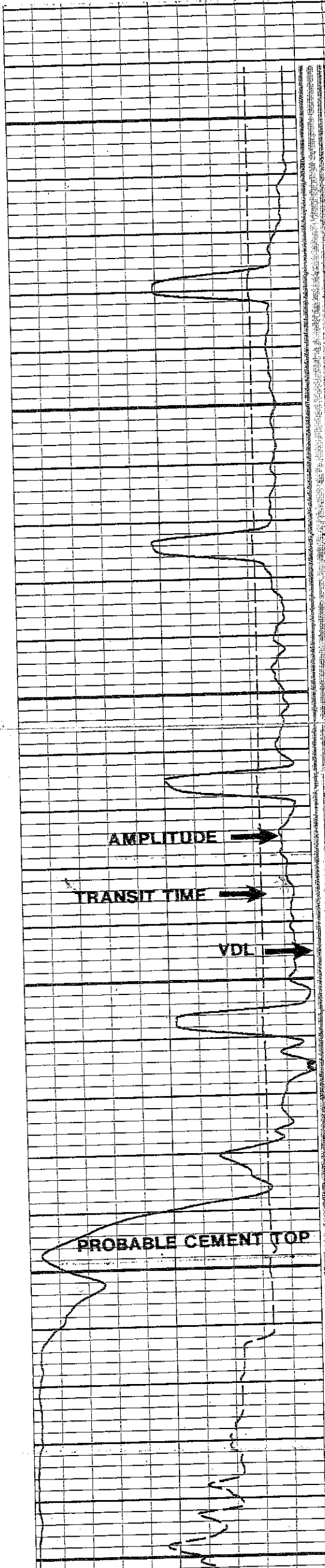
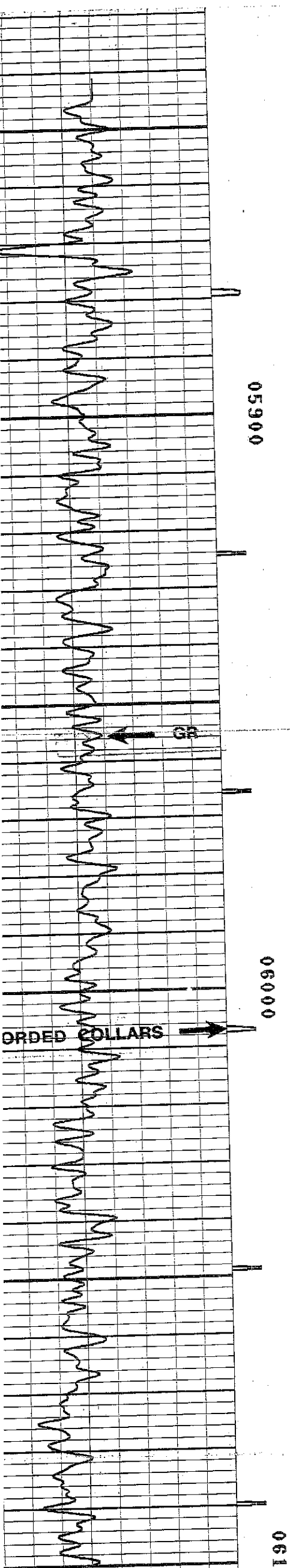
ARKS RUN (1)

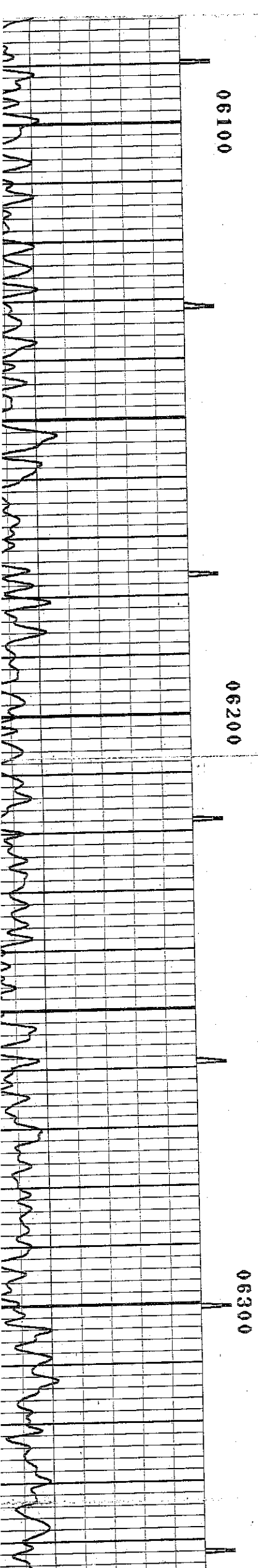
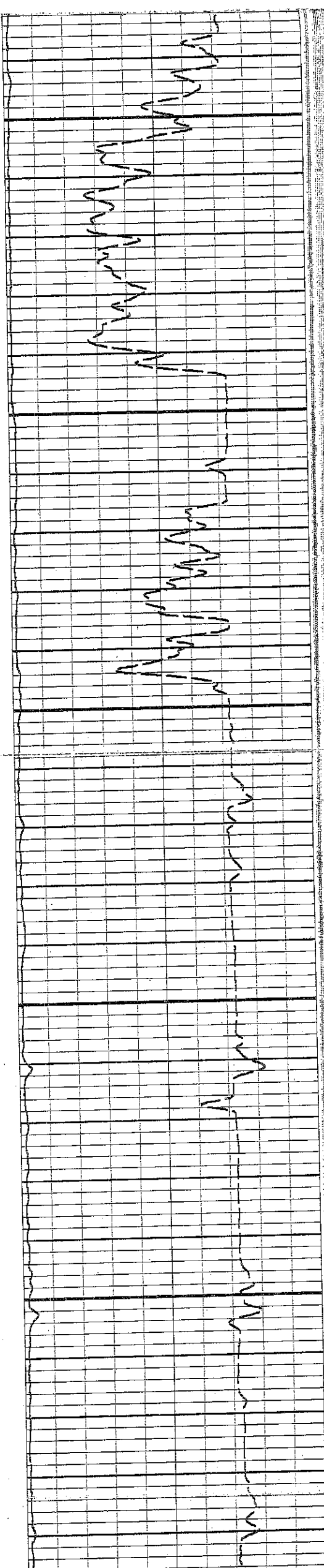
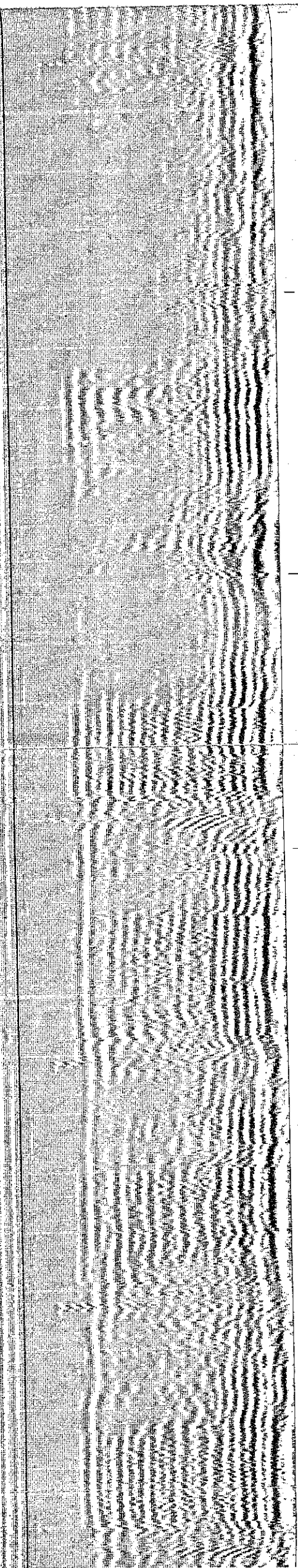
LOG CORRELATED TO DIFL/GR/CAL DATED 06-NOV-1994

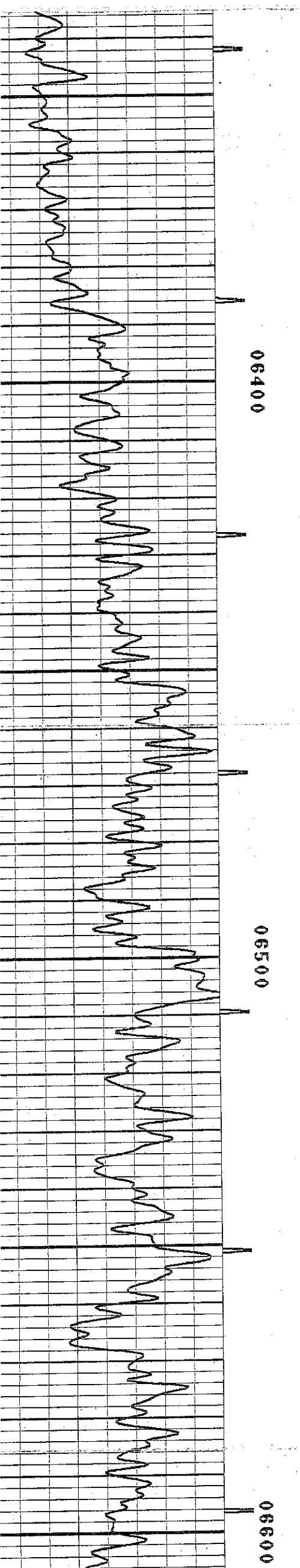
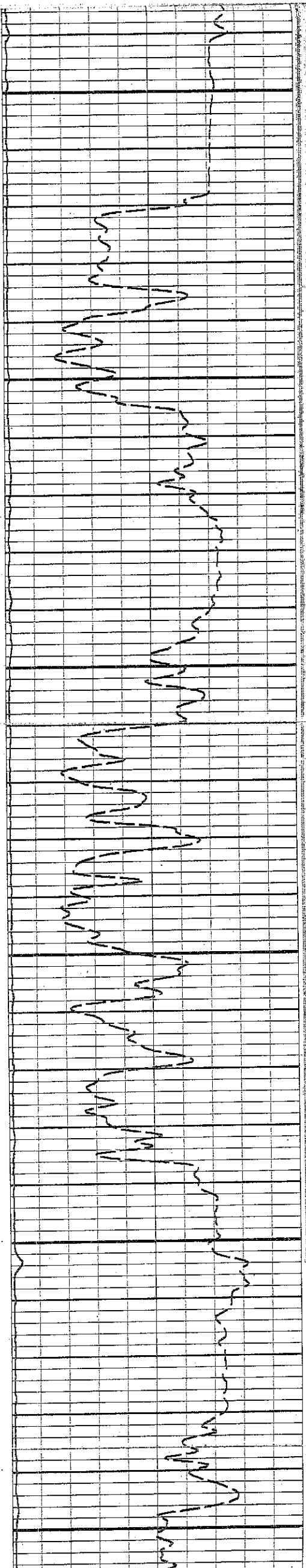
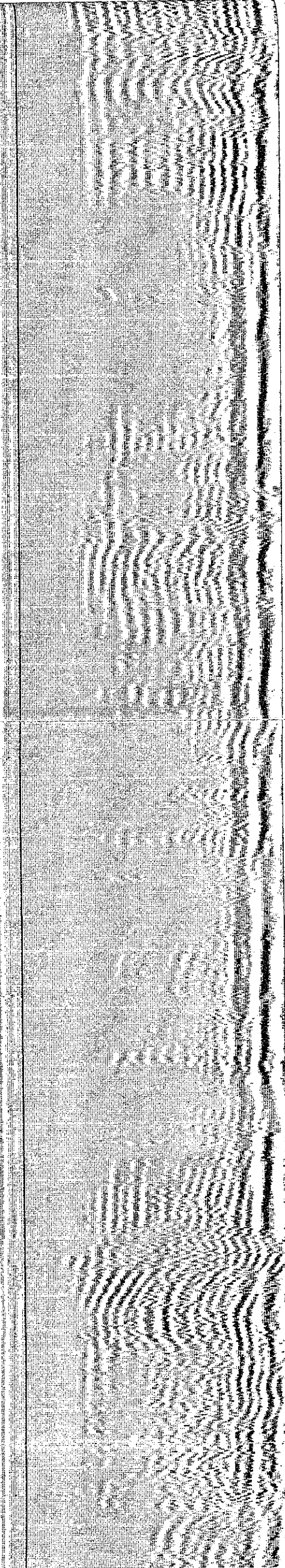
CREW: PATE, MARSHALL-J

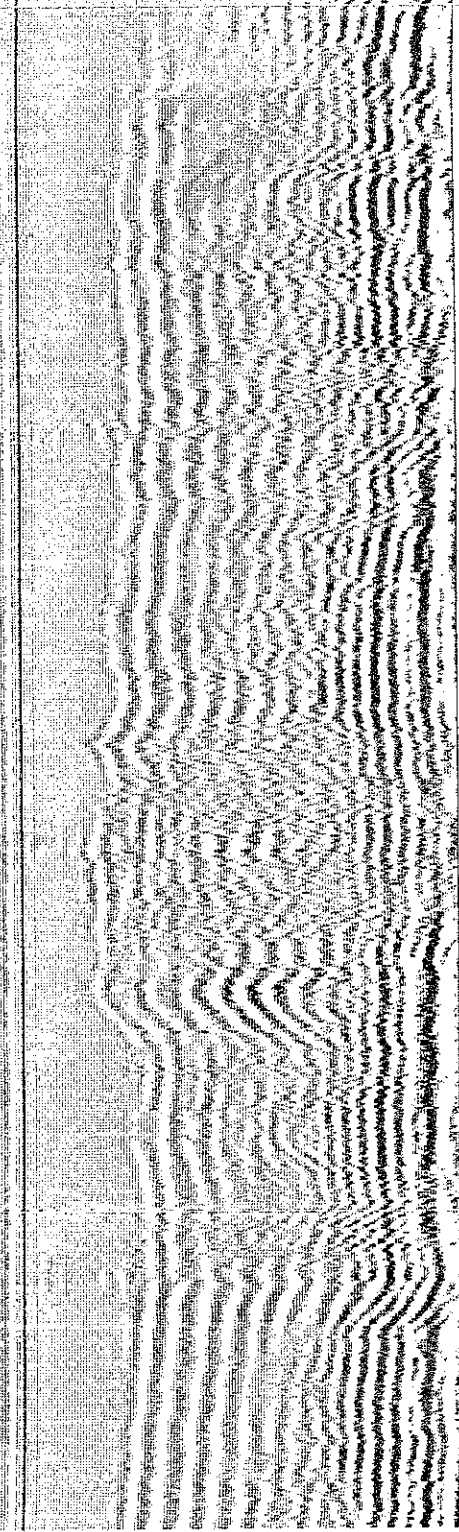
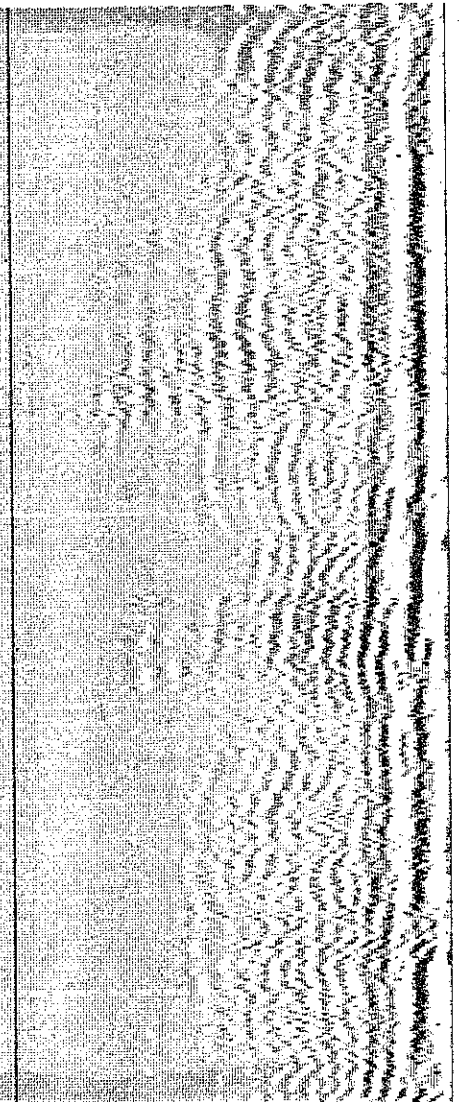
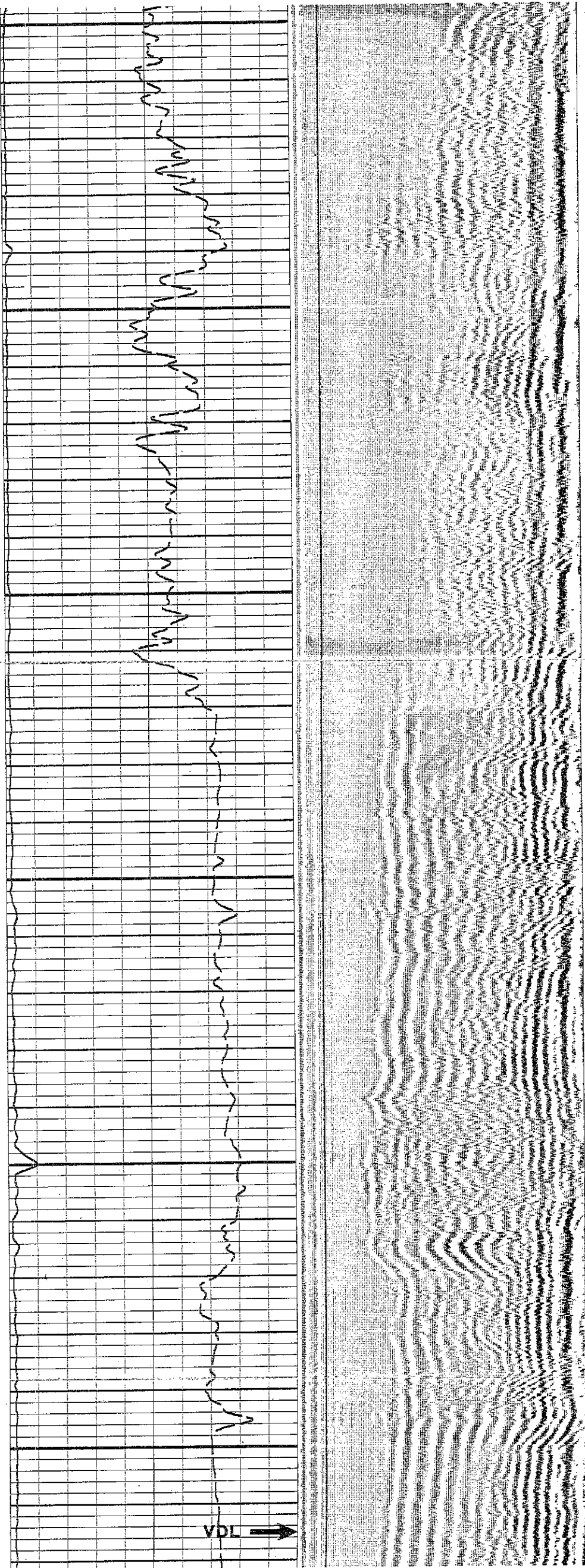
EQUIPMENT DATA

TRIP	TOOL	SERIAL NO.	SERIES NO.	POSITION
1	CBL	41903	1412	CENT.
1	GR	78700	1311	CENT.









0090

06700

06800

