

Photo#1:

Overview of Location from Entry to Northeast.



November 24, 2017

Photo#2:

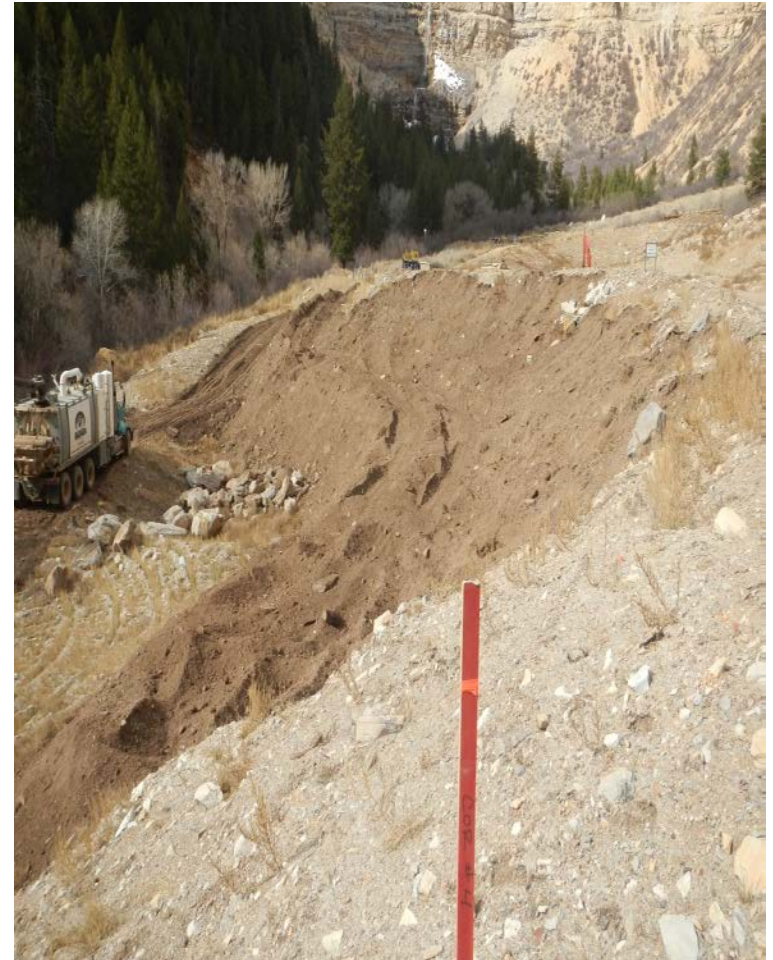
View from entry along expanded Fill Slope 11/24/17



November 24, 2017

Photo#3:

Vac truck working in same area 11/14/17



Photo#4:

View down Fill Slope to BMPs installed at base and Creek identified with arrow in background.



November 24, 2017

Photo#5:

View along Perimeter Ditch, showing migrating material filling in Ditch & overwhelming Wattles.



November 24, 2017

Photo#6:

View of BMPs installed at limits of Disturbance & immediate proximity of Creek, indicated by arrow



November 24, 2017

Photo#7:

View from Wattles to top of Fill Slope; Work area is very tight between the toe of the Fill Slope, Limits of Disturbance & the Creek



November 24, 2017

Photo#8:

Bench area installed along mid Cut Slope.



November 24, 2017