

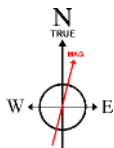
Location:	COLORADO	Slot:	SLOT#02 CRITTER CREEK #537-1807H (205'FSL & 803'FWL, SEC.18)
Field:	WELD COUNTY (NAD 83 / TN)	Well:	CRITTER CREEK #537-1807H ST01
Facility:	SEC.18-T11N-R63W	Wellbore:	CRITTER CREEK #537-1807H ST01 PWB

Plot reference wellpath is CRITTER CREEK #537-1807H ST01 PWP (REV-A.0)	Grid System: NAD83 / Lambert Colorado SP, Northern Zone (501), US feet
True vertical depths are referenced to UNIT 406 (21KB) (RKB)	* - Wellpath was transformed from a different geoidic datum
Measured depths are referenced to UNIT 406 (21KB) (RKB)	North Reference: True north
UNIT 406 (21KB) (RKB) to Mean Sea Level: 5357 feet	Scale: True distance
Mean Sea Level to Mud line (At Slot: SLOTH02 CRITTER CREEK #537-1807H (205FSL & 803FTH, SEC. 18)) 0 feet	Depths are in feet
Coordinates are in feet referenced to Slot	Created by: ingmjmr on 2017-11-21
	Database: Denver

Facility Name	Grid East (US ft)	Grid North (US ft)	Latitude	Longitude		
SEC 16-T11N R63W	3281216.643	1578010.303	40°54'56.080"N	104°28'57.080"W		
Spot	Local N (ft)	Local E (ft)	Grid East (US ft)	Grid North (US ft)	Latitude	Longitude
SLOT#02 CRITTER CREEK #537-1807H (205FSL & 803FPAW, SEC 18)	0.00	24.57	3281241.209	1578010.585	40°54'56.080"N	104°28'56.760"W
UNIT 406 (21'X08) (908) to Mud line (At Slot: SLOT#02 CRITTER CREEK #537-1807H (205FSL & 803FPAW, SEC 18))					5357ft	
Mean Sea Level to Mud line (At Slot: SLOT#02 CRITTER CREEK #537-1807H (205FSL & 803FPAW, SEC 18))					0ft	
UNIT 406 (21'X08) (908) to Mean Sea Level					5357ft	

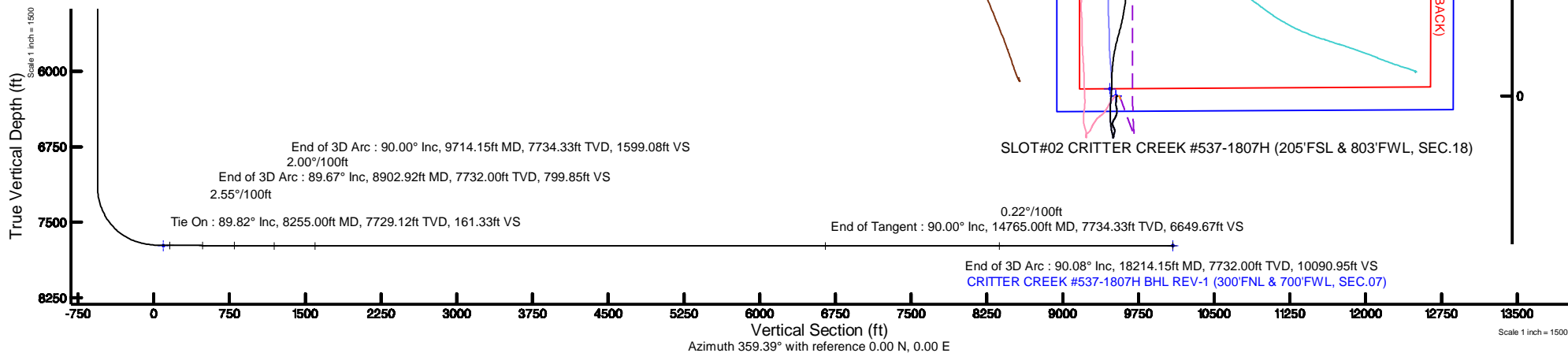
Start MD (ft)	End MD (ft)	Tool	Model	Log Name/Comment	Wellbore
21.00	1492.00	BHI NavTrak	Custom BHI NavTrak (Standard Roasting-Aval Core) (Rockies 0.030f model)		CRITTER CREEK #537-1807H AWB
1492.00	8255.00	BHI AutoTrak Curve	Custom BHI AutoTrak Curve (Aval Core, Short spacing) (Rockies 0.030f model)		CRITTER CREEK #537-1807H AWB
8255.00	18214.15	BHI AutoTrak Curve	Custom BHI AutoTrak Curve (Aval Core, Short spacing) (Rockies 0.030f model)		CRITTER CREEK #537-1807H ST01 FWB

Design Comment	MD (ft)	Inc (°)	Az (°)	TVD (ft)	Local N (ft)	Local E (ft)	DLS (°/100ft)	VS (ft)
Tie On	8255.00	89.820	359.650	7729.12	160.50	-79.00	0.00	161.33
End of 3D Arc	8902.92	89.673	16.196	7732.00	800.00	10.00	2.55	799.85
End of 3D Arc	9714.15	90.000	359.974	7734.33	1600.49	123.71	2.00	1599.08
End of Tangent	14765.00	90.000	359.974	7734.33	6651.33	121.42	0.00	6649.67
End of 3D Arc	18214.15	90.077	352.412	7732.00	10090.38	-107.44	0.22	10090.95



BGGM (1900.0 to 2019.0) Dip: 67.31° Field: 52690.6 nT
Magnetic North is 8.23 degrees East of True North (at 10/27/2017)

To correct azimuth from Magnetic to True add 8.23 degrees





Planned Wellpath Report

CRITTER CREEK #537-1807H ST01 PWP (REV-A.0)

Page 1 of 10



REFERENCE WELLPATH IDENTIFICATION

Operator	FIFTH CREEK ENERGY	Slot	SLOT#02 CRITTER CREEK #537-1807H (205'FSL & 803'FWL, SEC.18)
Area	COLORADO	Well	CRITTER CREEK #537-1807H ST01
Field	WELD COUNTY (NAD 83 / TN)	Wellbore	CRITTER CREEK #537-1807H ST01 PWB
Facility	SEC.18-T11N-R63W		

REPORT SETUP INFORMATION

Projection System	NAD83 / Lambert Colorado SP, Northern Zone (501), US feet	Software System	WellArchitect® 5.0
North Reference	True	User	Ingmjmr
Scale	1.000024	Report Generated	11/21/2017 at 9:56:23 AM
Convergence at slot	0.66° East	Database/Source file	Denver/CRITTER_CREEK_#537-1807H_ST01_PWP_REV-A.0_.xml

WELLPATH LOCATION

	Local coordinates		Grid coordinates		Geographic coordinates	
	North[ft]	East[ft]	Easting[US ft]	Northing[US ft]	Latitude	Longitude
Slot Location	0.00	24.57	3281241.21	1578010.59	40°54'56.080"N	104°28'56.760"W
Facility Reference Pt			3281216.64	1578010.30	40°54'56.080"N	104°28'57.080"W
Field Reference Pt			3310982.01	1578058.18	40°54'53.000"N	104°22'29.410"W

WELLPATH DATUM

Calculation method	Minimum curvature	UNIT 406 (21'KB) (RKB) to Facility Vertical Datum	5357.00ft
Horizontal Reference Pt	Slot	UNIT 406 (21'KB) (RKB) to Mean Sea Level	5357.00ft
Vertical Reference Pt	UNIT 406 (21'KB) (RKB)	UNIT 406 (21'KB) (RKB) to Mud Line at Slot (SLOT#02 CRITTER CREEK #537-1807H (205'FSL & 803'FWL, SEC.18))	5357.00ft
MD Reference Pt	UNIT 406 (21'KB) (RKB)	Section Origin	N 0.00, E 0.00 ft
Field Vertical Reference	Mean Sea Level	Section Azimuth	359.39°



Planned Wellpath Report

CRITTER CREEK #537-1807H ST01 PWP (REV-A.0)

Page 2 of 10



REFERENCE WELLPATH IDENTIFICATION			
Operator	FIFTH CREEK ENERGY	Slot	SLOT#02 CRITTER CREEK #537-1807H (205'FSL & 803'FWL, SEC.18)
Area	COLORADO	Well	CRITTER CREEK #537-1807H ST01
Field	WELD COUNTY (NAD 83 / TN)	Wellbore	CRITTER CREEK #537-1807H ST01 PWB
Facility	SEC.18-T11N-R63W		

WELLPATH DATA (189 stations) † = interpolated/extrapolated station										
MD [ft]	Inclination [°]	Azimuth [°]	TVD [ft]	Vert Sect [ft]	North [ft]	East [ft]	Latitude	Longitude	DLS [°/100ft]	Comments
0.00†	0.000	231.050	0.00	0.00	0.00	0.00	40°54'56.080"N	104°28'56.760"W	0.00	
21.00	0.000	231.050	21.00	0.00	0.00	0.00	40°54'56.080"N	104°28'56.760"W	0.00	
138.00	0.970	231.050	137.99	-0.61	-0.62	-0.77	40°54'56.074"N	104°28'56.770"W	0.83	
231.00	1.030	235.230	230.98	-1.57	-1.59	-2.07	40°54'56.064"N	104°28'56.787"W	0.10	
326.00	1.020	252.310	325.97	-2.30	-2.34	-3.58	40°54'56.057"N	104°28'56.807"W	0.32	
514.00	1.490	246.800	513.92	-3.73	-3.81	-7.42	40°54'56.042"N	104°28'56.857"W	0.26	
703.00	1.420	264.180	702.86	-4.89	-5.01	-12.01	40°54'56.030"N	104°28'56.916"W	0.24	
891.00	0.410	156.340	890.84	-5.72	-5.87	-14.05	40°54'56.022"N	104°28'56.943"W	0.85	
987.00	1.160	193.240	986.83	-6.98	-7.13	-14.14	40°54'56.010"N	104°28'56.944"W	0.90	
1083.00	2.770	192.240	1082.77	-10.18	-10.34	-14.85	40°54'55.978"N	104°28'56.953"W	1.68	
1177.00	4.270	191.030	1176.59	-15.82	-16.00	-16.00	40°54'55.922"N	104°28'56.968"W	1.60	
1272.00	6.270	176.670	1271.19	-24.47	-24.65	-16.38	40°54'55.836"N	104°28'56.973"W	2.51	
1366.00	8.520	182.450	1364.40	-36.55	-36.73	-16.38	40°54'55.717"N	104°28'56.973"W	2.52	
1460.00	9.830	184.660	1457.20	-51.50	-51.69	-17.33	40°54'55.569"N	104°28'56.986"W	1.44	
1492.00	11.070	185.340	1488.67	-57.27	-57.47	-17.84	40°54'55.512"N	104°28'56.992"W	3.89	
1600.00	11.750	187.120	1594.53	-78.48	-78.70	-20.16	40°54'55.302"N	104°28'57.023"W	0.71	
1696.00	12.180	185.990	1688.45	-98.23	-98.47	-22.43	40°54'55.107"N	104°28'57.052"W	0.51	
1792.00	12.390	173.100	1782.27	-118.53	-118.77	-22.25	40°54'54.906"N	104°28'57.050"W	2.86	
1887.00	11.780	168.110	1875.16	-138.17	-138.38	-19.03	40°54'54.713"N	104°28'57.008"W	1.27	
1981.00	11.710	170.000	1967.20	-156.99	-157.17	-15.40	40°54'54.527"N	104°28'56.961"W	0.42	
2075.00	11.850	172.010	2059.22	-175.98	-176.12	-12.40	40°54'54.340"N	104°28'56.921"W	0.46	
2170.00	11.750	175.320	2152.21	-195.30	-195.42	-10.25	40°54'54.149"N	104°28'56.894"W	0.72	
2265.00	11.790	185.030	2245.22	-214.61	-214.73	-10.31	40°54'53.958"N	104°28'56.894"W	2.08	
2361.00	12.140	190.880	2339.14	-234.26	-234.41	-13.08	40°54'53.764"N	104°28'56.930"W	1.31	
2456.00	12.240	198.210	2432.00	-253.58	-253.79	-18.11	40°54'53.572"N	104°28'56.996"W	1.63	
2551.00	12.170	202.500	2524.86	-272.32	-272.61	-25.09	40°54'53.386"N	104°28'57.087"W	0.96	
2646.00	11.690	210.150	2617.81	-289.81	-290.18	-33.76	40°54'53.213"N	104°28'57.200"W	1.74	
2741.00	12.310	215.960	2710.74	-306.21	-306.70	-44.54	40°54'53.050"N	104°28'57.340"W	1.43	
2836.00	12.300	209.530	2803.56	-323.10	-323.70	-55.47	40°54'52.882"N	104°28'57.483"W	1.44	
2931.00	12.580	196.950	2896.35	-341.71	-342.41	-63.48	40°54'52.697"N	104°28'57.587"W	2.86	



Planned Wellpath Report

CRITTER CREEK #537-1807H ST01 PWP (REV-A.0)

Page 3 of 10



REFERENCE WELLPATH IDENTIFICATION			
Operator	FIFTH CREEK ENERGY	Slot	SLOT#02 CRITTER CREEK #537-1807H (205'FSL & 803'FWL, SEC.18)
Area	COLORADO	Well	CRITTER CREEK #537-1807H ST01
Field	WELD COUNTY (NAD 83 / TN)	Wellbore	CRITTER CREEK #537-1807H ST01 PWB
Facility	SEC.18-T11N-R63W		

WELLPATH DATA (189 stations)

MD [ft]	Inclination [°]	Azimuth [°]	TVD [ft]	Vert Sect [ft]	North [ft]	East [ft]	Latitude	Longitude	DLS [°/100ft]	Comments
3026.00	13.060	188.150	2988.99	-362.19	-362.93	-68.02	40°54'52.494"N	104°28'57.646"W	2.11	
3121.00	13.220	167.990	3081.55	-383.46	-384.19	-67.28	40°54'52.284"N	104°28'57.636"W	4.80	
3215.00	12.900	152.290	3173.15	-403.34	-404.00	-60.16	40°54'52.088"N	104°28'57.544"W	3.78	
3310.00	12.130	150.020	3265.89	-421.48	-422.04	-50.24	40°54'51.910"N	104°28'57.414"W	0.96	
3405.00	11.800	165.530	3358.85	-439.61	-440.09	-42.82	40°54'51.732"N	104°28'57.318"W	3.39	
3500.00	12.160	176.370	3451.79	-459.04	-459.49	-39.76	40°54'51.540"N	104°28'57.278"W	2.40	
3596.00	12.190	189.510	3545.65	-479.12	-479.58	-40.80	40°54'51.341"N	104°28'57.291"W	2.88	
3690.00	11.160	195.570	3637.71	-497.62	-498.13	-44.88	40°54'51.158"N	104°28'57.345"W	1.70	
3785.00	9.490	197.300	3731.17	-513.91	-514.46	-49.68	40°54'50.997"N	104°28'57.407"W	1.79	
3881.00	7.140	185.370	3826.16	-527.37	-527.96	-52.59	40°54'50.863"N	104°28'57.445"W	3.02	
3976.00	5.210	181.070	3920.60	-537.56	-538.15	-53.22	40°54'50.763"N	104°28'57.453"W	2.09	
4071.00	4.250	215.010	4015.30	-544.73	-545.35	-55.32	40°54'50.692"N	104°28'57.481"W	3.06	
4166.00	3.850	223.550	4110.06	-549.88	-550.55	-59.54	40°54'50.640"N	104°28'57.536"W	0.76	
4261.00	0.850	104.250	4204.99	-552.35	-553.03	-61.06	40°54'50.616"N	104°28'57.555"W	4.56	
4356.00	0.430	165.280	4299.99	-552.88	-553.55	-60.28	40°54'50.610"N	104°28'57.545"W	0.78	
4450.00	0.070	242.690	4393.99	-553.25	-553.92	-60.24	40°54'50.607"N	104°28'57.545"W	0.45	
4544.00	0.120	115.830	4487.99	-553.32	-553.99	-60.21	40°54'50.606"N	104°28'57.544"W	0.18	
4639.00	0.070	201.430	4582.99	-553.41	-554.08	-60.14	40°54'50.605"N	104°28'57.543"W	0.14	
4733.00	0.030	6.370	4676.99	-553.44	-554.11	-60.16	40°54'50.605"N	104°28'57.544"W	0.11	
4828.00	0.030	152.160	4771.99	-553.44	-554.11	-60.14	40°54'50.605"N	104°28'57.543"W	0.06	
4923.00	0.070	341.420	4866.99	-553.41	-554.08	-60.15	40°54'50.605"N	104°28'57.543"W	0.10	
5017.00	0.070	144.540	4960.99	-553.40	-554.07	-60.13	40°54'50.605"N	104°28'57.543"W	0.15	
5111.00	0.060	172.950	5054.99	-553.49	-554.17	-60.09	40°54'50.604"N	104°28'57.543"W	0.04	
5205.00	0.090	234.580	5148.99	-553.59	-554.26	-60.15	40°54'50.604"N	104°28'57.543"W	0.09	
5301.00	0.070	84.390	5244.99	-553.62	-554.30	-60.15	40°54'50.603"N	104°28'57.543"W	0.16	
5396.00	0.030	311.400	5339.99	-553.60	-554.27	-60.11	40°54'50.603"N	104°28'57.543"W	0.10	
5492.00	0.040	6.010	5435.99	-553.55	-554.22	-60.13	40°54'50.604"N	104°28'57.543"W	0.03	
5587.00	0.030	232.150	5530.99	-553.53	-554.21	-60.14	40°54'50.604"N	104°28'57.543"W	0.07	
5682.00	0.100	200.060	5625.99	-553.63	-554.30	-60.19	40°54'50.603"N	104°28'57.544"W	0.08	
5778.00	0.060	70.130	5721.99	-553.69	-554.36	-60.17	40°54'50.602"N	104°28'57.544"W	0.15	



Planned Wellpath Report

CRITTER CREEK #537-1807H ST01 PWP (REV-A.0)

Page 4 of 10



REFERENCE WELLPATH IDENTIFICATION			
Operator	FIFTH CREEK ENERGY	Slot	SLOT#02 CRITTER CREEK #537-1807H (205'FSL & 803'FWL, SEC.18)
Area	COLORADO	Well	CRITTER CREEK #537-1807H ST01
Field	WELD COUNTY (NAD 83 / TN)	Wellbore	CRITTER CREEK #537-1807H ST01 PWB
Facility	SEC.18-T11N-R63W		

WELLPATH DATA (189 stations) † = interpolated/extrapolated station										
MD [ft]	Inclination [°]	Azimuth [°]	TVD [ft]	Vert Sect [ft]	North [ft]	East [ft]	Latitude	Longitude	DLS [°/100ft]	Comments
5873.00	0.040	251.200	5816.99	-553.68	-554.35	-60.16	40°54'50.603"N	104°28'57.544"W	0.11	
5969.00	0.300	104.230	5912.99	-553.76	-554.43	-59.95	40°54'50.602"N	104°28'57.541"W	0.35	
6065.00	0.100	146.050	6008.98	-553.89	-554.56	-59.66	40°54'50.601"N	104°28'57.537"W	0.24	
6160.00	0.190	187.040	6103.98	-554.12	-554.78	-59.63	40°54'50.598"N	104°28'57.537"W	0.14	
6255.00	0.380	225.260	6198.98	-554.49	-555.16	-59.87	40°54'50.595"N	104°28'57.540"W	0.27	
6351.00	0.040	327.000	6294.98	-554.69	-555.36	-60.12	40°54'50.593"N	104°28'57.543"W	0.41	
6447.00	0.030	161.380	6390.98	-554.68	-555.35	-60.13	40°54'50.593"N	104°28'57.543"W	0.07	
6542.00	0.070	329.020	6485.98	-554.66	-555.33	-60.15	40°54'50.593"N	104°28'57.543"W	0.10	
6638.00	0.060	279.100	6581.98	-554.60	-555.27	-60.23	40°54'50.594"N	104°28'57.544"W	0.06	
6734.00	0.040	206.560	6677.98	-554.62	-555.29	-60.29	40°54'50.593"N	104°28'57.545"W	0.06	
6829.00	0.040	38.690	6772.98	-554.62	-555.29	-60.29	40°54'50.593"N	104°28'57.545"W	0.08	
6925.00	0.110	242.420	6868.98	-554.64	-555.31	-60.35	40°54'50.593"N	104°28'57.546"W	0.15	
7020.00	0.000	8.230	6963.98	-554.68	-555.35	-60.43	40°54'50.593"N	104°28'57.547"W	0.12	
7115.00	0.040	76.490	7058.98	-554.67	-555.35	-60.40	40°54'50.593"N	104°28'57.547"W	0.04	
7211.00	1.700	133.510	7154.97	-555.65	-556.32	-59.33	40°54'50.583"N	104°28'57.533"W	1.75	
7305.00	10.450	353.400	7248.50	-548.12	-548.78	-59.30	40°54'50.658"N	104°28'57.532"W	12.56	
7400.00	19.460	346.250	7340.19	-524.09	-524.80	-64.06	40°54'50.895"N	104°28'57.594"W	9.66	
7495.00	29.240	345.670	7426.64	-486.05	-486.86	-73.59	40°54'51.269"N	104°28'57.718"W	10.30	
7589.00	37.610	350.910	7505.04	-435.27	-436.19	-83.82	40°54'51.770"N	104°28'57.852"W	9.41	
7684.00	47.720	354.080	7574.81	-371.44	-372.44	-92.05	40°54'52.400"N	104°28'57.959"W	10.88	
7779.00	57.920	356.290	7632.15	-296.05	-297.11	-98.29	40°54'53.144"N	104°28'58.040"W	10.89	
7874.00	67.000	1.000	7676.05	-211.94	-213.02	-100.14	40°54'53.975"N	104°28'58.064"W	10.52	
7969.00	76.360	4.040	7705.88	-122.01	-123.04	-96.12	40°54'54.864"N	104°28'58.012"W	10.31	
8064.00	82.960	5.160	7722.93	-28.99	-29.94	-88.61	40°54'55.784"N	104°28'57.914"W	7.04	
8160.00	89.910	3.370	7728.89	66.41	65.55	-81.50	40°54'56.728"N	104°28'57.822"W	7.47	
8255.00	89.820	359.650	7729.12	161.33	160.50	-79.00	40°54'57.666"N	104°28'57.789"W	0.00	Tie On
8355.00†	89.796	2.204	7729.45	261.29	260.48	-77.38	40°54'58.654"N	104°28'57.768"W	2.55	
8455.00†	89.773	4.757	7729.83	361.02	360.29	-71.31	40°54'59.640"N	104°28'57.689"W	2.55	
8555.00†	89.749	7.311	7730.24	460.34	459.72	-60.80	40°55'00.622"N	104°28'57.552"W	2.55	
8655.00†	89.727	9.865	7730.70	559.05	558.59	-45.87	40°55'01.599"N	104°28'57.357"W	2.55	



Planned Wellpath Report

CRITTER CREEK #537-1807H ST01 PWP (REV-A.0)

Page 5 of 10



REFERENCE WELLPATH IDENTIFICATION			
Operator	FIFTH CREEK ENERGY	Slot	SLOT#02 CRITTER CREEK #537-1807H (205'FSL & 803'FWL, SEC.18)
Area	COLORADO	Well	CRITTER CREEK #537-1807H ST01
Field	WELD COUNTY (NAD 83 / TN)	Wellbore	CRITTER CREEK #537-1807H ST01 PWB
Facility	SEC.18-T11N-R63W		

WELLPATH DATA (189 stations) † = interpolated/extrapolated station										
MD [ft]	Inclination [°]	Azimuth [°]	TVD [ft]	Vert Sect [ft]	North [ft]	East [ft]	Latitude	Longitude	DLS [°/100ft]	Comments
8755.00†	89.705	12.418	7731.20	656.94	656.70	-26.55	40°55'02.569"N	104°28'57.106"W	2.55	
8855.00†	89.683	14.972	7731.73	753.83	753.85	-2.87	40°55'03.529"N	104°28'56.797"W	2.55	
8902.92	89.673	16.196	7732.00	799.85	800.00	10.00	40°55'03.985"N	104°28'56.630"W	2.55	End of 3D Arc
8955.00†	89.694	15.154	7732.29	849.84	850.14	24.07	40°55'04.480"N	104°28'56.446"W	2.00	
9055.00†	89.733	13.154	7732.79	946.53	947.10	48.52	40°55'05.438"N	104°28'56.128"W	2.00	
9155.00†	89.773	11.155	7733.22	1044.05	1044.85	69.58	40°55'06.404"N	104°28'55.854"W	2.00	
9255.00†	89.813	9.155	7733.58	1142.29	1143.28	87.21	40°55'07.376"N	104°28'55.624"W	2.00	
9355.00†	89.854	7.156	7733.87	1241.12	1242.27	101.39	40°55'08.355"N	104°28'55.439"W	2.00	
9455.00†	89.894	5.156	7734.09	1340.41	1341.68	112.11	40°55'09.337"N	104°28'55.300"W	2.00	
9555.00†	89.935	3.156	7734.24	1440.06	1441.42	119.36	40°55'10.322"N	104°28'55.205"W	2.00	
9655.00†	89.976	1.157	7734.32	1539.94	1541.34	123.12	40°55'11.310"N	104°28'55.156"W	2.00	
9714.15	90.000	359.974	7734.33	1599.08	1600.49	123.71	40°55'11.894"N	104°28'55.149"W	2.00	End of 3D Arc
9755.00†	90.000	359.974	7734.33	1639.93	1641.34	123.69	40°55'12.298"N	104°28'55.149"W	0.00	
9855.00†	90.000	359.974	7734.33	1739.92	1741.34	123.64	40°55'13.286"N	104°28'55.149"W	0.00	
9955.00†	90.000	359.974	7734.33	1839.92	1841.34	123.60	40°55'14.274"N	104°28'55.150"W	0.00	
10055.00†	90.000	359.974	7734.33	1939.91	1941.34	123.55	40°55'15.262"N	104°28'55.151"W	0.00	
10155.00†	90.000	359.974	7734.33	2039.90	2041.34	123.51	40°55'16.250"N	104°28'55.151"W	0.00	
10255.00†	90.000	359.974	7734.33	2139.90	2141.34	123.46	40°55'17.238"N	104°28'55.152"W	0.00	
10355.00†	90.000	359.974	7734.33	2239.89	2241.34	123.42	40°55'18.226"N	104°28'55.152"W	0.00	
10455.00†	90.000	359.974	7734.33	2339.89	2341.34	123.37	40°55'19.214"N	104°28'55.153"W	0.00	
10555.00†	90.000	359.974	7734.33	2439.88	2441.34	123.33	40°55'20.202"N	104°28'55.153"W	0.00	
10655.00†	90.000	359.974	7734.33	2539.88	2541.34	123.28	40°55'21.190"N	104°28'55.154"W	0.00	
10755.00†	90.000	359.974	7734.33	2639.87	2641.34	123.24	40°55'22.178"N	104°28'55.155"W	0.00	
10855.00†	90.000	359.974	7734.33	2739.87	2741.34	123.19	40°55'23.166"N	104°28'55.155"W	0.00	
10955.00†	90.000	359.974	7734.33	2839.86	2841.34	123.15	40°55'24.154"N	104°28'55.156"W	0.00	
11055.00†	90.000	359.974	7734.33	2939.86	2941.34	123.10	40°55'25.143"N	104°28'55.156"W	0.00	
11155.00†	90.000	359.974	7734.33	3039.85	3041.34	123.05	40°55'26.131"N	104°28'55.157"W	0.00	
11255.00†	90.000	359.974	7734.33	3139.85	3141.34	123.01	40°55'27.119"N	104°28'55.158"W	0.00	
11355.00†	90.000	359.974	7734.33	3239.84	3241.34	122.96	40°55'28.107"N	104°28'55.158"W	0.00	
11455.00†	90.000	359.974	7734.33	3339.84	3341.34	122.92	40°55'29.095"N	104°28'55.159"W	0.00	



Planned Wellpath Report

CRITTER CREEK #537-1807H ST01 PWP (REV-A.0)

Page 6 of 10



REFERENCE WELLPATH IDENTIFICATION			
Operator	FIFTH CREEK ENERGY	Slot	SLOT#02 CRITTER CREEK #537-1807H (205'FSL & 803'FWL, SEC.18)
Area	COLORADO	Well	CRITTER CREEK #537-1807H ST01
Field	WELD COUNTY (NAD 83 / TN)	Wellbore	CRITTER CREEK #537-1807H ST01 PWB
Facility	SEC.18-T11N-R63W		

WELLPATH DATA (189 stations) † = interpolated/extrapolated station										
MD [ft]	Inclination [°]	Azimuth [°]	TVD [ft]	Vert Sect [ft]	North [ft]	East [ft]	Latitude	Longitude	DLS [°/100ft]	Comments
11555.00†	90.000	359.974	7734.33	3439.83	3441.34	122.87	40°55'30.083"N	104°28'55.159"W	0.00	
11655.00†	90.000	359.974	7734.33	3539.83	3541.34	122.83	40°55'31.071"N	104°28'55.160"W	0.00	
11755.00†	90.000	359.974	7734.33	3639.82	3641.34	122.78	40°55'32.059"N	104°28'55.160"W	0.00	
11855.00†	90.000	359.974	7734.33	3739.82	3741.34	122.74	40°55'33.047"N	104°28'55.161"W	0.00	
11955.00†	90.000	359.974	7734.33	3839.81	3841.34	122.69	40°55'34.035"N	104°28'55.162"W	0.00	
12055.00†	90.000	359.974	7734.33	3939.81	3941.34	122.65	40°55'35.023"N	104°28'55.162"W	0.00	
12155.00†	90.000	359.974	7734.33	4039.80	4041.34	122.60	40°55'36.011"N	104°28'55.163"W	0.00	
12255.00†	90.000	359.974	7734.33	4139.80	4141.34	122.56	40°55'36.999"N	104°28'55.163"W	0.00	
12355.00†	90.000	359.974	7734.33	4239.79	4241.34	122.51	40°55'37.987"N	104°28'55.164"W	0.00	
12455.00†	90.000	359.974	7734.33	4339.79	4341.34	122.46	40°55'38.976"N	104°28'55.165"W	0.00	
12555.00†	90.000	359.974	7734.33	4439.78	4441.34	122.42	40°55'39.964"N	104°28'55.165"W	0.00	
12655.00†	90.000	359.974	7734.33	4539.77	4541.34	122.37	40°55'40.952"N	104°28'55.166"W	0.00	
12755.00†	90.000	359.974	7734.33	4639.77	4641.34	122.33	40°55'41.940"N	104°28'55.166"W	0.00	
12855.00†	90.000	359.974	7734.33	4739.76	4741.34	122.28	40°55'42.928"N	104°28'55.167"W	0.00	
12955.00†	90.000	359.974	7734.33	4839.76	4841.34	122.24	40°55'43.916"N	104°28'55.168"W	0.00	
13055.00†	90.000	359.974	7734.33	4939.75	4941.34	122.19	40°55'44.904"N	104°28'55.168"W	0.00	
13155.00†	90.000	359.974	7734.33	5039.75	5041.34	122.15	40°55'45.892"N	104°28'55.169"W	0.00	
13255.00†	90.000	359.974	7734.33	5139.74	5141.34	122.10	40°55'46.880"N	104°28'55.169"W	0.00	
13355.00†	90.000	359.974	7734.33	5239.74	5241.34	122.06	40°55'47.868"N	104°28'55.170"W	0.00	
13455.00†	90.000	359.974	7734.33	5339.73	5341.34	122.01	40°55'48.856"N	104°28'55.170"W	0.00	
13555.00†	90.000	359.974	7734.33	5439.73	5441.34	121.97	40°55'49.844"N	104°28'55.171"W	0.00	
13655.00†	90.000	359.974	7734.33	5539.72	5541.34	121.92	40°55'50.832"N	104°28'55.172"W	0.00	
13755.00†	90.000	359.974	7734.33	5639.72	5641.34	121.87	40°55'51.820"N	104°28'55.172"W	0.00	
13855.00†	90.000	359.974	7734.33	5739.71	5741.34	121.83	40°55'52.809"N	104°28'55.173"W	0.00	
13955.00†	90.000	359.974	7734.33	5839.71	5841.34	121.78	40°55'53.797"N	104°28'55.173"W	0.00	
14055.00†	90.000	359.974	7734.33	5939.70	5941.34	121.74	40°55'54.785"N	104°28'55.174"W	0.00	
14155.00†	90.000	359.974	7734.33	6039.70	6041.33	121.69	40°55'55.773"N	104°28'55.175"W	0.00	
14255.00†	90.000	359.974	7734.33	6139.69	6141.33	121.65	40°55'56.761"N	104°28'55.175"W	0.00	
14355.00†	90.000	359.974	7734.33	6239.69	6241.33	121.60	40°55'57.749"N	104°28'55.176"W	0.00	
14455.00†	90.000	359.974	7734.33	6339.68	6341.33	121.56	40°55'58.737"N	104°28'55.176"W	0.00	



Planned Wellpath Report

CRITTER CREEK #537-1807H ST01 PWP (REV-A.0)

Page 7 of 10



REFERENCE WELLPATH IDENTIFICATION			
Operator	FIFTH CREEK ENERGY	Slot	SLOT#02 CRITTER CREEK #537-1807H (205'FSL & 803'FWL, SEC.18)
Area	COLORADO	Well	CRITTER CREEK #537-1807H ST01
Field	WELD COUNTY (NAD 83 / TN)	Wellbore	CRITTER CREEK #537-1807H ST01 PWB
Facility	SEC.18-T11N-R63W		

WELLPATH DATA (189 stations) † = interpolated/extrapolated station										
MD [ft]	Inclination [°]	Azimuth [°]	TVD [ft]	Vert Sect [ft]	North [ft]	East [ft]	Latitude	Longitude	DLS [°/100ft]	Comments
14555.00†	90.000	359.974	7734.33	6439.68	6441.33	121.51	40°55'59.725"N	104°28'55.177"W	0.00	
14655.00†	90.000	359.974	7734.33	6539.67	6541.33	121.47	40°56'00.713"N	104°28'55.177"W	0.00	
14755.00†	90.000	359.974	7734.33	6639.67	6641.33	121.42	40°56'01.701"N	104°28'55.178"W	0.00	
14765.00	90.000	359.974	7734.33	6649.67	6651.33	121.42	40°56'01.800"N	104°28'55.178"W	0.00	End of Tangent
14855.00†	90.002	359.777	7734.33	6739.66	6741.33	121.22	40°56'02.689"N	104°28'55.181"W	0.22	
14955.00†	90.004	359.557	7734.32	6839.66	6841.33	120.64	40°56'03.677"N	104°28'55.188"W	0.22	
15055.00†	90.007	359.338	7734.31	6939.66	6941.33	119.68	40°56'04.665"N	104°28'55.201"W	0.22	
15155.00†	90.009	359.119	7734.30	7039.66	7041.32	118.33	40°56'05.653"N	104°28'55.218"W	0.22	
15255.00†	90.011	358.900	7734.28	7139.66	7141.30	116.60	40°56'06.641"N	104°28'55.241"W	0.22	
15355.00†	90.013	358.680	7734.26	7239.65	7241.28	114.49	40°56'07.629"N	104°28'55.268"W	0.22	
15455.00†	90.015	358.461	7734.23	7339.64	7341.25	111.99	40°56'08.617"N	104°28'55.301"W	0.22	
15555.00†	90.018	358.242	7734.21	7439.63	7441.21	109.12	40°56'09.604"N	104°28'55.338"W	0.22	
15655.00†	90.020	358.023	7734.17	7539.60	7541.16	105.86	40°56'10.592"N	104°28'55.381"W	0.22	
15755.00†	90.022	357.803	7734.14	7639.57	7641.09	102.22	40°56'11.579"N	104°28'55.428"W	0.22	
15855.00†	90.024	357.584	7734.09	7739.52	7741.01	98.19	40°56'12.567"N	104°28'55.481"W	0.22	
15955.00†	90.027	357.365	7734.05	7839.47	7840.91	93.79	40°56'13.554"N	104°28'55.538"W	0.22	
16055.00†	90.029	357.146	7734.00	7939.40	7940.80	89.00	40°56'14.541"N	104°28'55.600"W	0.22	
16155.00†	90.031	356.926	7733.95	8039.31	8040.66	83.83	40°56'15.527"N	104°28'55.668"W	0.22	
16255.00†	90.033	356.707	7733.89	8139.21	8140.51	78.27	40°56'16.514"N	104°28'55.740"W	0.22	
16355.00†	90.036	356.488	7733.83	8239.09	8240.33	72.34	40°56'17.500"N	104°28'55.817"W	0.22	
16455.00†	90.038	356.269	7733.77	8338.96	8340.13	66.02	40°56'18.486"N	104°28'55.900"W	0.22	
16555.00†	90.040	356.049	7733.70	8438.80	8439.91	59.32	40°56'19.472"N	104°28'55.987"W	0.22	
16655.00†	90.042	355.830	7733.63	8538.62	8539.66	52.24	40°56'20.458"N	104°28'56.079"W	0.22	
16755.00†	90.045	355.611	7733.55	8638.41	8639.38	44.78	40°56'21.443"N	104°28'56.177"W	0.22	
16855.00†	90.047	355.392	7733.47	8738.18	8739.07	36.94	40°56'22.428"N	104°28'56.279"W	0.22	
16955.00†	90.049	355.172	7733.39	8837.92	8838.73	28.71	40°56'23.413"N	104°28'56.386"W	0.22	
17055.00†	90.051	354.953	7733.30	8937.64	8938.36	20.10	40°56'24.397"N	104°28'56.498"W	0.22	
17155.00†	90.054	354.734	7733.21	9037.32	9037.95	11.12	40°56'25.381"N	104°28'56.615"W	0.22	
17255.00†	90.056	354.515	7733.11	9136.98	9137.51	1.75	40°56'26.365"N	104°28'56.737"W	0.22	
17355.00†	90.058	354.295	7733.01	9236.60	9237.04	-8.00	40°56'27.348"N	104°28'56.864"W	0.22	



Planned Wellpath Report

CRITTER CREEK #537-1807H ST01 PWP (REV-A.0)

Page 8 of 10



REFERENCE WELLPATH IDENTIFICATION			
Operator	FIFTH CREEK ENERGY	Slot	SLOT#02 CRITTER CREEK #537-1807H (205'FSL & 803'FWL, SEC.18)
Area	COLORADO	Well	CRITTER CREEK #537-1807H ST01
Field	WELD COUNTY (NAD 83 / TN)	Wellbore	CRITTER CREEK #537-1807H ST01 PWB
Facility	SEC.18-T11N-R63W		

WELLPATH DATA (189 stations) † = interpolated/extrapolated station										
MD [ft]	Inclination [°]	Azimuth [°]	TVD [ft]	Vert Sect [ft]	North [ft]	East [ft]	Latitude	Longitude	DLS [°/100ft]	Comments
17455.00†	90.060	354.076	7732.91	9336.19	9336.52	-18.13	40°56'28.331"N	104°28'56.996"W	0.22	
17555.00†	90.063	353.857	7732.80	9435.74	9435.97	-28.64	40°56'29.314"N	104°28'57.133"W	0.22	
17655.00†	90.065	353.638	7732.69	9535.25	9535.37	-39.53	40°56'30.296"N	104°28'57.275"W	0.22	
17755.00†	90.067	353.418	7732.58	9634.73	9634.74	-50.81	40°56'31.278"N	104°28'57.422"W	0.22	
17855.00†	90.069	353.199	7732.46	9734.17	9734.06	-62.46	40°56'32.259"N	104°28'57.574"W	0.22	
17955.00†	90.071	352.980	7732.34	9833.56	9833.33	-74.49	40°56'33.240"N	104°28'57.731"W	0.22	
18055.00†	90.074	352.761	7732.21	9932.92	9932.56	-86.90	40°56'34.221"N	104°28'57.892"W	0.22	
18155.00†	90.076	352.541	7732.08	10032.23	10031.73	-99.69	40°56'35.201"N	104°28'58.059"W	0.22	
18214.15	90.077	352.412	7732.00†	10090.95	10090.38	-107.44	40°56'35.780"N	104°28'58.160"W	0.22	End of 3D Arc

TARGETS									
Name	MD [ft]	TVD [ft]	North [ft]	East [ft]	Grid East [US ft]	Grid North [US ft]	Latitude	Longitude	Shape
SEC.07-T11N-R63W		0.00	0.00	-24.57	3281216.64	1578010.30	40°54'56.080"N	104°28'57.080"W	polygon
SEC.18-T11N-R63W		0.00	0.00	-24.57	3281216.64	1578010.30	40°54'56.080"N	104°28'57.080"W	polygon
SEC.07/18-T11N-R63W (460'SETBACK)		7470.00	0.00	-24.57	3281216.64	1578010.30	40°54'56.080"N	104°28'57.080"W	polygon
1) CRITTER CREEK #537-1807H BHL REV-1 (300'FNL & 700'FWL, SEC.07)	18214.15	7732.00	10090.38	-107.44	3281017.99	1588099.29	40°56'35.780"N	104°28'58.160"W	point
CRITTER CREEK #537-1807H LP REV-1 (300'FSL & 700'FWL, SEC.18)		7732.00	94.12	-102.88	3281137.26	1578103.52	40°54'57.010"N	104°28'58.100"W	point



Planned Wellpath Report

CRITTER CREEK #537-1807H ST01 PWP (REV-A.0)

Page 9 of 10



REFERENCE WELLPATH IDENTIFICATION			
Operator	FIFTH CREEK ENERGY	Slot	SLOT#02 CRITTER CREEK #537-1807H (205'FSL & 803'FWL, SEC.18)
Area	COLORADO	Well	CRITTER CREEK #537-1807H ST01
Field	WELD COUNTY (NAD 83 / TN)	Wellbore	CRITTER CREEK #537-1807H ST01 PWB
Facility	SEC.18-T11N-R63W		

SURVEY PROGRAM - Ref Wellbore: CRITTER CREEK #537-1807H ST01 PWB Ref Wellpath: CRITTER CREEK #537-1807H ST01 PWP (REV-A.0)				
Start MD [ft]	End MD [ft]	Positional Uncertainty Model	Log Name/Comment	Wellbore
21.00	1492.00	Custom BHI NaviTrak (Standard Rotating+Axial Corr) (Rockies 0.03Gt model)		CRITTER CREEK #537-1807H AWB
1492.00	8255.00	Custom BHI AutoTrak Curve (Axial Corr, Short spacing) (Rockies 0.03Gt model)		CRITTER CREEK #537-1807H AWB
8255.00	18214.15	Custom BHI AutoTrak Curve (Axial Corr, Short spacing) (Rockies 0.03Gt model)		CRITTER CREEK #537-1807H ST01 PWB



Planned Wellpath Report

CRITTER CREEK #537-1807H ST01 PWP (REV-A.0)

Page 10 of 10



REFERENCE WELLPATH IDENTIFICATION			
Operator	FIFTH CREEK ENERGY	Slot	SLOT#02 CRITTER CREEK #537-1807H (205'FSL & 803'FWL, SEC.18)
Area	COLORADO	Well	CRITTER CREEK #537-1807H ST01
Field	WELD COUNTY (NAD 83 / TN)	Wellbore	CRITTER CREEK #537-1807H ST01 PWB
Facility	SEC.18-T11N-R63W		

DESIGN COMMENTS				
MD [ft]	Inclination [°]	Azimuth [°]	TVD [ft]	Comment
8255.00	89.820	359.650	7729.12	Tie On
8902.92	89.673	16.196	7732.00	End of 3D Arc
9714.15	90.000	359.974	7734.33	End of 3D Arc
14765.00	90.000	359.974	7734.33	End of Tangent
18214.15	90.077	352.412	7732.00	End of 3D Arc