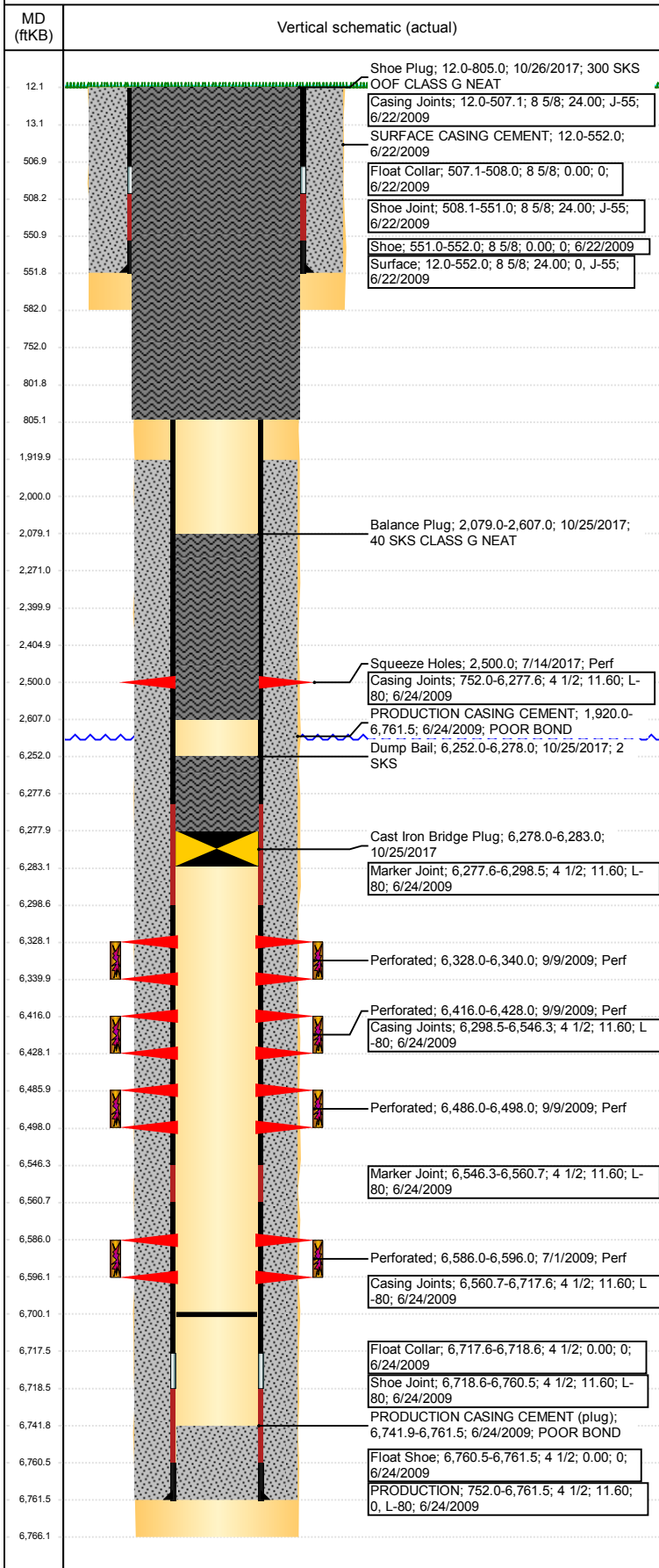


Well Name: WELLS RANCH BB12-02

VERTICAL - ORIGINAL HOLE, 11/27/2017 8:04:27 AM



Well Header

API 05-123-30130	Business Unit DJ BASIN	District 15	Well Config VERTICAL
Original KB Elevation (ft) 4,660	KB - GL / MSL (ftKB) 12.00	Spud Date 6/22/2009	P & A Date 10/26/2017

Comment

Directions To Well

Wells Ranch BB12-02; WCR 67 & 68, E .2, S 2.75, past cow camp, E/SE 2.5, S 1, NW Into location.

Congressional Location

Quarter 3 NW	Quarter 4 NE	Section 12	Township 5	Twntshp N/S Dir N	Range 63	Range E/W Dir W
-----------------	-----------------	---------------	---------------	----------------------	-------------	--------------------

Bottom Hole Location

North-South Distance (ft) 681.0	From N or S Line FNL	East-West Distance (ft) 2,086.0	From E or W Line FEL
------------------------------------	-------------------------	------------------------------------	-------------------------

Plug Back Total Depths

Date	Depth (ftKB)	Method	Com
6/24/2009	6,717.6	CASING TALLY	CBL DEPTH LOGGER RIH W/ WORK STRING, BIT & SCRAPER TO CLEA... DRILL 3 COMPOSITE FLOW THRU PLUGS W/ CU...
6/30/2009	6,699.0	CASED HOLE LOG	
7/15/2009	6,741.9	TAG	
10/28/2009	6,709.0	TUBING TALLY	
7/22/2016	6,700.0	TAG	

Wellbore Sections

Section Des	Size (in)	Act Top, MD (ftKB)	Act Btm, MD (ftKB)
SURFACE	12 1/4	12	582
PRODUCTION	7 7/8	582	6,766

Zone Statuses

Zone Name	Status Date	Status	Fluid Type	Job	Prod Method
NIOBRARA	9/11/2009	PR	Water	DRILLING/CO...	Flowing
NIOBRARA	1/31/2011	PR		ABANDON WE...	
NIOBRARA	1/28/2016	PR		DRILLING/CO...	
NIOBRARA	10/25/2017	P&A	Water	ABANDON WE...	Flowing
CODELL	9/11/2009	PR		DRILLING/CO...	
CODELL	1/31/2011	PR		ABANDON WE...	
CODELL	10/25/2017	P&A		ABANDON WE...	

Casing Strings

Surface, 552.0ftKB

Casing Description	Run Date	OD (in)	Wt/Len (l...)	Grade	Top, MD (ft...)	MD (ftKB)
Surface	6/22/2009	8 5/8	24.00	J-55	12.0	552.0

PRODUCTION, 6,761.5ftKB

Casing Description	Run Date	OD (in)	Wt/Len (l...)	Grade	Top, MD (ft...)	MD (ftKB)
PRODUCTION	6/24/2009	4 1/2	11.60	L-80	12.0	6,761.5

Cement

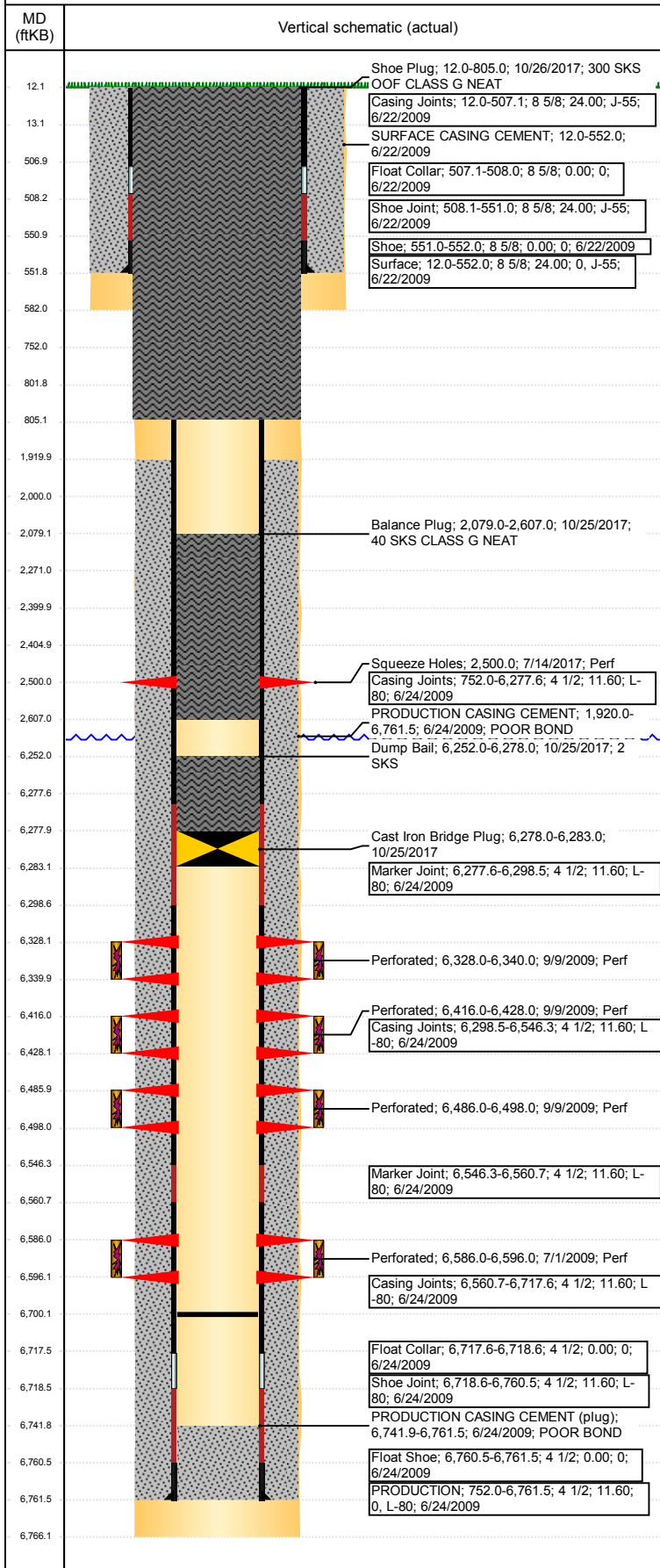
Description	Top Depth (ftKB)	Bottom Depth (ftKB)
SURFACE CASING CEMENT	12.0	552.0
PRODUCTION CASING CEMENT	1,920.0	6,761.5
Dump Bail	6,252.0	6,278.0
Balance Plug	752.0	802.0
Shoe Plug	12.0	752.0
Cement Plug	2,405.0	2,500.0
Cement Plug	2,271.0	2,400.0
Cement Squeeze	2,000.0	2,500.0
Dump Bail	6,252.0	6,278.0
Balance Plug	2,079.0	2,607.0
Shoe Plug	12.0	805.0

Tubing Strings

Tubing Description	Run Date	String...	ID (in)	Wt (lb/ft)	Grade	Len (ft)	Set De...
Tubing - Production	10/28/2009	2 3/8	2.00	4.70	J-55	6,555.11	6,563.2

Well Name: WELLS RANCH BB12-02

VERTICAL - ORIGINAL HOLE, 11/27/2017 8:04:27 AM



Tubing Components							
Item Des	OD (in)	Wt (lb/ft)	Grade	Jts	Len (ft)	Btm (ftKB)	Btm (TVD) (ftKB)
Tubing Pup Joint	2 3/8	4.70	J-55	1	10.00	22.0	
Tubing	2 3/8	4.70	J-55	212	6,543.22	6,565.2	
Pump Seating Nipple	2 3/8			1	1.10	6,566.3	6,562.4
Cutrite Blade Bit	3 7/8			1	0.79	6,567.1	6,563.2
Tubing Description	Run Date	String...	ID (in)	Wt (lb/ft)	Grade	Len (ft)	Set De...
Tubing - Production	7/25/2016	2 3/8	2.00	4.70	J-55	6,556.75	6,564.8

Tubing Components							
Item Des	OD (in)	Wt (lb/ft)	Grade	Jts	Len (ft)	Btm (ftKB)	Btm (TVD) (ftKB)
Tubing Pup Joint	2 3/8	4.70	J-55	1	10.00	22.0	
Tubing	2 3/8	4.70	J-55	212	6,545.10	6,567.1	
Profile Nipple XN	2 3/8			1	1.10	6,568.2	6,564.2
Notched collar	2 3/8			1	0.55	6,568.8	6,564.8

Other In Hole				
Run Date	Des	OD (in)	Top (ftKB)	Btm (ftKB)
7/14/2017	Cement Retainer	3.99	2,400.0	2,405.0
10/25/2017	Cast Iron Bridge Plug	3.99	6,278.0	6,283.0

Logs			
Date	Type	Top, MD (ftKB)	Btm, MD (ftKB)
6/24/2009	Caliper/Comp. Density/Neutron/GR/SP/ML	2,560.0	6,747.0
6/24/2009	DIL/GR/SP/Caliper	562.0	6,767.0
6/30/2009	CBL/CCL/GR	1,080.0	6,692.0
6/30/2009	GYRO	12.0	6,450.0

Perforation Data					
Linked Zone	Brnch/St g	Sum of Entered Shot Total	Top (ftKB)	Btm (ftKB)	Date
NIOBRARA, ORIGINAL HOLE	A	0	2,500.00	2,500.00	7/14/2017
NIOBRARA, ORIGINAL HOLE	B	24	6,328.00	6,340.00	9/9/2009
NIOBRARA, ORIGINAL HOLE	C	24	6,416.00	6,428.00	9/9/2009
CODELL, ORIGINAL HOLE		40	6,486.00	6,498.00	9/9/2009
CODELL, ORIGINAL HOLE			6,586.00	6,596.00	7/1/2009
Total (Sum)		112			

Stimulation Intervals		
Start Date	Primary Job Type	
9/9/2009	DRILLING/COMPLETION - ORIGINAL	
Technical Result	Tech Result Details	Tech Result Note
Success	According to Plan	
Comment		
(CODELL):TREATMENT WENT WELL NO ISSUES TO REPORT. AVG VISC 28.4 CPS AVG TEMP 71.7F AVG PH 10.15. POST JOB 5 MINUTE OF 3064 PSI.		
Start Date	Primary Job Type	
9/9/2009	DRILLING/COMPLETION - ORIGINAL	
Technical Result	Tech Result Details	Tech Result Note
Success	According to Plan	
Comment		
(NIOBRARA"C"): LOST TWO FLUID ENDS ON FRAC PUMPS AT BEGINING OF JOB. A FRAC PUMP CAME OFF LINE BY IT'S SELF DURING THE 2 PSA STAGE TWICE. THE TRANSDUCER CABLE CAME LOOSE. DROPPED RATE TO RUN ACID CORRECTLY. TREATMENT WENT WELL. OVERFLUSHED BY 10 BBLs. AVG VISC 24.8 CPS AVG TEMP 72.7F AVG PH 10.15. POST JOB 5 MINUTE OF 2969 PSI.		
Start Date	Primary Job Type	
9/9/2009	DRILLING/COMPLETION - ORIGINAL	
Technical Result	Tech Result Details	Tech Result Note
Success	According to Plan	
Comment		
(NIOBRARA"B"): TREATMENT WENT WELL. AVG VISC 24.4 CPS AVG TEMP 73.0F AVG PH 10.1. POST JOB 5 MINUTE OF 3181 PSI.		
Start Date	Primary Job Type	
9/9/2009	DRILLING/COMPLETION - ORIGINAL	
Technical Result	Tech Result Details	Tech Result Note
Success	According to Plan	
Comment		
(NIOBRARA"A"): TREATMENT WENT WELL. AVG VISC 24.4 CPS AVG TEMP 73.6F AVG PH 10.12. POST JOB 5 MINUTE OF 3090 PSI.		