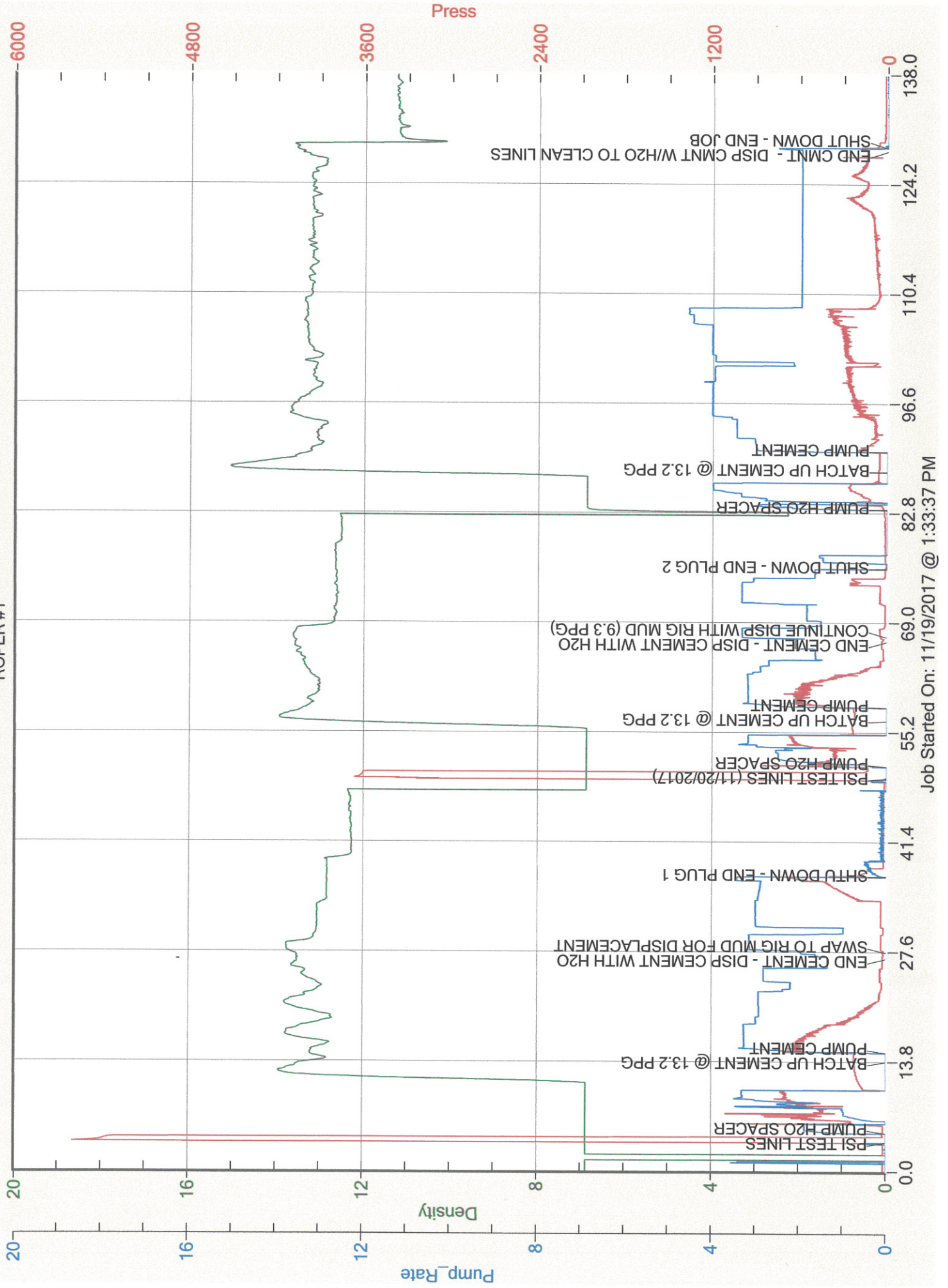


CUSTOMER OR HIS AGENT SIGNATURE

EAST CHEYNNNE GAS STORAGE

ROPER #1





Service Order #: 75236C

Date: 20-Nov-17

Well Name	Location	County	St	API#		
ROPER #1		LOGAN	CO	05-075-08449		
Formation	Cement Via	Type Of Service	Well Type	Age	AFE#	PO#
	TUBING	PLUG	GAS	REWORK		

Customer: EAST CHEYNNE GAS STORAGE, LLC.

Remarks: Plug 1: 109 sks / 32.6 bbls (5430 - 4888)
*Tagged @ 4995
Plug 2: 75 sks / 22.4 bbls (4456 - 4084)
Plug 3: 367 sks / 109.8 bbls (1233 - 0)

Customer Rep: STEVE OWENS

PH:

WELLBORE DATA				
Type	Size	Weight	Depth	Volume
Surface Casing:				
Production Casing:				
Intermediate:				
Drill Pipe:				
Tubing:	2.875	6.5	5,430.0	

Type	Size	Depth (Top)	Depth (Bot)	Volume
Liner:				
Open Hole:	7.875		5,430.0	

OTHER DATA		
BHT	Max PSI	Total Depth
	2,500	5,430.0

Packer or RetainerType / Depth:

--	--

Perf Depths: # Total

TIME	PUMP RATES		DENSITY (lb/gl)	PRESS (psi)	STG TOT (bbls)	TOTAL (bbls)	REMARKS
	WATER (gpm)	PUMP (bpm)					
14:14	0	0.2	6.88	5,595		0.1	PSI TEST LINES
14:16	0	0.0	6.88	25		0.0	PUMP H2O SPACER
14:25	73	0.0	13.20	219		0.0	BATCH UP CEMENT @ 13.2 PPG
14:26	0	0.0	13.21	223		0.0	PUMP CEMENT
14:38	0	1.3	13.50	25		32.7	END CEMENT - DISP CEMENT WITH H2O
14:39	0	2.0	13.65	25		1.2	SWAP TO RIG MUD FOR DISPLACEMENT
14:48	0	3.2	12.83	545		27.0	SHTU DOWN - END PLUG 1
11:21	0	0.0	6.88	3,661		0.1	PSI TEST LINES (11/20/2017)
11:22	0	0.3	6.88	432		0.0	PUMP H2O SPACER
11:28	49	0.0	13.35	219		0.0	BATCH UP CEMENT @ 13.2 PPG
11:30	75	0.2	13.30	310		0.0	PUMP CEMENT
11:38	0	2.1	13.55	36		22.5	END CEMENT - DISP CEMENT WITH H2O
11:39	0	3.3	13.62	43		1.2	CONTINUE DISP WITH RIG MUD (9.3 PPG)
11:48	0	1.6	12.65	13		22.0	SHUT DOWN - END PLUG 2
15:00	0	0.7	6.82	19		0.0	PUMP H2O SPACER
15:05	45	0.0	13.26	61		0.0	BATCH UP CEMENT @ 13.2 PPG
15:08	0	1.7	13.21	146		0.0	PUMP CEMENT
15:46	0	2.0	13.48	136		109.8	END CMNT - DISP CMNT W/H2O TO CLEAN LINES
15:47	0	2.5	13.55	179		0.8	SHUT DOWN - END JOB

Summary

Max Fl. Rate Avg Fl. Rate Max Psi Avg Psi
3.3 1.1 5,595 191

Customer Acknowledgement:

Service Rating:

- ☐ Satisfactory
☐ Unsatisfactory

Cementer:

Cory Thaut

PRODUCTS USED

A SERV LITE + 2% CaCl



Service Order #: 75236C

Date: 20-Nov-17

Customer Acknowledgement:

Service Rating:

- ☐ Satisfactory
☐ Unsatisfactory

Cementer:

Cory Thaut

PRODUCTS USED

A SERV LITE + 2% CaCl