

1 Job Details & Summary

1.1 Geometry

| Type | Function | OD (in) | ID (in) | Weight (lb/ft) | Top (ft) | Bottom (ft) |
|-----------|----------|---------|---------|----------------|----------|-------------|
| Casing | Outer | 8.625 | 8.097 | 24 | 0 | 428 |
| Open Hole | Outer | n/a | 7.88 | n/a | 434 | 4750 |
| DrillPipe | Inner | 4 | 3.34 | 14 | 0 | 4750 |

1.2 Equipment / People

| Unit Type | Unit | Employee #1 | Employee #2 | Mileage |
|--------------------|----------|-------------------|----------------|---------|
| Cement Pump | C938 | Martinez, Michael | | 352 |
| Bulk Trailer | PPC41312 | Bryson, Maurice | | 352 |
| Light Duty Pickups | 6 | Staples, Anthony | Tolman, Travis | 352 |

1.3 Timing

| Event | Date/Time |
|-----------------|------------------|
| Call Out | 10/26/2017 21:00 |
| Depart Facility | 10/26/2017 22:20 |
| On Location | 10/27/2017 02:00 |
| Rig Up Iron | 10/27/2017 02:45 |
| Job Started | 10/27/2017 04:15 |
| Job Completed | 10/27/2017 14:00 |
| Rig Down Iron | 10/27/2017 14:45 |
| Depart Location | 10/27/2017 15:30 |

1.4 General Job Information

| Metrics | Value |
|-------------------------|------------|
| Well Fluid Density | 9.2 lb/gal |
| Well Fluid Type | WBM |
| Calculated Displacement | 48 bbls |
| Actual Displacement | 48 bbls |

1.5 Job Details

| Metrics | Value |
|--------------------------------|------------|
| Flare Prior to Job | No |
| Flare During Job | No |
| Flare at End of Job | No |
| Well Full Prior to Job | Yes |
| Well Fluid Density Into Well | 9.2 lb/gal |
| Well Fluid Density Out of Well | 9.2 lb/gal |

1.6 Job Details (cont.)

| Metrics | Value |
|---------|--------|
| BHCT | 120 °F |
| BHST | 140 °F |

1.7 Circulation

| |
|------------------------------|
| Lost Circulation Experienced |
| No |



1.8 Job Execution Information

| Job | Fluid | Product | Function | Density (lb/gal) | Yield (ft ³ /sk) | Water Rq. (gal/sk) | Water Rq. (gal/bbl) | Volume (sks) | Volume (bbl) | Top (ft) |
|-----|-------|-----------------------------|-------------------|---------------------|--------------------------------|--------------------------|---------------------------|-----------------|-----------------|-------------|
| 1 | 1 | Water | Flush | 8.33 | | | 42.00 | | 10.00 | 0 |
| 1 | 2 | J-Sand Plug | Plug | 15.80 | 1.15 | 4.96 | | 60.00 | 12.00 | 4411 |
| 1 | 3 | Water | DisplacementFinal | 8.33 | | | 42.00 | | 48.00 | 4411 |
| 1 | 4 | Water | Flush | 8.33 | | | 42.00 | | 10.00 | 0 |
| 1 | 5 | Plug 2 - Surface Shoe | Plug | 15.80 | 1.16 | 4.99 | | 50.00 | 10.36 | 324 |
| 1 | 6 | Water | DisplacementFinal | 8.33 | | | 42.00 | | 0.00 | 0 |
| 1 | 7 | Surface Plug | Plug | 15.80 | 1.16 | 4.99 | | 25.00 | 5.18 | 0 |
| 1 | 8 | Water | DisplacementFinal | 8.33 | | | 42.00 | | 0.00 | 0 |

1.9 Job Fluid Details

| Job | Fluid | Type | Fluid | Product | Function | Conc. | Uom |
|-----|-------|------|-----------------------|---------|-------------|--------|-------|
| 1 | 2 | Plug | J-Sand Plug | ACG-10 | Cement | 100.00 | % |
| 1 | 2 | Plug | J-Sand Plug | ADS-10 | Dispersant | 0.00 | %BWOB |
| 1 | 5 | Plug | Plug 2 - Surface Shoe | ACG-10 | Cement | 100.00 | % |
| 1 | 5 | Plug | Plug 2 - Surface Shoe | ACL-10 | Accelerator | 0.00 | %BWOB |
| 1 | 7 | Plug | Surface Plug | ACG-10 | Cement | 100.00 | % |
| 1 | 7 | Plug | Surface Plug | ACL-10 | Accelerator | 0.00 | %BWOB |



2 Job Logs

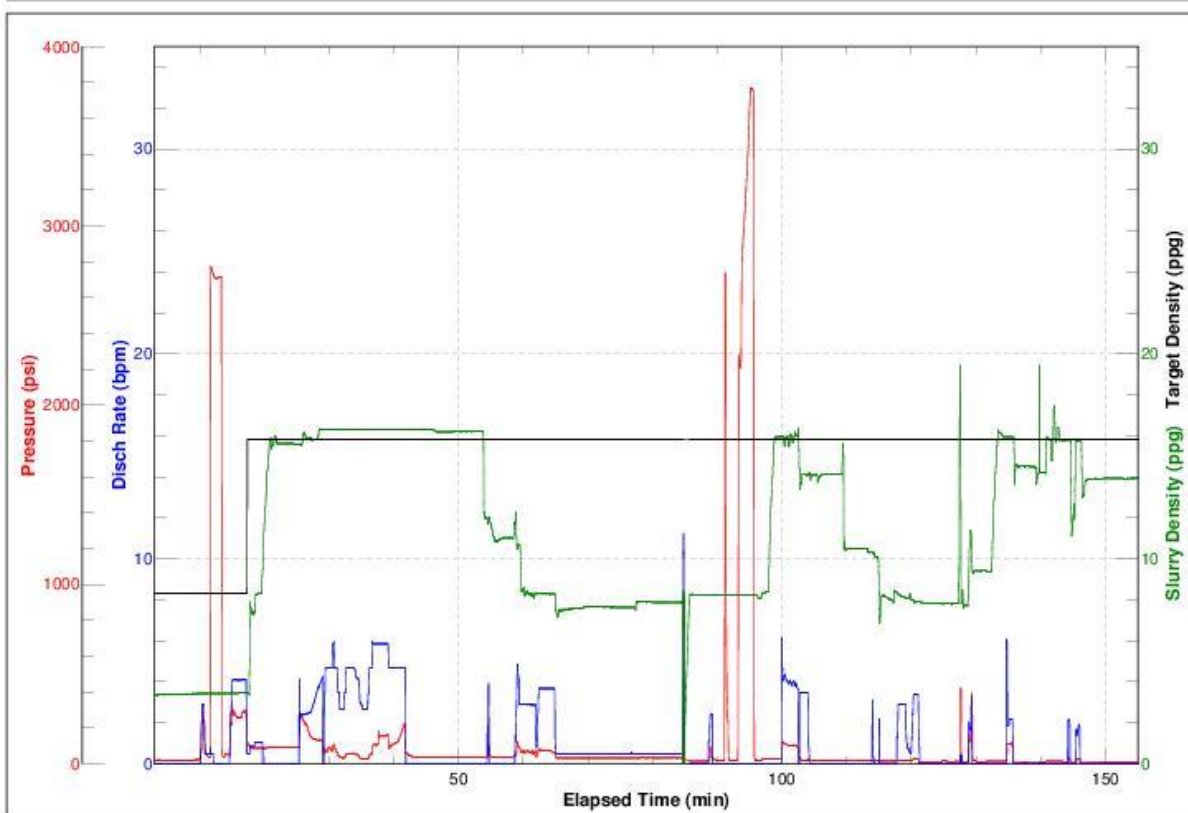
| Line | Event | Date (MM/DD/YY) | Time (HH:MM) | Density (lb/gal) | Pump Rate (bpm) | Pump Volume (bbls) | Pipe Pressure (psi) | Comment |
|------|----------------------|--------------------|-----------------|---------------------|-----------------------|--------------------------|---------------------------|--|
| 1 | Callout | 10/26/2017 | 21:00 | 0 | 0 | 0 | 0 | Crew called into yard at 2100 for on location of ASAP |
| 2 | | 10/26/2017 | 22:20 | 0 | 0 | 0 | 0 | Leave yard |
| 3 | Arrive on Location | 10/27/2017 | 02:00 | 0 | 0 | 0 | 0 | Arrive on location |
| 4 | Spot Units | 10/27/2017 | 02:15 | 0 | 0 | 0 | 0 | Spot equipment |
| 5 | Safety Meeting | 10/27/2017 | 02:30 | 0 | 0 | 0 | 0 | Held STEACS meeting with crew |
| 6 | Rig up | 10/27/2017 | 02:24 | 0 | 0 | 0 | 0 | Rig up |
| 7 | Safety meeting | 10/27/2017 | 03:41 | 0 | 0 | 0 | 0 | Held STEACS meeting with company man and rig crew to discuss safety and job procedures of plug #1. |
| 8 | Start pumping | 10/27/2017 | 04:15 | 8.33 | 2.8 | 1.5 | 300 | Load lines |
| 9 | Pressure Test | 10/27/2017 | 04:17 | 8.33 | 0 | 0 | 2800 | Pressure test pumps and lines |
| 10 | Pump Spacer | 10/27/2017 | 04:20 | 8.33 | 4 | 10 | 275 | Pump fresh water spacer |
| 11 | Pumping Cement | 10/27/2017 | 04:25 | 15.8 | 2.4 | 12 | 226 | Batch, weight and pump cement @ 15.8ppg/ 60sks/ 1.15Y/ 4.96gps. Bottom of plug at 4614', Top of plug at 4411'. |
| 12 | Pump Displacement | 10/27/2017 | 04:35 | 9.2 | 5 | 48 | 395 | Pump mud displacement 9.2# |
| 13 | Other (See Comments) | 10/27/2017 | 04:45 | 0 | 0 | 0 | 0 | Shut down to balance plug |
| 14 | Clean Pumps & Lines | 10/27/2017 | 05:00 | 0 | 0 | 0 | 0 | Cleaned pump and lines to pit |
| 15 | 3rd Party Other | 10/27/2017 | 06:00 | 0 | 0 | 0 | 0 | Waiting on rig to pull pipe |
| 16 | Safety Meeting | 10/27/2017 | 12:08 | 0 | 0 | 0 | 0 | Held STEACS meeting with company man and rig crew to discuss safety and job procedures of plug #2 & #3. |
| 17 | Start Pumping | 10/27/2017 | 12:16 | 8.33 | 2.3 | 1 | 40 | Load lines and well for plug #2 |
| 18 | Pressure Test | 10/27/2017 | 12:20 | 0 | 0 | 0 | 3550 | Pressure test pumps and lines |
| 19 | Pumping Cement | 10/27/2017 | 12:24 | 15.8 | 3.4 | 10 | 0 | Batch, weight and pump cement @ 15.8ppg/ 50sks/ 1.15Y/ 4.96gps. Bottom of plug at 488', Top of plug at 324'. |
| 20 | Pump Displacement | 10/27/2017 | 12:30 | 8.33 | 3.4 | 3 | 0 | Pump fresh water displacement |
| 21 | Other (See Comments) | 10/27/2017 | 12:32 | 0 | 0 | 0 | 0 | Shut down to balance plug |
| 22 | 3rd Party Other | 10/27/2017 | 12:36 | 0 | 0 | 0 | 0 | Waiting on rig to pull pipe |
| 23 | Rig Up | 10/27/2017 | 13:10 | 0 | 0 | 0 | 0 | Rig up to drill pipe |
| 24 | Start pumping | 10/27/2017 | 13:26 | 8.33 | 3.4 | 1 | 24 | Load lines and well for plug #3 |

| | | | | | | | | |
|----|------------------------|------------|-------|------|-----|---|-----|---|
| 25 | Pumping Cement | 10/27/2017 | 13:40 | 15.8 | 2 | 3 | 108 | Batch, weight and pump cement @ 15.8ppg/ 25sks/ 1.15Y/4.96gps. Bottom of plug at 61', top of plug at surface. |
| 26 | Cement Back to Surface | 10/27/2017 | 13:44 | 0 | 0 | 0 | 0 | Shut down, rig down from pipe to pull drill pipe and rat and mouse hole to fill with cement. |
| 27 | Pumping Cement | 10/27/2017 | 13:58 | 15.8 | 0.8 | 1 | 0 | Pump cement into rat and mouse holes to surface. |
| 28 | End Pumping | 10/27/2017 | 14:00 | 0 | 0 | 0 | 0 | Shut down and rig up to wash up. |
| 29 | Clean Pumps & Lines | 10/27/2017 | 14:03 | 0 | 0 | 0 | 0 | Clean pump and lines to pit. |
| 30 | Safety Meeting | 10/27/2017 | 14:40 | 0 | 0 | 0 | 0 | Held rig down safety meeting with crew. |
| 31 | Rig Down | 10/27/2017 | 14:45 | 0 | 0 | 0 | 0 | Rig down pump and lines. |
| 32 | Leave Location | 10/27/2017 | 15:30 | 0 | 0 | 0 | 0 | Leave location. |

3 Pump Diagrams



JobMaster Program Version 4.02C1
 Job Number: 1579
 Customer: St. Croix
 Well Name: Clover-Schenk 1



BJ Services

Job Start: Friday, October 27, 2017