

HALLIBURTON

iCem® Service

NOBLE ENERGY INC E-BUSINESS

For: Pete Burns

Date: Tuesday, October 03, 2017

NOBLE KAMMERZELL 6-8F

Case 1

Job Date: Tuesday, October 03, 2017

Sincerely,

Brad Hinkle and Crew

1.0 Job Design

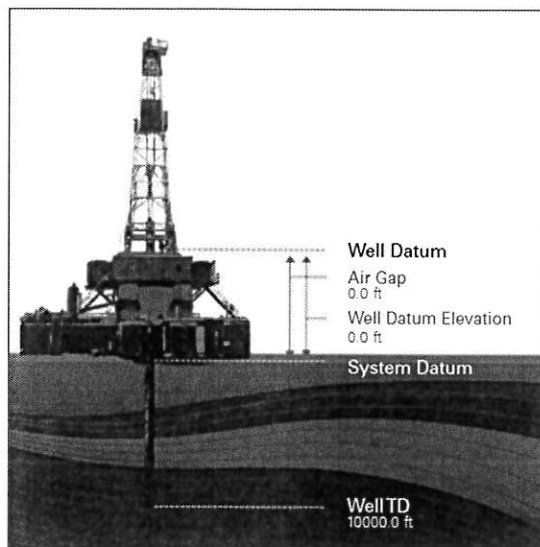
1.1 Overview

Job Type	Primary Cement Job
----------	--------------------

Injection Path	Casing/Conventional
----------------	---------------------

Foam Job	No
----------	----

Well Snapshot



Simulations Performed

1.2 Pressure Schedule Inputs

Pressure Mode	Conventional
---------------	--------------

1.3 Pressure Schedule Table

Start (Pump Volume in bbl)	End (Pump Volume in bbl)	Pressure (psi)
0.00	End	0.00

1.4 Time of Stages

Graph Label	Time (min)	Stage Starts Pumping	Stage Enters Annulus
①	0.0	End Job	
②	0.0	Pump Cement	
③	0.0	Depart Location for Service Center or Other Site	
④	0.0	Pre-Rig Down Safety Meeting	

2.0 Real-Time Job Summary

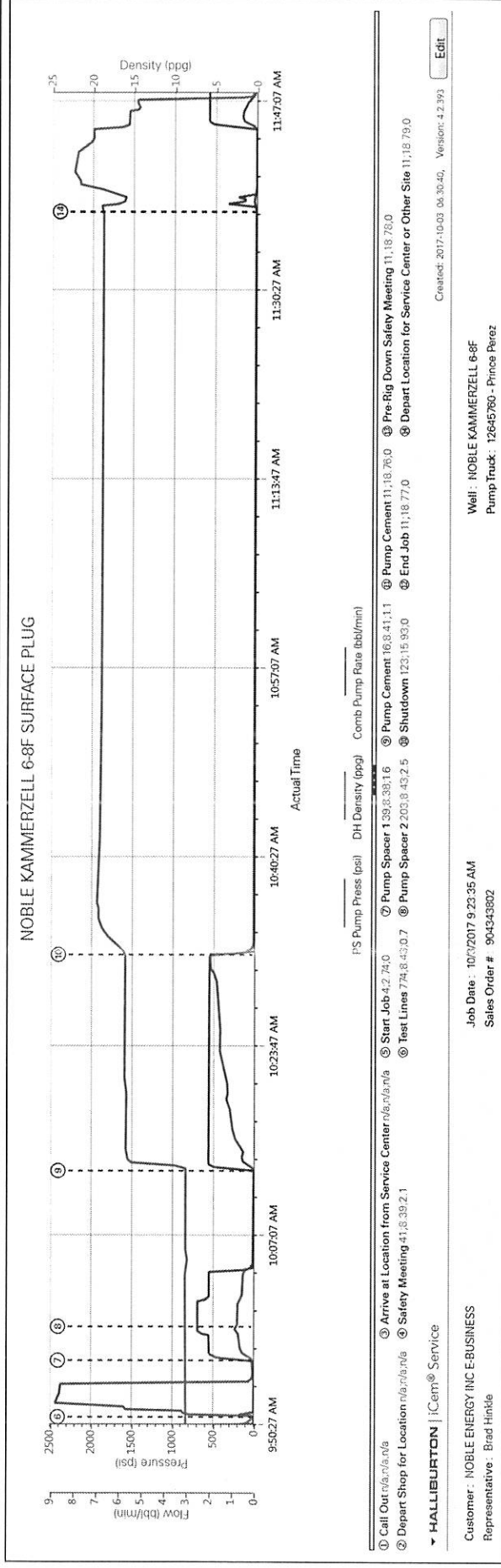
2.1 Job Event Log

Type	Seq. No.	Activity	Graph Label	Date	Time	Source	Pass-Side Pump Pressure (psi)	Downhole Density (ppg)	Combined Pump Rate (bbl/min)	Comments
Event	1	Call Out	Call Out	10/3/2017	04:00:00	USER				Crew called for an on location of 0800. Crew was Bradley Hinkle, Prince Perez, Luis Ramirez and Steve Dunham.
Event	2	Depart Shop for Location	Depart Shop for Location	10/3/2017	07:15:00	USER				Pre-journey safety meeting.
Event	3	Arrive at Location from Service Center	Arrive at Location from Service Center	10/3/2017	08:00:00	USER				Perform a site assessment and pre-rig up safety meeting. Location was muddy so customer recommended we rig up of service road just off edge of location.
Event	4	Safety Meeting	Safety Meeting	10/3/2017	09:35:00	USER	41.00	8.39	2.10	Pre-job safety meeting with all personnel on location.
Event	5	Start Job	Start Job	10/3/2017	09:49:07	COM4	4.00	2.74	0.00	
Event	6	Test Lines	Test Lines	10/3/2017	09:51:19	USER	774.00	8.43	0.70	Pressure test lines with a 500 PSI electronic kick-out test.
Event	7	Pump Spacer 1	Pump Spacer 1	10/3/2017	09:56:18	COM4	39.00	8.38	1.60	Pump 5 bbls fresh water to establish good circulation.
Event	8	Pump Spacer 2	Pump Spacer 2	10/3/2017	09:59:17	COM4	203.00	8.43	2.50	Pump 10 bbls mud flush.
Event	9	Pump Cement	Pump Cement	10/3/2017	10:13:00	COM4	16.00	8.41	1.10	Pump 31.5 bbls (147 sacks) G-Cement with Gas Check mixed at 15.8 ppg. Density verified by pressurized scales.

Event	10	Shutdown	Shutdown	10/3/2017	10:32:02	USER	123.00	15.93	0.00	Shutdown when good cement seen at returns tank. Allowed rig crew to pull tubing, break down floor and BOP before topping off well.
Event	11	Pump Cement	Pump Cement	10/3/2017	11:37:32	USER	11.00	18.76	0.00	Pump 1 bbl (5 sacks) G-Cement with Gas Check mixed at 15.8 ppg until at surface. Waited for 5 minutes to verify cement wasn't falling back.
Event	12	End Job	End Job	10/3/2017	11:37:33	USER	11.00	18.77	0.00	
Event	13	Pre-Rig Down Safety Meeting	Pre-Rig Down Safety Meeting	10/3/2017	11:37:34	USER	11.00	18.78	0.00	Pre-rig down safety meeting.
Event	14	Depart Location for Service Center or Other Site	Depart Location for Service Center or Other Site	10/3/2017	11:37:35	USER	11.00	18.79	0.00	Pre-journey safety meeting for next location.

3.0 Attachments

3.1 NOBLE KAMMERZELL 6-8F SURFACE PLUG.png



Stephanie Dionne

From: Jenkins - DNR, Steve <steve.jenkins@state.co.us>
Sent: Thursday, October 05, 2017 8:19 AM
To: Stephanie Dionne
Subject: EXTERNAL: Re: Form 6 NOI Extensions

Yes, you are good to go.

On Thu, Oct 5, 2017 at 8:12 AM, Stephanie Dionne <Stephanie.Dionne@nblenergy.com> wrote:

I like how you think. Are we good to extend to 12/31/17?

Thanks so much!

From: Jenkins - DNR, Steve [mailto:steve.jenkins@state.co.us]
Sent: Thursday, October 05, 2017 8:11 AM
To: Stephanie Dionne <Stephanie.Dionne@nblenergy.com>
Subject: EXTERNAL: Re: Form 6 NOI Extensions

Stephanie:

Lets just go plug them and we will catch up on the changes when you submit the Subsequent, less paperwork for everyone involved.

Steve

On Wed, Oct 4, 2017 at 3:22 PM, Stephanie Dionne <Stephanie.Dionne@nblenergy.com> wrote:

Hey Steve,

I have two Form 6 NOIs that were approved in 2016 and have been expired a while. Both have already been extended, but I'm not sure why we couldn't get to them. We now have them on our schedule for November. Do you want to extend the expiration again, or should I resubmit them? If you re-extend them, could we have a Dec. 31, 2017 expiration? We have made some changes to the procedures due to the shift in our plugging process that happened this past spring. I have attached the updated proposed wellbore diagrams.

Stinar C13-31 – AFE 123-30939, Doc 401109988. We already received an extension. I am not sure why we weren't able to get to it in the spring, but we have it on the schedule for November.