

Extraction Oil & Gas
Project: Weld County, CO (NAD83)
Site: MLD Pad
Well: MLD 4
Wellbore: Wellbore #1
Plan: Plan #2 (MLD 4/Wellbore #1)
P 346

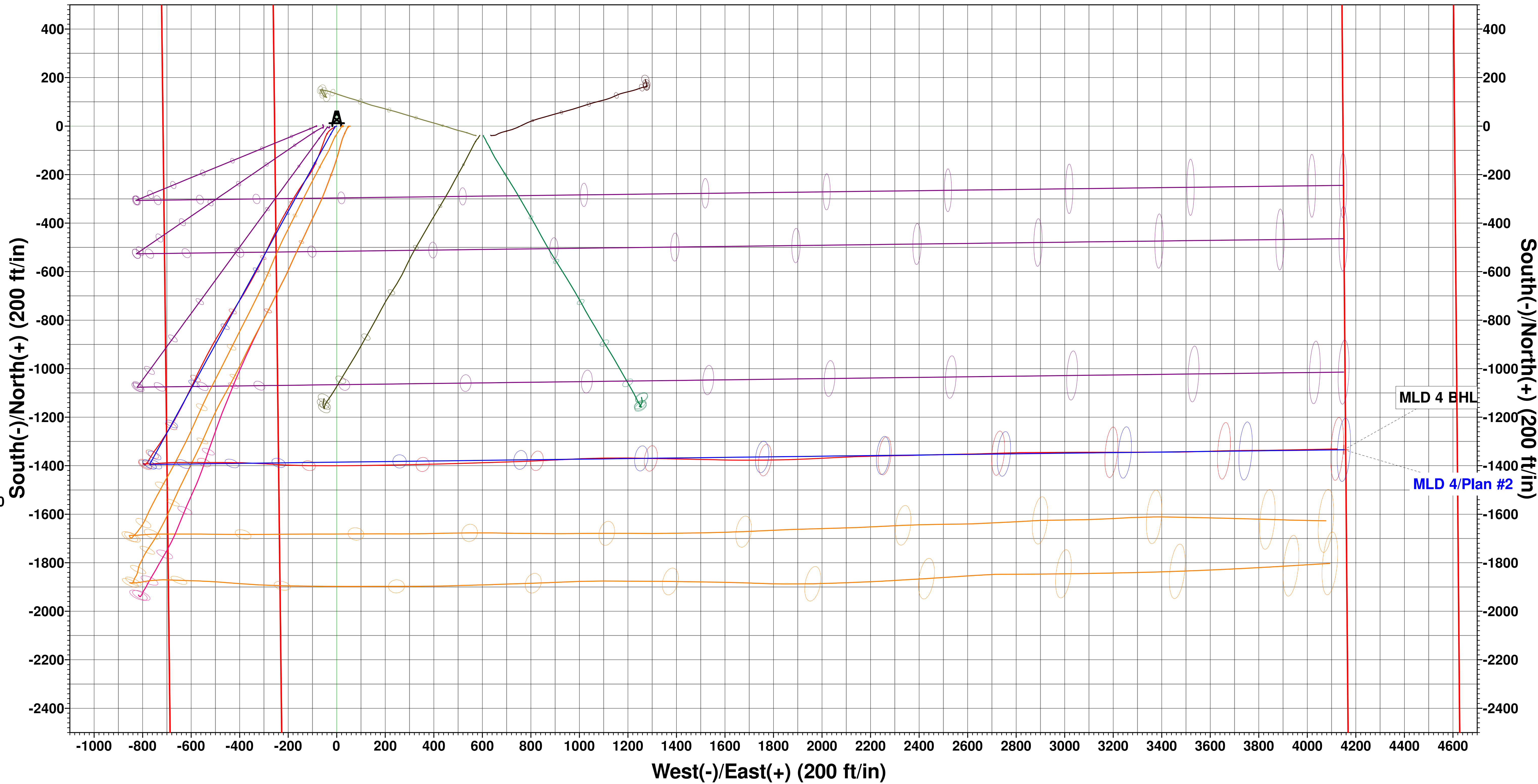
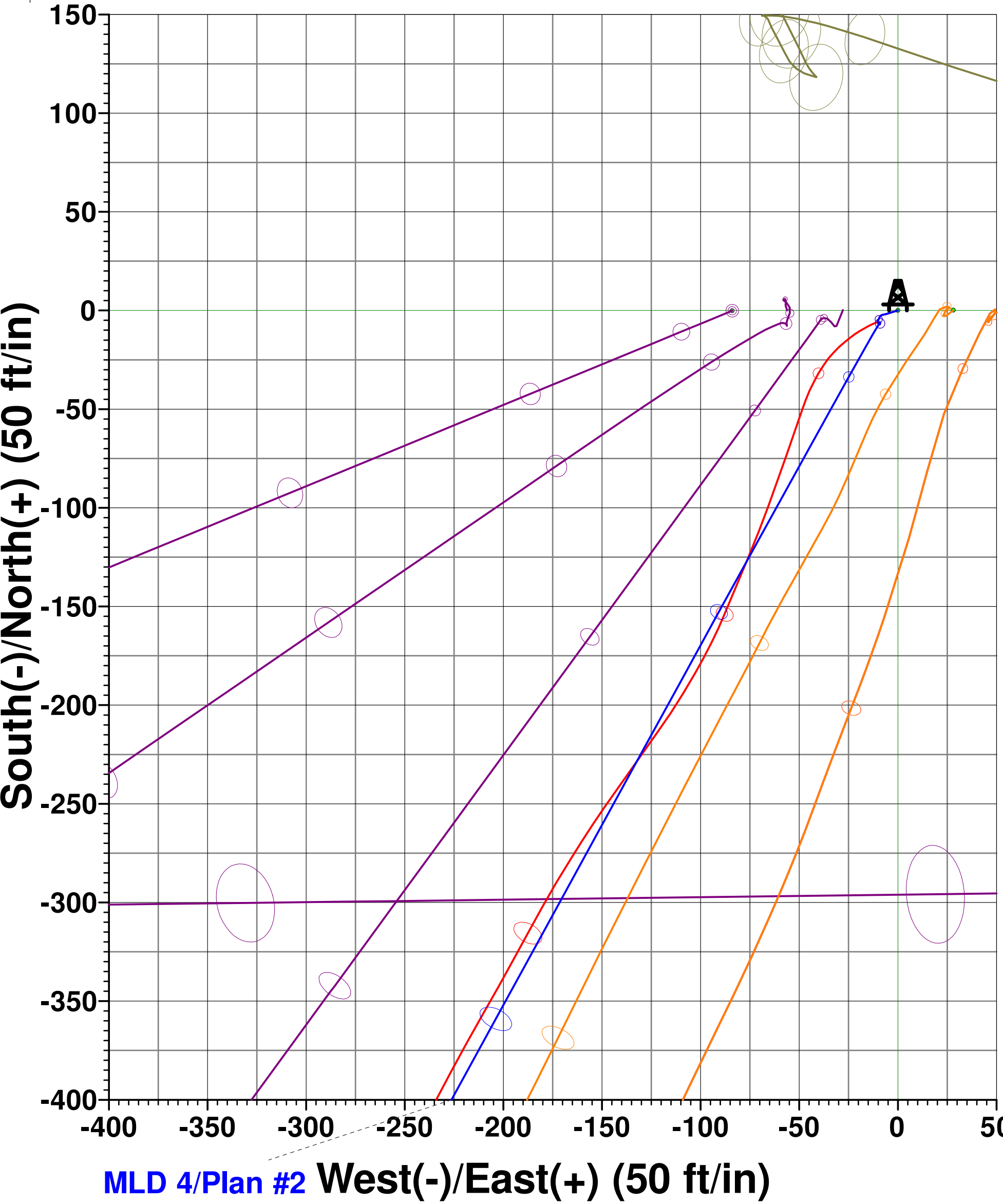
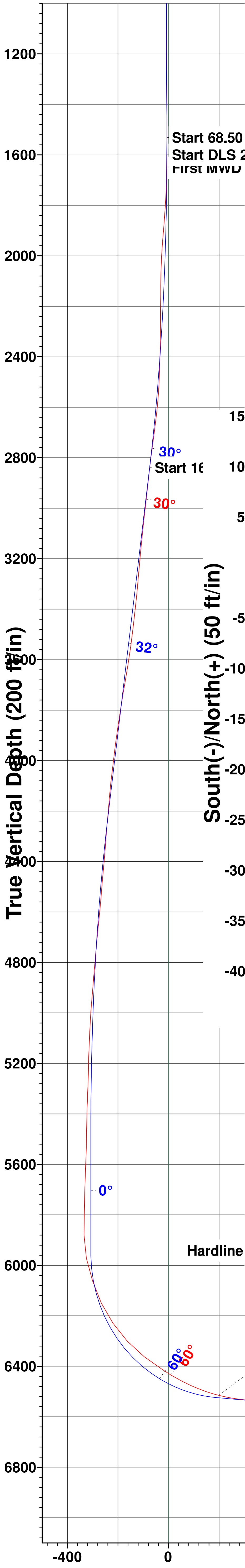
WELL DETAILS: MLD 4
Ground Elevation:: 4876.00
RKB Elevation: KB=25' @ 4901.00ft (P 346)
Rig Name: P 346



Northing	Easting	Latitude	Longitude
1353975.9800	3140493.1100	40.303969	-104.996266

Planned Section Details

Sec	MD	Inc	Azi	TVD	+N/-S	+E/-W	Dleg	TFace	VSect
1	1531.50	0.44	12.72	1531.40	-6.55	-9.00	0.00	0.00	-6.57
2	1600.00	0.44	12.72	1599.90	-6.03	-8.89	0.00	0.00	-6.62
3	2906.90	32.25	208.71	2839.76	-315.38	-179.94	2.50	-164.20	-74.80
4	4550.72	32.25	208.71	4230.00	-1084.70	-601.30	0.00	0.00	-240.52
5	5840.69	0.00	0.00	5452.93	-1394.78	-771.13	2.50	180.00	-307.32
6	6340.93	0.00	0.00	5953.17	-1394.78	-771.13	0.00	0.00	-307.32
7	7191.56	85.06	89.29	6524.00	-1388.33	-247.53	10.00	89.29	189.19
8	11606.31	85.06	89.29	6904.00	-1334.10	4150.50	0.00	0.00	4359.64



Vertical Section at 107.82° (200 ft/in)

MLD 4/Plan #2 MLD 4/Wellbore #1

T

G

M

A

Z

i

m

u

t

s

t

o

g

r

i

d

N

o

r

t

h

True North: -0.33°

Magnetic North: 8.28°

Magnetic Field

Strength: 52219.0snT

Dip Angle: 66.68°

Date: 8/15/2017

Model: HDGM

PROJECT DETAILS: Weld County, CO (NAD83)
Geodetic System: US State Plane 1983
Datum: North American Datum 1983
Ellipsoid: GRS 1980
Zone: Colorado Northern Zone
System Datum: Ground Level
Local North: Grid