

OPERATOR: **Extraction Oil & Gas**

WELL NAME: **MLD 9**

FIELD NAME: DJ Basin - Wattenberg

DRILLING RIG: Patterson 346

API #: 05-123-44810

LAT/LONG: 40.303971, -104.996668

SURFACE HOLE: NWNW S22-T4N-R68W, 802' FNL, 604' FWL

BOTTOM HOLE: S22-T4N-R68W, 570' FNL, 460' FEL



Earth Science Agency, LLC

COUNTY: Weld

STATE: Colorado

GROUND ELEVATION: 4876'

KELLY BUSHING: 4901'

DRILLING FLUID: OBM

TVD VS. MD: 6623' / 11172'

SPUD DATE: September 16, 2017

TD DATE: September 18, 2017

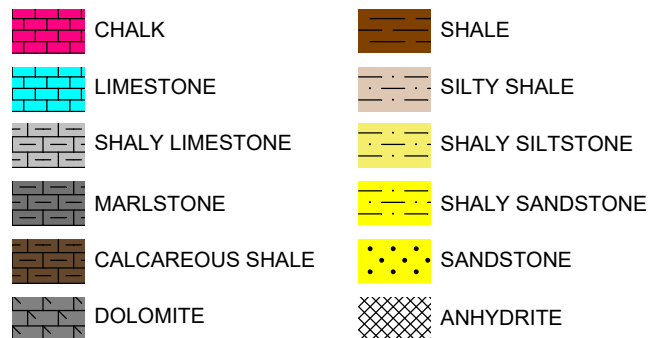
DEPTHS LOGGED: 5700' - 11172'

DATES LOGGED: September 16, 2017 - September 18, 2017

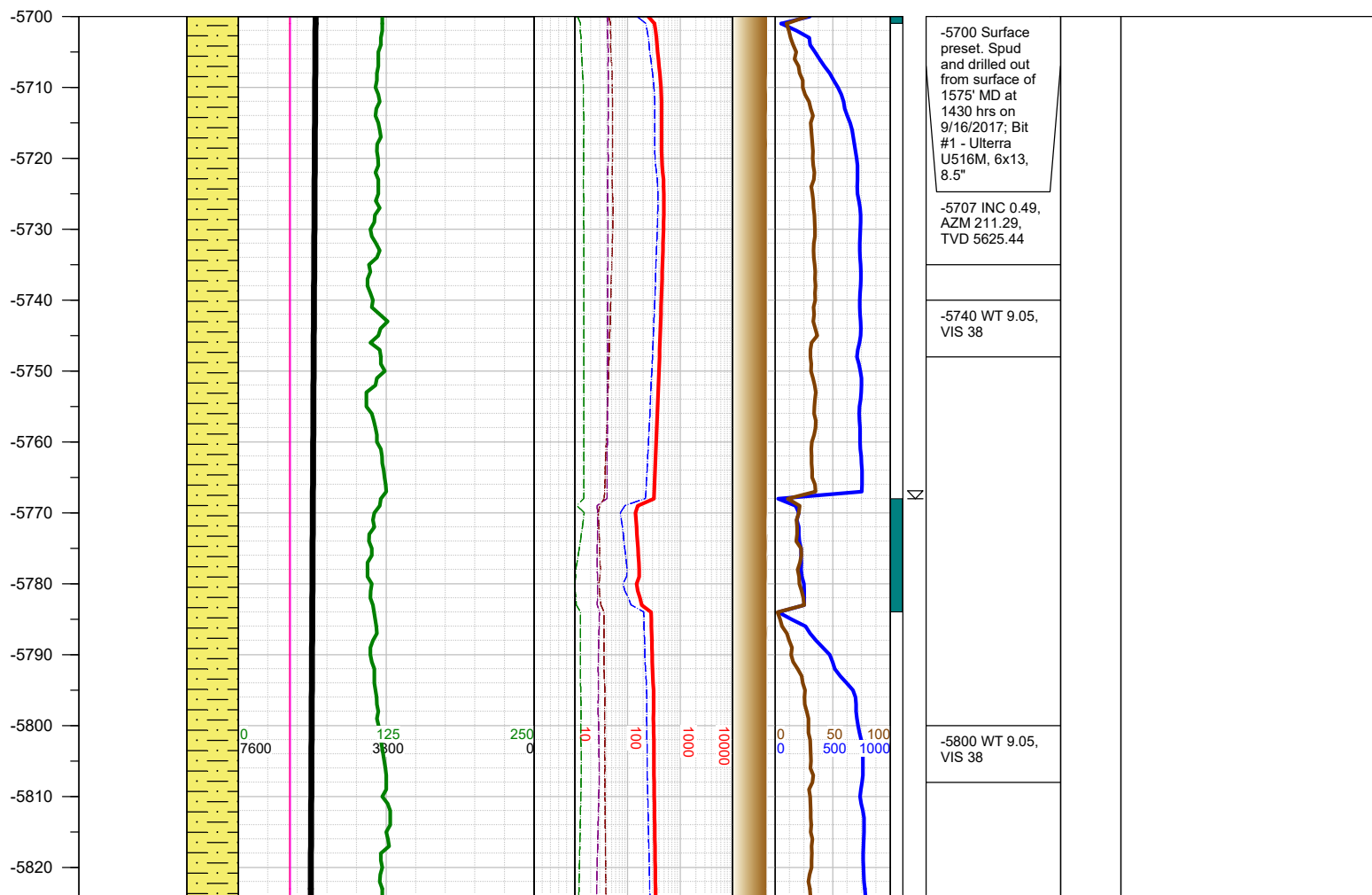
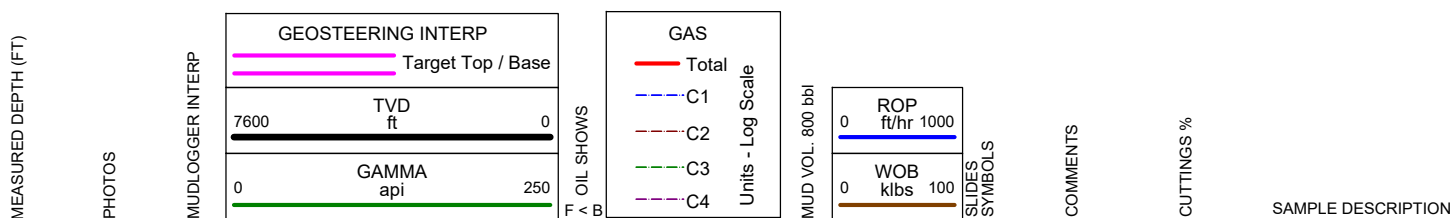
GEOLOGISTS: Scott Snoy, Ross Apodaca

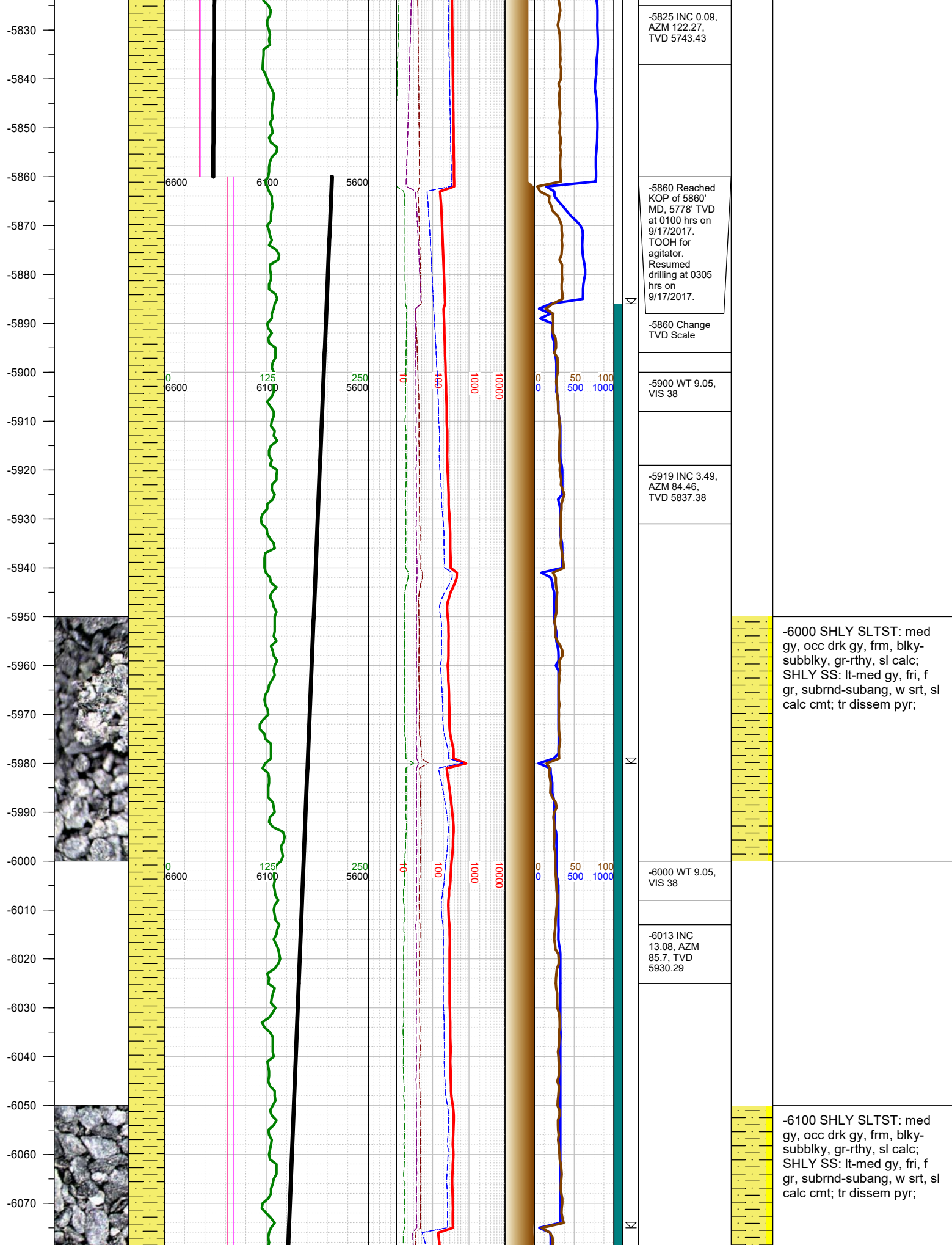
SCALE: 5" = 100'

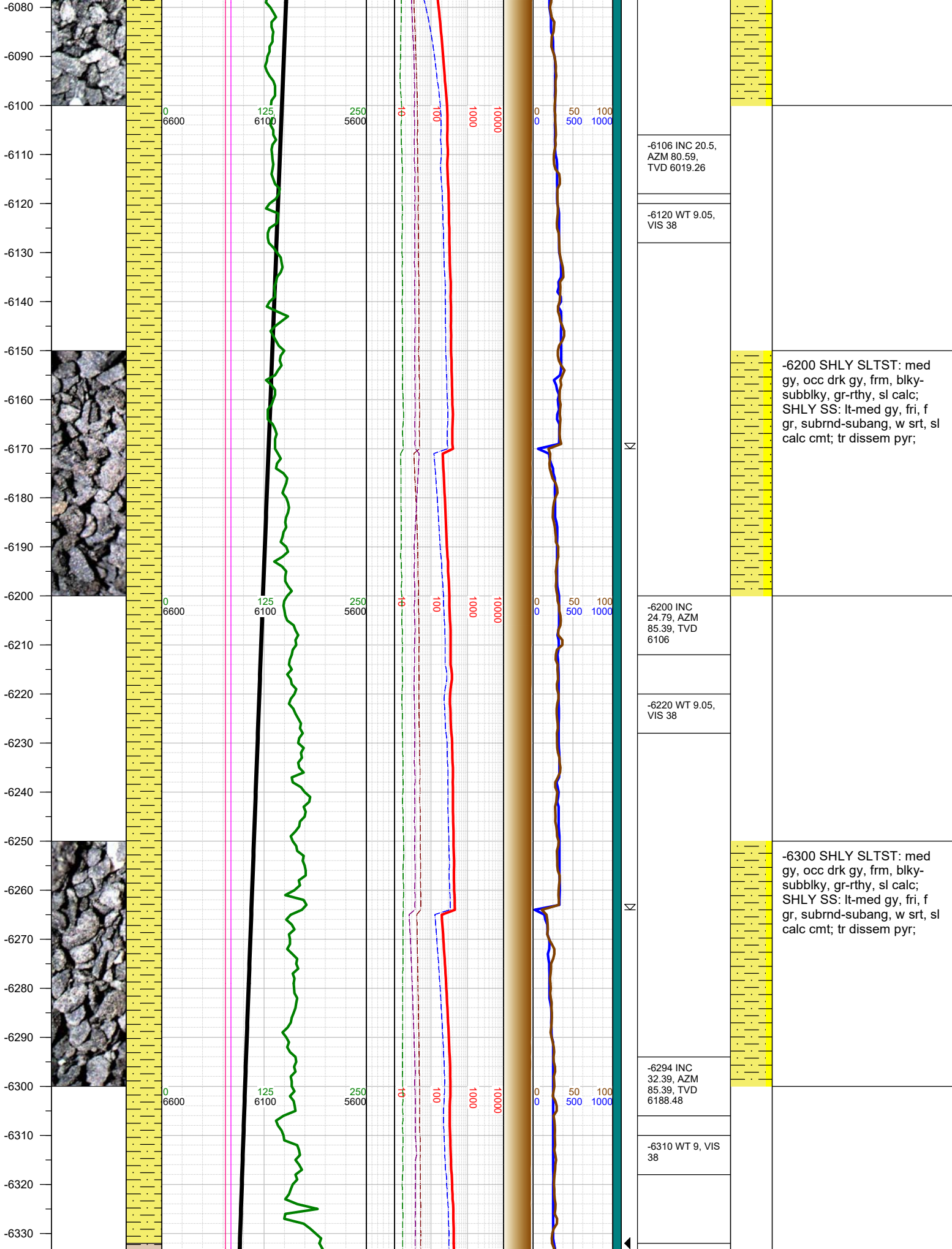
LEGEND

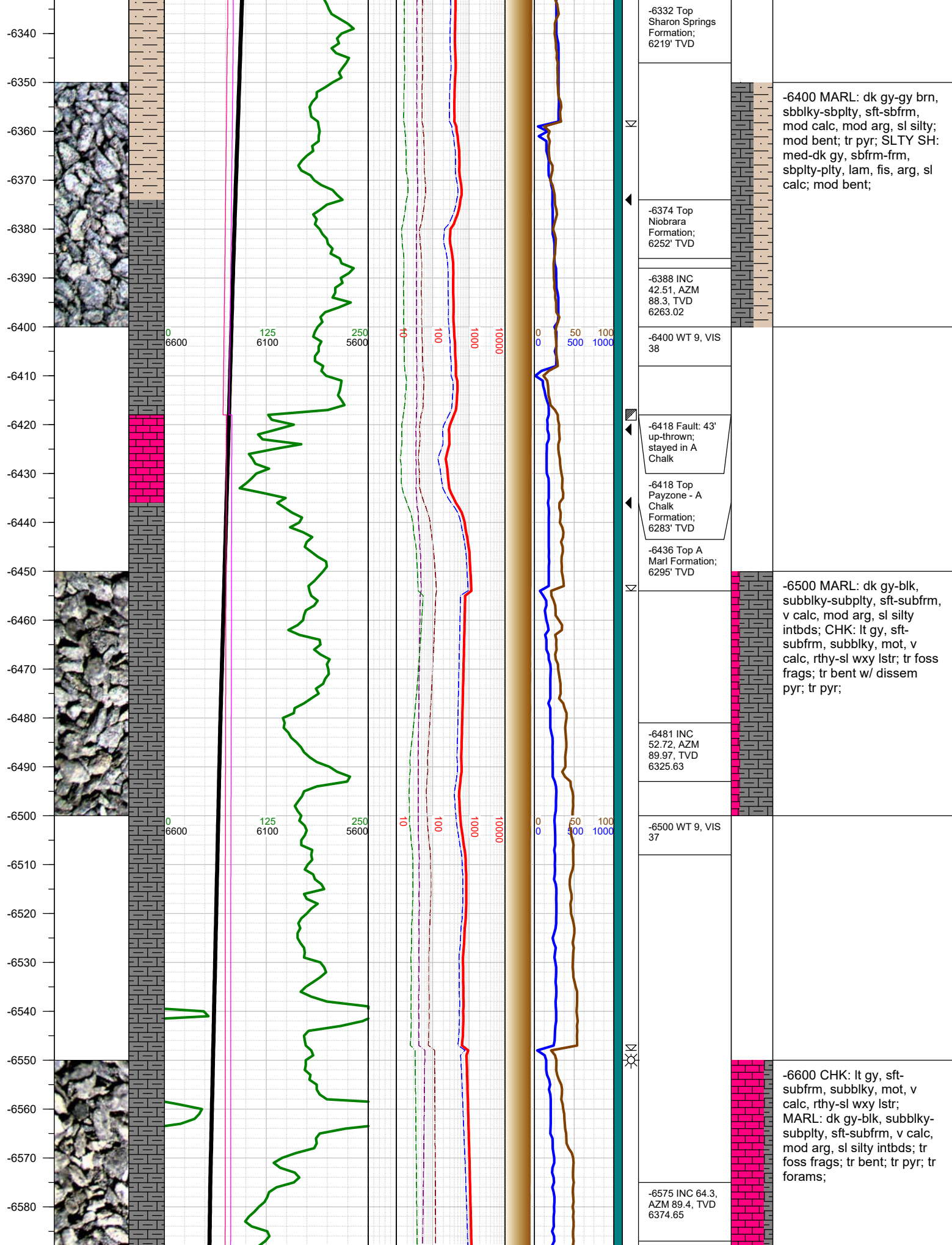


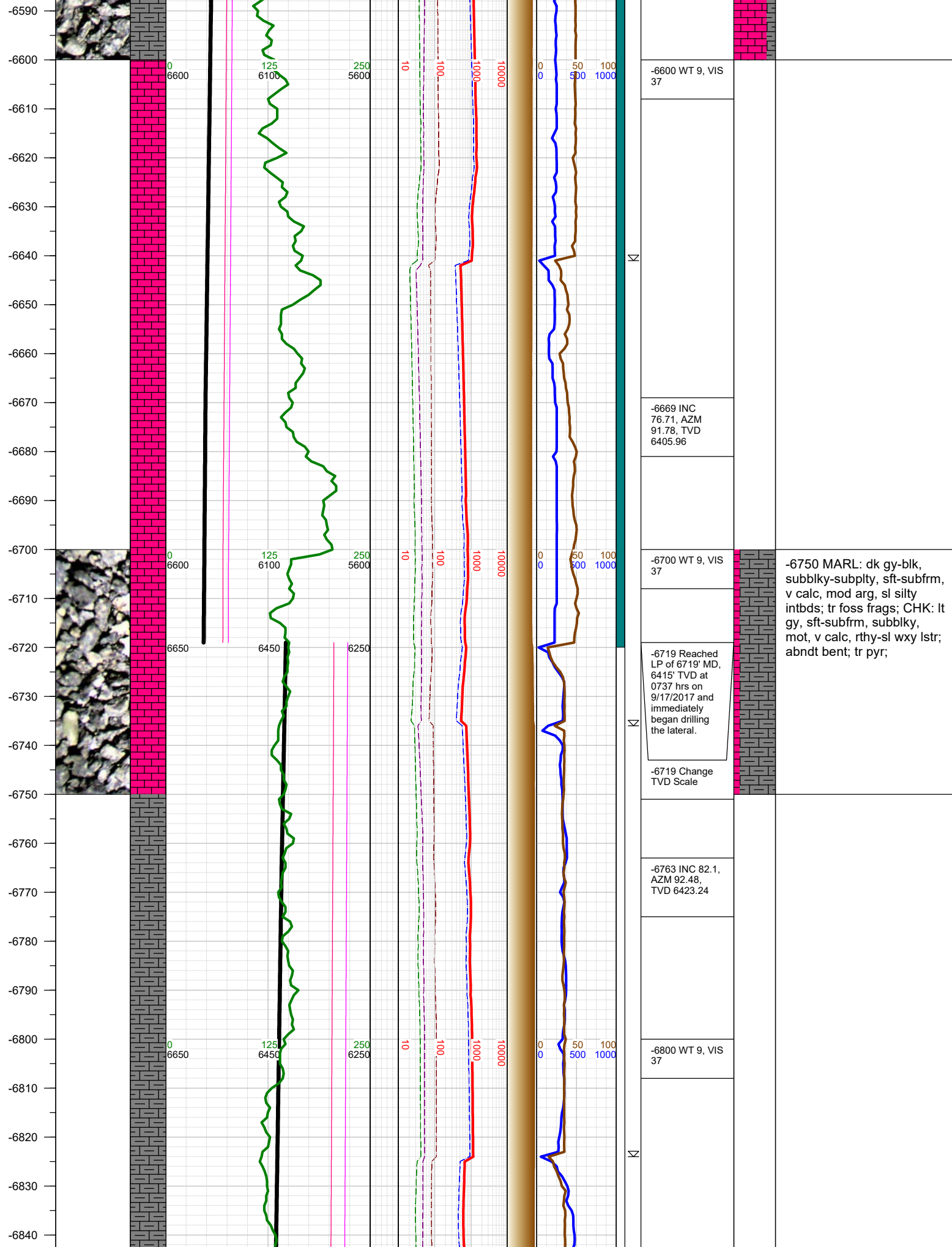
FORMATION \approx CONNECTION Δ MIDNIGHT NEW BIT GAS SHOW FAULT

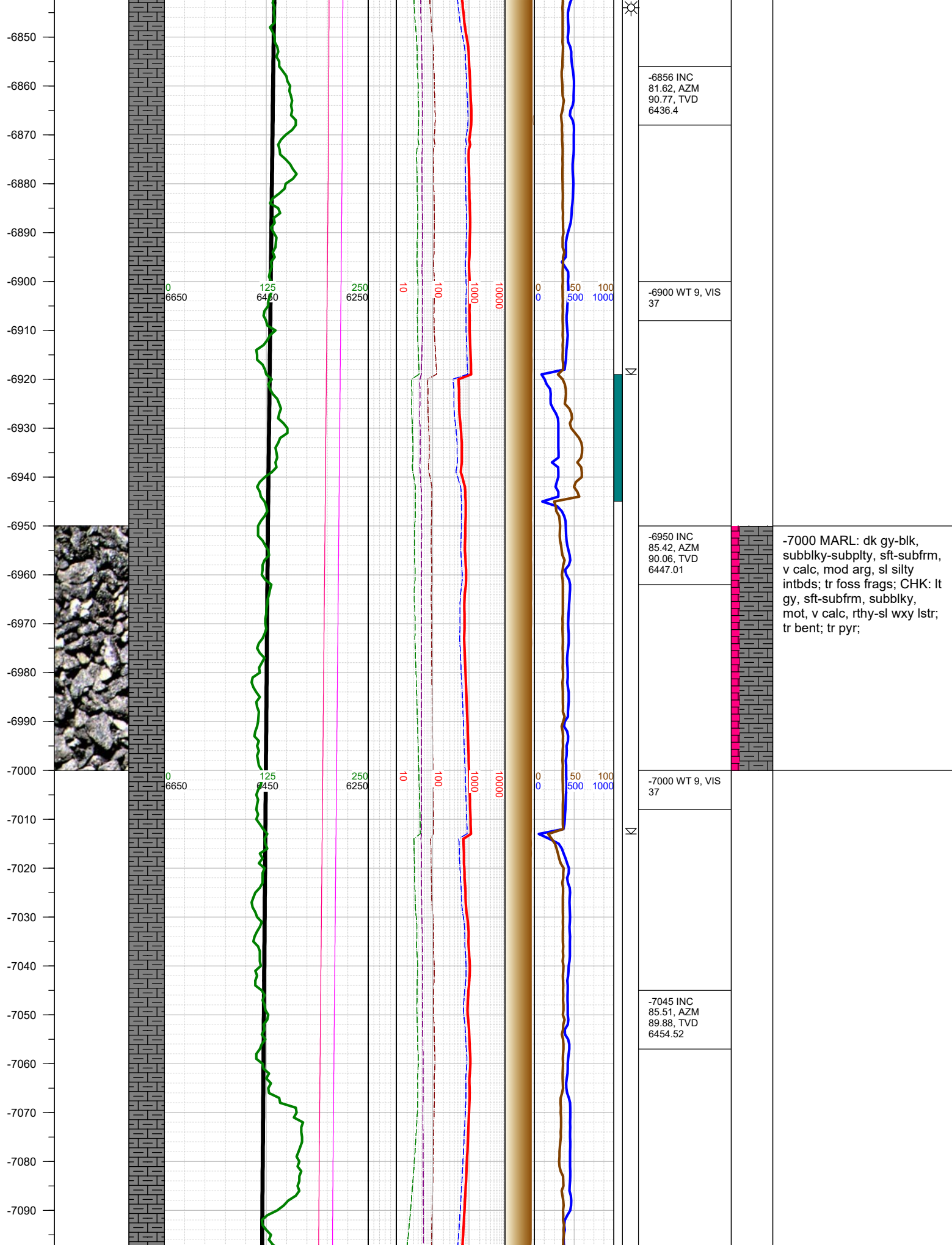


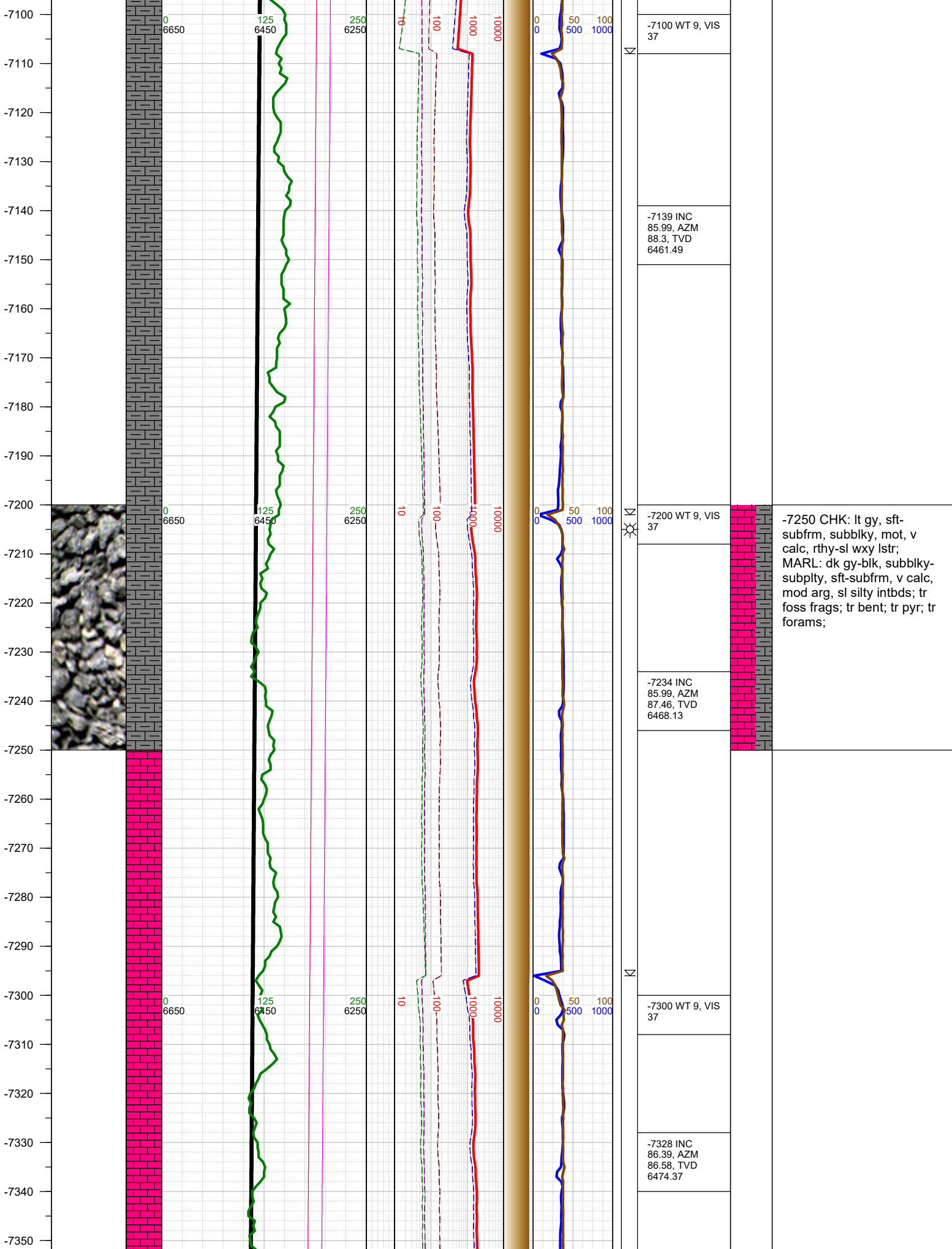


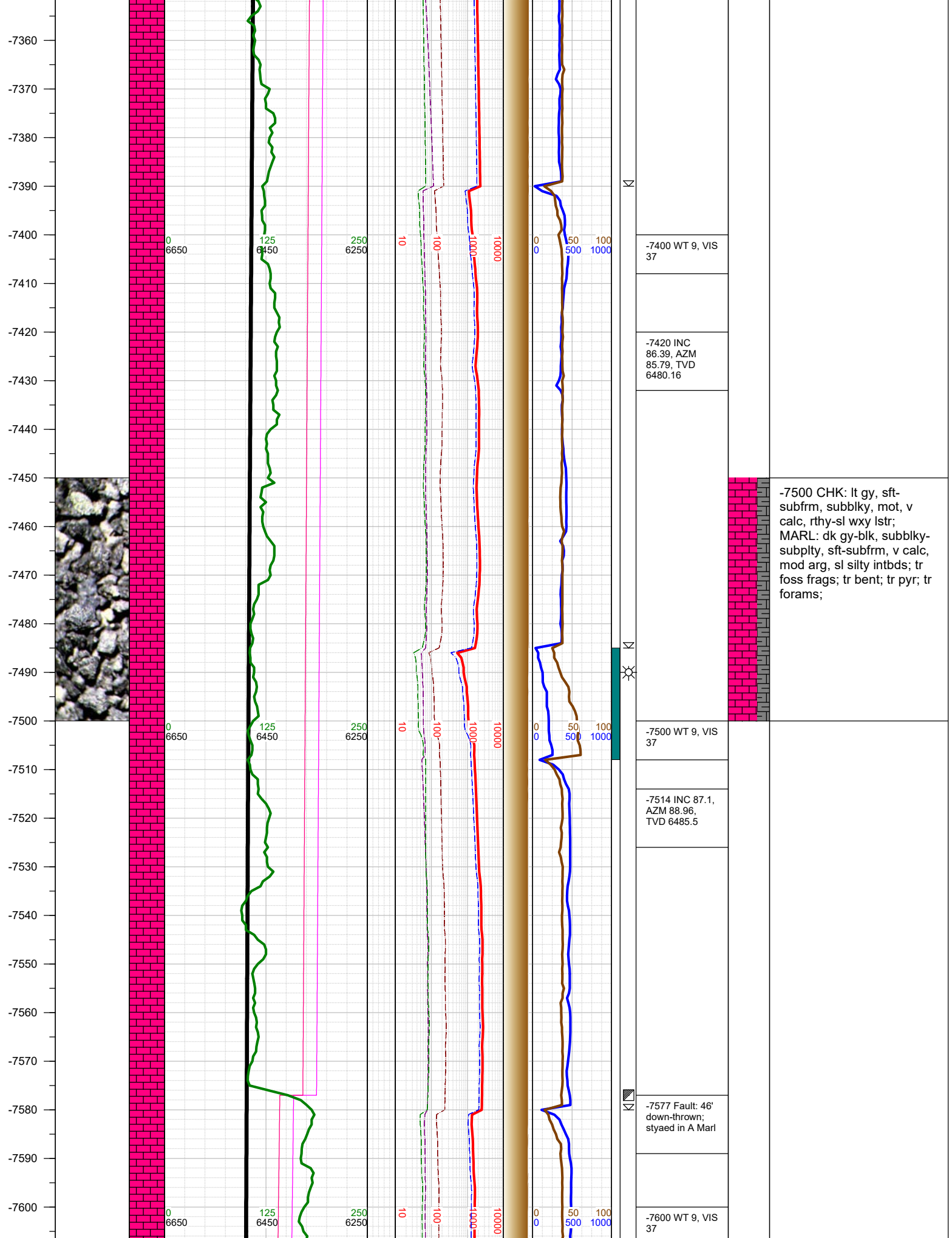




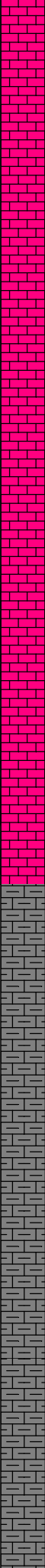








-7610
-7620
-7630
-7640
-7650
-7660
-7670
-7680
-7690
-7700
-7710
-7720
-7730
-7740
-7750
-7760
-7770
-7780
-7790
-7800
-7810
-7820
-7830
-7840
-7850
-7860



0
6650

125
6450

250
6250

10

100

1000

10000

0
0

50
500

100
1000



-7609 INC
88.11, AZM
88.96, TVD
6489.47

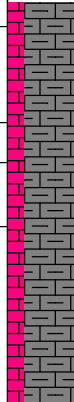
-7703 INC
86.79, AZM
90.06, TVD
6493.65

-7720 WT 9, VIS
37

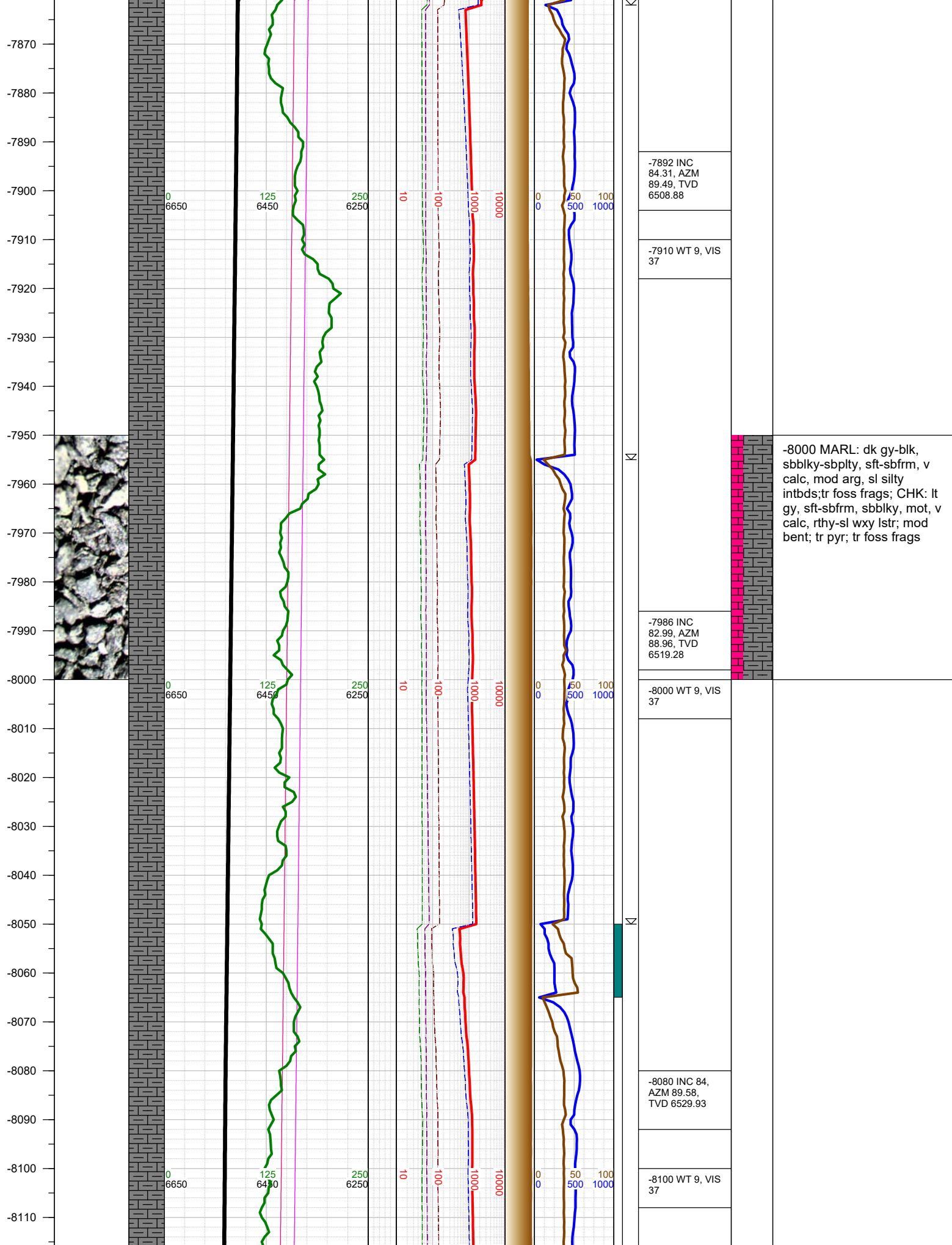
-7798 INC 85.2,
AZM 89.8, TVD
6500.29

-7810 WT 9, VIS
37

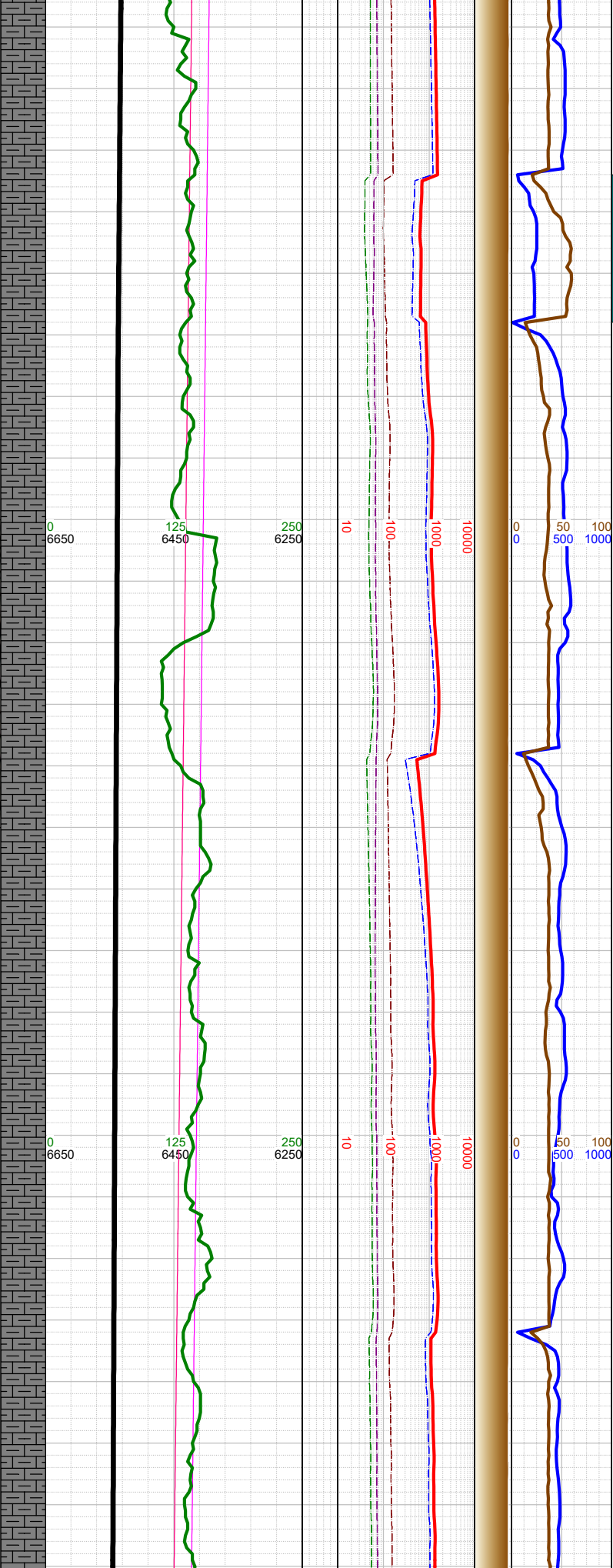
-7827 Fault: 60'
up-thrown,
drilled from A
Marl to B Marl



-7750 MARL: dk gy-blk,
subblky-subplty, sft-subfrm,
v calc, mod arg, sl silty
intbds; CHK: lt gy, sft-
subfrm, subblky, mot, v
calc, rthy-sl wxy lstr; tr foss
frags; tr bent w/ dissem
pyr;



-8120
-8130
-8140
-8150
-8160
-8170
-8180
-8190
-8200
-8210
-8220
-8230
-8240
-8250
-8260
-8270
-8280
-8290
-8300
-8310
-8320
-8330
-8340
-8350
-8360
-8370



Σ

-8174 INC
87.41, AZM
91.69, TVD
6536.97

-8200 WT 9, VIS
37

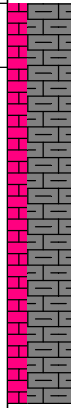
Σ

-8268 INC
87.58, AZM
90.9, TVD
6541.07

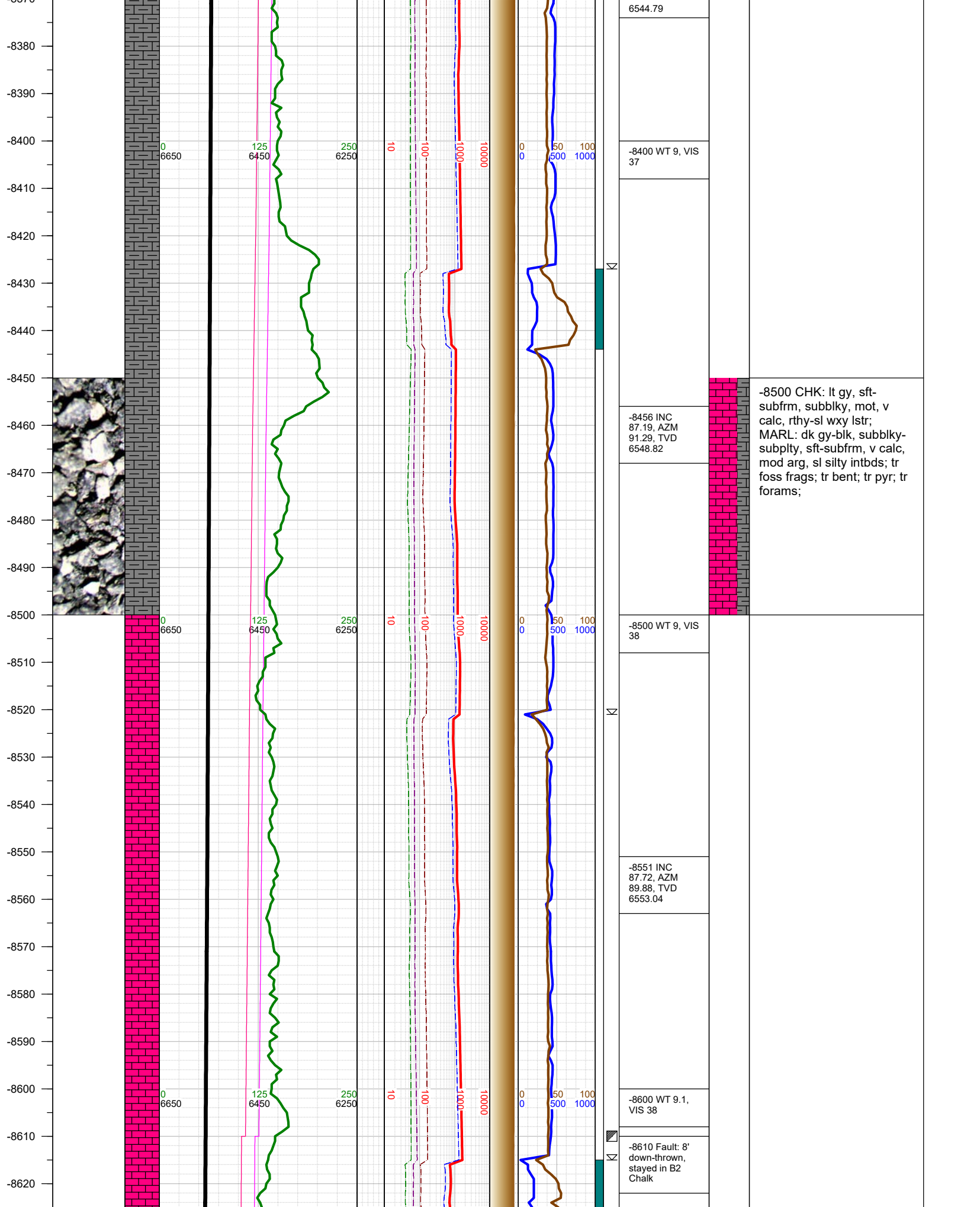
-8300 WT 9, VIS
37

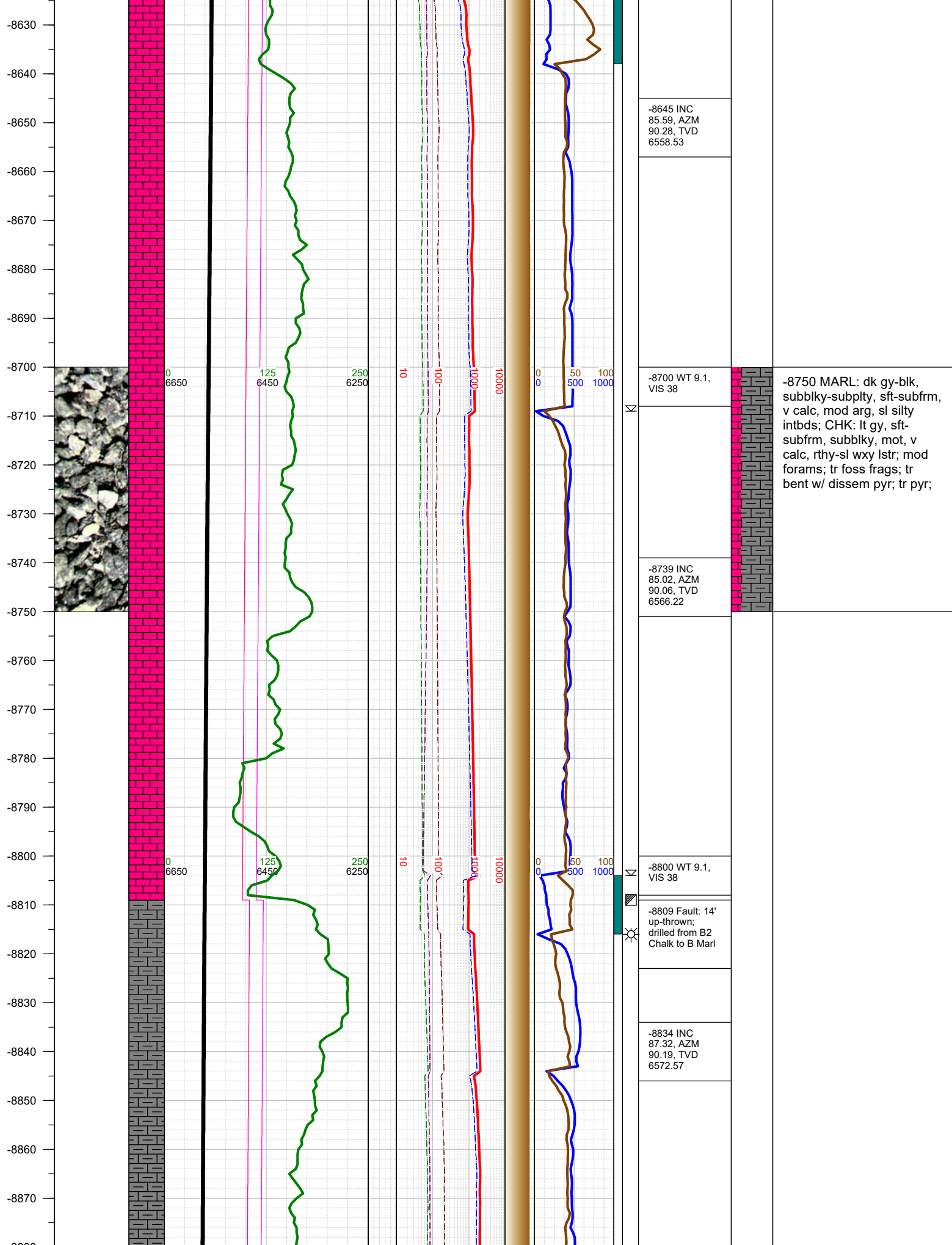
Σ

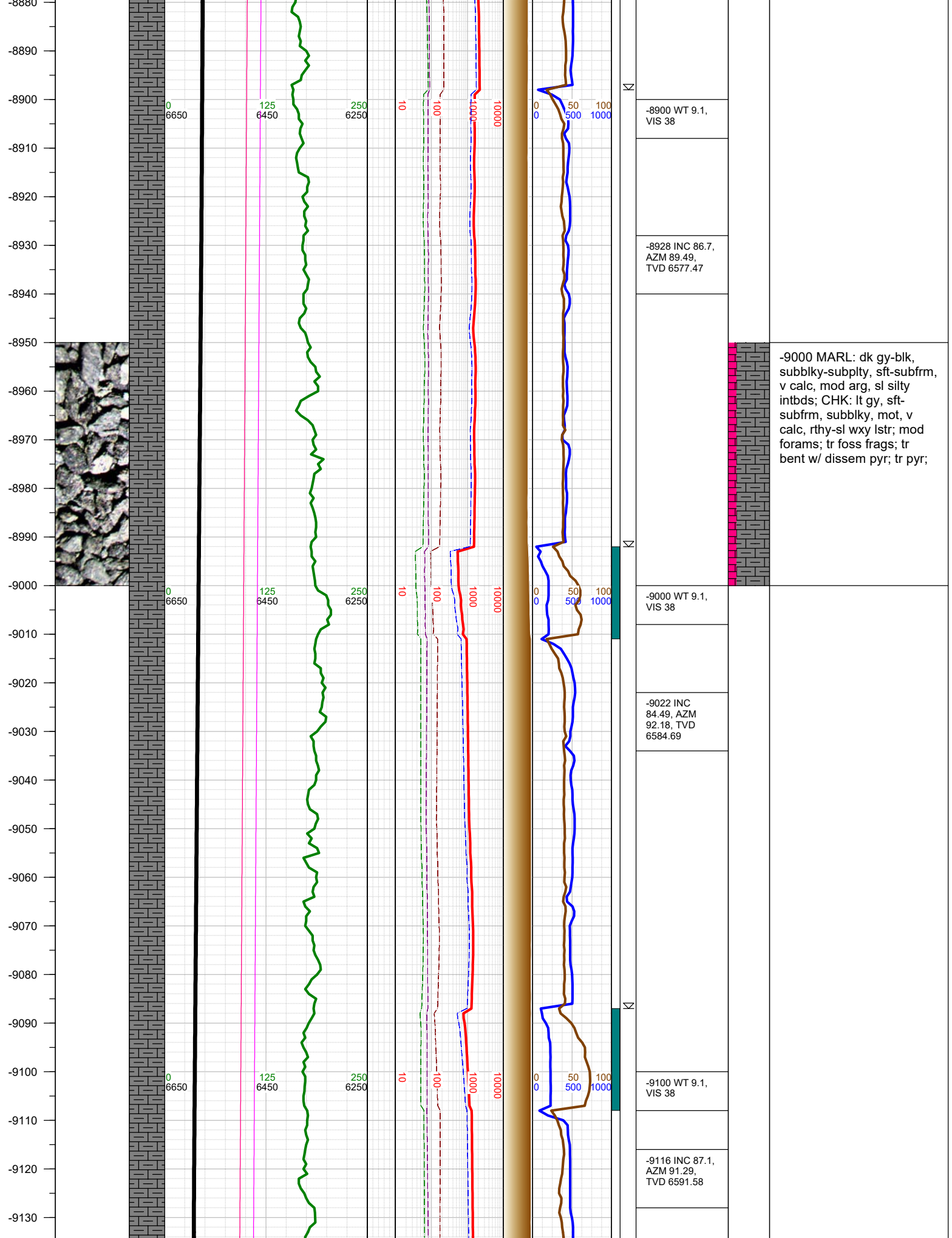
-8362 INC
87.89, AZM
89.8, TVD

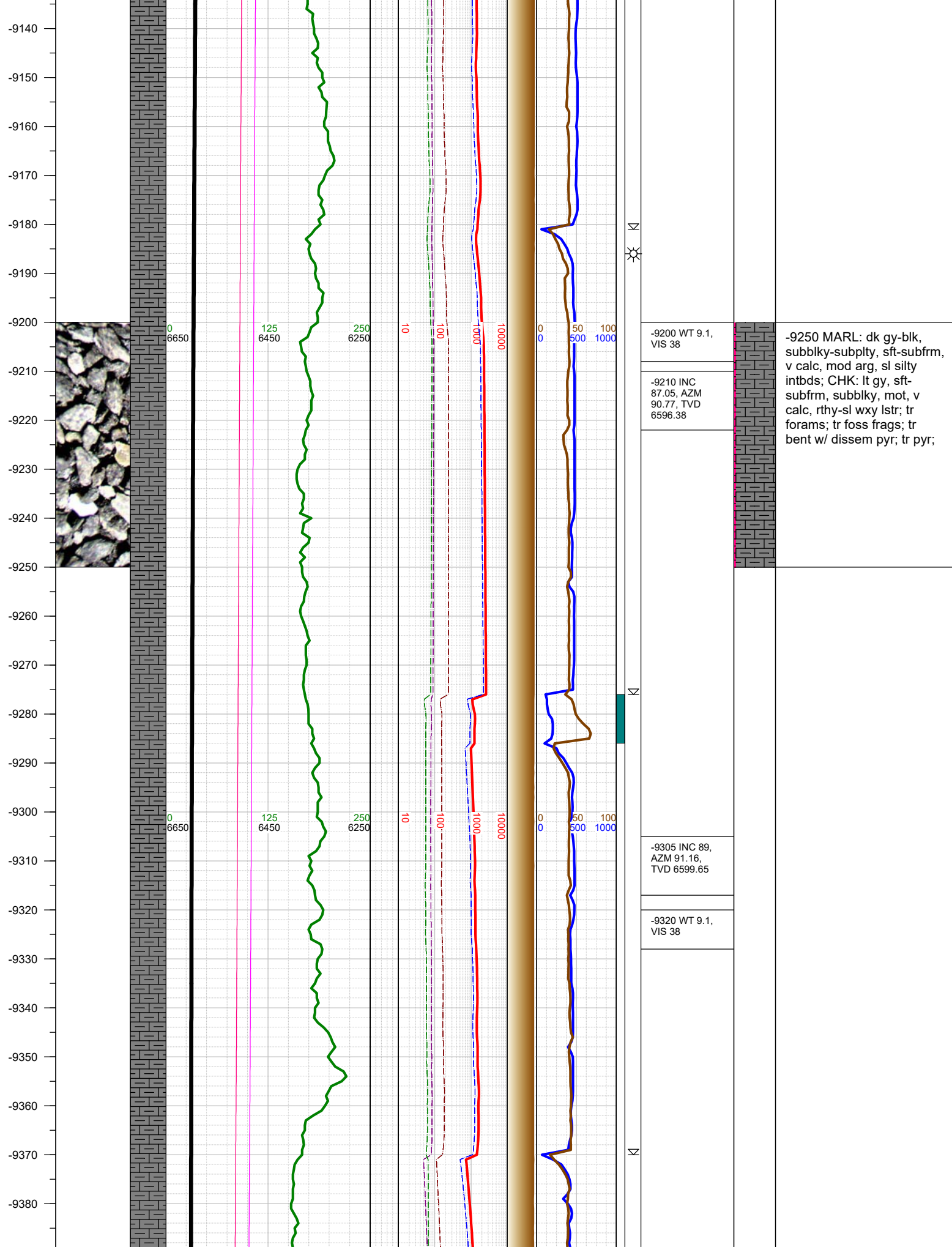


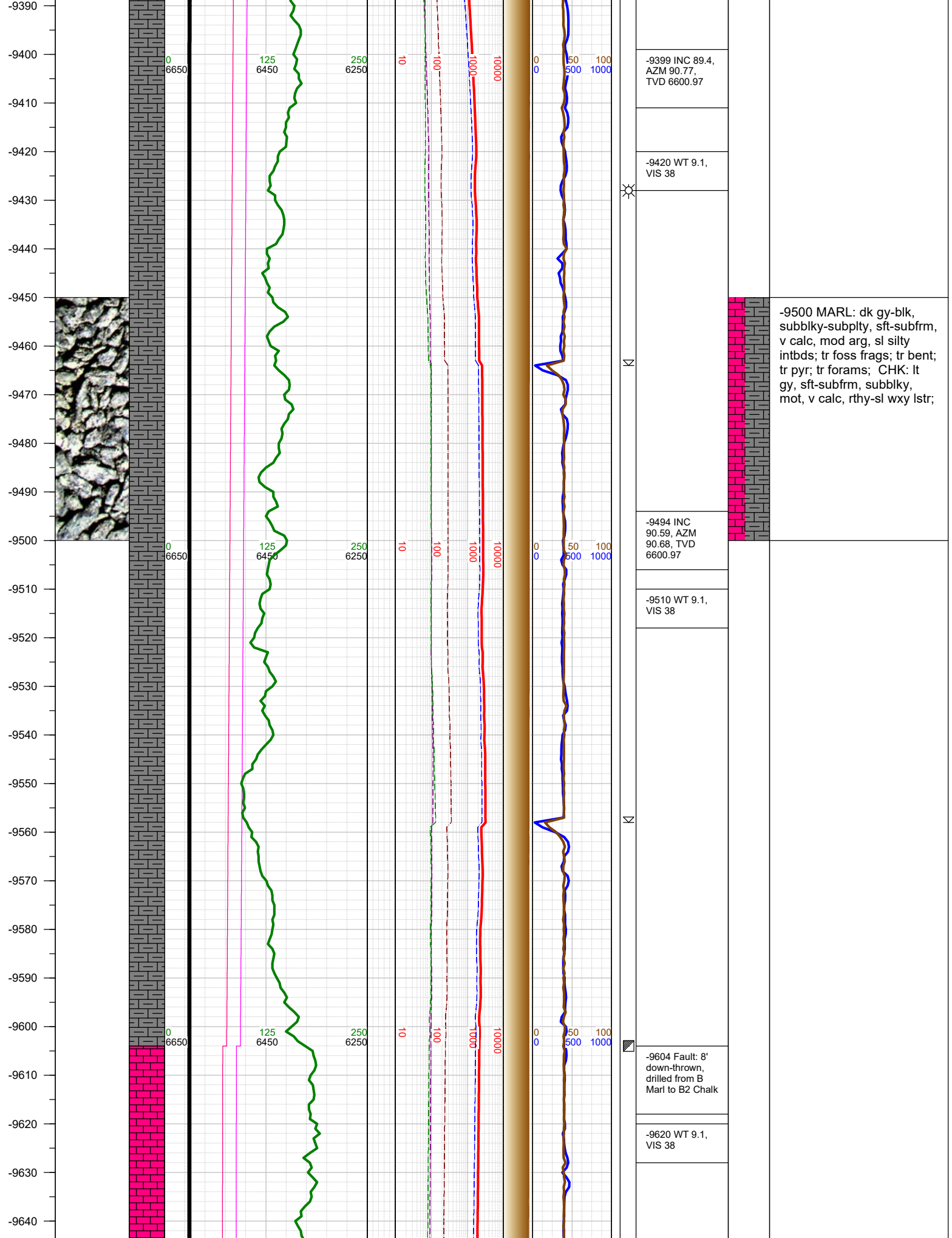
-8250 MARL: dk gy-blk, sbblky-sbplty, sft-sbfrm, v calc, mod arg, sl silty intbds;tr foss frags; CHK: lt gy, sft-sbfrm, sbblky, mot, v calc, rthy-sl wxy lstr; mod bent; tr pyr; tr foss frags

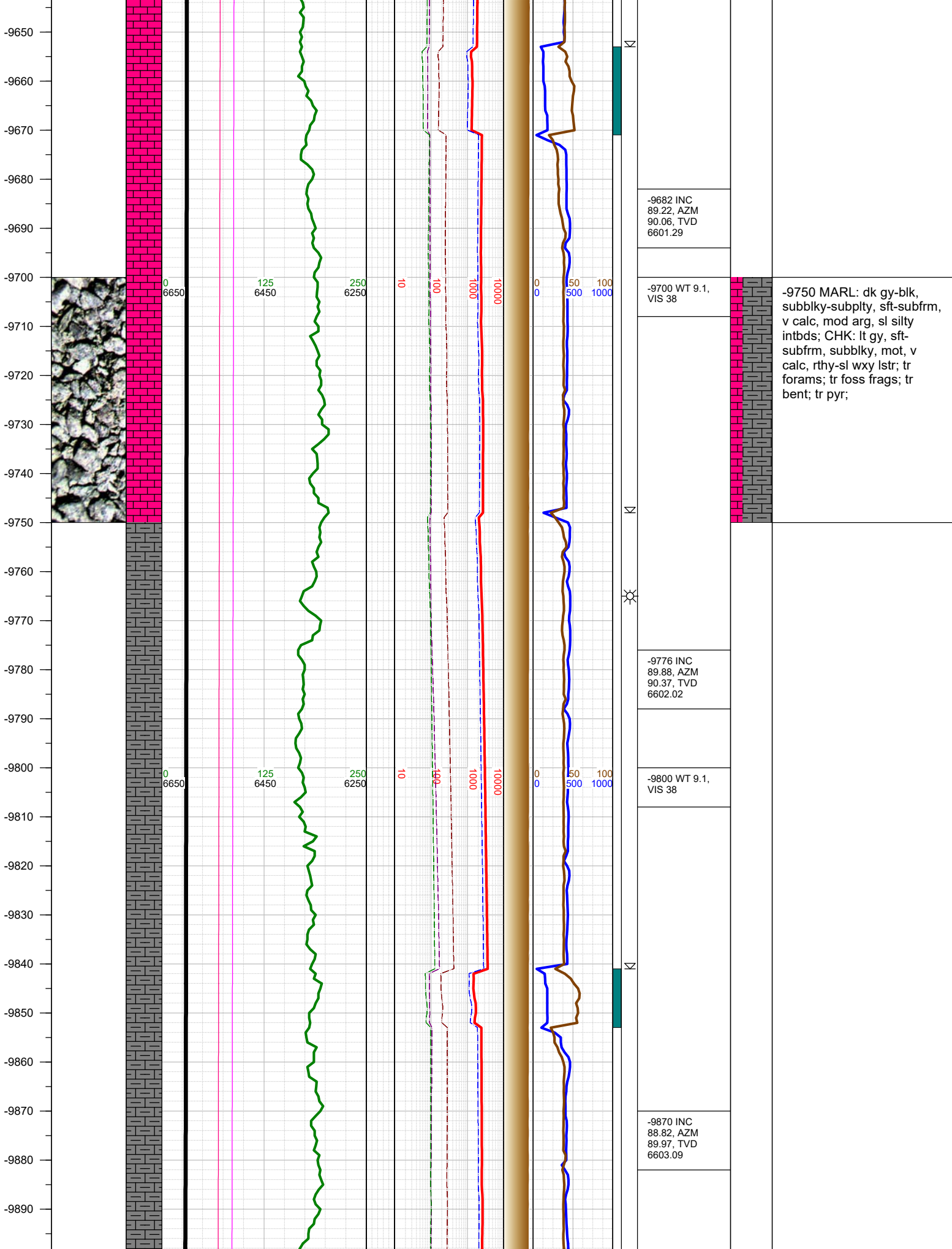


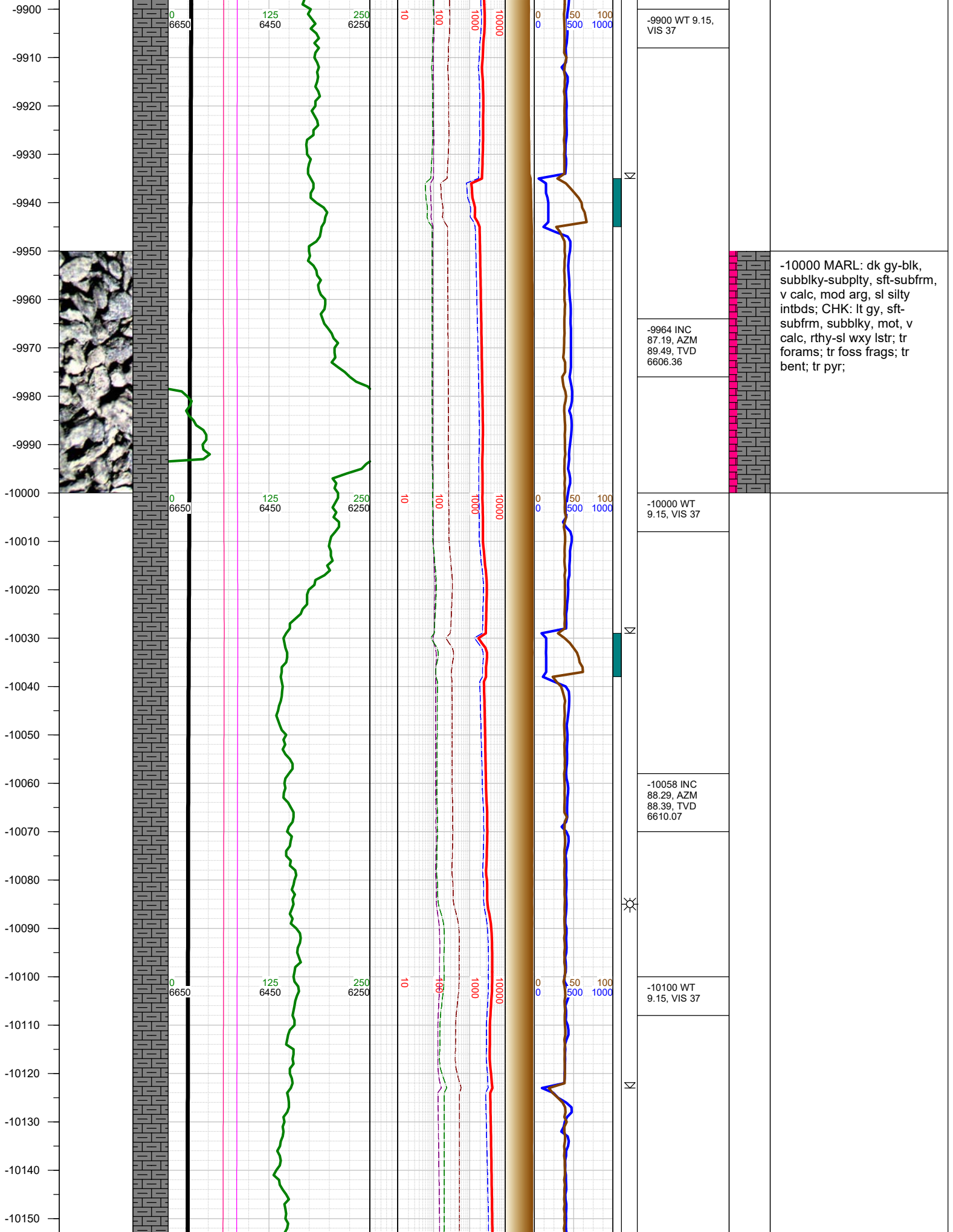


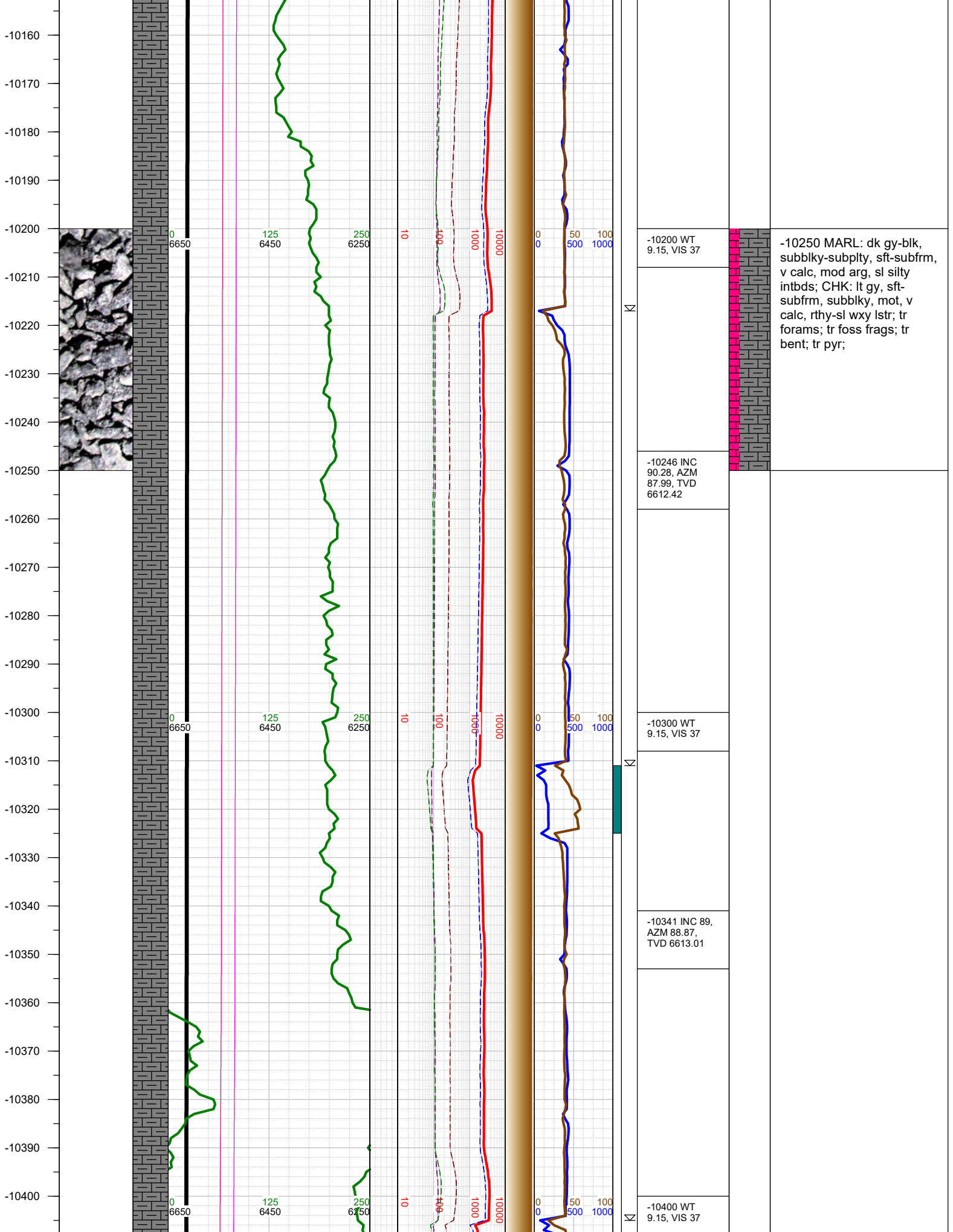


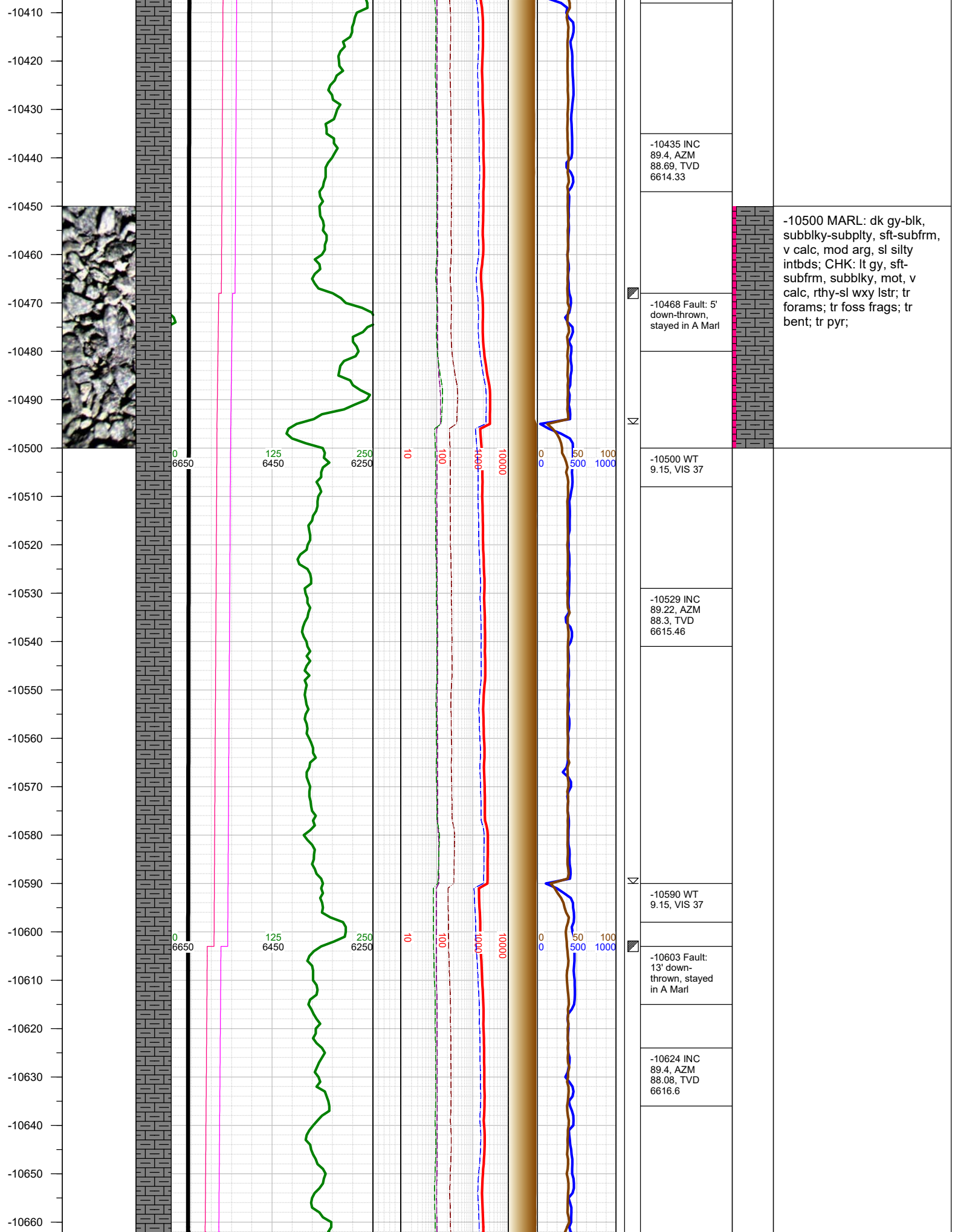


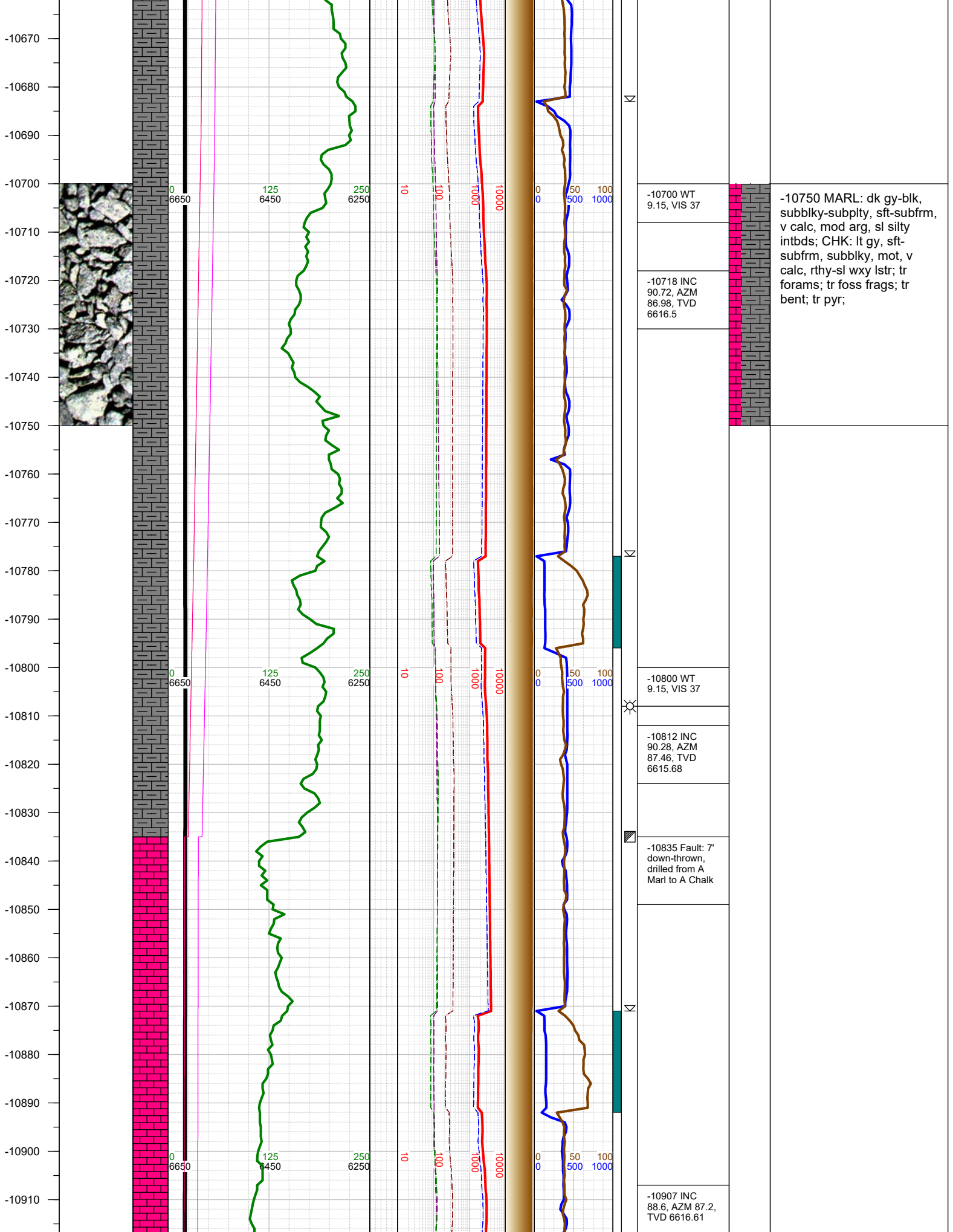


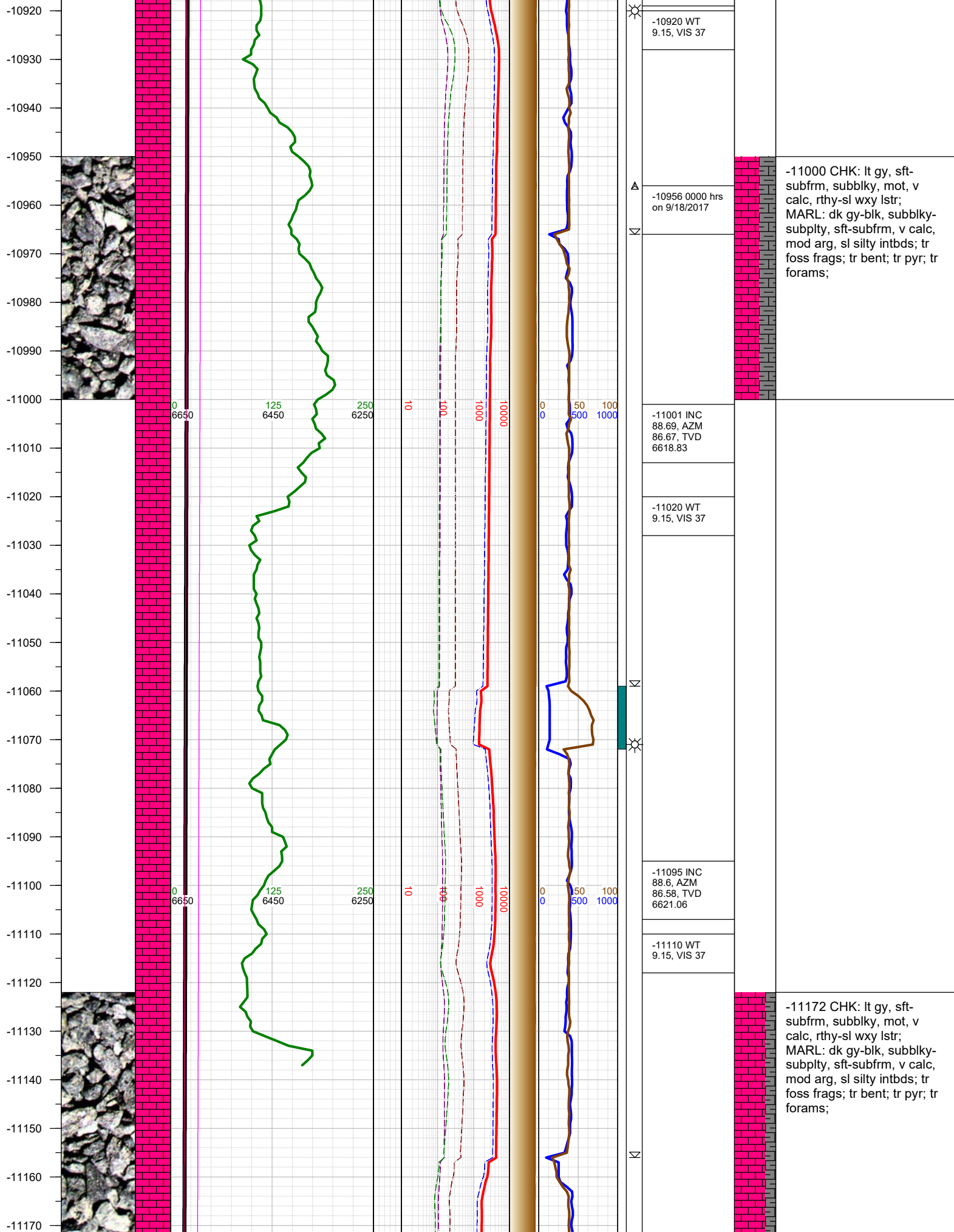












-10920 WT
9.15, VIS 37

-10956 0000 hrs
on 9/18/2017

-11001 INC
88.69, AZM
86.67, TVD
6618.83

-11020 WT
9.15, VIS 37

-11095 INC
88.6, AZM
86.58, TVD
6621.06

-11110 WT
9.15, VIS 37

-11000 CHK: lt gy, sft-subfrm, subblky, mot, v calc, rthy-sl wxy lstr; MARL: dk gy-blk, subblky-subply, sft-subfrm, v calc, mod arg, sl silty intbds; tr foss frags; tr bent; tr pyr; tr forams;

-11172 CHK: lt gy, sft-subfrm, subblky, mot, v calc, rthy-sl wxy lstr; MARL: dk gy-blk, subblky-subply, sft-subfrm, v calc, mod arg, sl silty intbds; tr foss frags; tr bent; tr pyr; tr forams;

