

OPERATOR: **Extraction Oil & Gas**

WELL NAME: **MLD 8**

FIELD NAME: DJ Basin - Wattenberg

DRILLING RIG: Patterson 346

API #: 05-123-44818

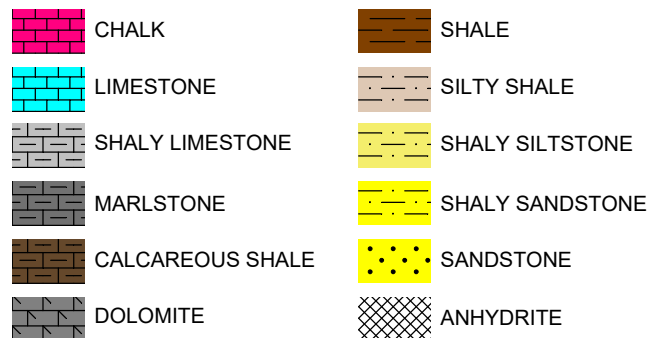
LAT/LONG: 40.30397, -104.996567
SURFACE HOLE: NWNW S22-T4N-R68W, 803' FNL, 632' FWL
BOTTOM HOLE: S22-T4N-R68W, 940' FNL, 460' FEL



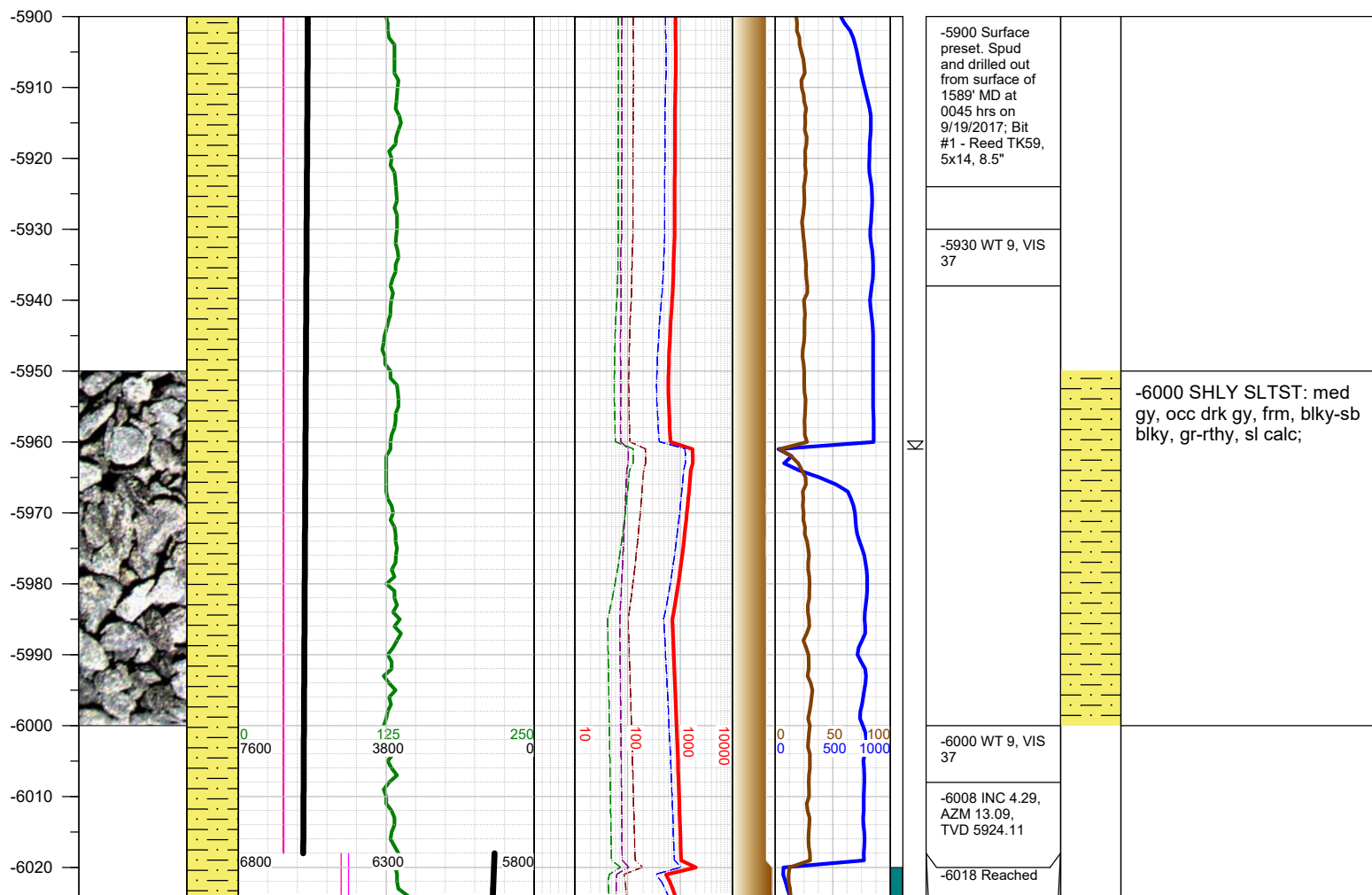
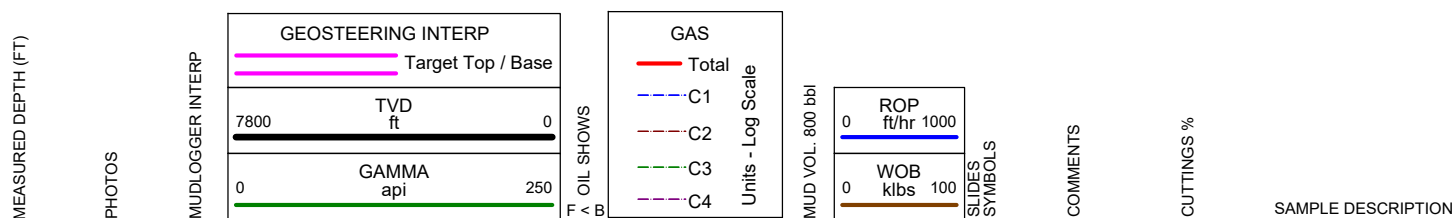
Earth Science Agency, LLC

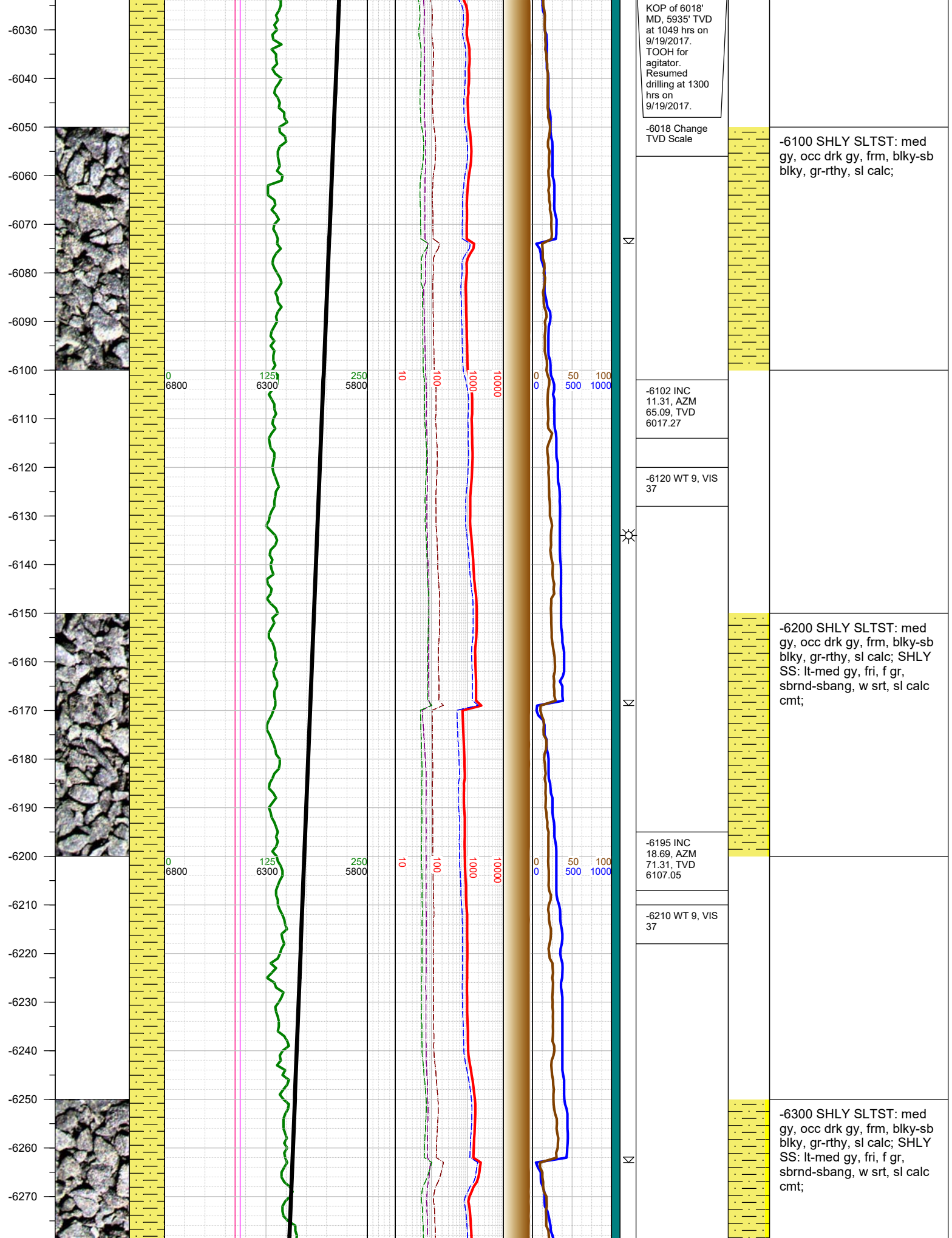
COUNTY: Weld
STATE: Colorado
GROUND ELEVATION: 4876'
KELLY BUSHING: 4901'
DRILLING FLUID: OBM
TVD VS. MD: 6676' / 11284'
SPUD DATE: September 19, 2017
TD DATE: September 20, 2017
DEPTHS LOGGED: 5900' - 11284'
DATES LOGGED: September 19, 2017 - September 20, 2017
GEOLOGISTS: Scott Snoy, Ross Apodaca
SCALE: 5" = 100'

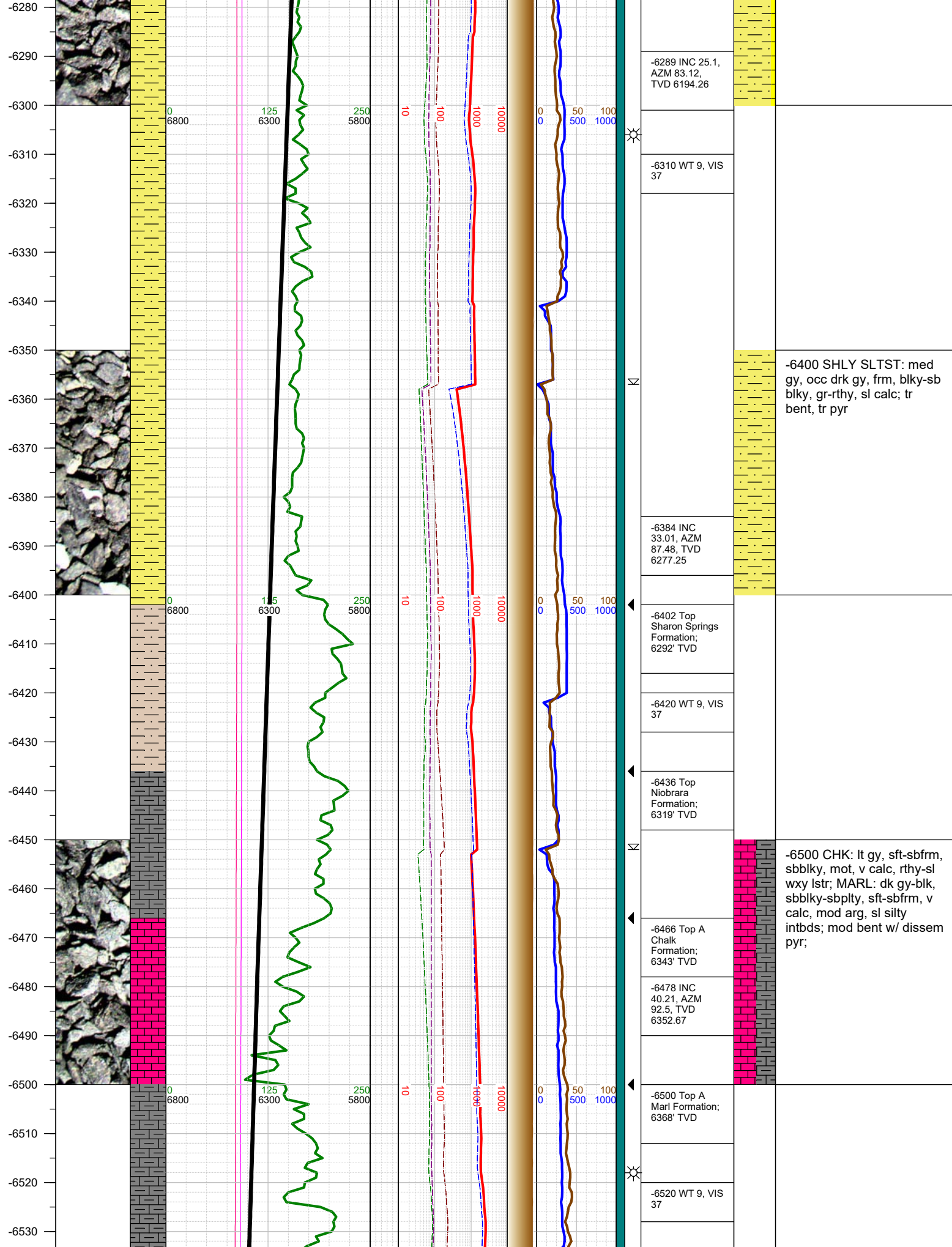
LEGEND

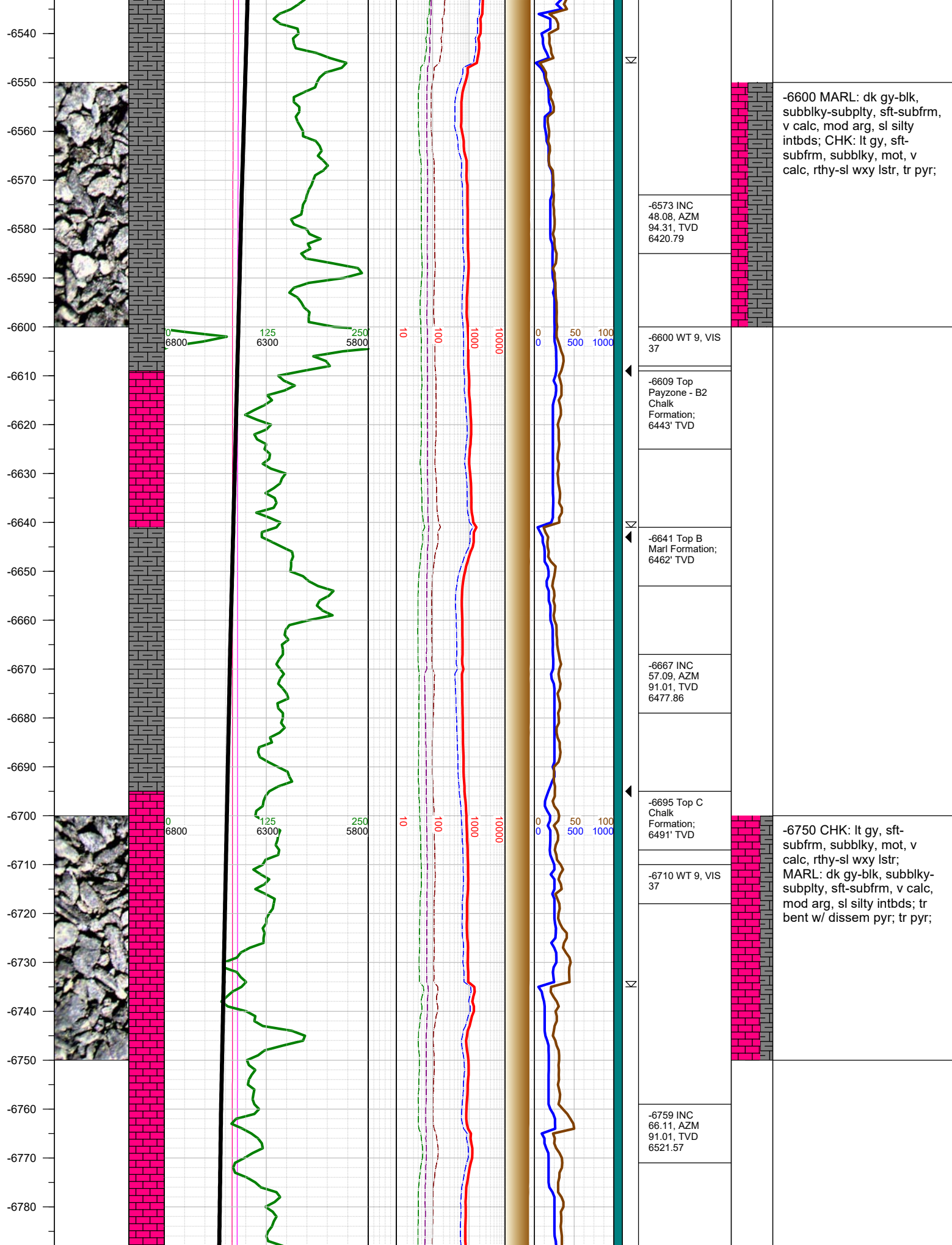


FORMATION ≈ CONNECTION ▲ MIDNIGHT 🏠 NEW BIT ☀️ GAS SHOW 📌 FAULT

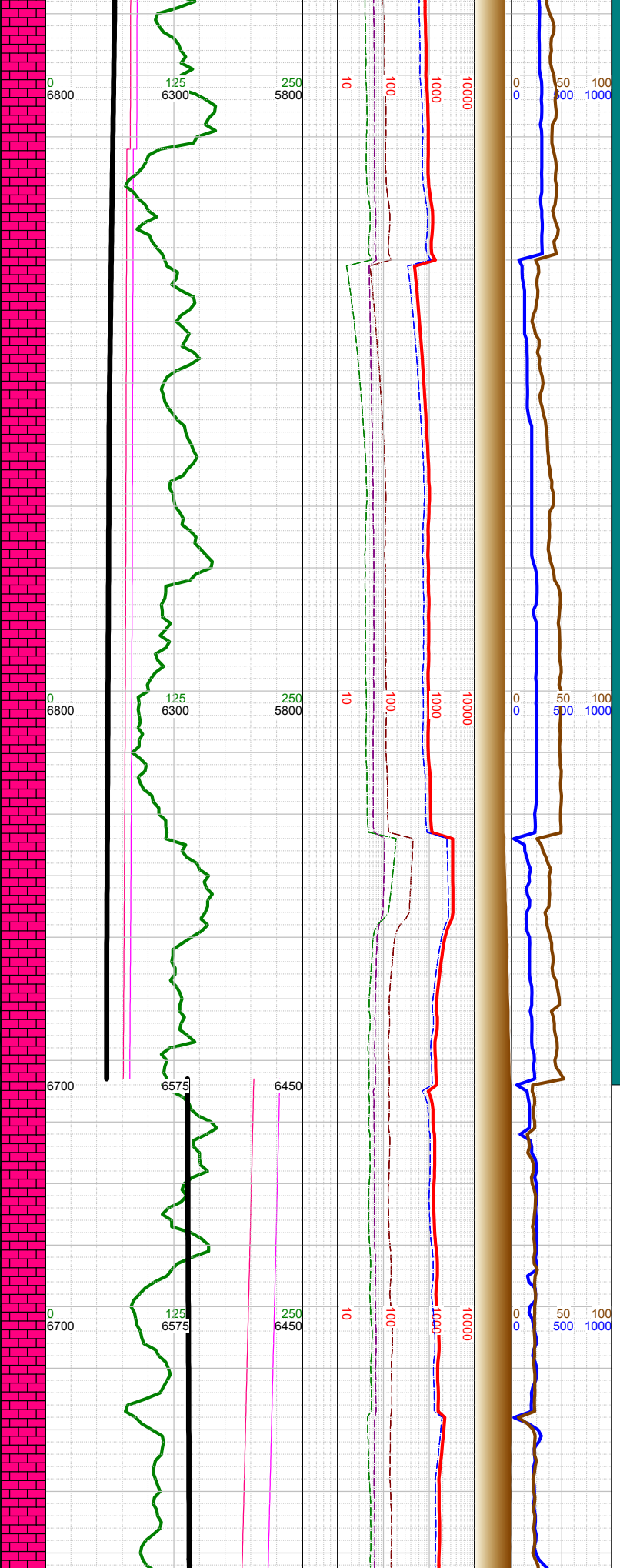
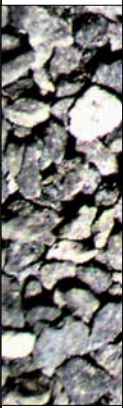




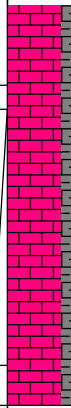




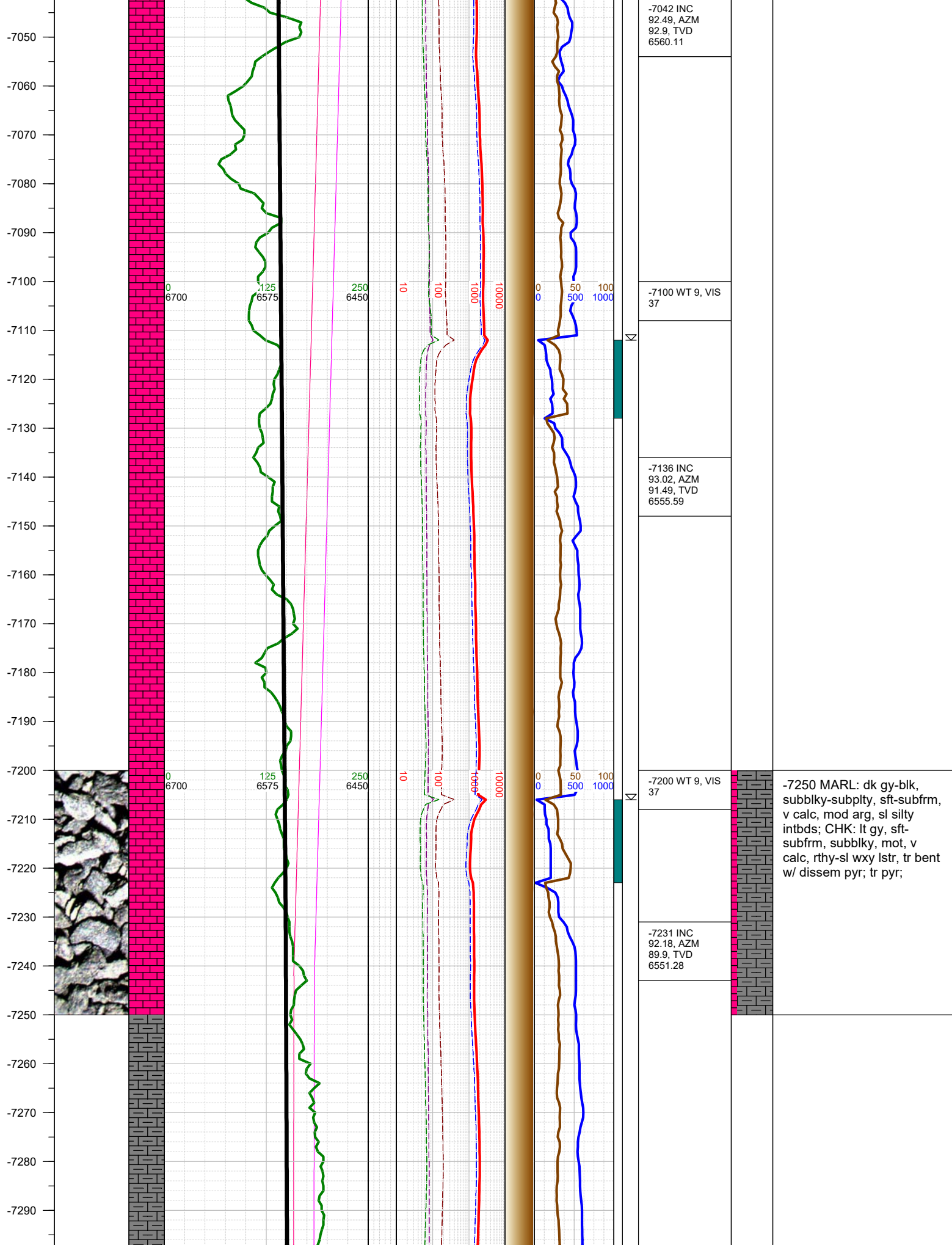
-6790
-6800
-6810
-6820
-6830
-6840
-6850
-6860
-6870
-6880
-6890
-6900
-6910
-6920
-6930
-6940
-6950
-6960
-6970
-6980
-6990
-7000
-7010
-7020
-7030
-7040

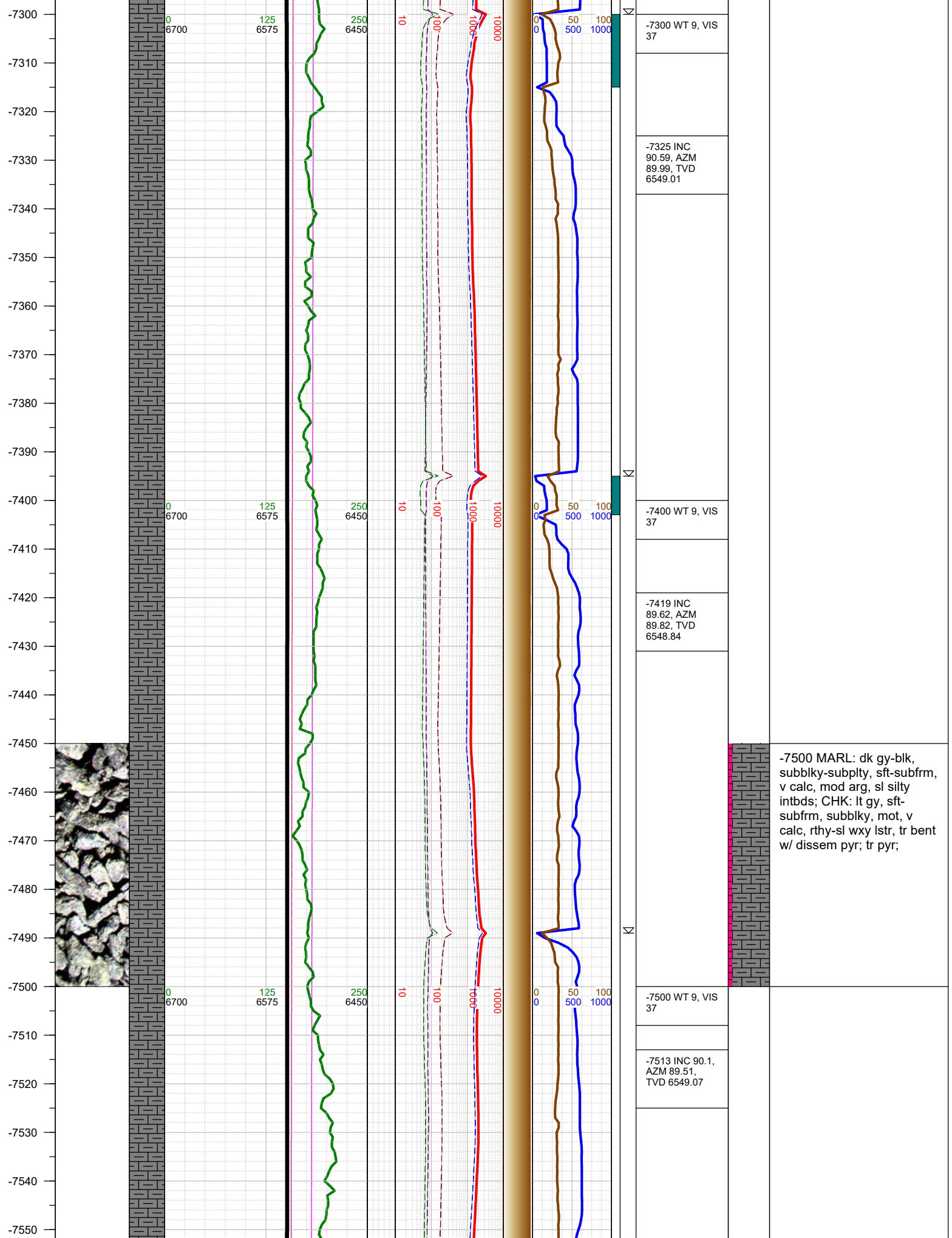


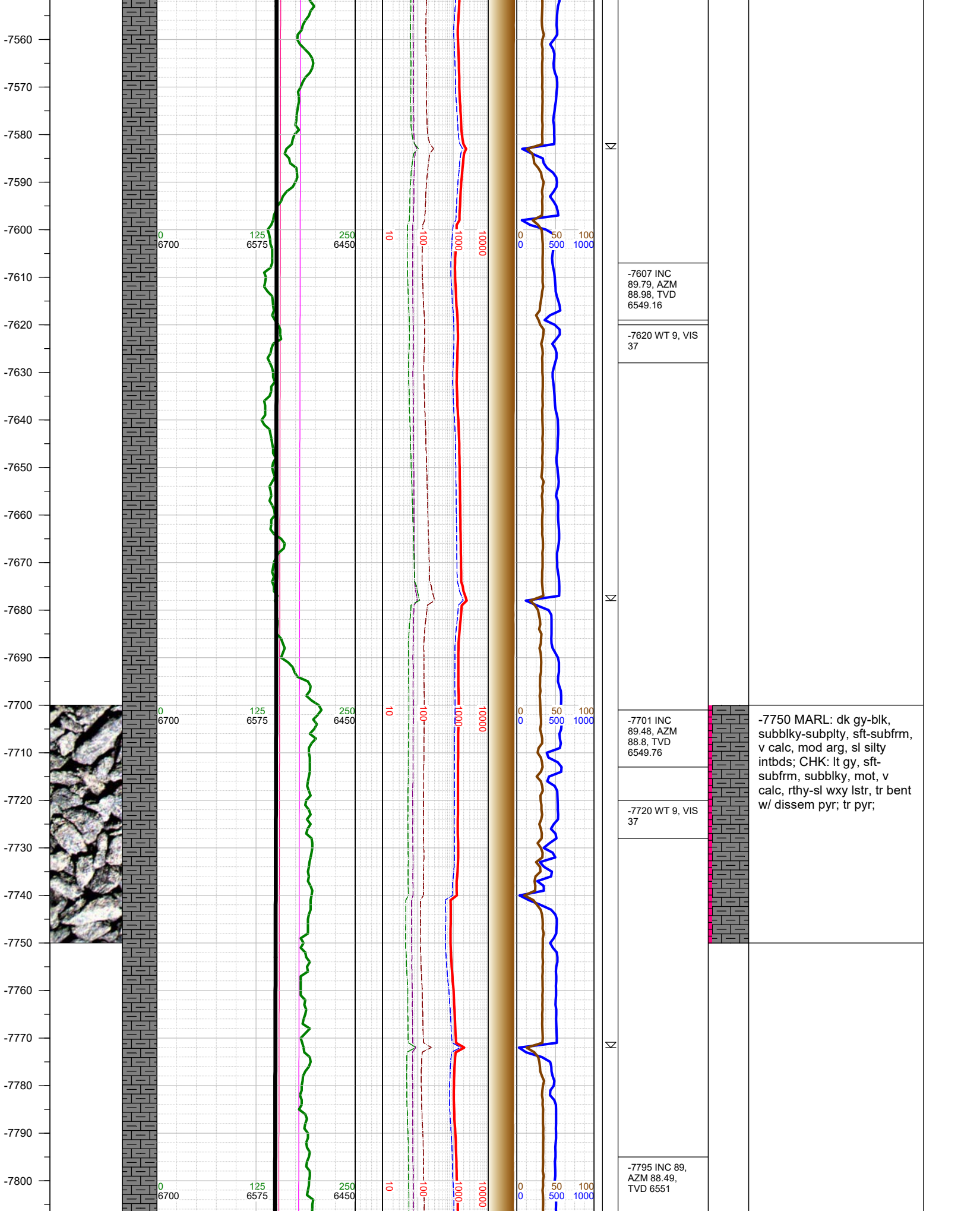
	-6800 WT 9, VIS 37
▣	-6812 Fault: 14' down-throw; stayed in C Chalk
▣	-6853 INC 76.8, AZM 91.71, TVD 6551.42
	-6900 WT 9, VIS 37
☀	-6948 INC 90.1, AZM 92.28, TVD 6562.24
	-6963 Reached LP of 6963' MD, 6562' TVD at 1840 hrs on 9/19/2017 and immediately began drilling the lateral.
	-6963 Change TVD Scale
	-7000 WT 9, VIS 37

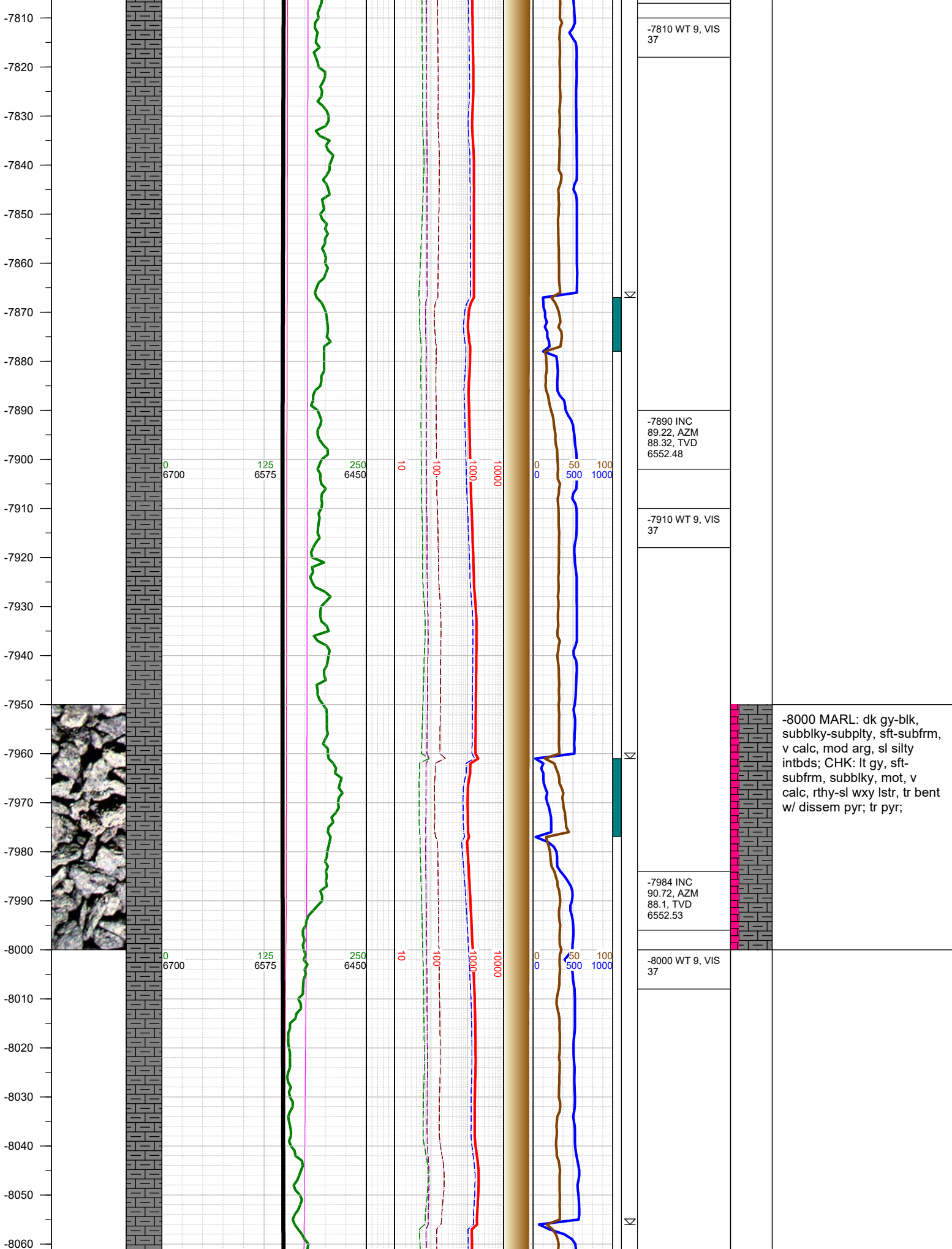


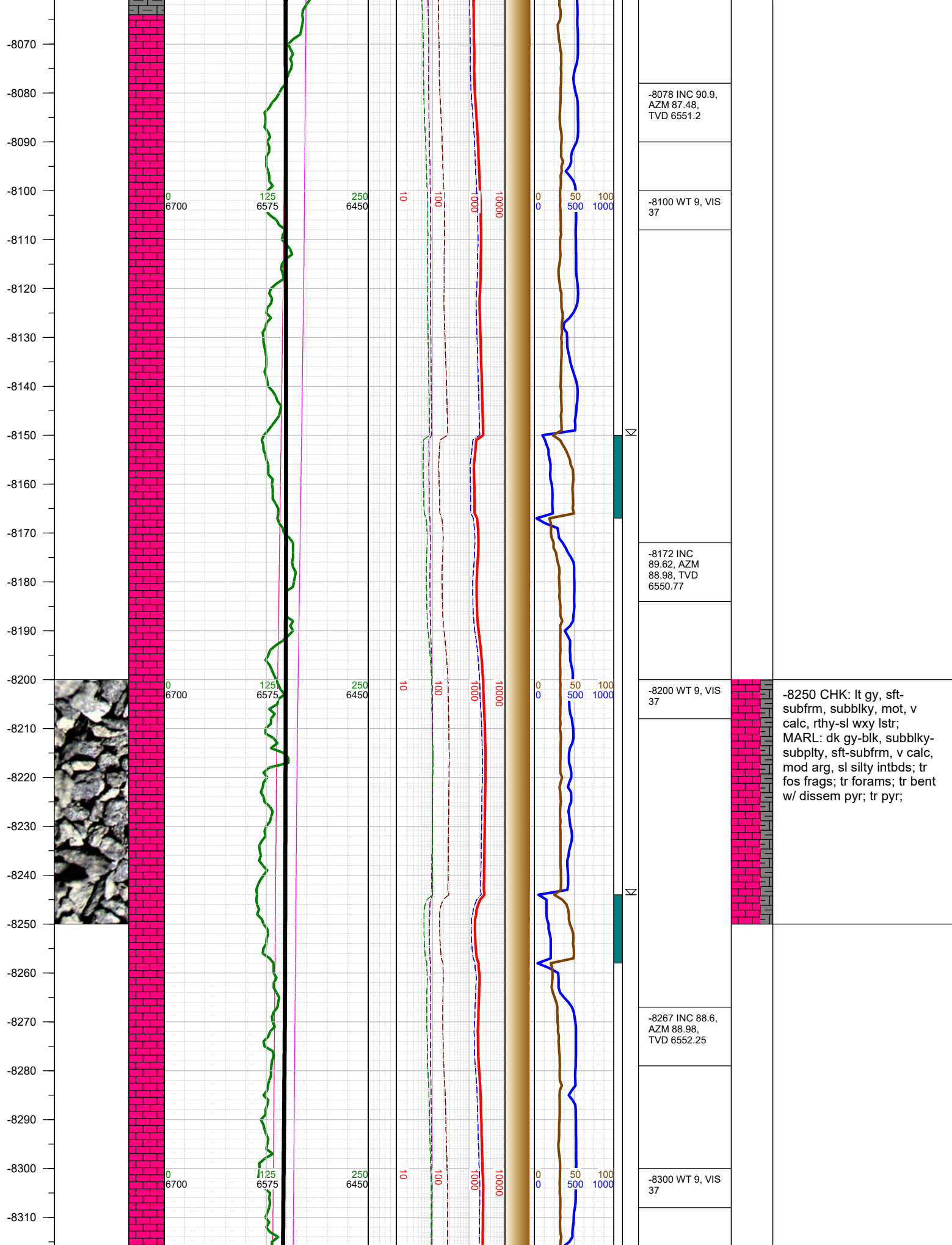
-7000 CHK: lt gy, sft-subfrm, subblky, mot, v calc, rthy-sl wxy lstr; MARL: dk gy-blk, subblky-subplty, sft-subfrm, v calc, mod arg, sl silty intbds; tr bent w/ dissem pyr; tr pyr;



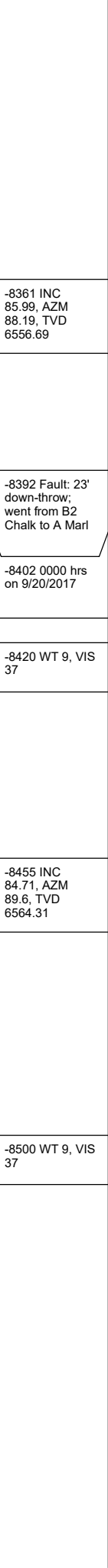
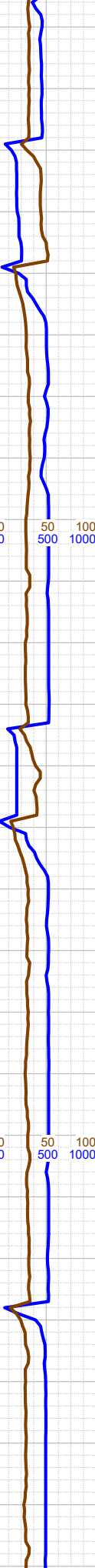
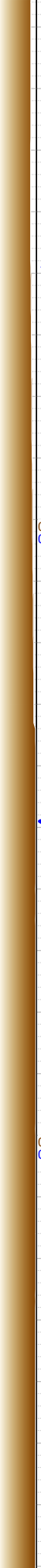
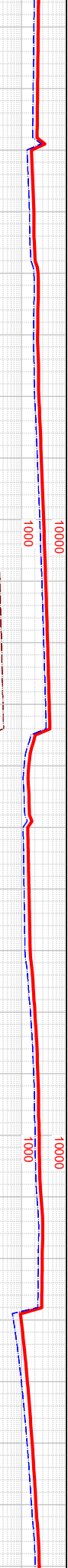
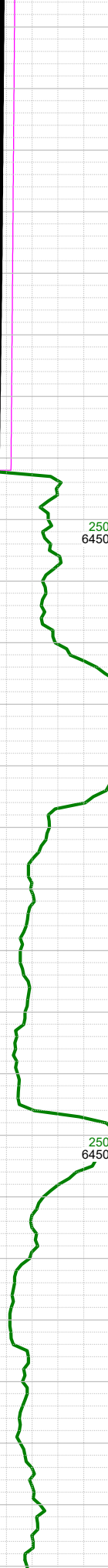
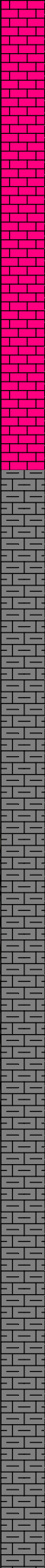








-8320
-8330
-8340
-8350
-8360
-8370
-8380
-8390
-8400
-8410
-8420
-8430
-8440
-8450
-8460
-8470
-8480
-8490
-8500
-8510
-8520
-8530
-8540
-8550
-8560
-8570



-8361 INC
85.99, AZM
88.19, TVD
6556.69

-8392 Fault: 23'
down-throw;
went from B2
Chalk to A Marl

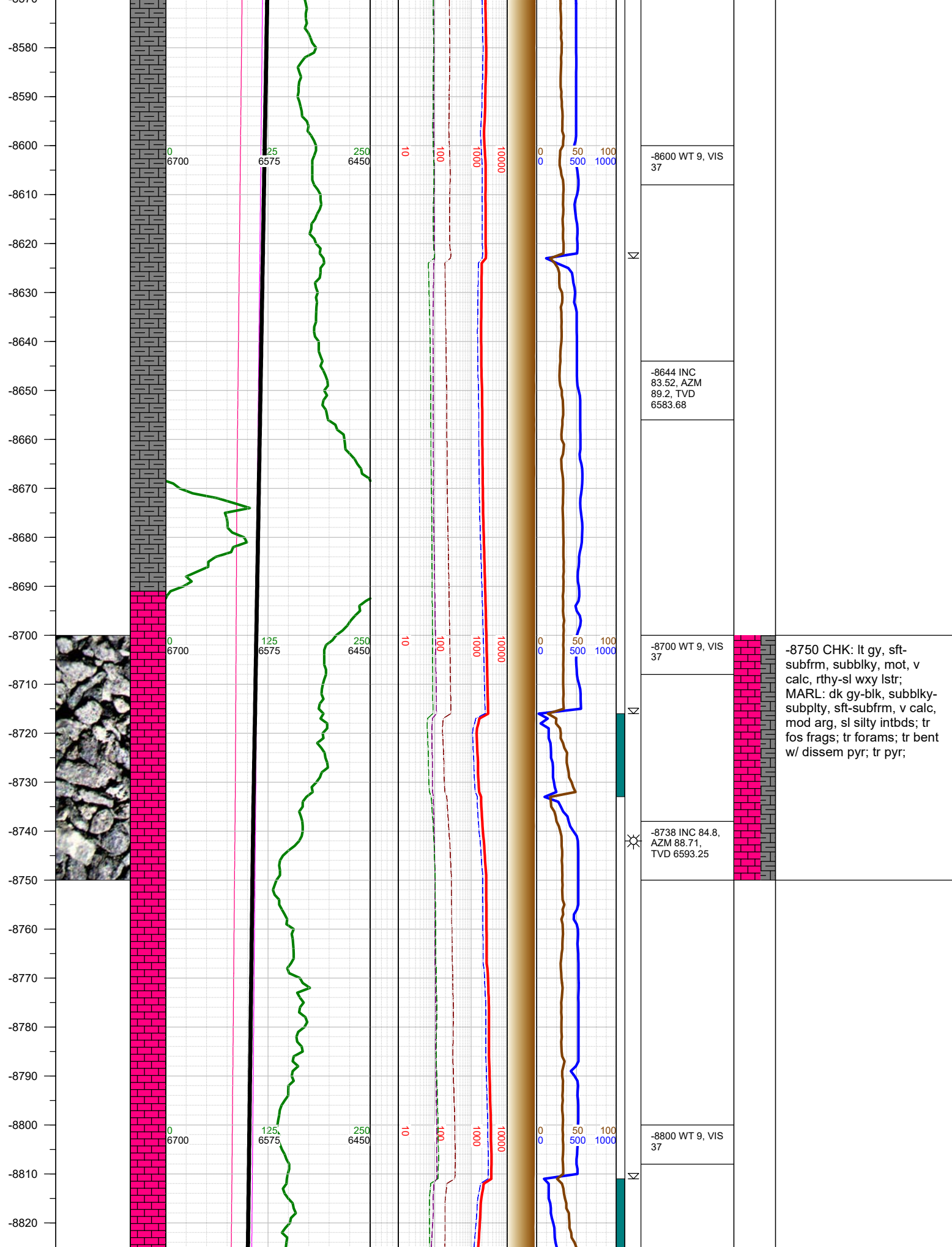
-8402 0000 hrs
on 9/20/2017

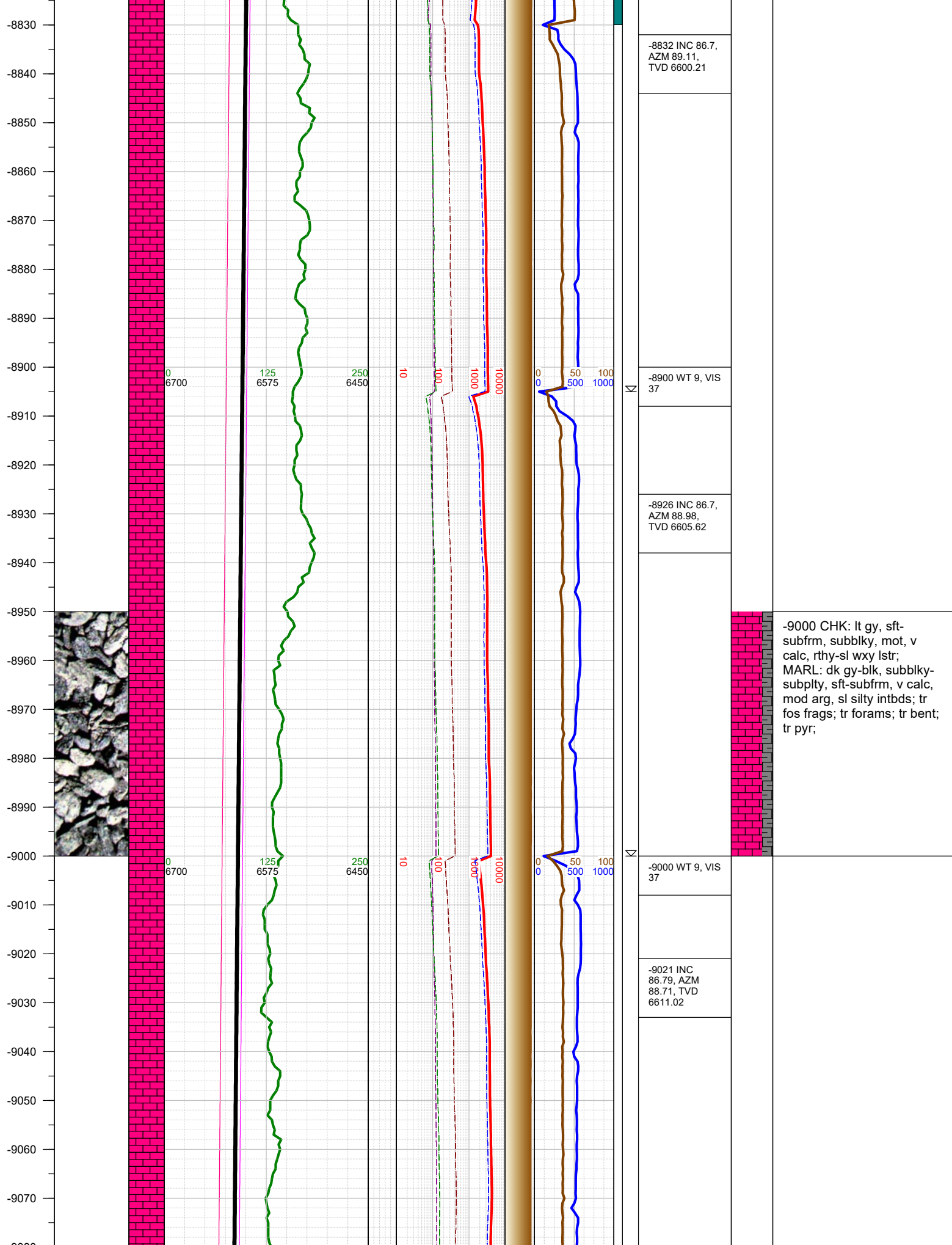
-8420 WT 9, VIS
37

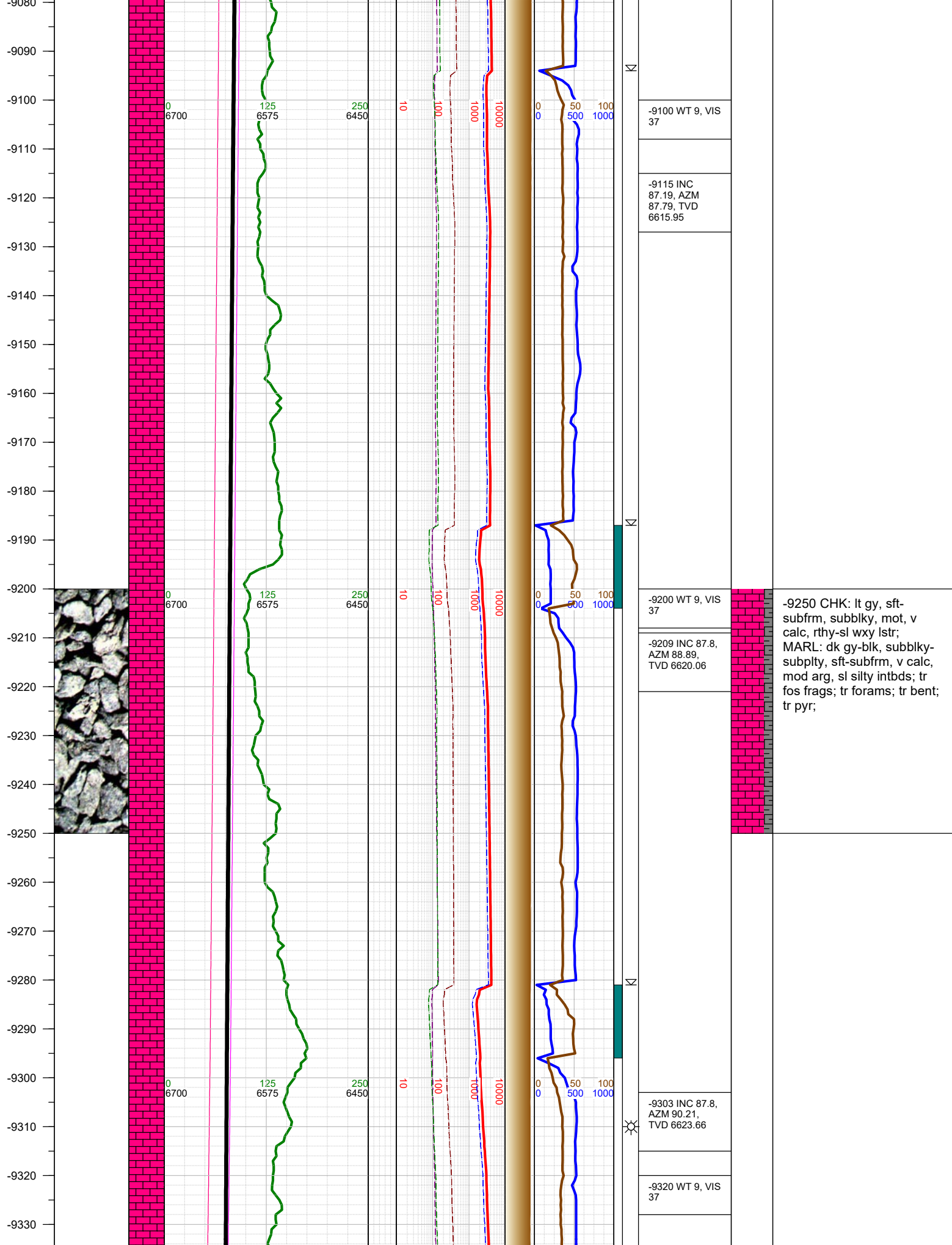
-8455 INC
84.71, AZM
89.6, TVD
6564.31

-8500 MARL: dk gy-blk,
subblky-subply, sft-subfrm,
v calc, mod arg, sl silty
intbds; CHK: lt gy, sft-
subfrm, subblky, mot, v
calc, rthy-sl wxy lstr, tr
bent; tr pyr;

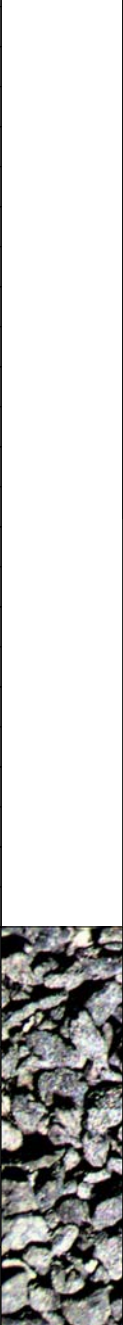
-8500 WT 9, VIS
37







-9340
-9350
-9360
-9370
-9380
-9390
-9400
-9410
-9420
-9430
-9440
-9450
-9460
-9470
-9480
-9490
-9500
-9510
-9520
-9530
-9540
-9550
-9560
-9570
-9580



0
6700

125
6575

250
6450

10

100

1000

10000

0
0

50
500

100
1000

Σ

Σ

Σ

▣ -9397 INC
88.38, AZM
90.21, TVD
6626.8

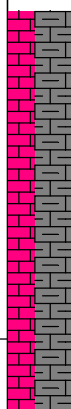
-9399 Fault: 10'
down-throw;
went from B2
Chalk to A Marl

-9430 WT 9, VIS
37

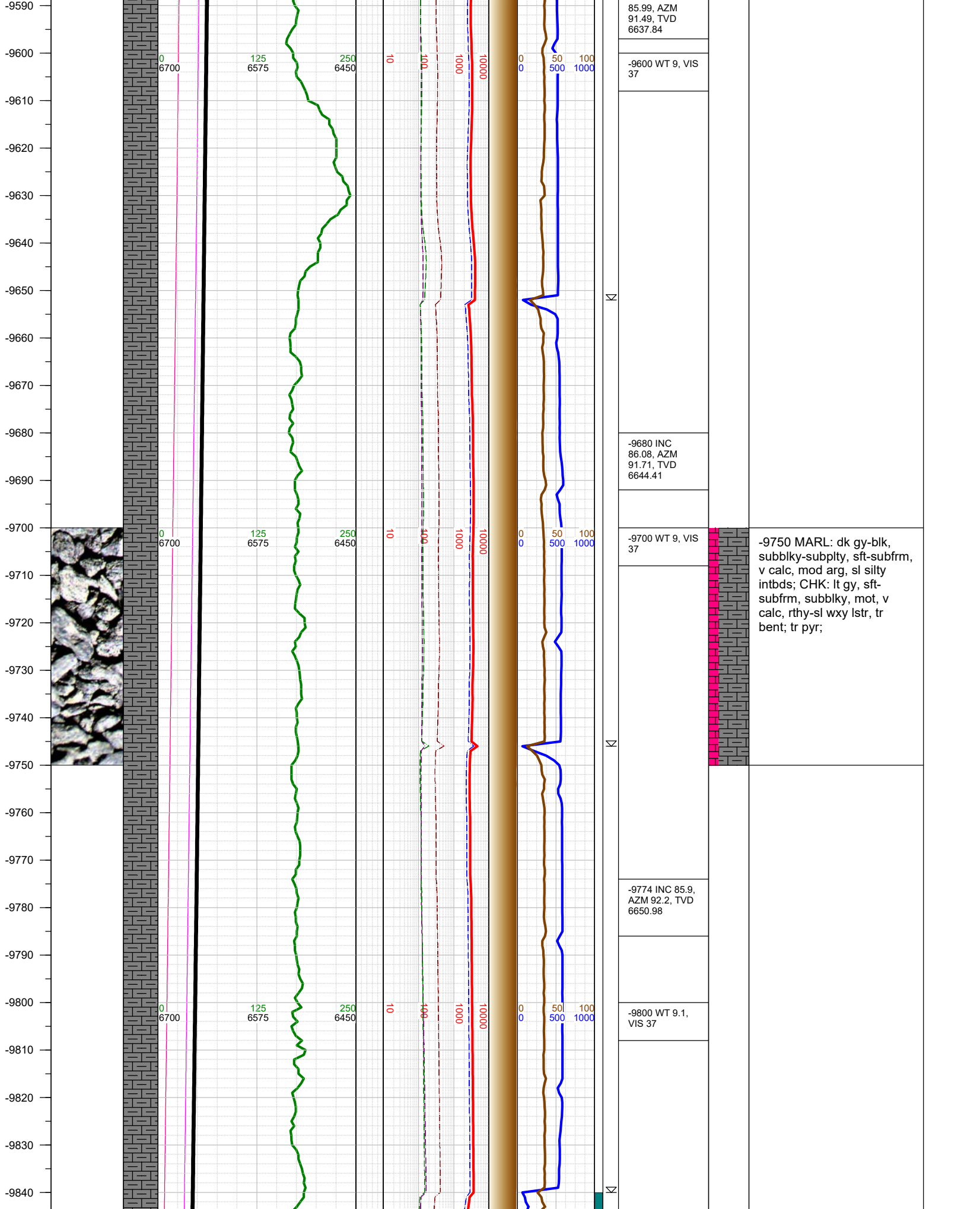
▣ -9491 INC
86.08, AZM
91.4, TVD
6631.34

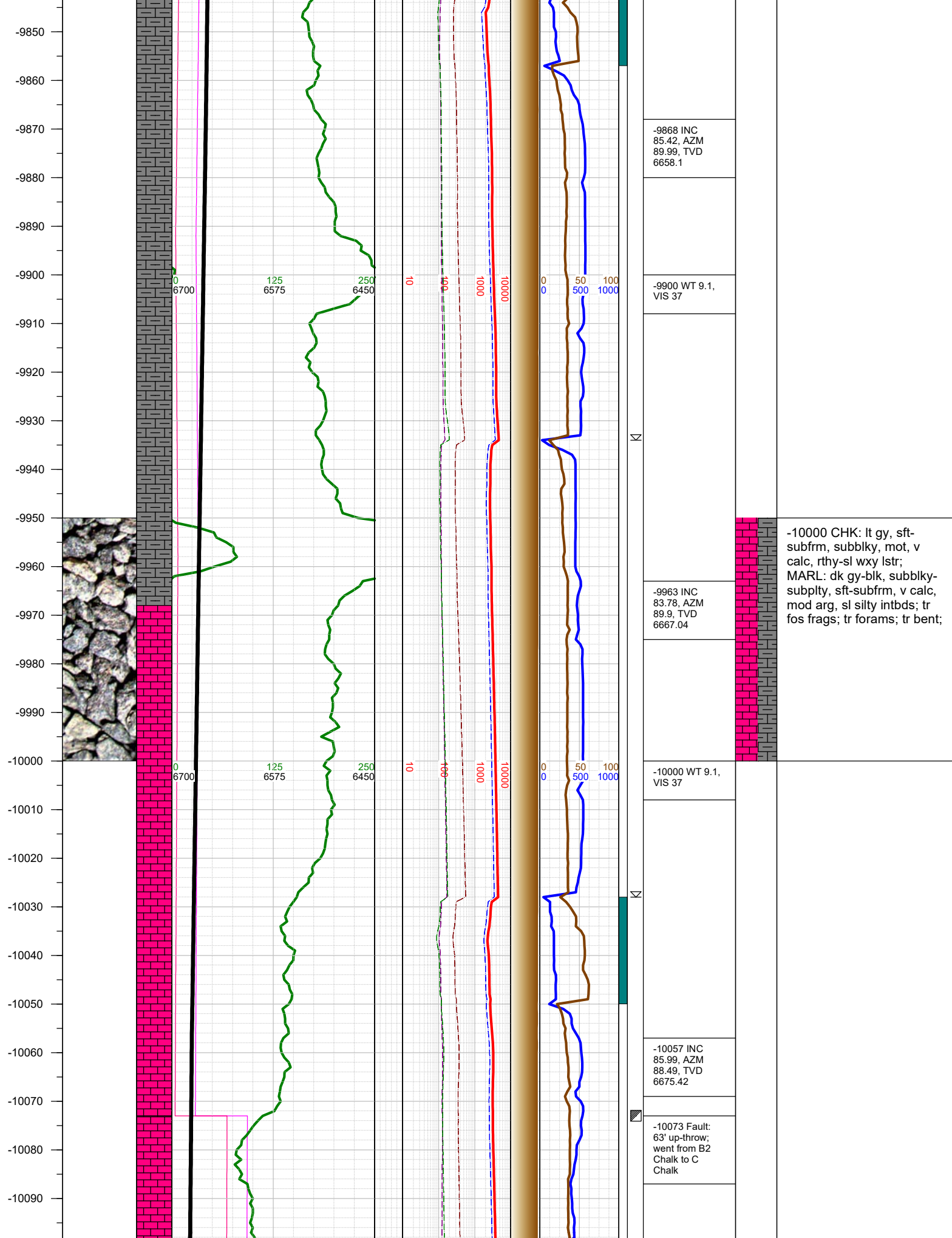
-9510 WT 9, VIS
37

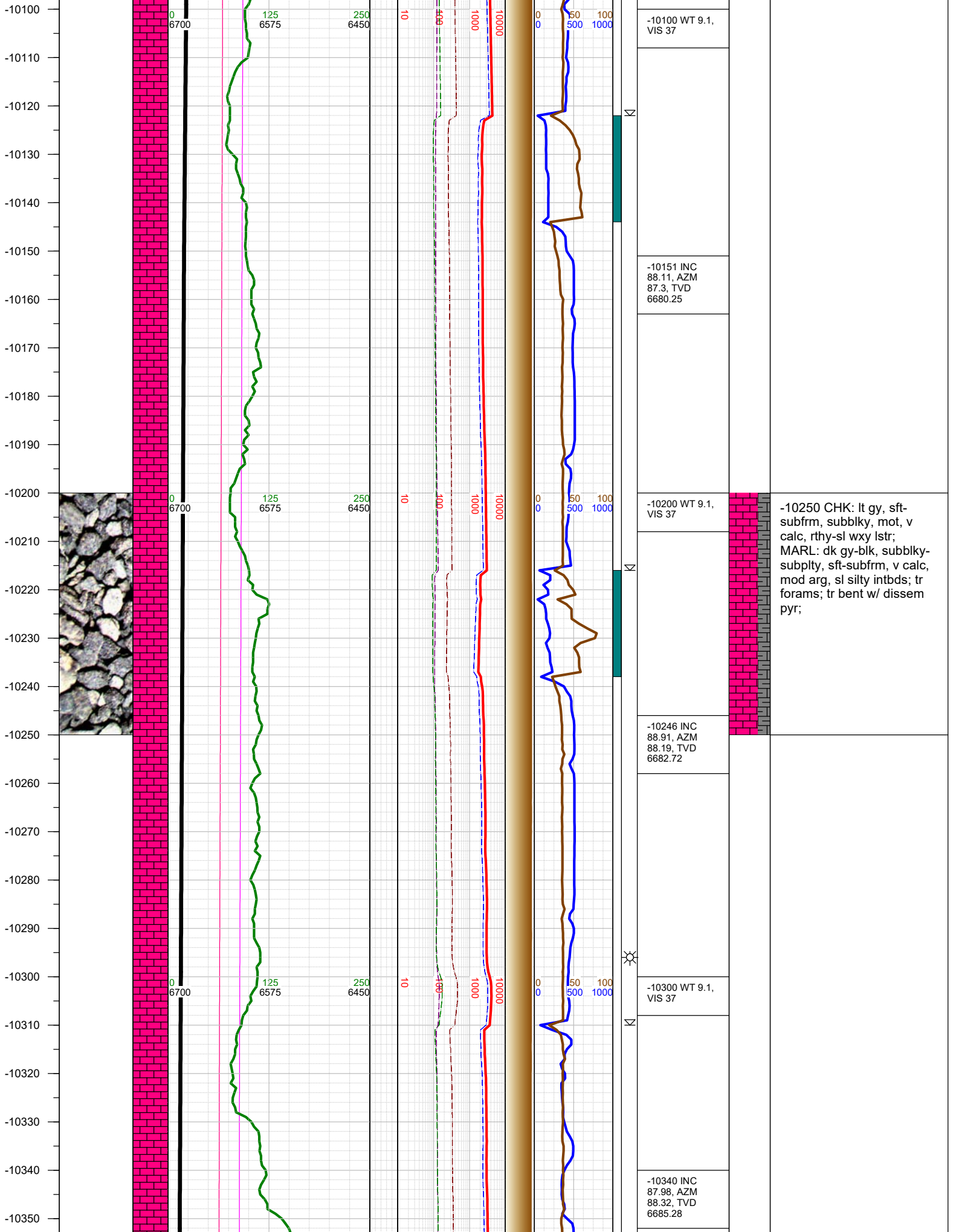
-9585 INC



-9500 MARL: dk gy-blk,
subblky-subplty, sft-subfrm,
v calc, mod arg, sl silty
intbds; CHK: lt gy, sft-
subfrm, subblky, mot, v
calc, rthy-sl wxy lstr, tr
bent; tr pyr;

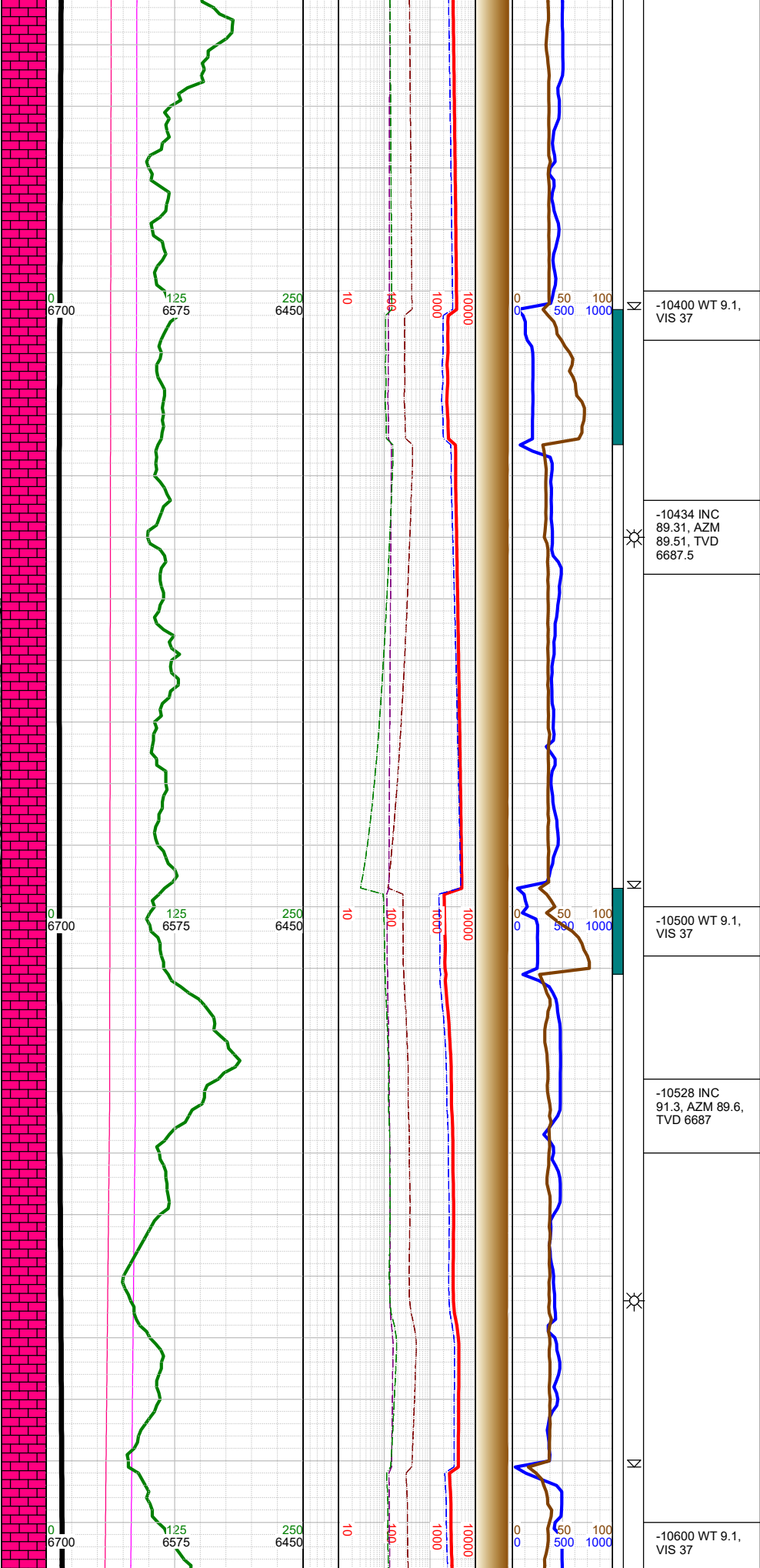
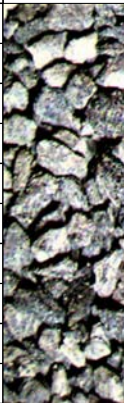






-10250 CHK: lt gy, sft-subfrm, subblky, mot, v calc, rthy-sl wxy lstr; MARL: dk gy-blk, subblky-subply, sft-subfrm, v calc, mod arg, sl silty intbds; tr forams; tr bent w/ dissem pyr;

-10360
-10370
-10380
-10390
-10400
-10410
-10420
-10430
-10440
-10450
-10460
-10470
-10480
-10490
-10500
-10510
-10520
-10530
-10540
-10550
-10560
-10570
-10580
-10590
-10600



-10400 WT 9.1,
VIS 37



-10434 INC
89.31, AZM
89.51, TVD
6687.5

-10500 CHK: lt gy, sft-
subfrm, subblky, mot, v
calc, rthy-sl wxy lstr;
MARL: dk gy-blk, subblky-
subply, sft-subfrm, v calc,
mod arg, sl silty intbds;tr
foss frags; tr forams; tr pyr;

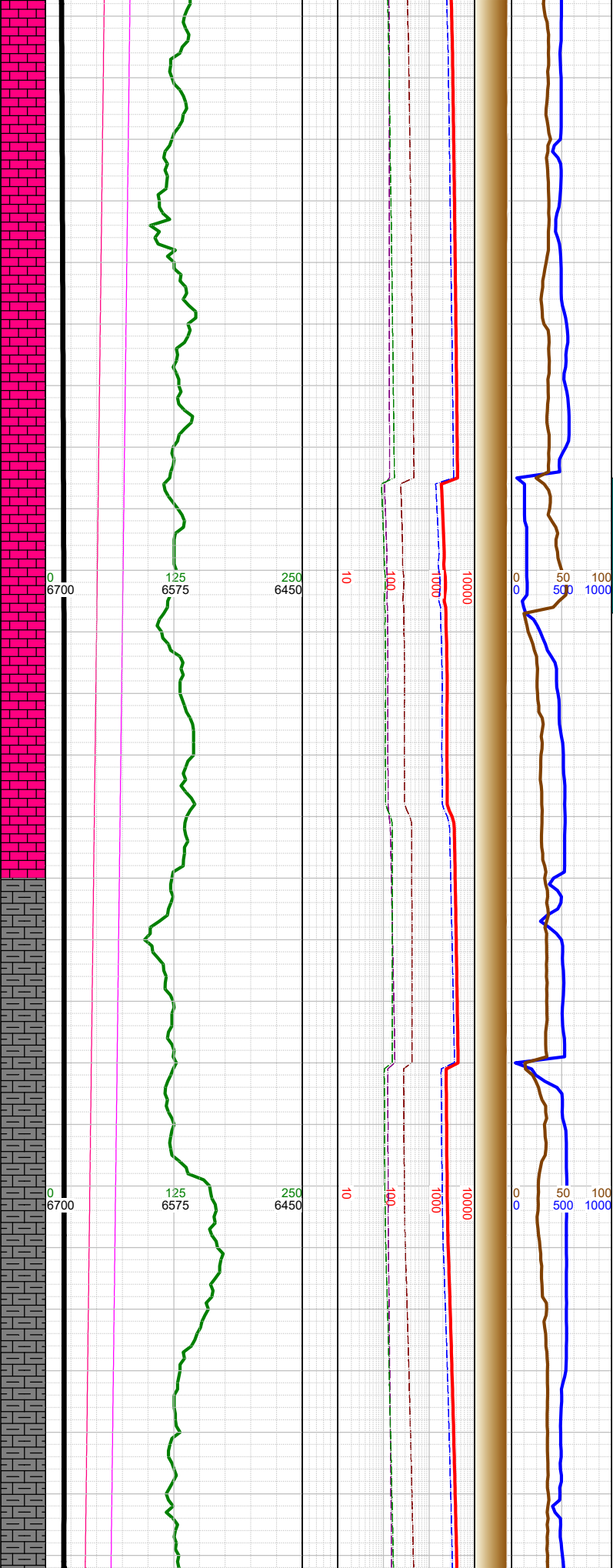
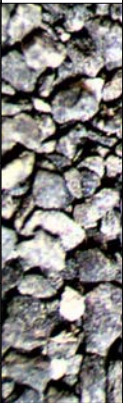
-10500 WT 9.1,
VIS 37

-10528 INC
91.3, AZM 89.6,
TVD 6687

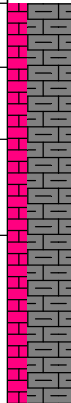


-10600 WT 9.1,
VIS 37

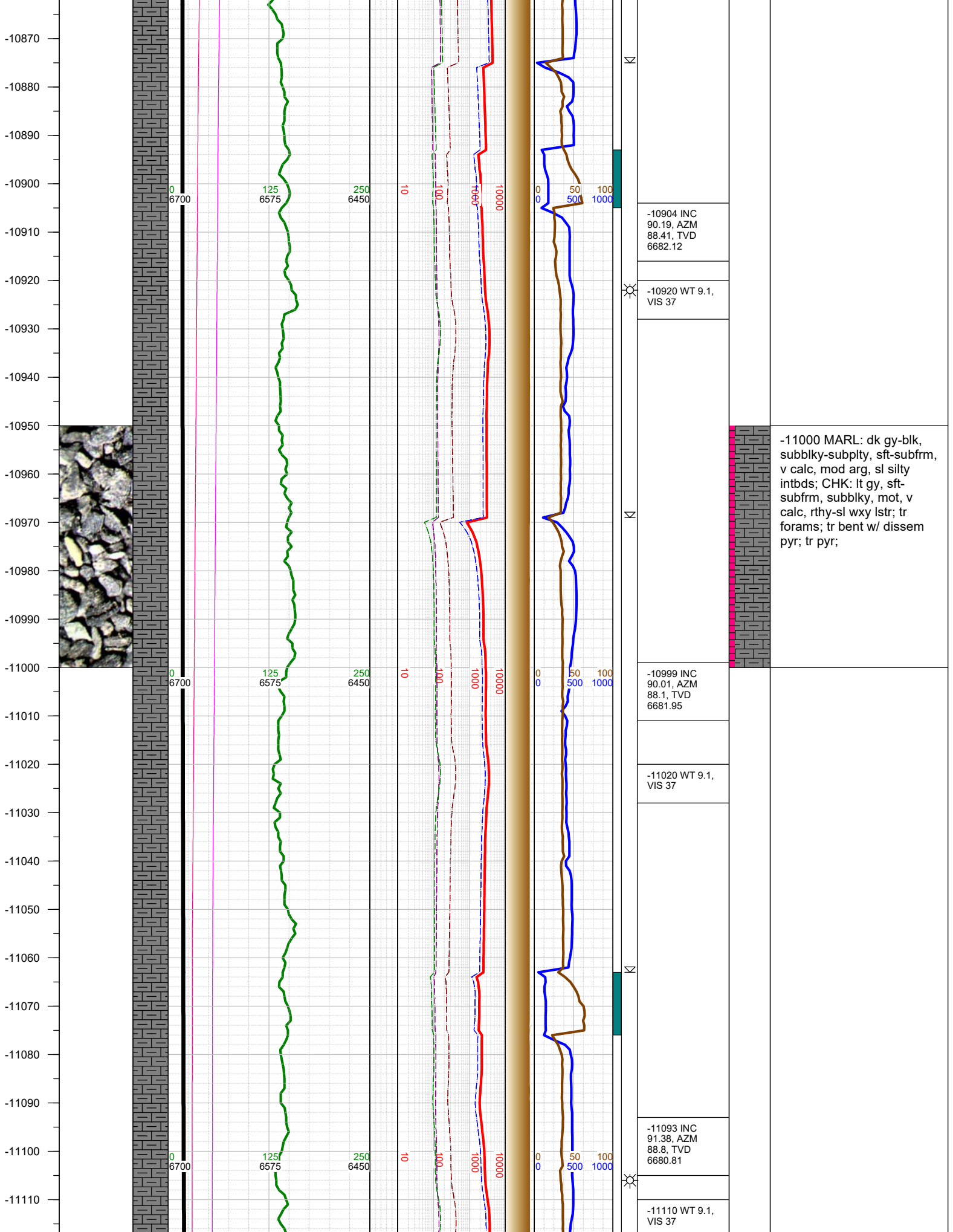
-10610
-10620
-10630
-10640
-10650
-10660
-10670
-10680
-10690
-10700
-10710
-10720
-10730
-10740
-10750
-10760
-10770
-10780
-10790
-10800
-10810
-10820
-10830
-10840
-10850
-10860

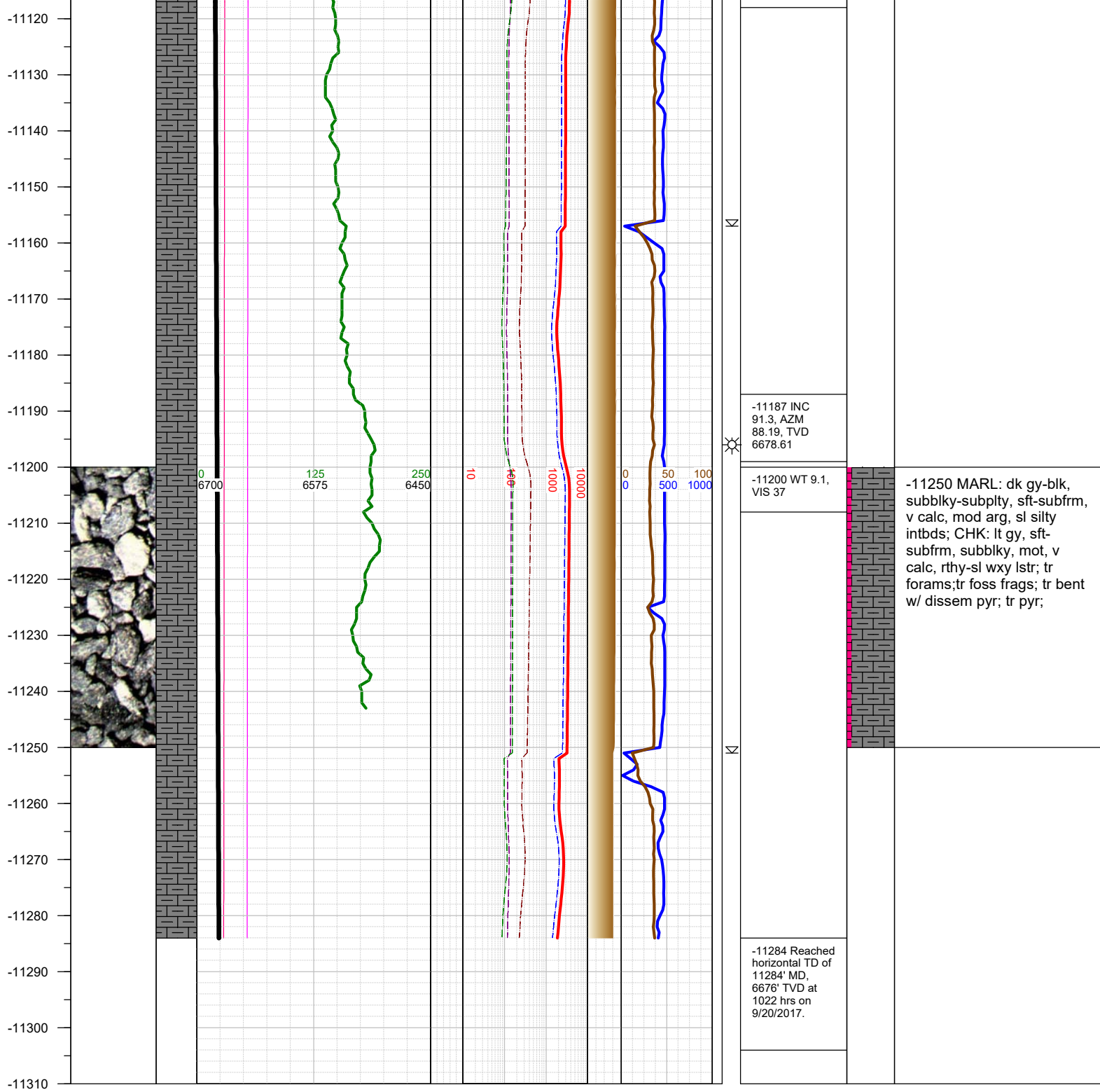


-10623 INC 92.4, AZM 89.29, TVD 6683.93	
-10700 WT 9.1, VIS 37	
-10717 INC 90.19, AZM 88.41, TVD 6681.81	
-10800 WT 9.1, VIS 37	
-10811 INC 89.62, AZM 88.1, TVD 6681.96	



-10750 MARL: dk gy-blk, subblky-subply, sft-subfrm, v calc, mod arg, sl silty intbds; CHK: lt gy, sft-subfrm, subblky, mot, v calc, rthy-sl wxy lstr, tr foss frags; tr forams; tr bent w/ dissem pyr; tr pyr;





TOTAL DEPTH = 11284'

Thank you for using Earth Science Agency