

OPERATOR: **Extraction Oil & Gas**

WELL NAME: **MLD 11**

FIELD NAME: DJ Basin - Wattenberg

DRILLING RIG: Patterson 346

API #: 05-123-44816

LAT/LONG: 40.303972, -104.996868

SURFACE HOLE: NWNW S22-T4N-R68W, 801' FNL, 548' FWL

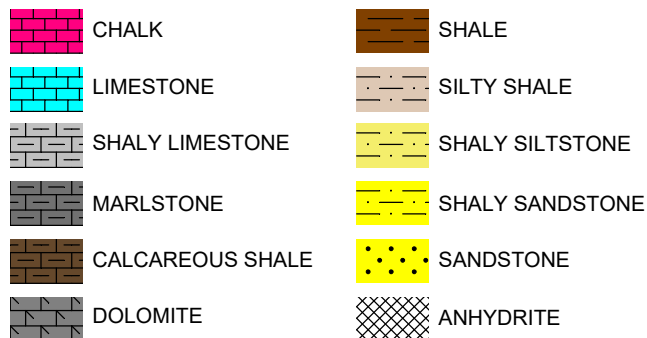
BOTTOM HOLE: S22-T4N-R68W, 855' FNL, 4313' FEL



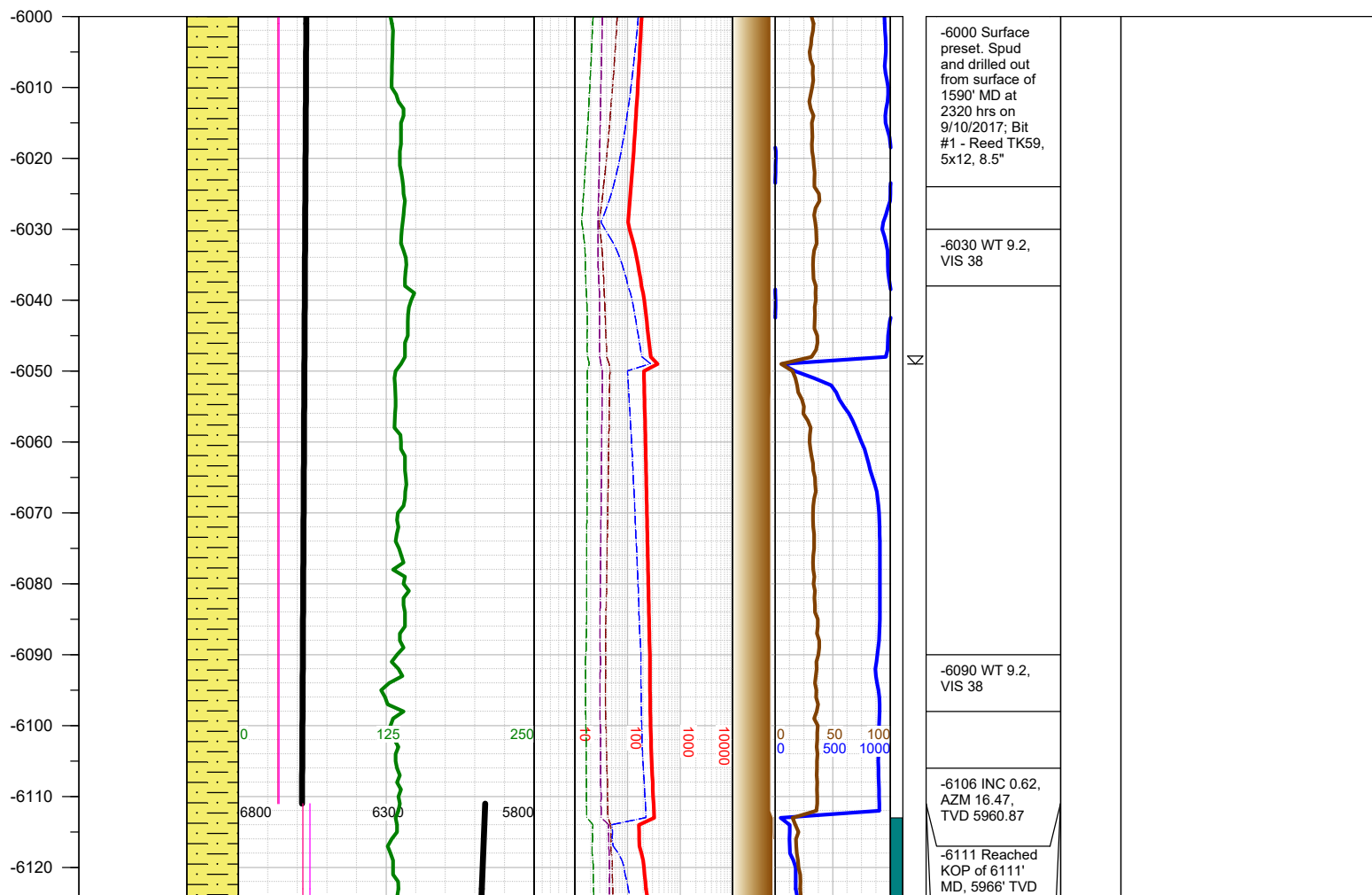
Earth Science Agency, LLC

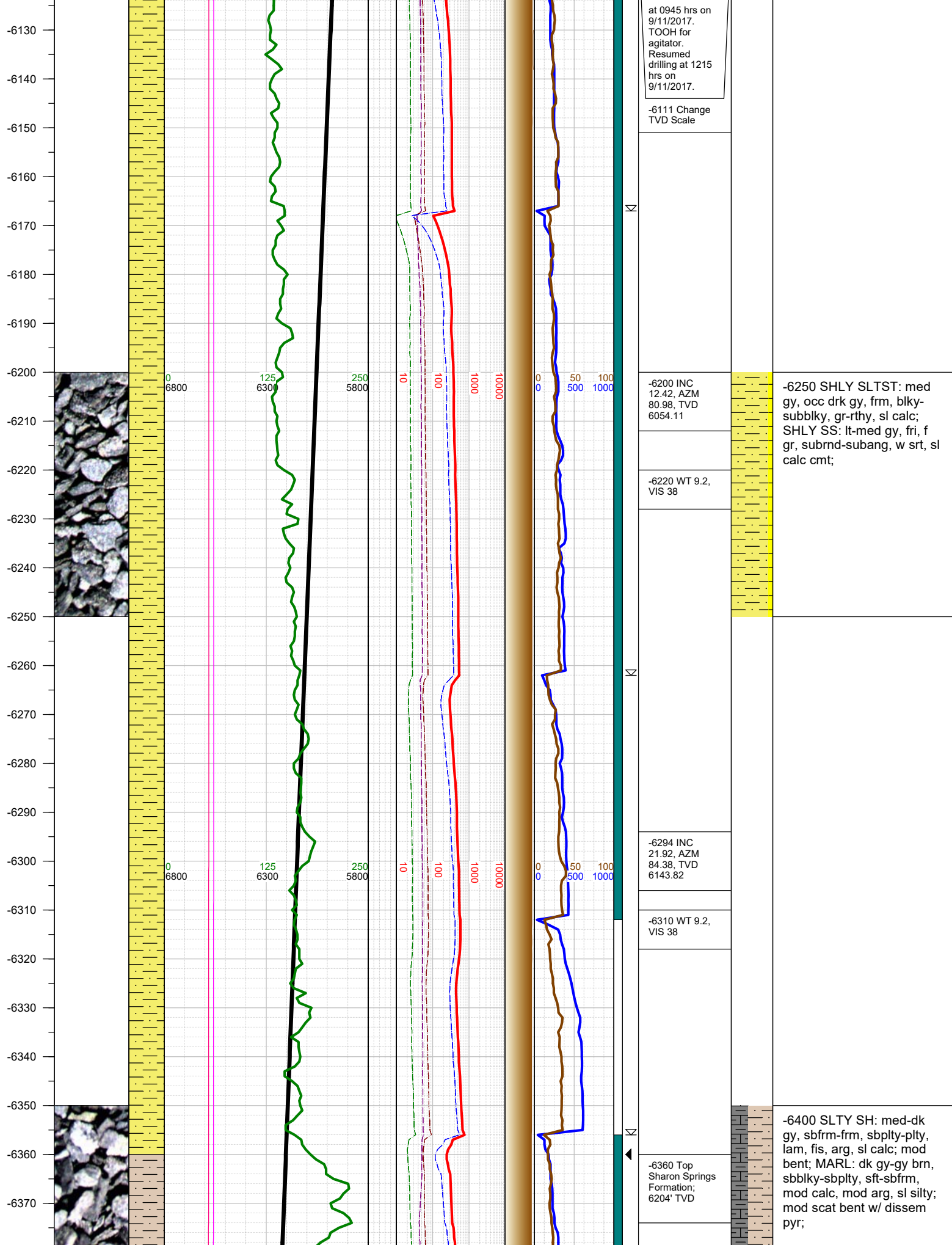
COUNTY: Weld  
STATE: Colorado  
GROUND ELEVATION: 4876'  
KELLY BUSHING: 4901'  
DRILLING FLUID: OBM  
TVD VS. MD: 6835' / 11350'  
SPUD DATE: September 11, 2017  
TD DATE: September 12, 2017  
DEPTHS LOGGED: 6000' - 11350'  
DATES LOGGED: September 11, 2017 - September 12, 2017  
GEOLOGISTS: Scott Snoy, Brian Whitfield  
SCALE: 5" = 100'

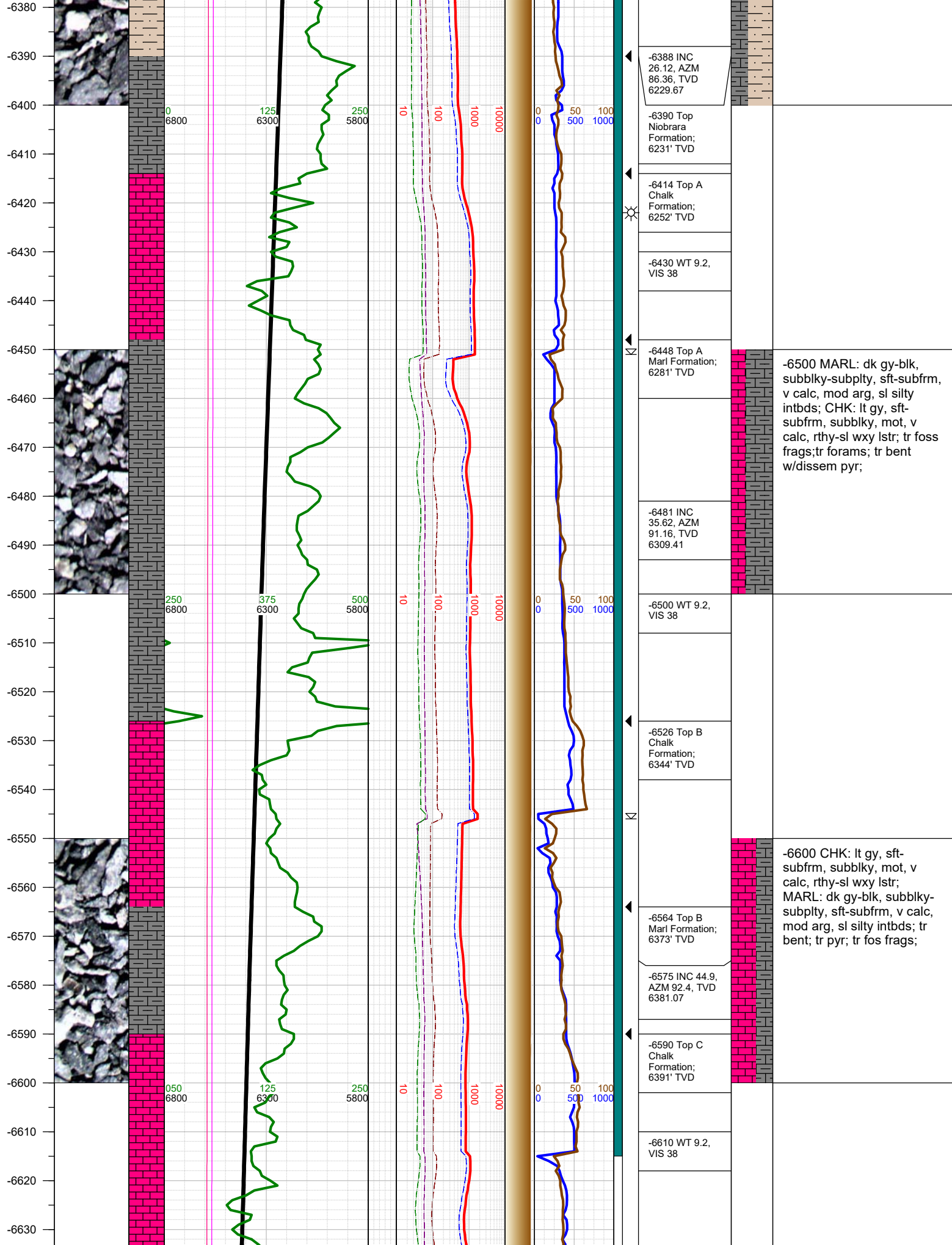
#### LEGEND



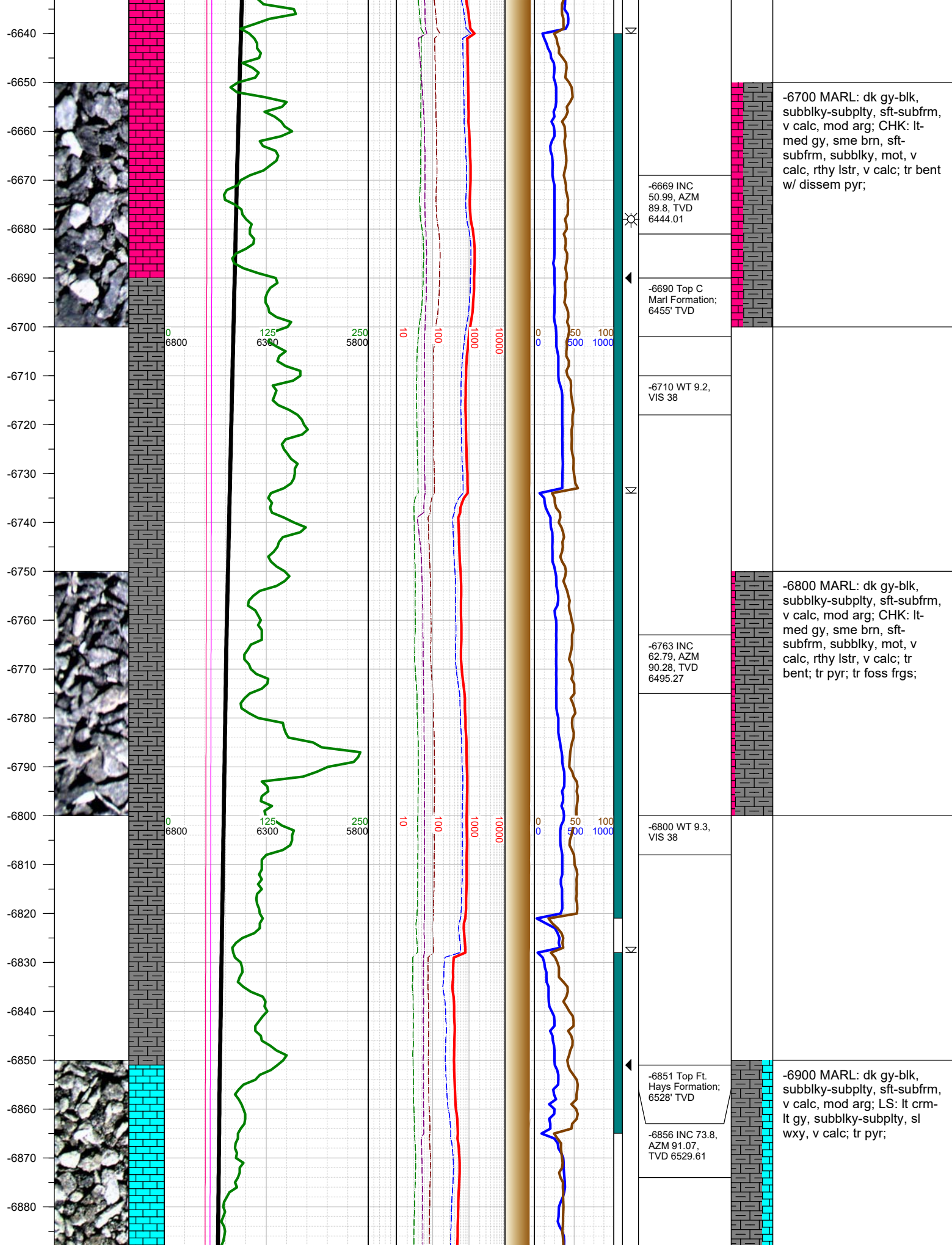
FORMATION  $\approx$  CONNECTION  $\Delta$  MIDNIGHT NEW BIT GAS SHOW FAULT

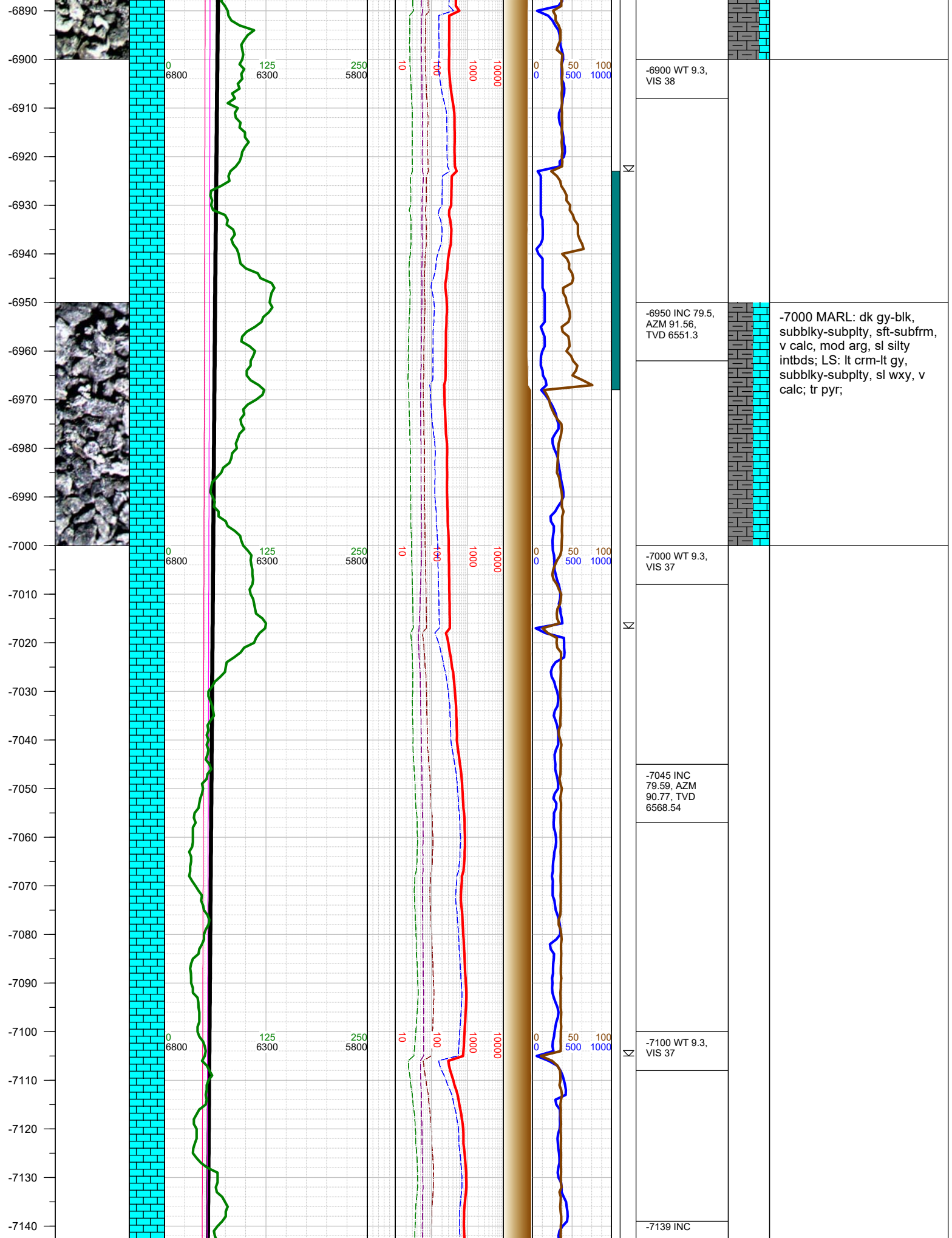


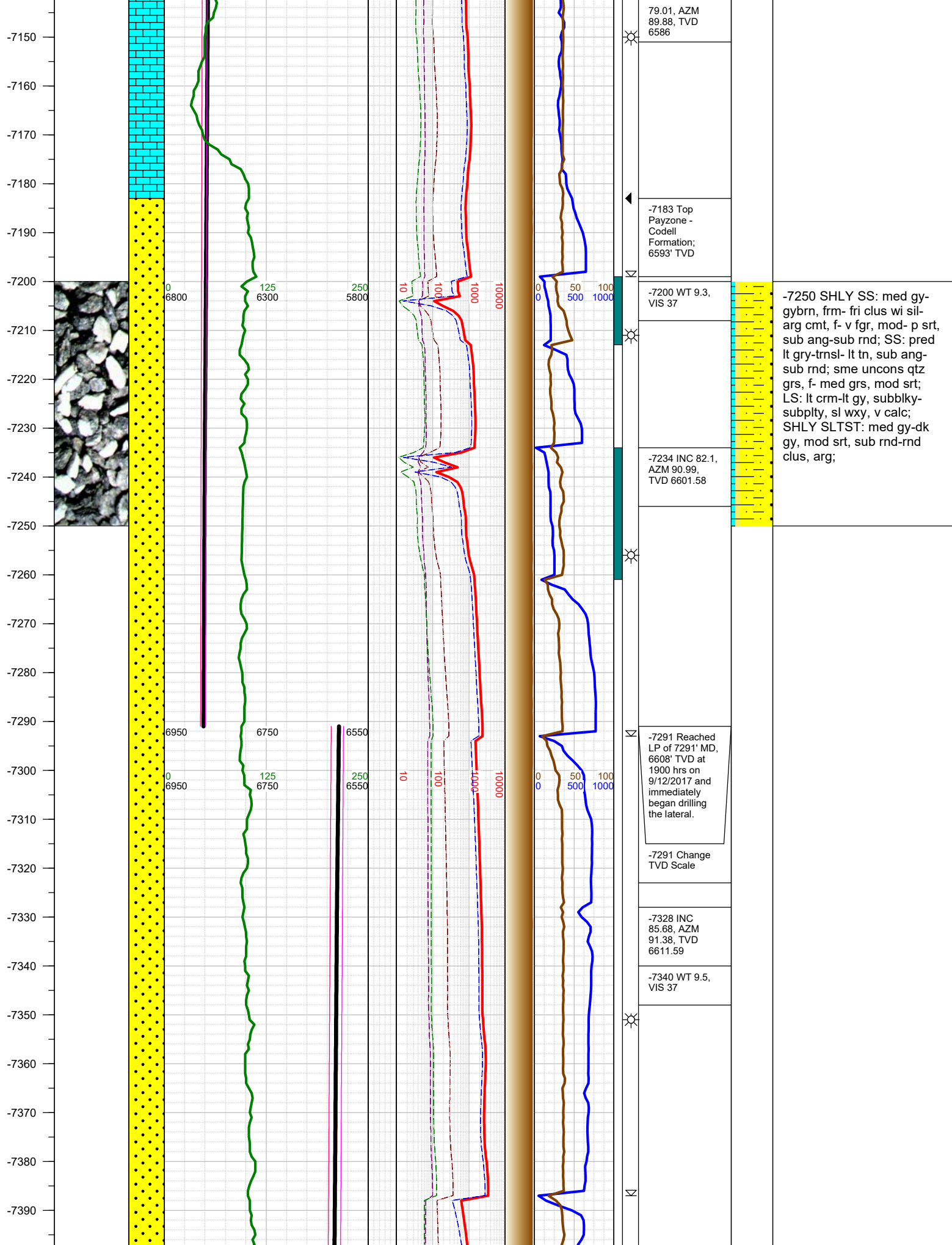




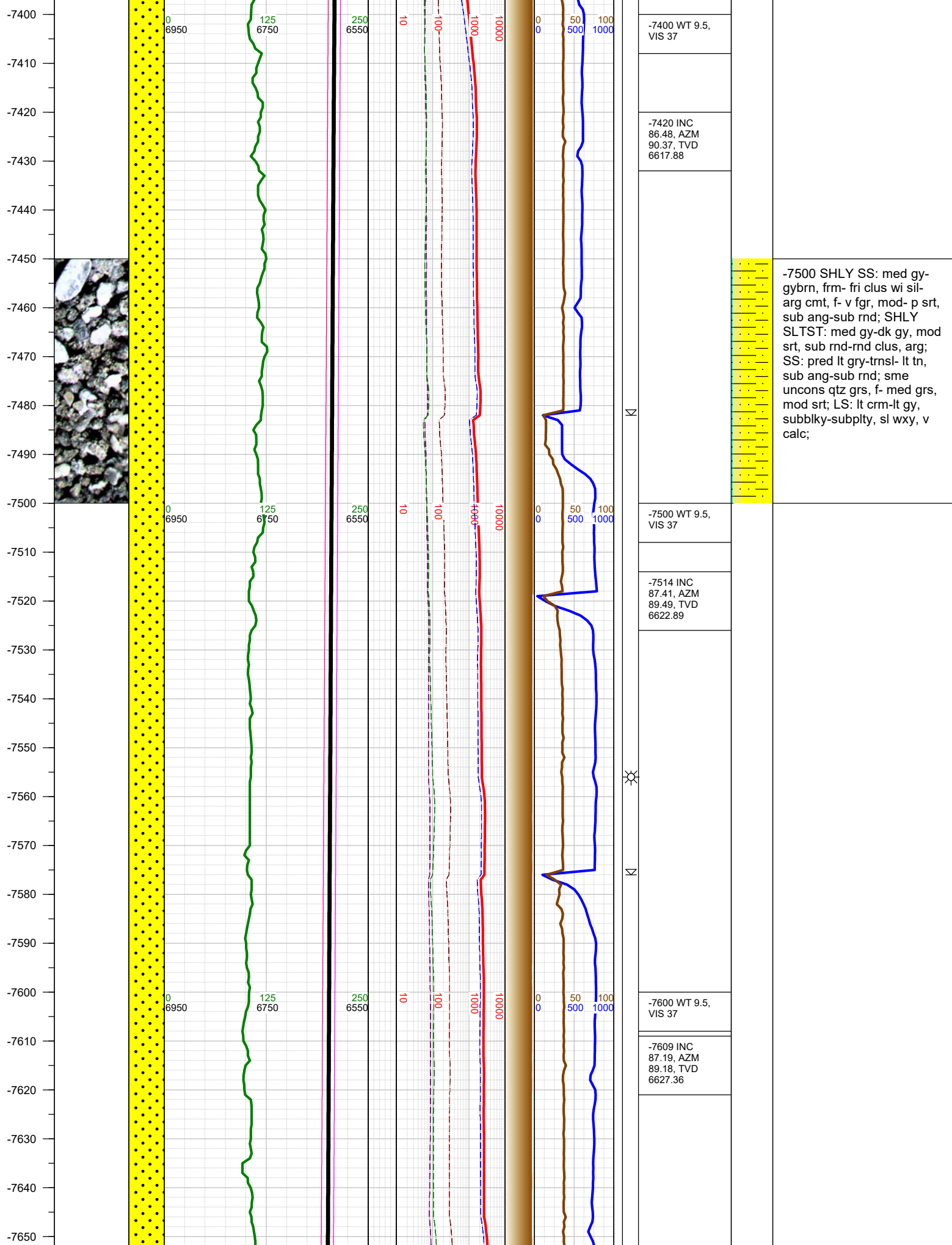




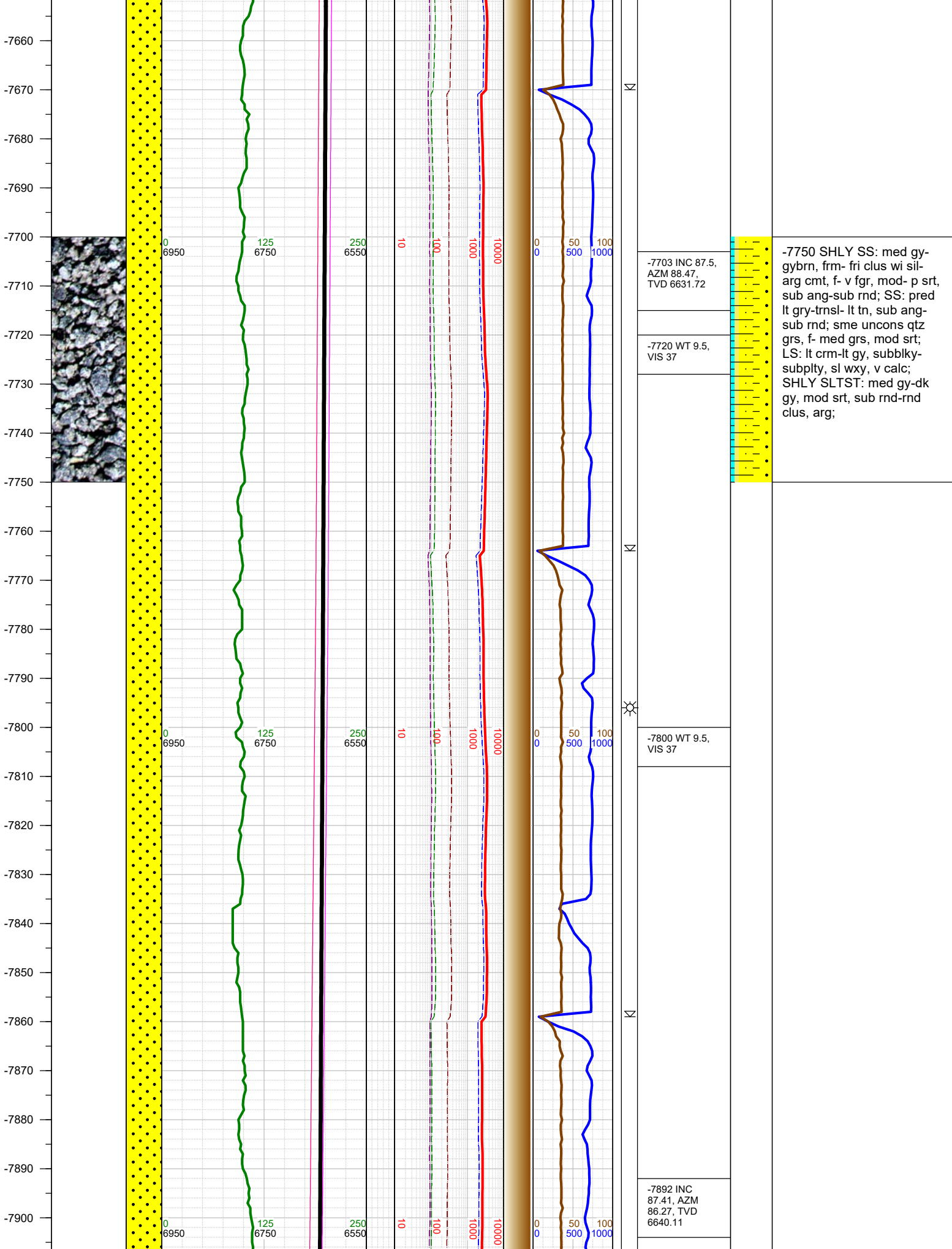








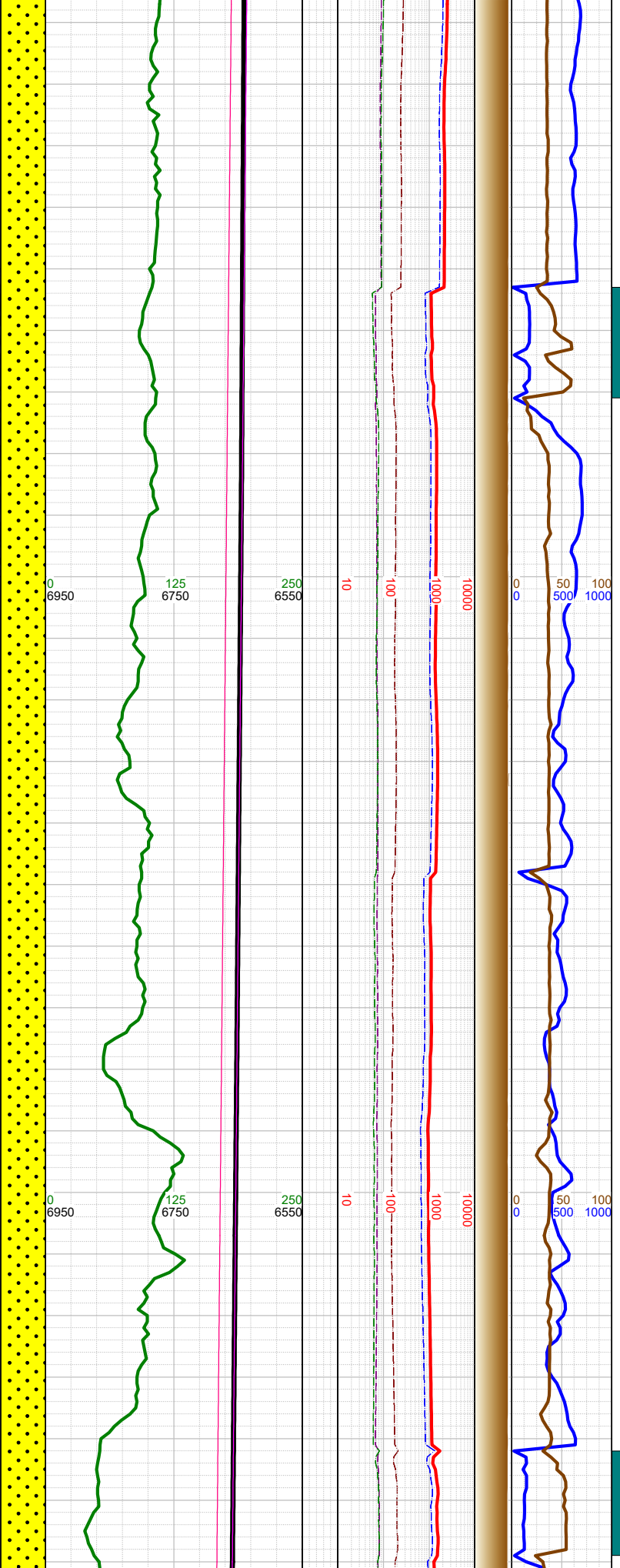
-7500 SHLY SS: med gy-gybrn, frm- fri clus wi sil-arg cmt, f- v fgr, mod- p srt, sub ang-sub rnd; SHLY SLTST: med gy-dk gy, mod srt, sub rnd-rnd clus, arg; SS: pred lt gry-trnsl- lt tn, sub ang-sub rnd; sme uncons qtz grs, f- med grs, mod srt; LS: lt crm-lt gy, subblky-subplty, sl wxy, v calc;



-7750 SHLY SS: med gy-gybrn, frm- fri clus wi sil-arg cmt, f- v fgr, mod- p srt, sub ang-sub rnd; SS: pred lt gry-trnsl- lt tn, sub ang-sub rnd; sme uncons qtz grs, f- med grs, mod srt; LS: lt crm-lt gy, subblky-subply, sl wxy, v calc; SHLY SLTST: med gy-dk gy, mod srt, sub rnd-rnd clus, arg;



-7910  
-7920  
-7930  
-7940  
-7950  
-7960  
-7970  
-7980  
-7990  
-8000  
-8010  
-8020  
-8030  
-8040  
-8050  
-8060  
-8070  
-8080  
-8090  
-8100  
-8110  
-8120  
-8130  
-8140  
-8150  
-8160



-7910 WT 9.5,  
VIS 37

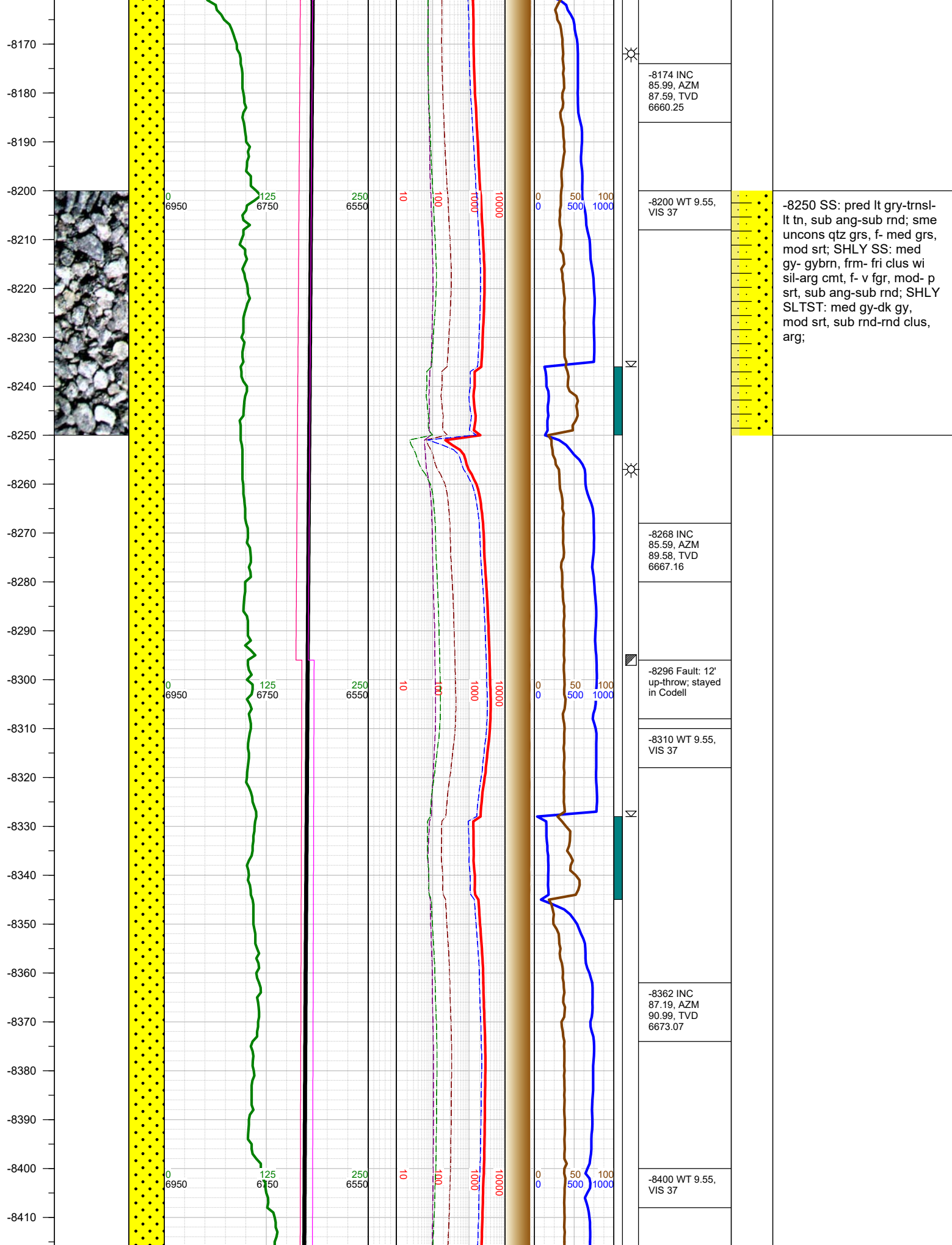
-7986 INC  
86.61, AZM  
89.88, TVD  
6645.01

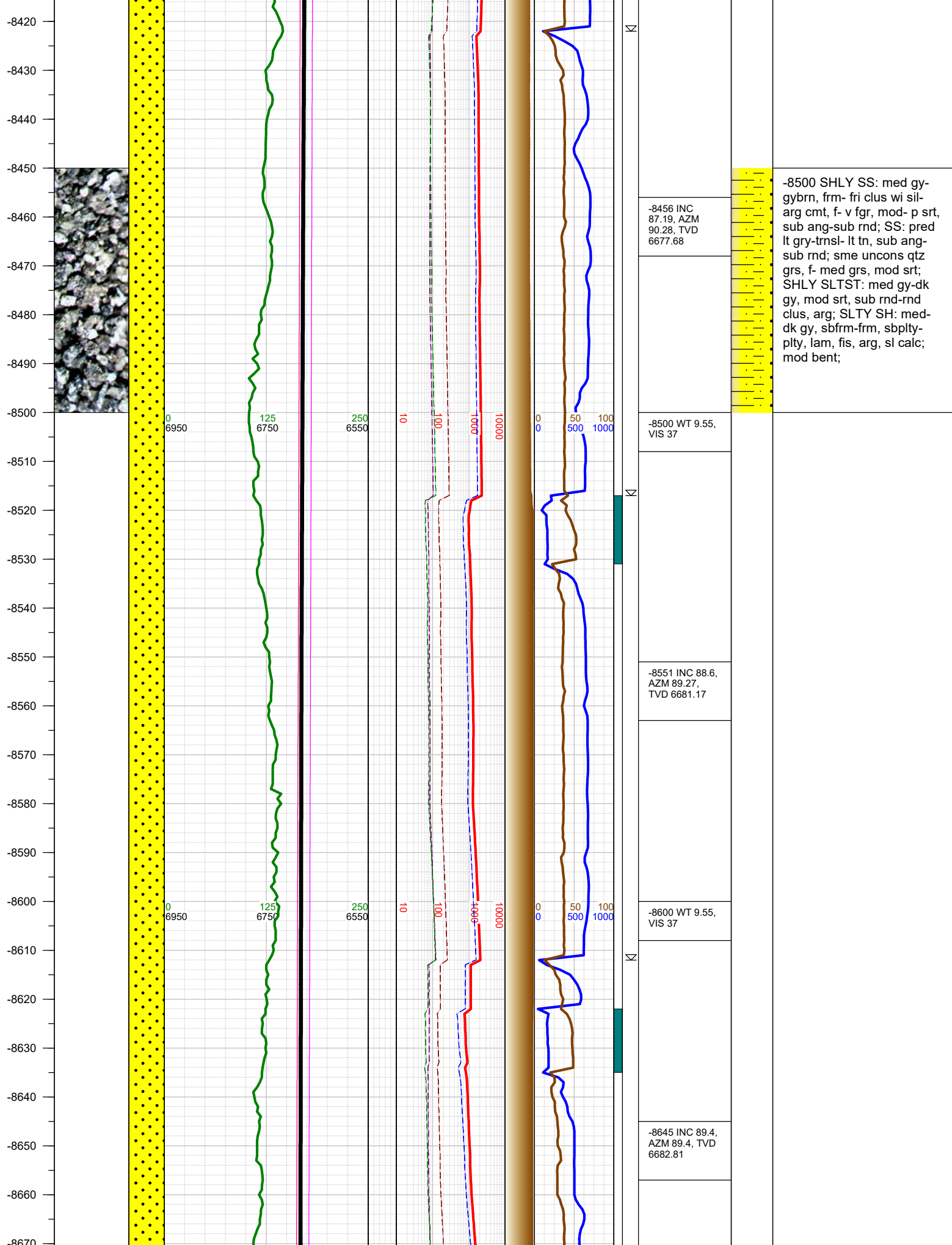
-8000 WT 9.55,  
VIS 37

-8080 INC 84.4,  
AZM 88.96,  
TVD 6652.38

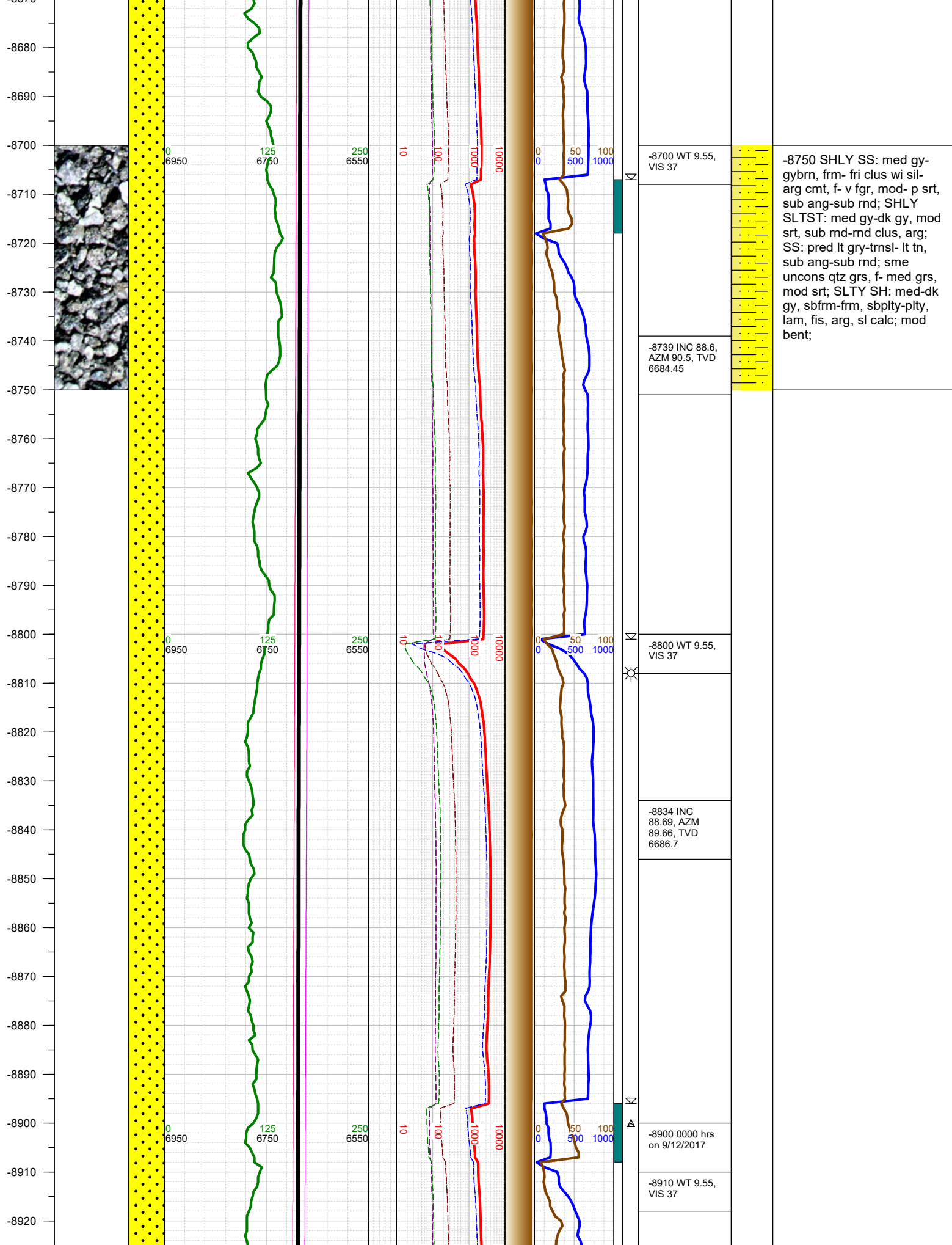
-8100 WT 9.55,  
VIS 37

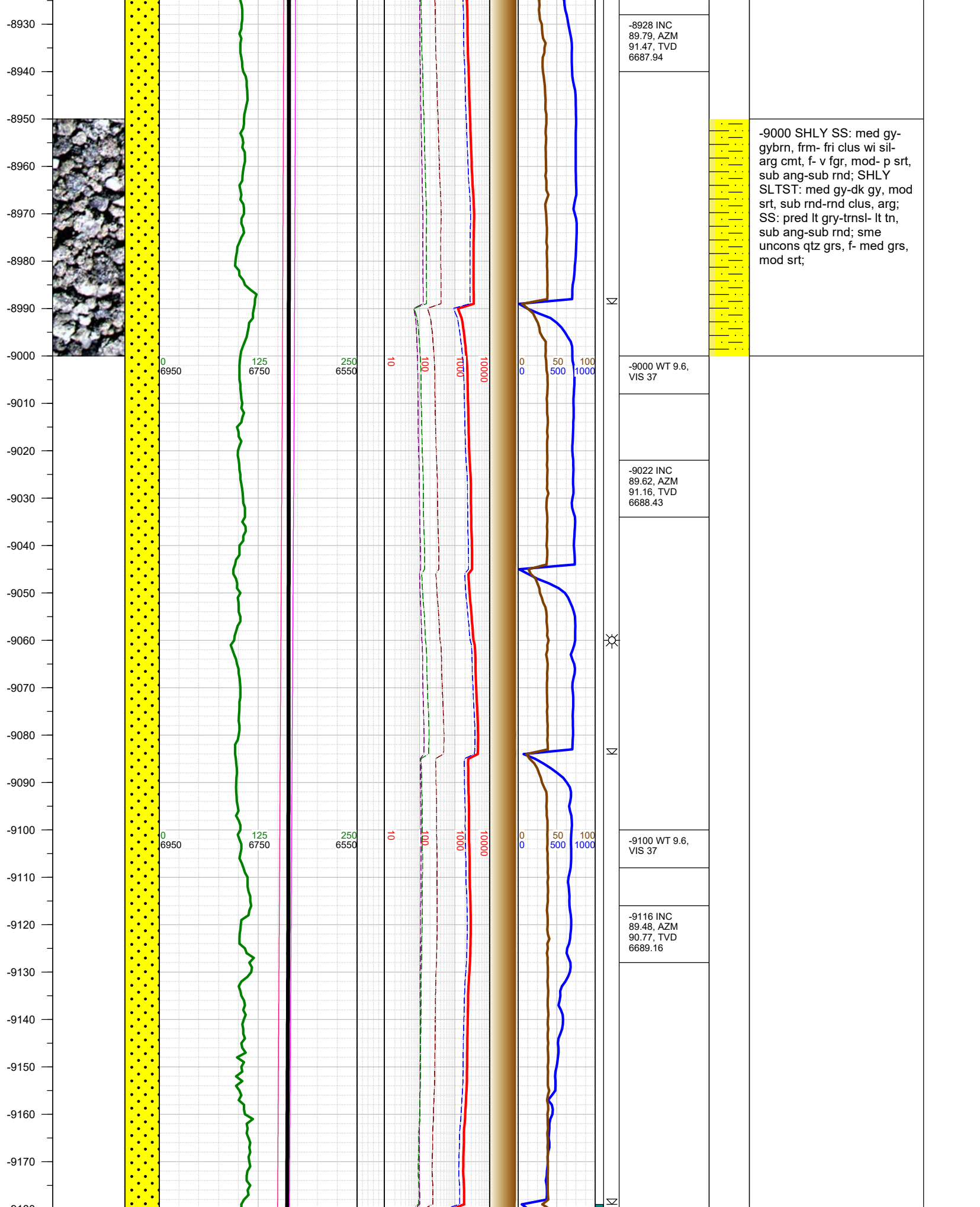
-8000 SHLY SS: med gy-  
gybrn, frm- fri clus wi sil-  
arg cmt, f- v fgr, mod- p srt,  
sub ang-sub rnd; SHLY  
SLTST: med gy-dk gy, mod  
srt, sub rnd-rnd clus, arg;  
SS: pred lt gry-trnsl- lt tn,  
sub ang-sub rnd; sme  
uncons qtz grs, f- med grs,  
mod srt; MARL: dk gy-blk,  
subblky-subplty, sft-subfrm,  
v calc, mod arg, sl silty  
intbds; LS: lt crm-lt gy,  
subblky-subplty, sl wxy, v  
calc; tr pyr;

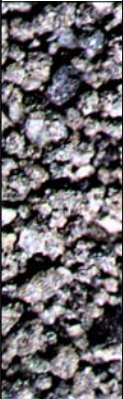
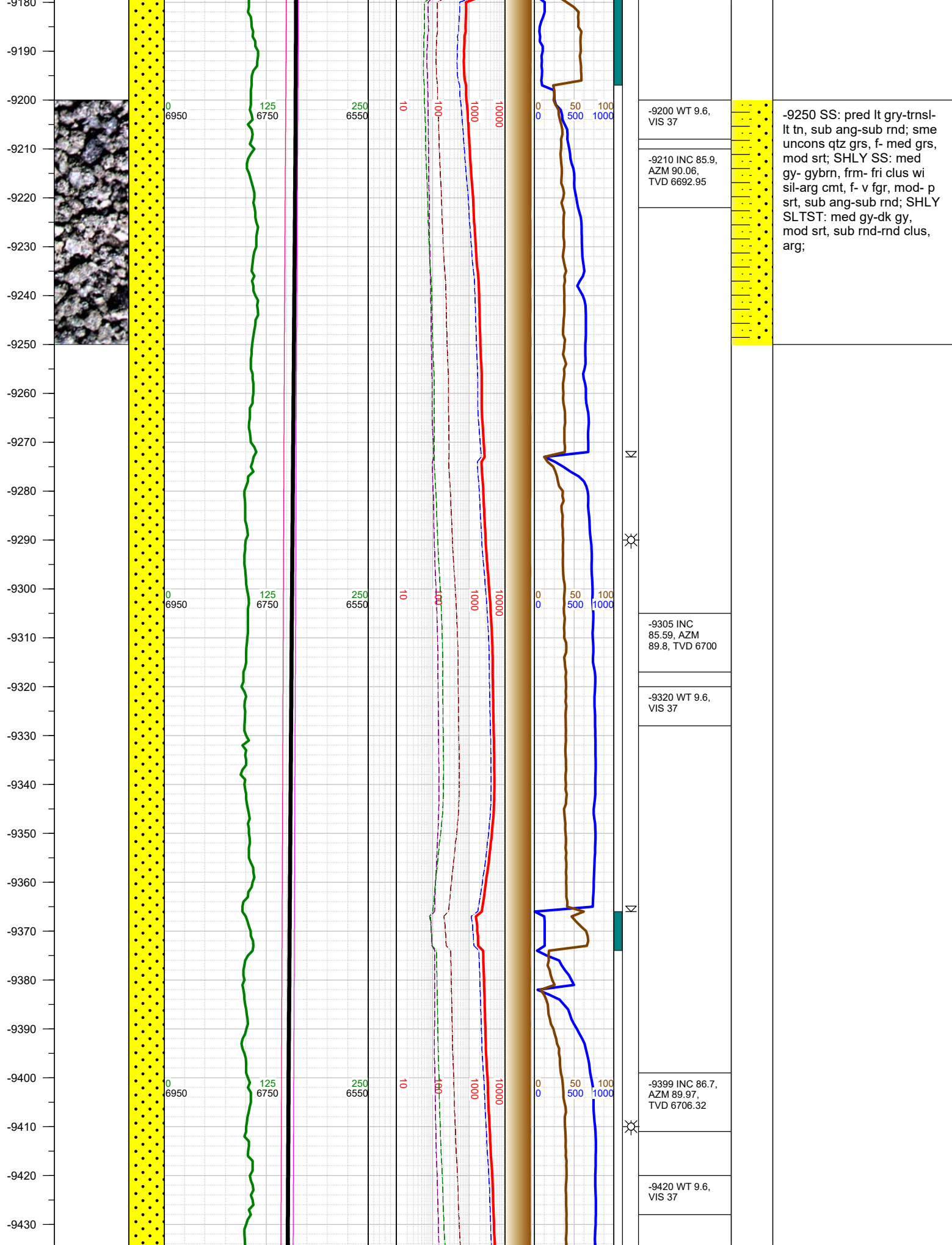












-9200 WT 9.6,  
VIS 37

-9210 INC 85.9,  
AZM 90.06,  
TVD 6692.95

-9305 INC  
85.59, AZM  
89.8, TVD 6700

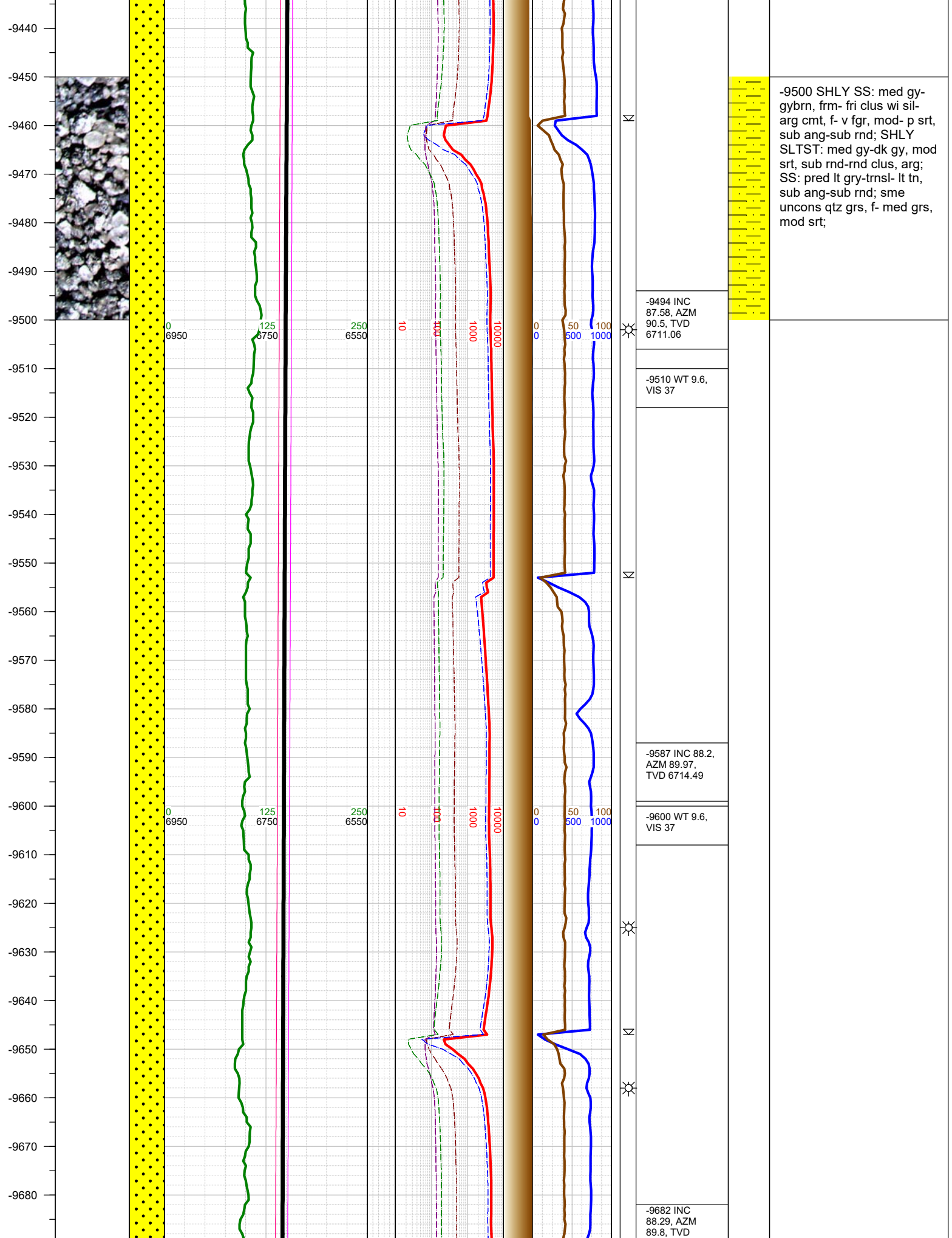
-9320 WT 9.6,  
VIS 37

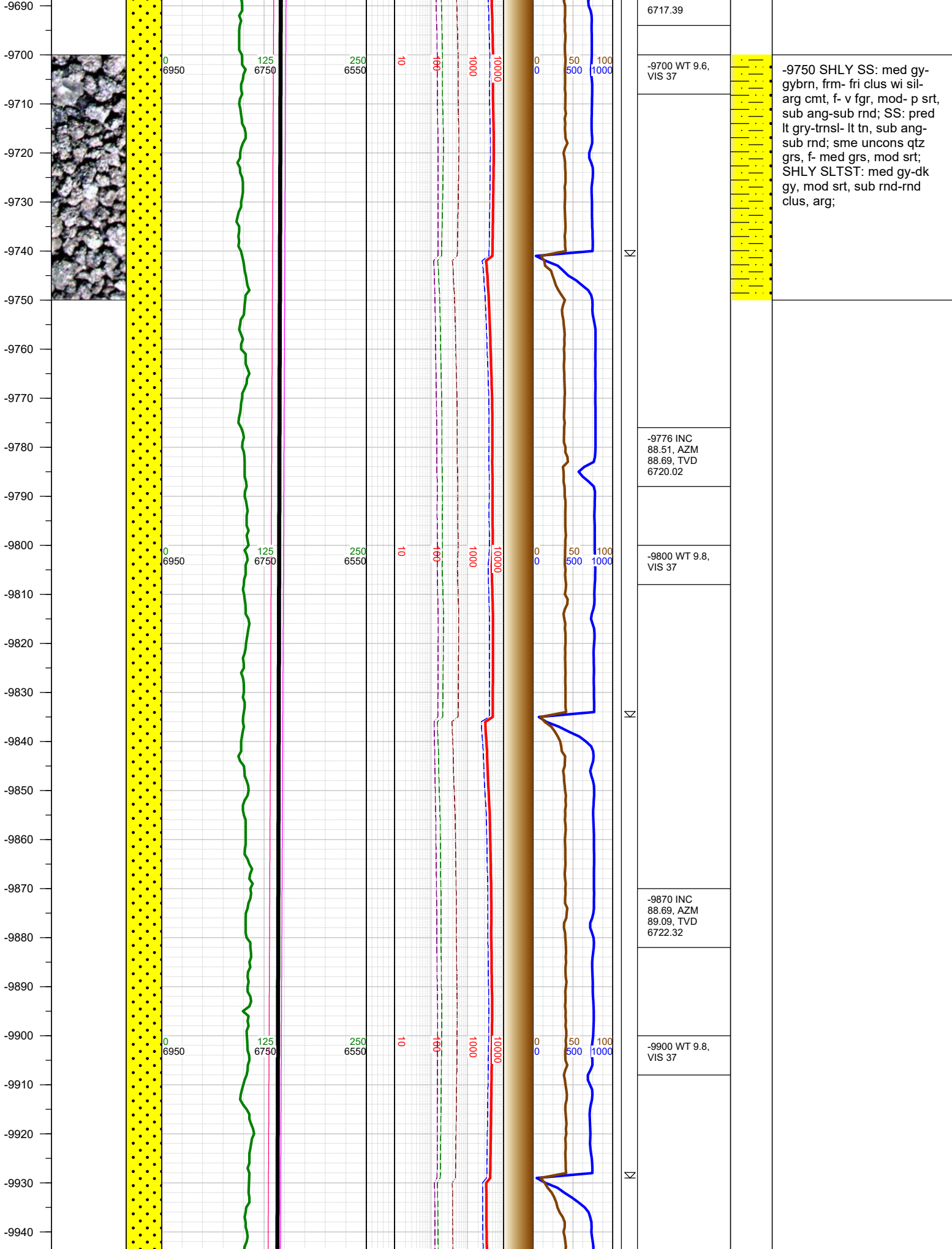
-9399 INC 86.7,  
AZM 89.97,  
TVD 6706.32

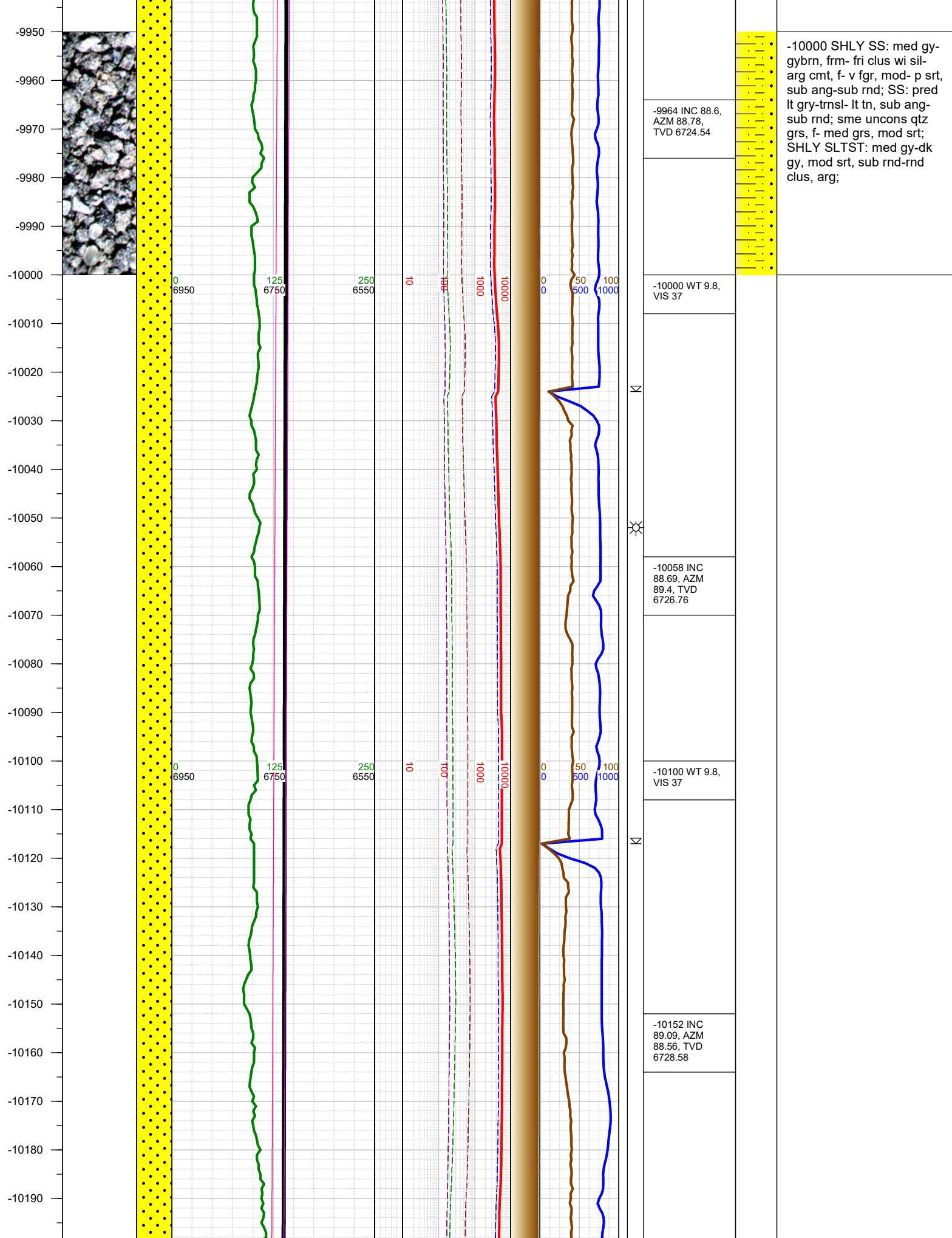
-9420 WT 9.6,  
VIS 37

-9250 SS: pred lt gry-trnsl-  
lt tn, sub ang-sub rnd; sme  
uncons qtz grs, f- med grs,  
mod srt; SHLY SS: med  
gy- gybrn, frm- fri clus wi  
sil-arg cmt, f- v fgr, mod- p  
srt, sub ang-sub rnd; SHLY  
SLTST: med gy-dk gy,  
mod srt, sub rnd-rnd clus,  
arg;

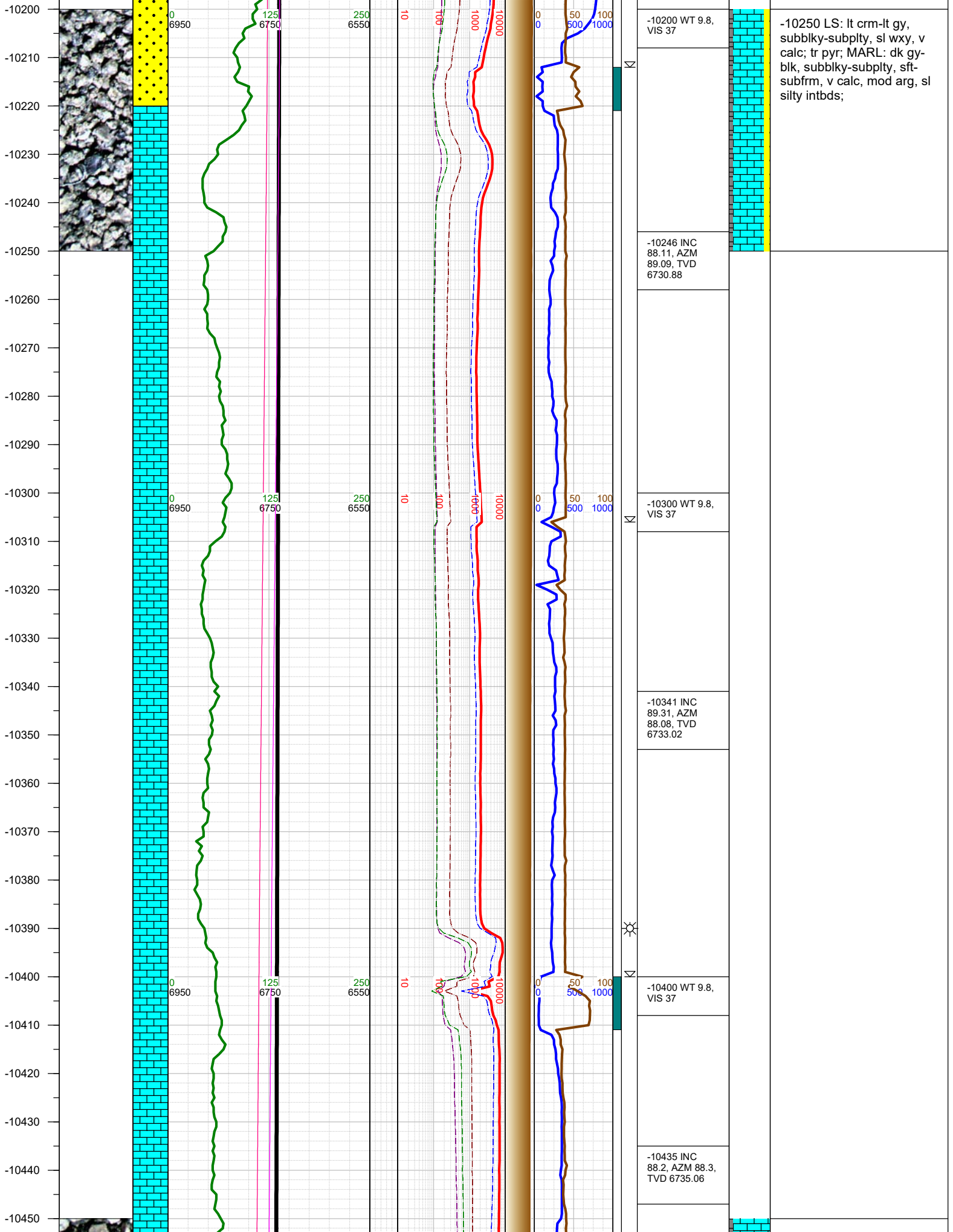












-10250 LS: lt crm-lt gy, subblky-subply, sl wxy, v calc; tr pyr; MARL: dk gy-blk, subblky-subply, sft-subfrm, v calc, mod arg, sl silty intbds;

