

OPERATOR: **Extraction Oil & Gas**

WELL NAME: **MLD 10**

FIELD NAME: DJ Basin - Wattenberg

DRILLING RIG: Patterson 346

API #: 05-123-44817

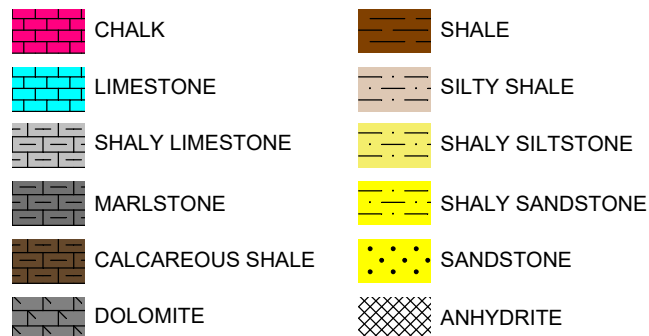
LAT/LONG: 40.303971, -104.996768  
SURFACE HOLE: NWNW S22-T4N-R68W, 802' FNL, 576' FWL  
BOTTOM HOLE: S22-T4N-R68W, 270' FNL, 460' FEL



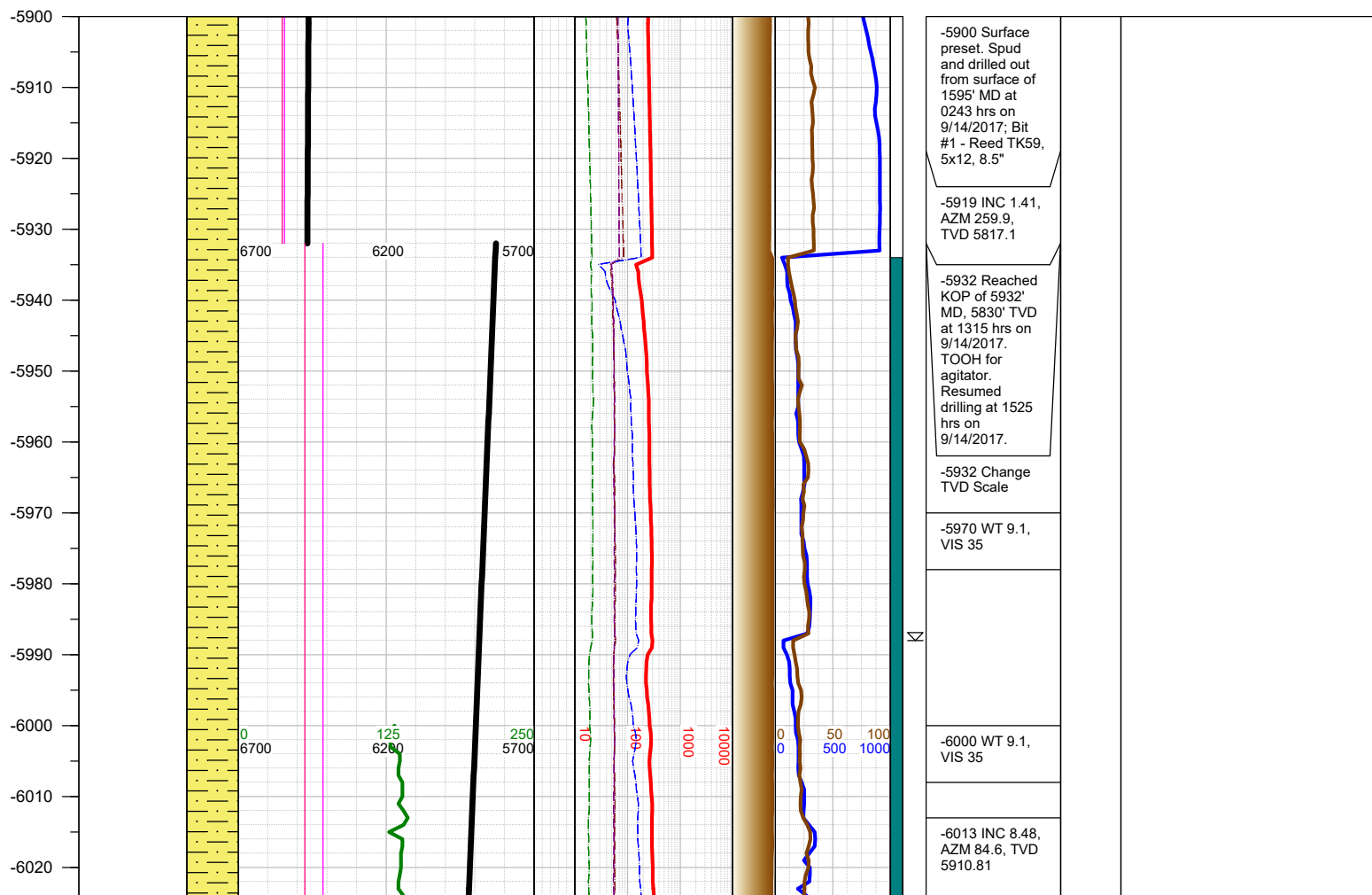
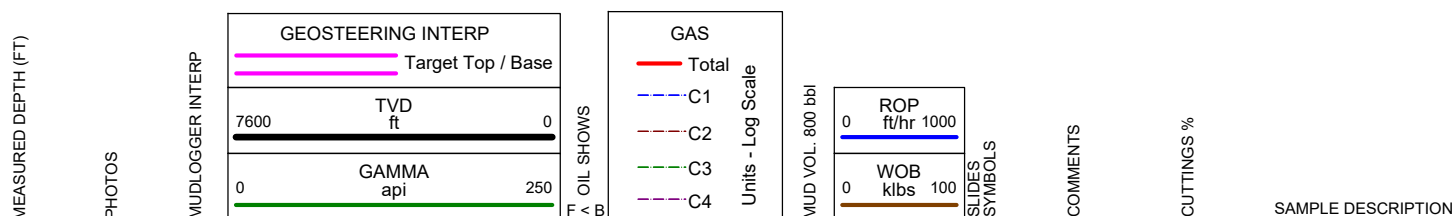
Earth Science Agency, LLC

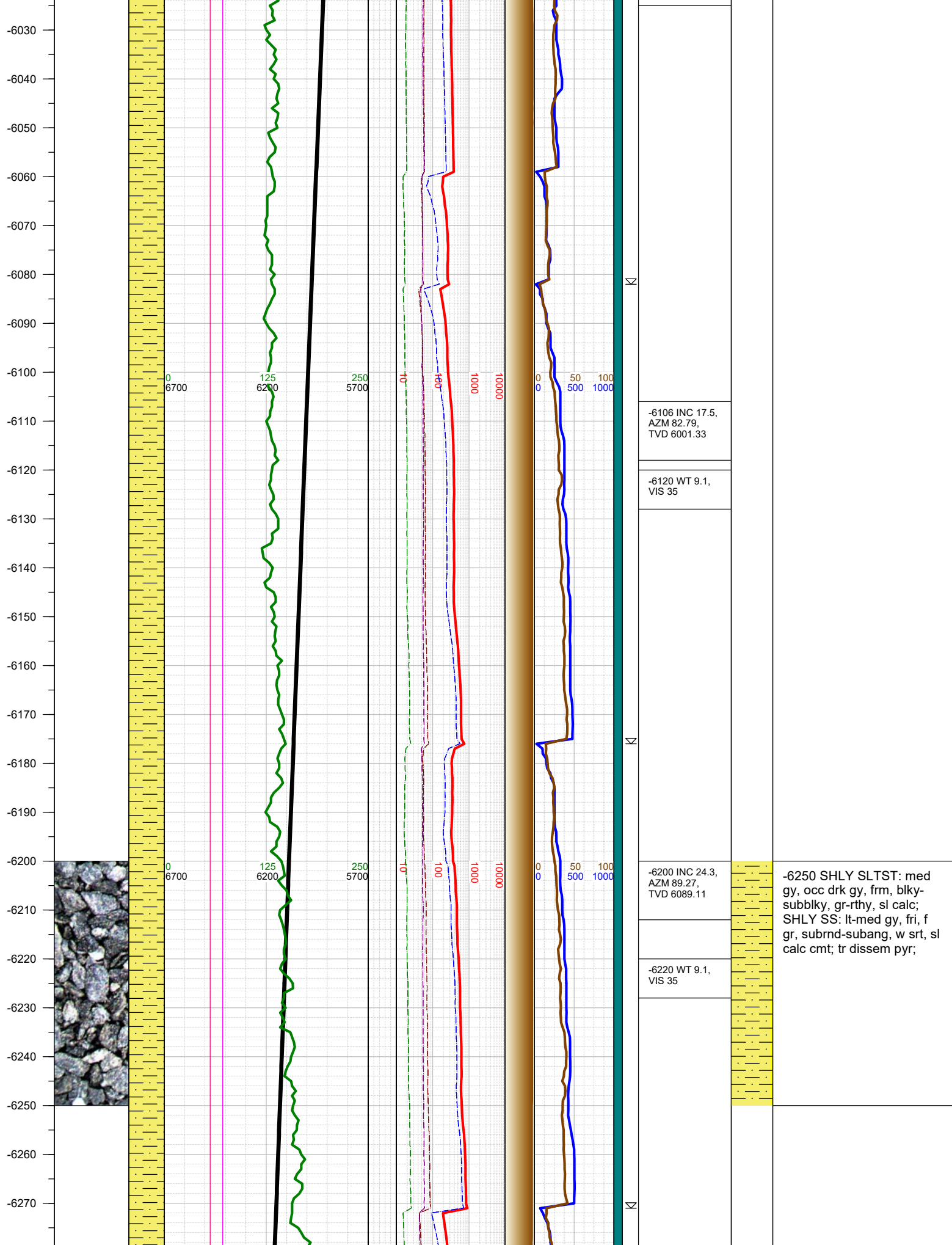
COUNTY: Weld  
STATE: Colorado  
GROUND ELEVATION: 4876'  
KELLY BUSHING: 4901'  
DRILLING FLUID: OBM  
TVD VS. MD: 6748' / 11203'  
SPUD DATE: September 14, 2017  
TD DATE: September 15, 2017  
DEPTHS LOGGED: 5900' - 11203'  
DATES LOGGED: September 14, 2017 - September 15, 2017  
GEOLOGISTS: Scott Snoy, Brian Whitfield  
SCALE: 5" = 100'

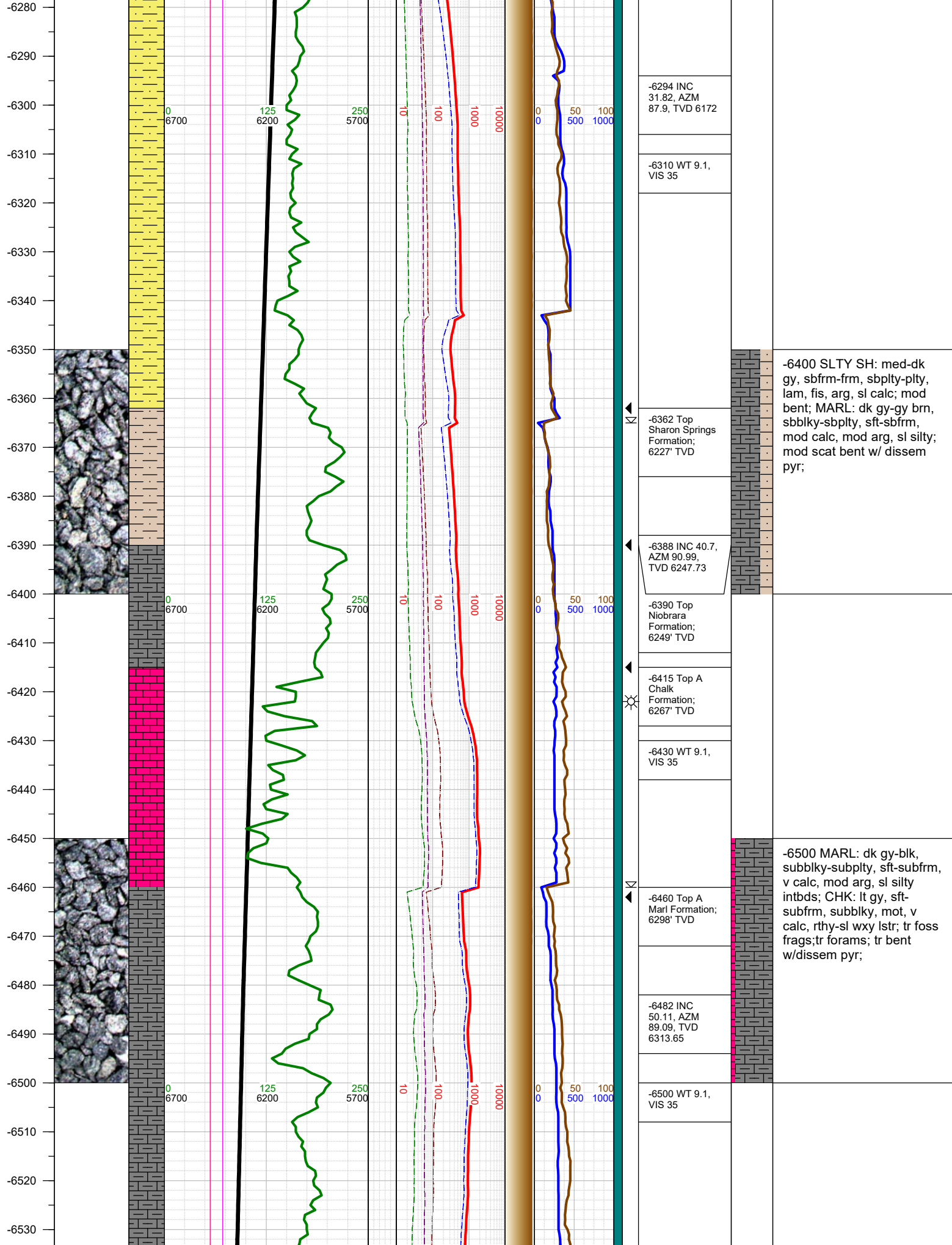
#### LEGEND



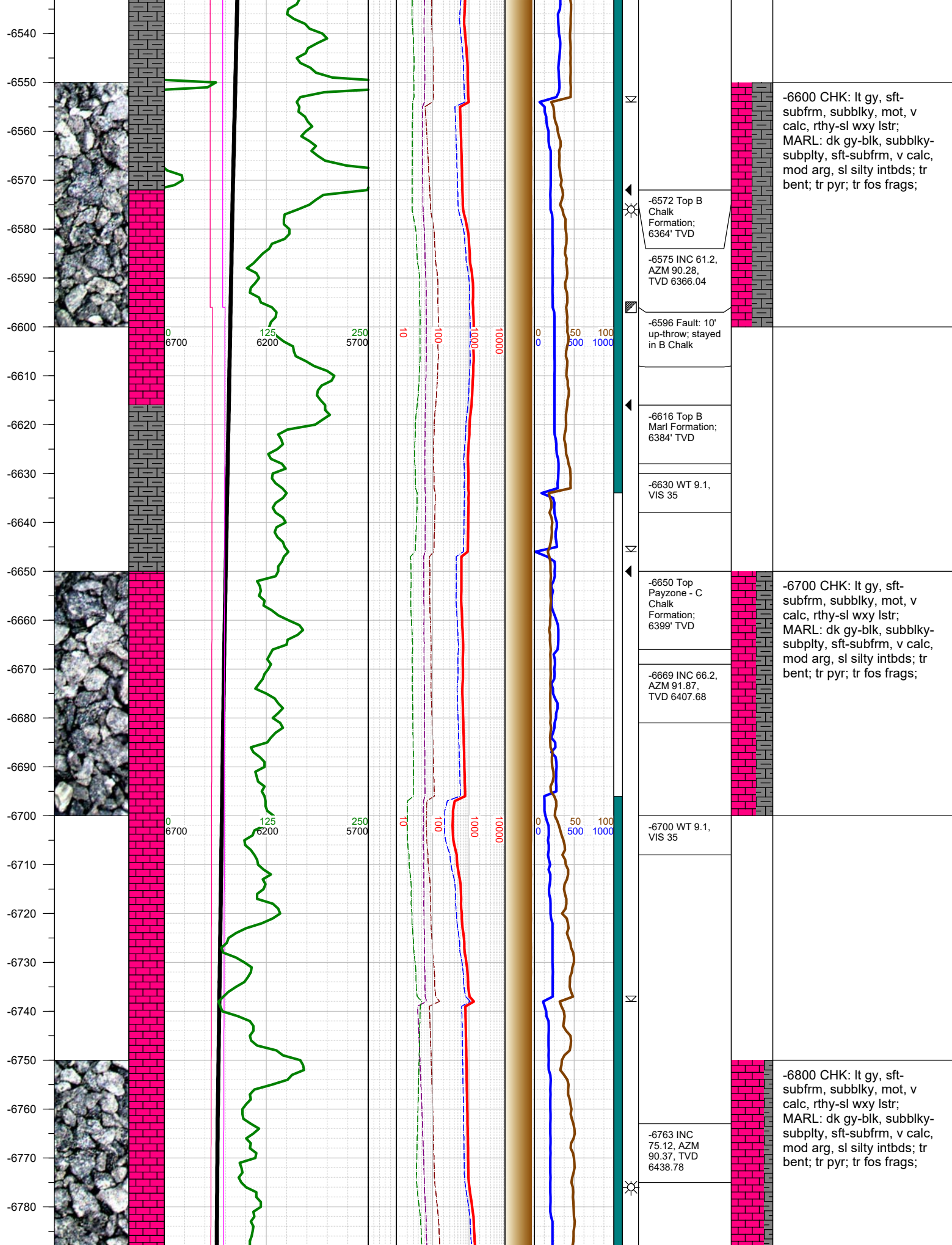
FORMATION CONNECTION MIDNIGHT NEW BIT GAS SHOW FAULT

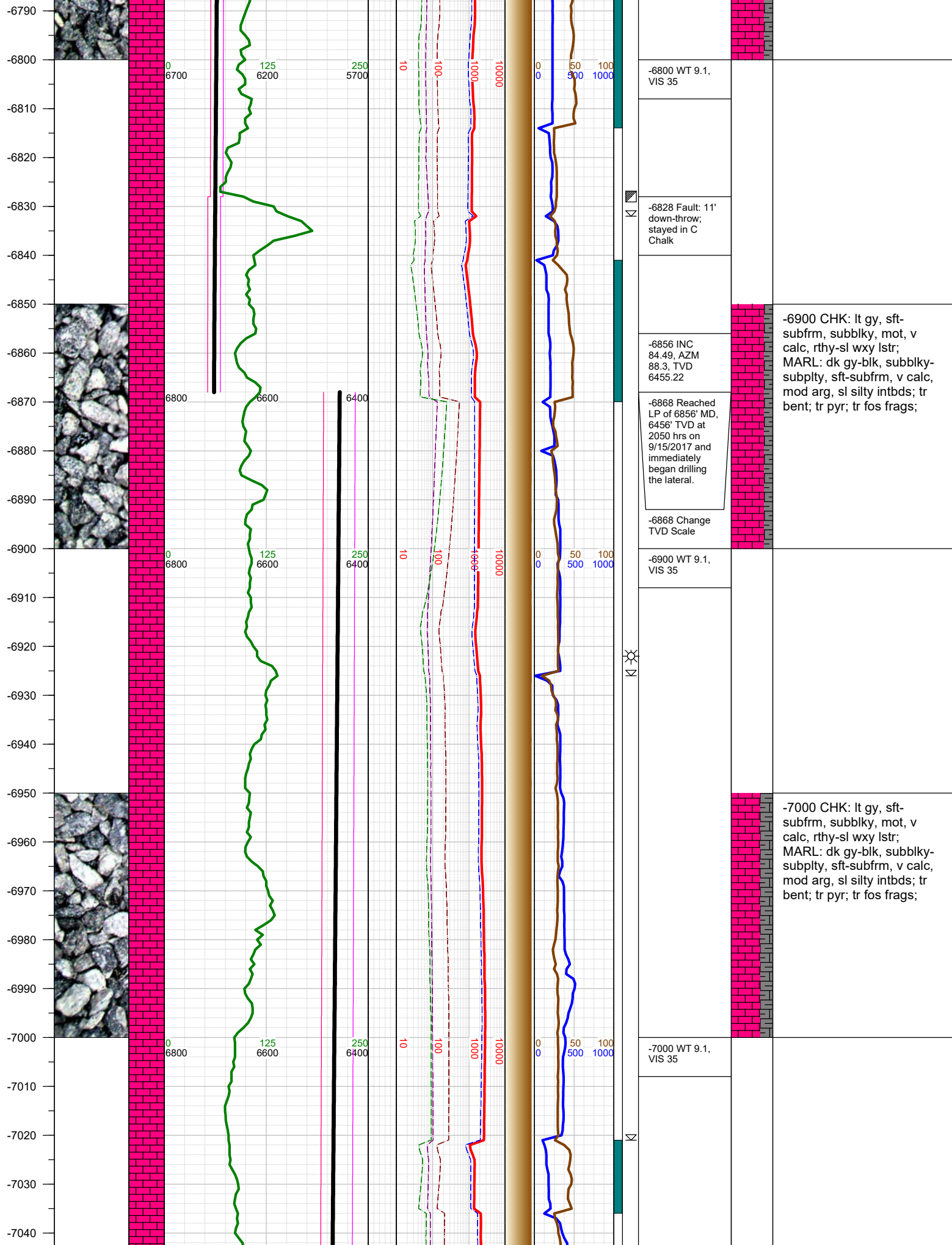






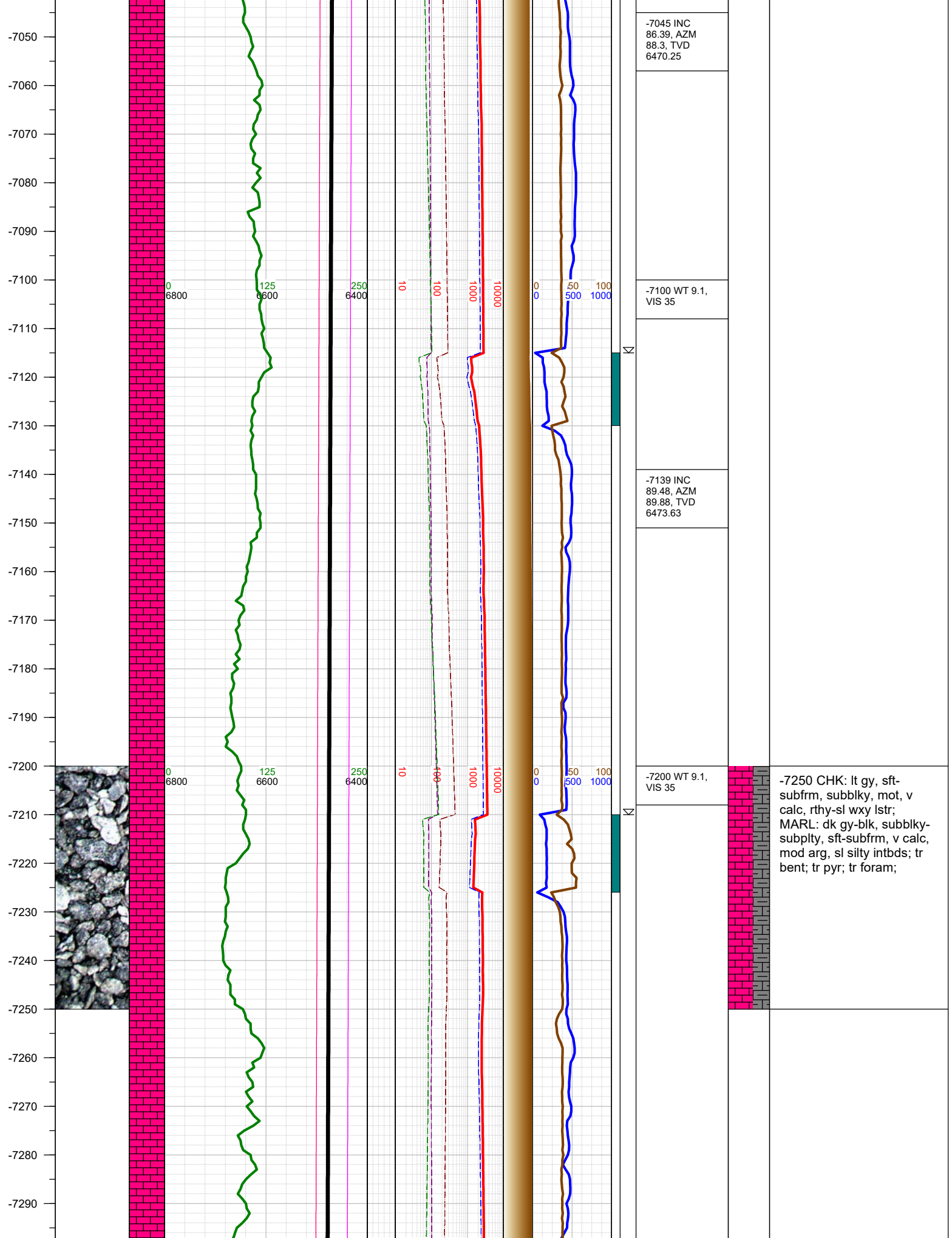




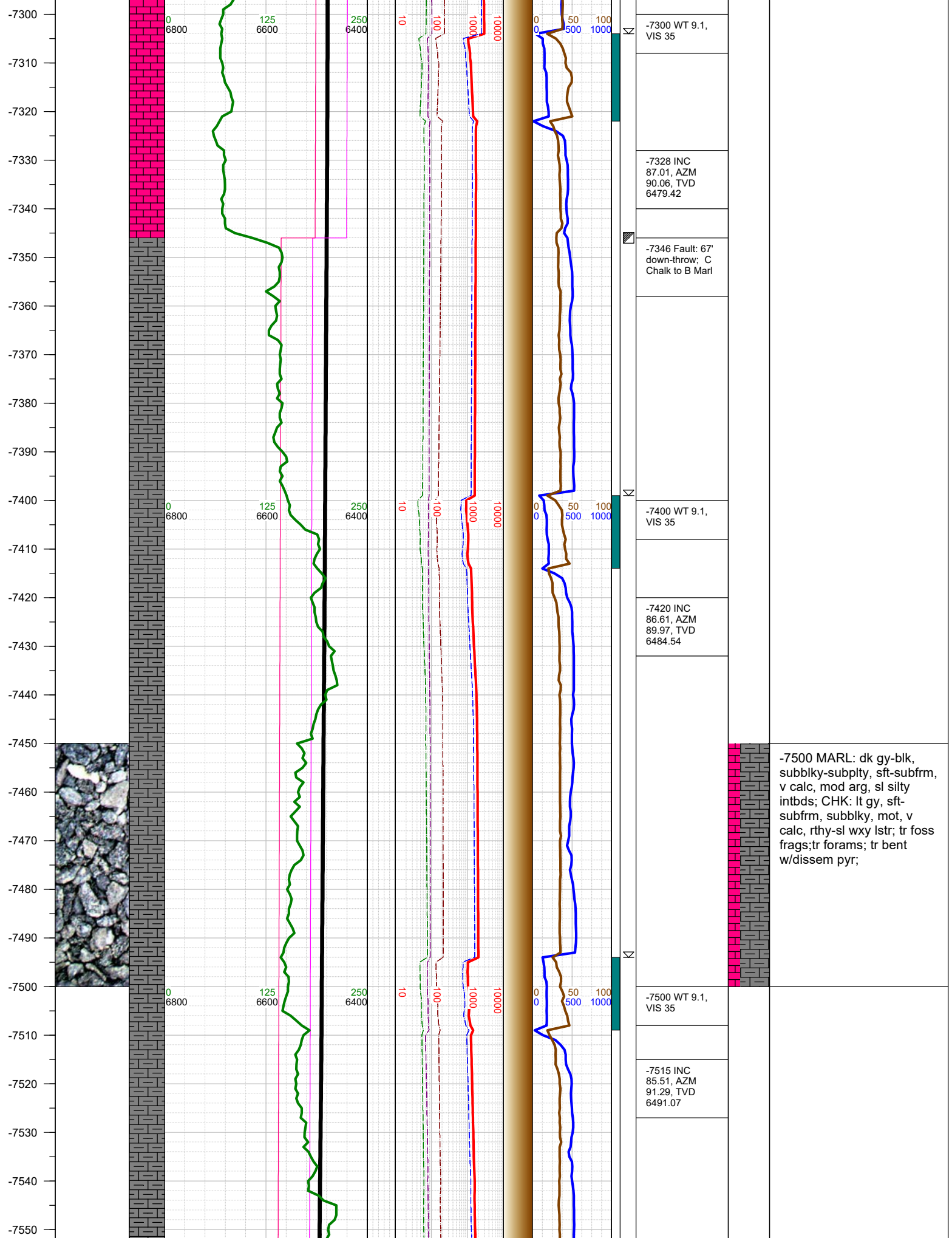


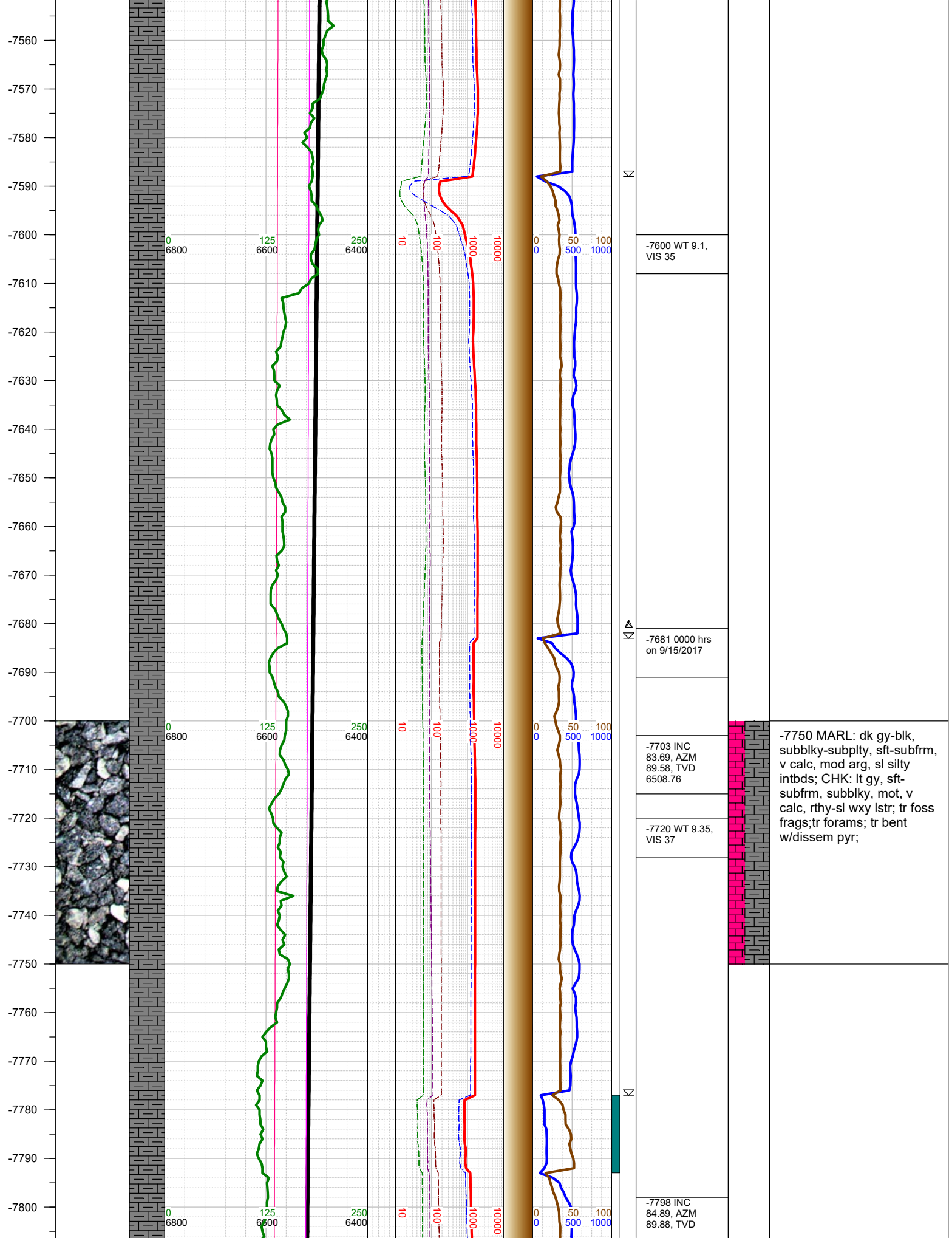
-6900 CHK: lt gy, sft-subfrm, subblky, mot, v calc, rthy-sl wxy lstr; MARL: dk gy-blk, subblky-subply, sft-subfrm, v calc, mod arg, sl silty intbds; tr bent; tr pyr; tr fos frags;

-7000 CHK: lt gy, sft-subfrm, subblky, mot, v calc, rthy-sl wxy lstr; MARL: dk gy-blk, subblky-subply, sft-subfrm, v calc, mod arg, sl silty intbds; tr bent; tr pyr; tr fos frags;

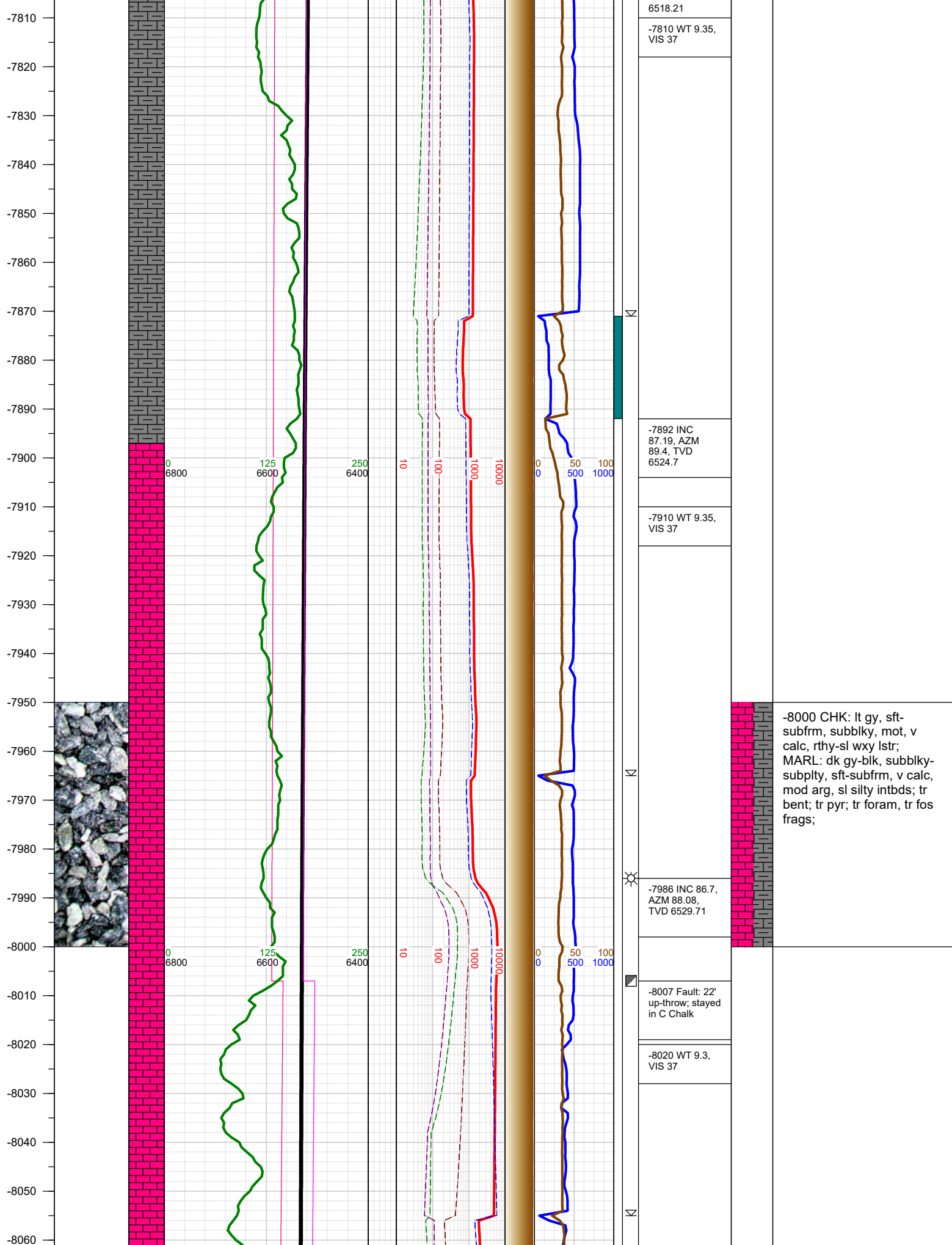


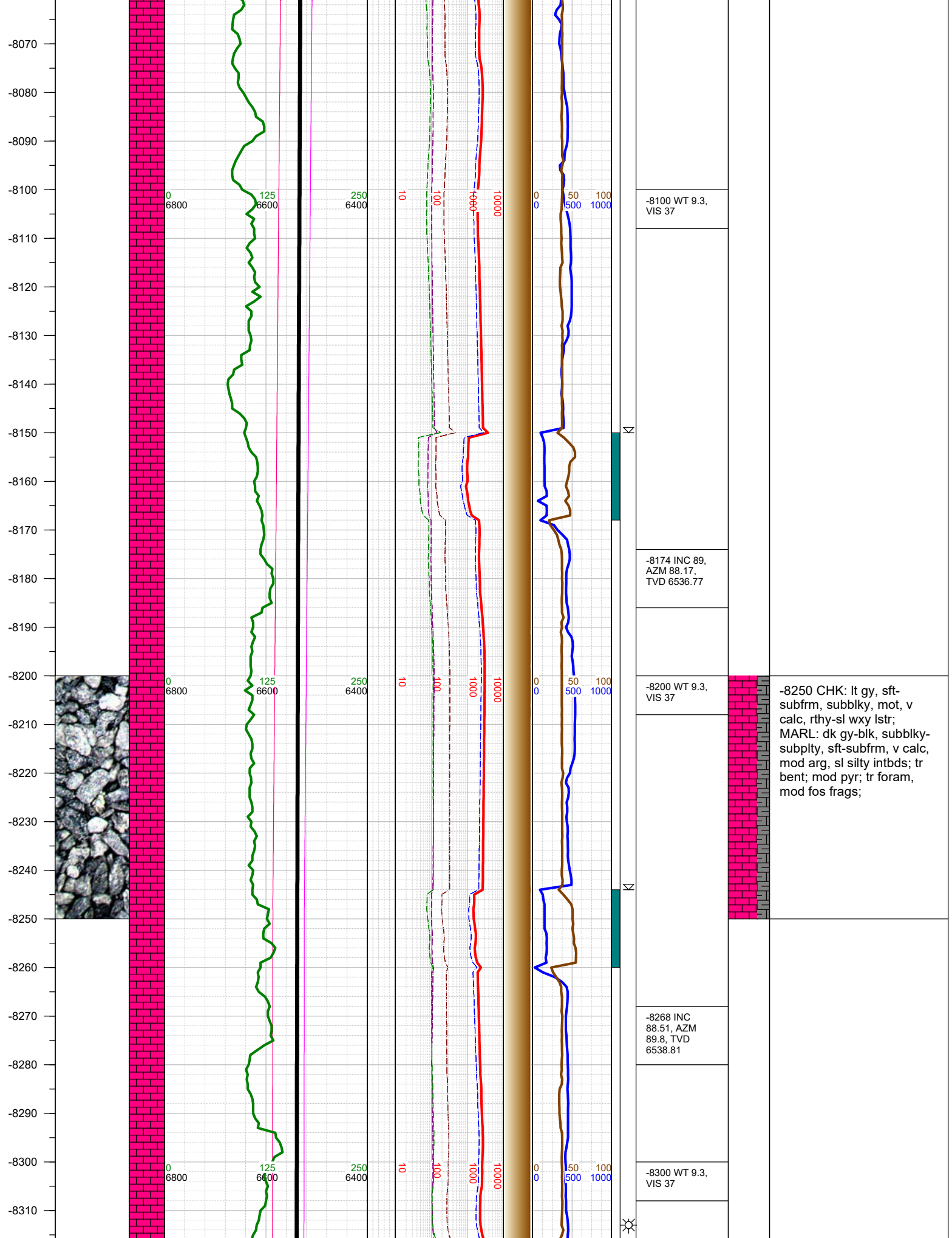


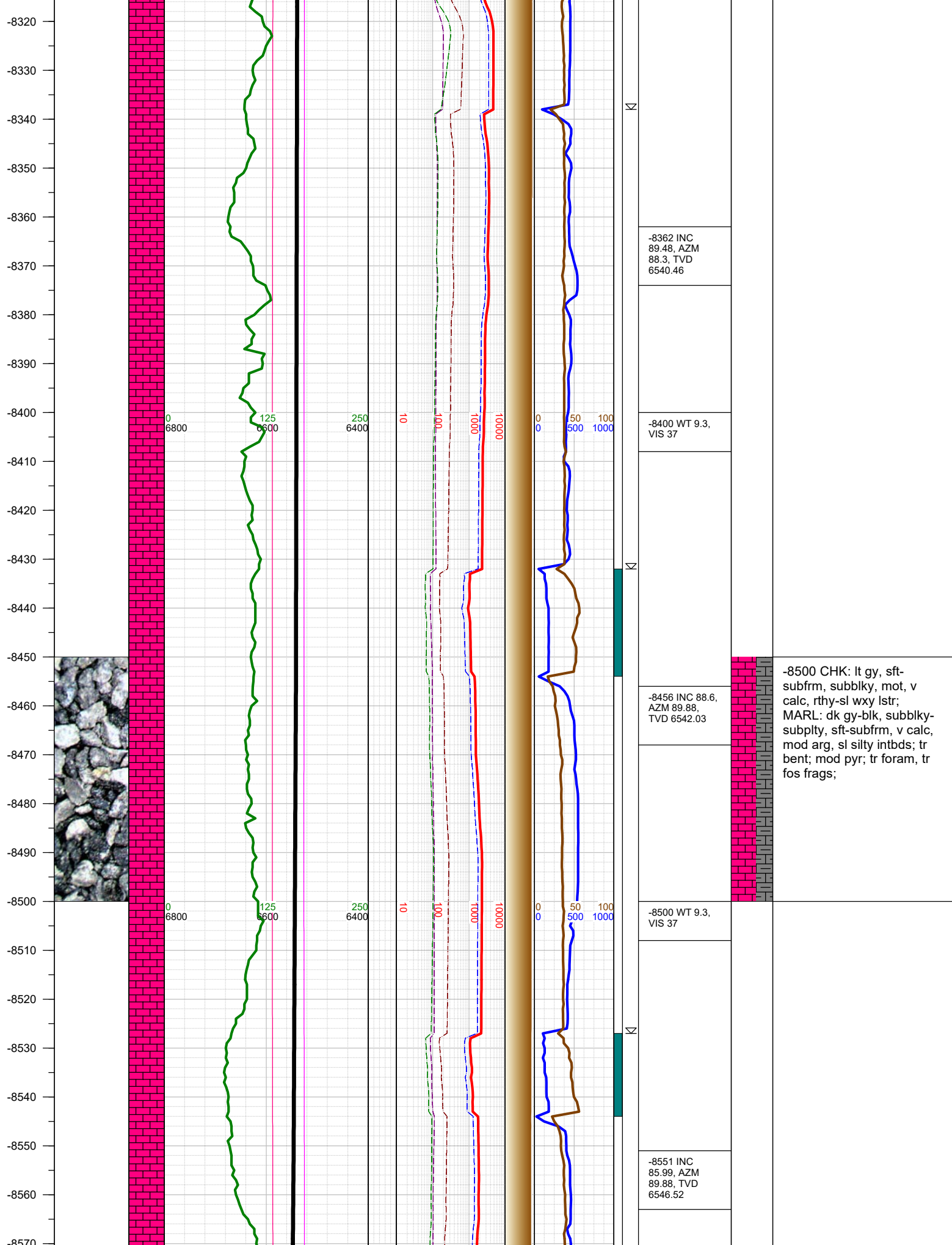




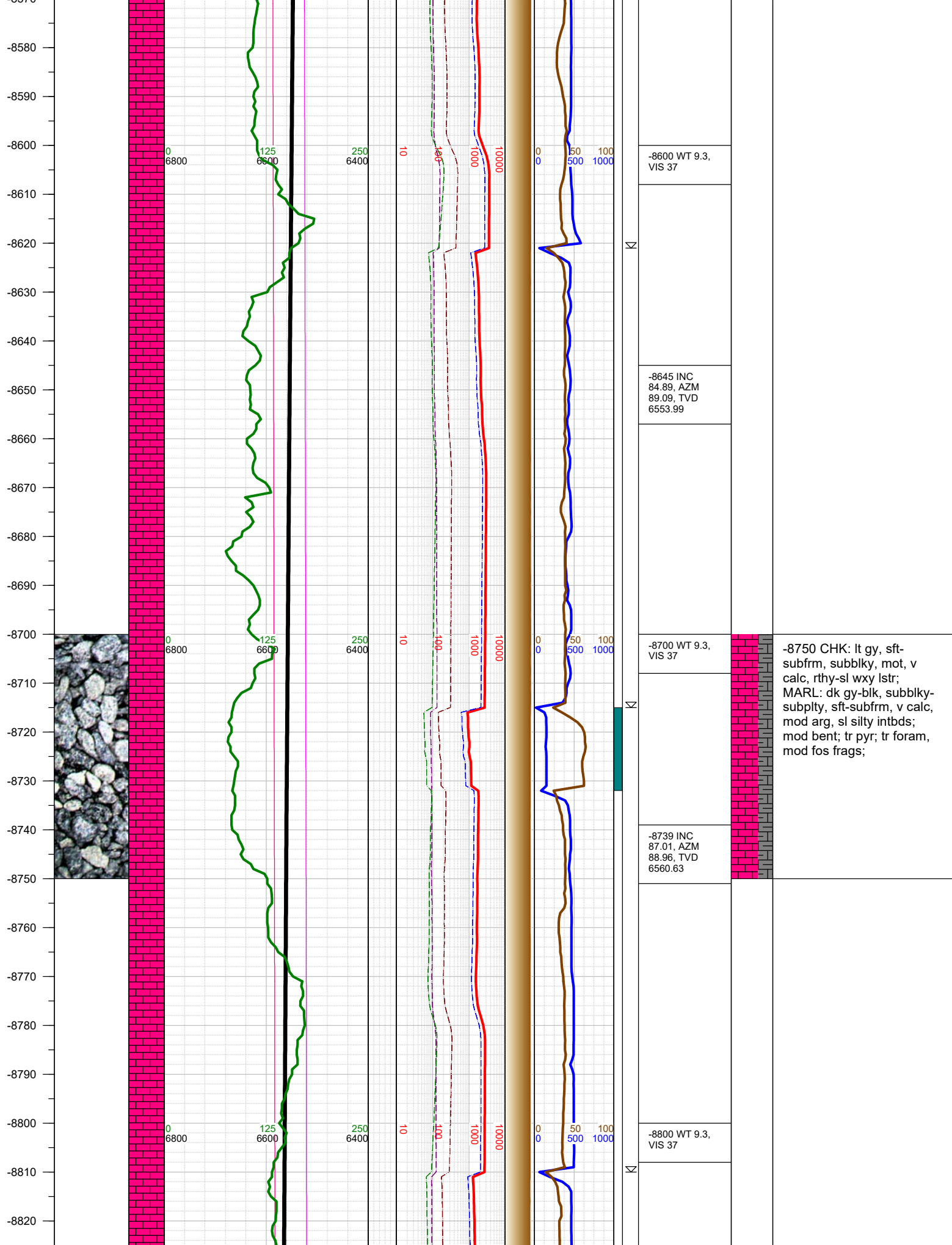




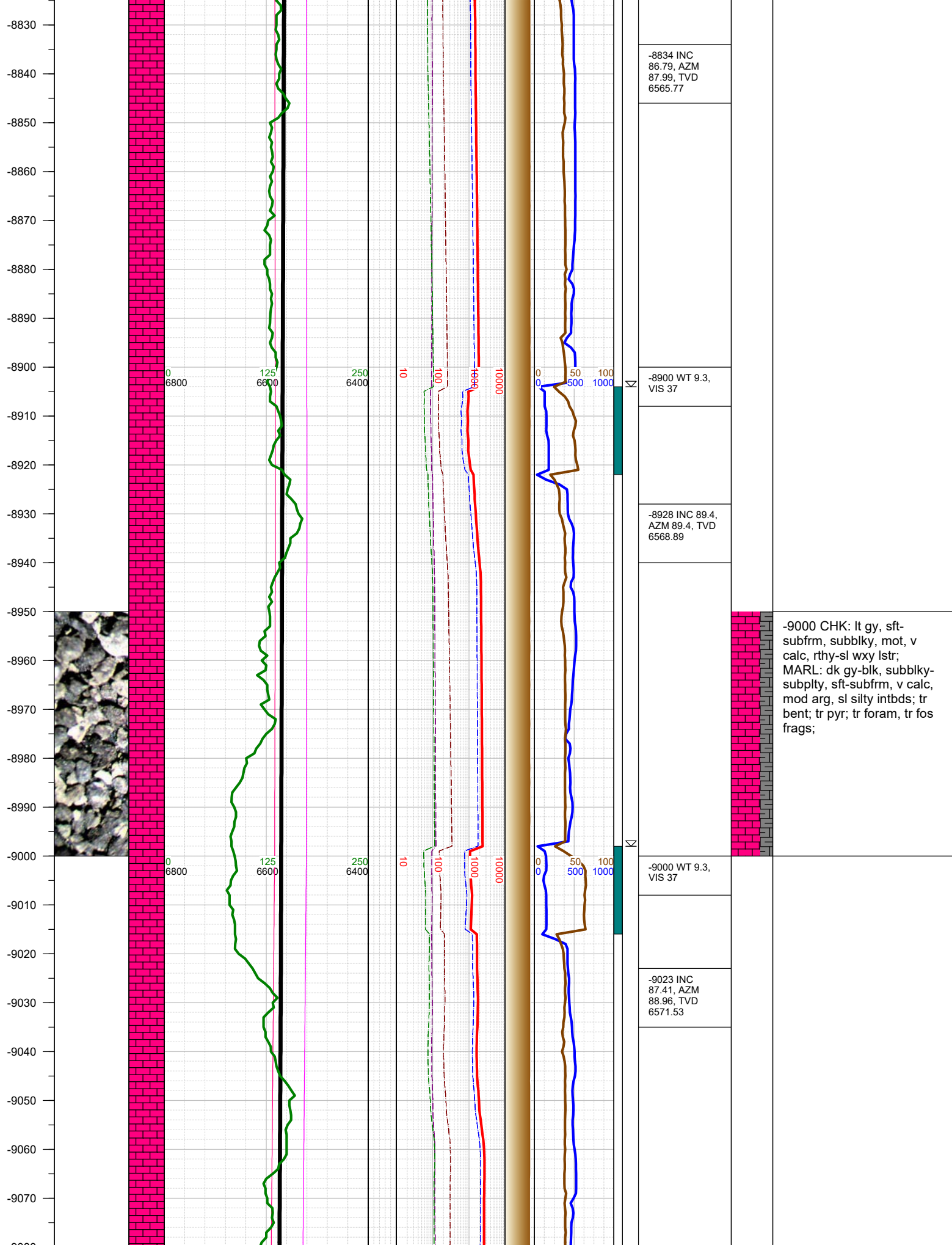


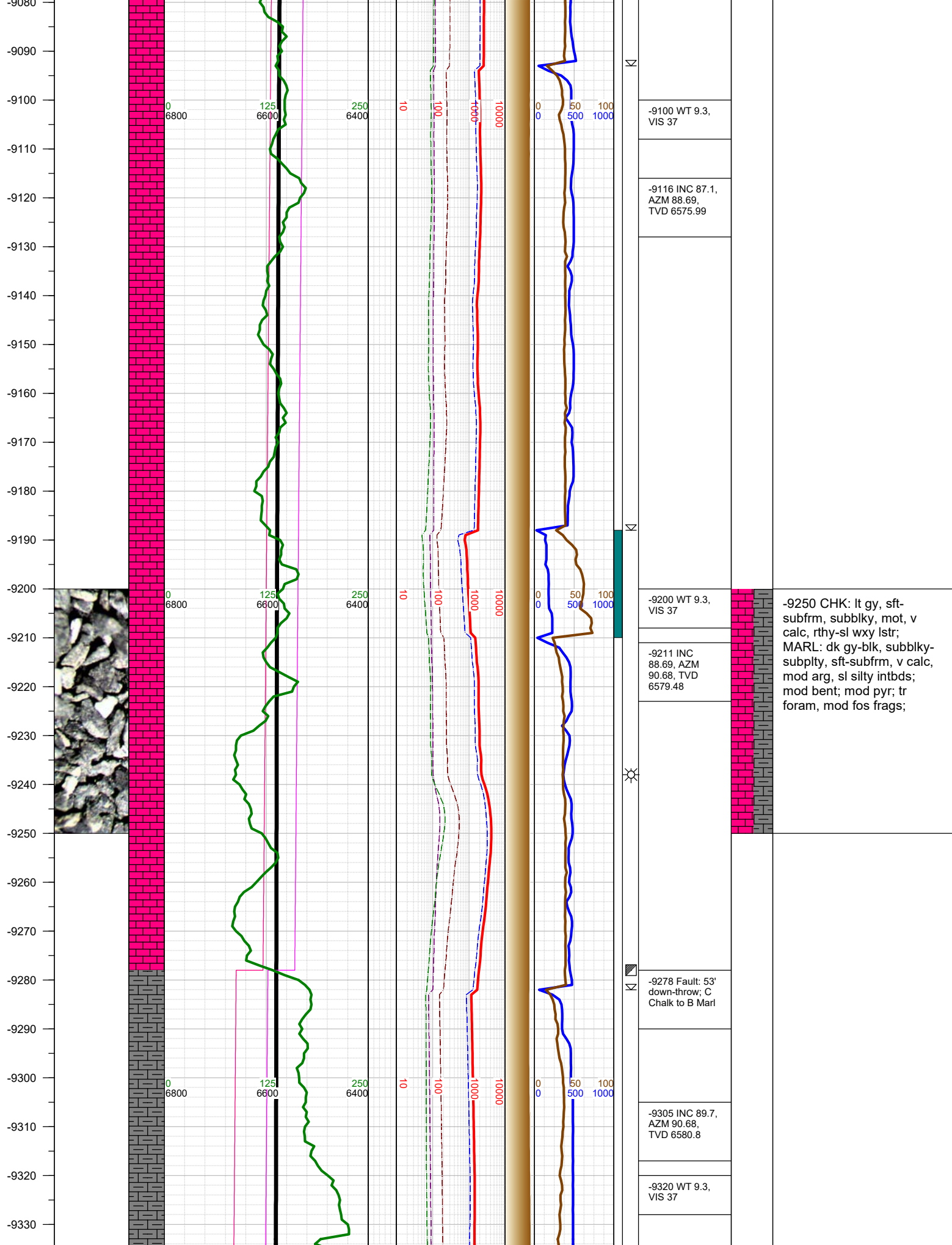






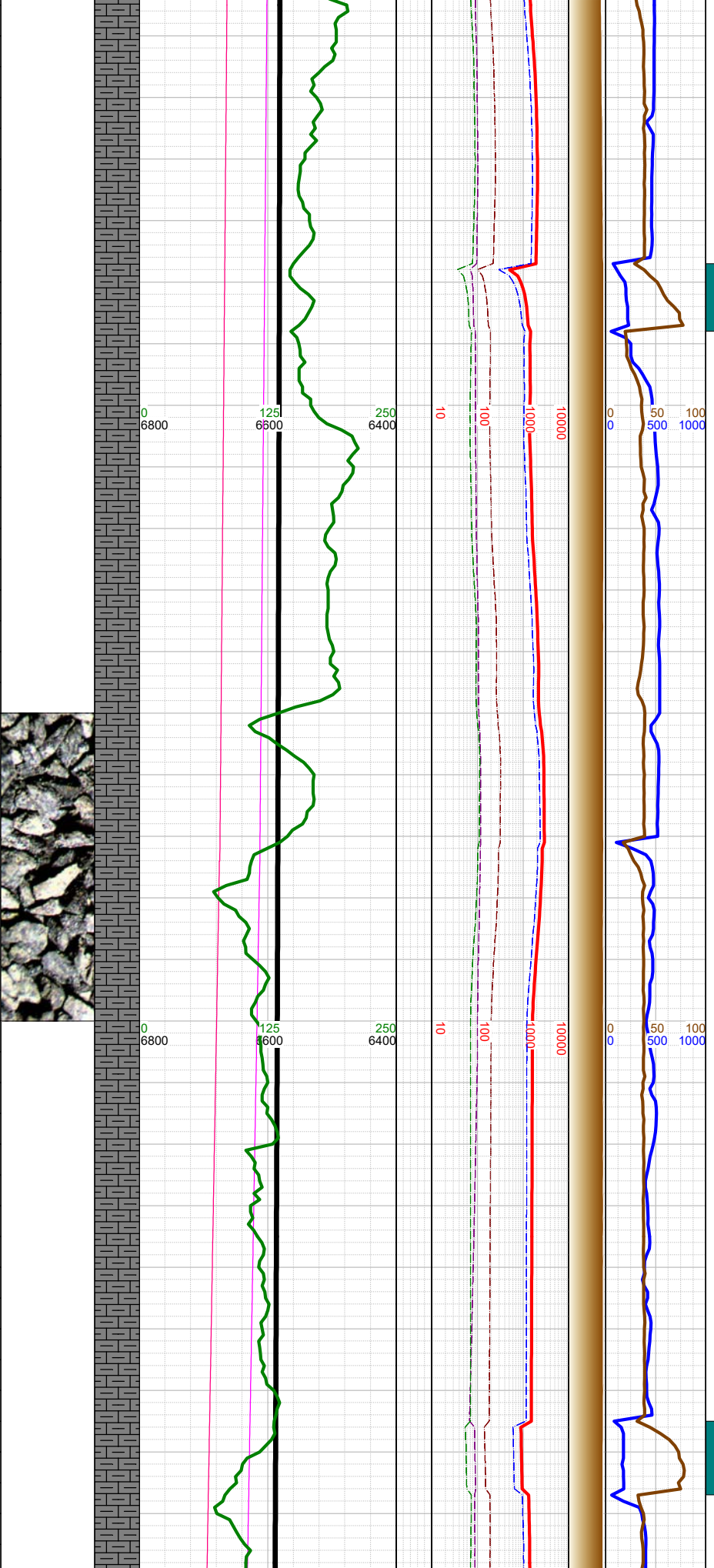
-8750 CHK: lt gy, sft-subfrm, subblky, mot, v calc, rthy-sl wxy lstr; MARL: dk gy-blk, subblky-subply, sft-subfrm, v calc, mod arg, sl silty intbds; mod bent; tr pyr; tr foram, mod fos frags;







-9340  
-9350  
-9360  
-9370  
-9380  
-9390  
-9400  
-9410  
-9420  
-9430  
-9440  
-9450  
-9460  
-9470  
-9480  
-9490  
-9500  
-9510  
-9520  
-9530  
-9540  
-9550  
-9560  
-9570  
-9580



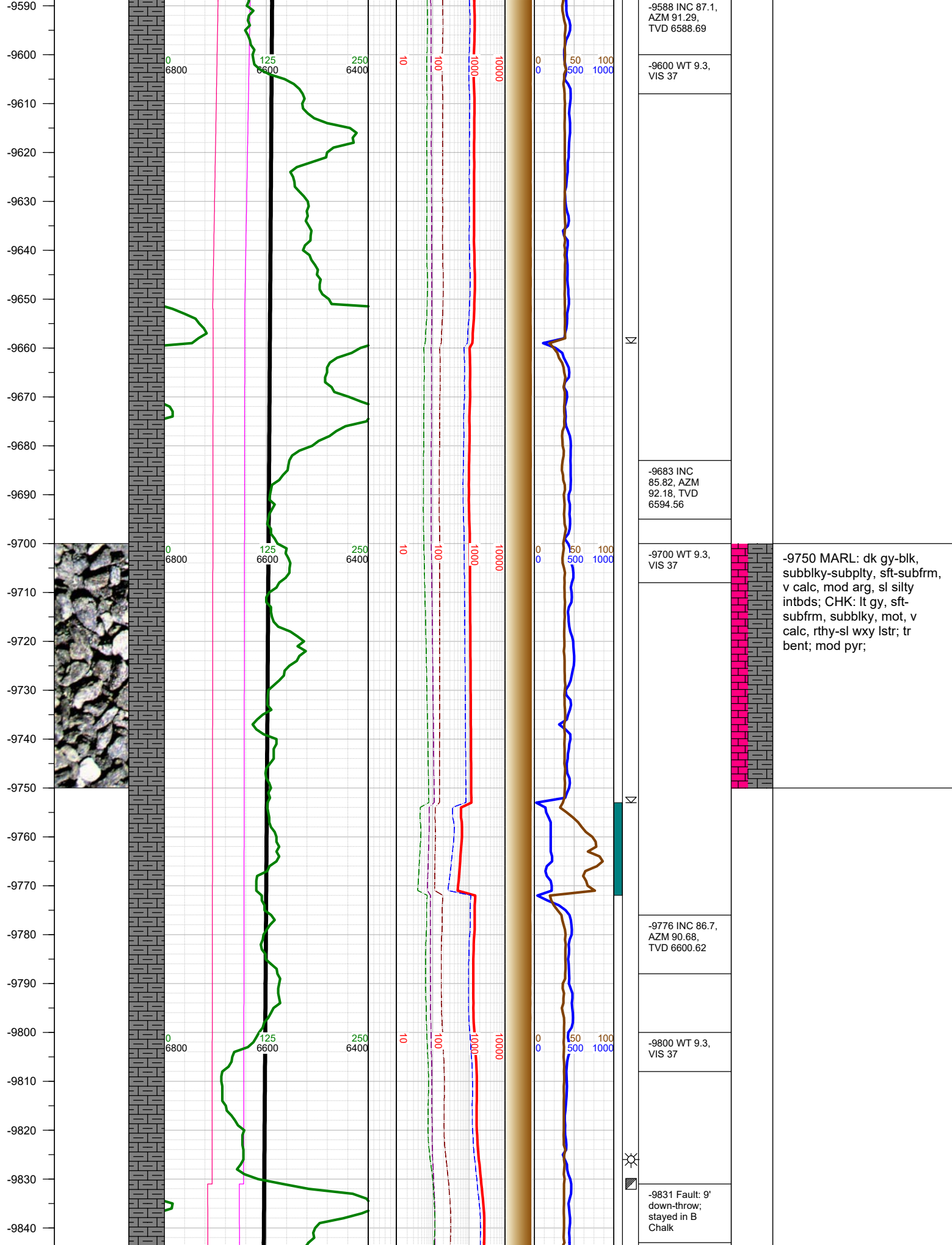
-9400 INC 88.2,  
AZM 90.5, TVD  
6582.54

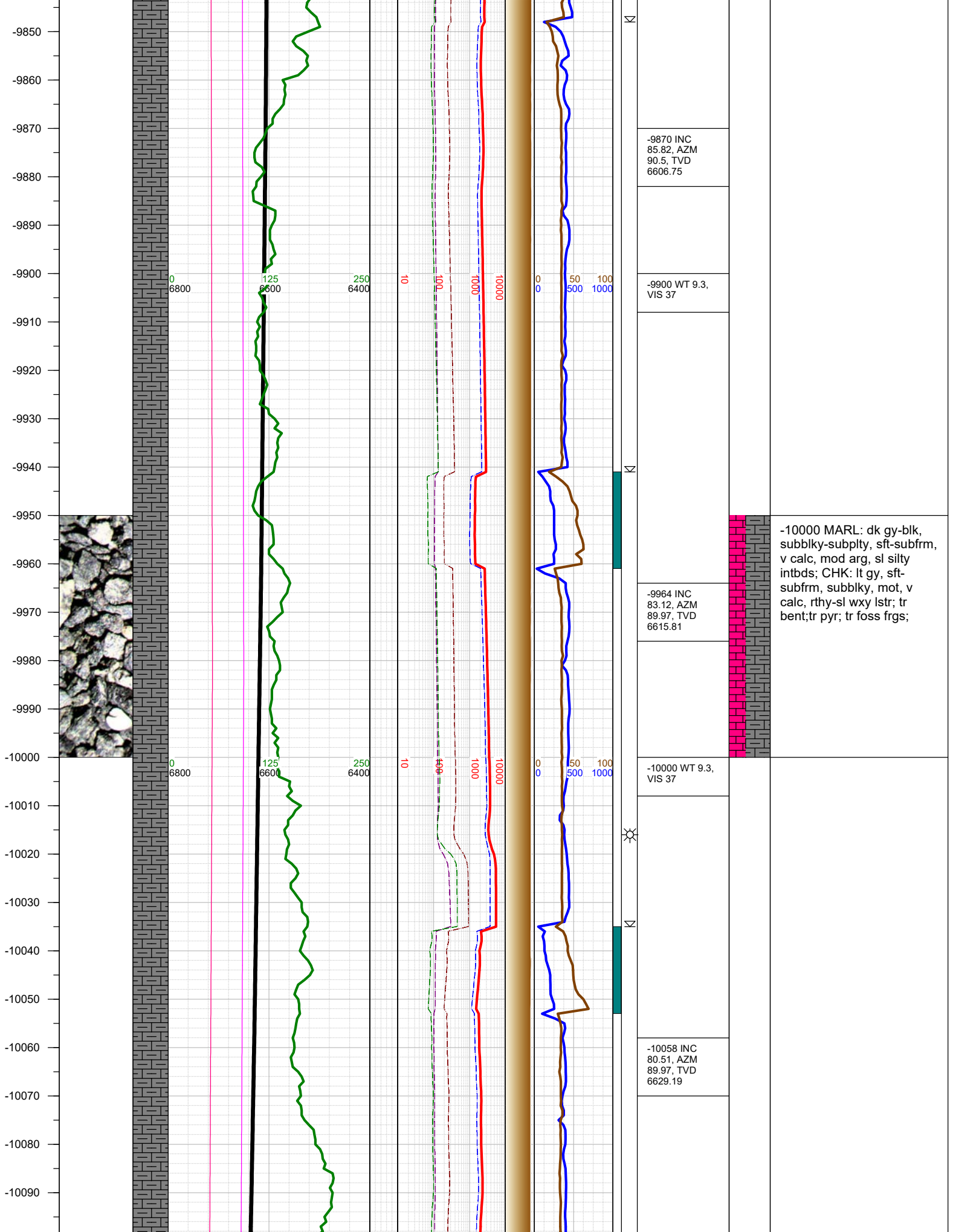
-9420 WT 9.3,  
VIS 37

-9494 INC 88.6,  
AZM 89.66,  
TVD 6585.16

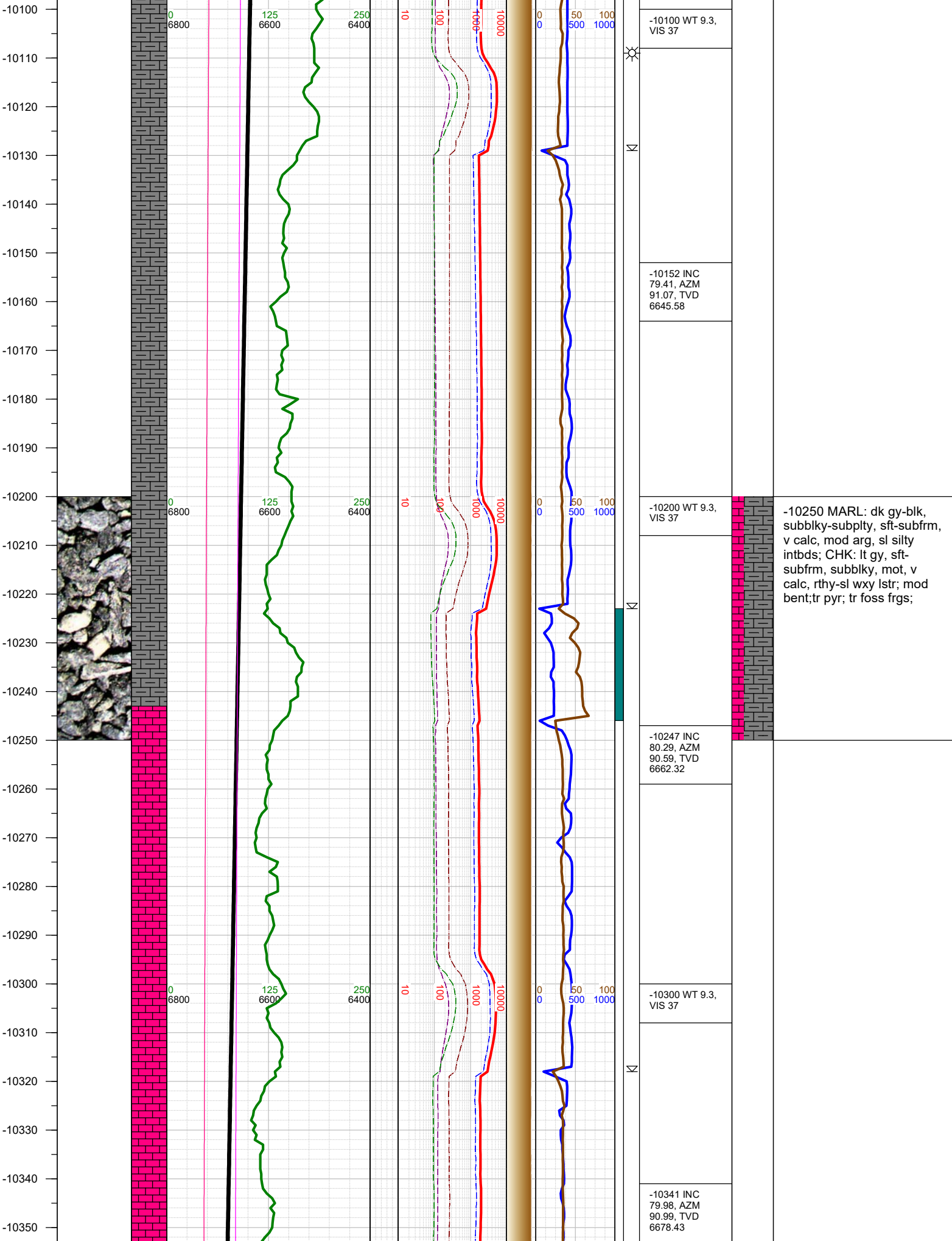
-9510 WT 9.3,  
VIS 37

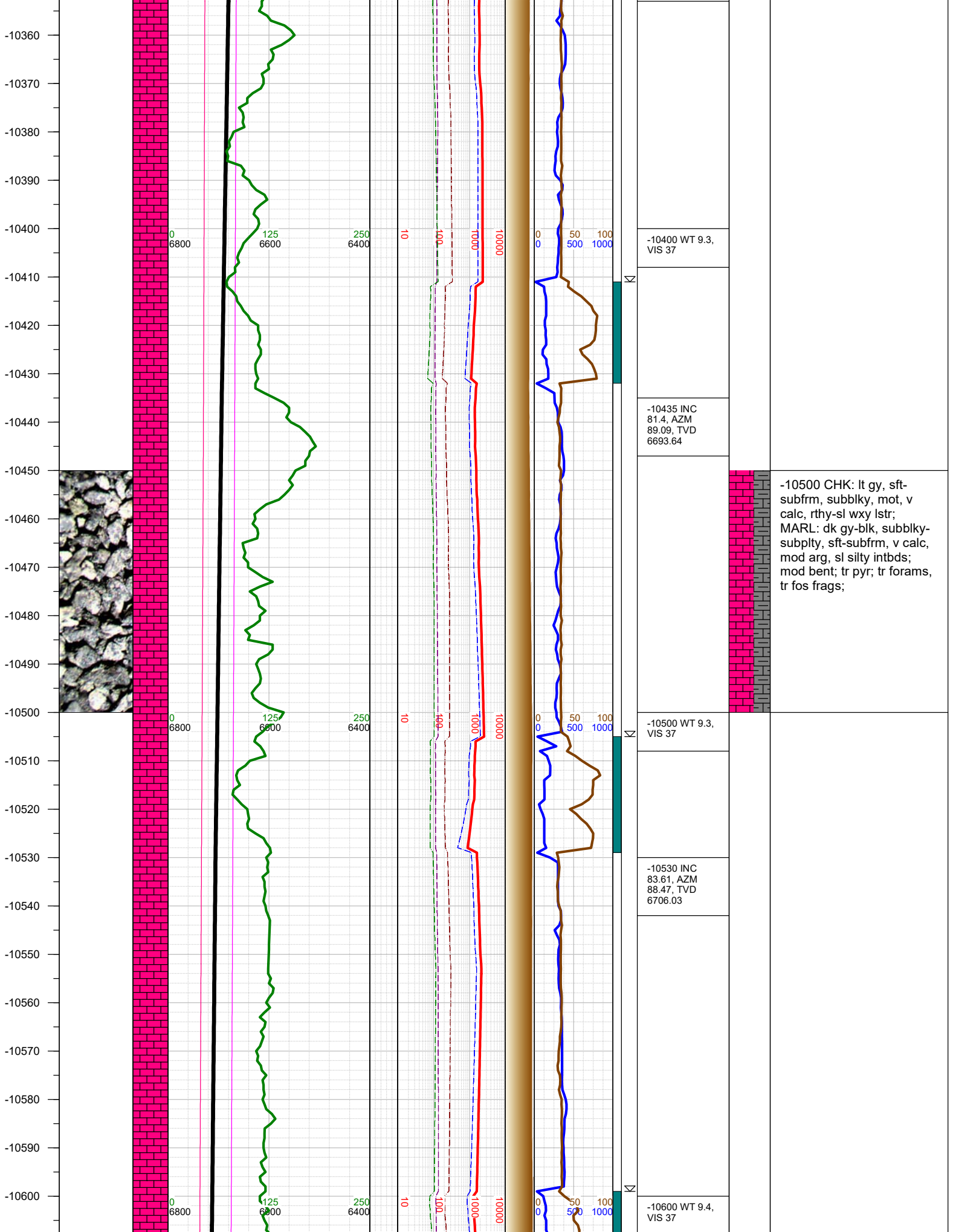
-9500 MARL: dk gy-blk,  
subblky-subplty, sft-subfrm,  
v calc, mod arg, sl silty  
intbds; CHK: lt gy, sft-  
subfrm, subblky, mot, v  
calc, rthy-sl wxy lstr; tr  
bent; tr pyr;

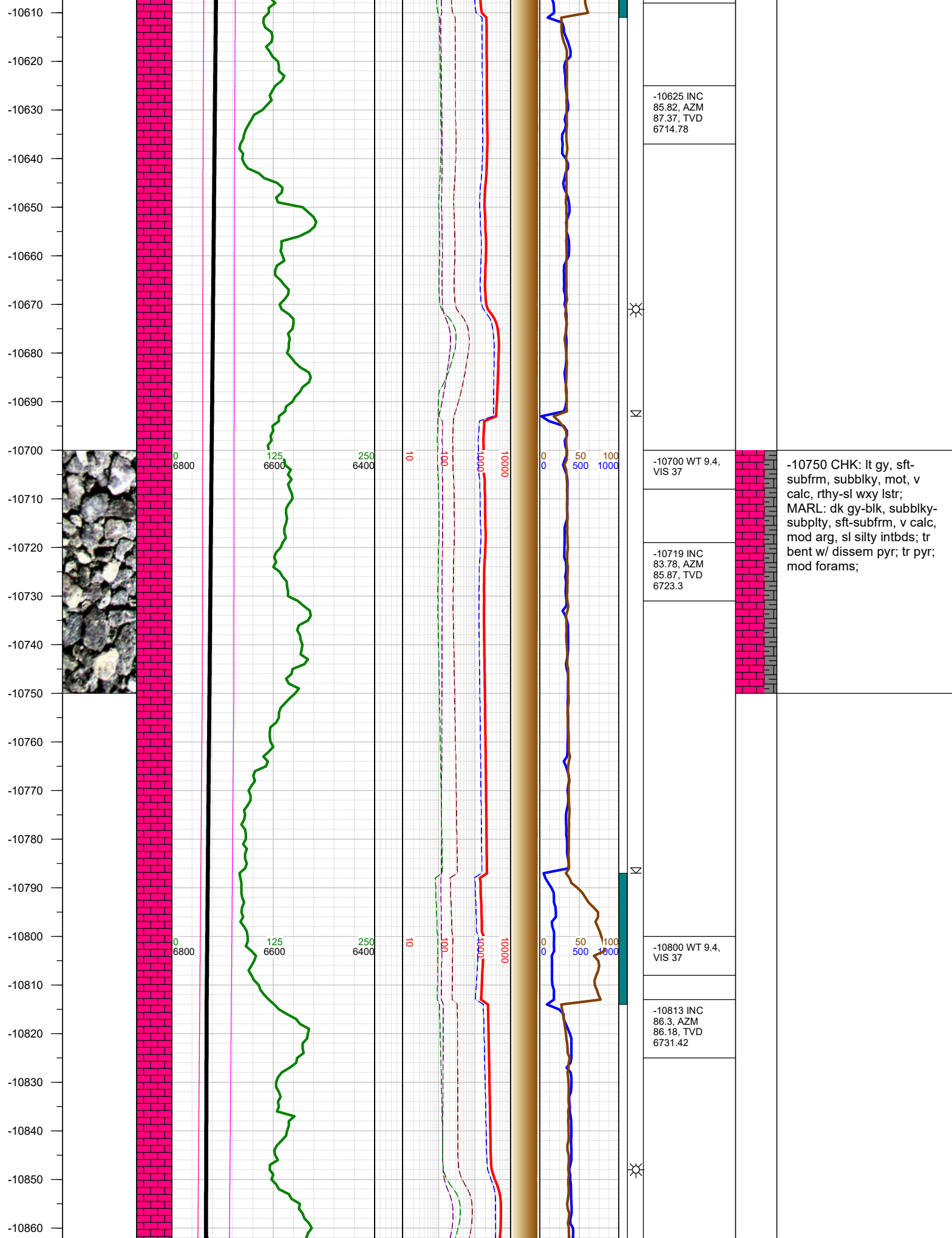




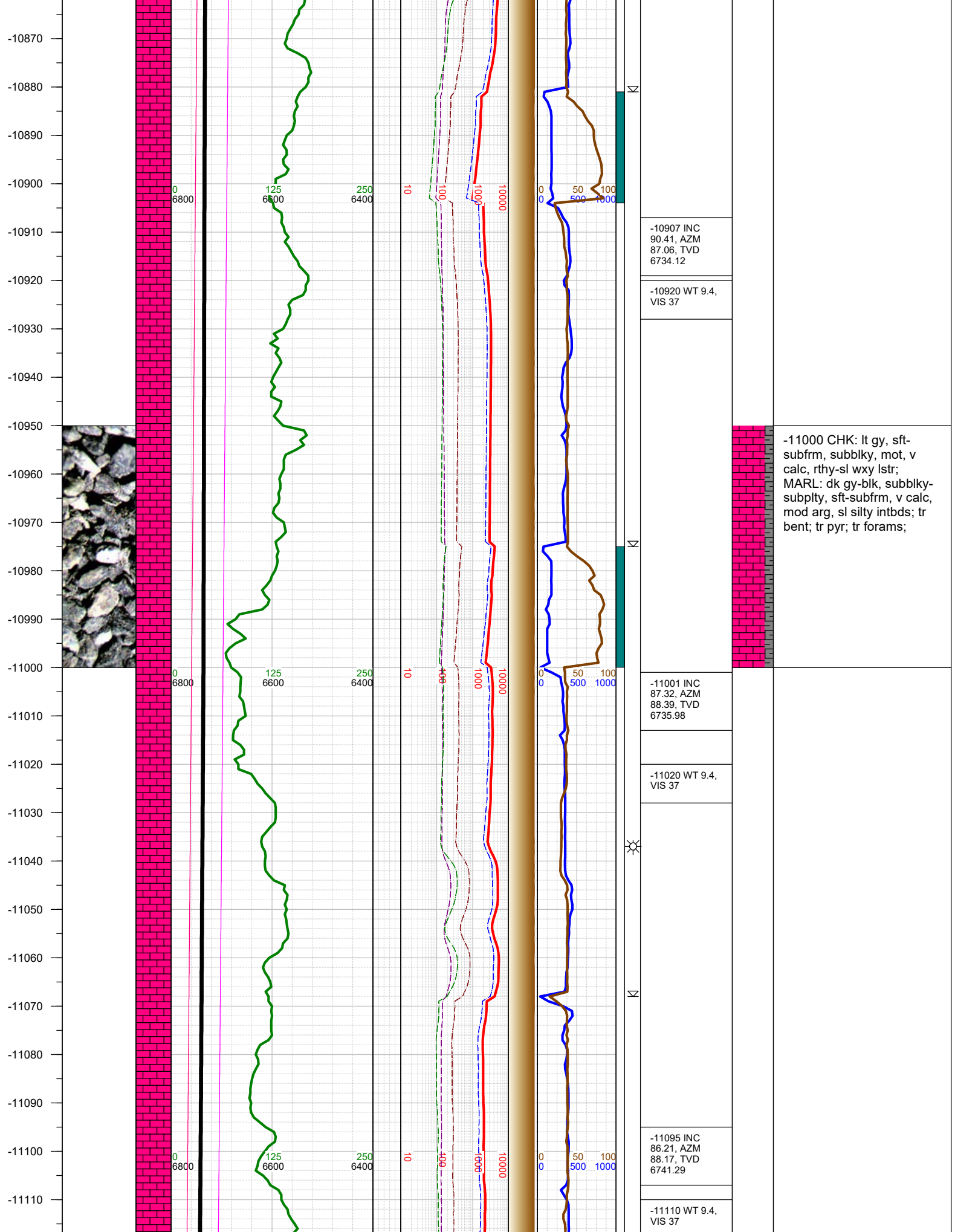


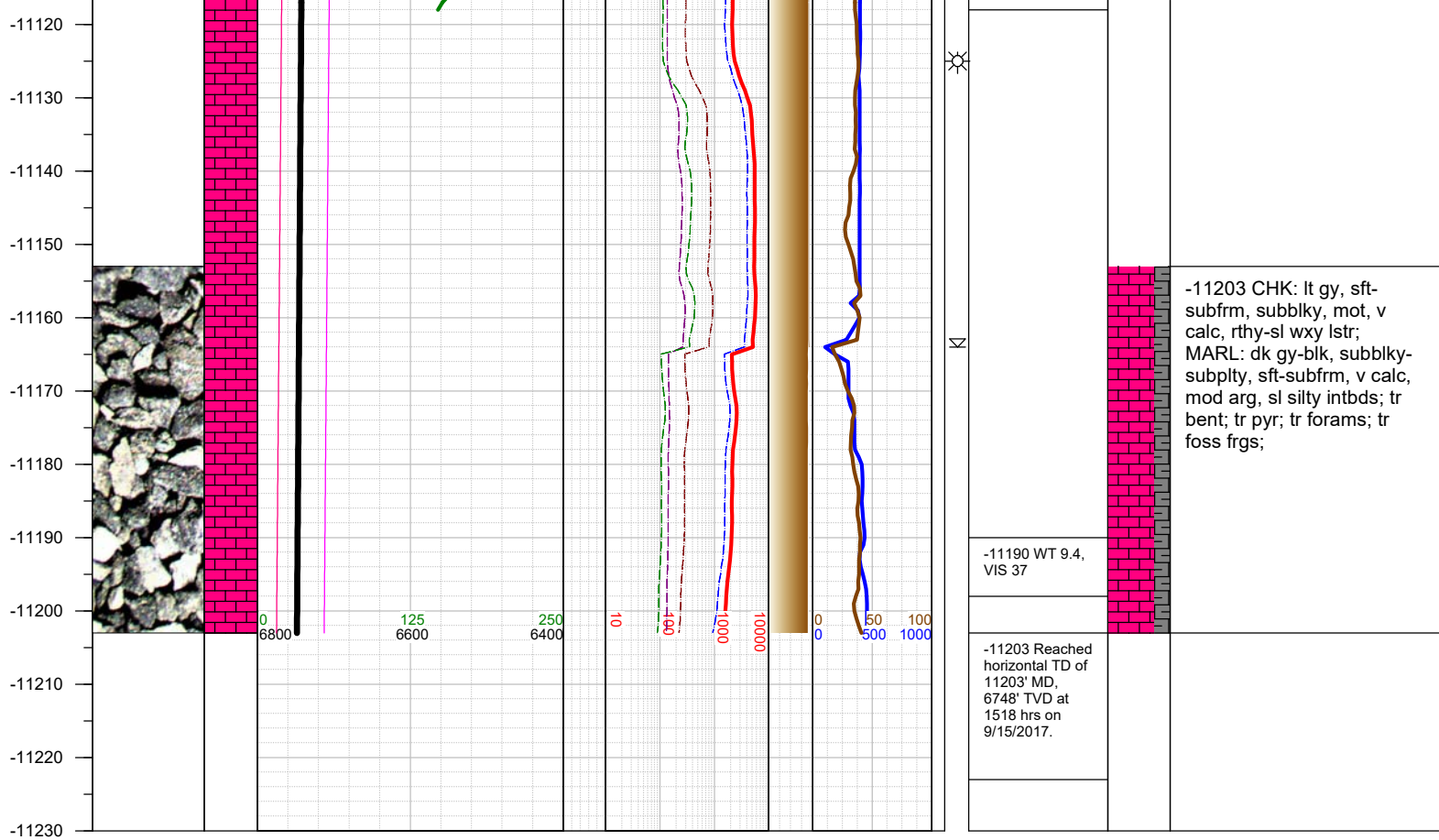












TOTAL DEPTH = 11203'

Thank you for using Earth Science Agency