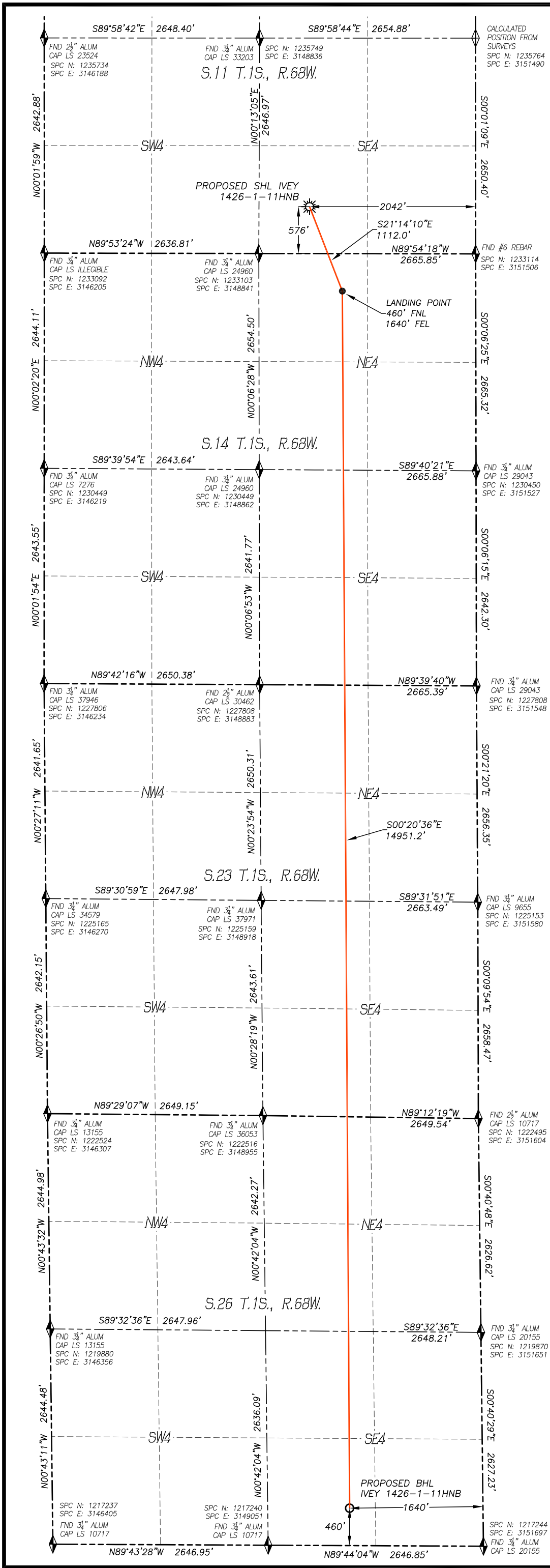


\\Survey\1304015\Drawings\Ivey 1426-1-11HNB.dwg



WELL LOCATION CERTIFICATE

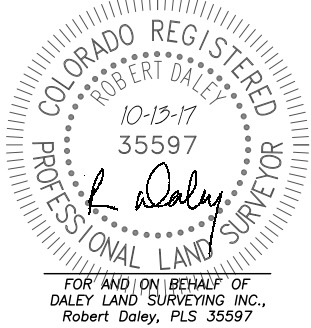
IVEY 1426-1-11HNB

SECTION 11, TOWNSHIP 1 SOUTH, RANGE 68 WEST
OF THE 6TH P.M., ADAMS COUNTY

IN ACCORDANCE WITH A REQUEST FROM WARD PETROLEUM CORP., DALEY LAND SURVEYING, INC. HAS DETERMINED THE SURFACE LOCATION OF THE IVEY 1426-1-11HNB WELL TO BE 576' FSL, 2042' FEL, AS MEASURED AT NINETY (90) DEGREES FROM THE SECTION LINES OF SECTION 11, TOWNSHIP 1 SOUTH, RANGE 68 WEST, AND THE BOTTOM HOLE LOCATION TO BE 460' FSL, 1640' FEL, AS MEASURED AT NINETY (90) DEGREES FROM THE SECTION LINES OF SECTION 26, TOWNSHIP 1 SOUTH, RANGE 68 WEST, OF THE 6TH PRINCIPAL MERIDIAN, ADAMS COUNTY, COLORADO.

I HEREBY STATE THAT THIS WELL LOCATION CERTIFICATE WAS PREPARED BY ME OR UNDER MY DIRECT SUPERVISION, THAT THE WORK WAS COMPLETED ON 4/28/2017 FOR AND ON BEHALF OF WARD PETROLEUM CORP., AND THAT THIS MAP DOES NOT REPRESENT A BOUNDARY SURVEY, IT IS NOT A LAND SURVEY PLAT OR AN IMPROVEMENT SURVEY PLAT AND IT IS NOT TO BE RELIED UPON FOR THE ESTABLISHMENT OF FENCE, BUILDING OR OTHER FUTURE IMPROVEMENT LINES.

- NOTES:**
- 1) BEARINGS FOR THIS MAP ARE ASSUMED AND REFERENCED TO THE SOUTH QUARTER CORNER AND THE SOUTHEAST CORNER OF SECTION 11, T.1S., R.68W.
 - 2) HORIZONTAL DATUM IS NAD83. COORDINATES SHOWN ARE GRID COORDINATES, COLORADO STATE PLANE NORTH ZONE (501).
 - 3) VERTICAL DATUM IS NAVD88 AND ORIGINATES FROM THE LOCAL C.O.R.S. NETWORK, UTILIZING THE GEOID12A MODEL.
 - 4) SEE LOCATION DRAWING FOR VISIBLE IMPROVEMENTS WITHIN 500' OF PROPOSED DISTURBED AREA.
 - 5) SURFACE USE: AGRICULTURAL.
 - 6) INST. OPERATOR: SCOTT ESTABROOKS



NAD 83 LATITUDE AND LONGITUDE			
SURFACE LOCATION:		LANDING POINT/TPZ:	
LATITUDE:	N39.97361°	LATITUDE:	N39.97076°
LONGITUDE:	W104.96670°	LONGITUDE:	W104.96527°
SPC NORTH:	1233681	SPC NORTH:	1232647
SPC EAST:	3149462	SPC EAST:	3149870
ELEV:	5110'	BOTTOM HOLE:	
PDOP:	1.2	LATITUDE:	N39.92973°
QTR/QTR:	SW4/SE4	LONGITUDE:	W104.96495°
		SPC NORTH:	1217701
		SPC EAST:	3150050

NEAREST CULTURAL ITEMS:	
BUILDING:	2045'± SE
BUILDING UNIT:	2174'± SE
HIGH OCC. BLD. UNIT:	3456'± SE
DES. OUTSIDE ACTIVITY AREA:	5280'±
PUBLIC ROAD:	330'± S
ABOVE GROUND UTILITY:	2121'± SE
RAILROAD:	4987'± SE
PROPERTY LINE:	270'± SE

LEGEND

- FOUND MONUMENT
- CALCULATED POSITION
- PROPOSED WELL
- BOTTOM HOLE
- ABANDONED WELL
- EXISTING WELL

0 1200'

SCALE: 1" = 1200'

WARD PETROLEUM

DALEY LAND SURVEYING, INC.
PARKER, COLORADO
303.953.9841