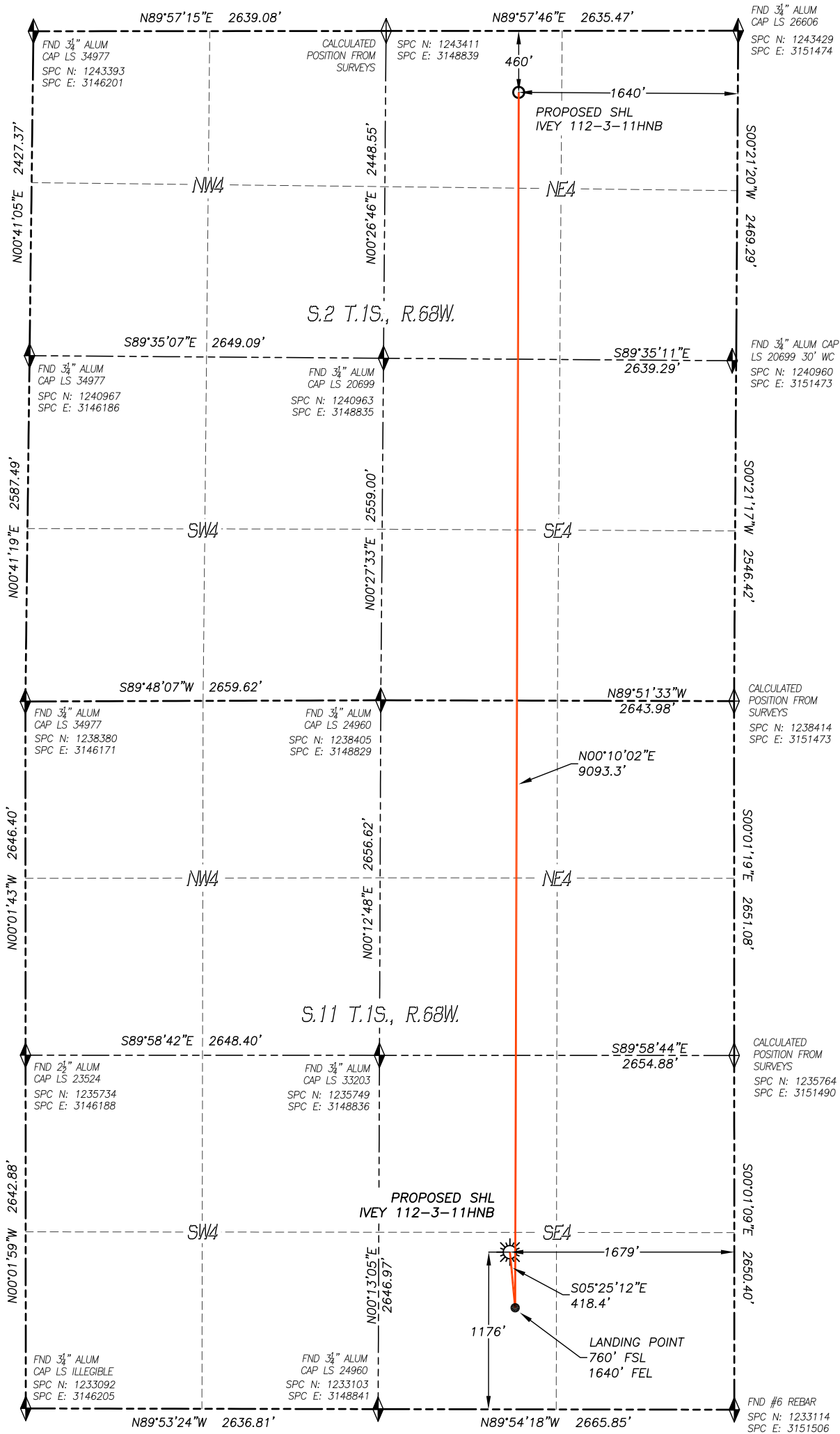


WELL LOCATION CERTIFICATE  
IVEY 112-3-11HNB

SECTION 11, TOWNSHIP 1 SOUTH, RANGE 68 WEST  
OF THE 6TH P.M., ADAMS COUNTY

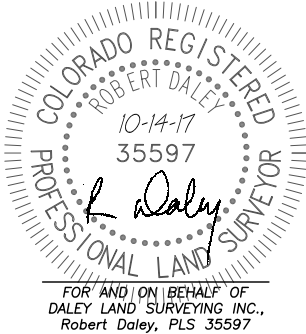


IN ACCORDANCE WITH A REQUEST FROM WARD PETROLEUM CORP., DALEY LAND SURVEYING, INC. HAS DETERMINED THE SURFACE LOCATION OF THE IVEY 112-3-11HNB WELL TO BE 1176' FSL, 1679' FEL, AS MEASURED AT NINETY (90) DEGREES FROM THE SECTION LINES OF SECTION 11, TOWNSHIP 1 SOUTH, RANGE 68 WEST, AND THE BOTTOM HOLE LOCATION TO BE 460' FNL, 1640' FEL, AS MEASURED AT NINETY (90) DEGREES FROM THE SECTION LINES OF SECTION 2, TOWNSHIP 1 SOUTH, RANGE 68 WEST, OF THE 6TH PRINCIPAL MERIDIAN, ADAMS COUNTY, COLORADO.

I HEREBY STATE THAT THIS WELL LOCATION CERTIFICATE WAS PREPARED BY ME OR UNDER MY DIRECT SUPERVISION, THAT THE WORK WAS COMPLETED ON 4/28/2017 FOR AND ON BEHALF OF WARD PETROLEUM CORP., AND THAT THIS MAP DOES NOT REPRESENT A BOUNDARY SURVEY, IT IS NOT A LAND SURVEY PLAT OR AN IMPROVEMENT SURVEY PLAT AND IT IS NOT TO BE RELIED UPON FOR THE ESTABLISHMENT OF FENCE, BUILDING OR OTHER FUTURE IMPROVEMENT LINES.

**NOTES:**

- 1) BEARINGS FOR THIS MAP ARE ASSUMED AND REFERENCED TO THE SOUTH QUARTER CORNER AND THE SOUTHEAST CORNER OF SECTION 11, T.1S., R.68W.
- 2) HORIZONTAL DATUM IS NAD83. COORDINATES SHOWN ARE GRID COORDINATES, COLORADO STATE PLANE NORTH ZONE (501)
- 3) VERTICAL DATUM IS NAVD88 AND ORIGINATES FROM THE LOCAL C.O.R.S. NETWORK, UTILIZING THE GEOID12A MODEL.
- 4) SEE LOCATION DRAWING FOR VISIBLE IMPROVEMENTS WITHIN 500' OF PROPOSED DISTURBED AREA.
- 5) SURFACE USE: AGRICULTURAL.
- 6) INST. OPERATOR: SCOTT ESTABROOKS



NEAREST CULTURAL ITEMS:

BUILDING: 2623'± S  
BUILDING UNIT: 2458'± NE  
HIGH OCC. BLD. UNIT: 3301'± SE  
DES. OUTSIDE ACTIVITY AREA: 5280'+  
PUBLIC ROAD: 483'± NE  
ABOVE GROUND UTILITY: 2061'± SE  
RAILROAD: 4778'± SE  
PROPERTY LINE: 150'± N

NAD 83 LATITUDE AND LONGITUDE

SURFACE LOCATION:

LATITUDE: N39.97525°  
LONGITUDE: W104.96541°  
SPC NORTH: 1234283  
SPC EAST: 3149820  
ELEV: 5107'  
PDOP: 1.3  
QTR/QTR: SW4/SE4

LANDING POINT:

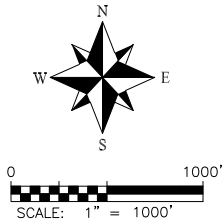
LATITUDE: N39.97411°  
LONGITUDE: W104.96527°  
SPC NORTH: 1233867  
SPC EAST: 3149862

BOTTOM HOLE:

LATITUDE: N39.99906°  
LONGITUDE: W104.96518°  
SPC NORTH: 1242958  
SPC EAST: 3149834

LEGEND

- FOUND MONUMENT
- CALCULATED POSITION
- PROPOSED WELL
- BOTTOM HOLE
- ABANDONED WELL
- EXISTING WELL



WARD PETROLEUM

DALEY LAND  
SURVEYING, INC.  
PARKER, COLORADO  
303.953.9841