



Petroshare Corporation

PRODUCTION POST JOB REPORT

Shook 3-10-3CDH 05-001-09969
S:3 T:1S R:67W Adams CO

CallSheet #: 951
Proposal #: 13434



PRODUCTION Post Job Report

Attention: Mr. Bill Lloyd | (303) 500-1160 | blloyd@petroshare.com
Petroshare Corporation
9635 Maroon Circle, Ste 400 | Englewood, CO 80112

Dear Mr. Lloyd,

Thank you for the opportunity to provide cementing services on this well. BJ Services strives to achieve complete customer satisfaction. If you have any questions regarding the services or data provided, please contact BJ Services at any time.

Sincerely,

Oscar Medrano

Technical Specialist-II | (307) 996-6222 | Oscar.Medrano@bjservices.com

Field Office 1716 East Allison Rd., Cheyenne WY, 82007
Phone: (307) 638-5585

Sales Office 475 17th St. Suite 460 Denver Co., 80202
Phone: (303) 296-1158



Table of Contents

| | |
|-------------------------------------|---|
| 1 Job Details & Summary | 3 |
| 1.1 Geometry | 3 |
| 1.2 Equipment / People | 3 |
| 1.3 Timing | 3 |
| 1.4 General Job Information | 3 |
| 1.5 Well Fluid Details | 4 |
| 1.6 Job Details | 4 |
| 1.7 Job Details (cont.) | 4 |
| 1.8 Circulation | 4 |
| 1.9 Job Execution Information | 4 |
| 1.10 Job Fluid Details | 5 |
| 2 Job Logs | 6 |
| 3 Water Analysis | 7 |
| 4 Pump Diagrams | 7 |
| 5 Field Ticket | 8 |
| 5.1 Service Charges | 8 |
| 5.2 Material Charges | 8 |
| 5.3 Grand Total | 8 |

1 Job Details & Summary

1.1 Geometry

| Type | Function | OD (in) | ID (in) | Weight (lb/ft) | Thread | Top (ft) | Bottom (ft) | Excess (%) |
|-----------|----------|---------|---------|----------------|--------|----------|-------------|------------|
| Casing | Outer | 9.625 | 8.921 | 36 | n/a | 0 | 1823 | 0 |
| Open Hole | Outer | n/a | 8.5 | n/a | n/a | 1823 | 12883 | 15 |
| Casing | Inner | 5.5 | 4.778 | 20 | n/a | 0 | 12883 | 0 |

1.2 Equipment / People

| Unit Type | Unit | Employee #1 | Employee #2 | Mileage |
|----------------------------|------|-------------------|---------------------|---------|
| Bulk Trailer | 502 | Martinez, Michael | | 160 |
| Silo | 654 | | | 160 |
| Silo | 664 | | | 160 |
| Light Duty Pickups | 5 | Acuna, Roger | Valenzuela, Yannick | 160 |
| Cement Pump | 101 | Staples, Anthony | | 160 |
| Cement Auxiliary Equipment | | Groneman, Josh | | 160 |

1.3 Timing

| Event | Date/Time |
|-----------------|-----------------|
| Call Out | 6/29/2017 00:00 |
| Depart Facility | 6/29/2017 02:30 |
| On Location | 6/29/2017 04:30 |
| Rig Up Iron | 6/29/2017 05:00 |
| Job Started | 6/29/2017 13:48 |
| Job Completed | 6/29/2017 17:20 |
| Rig Down Iron | 6/29/2017 17:30 |
| Depart Location | 6/29/2017 18:00 |

1.4 General Job Information

| Metrics | Value |
|-------------------------|-------------|
| Well Fluid Density | 10.5 lb/gal |
| Well Fluid Type | OBM |
| Rig Circulation Vol | 689 bbls |
| Rig Circulation Time | 3 hours |
| Calculated Displacement | 286.5 bbls |
| Actual Displacement | 286.5 bbls |
| Total Spacer to Surface | 40 bbls |
| Total CMT to Surface | 50 bbls |
| Well Topped Out | No |

1.5 Well Fluid Details

| Metrics | Value |
|-------------------|-------|
| Plastic Viscosity | 29 |
| Yield Point | 9 |
| 10 sec. SGS | 8 |
| 10 min. SGS | 31 |
| 30 min. SGS | 40 |
| Filtrate | 8 |
| Flow Line Temp. | 115 |

1.6 Job Details

| Metrics | Value |
|--------------------------------|-------------|
| Flare Prior to Job | No |
| Flare During Job | No |
| Flare at End of Job | No |
| Well Full Prior to Job | Yes |
| Well Fluid Density Into Well | 10.5 lb/gal |
| Well Fluid Density Out of Well | 10.5 lb/gal |

1.7 Job Details (cont.)

| Metrics | Value |
|---------|--------|
| BHCT | 228 °F |
| BHST | 228 °F |

1.8 Circulation

| |
|------------------------------|
| Lost Circulation Experienced |
| No |

1.9 Job Execution Information

| Job | Fluid | Product | Function | Density (lb/gal) | Yield (ft ³ /sk) | Water Rq. (gal/sk) | Water Rq. (gal/bbl) | Volume (sks) | Volume (bbl) | Top (ft) |
|-----|-------|----------------|-------------------|------------------|-----------------------------|--------------------|---------------------|--------------|--------------|----------|
| 1 | 1 | CD Spacer | Spacer | 11.00 | | | 32.73 | | 40.00 | 0 |
| 1 | 2 | ALTCem P100-X2 | Lead | 12.50 | 2.07 | 11.81 | | 997.00 | 367.65 | 0 |
| 1 | 3 | ALTCem P50-X1 | Tail | 13.50 | 1.47 | 7.43 | | 920.00 | 241.63 | 7795 |
| 1 | 4 | Water | DisplacementFinal | 8.33 | | | 42.00 | | 286.50 | 0 |

1.10 Job Fluid Details

| Job | Fluid | Type | Fluid | Product | Function | Conc. | Uom |
|-----|-------|--------|----------------|---------|-----------------------|--------|---------|
| 1 | 1 | Spacer | CD Spacer | ASR-20 | StrengthRetrogression | 179.68 | lb/bbl |
| 1 | 1 | Spacer | CD Spacer | AR-31 | Retarder | 0.79 | lb/bbl |
| 1 | 1 | Spacer | CD Spacer | ASF-20 | Surfactant | 0.50 | gal/bbl |
| 1 | 1 | Spacer | CD Spacer | ASF-80 | Surfactant | 0.50 | gal/bbl |
| 1 | 1 | Spacer | CD Spacer | AVS-10 | Viscosifier | 0.80 | lb/bbl |
| 1 | 2 | Lead | ALTCem P100-X2 | AC3-10 | Cement | 100.00 | % |
| 1 | 2 | Lead | ALTCem P100-X2 | ABX-30 | BondEnhancer | 0.40 | %BWOB |
| 1 | 2 | Lead | ALTCem P100-X2 | ADF-11 | Defoamer | 0.30 | %BWOB |
| 1 | 2 | Lead | ALTCem P100-X2 | AFL-10 | FluidLoss | 0.30 | %BWOB |
| 1 | 2 | Lead | ALTCem P100-X2 | AR-31 | Retarder | 0.20 | %BWOB |
| 1 | 2 | Lead | ALTCem P100-X2 | AVS-10 | Viscosifier | 0.10 | %BWOB |
| 1 | 3 | Tail | ALTCem P50-X1 | ACG-10 | Cement | 50.00 | % |
| 1 | 3 | Tail | ALTCem P50-X1 | AFA-10 | Extender | 50.00 | % |
| 1 | 3 | Tail | ALTCem P50-X1 | ADF-11 | Defoamer | 0.30 | %BWOB |
| 1 | 3 | Tail | ALTCem P50-X1 | AFL-50 | FluidLoss | 0.20 | %BWOB |
| 1 | 3 | Tail | ALTCem P50-X1 | AR-20 | Retarder | 0.10 | %BWOB |
| 1 | 3 | Tail | ALTCem P50-X1 | AVS-10 | Viscosifier | 0.10 | %BWOB |
| 1 | 3 | Tail | ALTCem P50-X1 | AVS-50 | Viscosifier | 2.00 | %BWOB |



2 Job Logs

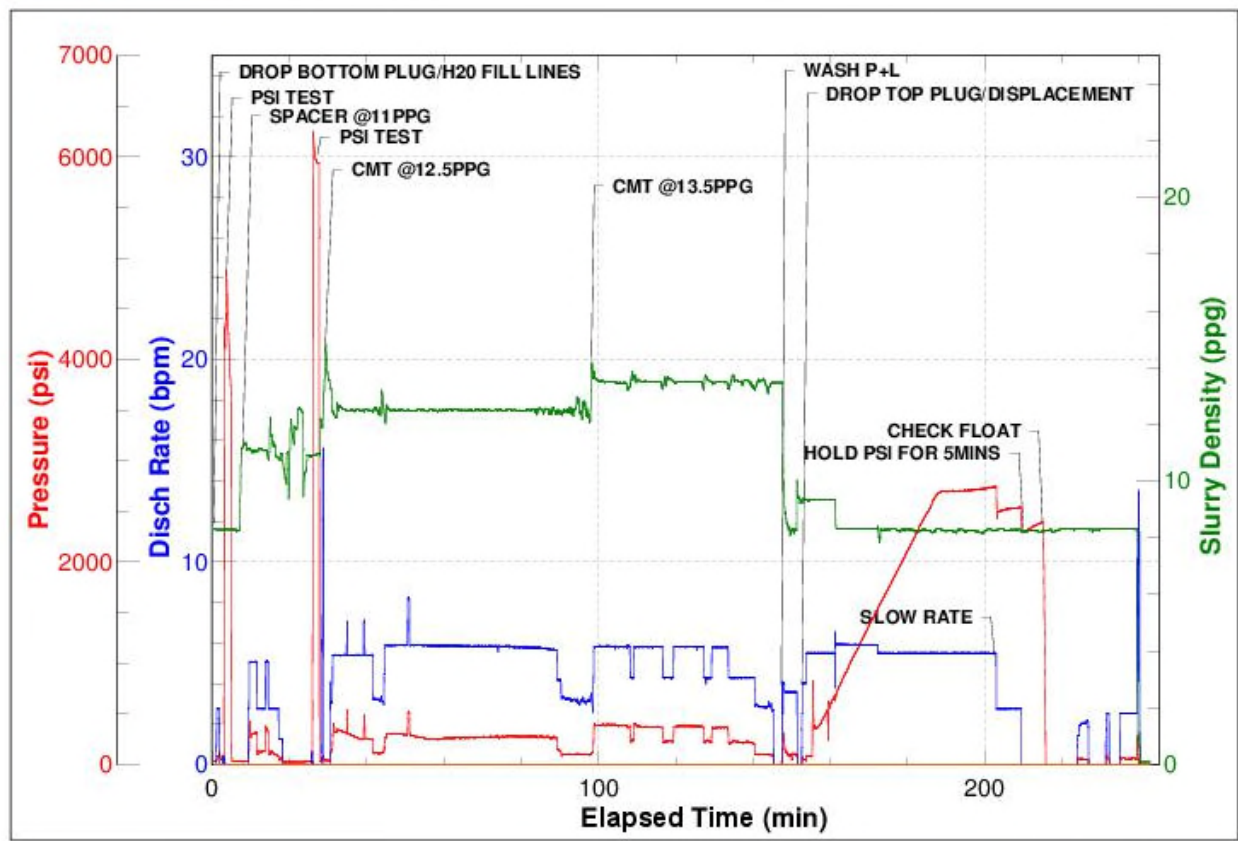
| Line | Event | Date (MM/DD/YY) | Time (HH:MM) | Density (lb/gal) | Pump Rate (bpm) | Pump Volume (bbls) | Pipe Pressure (psi) | Comment |
|------|-----------------------------------|--------------------|-----------------|---------------------|-----------------------|--------------------------|---------------------------|---|
| 1 | CALL OUT | 6/29/2017 | 00:00 | | | | | CALL OUT |
| 2 | PRE-CONVOY | 6/29/2017 | 02:30 | | | | | JOURNEY MANAGEMENT |
| 3 | ARRIVE ON LOCATION | 6/29/2017 | 04:30 | | | | | ARRIVE ON LOCATION |
| 4 | STEACS MEETING/JSA | 6/29/2017 | 04:45 | | | | | STEACS MEETING BEFORE SPOTTING AND RIG UP |
| 5 | SPOT EQUIPMENT/ RIG UP | 6/29/2017 | 05:00 | | | | | SPOT EQUIPMENT/RIG UP |
| 6 | | 6/29/2017 | 00:00 | | | | | STEACS MEETING WITH CREW AND RIG CREW |
| 7 | DROP BOTTOM PLUG | 6/29/2017 | 13:47 | | | | | DROP BOTTOM PLUG |
| 8 | FILL LINES | 6/29/2017 | 13:48 | 8.34 | 3 | 2 | 20 | FILL LINES 2BBLs OF FRESH H2O |
| 9 | PSI TEST | 6/29/2017 | 13:52 | 8.34 | | | 5000 | PSI TEST TO 5000 PSI |
| 10 | CD SPACER | 6/29/2017 | 13:56 | 11 | 5 | 40 | 270 | PUMP CD SPACER @11PPG 40SKS |
| 11 | LEAD CMT | 6/29/2017 | 15:08 | 12.5 | 5.7 | 367 | 308 | PUMP 367BBLs LEAD CMT @12.5PPG 2.07YLD 11.81GAL/SX 997SKS |
| 12 | TAIL CMT | 6/29/2017 | 15:45 | 13.5 | 5.5 | 240 | 232 | PUMP 240BBLs TAIL CMT @ 13.5PPG 1.47YLD 7.43GAL/SK 920SKS |
| 13 | SHUT DOWN WASH PUMPS AND LINES | 6/29/2017 | 16:12 | 8.34 | 3 | 8 | 75 | SHUT DOWN/WASH PUMPS AND LINES |
| 14 | DROP TOP PLUG | 6/29/2017 | 16:18 | | | | | DROP TOP PLUG |
| 15 | DISPLACEMENT | 6/29/2017 | 16:45 | 8.34 | 5.5 | 277.5 | 1940 | PUMP 286.5BBLs DISPLACEMENT FRESH H2O |
| 16 | SLOW RATE | 6/29/2017 | 17:09 | 8.34 | 2 | 10 | 2200 | SLOW RATE FOR LAST 10BBLs 2BPM |
| 17 | SHUT DOWN | 6/29/2017 | 17:15 | | | | 2348 | SHUT DOWN HELD PSI @2348 DID NOT LAND PLUG |
| 18 | CHECK FLOAT | 6/29/2017 | 17:20 | | | | | CHECK FLOAT/FLOAT HELD |
| 19 | STEACS MEETING/RIG DOWN | 6/29/2017 | 17:30 | | | | | STEACS MEETING/RIG DOWN |
| 20 | JOURNEY MANAGEMENT/LEAVE LOCATION | 6/29/2017 | 18:00 | | | | | JOURNEY MANAGEMENT/LEAVE LOCATION |

3 Water Analysis

| Metrics | Value | Recommended |
|------------------|------------------|-------------|
| Water Source | Upright Rig Tank | |
| Temperature | 65 °F | 50-80 °F |
| pH Level | 7 | 5.5-8.5 |
| Chlorides | 0 mg/L | 0-3000 mg/L |
| Total Alkalinity | 250 | 0-1000 |
| Total Hardness | 250 mg/L | 0-500 mg/L |
| Carbonates | 0 mg/L | 0-100 mg/L |
| Sulfates | <200 mg/L | 0-1500 mg/L |
| Potassium | 450 mg/L | 0-3000 mg/L |
| Iron | 0 mg/L | 0-300 mg/L |

4 Pump Diagrams

BJ JobMaster Program Version 4.02
Job Number: CS #951
Customer: PETROSHARE
Well Name: SHOOK 3-10-3CDH



Job Start: Thursday, June 29, 2017



5 Field Ticket

5.1 Service Charges

| Part # | Name | Unit Price | Unit | Quantity | Total |
|----------------|--|-------------|------|----------|-------------|
| 5 | Additional Hours | \$1,500.00 | hour | 5 | \$7,500.00 |
| 2 | Depth Charge (based on MD) | \$0.50 | foot | 13001 | \$6,500.50 |
| 6 | Drayage Per Additional Unit Roundtrip | \$160.00 | hour | 18 | \$2,880.00 |
| 14 | Mobilization, Other | \$600.00 | hour | 3 | \$1,800.00 |
| 1 | Pumping Charge (includes 8 hours of location time) | \$12,000.00 | job | 1 | \$12,000.00 |
| Subtotal: | | | | | \$30,680.50 |
| Discount (%): | | | | | % 65.00 |
| Discount (\$): | | | | | \$19,942.33 |
| Total: | | | | | \$10,738.18 |

5.2 Material Charges

| Part # | Name | Unit Price | Unit | Quantity | Unit | Total |
|----------------|--------|------------|------|----------|------|-------------|
| 2605 | ASR-20 | \$0.55 | lb | 7188 | lb | \$3,953.40 |
| 2213 | AR-31 | \$17.50 | lb | 32 | lb | \$560.00 |
| 2402 | ASF-20 | \$70.70 | gal | 20 | gal | \$1,414.00 |
| 2408 | ASF-80 | \$103.20 | gal | 20 | gal | \$2,064.00 |
| 2901 | AVS-10 | \$52.05 | lb | 32 | lb | \$1,665.60 |
| 2002 | AC3-10 | \$29.00 | sack | 997 | sack | \$28,913.00 |
| 2703 | ABX-30 | \$22.50 | lb | 375 | lb | \$8,437.50 |
| 2504 | ADF-11 | \$8.60 | lb | 282 | lb | \$2,425.20 |
| 2301 | AFL-10 | \$32.50 | lb | 282 | lb | \$9,165.00 |
| 2213 | AR-31 | \$17.50 | lb | 188 | lb | \$3,290.00 |
| 2901 | AVS-10 | \$52.05 | lb | 94 | lb | \$4,892.70 |
| 2001 | ACG-10 | \$28.00 | sack | 460 | sack | \$12,880.00 |
| 2602 | AFA-10 | \$0.11 | lb | 34717 | lb | \$3,818.87 |
| 2504 | ADF-11 | \$8.60 | lb | 234 | lb | \$2,012.40 |
| 2308 | AFL-50 | \$33.50 | lb | 156 | lb | \$5,226.00 |
| 2202 | AR-20 | \$25.40 | lb | 78 | lb | \$1,981.20 |
| 2901 | AVS-10 | \$52.05 | lb | 78 | lb | \$4,059.90 |
| 2905 | AVS-50 | \$0.40 | lb | 1560 | lb | \$624.00 |
| Subtotal: | | | | | | \$97,382.77 |
| Discount (%): | | | | | | % 65.00 |
| Discount (\$): | | | | | | \$63,298.80 |
| Total: | | | | | | \$34,083.97 |

5.3 Grand Total

| Services | Materials | Grand Total |
|-------------|-------------|-------------|
| \$10,738.18 | \$34,083.97 | \$44,822.14 |