



Scale: 5" / 100'
Measured Depth Log

Well Name SHOOK 3-10-3CDH_REVISED_Horiz

Location NWSE SECTION 3 T1S R67W

State COLORADO

County ADAMS

Country USA

Rig Number ENSIGN 145

API Number 05-001-09969

AFE # 1700009

Geographic Region DJ BASIN

Field WATTENBERG

Spud Date 4/13/2017

Drilling Completed 6/27/2017

Surface Coordinates NWSE SECTION 3, T1S, R67W
2058' FSL x 2219' FEL

Bottom Hole Coordinates SECTION 10, T1S, R67W
357' FSL x 2199' FWL

Ground Elevation 5098'

K.B. Elevation 5111'

Logged Interval 7600' To 13016'

Total Depth 5416'

Formation CODELL SANDSTONE

Type of Drilling Fluid OIL BASED MUD

Operator

Company PetroShare Corporation

Address 7200 S Alton Way
Englewood, CO 80112



Geologist

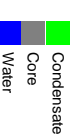
Name WEDGE HOWLAND, SAGE BETTS, GARY MYERS

Company Terra Guidance

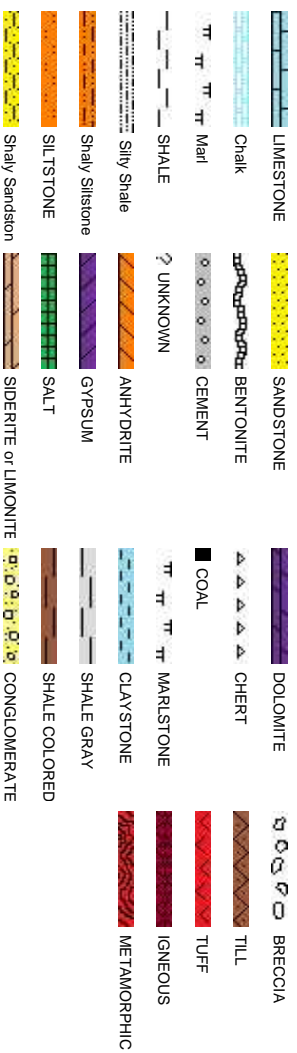
Address 1298 O Road
Loma CO 81524
(970) 260-5408



Color Coding

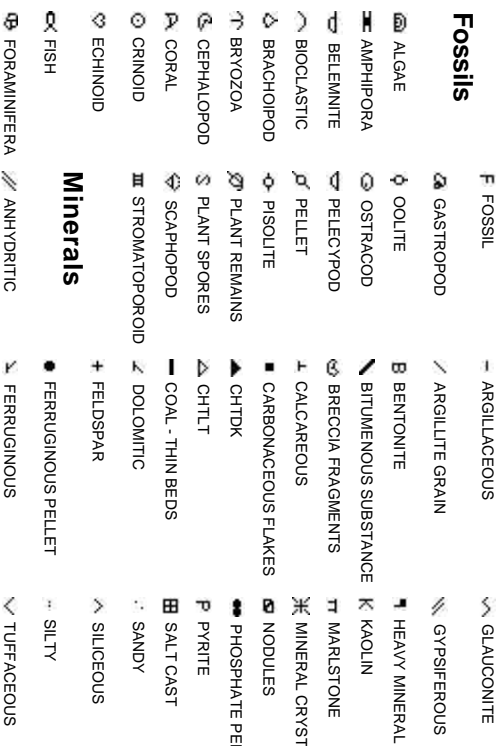
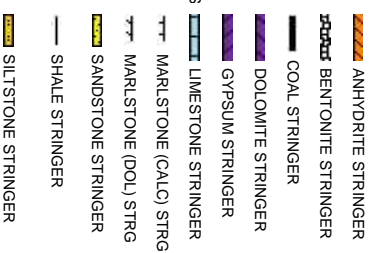


Rock Types



Accessories

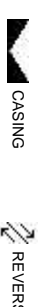
Fossils

**Stringer**

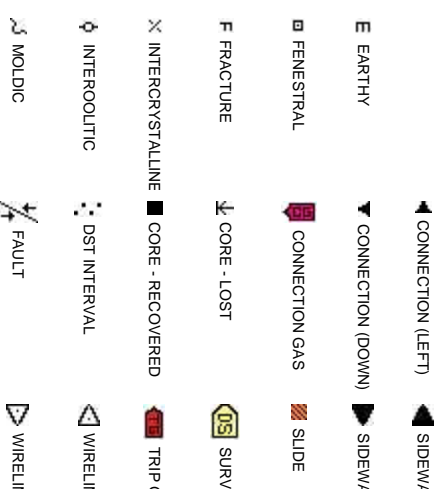
Other



Engineering



Porosity



er Symbols

ORMATION TOP L LITHOGRAPHIC

Rounding

HOW MX MICROXLN

PTH A ANGULAR MS MUDSTONE

L FAULT R ROUNDED PS PACKSTONE

OW B SUBANG WS WACKESTONE

JRNED STRATA T SUBRND

Sorting

SE FAULT

Textures

ALL CORE (LEFT) M MODERATE

ALL CORE (RIGHT) BS BOUNDSTONE P POOR

C CHALKY W WELL

EY CX CRYPTOXLN

EGAS E EARTHY

NE TESTED - LEFT FX FINELYXLN

NE TESTED - RT ES GRANSTONE

ConnectionGas(Vert)

Curve/Survey Data
ROP —
Gamma —

ROP SCALE: 0-1000 ft/hr
GAMMA SCALE: 0-300 api

MW 10.05 / VIS 60 IN
MW 10.05 / VIS 60 OUT

ROP (ft/hr)
Gamma (API)

Gaps in Gamma Data due to
Rapid Drilling Rate

GAS SCALE: 0 - 900 units

236 ft/hr

Continued from Vertical Mudlog

Total Gas & Chromatograph
GAS —
C1 - - -
C2 - - -
C3 - - -
C4 - - -

Depth

% Lithology

Well Bore
TVD —

Images

TVD SCALE: 7000'-8600'

7000

7000

MD: 7,629'
INC: 19.53°
AZM: 203.62°
TVD: 7,272.37'
VS: 2,003.88'

TVD (ft)

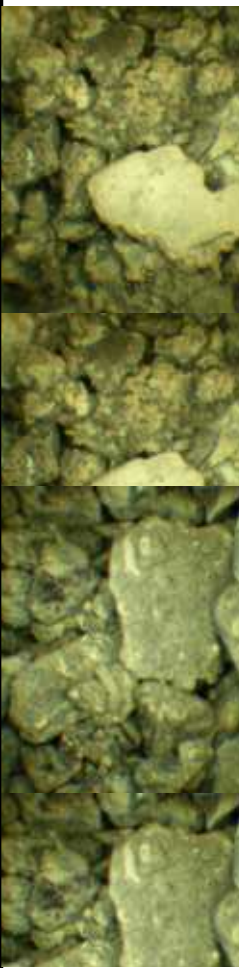
TVD (ft)

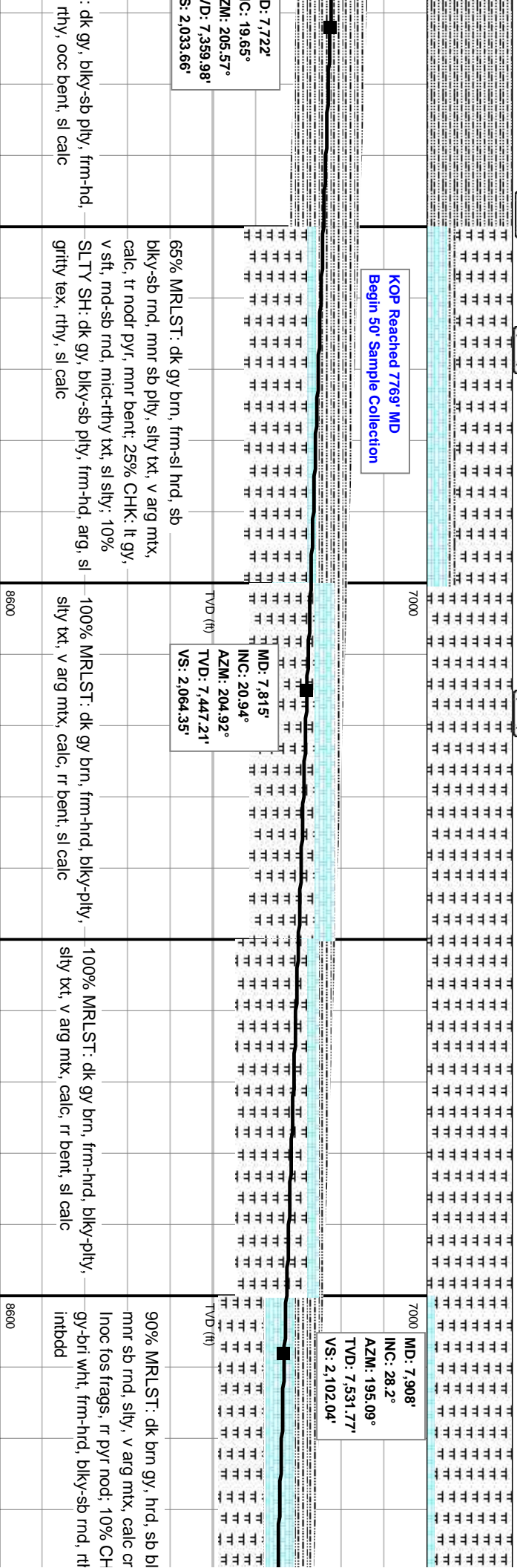
100% SLTY SH: med dk gy-dk gy brn, sb blk-nd, hd frm, arg, silty
tex, rthy, sl calc, rr bent

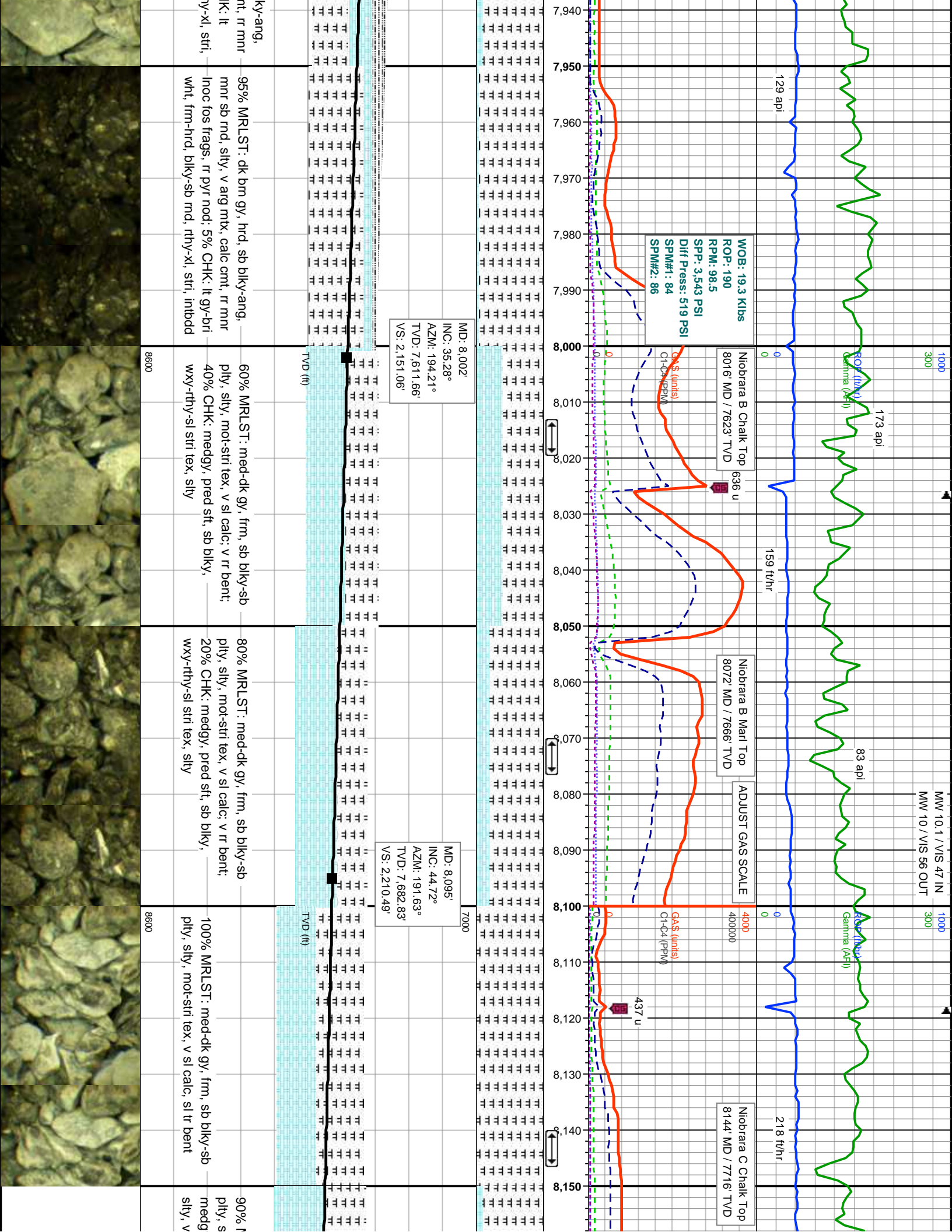
100% SLTY SH
arg, sl gritty tex,

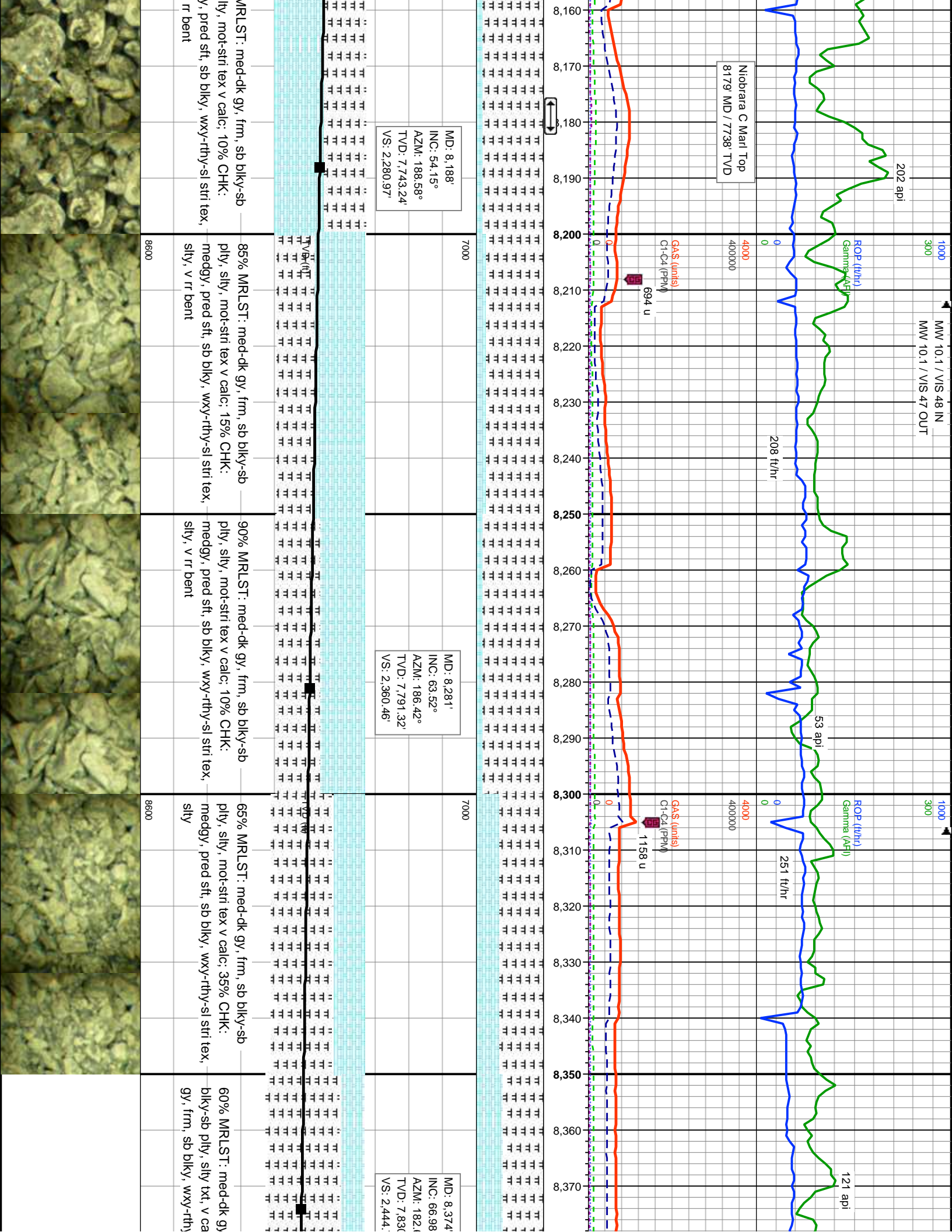
8600

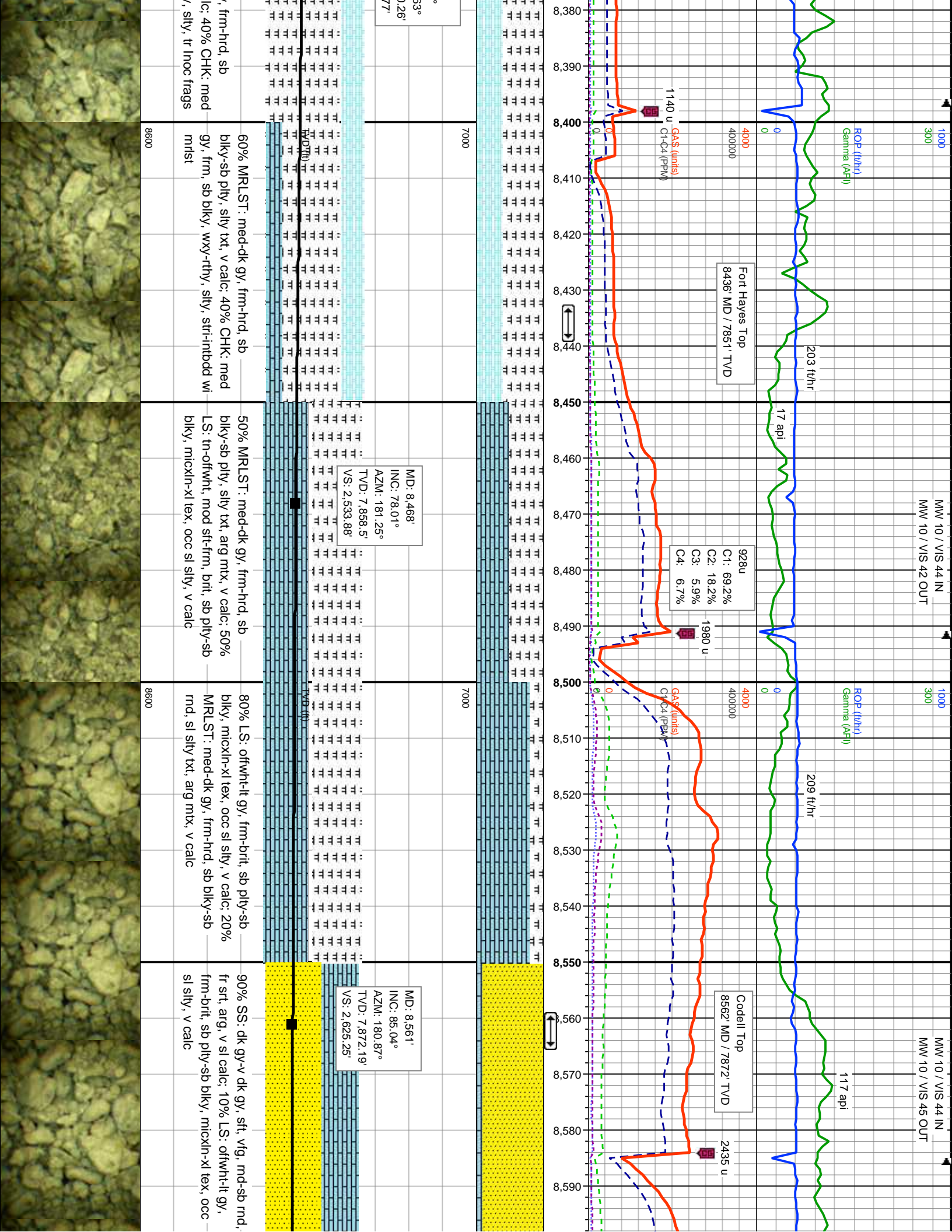
8600

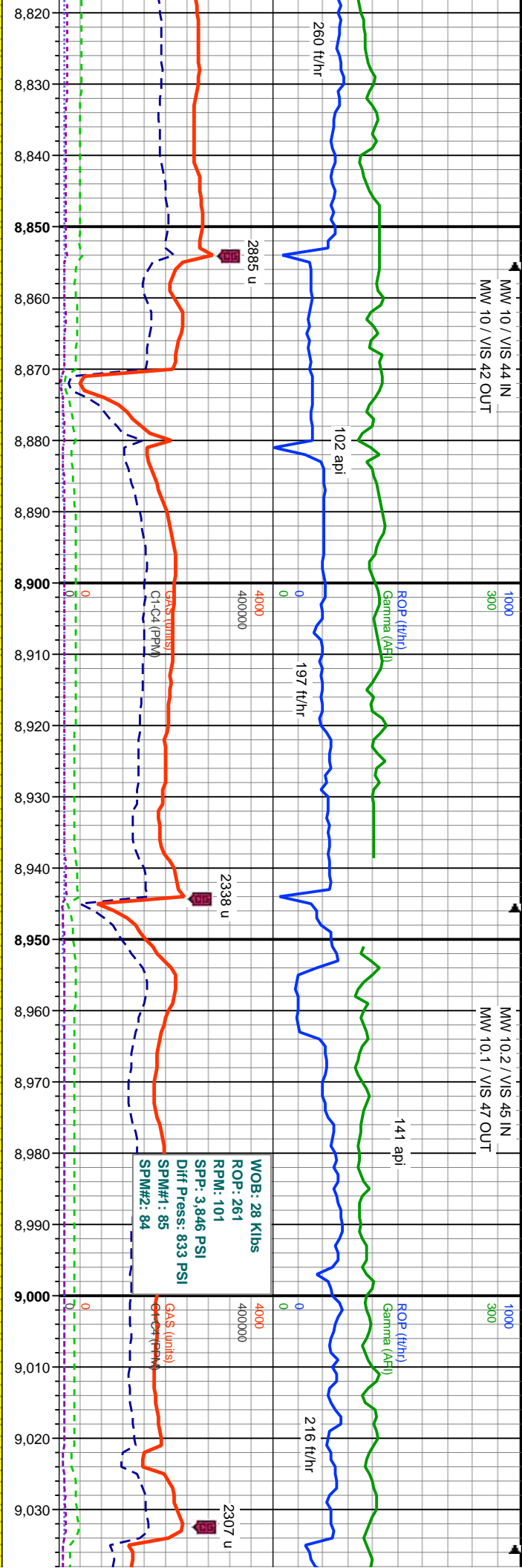












MD: 8,831'
INC: 89.48°
AZM: 179.74°
TVD: 7,876.7'
VS: 2,893.51'

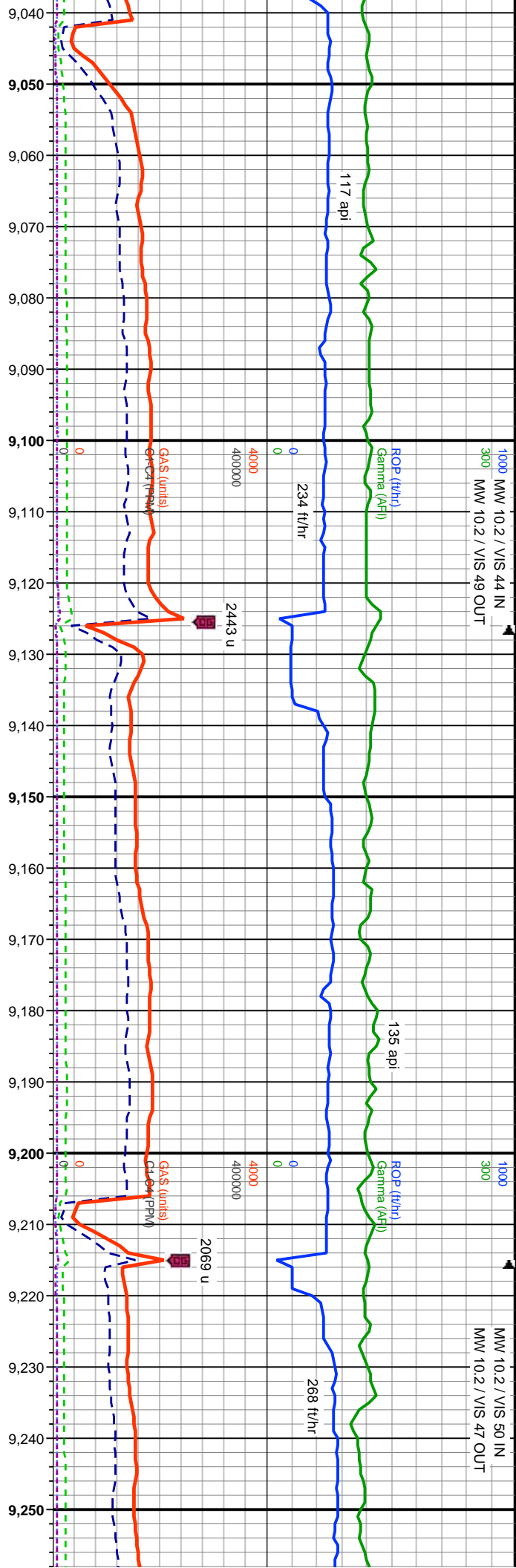
MD: 8,920'
INC: 89.42°
AZM: 179.59°
TVD: 7,877.55'
VS: 2,981.7'

MD: 9,010'
INC: 90.06°
AZM: 179.32°
TVD: 7,877.96'
VS: 3,070.84'

dk gy-v dk gy, frm-sl hrd, v f gr, md-sb blk, fr-mod srt, fr por, calc shly frags

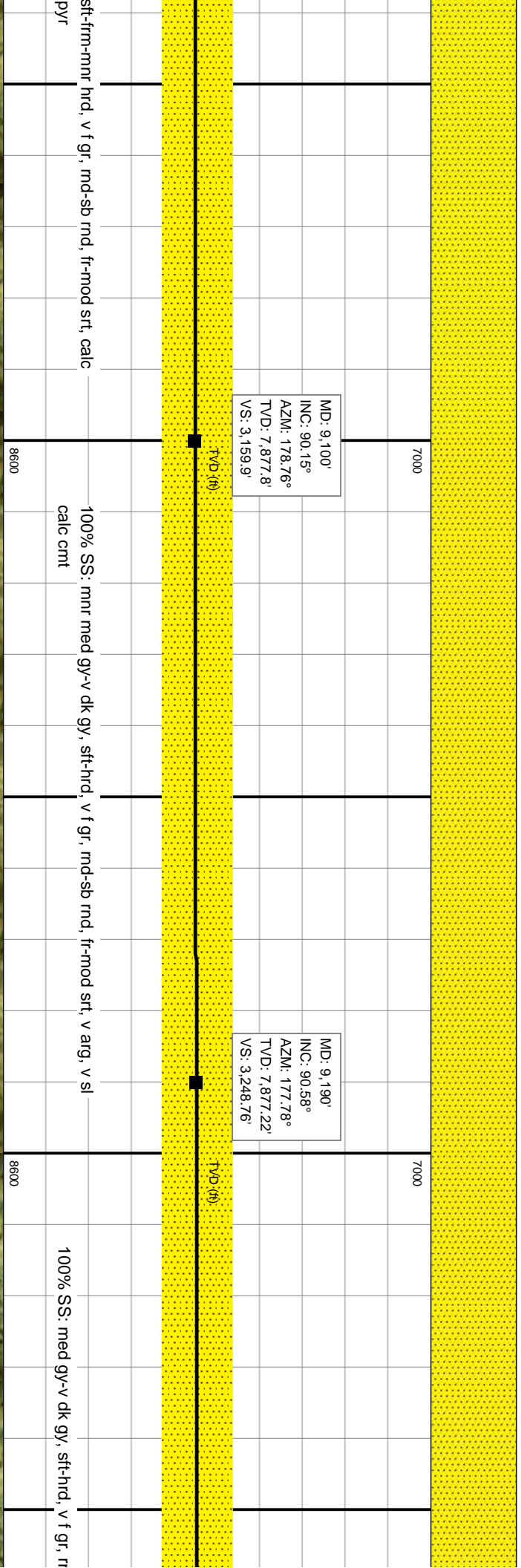
100% SS: med gy-v dk gy, frm-sl hrd, v f gr, md-sb blk, fr-mod srt, calc cnt, mnrlse qtz grs

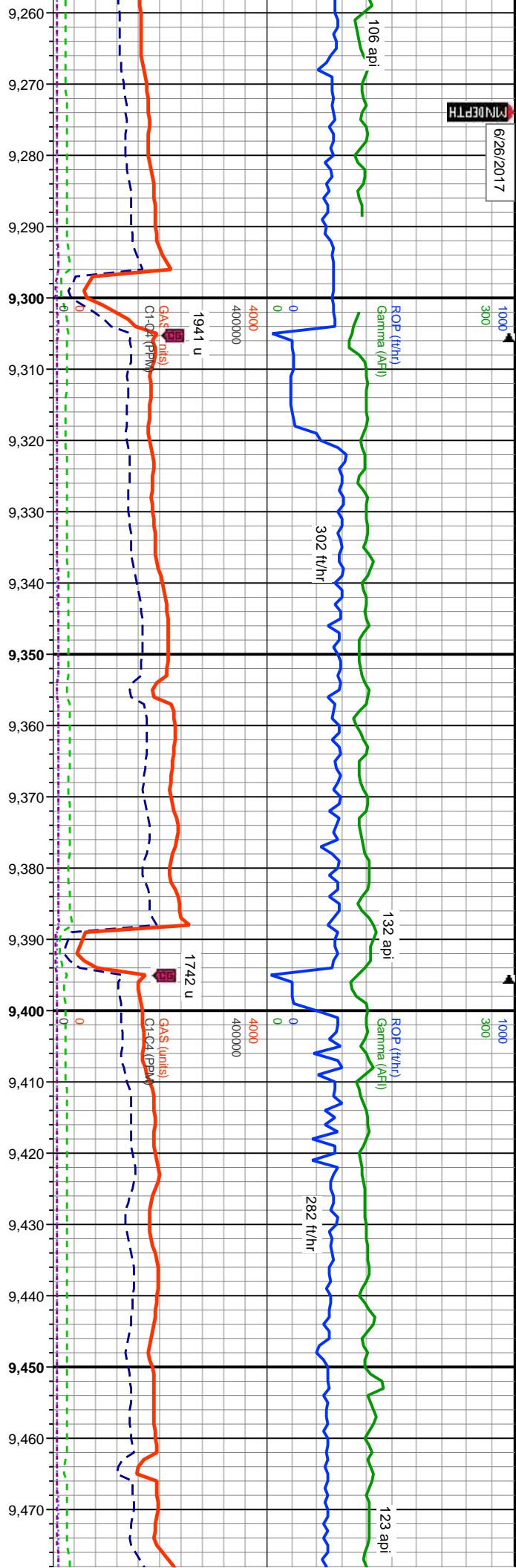
100% SS: med gy-v dk gy, cnt, mnrlse qtz grs, tr blk



MD: 9,100'
INC: 90.15°
AZM: 178.76°
TVD: 7,877.8'
VS: 3,159.9'

MD: 9,190'
INC: 90.58°
AZM: 177.78°
TVD: 7,877.22'
VS: 3,248.76'

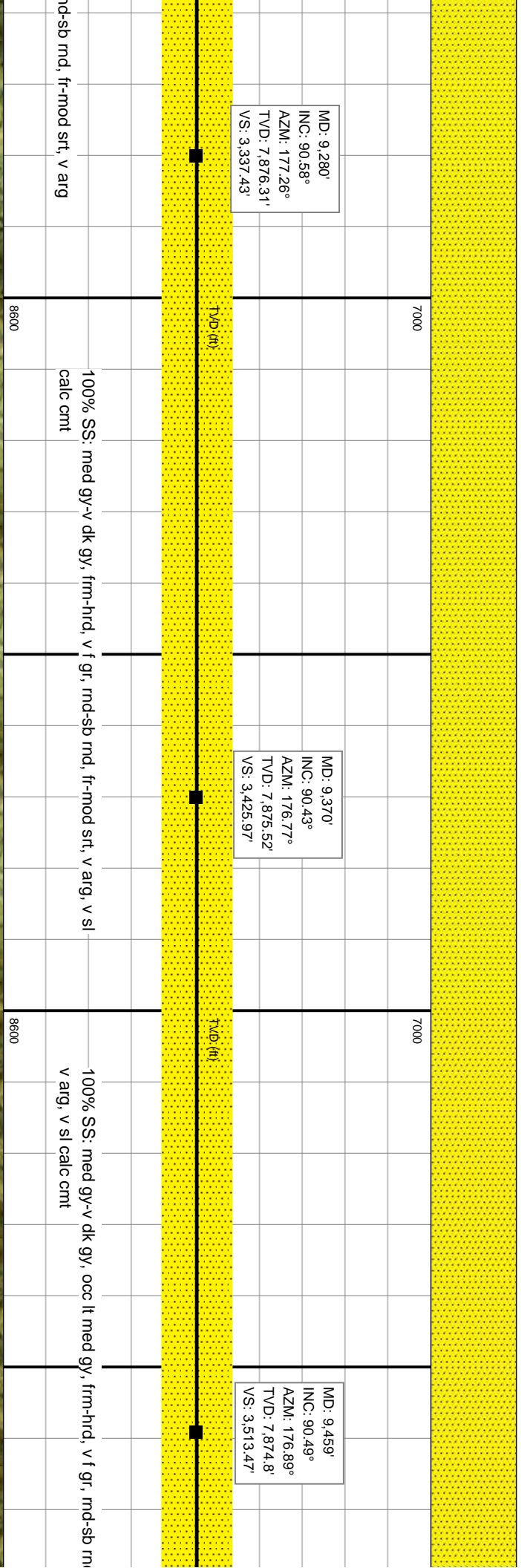


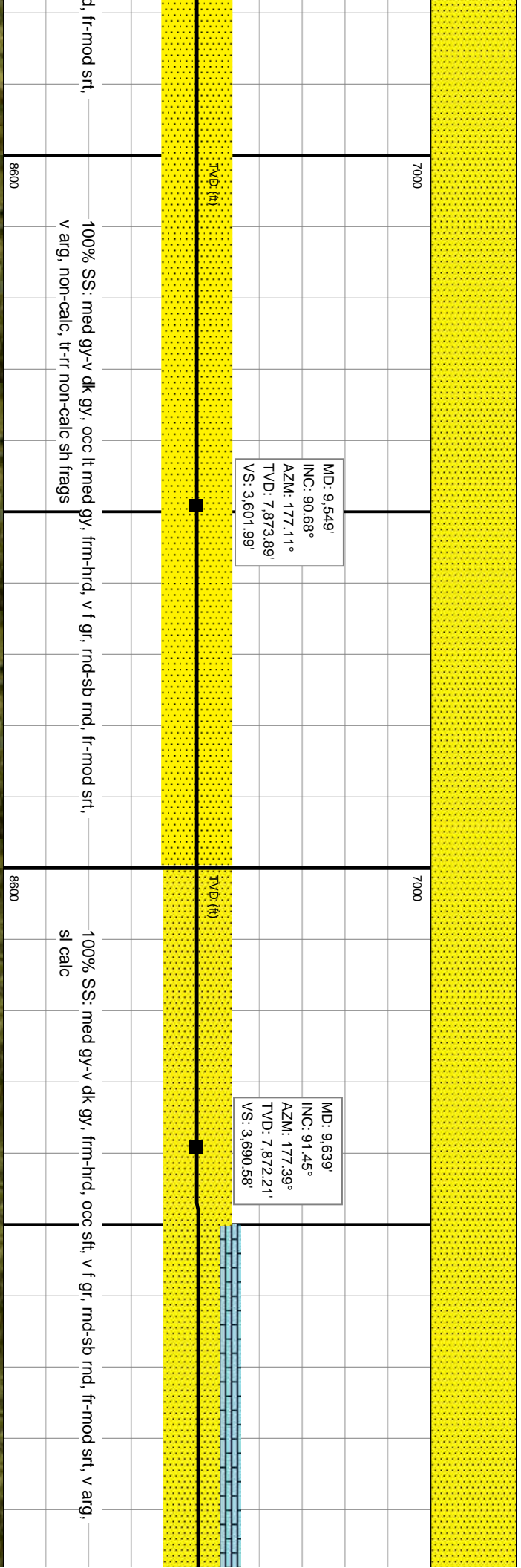
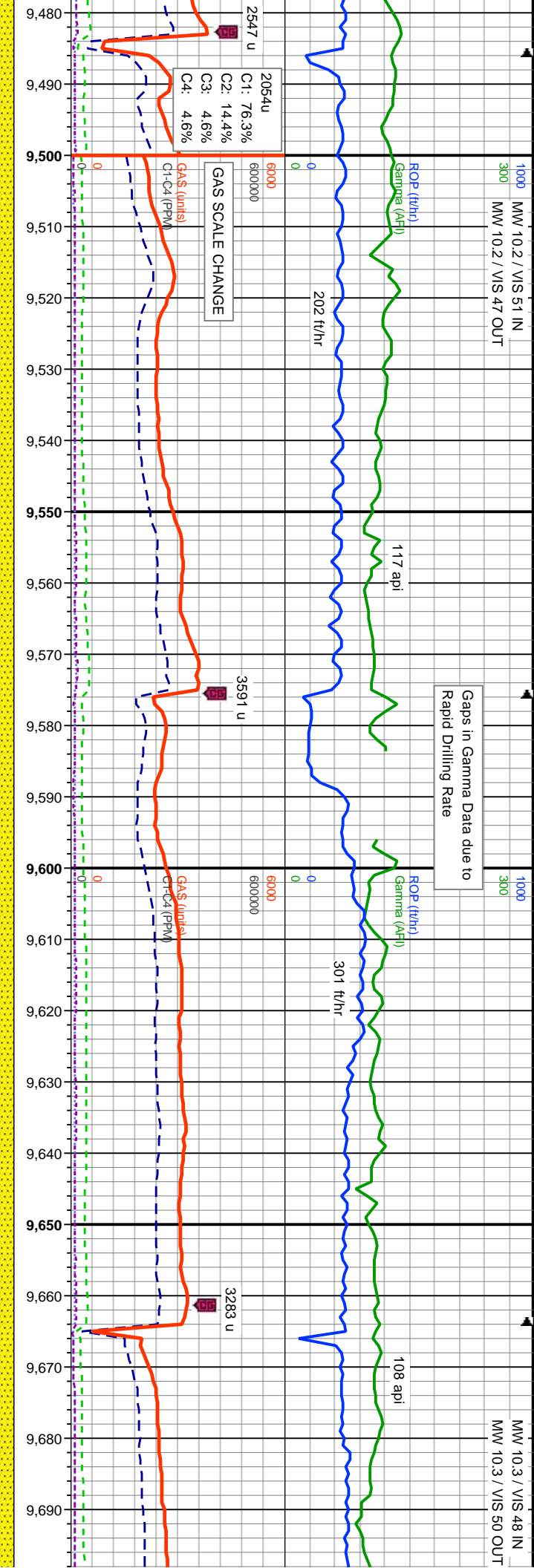


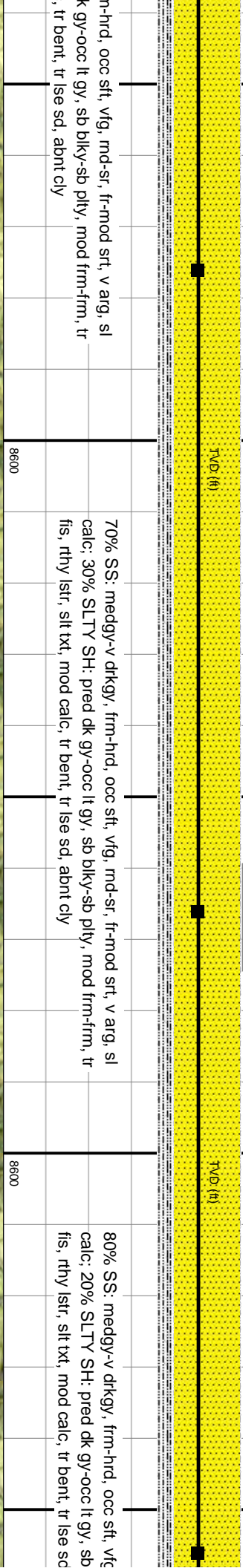
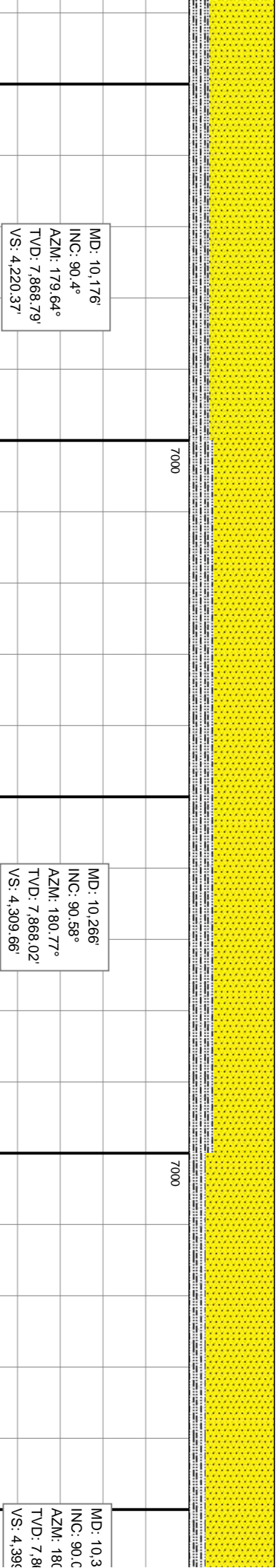
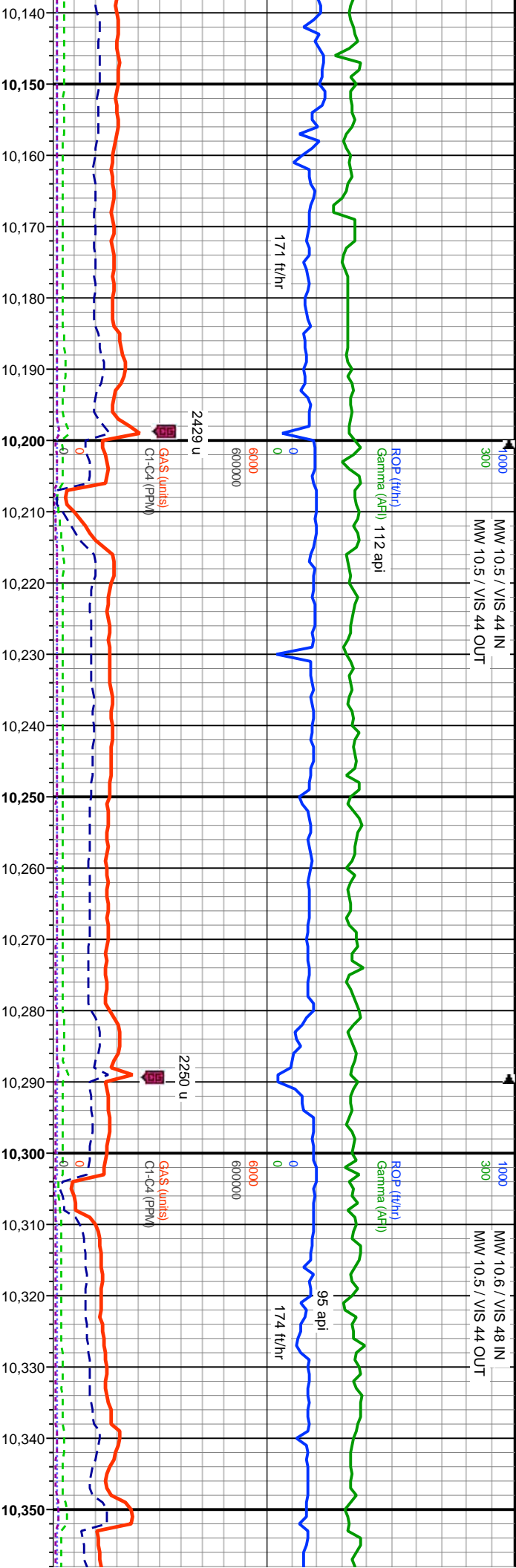
MD: 9,280'
INC: 90.58°
AZM: 177.26°
TVD: 7,876.31'
VS: 3,337.43'

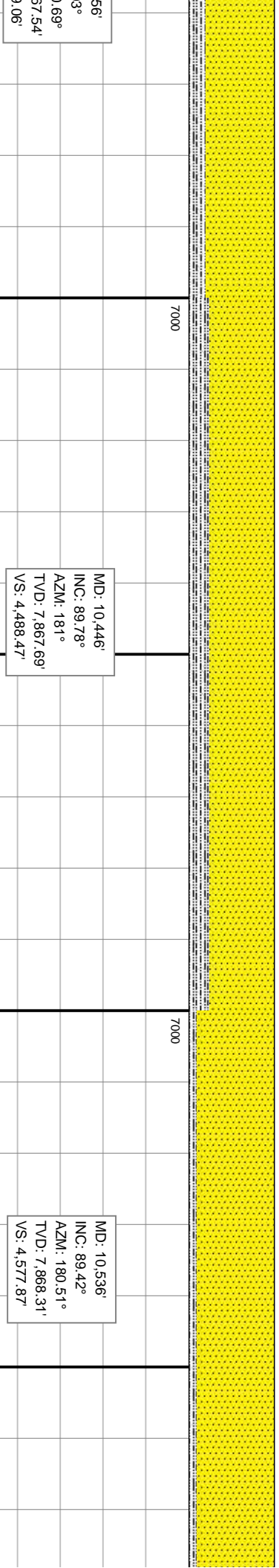
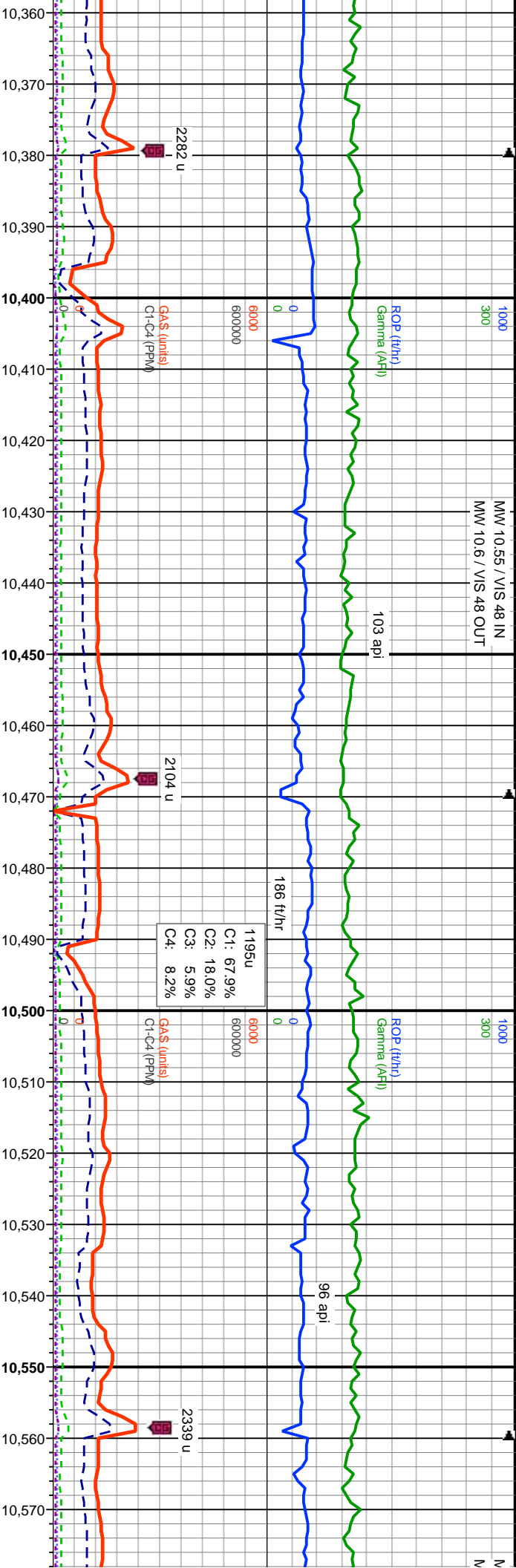
MD: 9,370'
INC: 90.43°
AZM: 176.77°
TVD: 7,875.52'
VS: 3,425.97'

MD: 9,459'
INC: 90.49°
AZM: 176.89°
TVD: 7,874.8'
VS: 3,513.47'









md-sr, fr-mod srt, v arg, sl
bkly-sb plty, mod frm-frm, tr
abt cly

75% SS: medgy-v drkgy, frm-hrd, occ sft, vfg, md-sr, fr-mod srt, v arg, sl
calc; 25% SLTY SH: pried dk gy-occ lt gy, sb bkly-sb plty, mod frm-frm, tr
fis, rthy lstr, silt txt, mod calc, tr bent, tr lse sd, abnt cly

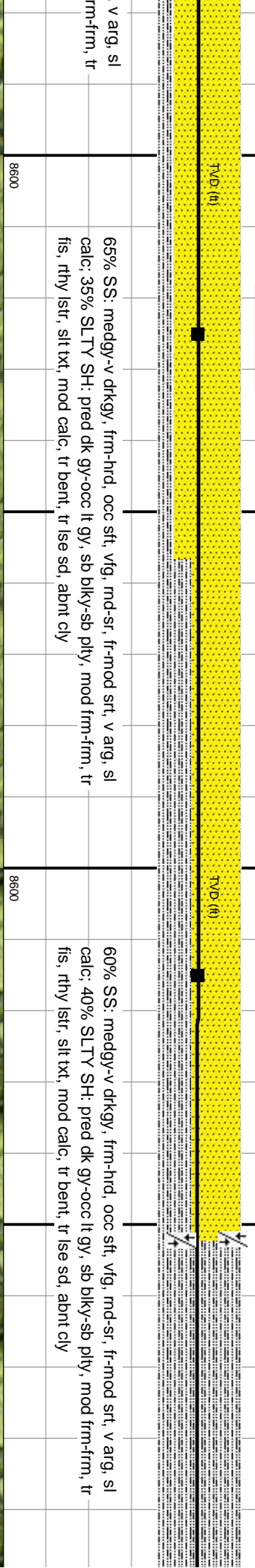
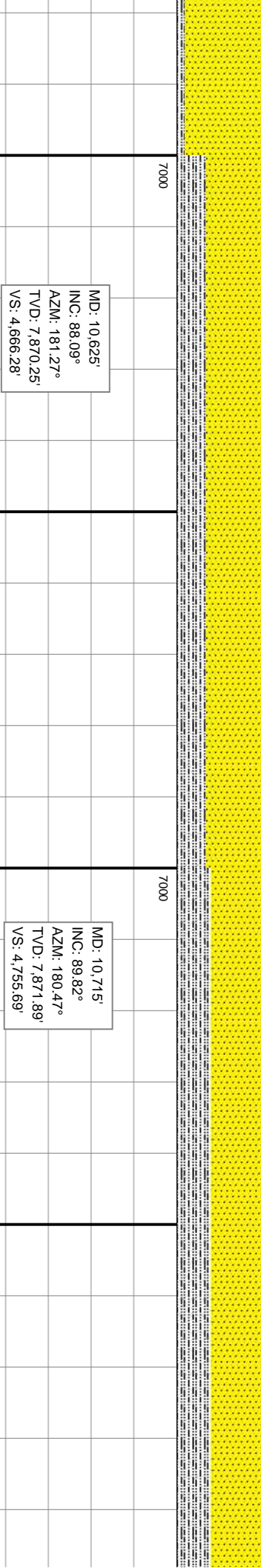
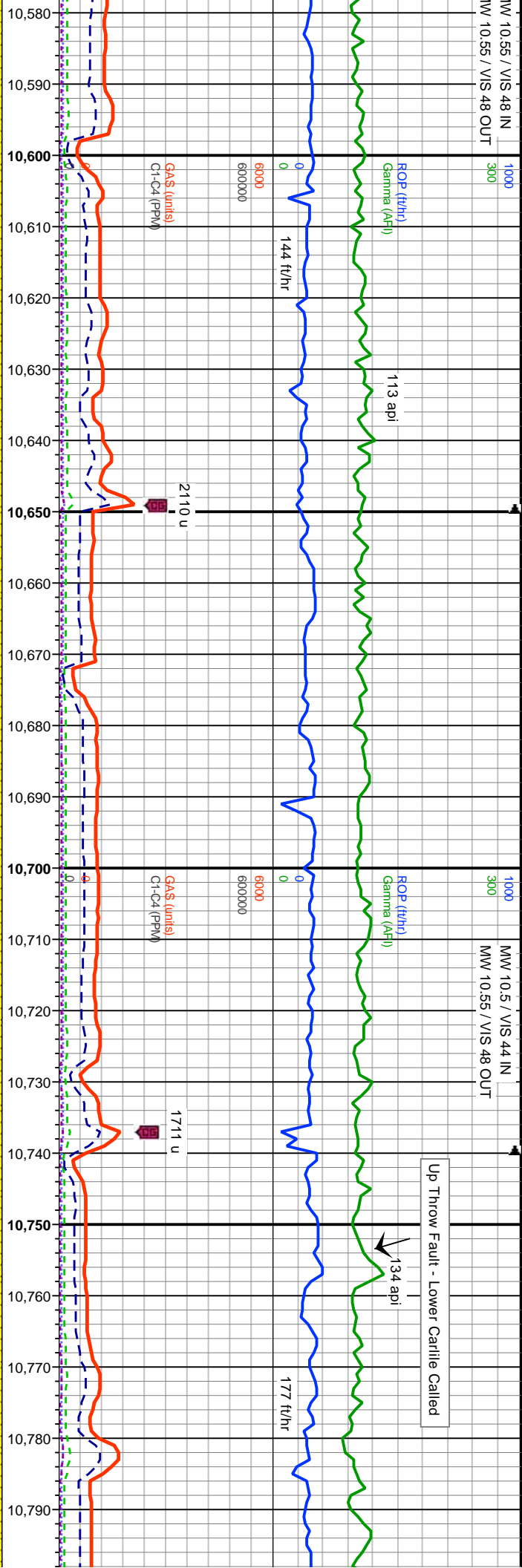
90% SS: medgy-v drkgy, frm-hrd, occ sft, vfg, md-sr, fr-mod srt, v arg, sl
calc; 10% SLTY SH: pried dk gy-occ lt gy, sb bkly-sb plty, mod frm-frm, tr
fis, rthy lstr, silt txt, mod calc, tr bent, tr lse sd, abnt cly

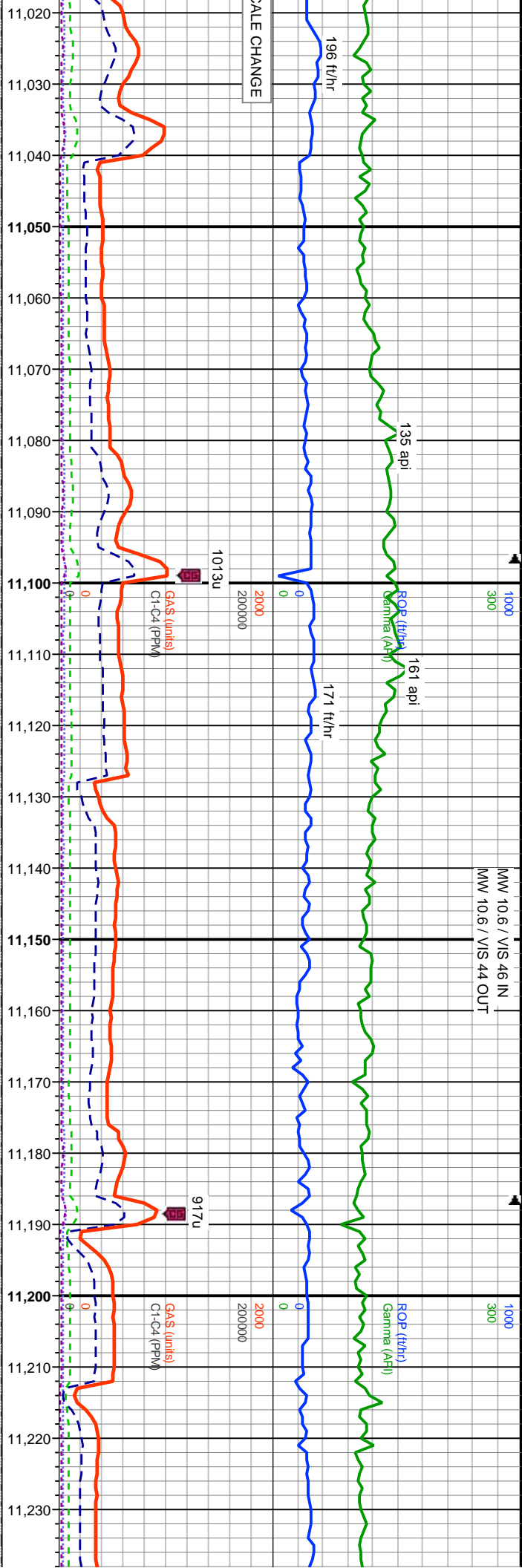
8600

8600

8600

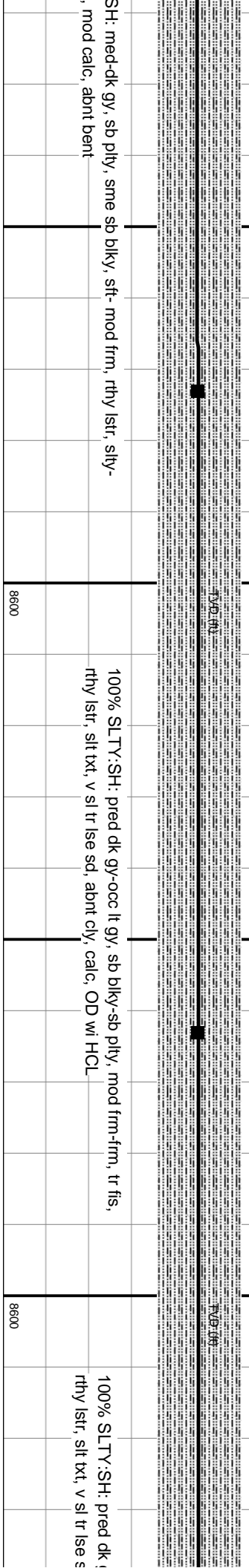






MD: 11,073'
INC: 90.8°
AZM: 180.33°
TVD: 7,871.85'
VS: 5,110.53'

MD: 11,163'
INC: 89.82°
AZM: 180.99°
TVD: 7,871.36'
VS: 5,199.91'



SH: med-dk gy, sb pily, sme sb blkly, sft- mod frm, rthy lstr, silty-
, mod calc, abnt bent

100% SLTY:SH: pred dk gy-occ lt gy, sb blkly-sb pily, mod frm-frim, tr fis,
rthy lstr, silt txt, v sl tr lse sd, abnt cly, calc, OD w/ HCL

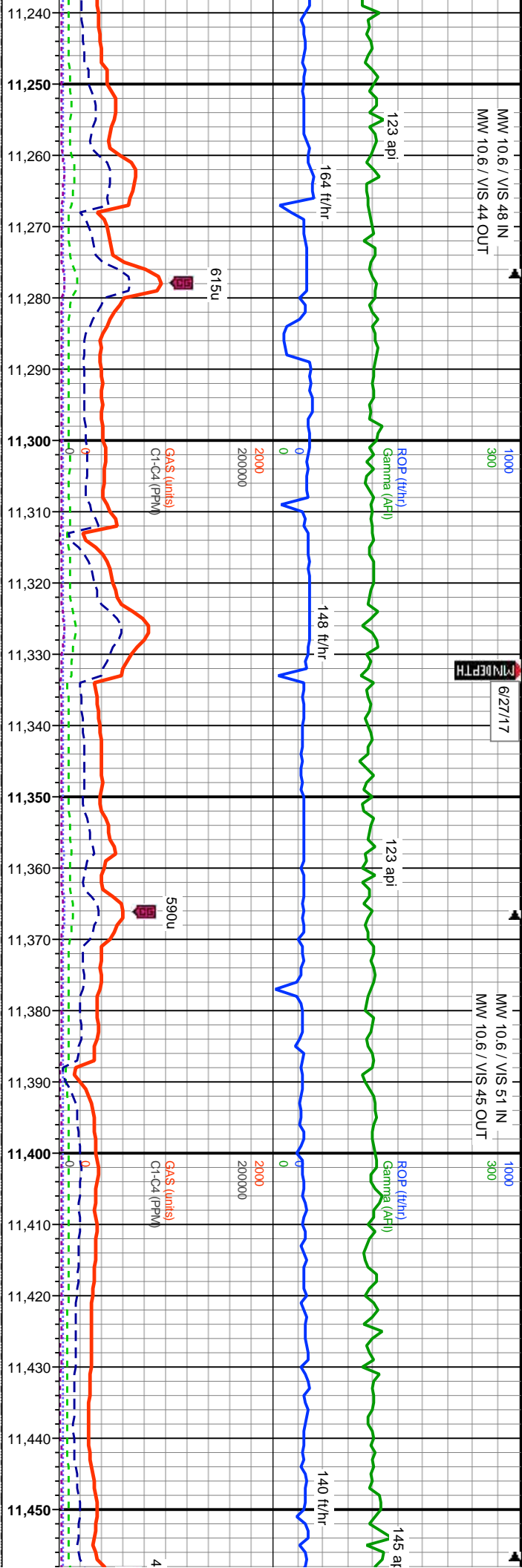
100% SLTY:SH: pred dk
rthy lstr, silt txt, v sl tr lse s



MW 10.6 / VIS 48 IN
MW 10.6 / VIS 44 OUT

6/27/17
DEPTH

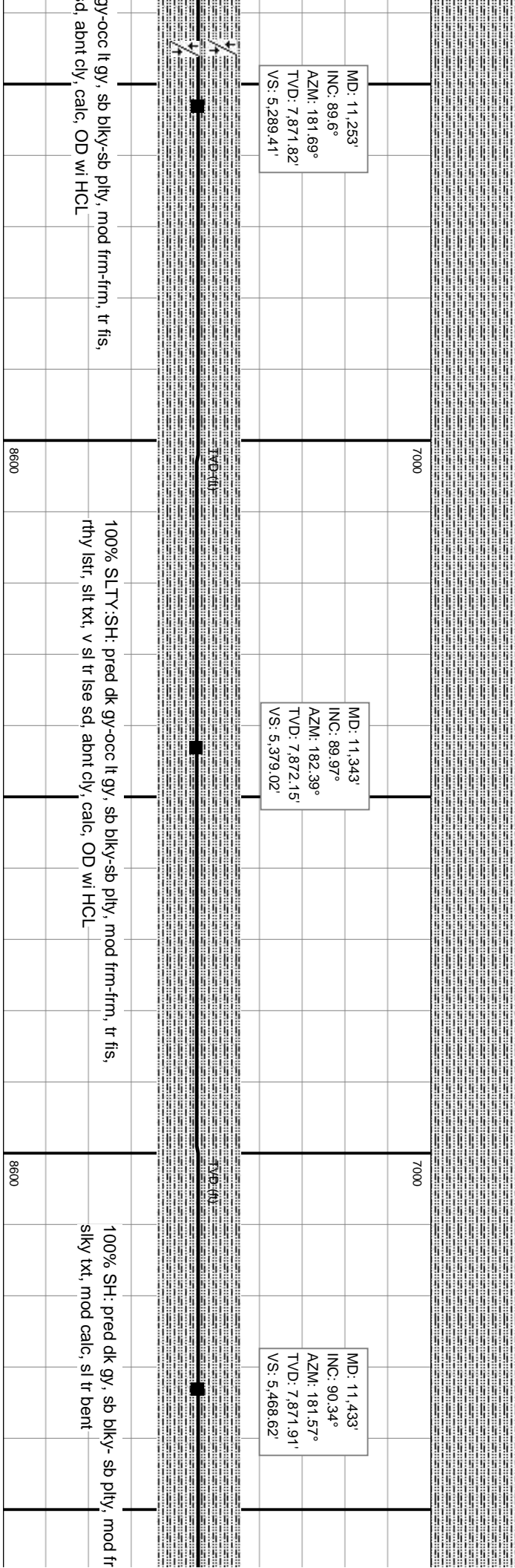
MW 10.6 / VIS 51 IN
MW 10.6 / VIS 45 OUT

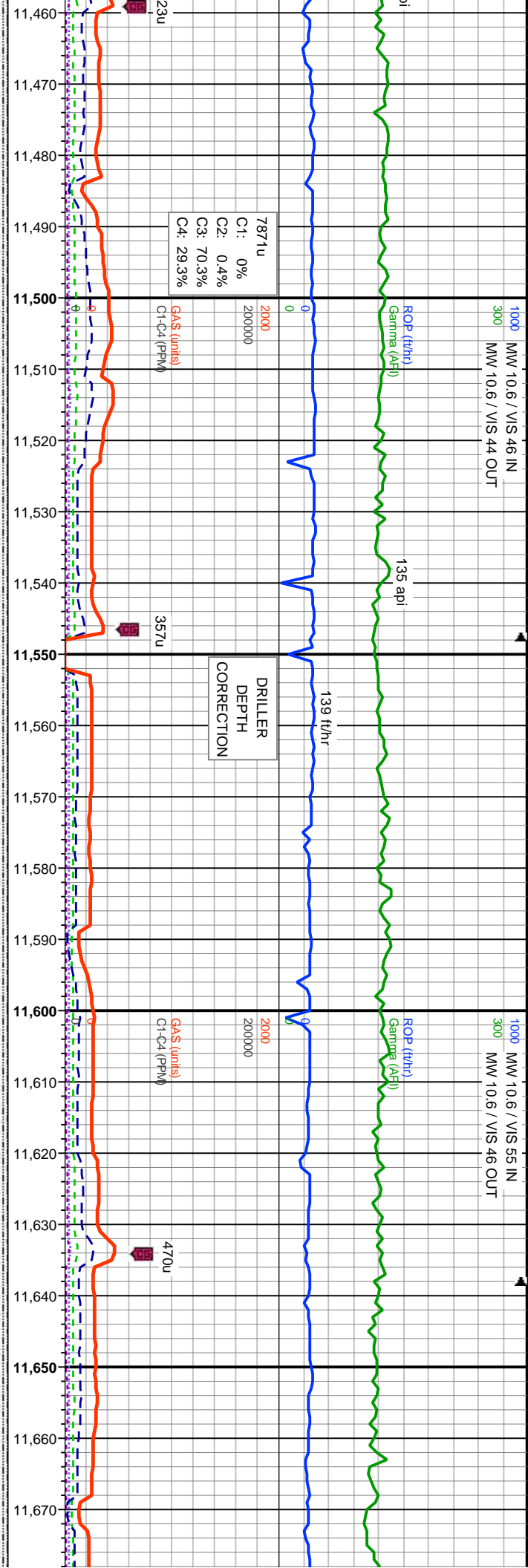


MD: 11,253'
INC: 89.6°
AZM: 181.69°
TVD: 7,871.82'
VS: 5,289.41'

MD: 11,343'
INC: 89.97°
AZM: 182.39°
TVD: 7,872.15'
VS: 5,379.02'

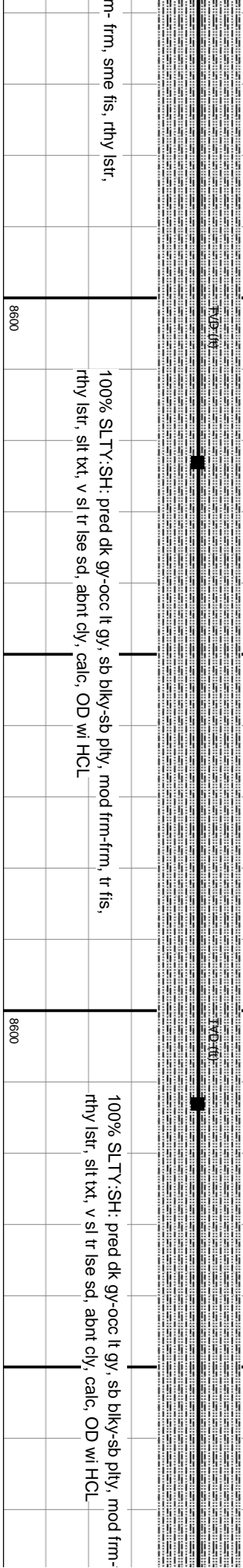
MD: 11,433'
INC: 90.34°
AZM: 181.57°
TVD: 7,871.91'
VS: 5,468.62'





MD: 11,523'
INC: 91.05°
AZM: 180.87°
TVD: 7,870.82'
VS: 5,558.1'

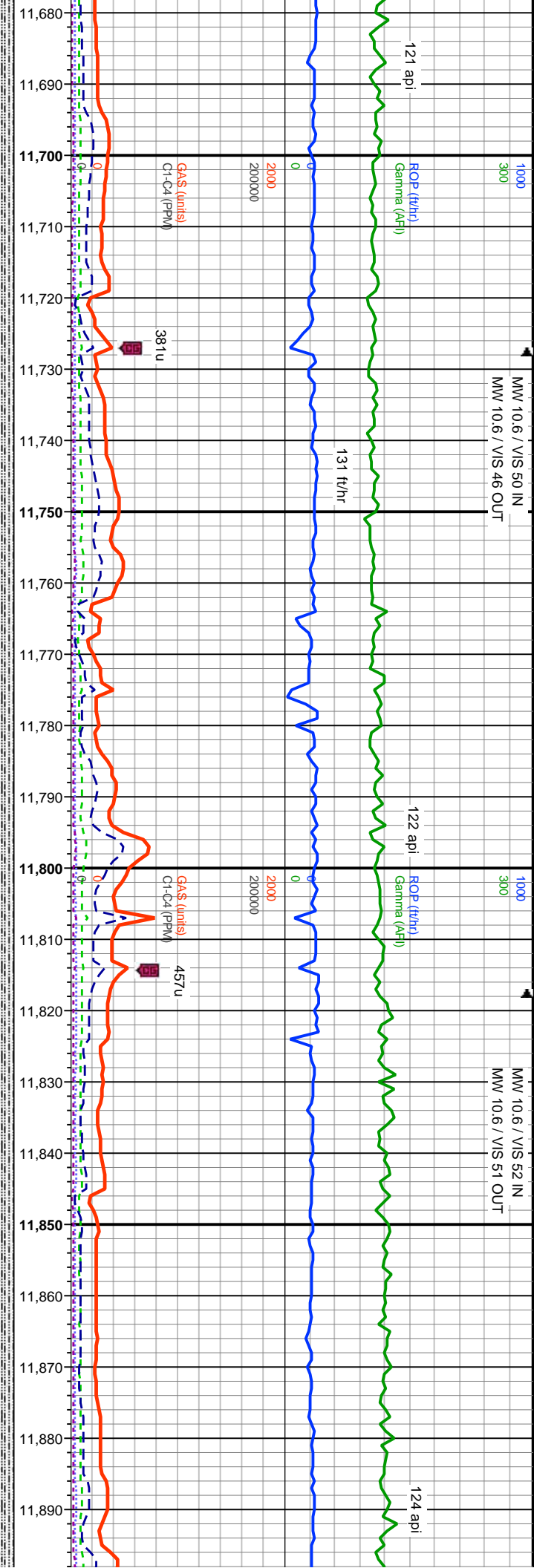
MD: 11,613'
INC: 91.23°
AZM: 180.55°
TVD: 7,869.03'
VS: 5,647.48'



100% SLTY:SH: pred dk gy-occ lt gy, sb blk-ly-sb pily, mod frm-frm, tr fis,
rthy lstr, silt txt, v sl tr lse sd, abnt cly, calc, OD w/ HCL

100% SLTY:SH: pred dk gy-occ lt gy, sb blk-ly-sb pily, mod frm-frm,
rthy lstr, silt txt, v sl tr lse sd, abnt cly, calc, OD w/ HCL

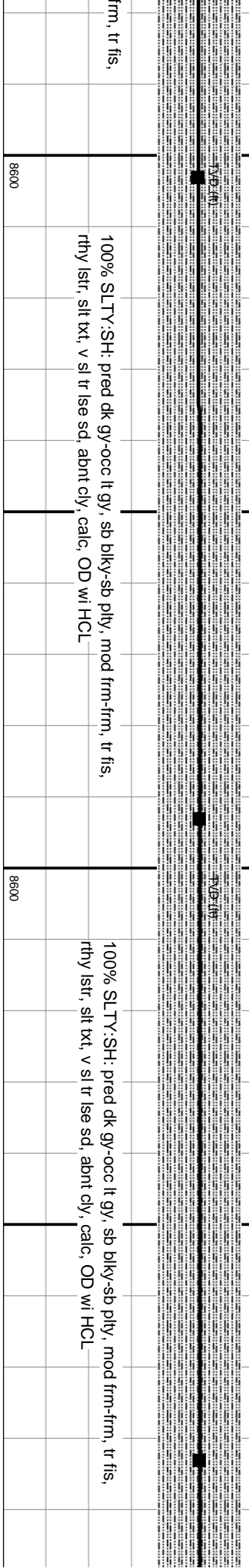


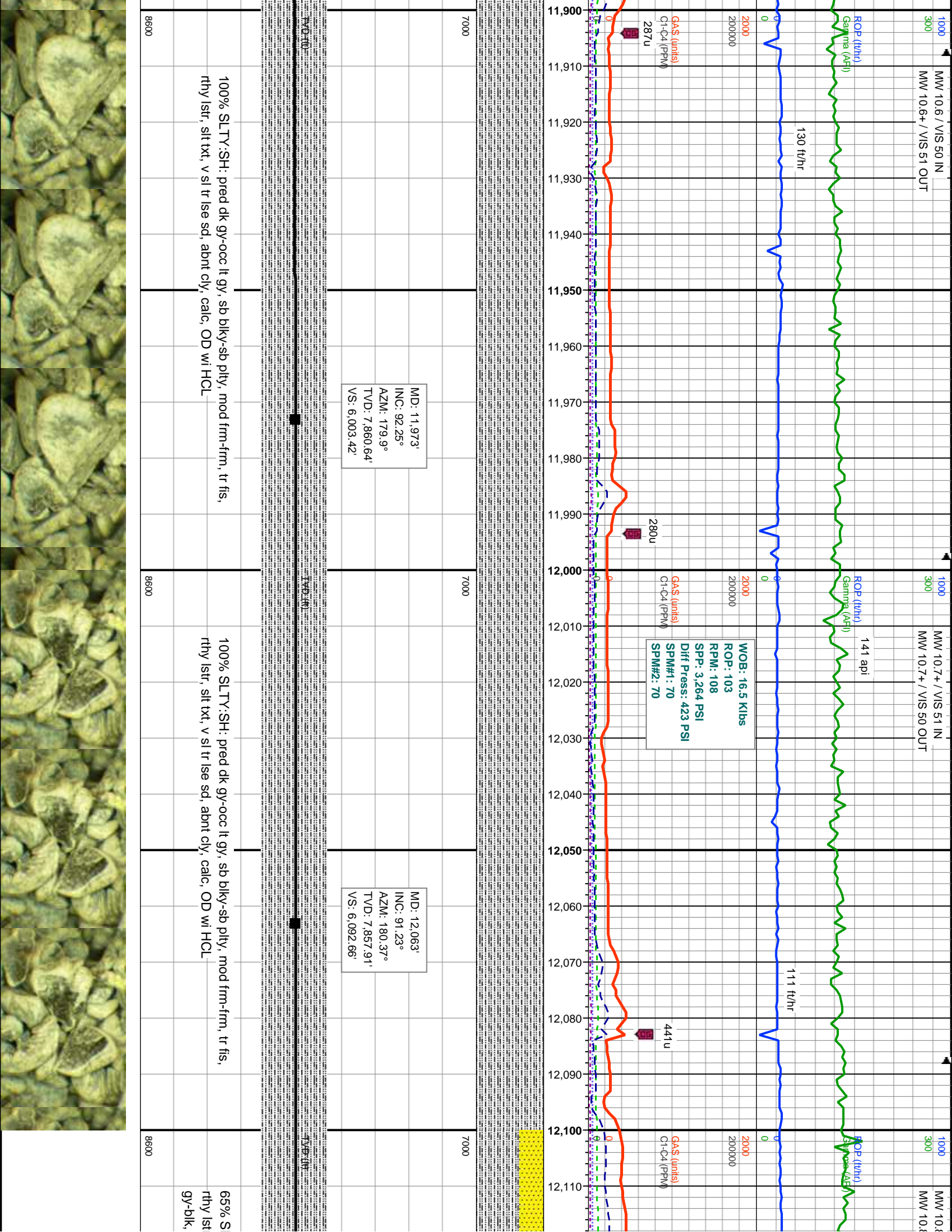


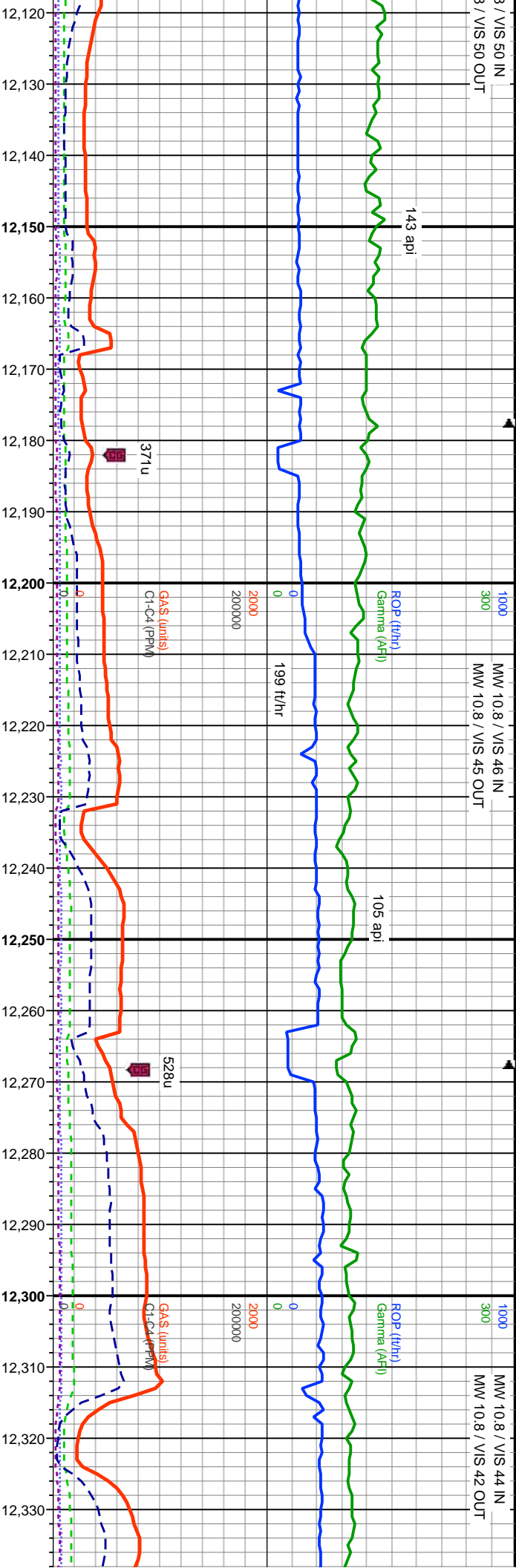
MD: 11,703'
INC: 90.8°
AZM: 177.8°
TVD: 7,867.43'
VS: 5,736.54'

MD: 11,793'
INC: 91.86°
AZM: 178.08°
TVD: 7,865.33'
VS: 5,825.3'

MD: 11,883'
INC: 90.92°
AZM: 179.48°
TVD: 7,863.13'
VS: 5,914.26'



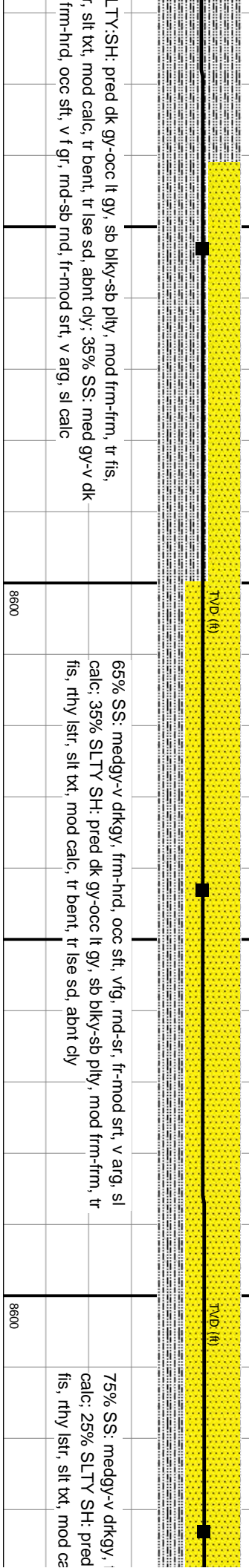




MD: 12,153'
INC: 92.09°
AZM: 181.21°
TVD: 7,855.3'
VS: 6,182.03'

MD: 12,243'
INC: 92.43°
AZM: 180.88°
TVD: 7,851.75'
VS: 6,271.42'

MD: 12,333'
INC: 90.4°
AZM: 179.8°
TVD: 7,849'
VS: 6,360.7'



LTy:SH: pred dk gy-occ lt gy, sb blk-y-sb ply, mod frm-frm, tr fis,
f, sit txt, mod calc, tr bent, tr ise sd, abnt cly; 35% SS: med gy-v-dk
frm-hrd, occ sft, v f gr, md-sb rnd, fr-mod srt, v arg, sl calc

65% SS: medgy-v drkgy, frm-hrd, occ sft, vfg, rnd-sr, fr-mod srt, v arg, sl
calc; 35% SLTY SH: pred dk gy-occ lt gy, sb blk-y-sb ply, mod frm-frm, tr
fis, rthy lstr, sit txt, mod calc, tr bent, tr ise sd, abnt cly

75% SS: medgy-v drkgy, i
calc; 25% SLTY SH: pred
fis, rthy lstr, sit txt, mod ce

