



Petroshare Corporation

PRODUCTION POST JOB REPORT

Shook 3-10-2NAH 05-001-09972
S:3 T:1S R:67W Adams CO

CallSheet #: 1045
Proposal #: 13576



PRODUCTION Post Job Report

Attention: Mr. Bill Lloyd | (303) 500-1160 | blloyd@petroshare.com
Petroshare Corporation
9635 Maroon Circle, Ste 400 | Englewood, CO 80112

Dear Mr. Lloyd,

Thank you for the opportunity to provide cementing services on this well. BJ Services strives to achieve complete customer satisfaction. If you have any questions regarding the services or data provided, please contact BJ Services at any time.

Sincerely,

Oscar Medrano

Technical Specialist-II | (307) 996-6222 | Oscar.Medrano@bjservices.com

Field Office 1716 East Allison Rd., Cheyenne WY, 82007
Phone: (307) 638-5585

Sales Office 475 17th St. Suite 460 Denver Co., 80202
Phone: (303) 296-1158



Table of Contents

1 Job Details & Summary	3
1.1 Geometry	3
1.2 Equipment / People	3
1.3 Timing	3
1.4 General Job Information	3
1.5 Well Fluid Details	3
1.6 Job Details	3
1.7 Job Details (cont.)	3
1.8 Circulation	4
1.9 Job Execution Information	4
1.10 Job Fluid Details	4
2 Job Logs	5
3 Water Analysis	7
4 Pump Diagrams	7
5 Field Ticket	8
5.1 Service Charges	8
5.2 Material Charges	8
5.3 Grand Total	8

1 Job Details & Summary

1.1 Geometry

Type	Function	OD (in)	ID (in)	Weight (lb/ft)	Thread	Top (ft)	Bottom (ft)	Excess (%)
Casing	Outer	9.625	8.921	36	n/a	0	1816	0
Open Hole	Outer	n/a	8.5	n/a	n/a	1816	13635	15
Casing	Inner	5.5	4.778	20	n/a	0	13635	0

1.2 Equipment / People

Unit Type	Unit	Employee #1	Employee #2	Mileage
Silo	654			
Silo	664			
Bulk Trailer	508	Borst, David		90
Cement Pump	103	Martinez, Michael		90
Light Duty Pickups	6	Acuna, Roger	Casciato, Luke	90

1.3 Timing

Event	Date/Time
Call Out	7/22/2017 02:00
Depart Facility	7/22/2017 04:00
On Location	7/22/2017 06:00
Rig Up Iron	7/22/2017 08:00
Job Started	7/22/2017 15:09
Job Completed	7/22/2017 18:12
Rig Down Iron	7/22/2017 18:30
Depart Location	7/22/2017 19:30

1.4 General Job Information

Metrics	Value
Well Fluid Density	10.8 lb/gal
Well Fluid Type	OBM
Rig Circulation Vol	983 bbls
Rig Circulation Time	3 hours
Calculated Displacement	301 bbls
Actual Displacement	301 bbls
Total Spacer to Surface	40 bbls
Total CMT to Surface	51 bbls

1.5 Well Fluid Details

Metrics	Value
Plastic Viscosity	25
Yield Point	18
10 sec. SGS	10
10 min. SGS	21
30 min. SGS	29
Filtrate	10
Flow Line Temp.	135

1.6 Job Details

Metrics	Value
Flare Prior to Job	Yes
Flare Prior to Job	4737 units
Flare During Job	No
Flare at End of Job	No
Well Full Prior to Job	Yes
Well Fluid Density Into Well	10.8 lb/gal
Well Fluid Density Out of Well	10.8 lb/gal

1.7 Job Details (cont.)

Metrics	Value
BHCT	228 °F
BHST	228 °F



1.8 Circulation

Lost Circulation Experienced
No

1.9 Job Execution Information

Job	Fluid	Product	Function	Density (lb/gal)	Yield (ft ³ /sk)	Water Rq. (gal/sk)	Water Rq. (gal/bbl)	Volume (sks)	Volume (bbl)	Top (ft)
1	1	CD Spacer	Spacer	11.00			32.73		40.00	0
1	2	ALTCem P100-X2	Lead	12.50	2.07	11.81		902.00	332.61	0
1	3	ALTCem P50-X1	Tail	13.50	1.47	7.43		1185.00	311.22	7047
1	4	Water	DisplacementFinal	8.33			42.00		301.00	0

1.10 Job Fluid Details

Job	Fluid	Type	Fluid	Product	Function	Conc.	Uom
1	1	Spacer	CD Spacer	ASR-20	StrengthRetrogression	179.68	lb/bbl
1	1	Spacer	CD Spacer	AR-31	Retarder	0.79	lb/bbl
1	1	Spacer	CD Spacer	ASF-20	Surfactant	0.50	gal/bbl
1	1	Spacer	CD Spacer	ASF-80	Surfactant	0.50	gal/bbl
1	1	Spacer	CD Spacer	AVS-10	Viscosifier	0.80	lb/bbl
1	2	Lead	ALTCem P100-X2	AC3-10	Cement	100.00	%
1	2	Lead	ALTCem P100-X2	ABX-30	BondEnhancer	0.40	%BWOB
1	2	Lead	ALTCem P100-X2	ADF-11	Defoamer	0.30	%BWOB
1	2	Lead	ALTCem P100-X2	AFL-10	FluidLoss	0.30	%BWOB
1	2	Lead	ALTCem P100-X2	AR-31	Retarder	0.20	%BWOB
1	2	Lead	ALTCem P100-X2	AVS-10	Viscosifier	0.10	%BWOB
1	3	Tail	ALTCem P50-X1	ACG-10	Cement	50.00	%
1	3	Tail	ALTCem P50-X1	AFA-10	Extender	50.00	%
1	3	Tail	ALTCem P50-X1	ADF-11	Defoamer	0.30	%BWOB
1	3	Tail	ALTCem P50-X1	AFL-50	FluidLoss	0.20	%BWOB
1	3	Tail	ALTCem P50-X1	AR-20	Retarder	0.10	%BWOB
1	3	Tail	ALTCem P50-X1	AVS-10	Viscosifier	0.10	%BWOB
1	3	Tail	ALTCem P50-X1	AVS-50	Viscosifier	2.00	%BWOB

2 Job Logs

Line	Event	Date (MM/DD/YY)	Time (HH:MM)	Density (lb/gal)	Pump Rate (bpm)	Pump Volume (bbls)	Pipe Pressure (psi)	Comment
1	Call Out	7/22/2017	02:00					Crew was called out to PetroShare production.
2	Pre-Convoy Meeting	7/22/2017	03:30					Crew conducted STEACS Journey management.
3	Depart Camp	7/22/2017	04:00					Crew heads to Petroshare location.
4	Arrive on Location	7/22/2017	06:00					Crew arrives on location, assess location for spotting equip.
5	STEACS	7/22/2017	06:15					Crew conducted STEACS briefing.
6	Rig Up	7/22/2017	08:00					Crew rigged up all iron and fitting for job.
7	Other	7/22/2017	12:30					Rig landed casing (5.5" p110 20#) circulated for 3 hours at 8bpm, for 980bbl. 850psi. Full returns
8	Pre-Job Meeting	7/22/2017	14:30					BJ Crew, Rig Crew, as well as customer rep. conducted safety meeting, and covered job procedure.
9	Start Job	7/22/2017	15:09					Crew begins job
10	Fill Lines	7/22/2017	15:10	8.33	2	2		Dropped bottom plug, pumped 2bbl of h2o in order to pressure test.
11	Pressure Test	7/22/2017	15:12				4000	Pressure tested all lines to 4000psi
12	Pump Spacer	7/22/2017	15:15	11	3	40	60	Mixed and pumped 40 bbl of Spacer at 3bpm for 40bbl. Full returns.
13	Shutdown	7/22/2017	15:30					Shutdown in order to load top plug
14	Pump Lead	7/22/2017	15:33	12.5	6	333	200	Mixed and pumped 333bbl of lead cement (902sks, 2.07yld, 11.81gl/sk) at 6bpm 200psi. Full returns
15	Pump Tail	7/22/2017	16:27	13.5	6	310	300	Mixed and pumped 310bbl of tail cement (1185sks, 1.47yld, 7.43gl/sk) at 6bpm 300psi. Full returns
16	Shutdown	7/22/2017	17:21					Shutdown in order to wash pumps and lines.
17	Wash Pumps and Lines	7/22/2017	17:22	8.33	3	10	60	Pumped 10bbl of h2o in order to wash pumps and lines.
18	Drop Top Plug	7/22/2017	17:27					Dropped top plug.
19	Pump Displacement	7/22/2017	17:28	8.33	10	30	750	Pumped 30bbl of h2o displacement at 10bpm in order to catch plug. 750psi, Full returns.



20	Slow Rate	7/22/2017	17:32	8.33	8	250	2500	Slowed rate to 8bpm after catching pressure, pumped 250bbls at 2500psi. Full returns.
21	Spacer to Surface	7/22/2017	17:56					Spacer to surface at 210 bbl of displacement pumped, received 40bbl to surface.
22	Cement to Surface	7/22/2017	18:01					Received 51bbl of cement to surface at 250bbl of displacement pumped.
23	Slow Rate	7/22/2017	18:05	8.33	3	21	2100	Slowed Rate to 3bpm in order to land plug.
24	Land Plug	7/22/2017	18:09				2750	Landed plug at calculated displacement of 301bbl. FCP 2150, landed at 2250, bumped to 2750psi held for 3 min.
25	Check Floats	7/22/2017	18:12					Floats held, 3bbl in return.
26	STEACS	7/22/2017	18:15					Crew conducted STEACS prior to rig down.
27	Rig Down	7/22/2017	18:30					Crew rigged down all iron and fittings.
28	Pre-Convoy Meeting	7/22/2017	19:15					Crew conducted STEACS Journey management.
29	Depart Location	7/22/2017	19:30					Crew heads to Camp.

3 Water Analysis

Metrics	Value	Recommended
Water Source	Upright Rig Tank	
Temperature	65 °F	50-80 °F
pH Level	7	5.5-8.5
Chlorides	0 mg/L	0-3000 mg/L
Total Alkalinity	250	0-1000
Total Hardness	250 mg/L	0-500 mg/L
Carbonates	0 mg/L	0-100 mg/L
Sulfates	<200 mg/L	0-1500 mg/L
Potassium	450 mg/L	0-3000 mg/L
Iron	0 mg/L	0-300 mg/L

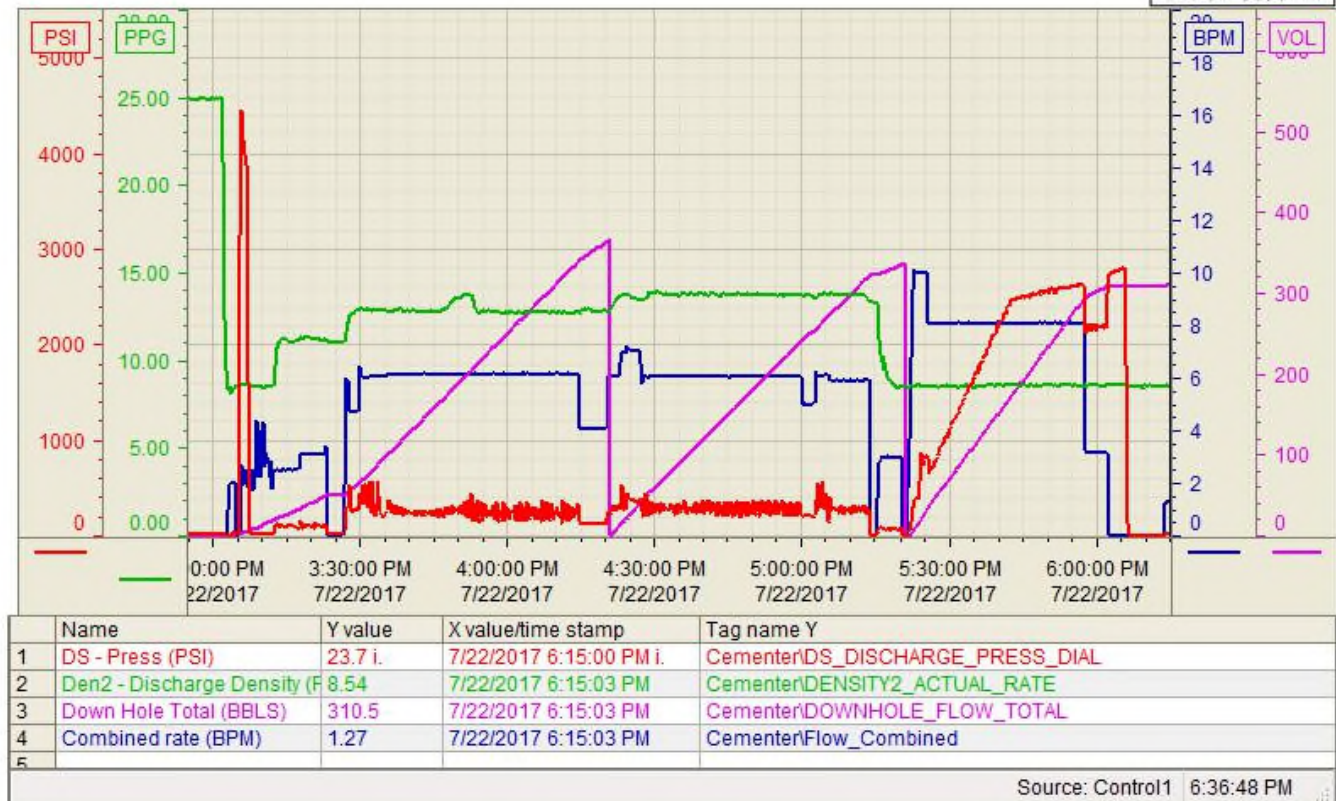
4 Pump Diagrams

Customer: Petroshare
Well Number: 3-10-2NHA
Lease Info: Shook



Print Date/Time

7/22/2017 6:36:54 PM





5 Field Ticket

5.1 Service Charges

Part #	Name	Unit Price	Unit	Quantity	Total
5	Additional Hours	\$1,500.00	hour	2	\$3,000.00
2	Depth Charge (based on MD)	\$0.50	foot	13646	\$6,823.00
6	Drayage Per Additional Unit Roundtrip	\$160.00	hour	18	\$2,880.00
14	Mobilization, Other	\$600.00	hour	3	\$1,800.00
1	Pumping Charge (includes 8 hours of location time)	\$12,000.00	job	1	\$12,000.00
Subtotal:					\$26,503.00
Discount (%):					% 65.00
Discount (\$):					\$17,226.95
Total:					\$9,276.05

5.2 Material Charges

Part #	Name	Unit Price	Unit	Quantity	Unit	Total
2605	ASR-20	\$0.55	lb	7188	lb	\$3,953.40
2213	AR-31	\$17.50	lb	32	lb	\$560.00
2402	ASF-20	\$70.70	gal	20	gal	\$1,414.00
2408	ASF-80	\$103.20	gal	20	gal	\$2,064.00
2901	AVS-10	\$52.05	lb	32	lb	\$1,665.60
2002	AC3-10	\$29.00	sack	902	sack	\$26,158.00
2703	ABX-30	\$22.50	lb	340	lb	\$7,650.00
2504	ADF-11	\$8.60	lb	255	lb	\$2,193.00
2301	AFL-10	\$32.50	lb	255	lb	\$8,287.50
2213	AR-31	\$17.50	lb	170	lb	\$2,975.00
2901	AVS-10	\$52.05	lb	85	lb	\$4,424.25
2001	ACG-10	\$28.00	sack	593	sack	\$16,604.00
2602	AFA-10	\$0.11	lb	44716	lb	\$4,918.76
2504	ADF-11	\$8.60	lb	302	lb	\$2,597.20
2308	AFL-50	\$33.50	lb	201	lb	\$6,733.50
2202	AR-20	\$25.40	lb	101	lb	\$2,565.40
2901	AVS-10	\$52.05	lb	101	lb	\$5,257.05
2905	AVS-50	\$0.40	lb	2009	lb	\$803.60
2502	ADF-20	\$107.00	gal	10	gal	\$1,070.00
Subtotal:						\$101,894.26
Discount (%):						% 65.00
Discount (\$):						\$66,231.27
Total:						\$35,662.99

5.3 Grand Total

Services	Materials	Grand Total
\$9,276.05	\$35,662.99	\$44,939.04